



STXR Series Surge Protective Devices

The most popular range in the STX series offering, the Surge-Trap[®] Type 1 STXR meets requirements for UL1449 Fourth Edition and is ideal for the replacement of obsolete surge arrestors. The STXR Series SPD feature TPMOV[®] technology inside making them some of the safest products available. With a small, compact design and line or load installation flexibility the STXR series is the perfect fit for branch panel and/or individual equipment protection. Protect your sensitive equipment from costly downtime or damage with these high performance surge protective devices.



Features

- Designed with the industry leading Mersen TPMOV[®] Technology
- LED status indicator (ON = Good, OFF = Replace)
- NEMA 4X enclosure for outdoor or indoor use
- Fits 3/4" knockouts with 3' leads for easy installation
- Optional mounting bracket for surface mount applications
- For use in ANSI/UL Type 1 or 2 SPD installations
- Up to 7 modes of Protection (L-N, L-L, L-G optional, N-G optional)
- 5-year warranty

Ratings

- Volts (U_n): 120-600VAC
- Nominal Discharge Current Rating (I_n): 10 - 20 kA
- Surge Capacity: 50kA
- Short-Circuit Current Rating (SCCR): 200kA

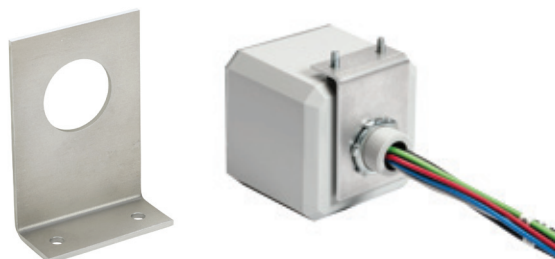
Applications

- AC Distribution
- Power supplies
- Drive protection
- Fire alarms
- Control panels
- Telecommunications
- Residential
- IT / Data centers

Approvals

- ANSI/UL 1449 4th Edition, Type 1 SPD, File E210793
- CSA C22.2, Type 1 SPD, File 162842
- ANSI/IEEE C62.41.1, C62.41.2, C62.45
- UL96A Lightning Protection

| Mersen STXR Series Type 1 Surge Protective Devices | | | | | | | | | | | | |
|--|----------|--|----------------|-------|---|-----|------|-----|---------------------------------|------|------|------|
| Part Number | Price | Description | Weight lb [oz] | I_n | Max Continuous Operating Voltage (MCOV) | | | | Voltage Protection Rating (VPR) | | | |
| | | | | | L-N | L-G | L-L | N-G | L-N | L-G | L-L | N-G |
| STXR120P05 | \$98.00 | 120V single phase | 1.45 [23.2] | 20kA | 150 | - | - | - | 700 | - | - | - |
| STXR240S05 | \$119.00 | 240/120V split phase | | | 150 | - | 300 | - | 700 | - | 1200 | - |
| STXR208Y05N | \$128.00 | 208/120V 3-Phase WYE | | | 150 | 300 | 300 | 150 | 700 | 1200 | 1200 | 600 |
| STXR480Y05N | \$144.00 | 480/277V 3-Phase WYE | | | 320 | 470 | 640 | 150 | 1200 | 1800 | 2000 | 700 |
| STXR600Y05N | \$176.00 | 600/347V 3-Phase WYE | | | 420 | 690 | 840 | 270 | 1500 | 2500 | 2500 | 1000 |
| STXR240D05 | \$132.00 | 240V 3-Phase DELTA | | | - | 320 | 640 | - | - | 1200 | 2000 | - |
| STXR480D05 | \$132.00 | 480V 3-Phase DELTA | | 10kA | - | 550 | 1100 | - | - | 1800 | 3000 | - |
| STXRMBK | \$14.00 | STXR Mounting bracket kit. Includes (1) 90 degree bracket and (2) 10-32 hex/slotted thread-forming mounting screws. Weight 0.05 lb [0.8 oz]. | | | | | | | | | | |



STXRMBK



STXR Series Surge Protective Devices

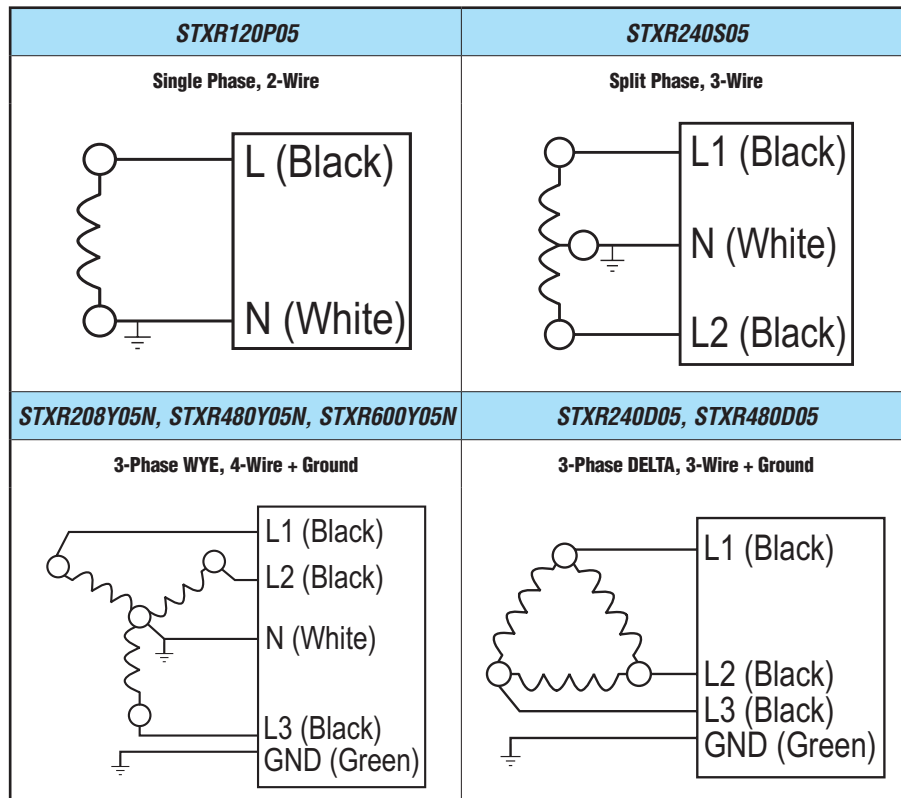
Technical Specifications

| Mersen STXR Series Type 1 Surge Protective Devices General Specifications | |
|---|---|
| Short circuit current rating (SCCR) | 200kA |
| Nominal discharge current rating (I_n) | 10 - 20 kA |
| Surge capacity per phase (I_{max}) | 50kA |
| Frequency | 50/60 Hz |
| Connection method | Parallel, 3' (1m) 10AWG stranded copper |
| Circuit placement | Lineside or loadside of service overcurrent protective device |
| Mounting | 3/4" - 14 threaded hub (includes locking washer) |
| Operating temperature | -40°C to +85°C [-40°F to +185°F] |
| Storage temperature | -40°C to +85°C [-40°F to +185°F] |
| Enclosure rating | NEMA 4X non-metallic* |
| Flammability rating | UL 94-5VA |
| Operating humidity | 0 to 95% non-condensing |
| Maximum operating altitude | 16,000 ft |
| Visual end-of-life indicator | GREEN = OK; OUT = replace |
| Enclosure material | Polycarbonate |
| Enclosure cover material | Lexan polycarbonate |
| Certification and SPD type | UL 1449 and CSA C22.2 Listed Type 1 |

*For NEMA 4x installation use appropriate customer supplied gasket, fittings and/or conduit to maintain rating.

To obtain the most current agency approval information, see the Agency Approval Checklist section on the specific part number's web page.

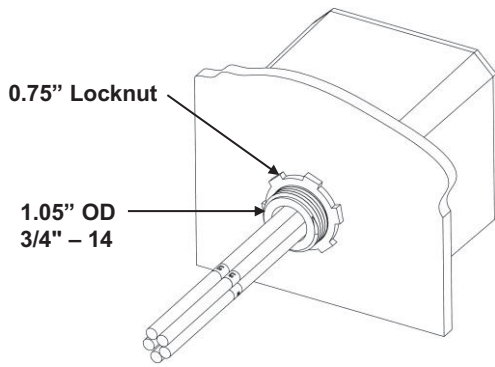
Wiring



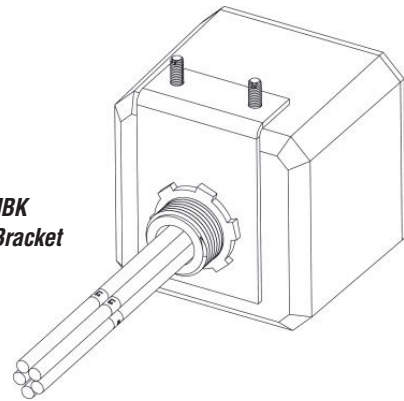


STXR Series Surge Protective Devices

Mounting

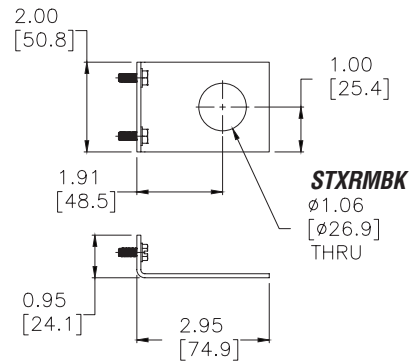
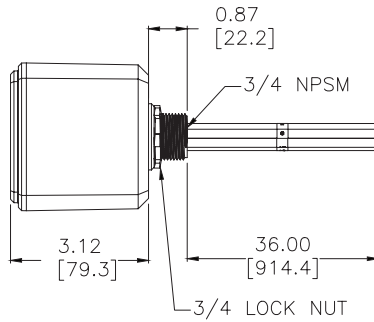
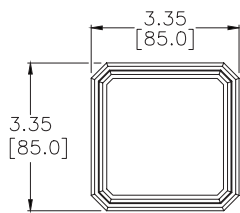


**STXRMBK
Mounting Bracket**



Dimensions

in [mm]



STXR Series Type 1 Surge Protective Devices

See our website: www.AutomationDirect.com for complete engineering drawings