

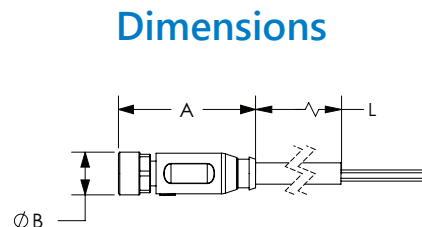
Connection Cables - Sensor and Signal

M12 A-coded Cable to Pigtail

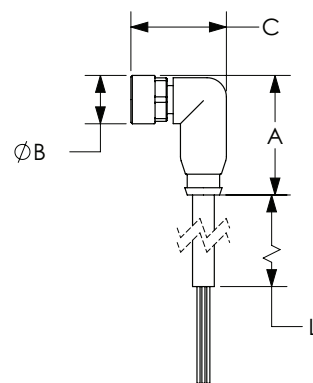
- Industry standard axial and right-angle M12 screw-lock connectors with open leads
- Cables listed can be used with patch cables
- 2m [6.5 ft], 3m [9.8 ft], 5m [16.4 ft], 7m [22.9ft], 10m [32.8 ft] and 15m [49.2 ft] cable lengths
- PVC (polyvinyl chloride) jacketed cable for general use and chemical washdown applications, ex. food & beverage industry
- PUR (polyurethane) jacketed cable for applications with exposure to oil and dynamic applications requiring more flexibility
- PP (polypropylene) wire insulation for low temperature applications
- TPE (thermoplastic elastomer) wire insulation for applications requiring high flexibility



M12 A-coded Cable to Pigtail										
Part Number	Price	Number of Wires	Connector	Cable Jacket/Wire Insulation Material	Jacket Color	Dimensions				
						A	B	C	L	
						mm			m [ft]	
CD12M-0B-050-A1*	\$14.00	3	Axial female	PVC/PVC	Black	38	15	-	5 [16.4]	
CD12M-0B-050-C1*	\$14.00		Right-angle female	PVC/PVC		39	15	28		
CD12M-0D-050-A1*	\$16.50		Axial female	PUR/PVC		38	15	-		
CD12M-0D-050-A1-A*	\$16.00		Axial female	PUR/PP		38	15	-		
CD12M-0D-050-C1*	\$16.50		Right-angle female	PUR/PVC		39	15	28		
CD12M-0D-050-C1-A*	\$16.00		Right-angle female	PUR/PP		39	15	28		
7000-12181-2130500*	\$8.75		Axial female	PVC/PVC	Gray	38	15	-		
7000-12321-2130500*	\$8.75		Right-angle female	PVC/PVC		39	15	28		
7000-12181-0330500*	\$13.00		Axial female	PUR/PP	Gray	38	15	-		
7000-12321-0230500*	\$11.50		Right-angle female	PUR-PVC/PVC		39	15	28		
7000-12321-0330500*	\$13.00		Right-angle female	PUR/PP		39	15	28		
CD12L-0B-020-A0	\$11.00		4	Axial female	PVC/PVC	Gray	38	15		-
CD12L-0B-020-C0	\$11.00	Right-angle female		PVC/PVC			39	15	28	7 [22.9]
CD12M-0B-070-A1	\$18.00	Axial female		PUR/PP			38	15	-	2 [6.5]
CD12M-0B-070-C1	\$18.00	Right-angle female		PUR/PP			39	15	28	7 [22.9]
7000-12221-0340200	\$10.00	Axial female		PUR-PVC/PVC	Gray	38	15	-	2 [6.5]	
7000-12341-0240200	\$9.00	Right-angle female		PUR-PVC/PVC		39	15	28	7 [22.9]	
7000-12341-0340200	\$10.00	Right-angle female		PUR/PP	Gray	38	15	-	2 [6.5]	
7000-12221-0340700	\$18.00	Axial female		PUR/PP		38	15	-	7 [22.9]	
7000-12341-0240700	\$18.00	Right-angle female		PUR-PVC/PVC	Gray	39	15	28	10 [32.8]	
7000-12341-0340700	\$18.00	Right-angle female		PUR/PP		39	15	28	10 [32.8]	
7000-12221-0241000	\$20.50	Axial female		PUR-PVC/PVC	Gray	38	15	-	15 [49.2]	
7000-12221-0341000	\$22.00	Axial female		PUR/PP		38	15	-	15 [49.2]	
7000-12341-0241000	\$20.50	Right-angle female	PUR-PVC/PVC	Gray	39	15	29	15 [49.2]		
7000-12341-0341000	\$22.00	Right-angle female	PUR/PP		39	15	29	15 [49.2]		
7000-12221-0241500	\$27.50	Axial female	PUR-PVC/PVC	Gray	38	15	-	10 [32.8]		
7000-12221-0341500	\$30.00	Axial female	PUR/PP		38	15	-	15 [49.2]		
7000-12341-0241500	\$27.50	Right-angle female	PUR-PVC/PVC	Gray	39	15	29	10 [32.8]		
7000-12341-0341500	\$30.00	Right-angle female	PUR/PP		39	15	29	15 [49.2]		
7000-12221-2141000	\$21.00	Axial female	PVC/PVC	Gray	38	15	-	10 [32.8]		
7000-12341-2141000	\$21.00	Right-angle female			PVC/PVC	39	15	29	15 [49.2]	
7000-12221-2141500	\$27.00	Axial female			PVC/PVC	38	15	-	15 [49.2]	
7000-12341-2141500	\$27.00	Right-angle female			PVC/PVC	39	15	29	15 [49.2]	



Axial female



Right-angle female

See our website: www.AutomationDirect.com for complete engineering drawings.

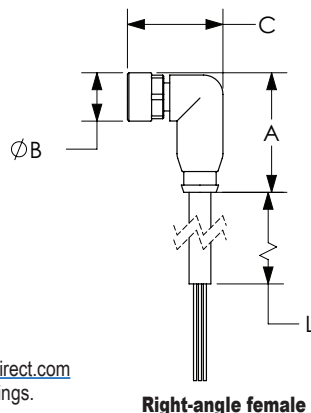
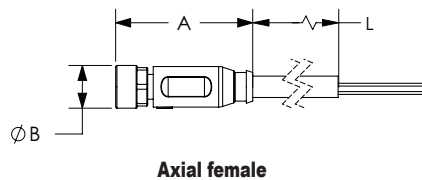
* Note: Do not use with sensors that require 4-wires cables. Continued on next page.

Connection Cables - Sensor and Signal

M12 A-coded Cable to Pigtail (continued)

M12 A-coded Cable to Pigtail												
Part Number	Price	Number of Wires	Connector	Cable Jacket/Wire Insulation Material	Jacket Color	Dimensions						
						A	B	C	L			
						mm			m [ft]			
7000-12241-0250300	\$14.00	5	Axial female	PUR-PVC/PVC	Yellow	38	15	-	3 [9.8]			
7000-12241-0350300	\$14.00		Axial female	PUR/PP		38	15	-				
7000-12361-0350300	\$14.00		Right-angle female	PUR/PP		39	15	28				
7000-12241-0250500	\$18.00		Axial female	PUR-PVC/PVC		Yellow	38	15	-	5 [16.4]		
7000-12241-0350500	\$18.00		Axial female	PUR/PP			38	15	-			
7000-12361-0250500	\$18.00		Right-angle female	PUR-PVC/PVC			39	15	28			
7000-12361-0350500	\$18.00		Right-angle female	PUR/PP			39	15	28			
7000-12241-0251000	\$26.50		Axial female	PUR-PVC/PVC			Yellow	38	15	-	10 [32.8]	
7000-12241-0351000	\$28.00		Axial female	PUR/PP				38	15	-		
7000-12361-0251000	\$26.50		Right-angle female	PUR-PVC/PVC		39		15	28			
7000-12361-0351000	\$28.00		Right-angle female	PUR/PP		39	15	28				
7000-12241-2150300	\$12.50		5	Axial female		PVC/PVC	Gray	38	15	-	3 [9.8]	
7000-12361-2150300	\$12.50	Right-angle female		39	15			28				
7000-12241-2150500	\$17.50	Axial female		PVC/PVC	Gray			38	15	-	5 [16.4]	
7000-12361-2150500	\$17.50	Right-angle female						39	15	28		
7000-12241-2151000	\$25.00	Axial female		PVC/PVC	Gray			38	15	-	10 [32.8]	
7000-12361-2151000	\$25.00	Right-angle female						39	15	28		
7000-17041-2920300	\$28.00	8		Axial female	PUR/PP			Gray	44.5	15	-	3 [9.8]
7000-17061-2920300	\$28.00			Right-angle female					39	15	32	
7000-17041-2920500	\$36.50		Axial female	PUR/PP		Gray	44.5		15	-	5 [16.4]	
7000-17061-2920500	\$36.50		Right-angle female				39		15	32		
7000-17041-2921000	\$55.00		Axial female	PUR/PP		Gray	44.5		15	-	10 [32.8]	
7000-17061-2921000	\$55.00		Right-angle female				39		15	32		
7000-17041-2950300	\$29.50		Axial female	PUR/PP		Gray	44.5		15	-	3 [9.8]	
7000-17061-2950300	\$29.50		Right-angle female				39		15	32		
7000-17041-2950500	\$37.00		Axial female	PUR/PP		Gray	44.5		15	-	5 [16.4]	
7000-17061-2950500	\$37.00		Right-angle female				39		15	32		
7000-17041-2951000	\$58.00		Axial female	PUR/PP		Gray	44.5		15	-	10 [32.8]	
7000-17061-2951000	\$58.00		Right-angle female				39		15	32		
7000-19041-7050300	\$47.00	12	Axial female	PUR/PP	Black	43.5	15	-	3 [9.8]			
7000-19061-7050300	\$47.00		Right-angle female	PUR/TPE		39	15	32				
7000-19041-7050500	\$56.00		Axial female	PUR/PP		Black	43.5	15	-	5 [16.4]		
7000-19061-7050500	\$56.00		Right-angle female	PUR/TPE			39	15	32			
7000-19041-7051000	\$83.00		Axial female	PUR/PP		Black	43.5	15	-	10 [32.8]		
7000-19061-7051000	\$83.00		Right-angle female	PUR/TPE			39	15	32			

Dimensions



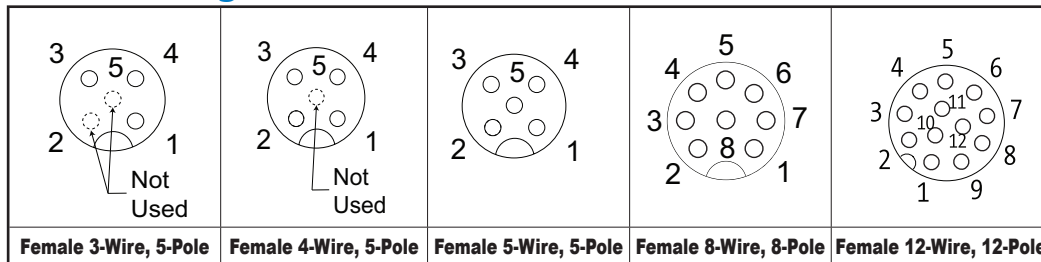
See our website: www.AutomationDirect.com
for complete engineering drawings.

Connection Cables - Sensor and Signal

M12 A-coded Cable to Pigtail Specifications							
Model	CD12 Series			7000 Series			
Type	3-Wire, 5-Pole	4-Wire, 5-Pole	3-Wire, 5-Pole	4-Wire, 5-Pole	5-Wire, 5-Pole	8-Wire, 8-Pole	12-Wire, 12-Pole
Max Voltage	250 VAC/VDC				125 VAC/VDC	30 VAC/VDC	
Max Voltage - UL Rating	N/A - not UL recognized			30 VAC/VDC			
Max Current Per Contact	4A				2A	1.5 A	
Protection Degree	IP65 / IP66K / IP67						
Nut Material	Female threads are nickel plated die cast zinc						
Cable Jacket/Wire Insulation Material	PUR/PP or PVC/PVC		PVC/PVC or PUR/PP or PUR/PVC			PUR/PP	PUR/PP or PUR/TPE
Contacts Material	Copper Alloy						
Tightening Torque	≤ 0.6 N·m [≤ 0.44 ft·lb]						
Conductors Cross Section	0.34 mm ² [22AWG]					0.25 mm ² [24AWG]	0.14 mm ² [26AWG]
Ø Outer Cable For PUR/PVC or PVC/PVC or PUR-PVC/PVC	4.6 mm [0.18 in]	5.0 mm [0.20 in]	PVC/PVC 4.6 mm [0.18 in] PUR/PVC 4.9 mm [0.19 in]	PVC/PVC 5.0 mm [0.20 in] PUR/PVC/PVC 5.2 mm [0.20 in]	PVC/PVC 5.2 mm [0.20 in] PUR-PVC/PVC 5.9 mm [0.23 in]	N/A	
Ø Outer Cable For PUR/PP or PUR/TPE	4.1 mm [0.16 in]	N/A	4.1 mm [0.16 in]	4.5mm [0.18 in]	4.8 mm [0.19 in]	5.8 mm [0.23 in]	6.0 mm [0.24 in]
Temperature Range - Stationary Use	PUR/PP -40 to 80°C [-40 to 176°F], PUR/PVC or PVC/PVC -30 to 80°C [-22 to 176°F]					PUR/PP -40 to 80C [-40 to 176F] PUR/TPE -25 to 80C [-13 to 176F]	
Temperature Range - Flexible Use	PUR/PP -25 to 80°C [-13 to 176°F]; PVC/PVC or PUR/PVC -5 to 80°C [23 to 176°F]					PUR/PP and PUR/TPE -25 to 80°C [-13 to 176°F]	
Min Bend Radius	Stationary use: 5 x cable diameter; Flexible use: 10 x cable diameter						
Approvals*	CE, cCSAus			cULus, UKCA, cCSAus			

*To obtain the most current agency approval information, see the Agency Compliance & Certifications Checklist section on the specific part number's web page.

Contact Diagrams



Wiring Diagrams

