

IEC Limit Switches Accessories

Replacement contact blocks

Easily-installed replacement contact blocks fit both heavy-duty IEC and double-insulated limit switches, including mini-DIN models.



Note: Limit switches come standard with snap-action contacts (AGZ11-SWITCH.) To replace contact block, remove limit switch cover. Carefully remove old contact block and install replacement. Contact blocks are supplied with an adapter to fit into larger ABM and ABP switches. Remove this adapter when installing contacts in mini-DIN AAP models.

Replacement Contact Blocks			
Part Number	Price	Contact Type	Action
AGZ11-SWITCH	\$5.25	Snap-action 1 N.C. and N.O.	3ms change-over time
AGZ02-SWITCH	\$5.00	Snap-action 2 N.C.	3ms change-over time
AGX11-SWITCH	\$5.00	Slow-action 1 N.C. and 1 N.O.	Break before make
AGY11-SWITCH	\$5.00	Slow-action overlay 1 N.C. and 1 N.O.	Make before break
AGW02-SWITCH	\$5.50	Slow-action delay 2 N.C.	Simultaneous
AGW20-SWITCH	\$4.00	Slow-action overlay 2 N.O.	Simultaneous

Additional lever arms, spare parts and accessories for ABM series

Additional Lever Arms/Spare Parts and Accessories			
Part Number	Price	Dimensions	Actuator Type
AGE42-LEVER	\$5.00	Figure 8	Lever with stainless steel roller for E42 models (replacement lever)
AGE44-LEVER	\$5.00	Figure 13	Lever with 50mm diameter rubber roller (fits E42 models)
AGE52-LEVER	\$6.00	Figure 9	Lever with stainless steel roller for E52 models (replacement lever)
AGE54-LEVER	\$6.00	Figure 14	Lever with 50mm diameter rubber roller (fits E52 models)

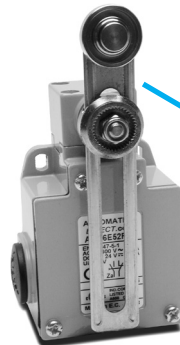
Note: See the Bar Charts page of this section for more information.



Replacement actuator levers for heavy-duty IEC models

Easily-replaceable actuators for E42 and E52 model limit switches.

Note: These models have an E42 or E52 in the part number, for example, ABM1E42Z11.



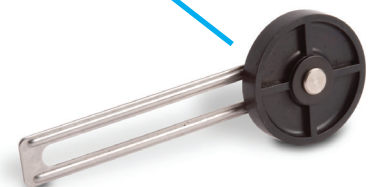
AGE52-LEVER

(Replacement lever shown installed on ABM5E52Z11 limit switch)

AGE44-LEVER



AGE54-LEVER



IEC Limit Switches Dimensions

Switch body dimensions

Dimensions are in millimeters. 25.4 mm = 1 inch
 For example, 30 mm to inches = 30/25.4 = 1.181 inches.

Figure 1: ABM models — single-cable entry style

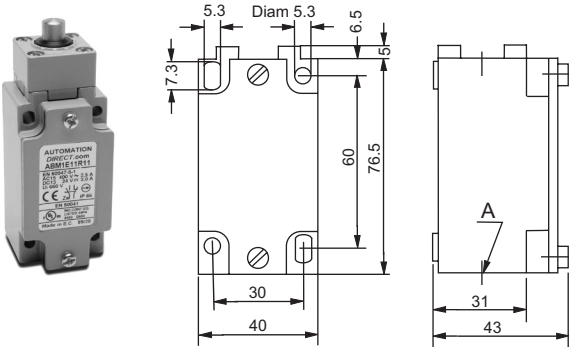


Figure 2: ABM models — 3-cable entry style

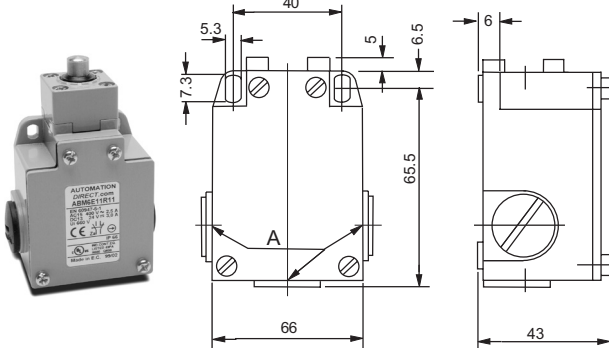


Figure 3: ABP models

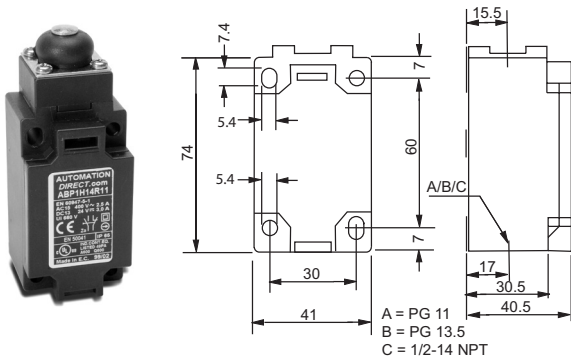
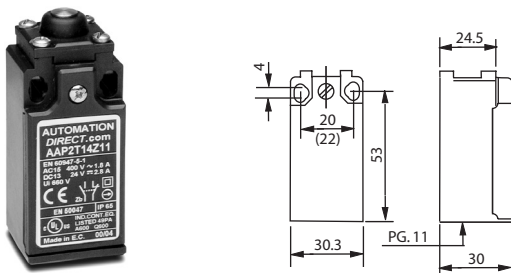


Figure 4: AAP (Mini DIN) models



Actuators - ABM, ABP models

Figure 5: Steel plunger (ABM, ABP models)

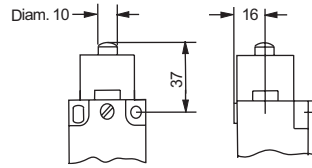


Figure 6: Plunger with roller (ABM, ABP models)

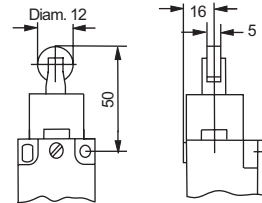


Figure 7: 1-way lever with roller (ABM, ABP models)

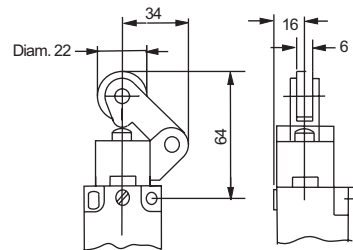


Figure 8: Side rotary with roller (ABM, ABP models)

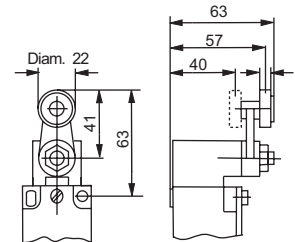
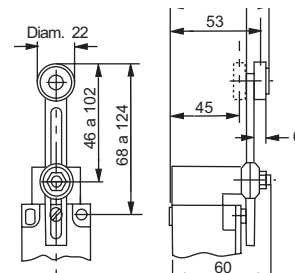


Figure 9: Side rotary with adjustable lever roller (ABM, ABP models)



IEC Limit Switches Dimensions

Figure 10: Side rotary with rod (ABM, ABP models)

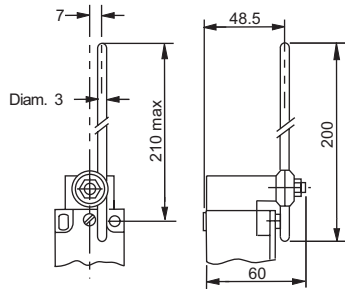


Figure 11: Wobble-type with spring with tip (ABM, ABP models)

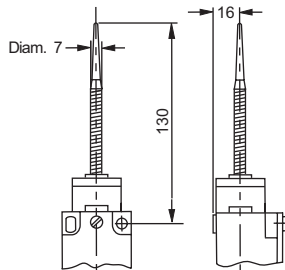


Figure 12: Wobble-type steel spring (ABM, ABP models)

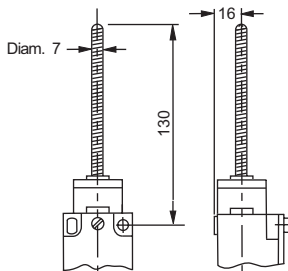


Figure 13: Optional lever arm (ABM models) AGE44-LEVER

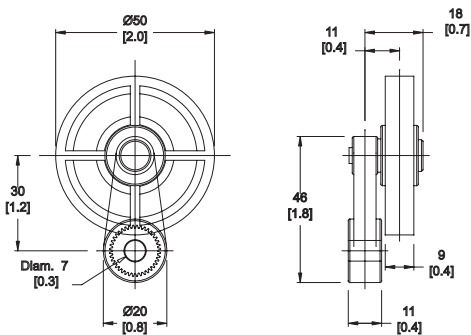
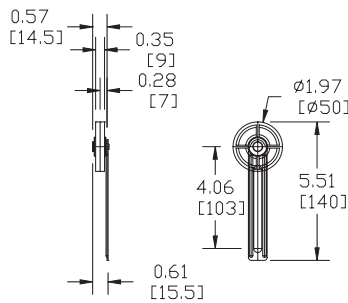


Figure 14: Optional lever arm (ABM models) AGE54-LEVER



Actuators — mini-DIN (AAP) models

Figure 15: Steel plunger (AAP models)

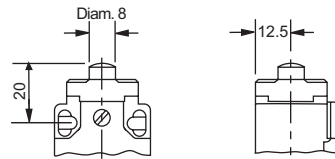


Figure 16: Steel plunger with roller (AAP models)

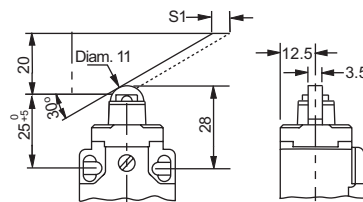


Figure 17: One-way lever with roller (AAP models)

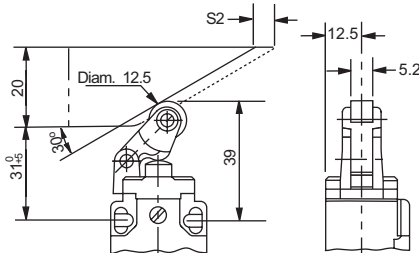


Figure 18: Side rotary lever with roller (AAP models)

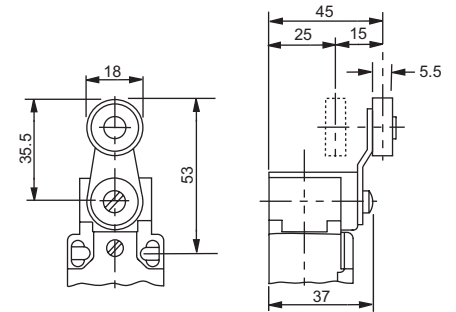


Figure 19: Side rotary lever with adj. lever roller (AAP models)

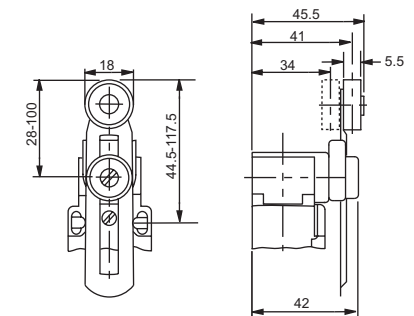
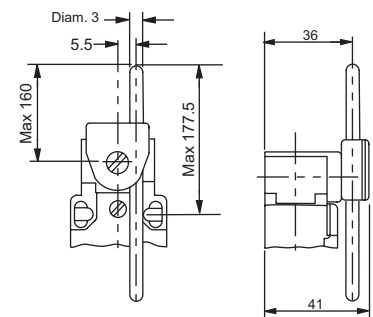


Figure 20: Side rotary lever with rod actuator (AAP models)



Dimensions are in millimeters (25.4 mm = 1 inch). For example, 30 mm to inches = 30/25.4 = 1.181 inches.