

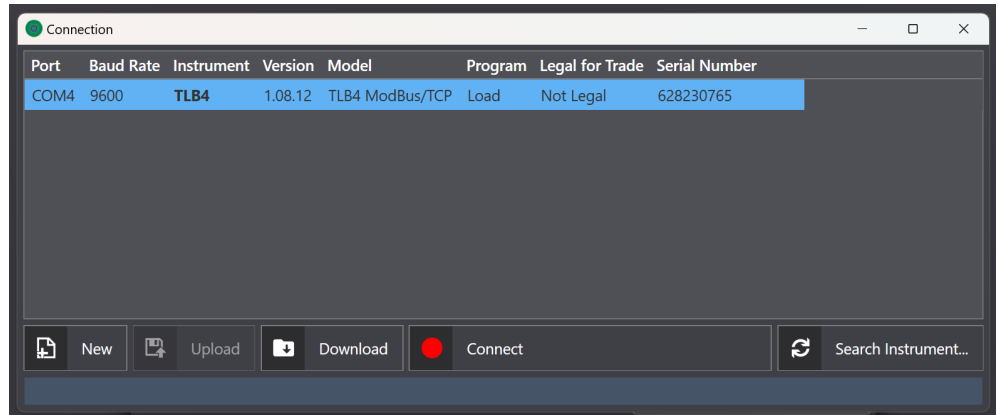
# LAUMAS® Instrument Manager Software

## LAUMAS-MANAGER-SW FREE Download

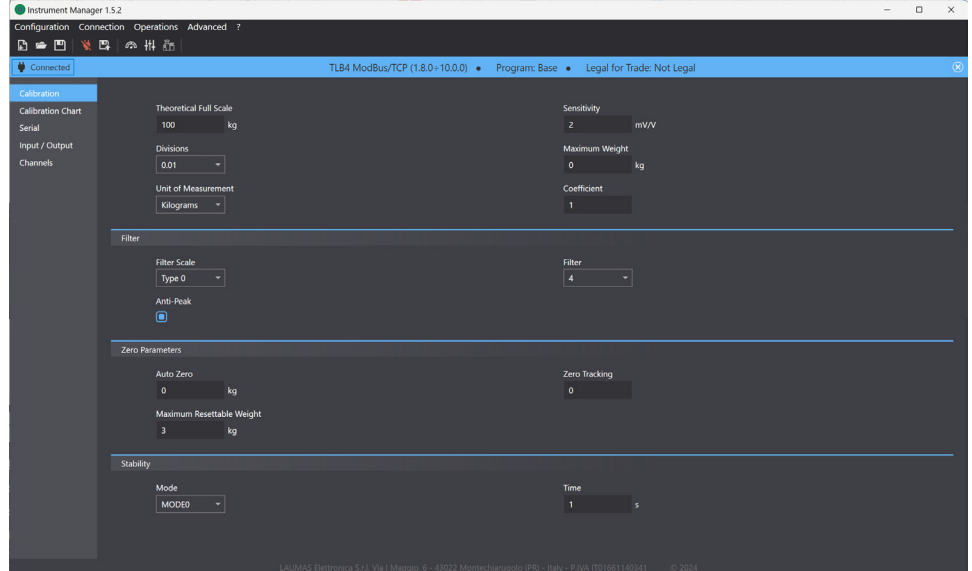
Unlock the full potential of your LAUMAS TLB4 series load cell transmitters with Instrument Manager - the free, powerful software designed for seamless PC management. Compatible with the TLB4 series, this intuitive tool empowers you to configure parameters, monitor performance, perform real calibrations, and update firmware effortlessly. It allows you to create and compare configurations, track real-time weight data, and streamline diagnostics with multichannel insights - all from your desktop. Simplify your setup, boost precision, and keep up-to-date with automatic firmware updates straight from LAUMAS. Download Instrument Manager at [AutomationDirect.com](http://AutomationDirect.com) and get started!

Use the USB-485M AutomationDirect PC adapter to connect to the RS-485 communications ports on the [TLB4](#).

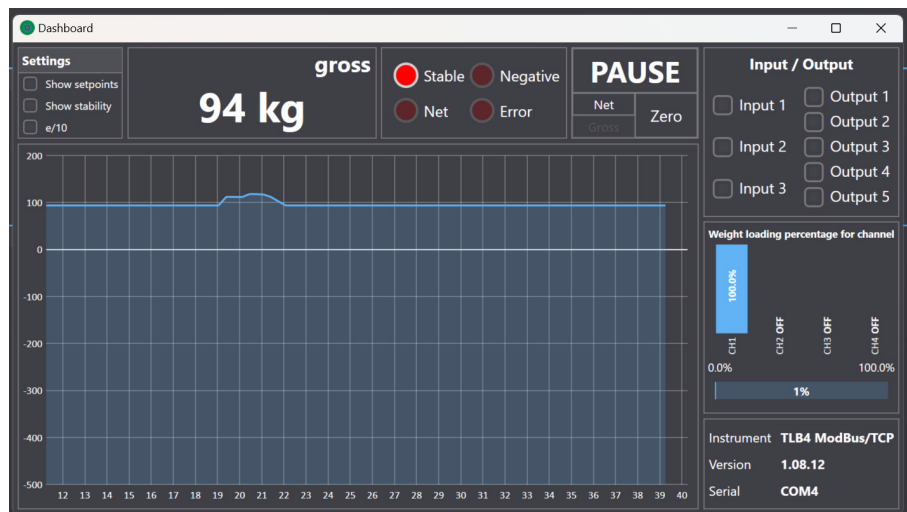
## Easily Connect...



## ...configure...



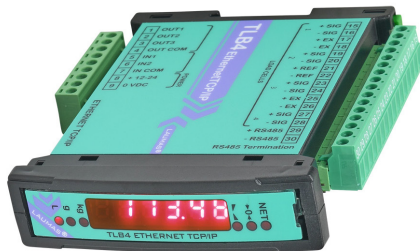
## ...monitor



**LAUMAS®**

# TLB4 Series - Analog Load Cell Transmitters

## Overview

Part No. **TLB4ETHETCP**

The Laumas TLB4 series load cell transmitter easily converts four individual load cell mV/V inputs into an analog (V or mA) signal or into values which be read by a PLC or computer via RS-485 Modbus RTU or, depending on the model, via EtherNet/IP or Modbus/TCP. The **TLB4ETHETCP** model provides a TCP/IP Webserver for remote monitoring and control. Easily perform either a theoretical calibration based on the load cell values or a real calibration with sample weights. The TLB4 can be mounted on DIN rail or enclosure mounted. Display and LEDs allow for quick reference. The TLB4 also provides inputs and outputs for control of batching, alarming, taring, and other input and output actions.

## Features

- 4 channel 24-bit input
- 16-bit analog output (TLB4), EtherNet/IP (TLB4ETHEIP), or Modbus/TCP (TLB4MODBUSTCP)
- RS-485 Modbus RTU communication on all models
- 2 logic inputs, 3 relay outputs
- Six-digit LED display
- Simple setting via four front panel buttons
- Power up to 16 parallel load cells (at 350 ohms)
- Easy configuration and monitoring via RS-485 using Instrument Manager software
- DIN rail or panel mounted
- IP30 front panel protection rating
- Made in Italy



## TLB4 Series Analog Load Cell Transmitter Selection

Part Number	Load Cell Inputs	Load Cell Signal Range	Port Protocol(s)	Operating Voltage	Use With	Price	Weight (lbs)	Drawing Link	Manufacturer Technical Specifications	Manufacturer Manual	Manufacturer Protocols Manual
<b>TLB4</b>	4	+/- 39 mV	Modbus RTU Slave	12-24 VDC	4- or 6-wire load cells (up to 16 can be connected)	\$289.00	0.534	<a href="#">PDF</a>	<a href="#">PDF</a>	<a href="#">PDF</a>	<a href="#">PDF</a>
<b>TLB4ETHETCP</b>			Modbus RTU Slave webserver (non-secure HTTP)			\$425.00	0.528	<a href="#">PDF</a>			
<b>TLB4MODBUSTCP</b>			Modbus RTU Slave Modbus TCP Server			\$485.00	0.534	<a href="#">PDF</a>			
<b>TLB4ETHEIP</b>			EtherNet/IP Server Modbus RTU Slave			\$550.00	0.57	<a href="#">PDF</a>			

Note: For additional wiring, specifications and installation information, refer to the Manufacturer Specs and Manual PDFs.

## Wiring

