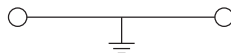


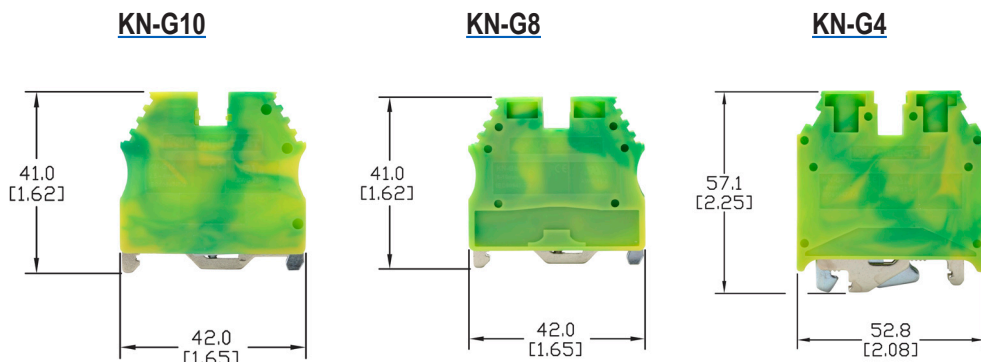


# Ground Terminal Blocks



Dimensions: mm [in]

- Screw connection terminal
- PE screw connection DIN Rail
- UL E179129 (For copper wire only. One conductor in terminal only.)
- CE (EN 60947-7-1/ EN 60947-7-2)
- VDE (IEC 60947-7-1)



See our website: [www.AutomationDirect.com](http://www.AutomationDirect.com) for complete engineering drawings

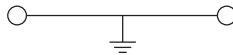
Ordering Information									
Color	Part Number	Qty	Price	Part Number	Qty	Price	Part Number	Qty	Price
Yellow/ Green	<b>KN-G10</b>	50	\$140.00	<b>KN-G8</b>	25	\$88.00	<b>KN-G4</b>	50	\$344.00
	<b>KN-G10-10</b>	10	\$30.00	<b>KN-G8-10</b>	10	\$36.50	<b>KN-G4-10</b>	10	\$67.00

Technical Specifications									
Model	KN-G10			KN-G8			KN-G4		
<b>Width</b>	6mm [0.24 in]			10mm [0.39 in]			12mm [0.47 in]		
<b>Stripping Length</b>	10mm [0.39 in]			12mm [0.47 in]			12mm [0.47 in]		
<b>Tightening Torque</b>	0.5 N·m [4.4 lb·in]			1.2 N·m [10.6 lb·in]			1.2 N·m [10.6 lb·in]		
<b>Density</b>	166/m [50 pcs/ft]			100/m [30 pcs/ft]			83/m [25 pcs/ft]		
<b>UL/CSA Approval</b>	—	—	26-10 AWG	—	—	16-8 AWG	—	—	12-4 AWG
<b>VDE Approval</b>	—	—	4mm <sup>2</sup>	—	—	10mm <sup>2</sup>	—	—	16mm <sup>2</sup>
<b>CE Conformity</b>	—	—	4mm <sup>2</sup>	—	—	10mm <sup>2</sup>	—	—	16mm <sup>2</sup>
<b>Operating Temperature</b>	Ambient air temperature: -67 to 185°F [-55 to 85°C], Relative humidity: 50% max at 104°F [40°C] and 90% max at 68°F [20°C]								
<b>SCCR Rating</b>	100kA per Table SB4.1, 2009, UL 508A. Maximum short circuit current rating for unmarked components.								
<b>Material</b>	Current Bar: Copper Alloy / Housing: Polyamide 66 / Screws: Zinc Plated Steel								
<b>DIN Rail Width</b>	35mm								

Accessories			
<b>Marking Tags</b>	KN-L5 Series	KN-L5 Series KN-L6 Series	KN-L5 Series KN-L6 Series

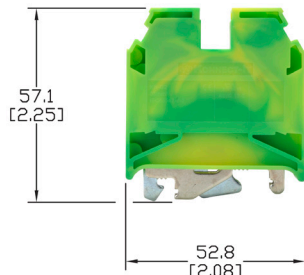


# Ground Terminal Blocks

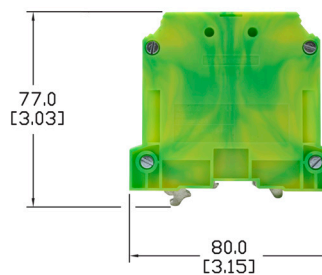


Dimensions: mm [in]

### KN-G2



### KN-G1/0



- Spring clamp terminal
- UL E179129  
(For copper wire only. One conductor in terminal only.)
- CE (EN 60947-7-1/  
EN 60947-7-2)
- VDE (IEC 60947-7-1)

See our website: [www.AutomationDirect.com](http://www.AutomationDirect.com) for complete engineering drawings

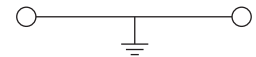
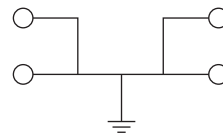
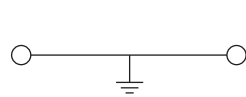
Ordering Information						
Color	Part Number	Qty	Price	Part Number	Qty	Price
Yellow/Green	<b>KN-G2</b>	40	\$302.00	<b>KN-G1/0</b>	10	\$87.00
	<b>KN-G2-10</b>	10	\$73.00	<b>KN-G1/0-5</b>	5	\$46.50

Technical Specifications						
Model	KN-G2			KN-G1/0		
Width	16mm [0.63 in]			20mm [0.79 in]		
Stripping Length	18mm [0.71 in]			20mm [0.79 in]		
Tightening Torque	2.5 N·m [22.1 lb-in]			6 N·m [22.1 lb-in]		
Density	62/m [19 pcs/ft]			50/m [15 pcs/ft]		
UL/CSA Approval	—	—	12-2 AWG	—	—	6-1/0 AWG
VDE Approval	—	—	35mm <sup>2</sup>	—	—	50mm <sup>2</sup>
CE Conformity	—	—	35mm <sup>2</sup>	—	—	50mm <sup>2</sup>
Operating Temperature	Ambient air temperature: -67 to 185°F [-55 to 85°C] Relative humidity: 50% max at 104°F [40°C] and 90% max at 68°F [20°C]					
SCCR Rating	100kA per Table SB4.1, 2009, UL 508A. Maximum short circuit current rating for unmarked components.					
Material	Current Bar: Copper Alloy / Housing: Polyamide 66 / Screws: Zinc Plated Steel					
DIN Rail Width	35mm			35mm		

Accessories		
Marking Tags	KN-L5 Series KN-L6P5 Series	No tags available



# Ground Terminal Blocks



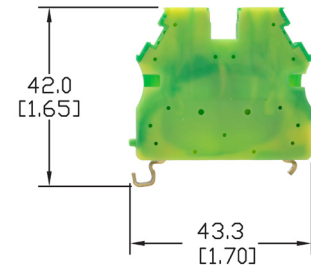
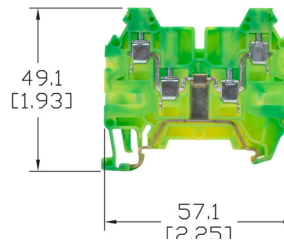
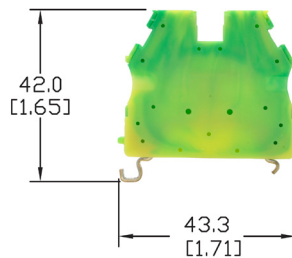
- Screw connection terminal
- PE snap-on connection
- UL E179129  
(For copper wire only. One conductor in terminal only.)
- CE (EN 60947-7-1/  
EN 60947-7-2)
- VDE (IEC 60947-7-2)

Dimensions: mm [in]

**KN-G12SP**

**KN-G12SP4**

**KN-G10SP**



See our website: [www.AutomationDirect.com](http://www.AutomationDirect.com) for complete engineering drawings

## Ordering Information

Color	Part Number	Qty	Price	Part Number	Qty	Price	Part Number	Qty	Price
Yellow/Green	<b>KN-G12SP</b>	50	\$112.00	<b>KN-G12SP4</b>	25	\$88.00	<b>KN-G10SP</b>	50	\$125.00
	<b>KN-G12SP-10</b>	10	\$24.50	<b>KN-G12SP4-10</b>	10	\$37.50	<b>KN-G10SP-10</b>	10	\$28.00

## Technical Specifications

Model	KN-G12SP	KN-G12SP4	KN-G10SP
Width	5.75 mm [0.23 in]	5mm [0.20 in]	6mm [0.24 in]
Stripping Length	10mm [0.39 in]	10mm [0.39 in]	10mm [0.39 in]
Tightening Torque	0.4 N·m [3.5 lb·in]	0.5 N·m [4.4 lb·in]	0.5 N·m [4.4 lb·in]
Density	53 pcs/ft [173/m]	200/m [60 pcs/ft]	161/m [49 pcs/ft]
UL/CSA Approval	— — 26-12 AWG	— — 26-12 AWG	— — 26-10 AWG
VDE Approval	— — 2.5 mm <sup>2</sup>	— — 2.5 mm <sup>2</sup>	— — 4mm <sup>2</sup>
CE Conformity	— — 2.5 mm <sup>2</sup>	— — 2.5 mm <sup>2</sup>	— — 4mm <sup>2</sup>
Operating Temperature	Ambient air temperature: -67 to 185°F [-55 to 85°C], Relative humidity: 50% max at 104°F [40°C] and 90% max at 68°F [20°C]		
SCCR Rating	100kA per Table SB4.1, 2009, UL 508A. Maximum short circuit current rating for unmarked components.		
Material	Current Bar: Copper Alloy / Housing: Polyamide 66 / Screws: Zinc Plated Steel		
DIN Rail Width	35mm		

## Accessories

End Covers	Yellow/Green	—	—	—	<b>KN-ECG12SP4</b>	10/pkg	\$4.75	—	—	—
Marking Tags	KN-L5 Series			KN-L5 Series			KN-L5 Series			



# KONNECT-IT® Accessories

## Multi-Pole Jumper Bars

Multi-pole jumper bars provide terminal block connection flexibility. Screw-down connection jumpers feature all-metal construction and can be installed quickly just by tightening the screws. Screwless comb-style jumpers are also available. See next page for the larger J1/0 jumper installation instructions.

**KN-10J12**



**KN-2JM12**

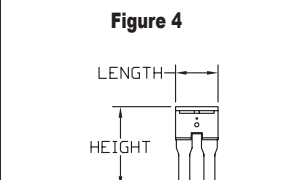
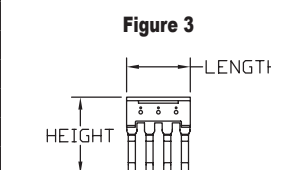
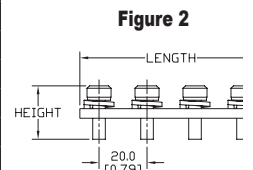
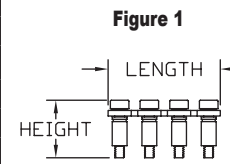


**KN-2JCC8**



### Multi-Pole Jumper Bars Ordering Information

Type	Part Number	Price	Qty	Number of Poles	Ratings	Dimensions - mm [in]			Fig.	Works With
						Height	Length	Width		
Screw-down connection	<a href="#">KN-2J12</a>	\$12.00	25	2	750V 24A	15.8 [0.62]	10.1 [0.40]	4.4 [0.17]	1	KN-T12xx KN-D12xx KN-D12X KN-D12DR1 KN-D12LEDxx
	<a href="#">KN-3J12</a>	\$14.50	20	3	750V 24A		15.3 [0.60]			
	<a href="#">KN-4J12</a>	\$18.00	15	4	750V 24A		20.4 [0.80]			
	<a href="#">KN-10J12</a>	\$12.00	5	10	750V 24A		51.1 [2.01]			
	<a href="#">KN-2J10</a>	\$17.00	25	2	750V 32A	15.5 [0.61]	10.8 [0.43]	6.0 [0.24]	1	KN-T10xx KN-D10xx KN-D10X KN-D10DR1 KN-D10LEDxx
	<a href="#">KN-3J10</a>	\$20.50	20	3	750V 32A		17.0 [0.67]			
	<a href="#">KN-4J10</a>	\$20.50	15	4	750V 32A		23.0 [0.91]			
	<a href="#">KN-10J10</a>	\$14.50	5	10	750V 32A		59.0 [2.32]			
	<a href="#">KN-2J8</a>	\$18.00	25	2	630V 41A	15.5 [0.61]	14.3 [0.56]	6.0 [0.24]	1	KN-T8xx
	<a href="#">KN-3J8</a>	\$22.00	20	3	630V 41A		22.3 [0.88]			
	<a href="#">KN-4J8</a>	\$21.50	15	4	630V 41A		30.3 [1.19]			
	<a href="#">KN-10J8</a>	\$17.00	5	10	630V 41A		78.3 [3.08]			
	<a href="#">KN-2J6</a>	\$22.50	25	2	630V 57A	15.5 [0.61]	18.0 [0.71]	6.0 [0.24]	1	KN-T6xx
	<a href="#">KN-3J6</a>	\$23.50	20	3	630V 57A		28.0 [1.10]			
	<a href="#">KN-4J6</a>	\$23.50	15	4	630V 57A		38.0 [1.50]			
	<a href="#">KN-10J6</a>	\$18.50	5	10	630V 57A		98.0 [3.86]			
	<a href="#">KN-2J4</a>	\$35.50	25	2	750V 76A	23.0 [0.91]	21.0 [0.83]	6.0 [0.24]	1	KN-T4xx
	<a href="#">KN-3J4</a>	\$37.00	20	3	750V 76A		33.0 [1.30]			
	<a href="#">KN-4J4</a>	\$37.00	15	4	750V 76A		45.0 [1.77]			
	<a href="#">KN-10J4</a>	\$29.50	5	10	750V 76A		117.0 [4.61]			
<a href="#">KN-2J2</a>	\$36.00	25	2	750V 125A	21.0 [0.83]	29.0 [1.14]	8.0 [0.31]	1	KN-T2xx	
<a href="#">KN-3J2</a>	\$39.00	20	3	750V 125A		45.0 [1.77]				
<a href="#">KN-4J2</a>	\$39.00	15	4	750V 125A		61.0 [2.40]				
<a href="#">KN-10J2</a>	\$29.50	5	10	750V 125A		157.0 [6.18]				
<a href="#">KN-2J1/0</a>	\$11.00	5	2	1000V 150A	22.3 [0.88]	36.0 [1.42]	12.0 [0.47]	2	KN-T1/0xx	
<a href="#">KN-3J1/0</a>	\$18.50	5	3	1000V 150A		56.0 [2.20]				
<a href="#">KN-4J1/0</a>	\$23.50	5	4	1000V 150A		76.0 [2.99]				
<a href="#">KN-2JTL12</a>	\$18.50	25	2	440V 24A	15.5 [0.61]	11.0 [0.43]	4.4 [0.17]	1	KN-DG12 KN-TG12 KN-TL14 KN-TL14S KN-TL14SLN KN-TL14SLP	
<a href="#">KN-3JTL12</a>	\$23.00	20	3	440V 24A		17.0 [0.67]				
<a href="#">KN-4JTL12</a>	\$21.50	15	4	440V 24A		23.0 [0.91]				
<a href="#">KN-10JTL12</a>	\$18.50	5	10	440V 24A		59.0 [2.32]				
Push-in Connection	<a href="#">KN-2JM10</a>	\$11.00	25	2	750V 32A	23.2 [0.91]	9.5 [0.37]	2.7 [0.11]	3	KN-M10xx KN-KBD10
	<a href="#">KN-3JM10</a>	\$13.50	20	3	750V 32A		15.5 [0.61]			
	<a href="#">KN-4JM10</a>	\$15.50	15	4	750V 32A		21.5 [0.85]			
	<a href="#">KN-10JM10</a>	\$14.50	5	10	750V 32A		57.5 [2.26]			
	<a href="#">KN-2JM12</a>	\$10.50	25	2	750V 24A	21.7 [0.85]	8.0 [0.31]	2.3 [0.09]	3	KN-M12xx KN-T12SP4
	<a href="#">KN-3JM12</a>	\$12.00	20	3	750V 24A		13.0 [0.51]			
	<a href="#">KN-4JM12</a>	\$12.00	15	4	750V 24A		18.0 [0.71]			
<a href="#">KN-10JM12</a>	\$13.50	5	10	750V 24A	48.0 [1.89]					
Screwless Comb-style	<a href="#">KN-2JCC12</a>	\$15.50	25	2	750V 24A	23.7 [0.93]	8.0 [0.31]	2.8 [0.11]	4	KN-T12xx KN-T10xx KN-T8xx KN-T6xx
	<a href="#">KN-2JCC10</a>	\$31.00	25		750V 32A	24.7 [0.97]	9.5 [0.37]			
	<a href="#">KN-2JCC8</a>	\$32.50	25		630V 41A	25.6 [1.01]	13.5 [0.53]			
	<a href="#">KN-2JCC6</a>	\$36.00	25		630V 57A	26.7 [1.05]	16.0 [0.63]			



Please visit our website [www.AutomationDirect.com](http://www.AutomationDirect.com) for complete engineering drawings.

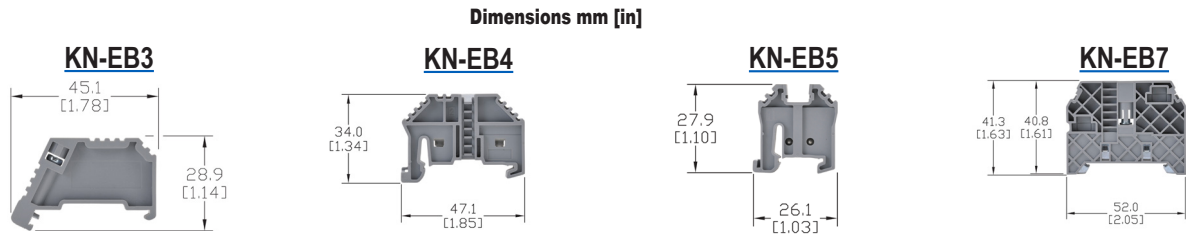
Screwless Comb-Style jumpers are designed to be connected under the conductor clamp.



# KONNECT-IT® Accessories

## End Brackets

End brackets prevent terminal blocks and other DIN rail mount components and devices from moving laterally on the rail. They are constructed from polyamide 66 and available in configurations for 35mm and 15mm DIN rails.

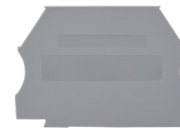


End Brackets Ordering Information												
Gray End Brackets	<b>KN-EB3</b>	100/pkg	\$48.00	<b>KN-EB4</b>	100/pkg	\$50.00	<b>KN-EB5</b>	100/pkg	\$73.00	<b>KN-EB7</b>	50/pkg	\$50.00
	<b>KN-EB3-10</b>	10/pkg	\$6.00	<b>KN-EB4-10</b>	10/pkg	\$4.75	<b>KN-EB5-10</b>	10/pkg	\$8.50	<b>KN-EB7-10</b>	10/pkg	\$9.75
Technical Specifications												
<b>Description</b>	Screw-type end bracket			Screwless end bracket			Screwless end bracket			Screw-type end bracket		
<b>Bracket Width</b>	8 mm [0.31 in]			8 mm [0.31 in]			8 mm [0.31 in]			10 mm [0.39 in]		
<b>DIN Rail Width</b>	35 mm			35 mm			15 mm			35 mm		
<b>Material</b>	Housing: Polyamide 66 / Clamping Connector: Zinc Plated Steel											
End Bracket Accessories												
<b>Label Holder</b>	—	—	—	<b>KN-MA-1</b>	25/pkg	\$21.50	—	—	—	<b>KN-MA-2</b>	50/pkg	\$54.00
	—	—	—	<b>KN-MA-1-10</b>	10/pkg	\$9.75	—	—	—	<b>KN-MA-2-10</b>	10/pkg	\$12.50
<b>Marking Tags</b>	KN-L5 Series or KN-L6P5 Series											

## End Covers

End covers are used to cover the open side of sectional DIN rail mount terminal blocks. They should be used at the end of an assembly of identical terminal blocks or whenever there is a change in the physical size of the terminal block.

Material: Polyamide 66



End Covers Ordering Information													
Part Number	Color	Dimensions H x L x W mm [in]	Works With	Qty	Price	Part Number	Color	Dimensions H x L x W mm [in]	Works With	Qty	Price		
<b>KN-ECT6GRY</b>	gray	34.0x42.7x1.3 [1.34x1.68x0.05]	KN-T12 KN-T10 KN-T8 KN-T6	100	\$26.50	<b>KN-ECDORG</b>	orange	48.2x63.2x1.3 [1.90x2.49x0.05]	KN-D10 KN-D12	10	\$6.00		
<b>KN-ECT6GRY-25</b>	gray			<b>KN-ECDRED</b>	red								
<b>KN-ECT6BLU</b>	blue			<b>KN-ECDYEL</b>	yellow								
<b>KN-ECT6BLK</b>	black					\$3.00	<b>KN-ECTL</b>	gray	54.7x87.1x1.3 [2.15x3.43x0.05]	KN-TL14	10	\$3.75	
<b>KN-ECT6BRN</b>	brown					\$3.00	<b>KN-ECTLS</b>	gray	54.7x72.8x1.2 [2.15x2.87x0.05]	KN-TL14S	10	\$4.75	
<b>KN-ECT6GRN</b>	green					\$3.00	<b>KN-ECDG12</b>	gray	48.0x71.4x1.2 [1.89x2.81x0.05]	KN-DG12	10	\$4.75	
<b>KN-ECT6ORG</b>	orange					\$3.00	<b>KN-ECTG12</b>	gray	62.5x87.5x1.2 [2.46x3.44x0.05]	KN-TG12	10	\$4.75	
<b>KN-ECT6RED</b>	red					\$3.00	<b>KN-ECMGRY</b>	gray	28.1x27.0x3.0 [1.11x1.06x0.12]	KN-M12 KN-M10	100	\$55.00	
<b>KN-ECT6WHT</b>	white					\$3.00	<b>KN-ECMGRY-10</b>	gray			10	\$6.00	
<b>KN-ECT6YEL</b>	yellow					\$3.00	<b>KN-ECMBLU</b>	blue			10	\$6.00	
<b>KN-ECT4GRY</b>	gray	45.7x52.8x1.2 [1.80x2.08x0.05]	KN-T4	25	\$12.50	<b>KN-ECMGRN</b>	green/yellow	28.1x27.0x3.0 [1.11x1.06x0.12]	KN-MG12 KN-MG10	10	\$6.00		
<b>KN-ECT4BLU</b>	blue					10	\$5.25	<b>KN-ECG12SP4</b>	green/yellow	39.7x57.1x1.2 [1.56x2.25x0.05]	KN-G12SP4	10	\$4.75
<b>KN-ECDGRY</b>	gray	48.2x63.2x1.3 [1.90x2.49x0.05]	KN-D10 KN-D12	25	\$13.50	<b>KN-ECT12SP4</b>	gray	39.7x57.1x1.2 [1.56x2.25x0.05]	KN-T12SP4	25	\$12.00		
<b>KN-ECDBLU</b>	blue					10	\$6.00	<b>KN-ECF10</b>	gray	27.3x59.6x1.2 [1.07x2.35x0.05]	KN-F10	25	\$14.50
<b>KN-ECDBLK</b>	black						\$6.00	<b>KN-ECKBD</b>	gray	37.1x53.5x1.2 [1.46x2.11x0.05]	KN-KDB10	10	\$6.00
<b>KN-ECDGRN</b>	green						\$6.00						



# KONNECT-IT® Accessories

## Separators

Separators are used to segment banks of terminal blocks. Allows you to maintain a single row of terminal blocks, but have separate power source clusters.

Separators Ordering Information							
Part Number	Color	Works With	Dimensions - mm [in]			Qty	Price
			Height	Length	Thickness		
<a href="#">KN-ST1GRY</a>	Gray	KN-T12 KN-T10 KN-T8 KN-T6	39.0 [1.54]	42.5 [1.67]	1.2 [0.05]	10	\$12.50
<a href="#">KN-ST1BLU</a>	Blue						\$4.75
<a href="#">KN-ST1BLK</a>	Black						\$4.75
<a href="#">KN-ST1BRN</a>	Brown						\$4.75
<a href="#">KN-ST1GRN</a>	Green						\$4.75
<a href="#">KN-ST1ORG</a>	Orange						\$4.75
<a href="#">KN-ST1RED</a>	Red						\$4.75
<a href="#">KN-ST1WHT</a>	White						\$4.75
<a href="#">KN-ST1YEL</a>	Yellow						\$4.75
<a href="#">KN-ST2GRY</a>	Gray						KN-T4
<a href="#">KN-ST2BLU</a>	Blue	\$16.00					
<a href="#">KN-ST3GRY</a>	Gray	KN-T2	62.6 [2.46]	53.1 [2.09]	1.5 [0.06]	10	\$8.00
<a href="#">KN-ST3BLU</a>	Blue						\$8.00

**KN-ST1GRY**



## Top Covers and Label Holders

Top Covers and Label Holders Ordering Information							
Part Number	Description	Works With	Dimensions - mm [in]			Qty	Price
			Height	Length	Width		
<a href="#">KN-TC-1</a>	Top cover for Konnect-It terminal block, blank, white	KN-T12 KN-T10 KN-T8 KN-T6	6.8 [0.27]	29.0 [1.14]	5.8 [0.23]	25	\$9.75
<a href="#">KN-TC-1S</a>	Top cover for Konnect-It terminal block, printed electric symbol, white					25	\$14.00
<a href="#">KN-TC-2</a>	Top cover for Konnect-It terminal block, blank, white	KN-T4 KN-T2	7.3 [0.29]	35.8 [1.41]	9.0 [0.35]	25	\$25.00
<a href="#">KN-TC-2S</a>	Top cover for Konnect-It terminal block, printed electric symbol, white					25	\$25.00
<a href="#">KN-MA-1</a>	Label holder for terminal block group. Label media not included. Adhesive label: Apply on top.	KN-EB4	46.2 [1.82]	46.0 [1.81]	11.4 [0.45]	25	\$21.50
<a href="#">KN-MA-1-10</a>	Max label dimensions: 7 x 44 mm (0.28 x 1.73 in).					10	\$9.75
<a href="#">KN-MA-2</a>	Label holder for terminal block group. Label media not included. Adhesive label: Apply on top.	KN-EB7	37.5 [1.48]	46.2 [1.82]	9.5 [0.37]	50	\$54.00
<a href="#">KN-MA-2-10</a>	Max label dimensions: 7 x 44 mm (0.28 x 1.73 in).					10	\$12.50
<a href="#">KN-MA-3</a>	Top mounting marking tag adapter for terminal block. Holds up to (4) L5x5 tags	KN-T4 KN-T2	9.3 [0.36]	36.0 [1.42]	9.0 [0.35]	25	\$14.00
<a href="#">KN-MA-4</a>	Top mounting marking tag adapter for terminal block. Holds up to (4) L5x5 tags	KN-T12 KN-T10 KN-T8 KN-T6	9.0 [0.35]	29.0 [1.14]	5.7 [0.22]	25	\$12.50
<a href="#">KN-MA-5</a>	Label holder for terminal block group. Label media included.	Attaches to any 35mm DIN rail	46.4 [1.83]	44.5 [1.75]	10.0 [0.39]	50	\$44.00
<a href="#">KN-MA-5-25</a>	Max label dimensions: 10 x 38mm (0.39 x 1.50 in). Thickness 0.30 mm (0.01 in)					25	\$27.00

**KN-MA-1**



**KN-MA-2**



**KN-MA-5**



**KN-TC-1 / KN-TC-2**



**KN-TC-1S / KN-TC-2S**



**KN-MA-3**



**KN-MA-4**





# KONNECT-IT® Accessories

## Marking Tags 5 x 5mm

Use with any KONNECT-IT series terminal blocks.



5 x 5mm Marking Tags Ordering Information											
250 Pieces per Package						500 Pieces per Package					
Part Number	Imprint	Price	Part Number	Imprint	Price	Part Number	Imprint	Price	Part Number	Imprint	Price
<a href="#">KN-L5-BLANK-250</a>	Blank	\$11.50	<a href="#">KN-L5-A-250</a>	A	\$11.50	<a href="#">KN-L5-BLANK</a>	Blank	\$18.00	<a href="#">KN-L5-A</a>	A	\$22.00
<a href="#">KN-L5-0-250</a>	0	\$11.50	<a href="#">KN-L5-B-250</a>	B	\$11.50	<a href="#">KN-L5-0</a>	0	\$22.00	<a href="#">KN-L5-B</a>	B	\$22.00
<a href="#">KN-L5-1-250</a>	1	\$11.50	<a href="#">KN-L5-C-250</a>	C	\$11.50	<a href="#">KN-L5-1</a>	1	\$22.00	<a href="#">KN-L5-C</a>	C	\$22.00
<a href="#">KN-L5-2-250</a>	2	\$11.50	<a href="#">KN-L5-D-250</a>	D	\$11.50	<a href="#">KN-L5-2</a>	2	\$22.00	<a href="#">KN-L5-D</a>	D	\$22.00
<a href="#">KN-L5-3-250</a>	3	\$11.50	<a href="#">KN-L5-E-250</a>	E	\$11.50	<a href="#">KN-L5-3</a>	3	\$22.00	<a href="#">KN-L5-E</a>	E	\$22.00
<a href="#">KN-L5-4-250</a>	4	\$11.50	<a href="#">KN-L5-F-250</a>	F	\$11.50	<a href="#">KN-L5-4</a>	4	\$22.00	<a href="#">KN-L5-F</a>	F	\$22.00
<a href="#">KN-L5-5-250</a>	5	\$11.50	<a href="#">KN-L5-G-250</a>	G	\$11.50	<a href="#">KN-L5-5</a>	5	\$22.00	<a href="#">KN-L5-G</a>	G	\$22.00
<a href="#">KN-L5-6-250</a>	6	\$11.50	<a href="#">KN-L5-H-250</a>	H	\$11.50	<a href="#">KN-L5-6</a>	6	\$22.00	<a href="#">KN-L5-H</a>	H	\$22.00
<a href="#">KN-L5-7-250</a>	7	\$11.50	<a href="#">KN-L5-I-250</a>	I	\$11.50	<a href="#">KN-L5-7</a>	7	\$22.00	<a href="#">KN-L5-I</a>	I	\$22.00
<a href="#">KN-L5-8-250</a>	8	\$11.50	<a href="#">KN-L5-J-250</a>	J	\$12.00	<a href="#">KN-L5-8</a>	8	\$22.00	<a href="#">KN-L5-J</a>	J	\$22.50
<a href="#">KN-L5-9-250</a>	9	\$11.50	<a href="#">KN-L5-K-250</a>	K	\$12.00	<a href="#">KN-L5-9</a>	9	\$22.00	<a href="#">KN-L5-K</a>	K	\$22.50
<a href="#">KN-L5-10-250</a>	10	\$11.50	<a href="#">KN-L5-L-250</a>	L	\$11.50	<a href="#">KN-L5-10</a>	10	\$22.00	<a href="#">KN-L5-L</a>	L	\$22.00
<a href="#">KN-L5-1-10-250</a>	1-10	\$11.50	<a href="#">KN-L5-M-250</a>	M	\$12.00	<a href="#">KN-L5-1-10</a>	1-10	\$22.00	<a href="#">KN-L5-M</a>	M	\$22.50
<a href="#">KN-L5-11-20-250</a>	11-20	\$11.50	<a href="#">KN-L5-N-250</a>	N	\$11.50	<a href="#">KN-L5-11-20</a>	11-20	\$22.00	<a href="#">KN-L5-N</a>	N	\$22.00
<a href="#">KN-L5-21-30-250</a>	21-30	\$11.50	<a href="#">KN-L5-O-250</a>	O	\$11.50	<a href="#">KN-L5-21-30</a>	21-30	\$22.00	<a href="#">KN-L5-O</a>	O	\$22.00
<a href="#">KN-L5-31-40-250</a>	31-40	\$11.50	<a href="#">KN-L5-P-250</a>	P	\$12.00	<a href="#">KN-L5-31-40</a>	31-40	\$22.00	<a href="#">KN-L5-P</a>	P	\$22.50
<a href="#">KN-L5-41-50-250</a>	41-50	\$11.50	<a href="#">KN-L5-Q-250</a>	Q	\$12.00	<a href="#">KN-L5-41-50</a>	41-50	\$22.00	<a href="#">KN-L5-Q</a>	Q	\$22.50
<a href="#">KN-L5-1-50-250</a>	1-50	\$11.50	<a href="#">KN-L5-R-250</a>	R	\$11.50	<a href="#">KN-L5-1-50</a>	1-50	\$22.00	<a href="#">KN-L5-R</a>	R	\$22.00
<a href="#">KN-L5-51-100-250</a>	51-100	\$11.50	<a href="#">KN-L5-S-250</a>	S	\$11.50	<a href="#">KN-L5-51-100</a>	51-100	\$22.00	<a href="#">KN-L5-S</a>	S	\$22.00
<a href="#">KN-L5-101-150-250</a>	101-150	\$11.50	<a href="#">KN-L5-T-250</a>	T	\$11.50	<a href="#">KN-L5-101-150</a>	101-150	\$22.00	<a href="#">KN-L5-T</a>	T	\$22.00
<a href="#">KN-L5-151-200-250</a>	151-200	\$11.50	<a href="#">KN-L5-U-250</a>	U	\$12.00	<a href="#">KN-L5-151-200</a>	151-200	\$22.00	<a href="#">KN-L5-U</a>	U	\$22.50
<a href="#">KN-L5-201-250-250</a>	201-250	\$11.50	<a href="#">KN-L5-V-250</a>	V	\$11.50	<a href="#">KN-L5-201-250</a>	201-250	\$22.00	<a href="#">KN-L5-V</a>	V	\$22.00
<a href="#">KN-L5-251-300-250</a>	251-300	\$11.50	<a href="#">KN-L5-W-250</a>	W	\$12.00	<a href="#">KN-L5-251-300</a>	251-300	\$22.00	<a href="#">KN-L5-W</a>	W	\$22.50
<a href="#">KN-L5-301-350-250</a>	301-350	\$11.50	<a href="#">KN-L5-X-250</a>	X	\$11.50	<a href="#">KN-L5-301-350</a>	301-350	\$22.00	<a href="#">KN-L5-X</a>	X	\$22.00
<a href="#">KN-L5-351-400-250</a>	351-400	\$11.50	<a href="#">KN-L5-Y-250</a>	Y	\$11.50	<a href="#">KN-L5-351-400</a>	351-400	\$22.00	<a href="#">KN-L5-Y</a>	Y	\$22.00
<a href="#">KN-L5-401-450-250</a>	401-450	\$11.50	<a href="#">KN-L5-Z-250</a>	Z	\$12.00	<a href="#">KN-L5-401-450</a>	401-450	\$22.00	<a href="#">KN-L5-Z</a>	Z	\$22.50
<a href="#">KN-L5-451-500-250</a>	451-500	\$11.50	<a href="#">KN-L5-POS-250</a>	+	\$11.50	<a href="#">KN-L5-451-500</a>	451-500	\$22.00	<a href="#">KN-L5-POS</a>	+	\$22.00
<a href="#">KN-L5-L1-250</a>	L1	\$11.50	<a href="#">KN-L5-NEG-250</a>	-	\$11.50	<a href="#">KN-L5-L1</a>	L1	\$22.00	<a href="#">KN-L5-NEG</a>	-	\$22.00
<a href="#">KN-L5-L2-250</a>	L2	\$11.50	<a href="#">KN-L5-GND-250</a>	GND	\$11.50	<a href="#">KN-L5-L2</a>	L2	\$22.00	<a href="#">KN-L5-GND</a>	GND	\$22.00
<a href="#">KN-L5-L3-250</a>	L3	\$11.50				<a href="#">KN-L5-L3</a>	L3	\$22.00			

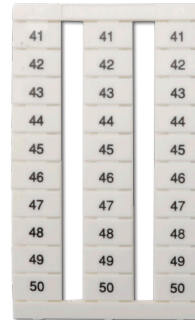


# KONNECT-IT® Accessories

## Marking Tags 6.5 x 10mm

Use with any KONNECT-IT series terminal blocks 6.5mm or wider.

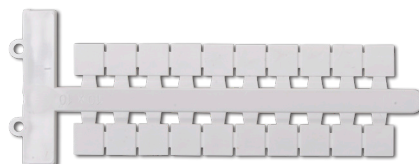
6.5 x 10mm Marking Tags Ordering Information			
Part Number	Description	Qty	Price
<a href="#"><u>KN-L6P5-BLNK-250</u></a>	Blank	250	\$30.00
<a href="#"><u>KN-L6P5-1-10-250</u></a>	Numbered 1-10	250	\$31.50
<a href="#"><u>KN-L6P5-11-20-250</u></a>	Numbered 11-20	250	\$31.50
<a href="#"><u>KN-L6P5-21-30-250</u></a>	Numbered 21-30	250	\$31.50
<a href="#"><u>KN-L6P5-31-40-250</u></a>	Numbered 31-40	250	\$31.50
<a href="#"><u>KN-L6P5-41-50-250</u></a>	Numbered 41-50	250	\$31.50
<a href="#"><u>KN-L6P5-51-60-250</u></a>	Numbered 51-60	250	\$31.50
<a href="#"><u>KN-L6P5-61-70-250</u></a>	Numbered 61-70	250	\$31.50
<a href="#"><u>KN-L6P5-71-80-250</u></a>	Numbered 71-80	250	\$31.50
<a href="#"><u>KN-L6P5-81-90-250</u></a>	Numbered 81-90	250	\$32.00
<a href="#"><u>KN-L6P5-91-100-250</u></a>	Numbered 91-100	250	\$32.00
<a href="#"><u>KN-L6P5-BLNK</u></a>	Blank	500	\$56.00
<a href="#"><u>KN-L6P5-1-10</u></a>	Numbered 1-10	500	\$57.00
<a href="#"><u>KN-L6P5-11-20</u></a>	Numbered 11-20	500	\$57.00
<a href="#"><u>KN-L6P5-21-30</u></a>	Numbered 21-30	500	\$57.00
<a href="#"><u>KN-L6P5-31-40</u></a>	Numbered 31-40	500	\$57.00
<a href="#"><u>KN-L6P5-41-50</u></a>	Numbered 41-50	500	\$57.00
<a href="#"><u>KN-L6P5-51-60</u></a>	Numbered 51-60	500	\$57.00
<a href="#"><u>KN-L6P5-61-70</u></a>	Numbered 61-70	500	\$57.00
<a href="#"><u>KN-L6P5-71-80</u></a>	Numbered 71-80	500	\$57.00
<a href="#"><u>KN-L6P5-81-90</u></a>	Numbered 81-90	500	\$58.00
<a href="#"><u>KN-L6P5-91-100</u></a>	Numbered 91-100	500	\$58.00



## Marking Tags 5 x 10mm, 6 x 10mm, 10 x 10mm

Marking Tags Ordering Information			
Part Number*	Description	Qty	Price
<a href="#"><u>KN-L5X-BLNK-220</u></a>	Blank marking tag, 5x10mm, use with any Konnect-It terminal block series	220	\$10.50
<a href="#"><u>KN-L6X-BLNK-180</u></a>	Blank marking tag, 6x10mm, use with any Konnect-It terminal block 6mm or wider	180	\$9.75
<a href="#"><u>KN-L10X-BLNK-100</u></a>	Blank marking tag, 10x10mm, use with any Konnect-It terminal block 10mm or wider	100	\$14.50
<a href="#"><u>KN-L5X-BLNK</u></a>	Blank marking tag, 5x10mm, use with any Konnect-It terminal block series	440	\$19.50
<a href="#"><u>KN-L6X-BLNK</u></a>	Blank marking tag, 6x10mm, use with any Konnect-It terminal block 6mm or wider	360	\$18.50
<a href="#"><u>KN-L10X-BLNK</u></a>	Blank marking tag, 10x10mm, use with any Konnect-It terminal block 10mm or wider	200	\$26.50

\*Does not fit any KN-T1/0xx or [KN-G1/0](#) series block





# DINnectors<sup>®</sup> Accessories

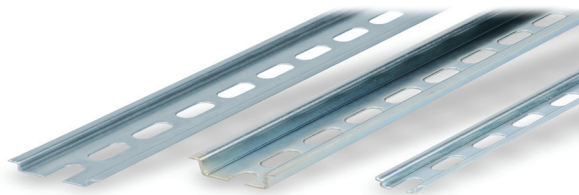
## Steel DIN Rails Features

### 35mm wide

- Available in 1-meter lengths
- 7.5 mm-high rails primarily used to mount terminal blocks, relays, timers and small PLCs such as the BRX, CLICK, DirectLogic and Productivity series. 15mm-high rails for mounting larger and heavier components such as contactors and larger PLCs

### 15mm wide

- Available in 1-meter lengths
- DN-R15S1 exclusively for mounting mini terminal blocks such as the DN-M10-A



Steel DIN Rails Specifications									
	Part Number	Qty	Price	Part Number	Qty	Price	Part Number	Qty	Price
DIN Rail	<a href="#">DN-R35S1</a>	10	\$39.00	<a href="#">DN-R35HS1</a>	10	\$68.00	<a href="#">DN-R15S1</a>	10	\$36.00
	<a href="#">DN-R35S1-2</a>	2	\$11.00	<a href="#">DN-R35HS1-2</a>	2	\$16.50	<a href="#">DN-R15S1-2</a>	2	\$10.00
Description	DINnector DIN rail, slotted, 35mm, 7.5mm height, 1m length, plated steel. Package of 10.			DINnector DIN rail, slotted, 35mm, 15mm height, 1m length, plated steel. Package of 10.			DINnector DIN rail, slotted, 15mm, 5.5mm height, 1m length, plated steel. Package of 2.		
Plating	Zinc-plated and chromated								
International Standards	EN 60715, RoHs								
Suggested Mounting Screw Type	M6			M6			M4		

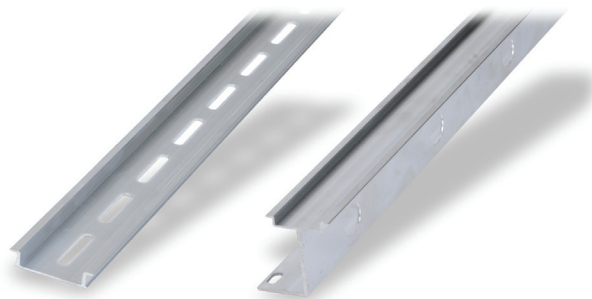
## Aluminum DIN Rail Features

### 35mm wide

- Non-anodized finish
- Zinc plating and passivation (minimum thickness 6 microns)
- Lightweight, easy to cut and deburr
- Terminal blocks only
- Maximum mounting screw #10-32 or M5
- Available in 1-meter lengths

### 35mm wide raised

- Non-anodized finish
- Zinc plating and passivation (minimum thickness 6 microns)
- Enables users to raise terminal blocks 2¼" above the back panel
- Terminal blocks only
- Available in 1-meter lengths
- Bushing or grommet recommended for wire access hole (example Heyco UB-875 not sold by ADC)



Aluminum DIN Rails Specifications						
	Part Number	Qty	Price	Part Number	Qty	Price
DIN Rail	<a href="#">DN-R35SAL1</a>	10	\$60.00	<a href="#">DN-R35SAL2-2</a>	2	\$38.00
	<a href="#">DN-R35SAL1-2</a>	2	\$16.00			
Description	DINnector DIN rail, slotted, 35mm, 10mm height, 1m length, aluminum. Package of 10.			DINnector DIN rail, slotted, 2in raised 35mm, 7.5mm height, 1m length, aluminum. Package of 2.		
Plating	Galvanic zinc plating, non-anodized finish					
International Standards	DIN 50960, RoHs					
Suggested Mounting Screw Type	#10-32 or M5					

# **DINnectors** Accessories

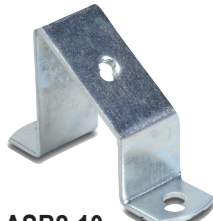
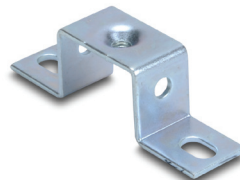
## DIN rail support brackets

- Angled support brackets raise and tilt mounting rails 30 degrees from mounting surface for easier wiring
- [DN-ASB1](#) plated steel support bracket
- [DN-ASB2-10](#) cold-rolled steel treated with galvanic zinc plating and passivation

## DIN rail mounting clips

- Snap small devices not made for mounting onto 35mm DIN rails
- Zinc plated steel

DIN Rail Support Brackets and Mounting Clips			
Part Number	Description	Qty	Price
<a href="#">DN-ASB1</a>	30° angled DIN rail support bracket (M6-1.0 screws not included)	50	\$107.00
<a href="#">DN-ASB2-10</a>	30° angled DIN rail support bracket (M6-1.0 screws included)	10	\$18.00
<a href="#">DN-SSB25-10</a>	1" (25 mm) DIN rail support bracket (M6-1.0 screws included)	10	\$24.50
<a href="#">DN-SSB50-10</a>	2" (50 mm) DIN rail support bracket (M6-1.0 screws included)	10	\$25.50
<a href="#">DN-SSB70-10</a>	2.75" (70 mm) DIN rail support bracket (M6-1.0 screws included)	10	\$32.00
<a href="#">DN-SSB90-10</a>	3.5" (90 mm) DIN rail support bracket (M6-1.0 screws included)	10	\$34.50
<a href="#">DN-CLIP-FM4</a>	DIN rail mounting clip with M4 x 0.7 mm threaded hole (Screws not included)	40	\$66.00
<a href="#">DN-CLIP-FM4-5</a>		5	\$9.50
<a href="#">DN-CLIP-FM5</a>	DIN rail mounting clip with M5 x 0.8 mm threaded hole (Screws not included)	40	\$66.00
<a href="#">DN-CLIP-FM5-5</a>		5	\$9.50

[DN-ASB1](#)[DN-ASB2-10](#)[DN-SSB25-10](#)[DN-SSB50-10](#)[DN-SSB70-10](#)[DN-SSB90-10](#)[DN-CLIP-FM4](#)  
[DN-CLIP-FM4-5](#)[DN-CLIP-FM5](#)  
[DN-CLIP-FM5-5](#)