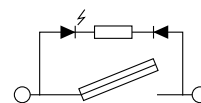
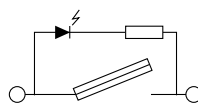
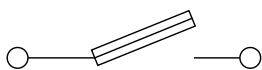




5mm x 20mm Fuse Holder Terminal Blocks



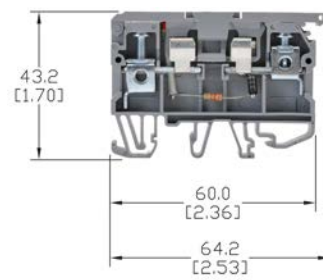
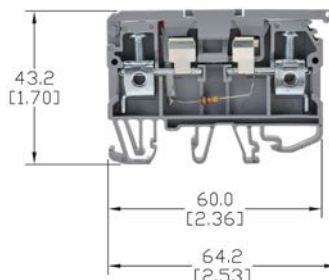
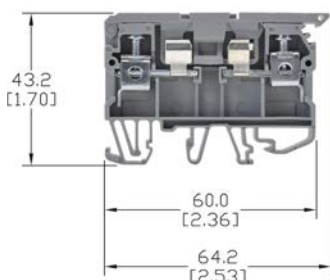
Dimensions: mm [in]

KN-F10

KN-F10LxxDC

KN-F10LxxAC

- Screw connection terminal
- UL E179129 (For copper wire only. One conductor in terminal only.)
- CE (EN 60947-7-3)
- Fuse series: GMA, GMC, S500, S506



See our website: www.AutomationDirect.com for complete engineering drawings

Ordering Information									
Color	Part Number	Qty	Price	Part Number	Qty	Price	Part Number	Qty	Price
Gray	KN-F10	50	\$133.00	KN-F10L24DC	25	\$81.00	KN-F10L24AC	25	\$81.00
	KN-F10-10	10	\$30.00	KN-F10L24DC-10	10	\$35.50	KN-F10L24AC-10	10	\$35.50
	—	—	—	KN-F10L110DC	25	\$81.00	KN-F10L110AC	25	\$81.00
	—	—	—	KN-F10L110DC-10	10	\$35.50	KN-F10L110AC-10	10	\$35.50
	—	—	—	KN-F10L220DC	25	\$81.00	KN-F10L220AC	25	\$81.00
	—	—	—	KN-F10L220DC-10	10	\$35.50	KN-F10L220AC-10	10	\$35.50

Technical Specifications									
Model	KN-F10			KN-F10LxxDC			KN-F10LxxAC		
Width	8mm [0.31 in]			8mm [0.31 in]			8mm [0.31 in]		
Stripping Length	12mm [0.47 in]			12mm [0.47 in]			12mm [0.47 in]		
Tightening Torque	0.8 N·m [7.1 lb·in]			0.8 N·m [7.1 lb·in]			0.8 N·m [7.1 lb·in]		
Density	125/m [38 pcs/ft]			125/m [38 pcs/ft]			125/m [38 pcs/ft]		
UL/CSA Approval	300V	6.3 A	26-8 AWG	300V	6.3A	26-8 AWG	300V	6.3 A	26-8 AWG
CE Conformity	500V	6.3 A	6mm ²	24/110VDC	6.3A	6mm ²	24/110VAC	6.3 A	6mm ²
LED Voltage	—			2 Volts			—		
Resistor Value	—			10kΩ (KN-F10L24DC), 2mA, 9-36VDC 56kΩ (KN-F10L110DC), 2mA, 60-150VDC 220kΩ (KN-F10L220DC), 1mA, 100-250VDC			4.7kΩ (KN-F10L24AC), 2.5 mA, 9-36VAC 33kΩ (KN-F10L110AC), 2mA, 60-150VAC 56kΩ (KN-F10L220AC), 2mA, 100-250VAC		
Operating Temperature	Ambient air temperature: -67 to 185°F [-55 to 85°C], Relative humidity: 50% max at 104°F [40°C] and 90% max at 68°F [20°C]								
SCCR Rating	10kA per Table SB4.1, 2009, UL 508A. Maximum short circuit current rating for unmarked components.								
Material	Current Bar: Copper Alloy / Housing: Polyamide 66 / Screws: Zinc Plated Steel								
DIN Rail Width	35mm								

Accessories									
End Covers / Gray	KN-ECF10	25/pkg	\$14.50	KN-ECF10	25/pkg	\$14.50	KN-ECF10	25/pkg	\$14.50
Marking Tags	KN-L5 Series KN-L6P5 Series			KN-L5 Series KN-L6P5 Series			KN-L5 Series KN-L6P5 Series		



KONNECT-IT Accessories

Multi-Pole Jumper Bars

Multi-pole jumper bars provide terminal block connection flexibility. Screw-down connection jumpers feature all-metal construction and can be installed quickly just by tightening the screws. Screwless comb-style jumpers are also available. See next page for the larger J1/0 jumper installation instructions.

KN-10J12



KN-2JM12



KN-2JCC8



Multi-Pole Jumper Bars Ordering Information												
Type	Part Number	Price	Qty	Number of Poles	Rating		Tightening Torque	Dimensions - mm [in]			Fig.	Works With
					(V)	(A)		Height	Length	Width		
Screw-down connection	KN-2J12	\$12.00	25	2	750	24	0.4–0.6 Nm [3.5–5.3 lb-in]	15.8 [0.62]	10.1 [0.40]	4.4 [0.17]	1	KN-T12xx KN-D12xx KN-D12X KN-D12DR1 KN-D12LEDxx
	KN-3J12	\$14.50	20	3	750	24			15.3 [0.60]			
	KN-4J12	\$18.00	15	4	750	24			20.4 [0.80]			
	KN-10J12	\$12.00	5	10	750	24	0.6–0.8 Nm [5.3–7.1 lb-In]	15.5 [0.61]	51.1 [2.01]	6.0 [0.24]	1	KN-T10xx KN-D10xx KN-D10X KN-D10DR1 KN-D10LEDxx
	KN-2J10	\$17.00	25	2	750	32			10.8 [0.43]			
	KN-3J10	\$20.50	20	3	750	32			17.0 [0.67]			
	KN-4J10	\$20.50	15	4	750	32			23.0 [0.91]			
	KN-10J10	\$14.50	5	10	750	32	59.0 [2.32]	0.6–0.8 Nm [5.3–7.1 lb-In]	15.5 [0.61]	6.0 [0.24]	1	KN-T8xx
	KN-2J8	\$18.00	25	2	630	41	14.3 [0.56]					
	KN-3J8	\$22.00	20	3	630	41	22.3 [0.88]					
	KN-4J8	\$21.50	15	4	630	41	30.3 [1.19]					
	KN-10J8	\$17.00	5	10	630	41	78.3 [3.08]	0.6–0.8 Nm [5.3–7.1 lb-In]	15.5 [0.61]	6.0 [0.24]	1	KN-T6xx
	KN-2J6	\$22.50	25	2	630	57	18.0 [0.71]					
	KN-3J6	\$23.50	20	3	630	57	28.0 [1.10]					
	KN-4J6	\$23.50	15	4	630	57	38.0 [1.50]					
	KN-10J6	\$18.50	5	10	630	57	98.0 [3.86]	0.6–0.8 Nm [5.3–7.1 lb-In]	23.0 [0.91]	6.0 [0.24]	1	KN-T4xx
	KN-2J4	\$35.50	25	2	750	76	21.0 [0.83]					
	KN-3J4	\$37.00	20	3	750	76	33.0 [1.30]					
	KN-4J4	\$37.00	15	4	750	76	45.0 [1.77]					
	KN-10J4	\$29.50	5	10	750	76	117.0 [4.61]	1.2–1.4 Nm [10.6–12.4 lb-In]	21.0 [0.83]	8.0 [0.31]	1	KN-T2xx
KN-2J2	\$36.00	25	2	750	125	29.0 [1.14]						
KN-3J2	\$39.00	20	3	750	125	45.0 [1.77]						
KN-4J2	\$39.00	15	4	750	125	61.0 [2.40]						
KN-10J2	\$29.50	5	10	750	125	157.0 [6.18]	2.5–3.5 Nm [22.1–31.0 lb-In]	22.3 [0.88]	12.0 [0.47]	2	KN-T1/0xx	
KN-2J1/0	\$11.00	5	2	1000	150	36.0 [1.42]						
KN-3J1/0	\$18.50	5	3	1000	150	56.0 [2.20]						
KN-4J1/0	\$23.50	5	4	1000	150	76.0 [2.99]	0.4–0.6 Nm [3.5–5.3 lb-In]	15.5 [0.61]	4.4 [0.17]	1	KN-DG12 KN-TG12 KN-TL14 KN-TL14S KN-TL14SLN KN-TL14SLP	
KN-2JTL12	\$18.50	25	2	440	24	11.0 [0.43]						
KN-3JTL12	\$23.00	20	3	440	24	17.0 [0.67]						
KN-4JTL12	\$21.50	15	4	440	24	23.0 [0.91]	-	23.7 [0.93]	8.0 [0.31]	2.8 [0.11]	4	KN-T12xx KN-T10xx KN-T8xx KN-T6xx
KN-10JTL12	\$18.50	5	10	440	24	59.0 [2.32]						
KN-2JM10	\$11.00	25	2	750	32	9.5 [0.37]						
KN-3JM10	\$13.50	20	3	750	32	15.5 [0.61]						
KN-4JM10	\$15.50	15	4	750	32	21.5 [0.85]						
KN-10JM10	\$14.50	5	10	750	32	57.5 [2.26]						
KN-2JM12	\$10.50	25	2	750	24	8.0 [0.31]						
KN-3JM12	\$12.00	20	3	750	24	13.0 [0.51]						
KN-4JM12	\$12.00	15	4	750	24	18.0 [0.71]						
KN-10JM12	\$13.50	5	10	750	24	48.0 [1.89]						
Screwless Comb-style	KN-2JCC12	\$15.50	25	2	750	24	-	23.7 [0.93]	8.0 [0.31]	2.8 [0.11]	4	KN-T12xx
	KN-2JCC10	\$31.00	25		750	32	-	24.7 [0.97]	9.5 [0.37]			KN-T10xx
	KN-2JCC8	\$32.50	25		630	41	-	25.6 [1.01]	13.5 [0.53]			KN-T8xx
	KN-2JCC6	\$36.00	25		630	57	-	26.7 [1.05]	16.0 [0.63]			3.9 [0.15]

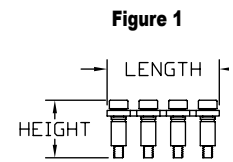


Figure 1

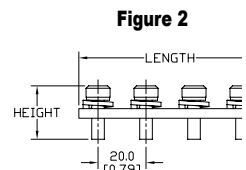


Figure 2

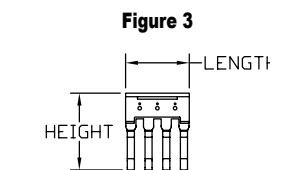


Figure 3

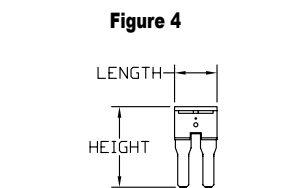


Figure 4

Please visit our website www.AutomationDirect.com for complete engineering drawings.



KONNECT-IT Accessories

End Brackets

End brackets prevent terminal blocks and other DIN rail mount components and devices from moving laterally on the rail. They are constructed from polyamide 66 and available in configurations for 35mm and 15mm DIN rails.

Dimensions mm [in]

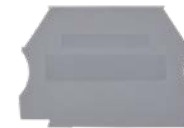


End Brackets Ordering Information												
Gray End Brackets	KN-EB3	100/pkg	\$48.00	KN-EB4	100/pkg	\$50.00	KN-EB5	100/pkg	\$73.00	KN-EB7	50/pkg	\$50.00
	KN-EB3-10	10/pkg	\$6.00	KN-EB4-10	10/pkg	\$4.75	KN-EB5-10	10/pkg	\$8.50	KN-EB7-10	10/pkg	\$9.75
Technical Specifications												
Description	Screw-type end bracket			Screwless end bracket			Screwless end bracket			Screw-type end bracket		
Bracket Width	8 mm [0.31 in]			8 mm [0.31 in]			8 mm [0.31 in]			10 mm [0.39 in]		
DIN Rail Width	35 mm			35 mm			15 mm			35 mm		
Material	Housing: Polyamide 66 / Clamping Connector: Zinc Plated Steel											
End Bracket Accessories												
Label Holder	—	—	—	KN-MA-1	25/pkg	\$21.50	—	—	—	KN-MA-2	50/pkg	\$54.00
	—	—	—	KN-MA-1-10	10/pkg	\$9.75	—	—	—	KN-MA-2-10	10/pkg	\$12.50
Marking Tags	KN-L5 Series or KN-L6P5 Series											

End Covers

End covers are used to cover the open side of sectional DIN rail mount terminal blocks. They should be used at the end of an assembly of identical terminal blocks or whenever there is a change in the physical size of the terminal block.

Material: Polyamide 66



End Covers Ordering Information													
Part Number	Color	Dimensions H x L x W mm [in]	Works With	Qty	Price	Part Number	Color	Dimensions H x L x W mm [in]	Works With	Qty	Price		
KN-ECT6GRY	gray	34.0x42.7x1.3 [1.34x1.68x0.05]	KN-T12 KN-T10 KN-T8 KN-T6	100	\$26.50	KN-ECDORG	orange	48.2x63.2x1.3 [1.90x2.49x0.05]	KN-D10 KN-D12	10	\$6.00		
KN-ECT6GRY-25	gray			KN-ECDRED	red	25	\$6.00						
KN-ECT6BLU	blue			KN-ECDYEL	yellow		\$3.00						
KN-ECT6BLK	black						\$3.00	KN-ECTL	gray	54.7x87.1x1.3 [2.15x3.43x0.05]	KN-TL14	10	\$3.75
KN-ECT6BRN	brown						\$3.00	KN-ECTLS	gray	54.7x72.8x1.2 [2.15x2.87x0.05]	KN-TL14S	10	\$4.75
KN-ECT6GRN	green						\$3.00	KN-ECDG12	gray	48.0x71.4x1.2 [1.89x2.81x0.05]	KN-DG12	10	\$4.75
KN-ECT6ORG	orange						\$3.00	KN-ECTG12	gray	62.5x87.5x1.2 [2.46x3.44x0.05]	KN-TG12	10	\$4.75
KN-ECT6RED	red						\$3.00	KN-ECMGRY	gray	28.1x27.0x3.0 [1.11x1.06x0.12]	KN-M12 KN-M10	100	\$55.00
KN-ECT6WHT	white						\$3.00	KN-ECMGRY-10	gray			10	\$6.00
KN-ECT6YEL	yellow						\$3.00	KN-ECMBLU	blue			10	\$6.00
KN-ECT4GRY	gray	45.7x52.8x1.2 [1.80x2.08x0.05]	KN-T4	25	\$12.50	KN-ECMGRN	green/ yellow	28.1x27.0x3.0 [1.11x1.06x0.12]	KN-MG12 KN-MG10	10	\$6.00		
KN-ECT4BLU	blue					10	\$5.25	KN-ECG12SP4	green/ yellow	39.7x57.1x1.2 [1.56x2.25x0.05]	KN-G12SP4	10	\$4.75
KN-ECDGRY	gray	48.2x63.2x1.3 [1.90x2.49x0.05]	KN-D10 KN-D12	25	\$13.50	KN-ECT12SP4	gray	39.7x57.1x1.2 [1.56x2.25x0.05]	KN-T12SP4	25	\$12.00		
KN-ECDBLU	blue					10	\$6.00	KN-ECF10	gray	27.3x59.6x1.2 [1.07x2.35x0.05]	KN-F10	25	\$14.50
KN-ECDBLK	black						\$6.00	KN-ECKBD	gray	37.1x53.5x1.2 [1.46x2.11x0.05]	KN-KDB10	10	\$6.00
KN-ECDGRN	green						\$6.00						



KONNECT-IT Accessories

Separators

Separators are used to segment banks of terminal blocks. Allows you to maintain a single row of terminal blocks, but have separate power source clusters.

Separators Ordering Information							
Part Number	Color	Works With	Dimensions - mm [in]			Qty	Price
			Height	Length	Thickness		
KN-ST1GRY	Gray	KN-T12 KN-T10 KN-T8 KN-T6	39.0 [1.54]	42.5 [1.67]	1.2 [0.05]	25	\$12.50
KN-ST1BLU	Blue						\$4.75
KN-ST1BLK	Black						\$4.75
KN-ST1BRN	Brown						\$4.75
KN-ST1GRN	Green						\$4.75
KN-ST1ORG	Orange						\$4.75
KN-ST1RED	Red						\$4.75
KN-ST1WHT	White						\$4.75
KN-ST1YEL	Yellow						\$4.75
KN-ST2GRY	Gray						KN-T4
KN-ST2BLU	Blue	\$16.00					
KN-ST3GRY	Gray	KN-T2	62.6 [2.46]	53.1 [2.09]	1.5 [0.06]	10	\$8.00
KN-ST3BLU	Blue						\$8.00

KN-ST1GRY



Top Covers and Label Holders

Top Covers and Label Holders Ordering Information							
Part Number	Description	Works With	Dimensions - mm [in]			Qty	Price
			Height	Length	Width		
KN-TC-1	Top cover for Konnect-It terminal block, blank, white	KN-T12 KN-T10 KN-T8 KN-T6	6.8 [0.27]	29.0 [1.14]	5.8 [0.23]	25	\$9.75
KN-TC-1S	Top cover for Konnect-It terminal block, printed electric symbol, white					25	\$14.00
KN-TC-2	Top cover for Konnect-It terminal block, blank, white	KN-T4 KN-T2	7.3 [0.29]	35.8 [1.41]	9.0 [0.35]	25	\$25.00
KN-TC-2S	Top cover for Konnect-It terminal block, printed electric symbol, white					25	\$25.00
KN-MA-1	Label holder for terminal block group. Label media not included. Adhesive label: Apply on top.	KN-EB4	46.2 [1.82]	46.0 [1.81]	11.4 [0.45]	25	\$21.50
KN-MA-1-10	Max label dimensions: 7 x 44 mm (0.28 x 1.73 in).					10	\$9.75
KN-MA-2	Label holder for terminal block group. Label media not included. Adhesive label: Apply on top.	KN-EB7	37.5 [1.48]	46.2 [1.82]	9.5 [0.37]	50	\$54.00
KN-MA-2-10	Max label dimensions: 7 x 44 mm (0.28 x 1.73 in).					10	\$12.50
KN-MA-3	Top mounting marking tag adapter for terminal block. Holds up to (4) L5x5 tags	KN-T4 KN-T2	9.3 [0.36]	36.0 [1.42]	9.0 [0.35]	25	\$14.00
KN-MA-4	Top mounting marking tag adapter for terminal block. Holds up to (4) L5x5 tags	KN-T12 KN-T10 KN-T8 KN-T6	9.0 [0.35]	29.0 [1.14]	5.7 [0.22]	25	\$12.50
KN-MA-5	Label holder for terminal block group. Label media included.	Attaches to any 35mm DIN rail	46.4 [1.83]	44.5 [1.75]	10.0 [0.39]	50	\$44.00
KN-MA-5-25	Max label dimensions: 10 x 38mm (0.39 x 1.50 in). Thickness 0.30 mm (0.01 in)					25	\$27.00

KN-MA-1



KN-MA-2



KN-MA-5



KN-TC-1 / KN-TC-2



KN-TC-1S / KN-TC-2S



KN-MA-3



KN-MA-4

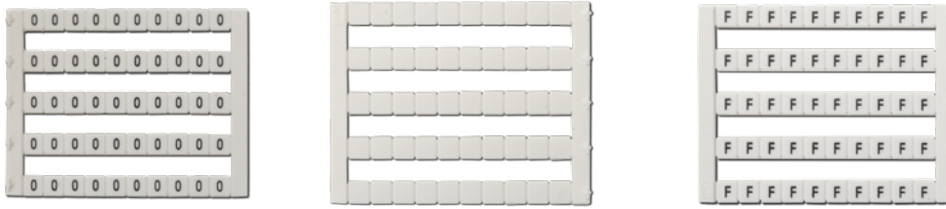




KONNECT-IT Accessories

Marking Tags 5 x 5mm

Use with any KONNECT-IT series terminal blocks.



5 x 5mm Marking Tags Ordering Information											
250 Pieces per Package						500 Pieces per Package					
Part Number	Imprint	Price	Part Number	Imprint	Price	Part Number	Imprint	Price	Part Number	Imprint	Price
<u>KN-L5-BLANK-250</u>	Blank	\$11.50	<u>KN-L5-A-250</u>	A	\$11.50	<u>KN-L5-BLANK</u>	Blank	\$18.00	<u>KN-L5-A</u>	A	\$22.00
<u>KN-L5-0-250</u>	0	\$11.50	<u>KN-L5-B-250</u>	B	\$11.50	<u>KN-L5-0</u>	0	\$22.00	<u>KN-L5-B</u>	B	\$22.00
<u>KN-L5-1-250</u>	1	\$11.50	<u>KN-L5-C-250</u>	C	\$11.50	<u>KN-L5-1</u>	1	\$22.00	<u>KN-L5-C</u>	C	\$22.00
<u>KN-L5-2-250</u>	2	\$11.50	<u>KN-L5-D-250</u>	D	\$11.50	<u>KN-L5-2</u>	2	\$22.00	<u>KN-L5-D</u>	D	\$22.00
<u>KN-L5-3-250</u>	3	\$11.50	<u>KN-L5-E-250</u>	E	\$11.50	<u>KN-L5-3</u>	3	\$22.00	<u>KN-L5-E</u>	E	\$22.00
<u>KN-L5-4-250</u>	4	\$11.50	<u>KN-L5-F-250</u>	F	\$11.50	<u>KN-L5-4</u>	4	\$22.00	<u>KN-L5-F</u>	F	\$22.00
<u>KN-L5-5-250</u>	5	\$11.50	<u>KN-L5-G-250</u>	G	\$11.50	<u>KN-L5-5</u>	5	\$22.00	<u>KN-L5-G</u>	G	\$22.00
<u>KN-L5-6-250</u>	6	\$11.50	<u>KN-L5-H-250</u>	H	\$11.50	<u>KN-L5-6</u>	6	\$22.00	<u>KN-L5-H</u>	H	\$22.00
<u>KN-L5-7-250</u>	7	\$11.50	<u>KN-L5-I-250</u>	I	\$11.50	<u>KN-L5-7</u>	7	\$22.00	<u>KN-L5-I</u>	I	\$22.00
<u>KN-L5-8-250</u>	8	\$11.50	<u>KN-L5-J-250</u>	J	\$12.00	<u>KN-L5-8</u>	8	\$22.00	<u>KN-L5-J</u>	J	\$22.50
<u>KN-L5-9-250</u>	9	\$11.50	<u>KN-L5-K-250</u>	K	\$12.00	<u>KN-L5-9</u>	9	\$22.00	<u>KN-L5-K</u>	K	\$22.50
<u>KN-L5-10-250</u>	10	\$11.50	<u>KN-L5-L-250</u>	L	\$11.50	<u>KN-L5-10</u>	10	\$22.00	<u>KN-L5-L</u>	L	\$22.00
<u>KN-L5-1-10-250</u>	1-10	\$11.50	<u>KN-L5-M-250</u>	M	\$12.00	<u>KN-L5-1-10</u>	1-10	\$22.00	<u>KN-L5-M</u>	M	\$22.50
<u>KN-L5-11-20-250</u>	11-20	\$11.50	<u>KN-L5-N-250</u>	N	\$11.50	<u>KN-L5-11-20</u>	11-20	\$22.00	<u>KN-L5-N</u>	N	\$22.00
<u>KN-L5-21-30-250</u>	21-30	\$11.50	<u>KN-L5-O-250</u>	O	\$11.50	<u>KN-L5-21-30</u>	21-30	\$22.00	<u>KN-L5-O</u>	O	\$22.00
<u>KN-L5-31-40-250</u>	31-40	\$11.50	<u>KN-L5-P-250</u>	P	\$12.00	<u>KN-L5-31-40</u>	31-40	\$22.00	<u>KN-L5-P</u>	P	\$22.50
<u>KN-L5-41-50-250</u>	41-50	\$11.50	<u>KN-L5-Q-250</u>	Q	\$12.00	<u>KN-L5-41-50</u>	41-50	\$22.00	<u>KN-L5-Q</u>	Q	\$22.50
<u>KN-L5-1-50-250</u>	1-50	\$11.50	<u>KN-L5-R-250</u>	R	\$11.50	<u>KN-L5-1-50</u>	1-50	\$22.00	<u>KN-L5-R</u>	R	\$22.00
<u>KN-L5-51-100-250</u>	51-100	\$11.50	<u>KN-L5-S-250</u>	S	\$11.50	<u>KN-L5-51-100</u>	51-100	\$22.00	<u>KN-L5-S</u>	S	\$22.00
<u>KN-L5-101-150-250</u>	101-150	\$11.50	<u>KN-L5-T-250</u>	T	\$11.50	<u>KN-L5-101-150</u>	101-150	\$22.00	<u>KN-L5-T</u>	T	\$22.00
<u>KN-L5-151-200-250</u>	151-200	\$11.50	<u>KN-L5-U-250</u>	U	\$12.00	<u>KN-L5-151-200</u>	151-200	\$22.00	<u>KN-L5-U</u>	U	\$22.50
<u>KN-L5-201-250-250</u>	201-250	\$11.50	<u>KN-L5-V-250</u>	V	\$11.50	<u>KN-L5-201-250</u>	201-250	\$22.00	<u>KN-L5-V</u>	V	\$22.00
<u>KN-L5-251-300-250</u>	251-300	\$11.50	<u>KN-L5-W-250</u>	W	\$12.00	<u>KN-L5-251-300</u>	251-300	\$22.00	<u>KN-L5-W</u>	W	\$22.50
<u>KN-L5-301-350-250</u>	301-350	\$11.50	<u>KN-L5-X-250</u>	X	\$11.50	<u>KN-L5-301-350</u>	301-350	\$22.00	<u>KN-L5-X</u>	X	\$22.00
<u>KN-L5-351-400-250</u>	351-400	\$11.50	<u>KN-L5-Y-250</u>	Y	\$11.50	<u>KN-L5-351-400</u>	351-400	\$22.00	<u>KN-L5-Y</u>	Y	\$22.00
<u>KN-L5-401-450-250</u>	401-450	\$11.50	<u>KN-L5-Z-250</u>	Z	\$12.00	<u>KN-L5-401-450</u>	401-450	\$22.00	<u>KN-L5-Z</u>	Z	\$22.50
<u>KN-L5-451-500-250</u>	451-500	\$11.50	<u>KN-L5-POS-250</u>	+	\$11.50	<u>KN-L5-451-500</u>	451-500	\$22.00	<u>KN-L5-POS</u>	+	\$22.00
<u>KN-L5-L1-250</u>	L1	\$11.50	<u>KN-L5-NEG-250</u>	-	\$11.50	<u>KN-L5-L1</u>	L1	\$22.00	<u>KN-L5-NEG</u>	-	\$22.00
<u>KN-L5-L2-250</u>	L2	\$11.50	<u>KN-L5-GND-250</u>	GND	\$11.50	<u>KN-L5-L2</u>	L2	\$22.00	<u>KN-L5-GND</u>	GND	\$22.00
<u>KN-L5-L3-250</u>	L3	\$11.50				<u>KN-L5-L3</u>	L3	\$22.00			



KONNECT-IT Accessories

Marking Tags 6.5 x 10mm

Use with any KONNECT-IT series terminal blocks 6.5mm or wider.

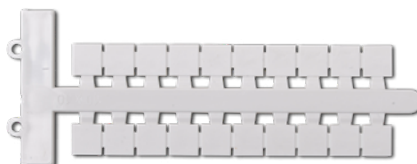
6.5 x 10mm Marking Tags Ordering Information			
Part Number	Description	Qty	Price
<u>KN-L6P5-BLNK-250</u>	Blank	250	\$30.00
<u>KN-L6P5-1-10-250</u>	Numbered 1-10	250	\$31.50
<u>KN-L6P5-11-20-250</u>	Numbered 11-20	250	\$31.50
<u>KN-L6P5-21-30-250</u>	Numbered 21-30	250	\$31.50
<u>KN-L6P5-31-40-250</u>	Numbered 31-40	250	\$31.50
<u>KN-L6P5-41-50-250</u>	Numbered 41-50	250	\$31.50
<u>KN-L6P5-51-60-250</u>	Numbered 51-60	250	\$31.50
<u>KN-L6P5-61-70-250</u>	Numbered 61-70	250	\$31.50
<u>KN-L6P5-71-80-250</u>	Numbered 71-80	250	\$31.50
<u>KN-L6P5-81-90-250</u>	Numbered 81-90	250	\$32.00
<u>KN-L6P5-91-100-250</u>	Numbered 91-100	250	\$32.00
<u>KN-L6P5-BLNK</u>	Blank	500	\$56.00
<u>KN-L6P5-1-10</u>	Numbered 1-10	500	\$57.00
<u>KN-L6P5-11-20</u>	Numbered 11-20	500	\$57.00
<u>KN-L6P5-21-30</u>	Numbered 21-30	500	\$57.00
<u>KN-L6P5-31-40</u>	Numbered 31-40	500	\$57.00
<u>KN-L6P5-41-50</u>	Numbered 41-50	500	\$57.00
<u>KN-L6P5-51-60</u>	Numbered 51-60	500	\$57.00
<u>KN-L6P5-61-70</u>	Numbered 61-70	500	\$57.00
<u>KN-L6P5-71-80</u>	Numbered 71-80	500	\$57.00
<u>KN-L6P5-81-90</u>	Numbered 81-90	500	\$58.00
<u>KN-L6P5-91-100</u>	Numbered 91-100	500	\$58.00



Marking Tags 5 x 10mm, 6 x 10mm, 10 x 10mm

Marking Tags Ordering Information			
Part Number*	Description	Qty	Price
<u>KN-L5X-BLNK-220</u>	Blank marking tag, 5x10mm, use with any Konnect-It terminal block series	220	\$10.50
<u>KN-L6X-BLNK-180</u>	Blank marking tag, 6x10mm, use with any Konnect-It terminal block 6mm or wider	180	\$9.75
<u>KN-L10X-BLNK-100</u>	Blank marking tag, 10x10mm, use with any Konnect-It terminal block 10mm or wider	100	\$14.50
<u>KN-L5X-BLNK</u>	Blank marking tag, 5x10mm, use with any Konnect-It terminal block series	440	\$19.50
<u>KN-L6X-BLNK</u>	Blank marking tag, 6x10mm, use with any Konnect-It terminal block 6mm or wider	360	\$18.50
<u>KN-L10X-BLNK</u>	Blank marking tag, 10x10mm, use with any Konnect-It terminal block 10mm or wider	200	\$26.50

*Does not fit any KN-T1/0xx or [KN-G1/0](#) series block



Accessories

Steel DIN Rails Features

35mm wide

- Available in 1-meter lengths
- 7.5 mm-high rails primarily used to mount terminal blocks, relays, timers and small PLCs such as the BRX, CLICK, DirectLogic and Productivity series. 15mm-high rails for mounting larger and heavier components such as contactors and larger PLCs

15mm wide

- Available in 1-meter lengths
- DN-R15S1 exclusively for mounting mini terminal blocks such as the [DN-M10-A](#)



Steel DIN Rails Specifications									
	Part Number	Qty	Price	Part Number	Qty	Price	Part Number	Qty	Price
DIN Rail	DN-R35S1	10	\$39.00	DN-R35HS1	10	\$68.00	DN-R15S1	10	\$36.00
	DN-R35S1-2	2	\$11.00	DN-R35HS1-2	2	\$16.50	DN-R15S1-2	2	\$10.00
Description	DINnector DIN rail, slotted, 35mm width, 7.5mm height, 1m length, plated steel. Package of 10.			DINnector DIN rail, slotted, 35mm width, 15mm height, 1m length, plated steel. Package of 10.			DINnector DIN rail, slotted, 15mm width, 5.5mm height, 1m length, plated steel. Package of 2.		
Plating	Zinc-plated and chromated								
International Standards	EN 60715, RoHs								
Suggested Mounting Screw Type	M6			M6			M4		

Aluminum DIN Rail Features

35mm wide

- Non-anodized finish
- Zinc plating and passivation (minimum thickness 6 microns)
- Lightweight, easy to cut and deburr
- Terminal blocks only
- Maximum mounting screw #10-32 or M5
- Available in 1-meter lengths

35mm wide raised

- Non-anodized finish
- Zinc plating and passivation (minimum thickness 6 microns)
- Enables users to raise terminal blocks 2¼" above the back panel
- Terminal blocks only
- Available in 1-meter lengths
- Bushing or grommet recommended for wire access hole (example Heyco UB-875 not sold by ADC)



Aluminum DIN Rails Specifications						
	Part Number	Qty	Price	Part Number	Qty	Price
DIN Rail	DN-R35SAL1	10	\$60.00	DN-R35SAL2-2	2	\$38.00
	DN-R35SAL1-2	2	\$16.00			
Description	DINnector DIN rail, slotted, 35mm width, 10mm height, 1m length, aluminum. Package of 10.			DINnector DIN rail, slotted, 2in raised 35mm width, 7.5mm height, 1m length, aluminum. Package of 2.		
Plating	Galvanic zinc plating, non-anodized finish					
International Standards	DIN 50960, RoHs					
Suggested Mounting Screw Type	#10-32 or M5					

DINnectors Accessories

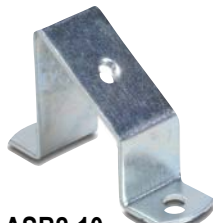
DIN rail support brackets

- Angled support brackets raise and tilt mounting rails 30 degrees from mounting surface for easier wiring
- [DN-ASB1](#) plated steel support bracket
- [DN-ASB2-10](#) cold-rolled steel treated with galvanic zinc plating and passivation

DIN rail mounting clips

- Snap small devices not made for mounting onto 35mm DIN rails
- Zinc plated steel

DIN Rail Support Brackets and Mounting Clips			
Part Number	Description	Qty	Price
DN-ASB1	30° angled DIN rail support bracket (M6-1.0 screws not included)	50	\$107.00
DN-ASB2-10	30° angled DIN rail support bracket (M6-1.0 screws included)	10	\$18.00
DN-SSB25-10	1" (25mm) DIN rail support bracket (M6-1.0 screws included)	10	\$24.50
DN-SSB50-10	2" (50mm) DIN rail support bracket (M6-1.0 screws included)	10	\$25.50
DN-SSB70-10	2.75" (70mm) DIN rail support bracket (M6-1.0 screws included)	10	\$32.00
DN-SSB90-10	3.5" (90mm) DIN rail support bracket (M6-1.0 screws included)	10	\$34.50
DN-CLIP-FM4	DIN rail mounting clip with M4 x 0.7 mm threaded hole (Screws not included)	40	\$66.00
DN-CLIP-FM4-5		5	\$9.50
DN-CLIP-FM5	DIN rail mounting clip with M5 x 0.8 mm threaded hole (Screws not included)	40	\$66.00
DN-CLIP-FM5-5		5	\$9.50

**[DN-ASB1](#)****[DN-ASB2-10](#)****[DN-SSB25-10](#)****[DN-SSB50-10](#)****[DN-SSB70-10](#)****[DN-SSB90-10](#)****[DN-CLIP-FM4](#)
[DN-CLIP-FM4-5](#)****[DN-CLIP-FM5](#)
[DN-CLIP-FM5-5](#)**