

KILLARK XCS Series Control Station Cover Assemblies - Pilot Lights

Listings

- Listed; File E53360
- Class I, Div. 1 & 2, Groups C, D
- Class II, Div. 1 & 2, Groups E, F, G
- Class III
- NEMA 7 (C, D) 9 (E, F, G)
- CSA Certified; File LR11714
- Class I, Zones 1 & 2, Groups IIB, IIA



Pilot Light

Double Pilot
LightPilot Light /
PushbuttonPilot Light /
Two Mini Pushbutton

XCS Pilot Light							
Part Number (cover included)	Price	Drawing Link	Description	Diagram	LED Voltage	Lens Color	Legend Plate Marking
XCS-0B24ALD	\$314.00	PDF	Single pilot light		110 VAC/VDC	Amber	Blank plate
XCS-0B24CLD	\$246.00	PDF	Single pilot light		110 VAC/VDC	Clear	Blank plate
XCS-0B24GLD	\$219.00	PDF	Single pilot light		110 VAC/VDC	Green	Blank plate
XCS-0B24RLD	\$219.00	PDF	Single pilot light		110 VAC/VDC	Red	Blank plate

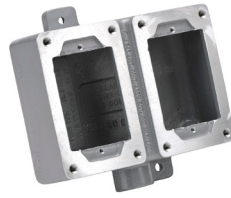
XCS Double Pilot Light							
Part Number (cover included)	Price	Drawing Link	Description	Diagram	LED Voltage	Lens Colors	Legend Plate Marking
XCS-0B30ALD	\$525.00	PDF	Two pilot lights		110 VAC/VDC	Amber Amber	Two blank plates
XCS-0B30CLD	\$322.00	PDF	Two pilot lights		110 VAC/VDC	Clear Clear	Two blank plates
XCS-0B30GLD	\$301.00	PDF	Two pilot lights		110 VAC/VDC	Green Green	Two blank plates
XCS-0B30RLD	\$448.00	PDF	Two pilot lights		110 VAC/VDC	Red Red	Two blank plates
XCS-0B30RLD-GLD	\$322.00	PDF	Two pilot lights		110 VAC/VDC	Red Green	Two blank plates

XCS Momentary Contact Pushbutton and Pilot Light								
Part Number (cover included)	Price	Drawing Link	Description	Diagram	LED Voltage	Pushbutton Color	Lens Color	Legend Plate Marking
XCS-0B13-CD	\$227.00	PDF	1 N.C. momentary operator and pilot light		110 VAC/VDC	Red	Clear	Pushbutton: "STOP" Pilot light: Blank plate
XCS-0B13-OD	\$227.00	PDF	1 N.O. momentary operator and pilot light		110 VAC/VDC	Green	Red	Pushbutton: "START" Pilot light: Blank plate
XCS-0B13-UD	\$286.00	PDF	1 N.O. / 1 N.C. momentary and pilot light		110 VAC/VDC	Black	Red	Two blank plates

XCS Two Mini Momentary Contact Pushbuttons and Pilot Light								
Part Number (cover included)	Price	Drawing Link	Description	Diagram	LED Voltage	Pushbutton Colors	Lens Color	Legend Plate Marking
XCS-0A15D	\$360.00	PDF	Mini red operator with 1 N.C. momentary contact and mini green operator with 1 N.O. momentary contact, and pilot light		110 VAC/VDC	Green Red	Red	N.O. Pushbutton: "START" N.C. Pushbutton: "STOP" Pilot light: Blank plate

* We also offer a large selection of optional legend plates. See accessories later in this section.

KILLARK SWB Series Splice/Device Boxes For Use With XCS Cover Assemblies

**SWB-2****SWB-5****SWB-8****SWB-11****SWB-42**

Listings

- UL Listed; File E53360
- Class I, Div. 1 & 2, Groups C, D
- Class II, Div. 1 & 2, Groups E, F, G
- Class III
- NEMA 7 (C, D) 9 (E, F, G)
- CSA Certified; File LR11712
- Class I, Zones 1 & 2, Groups IIB, IIA



SWB Device Bodies

Part Number	Price	Drawing Link	Description	Hub Size (inches)
<u>SWB-2</u>	\$53.00	PDF	Single gang / Dead-end	3/4
<u>SWB-5</u>	\$54.00	PDF	Single gang / Feed-through	3/4
<u>SWB-8</u>	\$105.00	PDF	Double gang / Dead-end	3/4
<u>SWB-11</u>	\$104.00	PDF	Double gang / Feed-through	3/4
<u>SWB-42</u>	\$152.00	PDF	Single gang / Dead-end / Deep style	3/4
<u>SWB-45</u>	\$186.00	PDF	Single gang / Feed-through / Deep style	3/4