

KILLARK SWB/XCS Series Control Stations Overview - External Sealing Required



Listings

- UL Listed; File E53360
- Class I, Div. 1 & 2, Groups C, D
- Class II, Div. 1 & 2, Groups E, F, G
- Class III
- NEMA 3, 7 (C, D) 9 (E, F, G)
- CSA Certified; File LR11714
- Class I, Zones 1 & 2, Groups IIB, IIA



Applications

- Hazardous locations due to the presence of flammable gases or vapors, combustible dusts or easily ignitable fibers or flyings
- Installations at petroleum refineries, chemical and petrochemical plants and other processing or storage facilities where similar hazards exist
- Use in conjunction with magnetic starters or contactors for remote control of motors

Features

- Device bodies and covers are cast copper-free Aluminum alloy and provide a wide assortment for custom assemblies
- Cast conduit hubs, 3/4", either dead end or feed through standard in both single and two-gang device bodies
- Ground flange joint between bolted cover and box provide required flame path
- Pushbutton, selector switches and pilot light bodies are copper-free aluminum
- Operating shaft in both pushbuttons and selector switches are stainless steel
- Open space between gangs for easy wiring from one cover to another
- Miniature and standard size pushbuttons. (miniature 3/4" overall diameter, standard 1 3/8" overall diameter)
- Internal ground screw

Contact Specifications

All contacts are break before make. Replacement contacts are not available for any of our Killark hazardous duty controls.

AC Ratings				
Current	120 VAC	240 VAC	480 VAC	600 VAC
Inrush	60	30	15	12
Breaking	6	3	1.5	1.2
Carrying	10	10	10	10

DC Ratings (Max. Amps)		
Current	125 VDC	250 VDC
Inrush	0.55	0.275
Breaking	0.55	0.275
Carrying	2.50	2.5

XCS Specifications	
Dielectric Strength	2.5 kV (1 minute)
Electrical Endurance	5 million operations at rated load
Operating Frequency	3,000 per hour
Mechanical Endurance	Momentary: 5×10^6 Push-pull and selector: 2×10^6
LED Consumption	4-6 mA at 110 to 130 VAC/VDC
Electrical Connections	14 to 20 AWG max., solid or stranded
Terminal Torque	1.8 Nm (15.75 in-lbs)
Lamp Connections	9 inch leads, 18 AWG
Operating Temperature	-4° to 104°F (-20° to 40°C)
Device Bodies and Covers Materials	Copper-free Aluminum
Cover Bolts Material	1/4-20 x 7/8 inch Stainless Steel
Bolt Tightening Torque	After tightly attaching cover to device box, check with a 0.0015 inch feeler gauge; it should not enter the flame path joint more than 1/8 inch.

KILLARK XCS Series Cover Assemblies and Control Stations - Pushbuttons

Pushbuttons and Pushbutton/Pilot Light Assemblies



Single Pushbutton



Double Pushbutton



Push-Pull Mushroom Maintained Pushbutton

Listings

- UL Listed; File E53360
- Class I, Div. 1 & 2, Groups C, D
- Class II, Div. 1 & 2, Groups E, F, G
- Class III
- NEMA 3, 7 (C, D) 9 (E, F, G)
- CSA Certified; File LR11714
- Class I, Zones 1 & 2, Groups IIB, IIA



XCS Momentary Contact Single Pushbutton					
Part Number (Includes cover with device)	Price	Description	Diagram	Pushbutton Color	Nameplate Marking*
XCS-0B1	\$134.00	1 N.O. momentary		Green	"START"
XCS-0B2	\$134.00	1 N.C. momentary		Red	"STOP"
XCS-0B3	\$158.00	1 N.O. / 1 N.C. momentary		Black	Blank plate

XCS Momentary Contact Double Pushbutton					
Part Number (Includes cover with device)	Price	Description	Diagram	Pushbutton Colors	Legend Plate Marking*
XCS-0B4	\$175.00	Green operator has 1 N.O. momentary contact and red operator has 1 N.C. momentary contact		Green Red	"START STOP"
XCS-0B4-U	\$226.00	Each operator has 1 N.O. and 1 N.C. momentary contact		Green Red	"START STOP"
XCS-0B5	\$175.00	Each operator has 1 N.O. momentary contact		Green Green	"START START"
XCS-0B7	\$226.00	Each operator has 1 N.O. and 1 N.C. momentary contact		Black Black	Two blank plates

XCS Maintained Contact Push-Pull Mushroom Pushbutton					
Part Number (Includes cover with device)	Price	Description	Diagram	Pushbutton Color	Legend Plate Marking*
XCS-0MMG3	\$430.00	1 N.O. / 1 N.C. push-pull maintained		Green	Three 2-sided legend plates included: "STOP / STOP"; "EMERGENCY STOP / RESET"; Blank plate / "RESET"
XCS-0MMR3	\$430.00	1 N.O. / 1 N.C. push-pull maintained		Red	Three 2-sided legend plates included: "STOP / STOP"; "EMERGENCY STOP / RESET"; Blank plate / "RESET"
XCS-0MMK3	\$430.00	1 N.O. / 1 N.C. push-pull maintained		Black	Three 2-sided legend plates included: "STOP / STOP"; "EMERGENCY STOP / RESET"; Blank plate / "RESET"

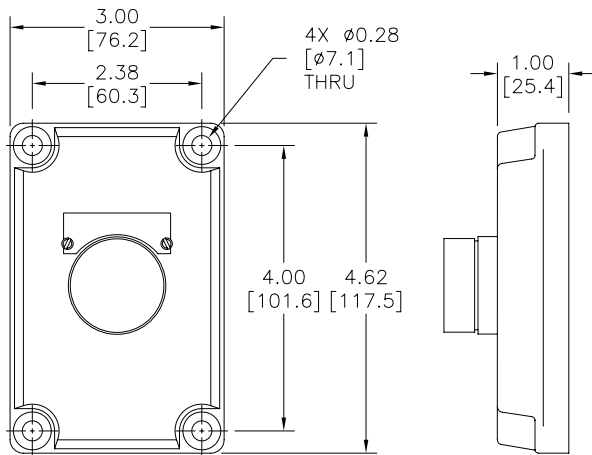
* We also offer a large selection of optional legend plates. See accessories later in this section.

KILLARK Hazardous Location Controls - Dimensions

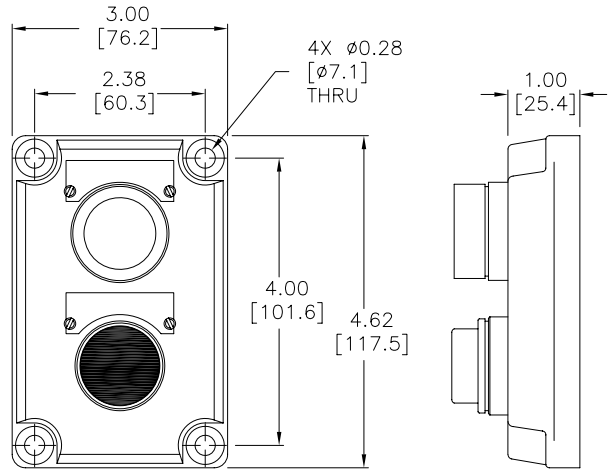
XCS Series Cover Assemblies

Dimensions in inches [mm]

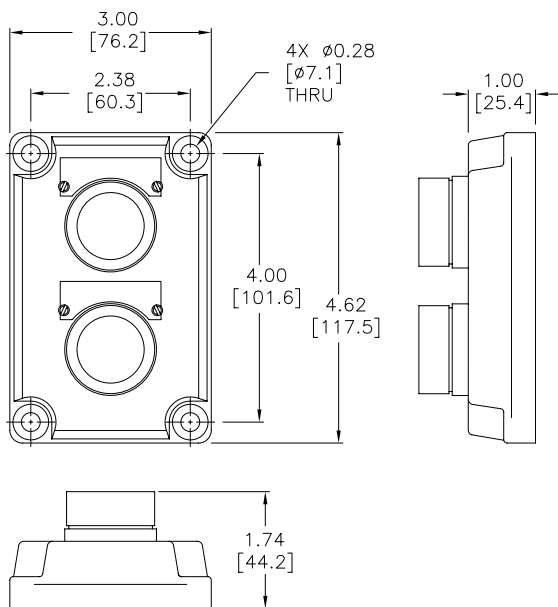
XCS-0B1, -0B2, -0B3



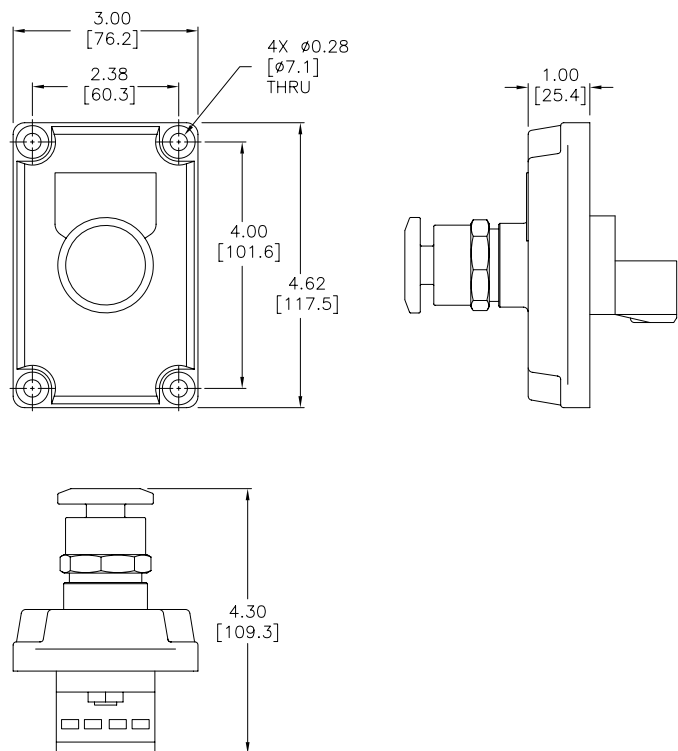
XCS-0B4, -0B4-U



XCS-0B5, -0B7



XCS-0MMG3, -0MMR3, -0MMK3



KILLARK SWB Series Splice/Device Boxes For Use With XCS Cover Assemblies



SWB-2



SWB-5



SWB-8



SWB-11



SWB-42

Listings

- UL Listed; File E53360
- Class I, Div. 1 & 2, Groups C, D
- Class II, Div. 1 & 2, Groups E, F, G
- Class III
- NEMA 3, 7 (C, D) 9 (E, F, G)
- CSA Certified; File LR11712
- Class I, Zones 1 & 2, Groups IIB, IIA



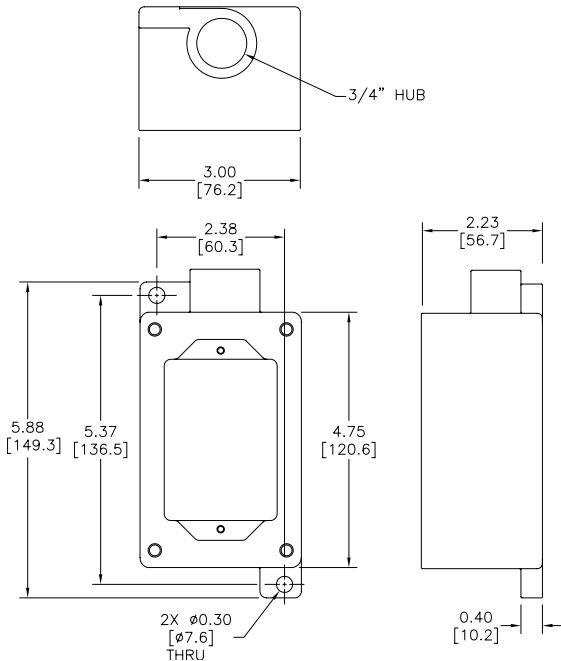
SWB Device Bodies			
Part Number	Price	Description	Hub Size (inches)
SWB-2	\$41.50	Single gang / Dead-end	3/4
SWB-5	\$42.50	Single gang / Feed-through	3/4
SWB-8	\$81.00	Double gang / Dead-end	3/4
SWB-11	\$82.00	Double gang / Feed-through	3/4
SWB-42	\$107.00	Single gang / Dead-end / Deep style	3/4
SWB-45	\$132.00	Single gang / Feed-through / Deep style	3/4

KILLARK Hazardous Location Controls - Dimensions

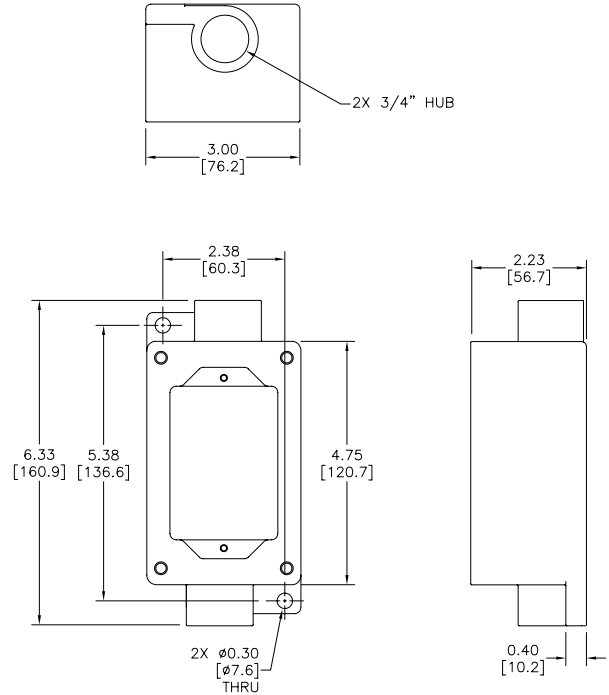
SWB Series Splice/Device Boxes

Dimensions in inches [mm]

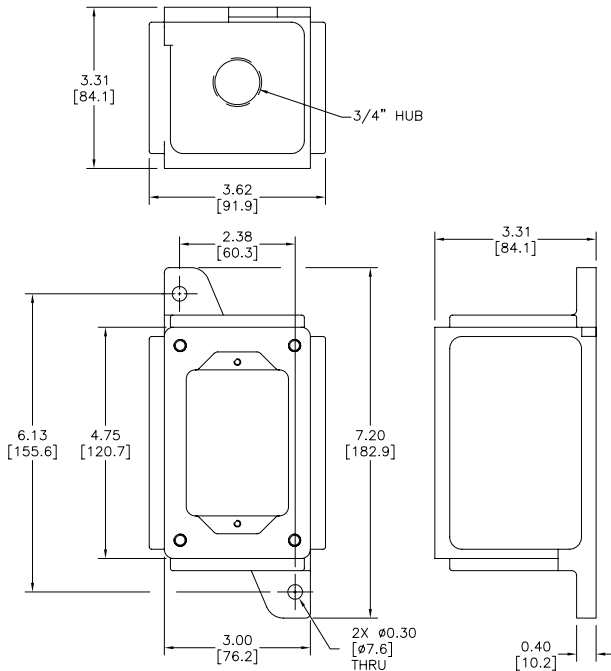
SWB-2



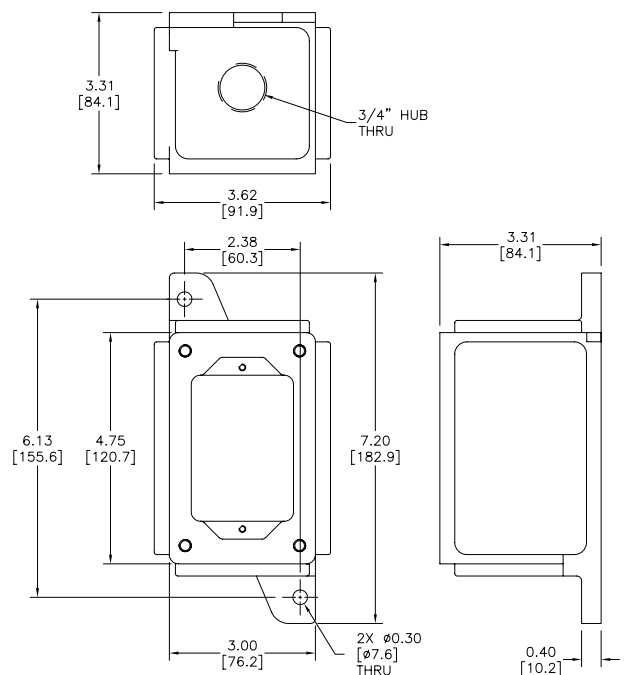
SWB-5



SWB-42



SWB-45

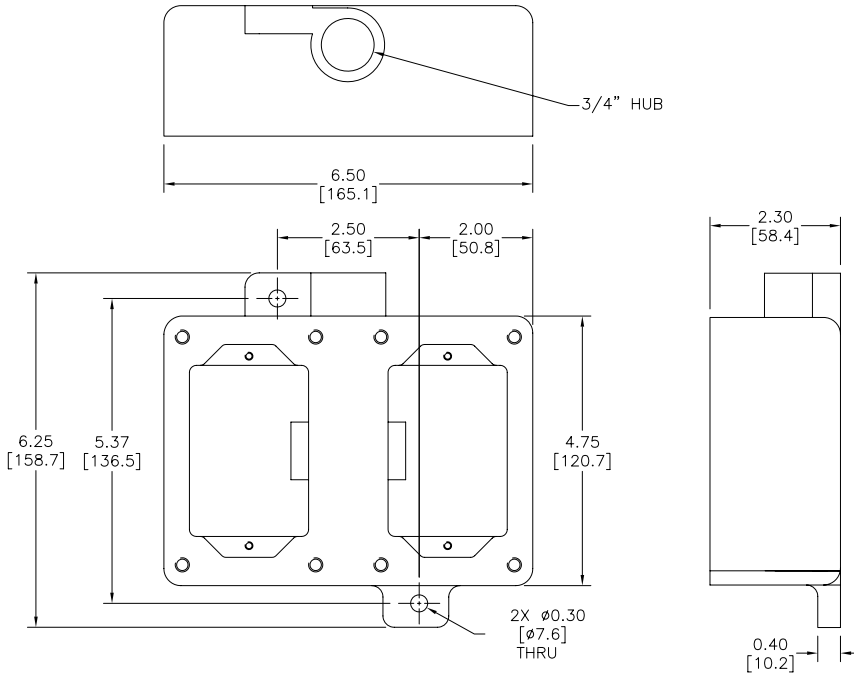


KILLARK Hazardous Location Controls - Dimensions

SWB Series Splice/Device Boxes

Dimensions in inches [mm]

SWB-8



SWB-11

