

IronHorse[®] AC Motor Accessories – 1-Phase

56C/56HC Frame TEFC Motors – Single-Phase – 0.33 to 2 hp – Motor Accessories

Start Capacitors

Single-phase motors use capacitors to provide starting torque when power is first applied to the motor. AutomationDirect offers *spare/replacement* starting capacitors for our single-phase IronHorse motors.

Run Capacitors

In addition to the start capacitors and centrifugal switches, IronHorse 1-1/2 and 2 hp single-phase motors also have run capacitors which allow the motors to develop higher running torque, greater efficiency, and improved power factor. We offer *spare/replacement* run capacitors for single-phase IronHorse motors.

Centrifugal Switches

The start capacitors are no longer needed once the motors begin turning, so they are then taken out of the circuit by a centrifugal switch. We also offer *spare/replacement* switches for our motors.

Stationary Switches

MTR2 series motors have a separate stationary switch that works with the centrifugal switch; both switches are required.

(MTR series motors have only the one centrifugal switch.)



Junction Box
MTAR-JBOX-56



Junction Box
MTA2-JBOX-56



Start Capacitor
MTA-CAP-02



Run Capacitor
MTA-CAP-07



Fan
MTAR-FAN-56



Fan
MTA2-FAN-56



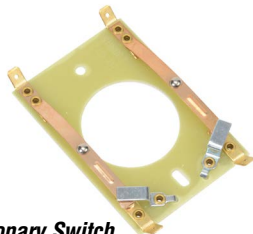
Centrifugal Switch
MTA-CSW-01



Fan Shroud
MTAR-SHROUD-56



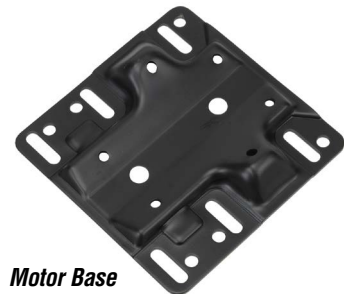
Fan Shroud
MTA2-SHROUD-56



Stationary Switch
MTA-CSW-04



Motor Base
MTAR-BASE-56



Motor Base
MTA2-BASE-56

IronHorse[®] AC Motor Accessories – 1-Phase

56C/56HC Frame TEFC Motors – Single-Phase – 0.33 to 2 hp – Motor Accessories

MTR Series Single-Phase Motor Spare/Replacement Parts (NOT for MTR2 Motors)*								
Part Number	Price	Accessory Type	Capacitance (µF)	Rated Voltage	Dimension Height x Ø (in [mm])	Applicable MTR Motor Number	MTR Motor HP : RPM	
MTA-CAP-01	\$10.50	start capacitor	200	165	3.15 x 1.65 [80.0 x 41.9]	MTR-P33-1AB18	1/3 : 1800	
MTA-CAP-02	\$10.50	start capacitor	250			MTR-P50-1AB18 MTR-P75-1AB18	1/2 : 1800 3/4 : 1800	
MTA-CAP-03	\$10.50	start capacitor	300			MTR-001-1AB18	1 : 1800	
MTA-CAP-04	\$10.50	start capacitor	250			MTR-1P5-1AB18	1-1/2 : 1800	
MTA-CAP-08	\$10.50	start capacitor	400			MTR-1P5-1AB36	1-1/2 : 3600	
MTA-CAP-06	\$10.50	run capacitor	40	450	4.02 x 1.75 [102.1 x 44.5]	MTR-1P5-1AB18	1-1/2 : 1800	
MTA-CAP-09	\$10.50	run capacitor	35		4.0 x 1.8 [101 x 45]	MTR-1P5-1AB36	1-1/2 : 3600	
MTA-CSW-01	\$10.50	centrifugal switch	n/a	250	n/a	MTR-xxx-1AB18	all 1800 rpm	
MTA-CSW-02	\$10.50					MTR-1P5-1AB36	all 3600 rpm	
MTAR-BASE-56	\$12.00	motor base		n/a		n/a	MTR-xxx-1ABxx	all
MTAR-FAN-56	\$12.00	fan						
MTAR-JBOX-56	\$12.00	junction box						
MTAR-SHROUD-56	\$12.00	fan shroud						

* These accessories are spare/replacement components only for MTR series IronHorse motors. Accessories for MTR series motors are not compatible with MTR2 series motors.

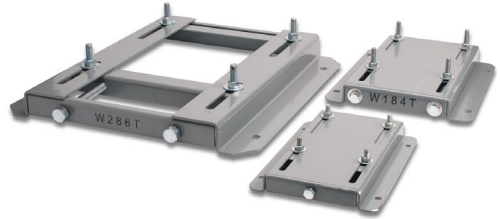
MTR2 Series Single-Phase Motor Spare/Replacement Parts (NOT for MTR Motors)*								
Part Number	Price	Accessory Type	Capacitance (µF)	Rated Voltage	Dimension Height x Ø (in [mm])	Applicable MTR2 Motor Number	MTR2 Motor HP : RPM	
MTA-CAP-10	\$13.00	start capacitor	200	165	2.80 x 1.46 [71.1 x 37.1]	MTR2-P33-1AB36	1/3 : 3600	
MTA-CAP-11	\$14.00	start capacitor	300		MTR2-P33-1AB18 MTR2-P50-1AB36	1/3 : 1800 1/2 : 3600		
MTA-CAP-12	\$15.00	start capacitor	400		MTR2-P50-1AB18 MTR2-P75-1AB36	1/2 : 1800 3/4 : 3600		
MTA-CAP-13	\$22.00	start capacitor	500		MTR2-P75-1AB18 MTR2-001-1AB18 MTR2-001-1AB36	3/4 : 1800 1 : 1800 1 : 3600		
MTA-CAP-14	\$22.00	run capacitor	40	250	3.38 x 1.81 [85.9 x 46.0]	MTR2-1P5-1ABxx MTR2-002-1ABxx	1-1/2 : 1800 1-1/2 : 3600	
MTA-CAP-15	\$38.00	start capacitor	800	165	4.41 x 1.85 [112.0 x 47.0]		2 : 1800 2 : 3600	
MTA-CSW-03	\$11.00	centrifugal switch	n/a	125	n/a	MTR2-xxx-1AB36	all 3600 rpm	
MTA-CSW-04	\$11.00	stationary switch				MTR2-xxx-1ABxx	all	
MTA-CSW-08	\$11.00	centrifugal switch				MTR2-xxx-1AB18	all 1800 rpm	
MTA2-BASE-56	\$12.00	motor base		n/a		n/a	MTR2-xxx-1ABxx	all
MTA2-FAN-56	\$12.00	fan						
MTA2-JBOX-56	\$12.00	junction box						
MTA2-SHROUD-56	\$12.00	fan shroud						

* These accessories are spare/replacement components only for MTR2 series IronHorse motors. Accessories for MTR2 series motors are not compatible with MTR series motors.

STABLE™ Motor Slide Bases

Mounting Slide Bases for 56 to 449T NEMA Motors Features

- Allows adjustment of motor mounting position
- Slide direction is perpendicular to motor shaft
- Double adjusting screws for frames 182T-449T
- Manufactured to precise dimensional standards
- Dimensionally interchangeable with existing major makes
- Heavy-duty steel construction
- Painted with oven-baked primer for better adhesion of customer's paint
- All "D" bolts (motor mounting bolts) are fixed to the exact motor foot pattern
- All "D" bolts are welded into position to prevent spinning and dropping from slots
- Nuts and washers are provided for securing the motor to the slide base

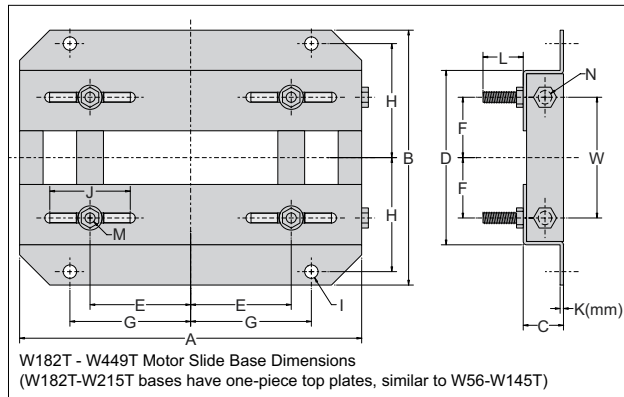
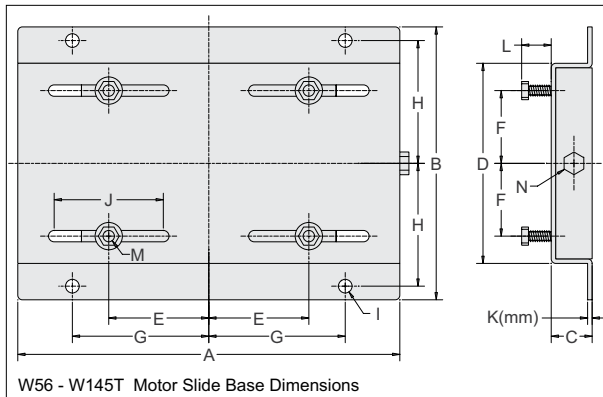


STABLE Motor Slide Bases												
Part Number	Price	Fits Frame Type	Product Weight (lb)	Fits Motor								
				IronHorse	Marathon					NEMA Premium XRI	Blue Chip XRI 230/460V	Blue Chip XRI 575V
					micro-MAX	MAX+	Black Max 230/460V	Black Max 575V	Blue Max			
MTA-BASE-W56*	\$9.75	56*	2.8	MTPM-P3x-1x18 MTPM-P5x-1x18 MTPM-P7x-1x18 MTPM-0xx-1x18 MTPM-1xx-1x18 MTR(2)(P)-xxx-xxxx*	Y500 Y502 Y360 Y362 Y364	Y280 Y281 Y282	Y592(-A772) Y534(-A772) Y535(-A772)	Y555(-A772) Y556(-A772)	-	E2000	-	-
MTA-BASE-W143T	\$18.00	143T/TC	4.6	MTC(P)-001-3BD18(C)(CK) MTC(P)-1P5-3BD36	-	-	Y536(-A772)	-	-	E2001A E2003	-	-
MTA-BASE-W145T	\$18.00	145T/TC	5.1	MTC(P)-001-3BD12 MTC(P)-1P5-3BD18(C)(CK) MTC(P)-002-3BD18(C)(CK) MTC(P)-002-3BD36	Y366 Y368	Y284 Y285	Y537(-A772) Y538(-A772) Y551(-A772)	Y557(-A772)	-	E2002 E2004A E2006 E2007A	-	-
MTA-BASE-W182T	\$24.00	182T/TC	9.2	MTC(P)-1P5-3BD12 MTC(P)-003-3BD18(C)(CK) MTC(P)-003-3BD36 MTF-002-1C18-182	Y1999	Y286A	Y541A(-A772)	Y558A(-A772)	-	E2005 E2009 E2010	-	-
MTA-BASE-W184T	\$24.00	184T/TC	10	MTC(P)-002-3BD12 MTC(P)-005-3BD18(C)(CK) MTC(P)-005-3BD36 MTF-00x-1C18	Y1372	Y287A	Y540(-A772) Y543A(-A772)	Y559A(-A772)	-	E2008 E2012 E2013	-	-
MTA-BASE-W213T	\$35.00	213T/TC	13	MTC(P)-003-3BD12 MTC(P)-7P5-3BD18(C)(CK) MTC(P)-7P5-3BD36	Y994	-	Y542(-A772) Y545(-A772)	Y560(-A772)	-	E2011 E2015 E2016A	-	-
MTA-BASE-W215T	\$35.00	215T/TC	15	MTC(P)-005-3BD12 MTC(P)-010-3BD18(C)(CK) MTC(P)-010-3BD36	Y996	-	Y544(-A772) Y547(-A772)	Y561(-A772)	-	E2014 E2018 E2019A	-	-
MTA-BASE-W254T	\$49.00	254T/TC	18	MTC(P)-7P5-3BD12 MTC(P)-015-3BD18(C)(CK) MTCP-015-3BD36	-	-	Y546(-A772) Y549(-A772)	Y562(-A772)	-	-	E205	E307
MTA-BASE-W256T	\$49.00	256T/TC	19	MTC(P)-010-3BD12 MTC(P)-020-3BD18(C)(CK) MTCP-20-3BD36	-	-	Y548(-A772) Y552(-A772)	Y563(-A772)	-	-	E206	E308
MTA-BASE-W284T	\$54.00	284T/TC	20	MTCP-015-3BD12 MTC(P)-025-3BD18(C)(CK)	-	-	Y553(-A772)	-	-	-	E207	E309
MTA-BASE-W286T	\$54.00	286T/TC	21	MTCP-20-3BD12 MTC(P)-030-3BD18(C)(CK)	-	-	Y393(-A772)	-	-	-	E208	E310
MTA-BASE-W324T	\$81.00	324T/TC	30	MTC(P)-040-3BD18(C)(CK)	-	-	-	-	Y571(-A774) Y513(-A775)	-	E209	E311
MTA-BASE-W326T	\$81.00	326T/TC	31	MTC(P)-050-3BD18(C)(CK)	-	-	-	-	Y572(-A774) Y514(-A775)	-	E210	E312
MTA-BASE-W364T	\$110.00	364T/TC	43	MTC(P)-060-3BD18(C)(CK)	-	-	-	-	Y573(-A774) Y515(-A775)	-	E211	E313
MTA-BASE-W365T	\$110.00	365T/TC	43	MTC(P)-075-3BD18(C)(CK)	-	-	-	-	Y574(-A774) Y516(-A775)	-	E212	E315
MTA-BASE-W404T	\$136.00	404T/TC	58	-	-	-	-	-	-	-	-	-
MTA-BASE-W405T	\$136.00	405T/TC	60	MTC(P)-100-3BD18(C)(CK)	-	-	-	-	Y575(-A774) Y517(-A775)	-	E213	E314
MTA-BASE-W444T	\$157.00	444T	63	MTC(P)-125-3BD18	-	-	-	-	-	-	-	-
MTA-BASE-W445T	\$157.00	445T	65	MTC(P)-150-3BD18	-	-	-	-	-	-	-	-
MTA-BASE-W447T	\$207.00	447T	89	MTC(P)-200-3BD18	-	-	-	-	-	-	-	-
MTA-BASE-W449T	\$207.00	449T	94	MTC-250-3D18 MTC-300-3D18	-	-	-	-	-	-	-	-

* IronHorse MTR2 56HC motors have double-punched bases to fit on slide base MTA-BASE-W56.

STABLE Motor Slide Bases

Dimensions – Mounting Slide Bases for NEMA Motors



Dimensions [inches, except as noted] - STABLE Motor Slide Bases															
MTA-BASE-Wxxxx	A	B	C	D	E	F	G	H	I	J	K(mm)	L	M	N	W
56	10-5/8	6-1/2	1-1/8	4-1/2	2-7/16	1-1/2	3-13/16	2-7/8	3/8	3	2 mm	7/8	5/16 x 1	3/8 x 4	n/a
143T	10-1/2	7-1/2	1-1/8	5-1/2	2-3/4	2	3-3/4	3-3/8	3/8	3	3 mm	13/16	5/16 x 1	3/8 x 4	n/a
145T	10-1/2	8-1/2	1-1/8	6-1/2	2-3/4	2-1/2	3-3/4	3-7/8	3/8	3	3 mm	13/16	5/16 x 1	3/8 x 4	n/a
182T	12-3/4	9-1/2	1-1/2	6-1/2	3-3/4	2-1/4	4-1/2	4-1/4	1/2	3	3.5 mm	1-1/2	3/8 x 1-3/4	1/2 x 6	4-1/2
184T	12-3/4	10-1/2	1-1/2	7-1/2	3-3/4	2-3/4	4-1/2	4-3/4	1/2	3	3.5 mm	1-1/2	3/8 x 1-3/4	1/2 x 6	5-1/2
213T	15	11	1-3/4	7-1/2	4-1/4	2-3/4	5-1/4	4-3/4	1/2	3-1/2	3.8 mm	1-1/2	3/8 x 1-3/4	1/2 x 6	5-1/2
215T	15	12-1/2	1-3/4	9	4-1/4	3-1/2	5-1/4	5-1/2	1/2	3-1/2	3.8 mm	1-1/2	3/8 x 1-3/4	1/2 x 6	7
254T	17-3/4	15-1/8	2	10-3/4	5	4-1/8	6-1/4	6-5/8	5/8	4	4.6 mm	1-7/16	1/2 x 1-3/4	5/8 x 6	5-5/16
256T	17-3/4	16-7/8	2	12-1/2	5	5	6-1/4	7-1/2	5/8	4	4.6 mm	1-7/16	1/2 x 1-3/4	5/8 x 6	7
284T	19-3/4	16-7/8	2	12-1/2	5-1/2	4-3/4	7	7-1/2	5/8	4-1/2	4.6 mm	1-11/16	1/2 x 2	5/8 x 6	7
286T	19-3/4	18-3/8	2	14	5-1/2	5-1/2	7	8-1/4	5/8	4-1/2	4.6 mm	1-11/16	1/2 x 2	5/8 x 6	8
324T	22-3/4	19-1/4	2-1/2	14	6-1/4	5-1/4	8	8-1/2	3/4	5-1/4	4.6 mm	2-3/16	5/8 x 2-1/2	3/4 x 9	7
326T	22-3/4	20-3/4	2-1/2	15-1/2	6-1/4	6	8	9-1/4	3/4	5-1/4	4.6 mm	2-3/16	5/8 x 2-1/2	3/4 x 9	8-1/2
364T	25-1/2	20-1/2	2-1/2	15-1/2	7	5-5/8	9	9-1/8	3/4	6	5.8 mm	2-1/16	5/8 x 2-1/2	3/4 x 9	7-3/4
365T	25-1/2	21-1/2	2-1/2	16-1/2	7	6-1/8	9	9-5/8	3/4	6	5.8 mm	2-1/16	5/8 x 2-1/2	3/4 x 9	8-3/4
404T	28-3/4	22-3/8	3	16-1/2	8	6-1/8	10	9-7/8	7/8	7	5.8 mm	2-1/2	3/4 x 3	3/4 x 11	8-3/4
405T	28-3/4	23-7/8	3	18	8	6-7/8	10	10-5/8	7/8	7	5.8 mm	2-1/2	3/4 x 3	3/4 x 11	10-1/4
444T	31-1/4	24-5/8	3	19-1/4	9	7-1/4	11	11	7/8	7-1/2	5.8 mm	2-1/2	3/4 x 3	3/4 x 11	11
445T	31-1/4	26-5/8	3	21-1/4	9	8-1/4	11	12	7/8	7-1/2	5.8 mm	2-1/2	3/4 x 3	3/4 x 11	13
447T	31-1/4	30-1/8	3	24-3/4	9	10	11	13-3/4	7/8	7-1/2	8 mm	3	3/4 x 3-1/2	3/4 x 11	16-1/2
449T	31-1/4	35-1/8	3	29-3/4	9	12-1/2	11	16-1/4	7/8	7-1/2	8 mm	3	3/4 x 3-1/2	3/4 x 11	21-1/2