

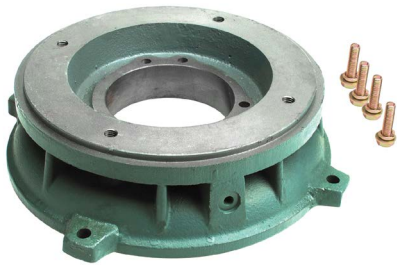
IronHorse[®] MTCP Premium-Efficiency Cast-Iron Three-Phase AC Motors

Premium Efficiency TEFC T-Frame Three-Phase Motor C-Flange Kits – 1 to 200 hp

We stock Premium Efficiency NEMA cast iron T-frame motors from 1–200 hp, and TC-frame motors from 1–100 hp.

We also offer IronHorse cast iron C-flange kits which can be used for C-face mounting of our 1–200 hp IronHorse MTCP Premium Efficiency cast iron T-frame motors.

The kits are field installable and include the C-faces and bolts.



| MTCP Premium-Efficiency T-frame Three-Phase Motor C-Flange Kits | | | | | |
|---|----------|-------------|--|--------------------------------------|------------------------------------|
| Part Number ⁽¹⁾ | Price | Fits Frame | Fits Motor Number ⁽²⁾ | Motor HP | Product Weight (lb) ⁽³⁾ |
| MTAP-CFACE-140TC | \$14.00 | 143T & 145T | MTCP-001-3BD12 MTCP-001-3BD18 MTCP-1P5-3BD18 MTCP-1P5-3BD36 MTCP-002-3BD18 MTCP-002-3BD36 | 1 1 1-1/2 1-1/2 2 2 | 6.8 |
| MTAP-CFACE-180TC | \$19.00 | 182T & 184T | MTCP-1P5-3BD12 MTCP-002-3BD12 MTCP-003-3BD18 MTCP-003-3BD36 MTCP-005-3BD18 MTCP-005-3BD36 | 1-1/2 2 3 3 5 5 | 14.3 |
| MTAP-CFACE-210TC | \$26.00 | 213T & 215T | MTCP-003-3BD12 MTCP-005-3BD12 MTCP-7P5-3BD18 MTCP-7P5-3BD36 MTCP-010-3BD18 MTCP-010-3BD36 | 3 5 7-1/2 7-1/2 10 10 | 13.8 |
| MTAP-CFACE-250TC | \$44.00 | 254T & 256T | MTCP-7P5-3BD12 MTCP-010-3BD12 MTCP-015-3BD18 MTCP-015-3BD36 MTCP-020-3BD18 MTCP-020-3BD36 | 7-1/2 10 15 15 20 20 | 40.1 |
| MTAP-CFACE-280TC | \$55.00 | 284T & 286T | MTCP-015-3BD12 MTCP-020-3BD12 MTCP-025-3BD18 MTCP-030-3BD18 | 15 20 25 30 | 44.0 |
| MTAP-CFACE-320TC | \$76.00 | 324T & 326T | MTCP-040-3BD18 MTCP-050-3BD18 | 40 50 | 61.7 |
| MTAP-CFACE-360TC | \$110.00 | 364T & 365T | MTCP-060-3BD18 MTCP-075-3BD18 | 60 75 | 70.5 |
| MTAP-CFACE-400TC | \$168.00 | 405T | MTCP-100-3BD18 | 100 | 136.6 |
| MTAP-CFACE-444TC | \$177.00 | 444T & 445T | MTCP-125-3BD18 MTCP-150-3BD18 | 125 150 | 143.2 |
| MTAP-CFACE-447TC | \$177.00 | 445/7T | MTCP-200-3BD18 | 200 | 144.4 |

1) Please review the AutomationDirect Terms & Conditions for warranty and service on this product.
 2) MTAP-CFACE C-flange kits will NOT fit MTC EPAct motors.
 3) Certain heavy and oversized items can be shipped only via LTL.
 Check our web site for current shipping method constraints by part number.

IronHorse® MTCP Premium-Efficiency Cast-Iron Three-Phase AC Motors

Premium Efficiency TEFC Three-Phase Motor Replacement Parts – 1 to 200 hp

We stock MTCP Premium Efficiency NEMA cast iron T-frame motors from 1–200 hp, and TC-frame motors from 1–100 hp.

We also offer IronHorse junction boxes, TEFC fans, and TEFC fan shrouds as direct replacement parts for these MTCP motors.

These replacement parts are field installable. Instructions included.



| MTCP Premium-Efficiency Three-Phase Motor Replacement Parts | | | | | | |
|---|----------|-------------------------------------|------------|--|--------------------------|------------------|
| Part Number ⁽¹⁾ | Price | Description ⁽²⁾⁽³⁾⁽⁴⁾ | Fits Frame | Fits PE Motor Number ⁽¹⁾ | Motor HP | Product Wt. (lb) |
| MTAP-FAN-140 | \$22.00 | Replacement Fan | 143 & 145 | MTCP-001-3BD12 | 1 | 0.3 |
| MTAP-SHROUD-140 | \$18.00 | Replacement Fan Shroud | | MTCP-001-3BD18(C) | 1 | 1.1 |
| MTAP-JBOX-140 | \$18.00 | Replacement Junction Box | | MTCP-1P5-3BD18(C) MTCP-1P5-3BD36 MTCP-002-3BD18(C) MTCP-002-3BD36 | 1-1/2 1-1/2 2 2 | |
| MTAP-FAN-180 | \$22.00 | Replacement Fan | 182 & 184 | MTCP-1P5-3BD12 | 1-1/2 | 0.3 |
| MTAP-SHROUD-180 | \$25.00 | Replacement Fan Shroud | | MTCP-002-3BD12 MTCP-003-3BD18(C) MTCP-003-3BD36 | 2 3 3 | 1.5 |
| MTAP-JBOX-180 | \$26.00 | Replacement Junction Box | | MTCP-005-3BD18(C) MTCP-005-3BD36 | 5 5 | |
| MTAP-FAN-210-2 | \$26.00 | Replacement Fan (for 2-pole motors) | 213 & 215 | MTCP-7P5-3BD36 MTCP-010-3BD36 | 7-1/2 10 | 0.3 |
| MTAP-FAN-210 | \$26.00 | Replacement Fan (4&6-pole) | | MTCP-003-3BD12 | 3 | 0.3 |
| MTAP-SHROUD-210 | \$26.00 | Replacement Fan Shroud | | MTCP-005-3BD12 MTCP-7P5-3BD18(C) MTCP-010-3BD18(C) | 5 7-1/2 10 | 2.3 |
| MTAP-JBOX-210 | \$26.00 | Replacement Junction Box | | | | |
| MTAP-FAN-250-2 | \$44.00 | Replacement Fan (for 2-pole motors) | 254 & 256 | MTCP-015-3BD36 MTCP-020-3BD36 | 15 20 | 0.3 |
| MTAP-FAN-250 | \$44.00 | Replacement Fan (4&6-pole) | | MTCP-7P5-3BD12 | 7-1/2 | 0.3 |
| MTAP-SHROUD-250 | \$44.00 | Replacement Fan Shroud | | MTCP-010-3BD12 MTCP-015-3BD18(C) MTCP-020-3BD18(C) | 10 15 20 | 4.5 |
| MTAP-JBOX-250 | \$44.00 | Replacement Junction Box | | | | |
| MTAP-FAN-280 | \$61.00 | Replacement Fan | 284 & 286 | MTCP-015-3BD12 | 15 | 0.5 |
| MTAP-SHROUD-280 | \$65.00 | Replacement Fan Shroud | | MTCP-020-3BD12 MTCP-025-3BD18(C) MTCP-030-3BD18(C) | 20 25 30 | 6.5 |
| MTAP-JBOX-280 | \$78.00 | Replacement Junction Box | | | | |
| MTAP-FAN-320 | \$78.00 | Replacement Fan | 324 & 326 | MTCP-040-3BD18(C) MTCP-050-3BD18(C) | 40 50 | 0.6 |
| MTAP-SHROUD-320 | \$78.00 | Replacement Fan Shroud | | | | 8.3 |
| MTAP-JBOX-320 | \$78.00 | Replacement Junction Box | | | | 22.3 |
| MTAP-FAN-360 | \$130.00 | Replacement Fan | 364 & 365 | MTCP-060-3BD18(C) MTCP-075-3BD18(C) | 60 75 | 0.6 |
| MTAP-SHROUD-360 | \$122.00 | Replacement Fan Shroud | | | | 9.0 |
| MTAP-JBOX-360 | \$148.00 | Replacement Junction Box | | | | 22.3 |
| MTAP-FAN-400 | \$156.00 | Replacement Fan | 405 | MTCP-100-3BD18(C) | 100 | 1.1 |
| MTAP-SHROUD-400 | \$148.00 | Replacement Fan Shroud | | | | 15.8 |
| MTAP-JBOX-400 | \$148.00 | Replacement Junction Box | | | | 30.0 |
| MTAP-FAN-440 | \$173.00 | Replacement Fan | 444 & 445 | MTCP-125-3BD18 | 125 | 2.0 |
| MTAP-SHROUD-440 | \$165.00 | Replacement Fan Shroud | | MTCP-150-3BD18 MTCP-200-3BD18 | 150 200 | 17.5 |
| MTAP-JBOX-440 | \$165.00 | Replacement Junction Box | | | | |

1) These MTAP replacement components fit only MTCP Premium Efficiency motors; they will NOT fit MTC EPart motors.

2) Replacement Fans include fan and snap ring.

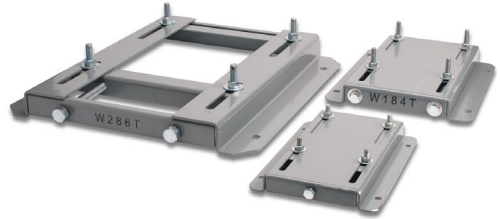
3) Replacement Fan Shrouds include shroud, bolts w/washers, and rubber plug.

4) Replacement Junction Boxes include gasketed base & cover assembly, base gasket, and base bolts.

STABLE™ Motor Slide Bases

Mounting Slide Bases for 56 to 449T NEMA Motors Features

- Allows adjustment of motor mounting position
- Slide direction is perpendicular to motor shaft
- Double adjusting screws for frames 182T-449T
- Manufactured to precise dimensional standards
- Dimensionally interchangeable with existing major makes
- Heavy-duty steel construction
- Painted with oven-baked primer for better adhesion of customer's paint
- All "D" bolts (motor mounting bolts) are fixed to the exact motor foot pattern
- All "D" bolts are welded into position to prevent spinning and dropping from slots
- Nuts and washers are provided for securing the motor to the slide base

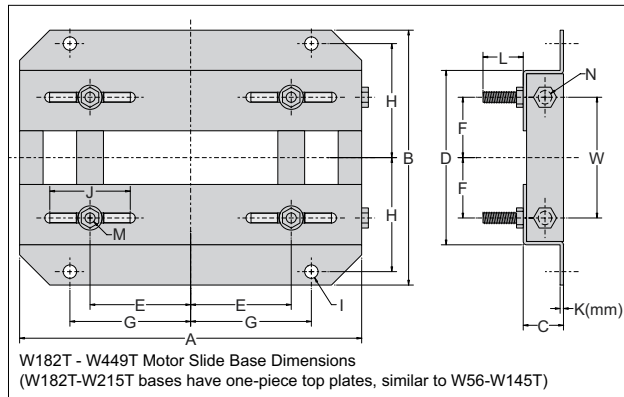
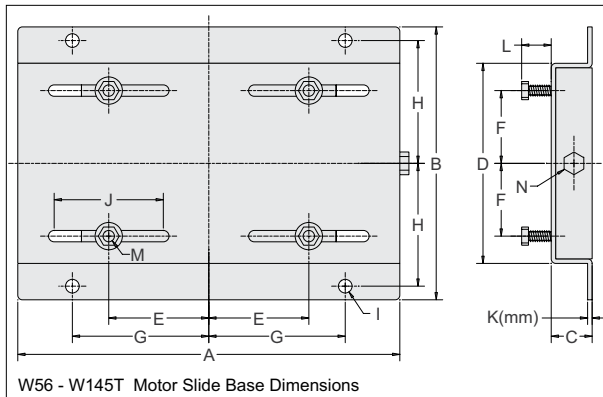


| STABLE Motor Slide Bases | | | | | | | | | | | | |
|--------------------------|----------|-----------------|---------------------|--|--------------------------------------|----------------------|---|----------------------------|----------------------------|------------------------------------|------------------------|--------------------|
| Part Number | Price | Fits Frame Type | Product Weight (lb) | Fits Motor | | | | | | | | |
| | | | | IronHorse | Marathon | | | | | NEMA Premium XRI | Blue Chip XRI 230/460V | Blue Chip XRI 575V |
| | | | | | micro-MAX | MAX+ | Black Max 230/460V | Black Max 575V | Blue Max | | | |
| MTA-BASE-W56* | \$9.75 | 56* | 2.8 | MTPM-P3x-1x18 MTPM-P5x-1x18 MTPM-P7x-1x18 MTPM-0xx-1x18 MTPM-1xx-1x18 MTR(2)(P)-xxx-xxxx* | Y500 Y502 Y360 Y362 Y364 | Y280 Y281 Y282 | Y592(-A772) Y534(-A772) Y535(-A772) | Y555(-A772) Y556(-A772) | - | E2000 | - | - |
| MTA-BASE-W143T | \$18.00 | 143T/TC | 4.6 | MTC(P)-001-3BD18(C)(CK) MTC(P)-1P5-3BD36 | - | - | Y536(-A772) | - | - | E2001A E2003 | - | - |
| MTA-BASE-W145T | \$18.00 | 145T/TC | 5.1 | MTC(P)-001-3BD12 MTC(P)-1P5-3BD18(C)(CK) MTC(P)-002-3BD18(C)(CK) MTC(P)-002-3BD36 | Y366 Y368 | Y284 Y285 | Y537(-A772) Y538(-A772) Y551(-A772) | Y557(-A772) | - | E2002 E2004A E2006 E2007A | - | - |
| MTA-BASE-W182T | \$24.00 | 182T/TC | 9.2 | MTC(P)-1P5-3BD12 MTC(P)-003-3BD18(C)(CK) MTC(P)-003-3BD36 MTF-002-1C18-182 | Y1999 | Y286A | Y541A(-A772) | Y558A(-A772) | - | E2005 E2009 E2010 | - | - |
| MTA-BASE-W184T | \$24.00 | 184T/TC | 10 | MTC(P)-002-3BD12 MTC(P)-005-3BD18(C)(CK) MTC(P)-005-3BD36 MTF-00x-1C18 | Y1372 | Y287A | Y540(-A772) Y543A(-A772) | Y559A(-A772) | - | E2008 E2012 E2013 | - | - |
| MTA-BASE-W213T | \$35.00 | 213T/TC | 13 | MTC(P)-003-3BD12 MTC(P)-7P5-3BD18(C)(CK) MTC(P)-7P5-3BD36 | Y994 | - | Y542(-A772) Y545(-A772) | Y560(-A772) | - | E2011 E2015 E2016A | - | - |
| MTA-BASE-W215T | \$35.00 | 215T/TC | 15 | MTC(P)-005-3BD12 MTC(P)-010-3BD18(C)(CK) MTC(P)-010-3BD36 | Y996 | - | Y544(-A772) Y547(-A772) | Y561(-A772) | - | E2014 E2018 E2019A | - | - |
| MTA-BASE-W254T | \$49.00 | 254T/TC | 18 | MTC(P)-7P5-3BD12 MTC(P)-015-3BD18(C)(CK) MTCP-015-3BD36 | - | - | Y546(-A772) Y549(-A772) | Y562(-A772) | - | - | E205 | E307 |
| MTA-BASE-W256T | \$49.00 | 256T/TC | 19 | MTC(P)-010-3BD12 MTC(P)-020-3BD18(C)(CK) MTCP-20-3BD36 | - | - | Y548(-A772) Y552(-A772) | Y563(-A772) | - | - | E206 | E308 |
| MTA-BASE-W284T | \$54.00 | 284T/TC | 20 | MTCP-015-3BD12 MTC(P)-025-3BD18(C)(CK) | - | - | Y553(-A772) | - | - | - | E207 | E309 |
| MTA-BASE-W286T | \$54.00 | 286T/TC | 21 | MTCP-20-3BD12 MTC(P)-030-3BD18(C)(CK) | - | - | Y393(-A772) | - | - | - | E208 | E310 |
| MTA-BASE-W324T | \$81.00 | 324T/TC | 30 | MTC(P)-040-3BD18(C)(CK) | - | - | - | - | Y571(-A774) Y513(-A775) | - | E209 | E311 |
| MTA-BASE-W326T | \$81.00 | 326T/TC | 31 | MTC(P)-050-3BD18(C)(CK) | - | - | - | - | Y572(-A774) Y514(-A775) | - | E210 | E312 |
| MTA-BASE-W364T | \$110.00 | 364T/TC | 43 | MTC(P)-060-3BD18(C)(CK) | - | - | - | - | Y573(-A774) Y515(-A775) | - | E211 | E313 |
| MTA-BASE-W365T | \$110.00 | 365T/TC | 43 | MTC(P)-075-3BD18(C)(CK) | - | - | - | - | Y574(-A774) Y516(-A775) | - | E212 | E315 |
| MTA-BASE-W404T | \$136.00 | 404T/TC | 58 | - | - | - | - | - | - | - | - | - |
| MTA-BASE-W405T | \$136.00 | 405T/TC | 60 | MTC(P)-100-3BD18(C)(CK) | - | - | - | - | Y575(-A774) Y517(-A775) | - | E213 | E314 |
| MTA-BASE-W444T | \$157.00 | 444T | 63 | MTC(P)-125-3BD18 | - | - | - | - | - | - | - | - |
| MTA-BASE-W445T | \$157.00 | 445T | 65 | MTC(P)-150-3BD18 | - | - | - | - | - | - | - | - |
| MTA-BASE-W447T | \$207.00 | 447T | 89 | MTC(P)-200-3BD18 | - | - | - | - | - | - | - | - |
| MTA-BASE-W449T | \$207.00 | 449T | 94 | MTC-250-3D18 MTC-300-3D18 | - | - | - | - | - | - | - | - |

* IronHorse MTR2 56HC motors have double-punched bases to fit on slide base MTA-BASE-W56.

STABLE Motor Slide Bases

Dimensions – Mounting Slide Bases for NEMA Motors



| Dimensions [inches, except as noted] - STABLE Motor Slide Bases | | | | | | | | | | | | | | | |
|---|--------|--------|-------|--------|--------|--------|---------|--------|-----|-------|--------|---------|-------------|----------|--------|
| MTA-BASE-Wxxxx | A | B | C | D | E | F | G | H | I | J | K(mm) | L | M | N | W |
| 56 | 10-5/8 | 6-1/2 | 1-1/8 | 4-1/2 | 2-7/16 | 1-1/2 | 3-13/16 | 2-7/8 | 3/8 | 3 | 2 mm | 7/8 | 5/16 x 1 | 3/8 x 4 | n/a |
| 143T | 10-1/2 | 7-1/2 | 1-1/8 | 5-1/2 | 2-3/4 | 2 | 3-3/4 | 3-3/8 | 3/8 | 3 | 3 mm | 13/16 | 5/16 x 1 | 3/8 x 4 | n/a |
| 145T | 10-1/2 | 8-1/2 | 1-1/8 | 6-1/2 | 2-3/4 | 2-1/2 | 3-3/4 | 3-7/8 | 3/8 | 3 | 3 mm | 13/16 | 5/16 x 1 | 3/8 x 4 | n/a |
| 182T | 12-3/4 | 9-1/2 | 1-1/2 | 6-1/2 | 3-3/4 | 2-1/4 | 4-1/2 | 4-1/4 | 1/2 | 3 | 3.5 mm | 1-1/2 | 3/8 x 1-3/4 | 1/2 x 6 | 4-1/2 |
| 184T | 12-3/4 | 10-1/2 | 1-1/2 | 7-1/2 | 3-3/4 | 2-3/4 | 4-1/2 | 4-3/4 | 1/2 | 3 | 3.5 mm | 1-1/2 | 3/8 x 1-3/4 | 1/2 x 6 | 5-1/2 |
| 213T | 15 | 11 | 1-3/4 | 7-1/2 | 4-1/4 | 2-3/4 | 5-1/4 | 4-3/4 | 1/2 | 3-1/2 | 3.8 mm | 1-1/2 | 3/8 x 1-3/4 | 1/2 x 6 | 5-1/2 |
| 215T | 15 | 12-1/2 | 1-3/4 | 9 | 4-1/4 | 3-1/2 | 5-1/4 | 5-1/2 | 1/2 | 3-1/2 | 3.8 mm | 1-1/2 | 3/8 x 1-3/4 | 1/2 x 6 | 7 |
| 254T | 17-3/4 | 15-1/8 | 2 | 10-3/4 | 5 | 4-1/8 | 6-1/4 | 6-5/8 | 5/8 | 4 | 4.6 mm | 1-7/16 | 1/2 x 1-3/4 | 5/8 x 6 | 5-5/16 |
| 256T | 17-3/4 | 16-7/8 | 2 | 12-1/2 | 5 | 5 | 6-1/4 | 7-1/2 | 5/8 | 4 | 4.6 mm | 1-7/16 | 1/2 x 1-3/4 | 5/8 x 6 | 7 |
| 284T | 19-3/4 | 16-7/8 | 2 | 12-1/2 | 5-1/2 | 4-3/4 | 7 | 7-1/2 | 5/8 | 4-1/2 | 4.6 mm | 1-11/16 | 1/2 x 2 | 5/8 x 6 | 7 |
| 286T | 19-3/4 | 18-3/8 | 2 | 14 | 5-1/2 | 5-1/2 | 7 | 8-1/4 | 5/8 | 4-1/2 | 4.6 mm | 1-11/16 | 1/2 x 2 | 5/8 x 6 | 8 |
| 324T | 22-3/4 | 19-1/4 | 2-1/2 | 14 | 6-1/4 | 5-1/4 | 8 | 8-1/2 | 3/4 | 5-1/4 | 4.6 mm | 2-3/16 | 5/8 x 2-1/2 | 3/4 x 9 | 7 |
| 326T | 22-3/4 | 20-3/4 | 2-1/2 | 15-1/2 | 6-1/4 | 6 | 8 | 9-1/4 | 3/4 | 5-1/4 | 4.6 mm | 2-3/16 | 5/8 x 2-1/2 | 3/4 x 9 | 8-1/2 |
| 364T | 25-1/2 | 20-1/2 | 2-1/2 | 15-1/2 | 7 | 5-5/8 | 9 | 9-1/8 | 3/4 | 6 | 5.8 mm | 2-1/16 | 5/8 x 2-1/2 | 3/4 x 9 | 7-3/4 |
| 365T | 25-1/2 | 21-1/2 | 2-1/2 | 16-1/2 | 7 | 6-1/8 | 9 | 9-5/8 | 3/4 | 6 | 5.8 mm | 2-1/16 | 5/8 x 2-1/2 | 3/4 x 9 | 8-3/4 |
| 404T | 28-3/4 | 22-3/8 | 3 | 16-1/2 | 8 | 6-1/8 | 10 | 9-7/8 | 7/8 | 7 | 5.8 mm | 2-1/2 | 3/4 x 3 | 3/4 x 11 | 8-3/4 |
| 405T | 28-3/4 | 23-7/8 | 3 | 18 | 8 | 6-7/8 | 10 | 10-5/8 | 7/8 | 7 | 5.8 mm | 2-1/2 | 3/4 x 3 | 3/4 x 11 | 10-1/4 |
| 444T | 31-1/4 | 24-5/8 | 3 | 19-1/4 | 9 | 7-1/4 | 11 | 11 | 7/8 | 7-1/2 | 5.8 mm | 2-1/2 | 3/4 x 3 | 3/4 x 11 | 11 |
| 445T | 31-1/4 | 26-5/8 | 3 | 21-1/4 | 9 | 8-1/4 | 11 | 12 | 7/8 | 7-1/2 | 5.8 mm | 2-1/2 | 3/4 x 3 | 3/4 x 11 | 13 |
| 447T | 31-1/4 | 30-1/8 | 3 | 24-3/4 | 9 | 10 | 11 | 13-3/4 | 7/8 | 7-1/2 | 8 mm | 3 | 3/4 x 3-1/2 | 3/4 x 11 | 16-1/2 |
| 449T | 31-1/4 | 35-1/8 | 3 | 29-3/4 | 9 | 12-1/2 | 11 | 16-1/4 | 7/8 | 7-1/2 | 8 mm | 3 | 3/4 x 3-1/2 | 3/4 x 11 | 21-1/2 |