

IronHorse® MTCP2 Premium-Efficiency Cast-Iron Three-Phase AC Motors

Premium Efficiency TEFC T-Frame Three-Phase Motor C-Flange Kits – 1 to 300 hp

We stock Premium Efficiency NEMA cast iron T-frame motors from 1–300 hp, and TC-frame motors from 1–30 hp.

We also offer IronHorse cast iron C-flange kits which can be used for C-face mounting of our 1–300 hp IronHorse MTCP2 Premium Efficiency cast iron T-frame motors.

C-faces must be installed by an EASA motor shop in order to maintain the motor warranty.



MTCP2 Premium-Efficiency T-frame Three-Phase Motor C-Flange Kits					
Part Number ⁽¹⁾	Price	Fits Frame	Fits Motor Number	Motor HP	Product Weight (lb) ⁽²⁾
MTAP2-CFACE-140TC	\$17.00	143T & 145T	MTCP2-001-3BD12	1	5.62
			MTCP2-001-3BD18	1	
			MTCP2-1P5-3BD18	1-1/2	
			MTCP2-1P5-3BD36	1-1/2	
			MTCP2-002-3BD18	2	
			MTCP2-002-3BD36	2	
MTAP2-CFACE-180TC	\$24.00	182T & 184T	MTCP2-1P5-3BD12	1-1/2	10.36
			MTCP2-002-3BD12	2	
			MTCP2-003-3BD18	3	
			MTCP2-003-3BD36	3	
			MTCP2-005-3BD18	5	
			MTCP2-005-3BD36	5	
MTAP2-CFACE-210TC	\$33.00	213T & 215T	MTCP2-003-3BD12	3	12.68
			MTCP2-005-3BD12	5	
			MTCP2-7P5-3BD18	7-1/2	
			MTCP2-7P5-3BD36	7-1/2	
			MTCP2-010-3BD18	10	
			MTCP2-010-3BD36	10	
MTAP2-CFACE-250TC	\$56.00	254T & 256T	MTCP2-7P5-3BD12	7-1/2	31.20
			MTCP2-010-3BD12	10	
			MTCP2-015-3BD18	15	
			MTCP2-015-3BD36	15	
			MTCP2-020-3BD18	20	
			MTCP2-020-3BD36	20	
MTAP2-CFACE-280TC	\$71.00	284T & 286T	MTCP2-015-3BD12	15	31.20
			MTCP2-020-3BD12	20	
			MTCP2-025-3BD18	25	
			MTCP2-030-3BD18	30	
MTAP2-CFACE-320TC	\$99.00	324T & 326T	MTCP2-040-3BD18	40	47.40
			MTCP2-050-3BD18	50	
MTAP2-CFACE-360TC	\$141.00	364T & 365T	MTCP2-060-3BD18	60	48.70
			MTCP2-075-3BD18	75	
MTAP2-CFACE-400TC	\$216.00	405T	MTCP2-100-3BD18	100	132.17
MTAP2-CFACE-444TC	\$228.00	444T & 445T	MTCP2-125-3BD18	125	137.44
			MTCP2-150-3BD18	150	
MTAP2-CFACE-447TC	\$228.00	445/7T	MTCP2-200-3BD18	200	134.83
MTAP2-CFACE-449TC	\$493.00	449T	MTCP2-250-3D18	250	162.50
			MTCP2-300-3D18	300	

1) Please review the AutomationDirect Terms & Conditions for warranty and service on this product.

2) Certain heavy and oversized items can be shipped only via LTL. Check our web site for current shipping method constraints by part number.

IronHorse® MTCP2 Premium-Efficiency Cast-Iron Three-Phase AC Motors

Premium Efficiency TEFC Three-Phase Motor Replacement Parts – 1 to 300 hp

We stock MTCP2 Premium Efficiency NEMA cast iron T-frame motors from 1–300 hp, and TC-frame motors from 1–30 hp.

We also offer IronHorse junction boxes, TEFC fans, and TEFC fan shrouds as direct replacement parts for these MTCP2 motors.

These replacement parts are field installable. Instructions included.



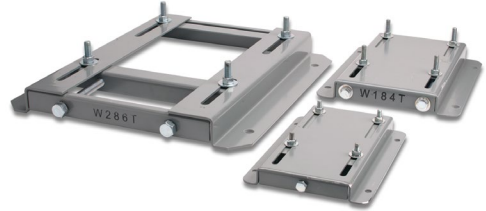
MTCP2 Premium-Efficiency Three-Phase Motor Replacement Parts						
Part Number ⁽¹⁾	Price	Description ⁽²⁾⁽³⁾⁽⁴⁾	Fits Frame	Fits PE Motor Number ⁽¹⁾	Motor HP	Product Wt. (lb)
MTAP2-FAN-140	\$24.00	Replacement Fan	143 & 145	MTCP2-001-3BD12	1	0.029
MTAP2-SHROUD-140	\$20.00	Replacement Fan Shroud		MTCP2-001-3BD18(C)	1	
MTAP2-JBOX-140	\$20.00	Replacement Junction Box	145	MTCP2-1P5-3BD18(C)	1-1/2	1.04
MTAP2-FAN-180	\$24.00	Replacement Fan		MTCP2-1P5-3BD36	1-1/2	
MTAP2-SHROUD-180	\$28.00	Replacement Fan Shroud	182 & 184	MTCP2-002-3BD18(C)	2	2.54
MTAP2-JBOX-180	\$29.00	Replacement Junction Box		MTCP2-002-3BD36	2	
MTAP2-FAN-210-2	\$26.00	Replacement Fan (for 2-pole motors)	213 & 215	MTCP2-1P5-3BD12	1-1/2	0.053
MTAP2-FAN-210	\$25.00	Replacement Fan (4&6-pole)		MTCP2-002-3BD12	2	
MTAP2-SHROUD-210	\$29.00	Replacement Fan Shroud	215	MTCP2-003-3BD18(C)	3	2.23
MTAP2-JBOX-210	\$29.00	Replacement Junction Box		MTCP2-003-3BD36	3	
MTAP2-FAN-250-2	\$42.00	Replacement Fan (for 2-pole motors)	254 & 256	MTCP2-005-3BD18(C)	5	3.28
MTAP2-FAN-250	\$42.00	Replacement Fan (4&6-pole)		MTCP2-005-3BD36	5	
MTAP2-SHROUD-250	\$49.00	Replacement Fan Shroud	256	MTCP2-010-3BD18(C)	7-1/2	0.075
MTAP2-JBOX-250	\$49.00	Replacement Junction Box		MTCP2-010-3BD36	10	
MTAP2-FAN-280	\$58.00	Replacement Fan	284 & 286	MTCP2-003-3BD12	3	0.075
MTAP2-SHROUD-280	\$72.00	Replacement Fan Shroud		MTCP2-005-3BD12	5	
MTAP2-JBOX-280	\$87.00	Replacement Junction Box	286	MTCP2-005-3BD18(C)	7-1/2	4.98
MTAP2-FAN-320	\$80.00	Replacement Fan		MTCP2-010-3BD18(C)	10	
MTAP2-SHROUD-320	\$87.00	Replacement Fan Shroud	324 & 326	MTCP2-015-3BD18(C)	15	8.27
MTAP2-JBOX-320	\$87.00	Replacement Junction Box		MTCP2-015-3BD36	15	
MTAP2-FAN-360	\$131.00	Replacement Fan	364 & 365	MTCP2-020-3BD18(C)	20	8.16
MTAP2-SHROUD-360	\$135.00	Replacement Fan Shroud		MTCP2-020-3BD36	20	
MTAP2-JBOX-360	\$164.00	Replacement Junction Box	365	MTCP2-030-3BD18(C)	30	8.16
MTAP2-FAN-400	\$153.00	Replacement Fan		MTCP2-040-3BD18(C)	40	
MTAP2-SHROUD-400	\$164.00	Replacement Fan Shroud	405	MTCP2-050-3BD18(C)	50	23.59
MTAP2-JBOX-400	\$164.00	Replacement Junction Box		MTCP2-060-3BD18(C)	60	
MTAP2-FAN-440	\$168.00	Replacement Fan	444 & 445	MTCP2-075-3BD18(C)	75	21.05
MTAP2-SHROUD-440	\$183.00	Replacement Fan Shroud		MTCP2-075-3BD36	75	
MTAP2-JBOX-440	\$183.00	Replacement Junction Box	447	MTCP2-100-3BD18(C)	100	32.74
MTAP2-FAN-449	\$247.00	Replacement Fan		MTCP2-125-3BD18	125	
MTAP2-FAN-449-1	\$244.00	Replacement Fan	449	MTCP2-150-3BD18	150	17.97
MTAP2-JBOX-449	\$326.00	Replacement Junction Box		MTCP2-200-3BD18	200	
MTAP2-SHROUD-449	\$342.00	Replacement Fan Shroud	449	MTCP2-250-3D18	250	0.205
MTAP2-FAN-449	\$247.00	Replacement Fan		MTCP2-300-3D18	300	
MTAP2-FAN-449-1	\$244.00	Replacement Fan	449	MTCP2-250-3D18	250	22.27
MTAP2-JBOX-449	\$326.00	Replacement Junction Box		MTCP2-300-3D18	300	
MTAP2-SHROUD-449	\$342.00	Replacement Fan Shroud	449	MTCP2-250-3D18	250	36.49
MTAP2-FAN-449	\$247.00	Replacement Fan		MTCP2-300-3D18	300	

1) These MTAP2 replacement components fit only MTCP2 Premium Efficiency motors.
 2) Replacement Fans include fan and snap ring.
 3) Replacement Fan Shrouds include shroud, bolts w/washers, and rubber plug.
 4) Replacement Junction Boxes include gasketed base & cover assembly, base gasket, and base bolts.

STABLE™ Motor Slide Bases

Mounting Slide Bases for 56 to 449T NEMA Motors Features

- Allows adjustment of motor mounting position
- Slide direction is perpendicular to motor shaft
- Double adjusting screws for frames 182T-449T
- Manufactured to precise dimensional standards
- Dimensionally interchangeable with existing major makes
- Heavy-duty steel construction
- Painted with oven-baked primer for better adhesion of customer's paint
- All "D" bolts (motor mounting bolts) are fixed to the exact motor foot pattern
- All "D" bolts are welded into position to prevent spinning and dropping from slots
- Nuts and washers are provided for securing the motor to the slide base



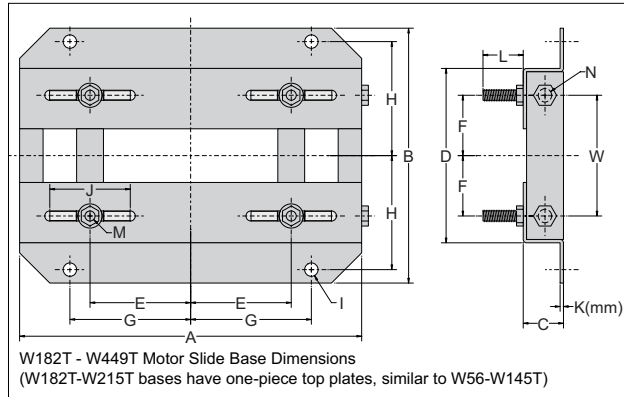
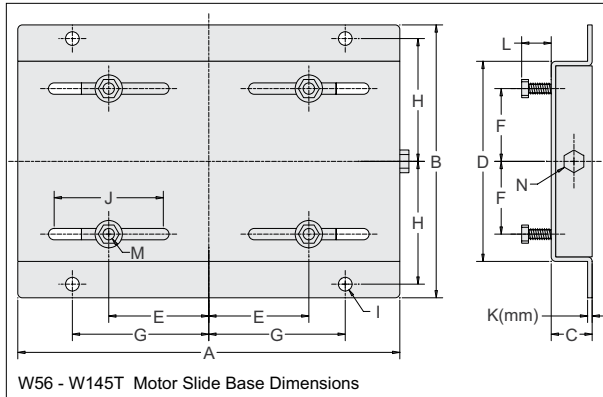
STABLE Motor Slide Bases												
Part Number	Price	Fits Frame Type	Product Weight (lb)	Fits Motor								
				IronHorse	Marathon							
					micro-MAX	MAX+	Black Max 230/460V	Black Max 575V	Blue Max	NEMA Premium XRI	Blue Chip XRI 230/460V	Blue Chip XRI 575V
MTA-BASE-W56*	\$10.00	56*	2.8	MTPM-P3x-1x18 MTPM-P5x-1x18 MTPM-P7x-1x18 MTPM-0xx-1x18 MTPM-1xx-1x18 MTR(2)(P)-xxx-xxxx*	Y500 Y502 Y360 Y362 Y364	Y280 Y281 Y282	Y592(-A772) Y534(-A772) Y535(-A772)	Y555(-A772) Y556(-A772)	-	E2000	-	-
MTA-BASE-W143T	\$18.50	143T/TC	4.6	MTCP-001-3BD18(C)(CK) MTCP-1P5-3BD36	-	-	Y536(-A772)	-	-	E2001A E2003	-	-
MTA-BASE-W145T	\$18.50	145T/TC	5.1	MTCP-001-3BD12 MTCP-1P5-3BD18(C)(CK) MTCP-002-3BD18(C)(CK) MTCP-002-3BD36	Y366 Y368	Y284 Y285	Y537(-A772) Y538(-A772) Y551(-A772)	Y557(-A772)	-	E2002 E2004A E2006 E2007A	-	-
MTA-BASE-W182T	\$24.50	182T/TC	9.2	MTCP-1P5-3BD12 MTCP-003-3BD18(C)(CK) MTCP-003-3BD36 MTF-002-1C18-182	Y1999	Y286A	Y541A(-A772)	Y558A(-A772)	-	E2005 E2009 E2010	-	-
MTA-BASE-W184T	\$24.50	184T/TC	10	MTCP-002-3BD12 MTCP-005-3BD18(C)(CK) MTCP-005-3BD36 MTF-00x-1C18	Y1372	Y287A	Y540(-A772) Y543A(-A772)	Y559A(-A772)	-	E2008 E2012 E2013	-	-
MTA-BASE-W213T	\$35.50	213T/TC	13	MTCP-003-3BD12 MTCP-7P5-3BD18(C)(CK) MTCP-7P5-3BD36	Y994	-	Y542(-A772) Y545(-A772)	Y560(-A772)	-	E2011 E2015 E2016A	-	-
MTA-BASE-W215T	\$35.50	215T/TC	15	MTCP-005-3BD12 MTCP-010-3BD18(C)(CK) MTCP-010-3BD36	Y996	-	Y544(-A772) Y547(-A772)	Y561(-A772)	-	E2014 E2018 E2019A	-	-
MTA-BASE-W254T	\$49.50	254T/TC	18	MTCP-7P5-3BD12 MTCP-015-3BD18(C)(CK) MTCP-015-3BD36	-	-	Y546(-A772) Y549(-A772)	Y562(-A772)	-	-	E205	E307
MTA-BASE-W256T	\$49.50	256T/TC	19	MTCP-010-3BD12 MTCP-020-3BD18(C)(CK) MTCP-20-3BD36	-	-	Y548(-A772) Y552(-A772)	Y563(-A772)	-	-	E206	E308
MTA-BASE-W284T	\$54.00	284T/TC	20	MTCP-015-3BD12 MTCP-025-3BD18(C)(CK)	-	-	Y553(-A772)	-	-	-	E207	E309
MTA-BASE-W286T	\$54.00	286T/TC	21	MTCP-20-3BD12 MTCP-030-3BD18(C)(CK)	-	-	Y393(-A772)	-	-	-	E208	E310
MTA-BASE-W324T	\$82.00	324T/TC	30	MTCP-040-3BD18(C)(CK)	-	-	-	-	Y571(-A774) Y513(-A775)	-	E209	E311
MTA-BASE-W326T	\$82.00	326T/TC	31	MTCP-050-3BD18(C)(CK)	-	-	-	-	Y572(-A774) Y514(-A775)	-	E210	E312
MTA-BASE-W364T	\$112.00	364T/TC	43	MTCP-060-3BD18(C)(CK)	-	-	-	-	Y573(-A774) Y515(-A775)	-	E211	E313
MTA-BASE-W365T	\$112.00	365T/TC	43	MTCP-075-3BD18(C)(CK)	-	-	-	-	Y574(-A774) Y516(-A775)	-	E212	E315
MTA-BASE-W404T	\$138.00	404T/TC	58	-	-	-	-	-	-	-	-	-
MTA-BASE-W405T	\$138.00	405T/TC	60	MTCP-100-3BD18(C)(CK)	-	-	-	-	Y575(-A774) Y517(-A775)	-	E213	E314
MTA-BASE-W444T	\$159.00	444T	63	MTCP-125-3BD18	-	-	-	-	-	-	-	-
MTA-BASE-W445T	\$159.00	445T	65	MTCP-150-3BD18	-	-	-	-	-	-	-	-
MTA-BASE-W447T	\$210.00	447T	89	MTCP-200-3BD18	-	-	-	-	-	-	-	-
MTA-BASE-W449T	\$210.00	449T	94	MTC-250-3D18** MTC-300-3D18**	-	-	-	-	-	-	-	-

* IronHorse MTR2 56HC motors have double-punched bases to fit on slide base MTA-BASE-W56.

** Motors MTC-250-3D18 and MTC-300-3D18 are obsolete, and no longer available.

STABLE Motor Slide Bases

Dimensions – Mounting Slide Bases for NEMA Motors



Dimensions [inches, except as noted] - STABLE Motor Slide Bases															
MTA-BASE-Wxxxx	A	B	C	D	E	F	G	H	I	J	K(mm)	L	M	N	W
56	10-5/8	6-1/2	1-1/8	4-1/2	2-7/16	1-1/2	3-13/16	2-7/8	3/8	3	2 mm	7/8	5/16 x 1	3/8 x 4	n/a
143T	10-1/2	7-1/2	1-1/8	5-1/2	2-3/4	2	3-3/4	3-3/8	3/8	3	3 mm	13/16	5/16 x 1	3/8 x 4	n/a
145T	10-1/2	8-1/2	1-1/8	6-1/2	2-3/4	2-1/2	3-3/4	3-7/8	3/8	3	3 mm	13/16	5/16 x 1	3/8 x 4	n/a
182T	12-3/4	9-1/2	1-1/2	6-1/2	3-3/4	2-1/4	4-1/2	4-1/4	1/2	3	3.5 mm	1-1/2	3/8 x 1-3/4	1/2 x 6	4-1/2
184T	12-3/4	10-1/2	1-1/2	7-1/2	3-3/4	2-3/4	4-1/2	4-3/4	1/2	3	3.5 mm	1-1/2	3/8 x 1-3/4	1/2 x 6	5-1/2
213T	15	11	1-3/4	7-1/2	4-1/4	2-3/4	5-1/4	4-3/4	1/2	3-1/2	3.8 mm	1-1/2	3/8 x 1-3/4	1/2 x 6	5-1/2
215T	15	12-1/2	1-3/4	9	4-1/4	3-1/2	5-1/4	5-1/2	1/2	3-1/2	3.8 mm	1-1/2	3/8 x 1-3/4	1/2 x 6	7
254T	17-3/4	15-1/8	2	10-3/4	5	4-1/8	6-1/4	6-5/8	5/8	4	4.6 mm	1-7/16	1/2 x 1-3/4	5/8 x 6	5-5/16
256T	17-3/4	16-7/8	2	12-1/2	5	5	6-1/4	7-1/2	5/8	4	4.6 mm	1-7/16	1/2 x 1-3/4	5/8 x 6	7
284T	19-3/4	16-7/8	2	12-1/2	5-1/2	4-3/4	7	7-1/2	5/8	4-1/2	4.6 mm	1-11/16	1/2 x 2	5/8 x 6	7
286T	19-3/4	18-3/8	2	14	5-1/2	5-1/2	7	8-1/4	5/8	4-1/2	4.6 mm	1-11/16	1/2 x 2	5/8 x 6	8
324T	22-3/4	19-1/4	2-1/2	14	6-1/4	5-1/4	8	8-1/2	3/4	5-1/4	4.6 mm	2-3/16	5/8 x 2-1/2	3/4 x 9	7
326T	22-3/4	20-3/4	2-1/2	15-1/2	6-1/4	6	8	9-1/4	3/4	5-1/4	4.6 mm	2-3/16	5/8 x 2-1/2	3/4 x 9	8-1/2
364T	25-1/2	20-1/2	2-1/2	15-1/2	7	5-5/8	9	9-1/8	3/4	6	5.8 mm	2-1/16	5/8 x 2-1/2	3/4 x 9	7-3/4
365T	25-1/2	21-1/2	2-1/2	16-1/2	7	6-1/8	9	9-5/8	3/4	6	5.8 mm	2-1/16	5/8 x 2-1/2	3/4 x 9	8-3/4
404T	28-3/4	22-3/8	3	16-1/2	8	6-1/8	10	9-7/8	7/8	7	5.8 mm	2-1/2	3/4 x 3	3/4 x 11	8-3/4
405T	28-3/4	23-7/8	3	18	8	6-7/8	10	10-5/8	7/8	7	5.8 mm	2-1/2	3/4 x 3	3/4 x 11	10-1/4
444T	31-1/4	24-5/8	3	19-1/4	9	7-1/4	11	11	7/8	7-1/2	5.8 mm	2-1/2	3/4 x 3	3/4 x 11	11
445T	31-1/4	26-5/8	3	21-1/4	9	8-1/4	11	12	7/8	7-1/2	5.8 mm	2-1/2	3/4 x 3	3/4 x 11	13
447T	31-1/4	30-1/8	3	24-3/4	9	10	11	13-3/4	7/8	7-1/2	8 mm	3	3/4 x 3-1/2	3/4 x 11	16-1/2
449T	31-1/4	35-1/8	3	29-3/4	9	12-1/2	11	16-1/4	7/8	7-1/2	8 mm	3	3/4 x 3-1/2	3/4 x 11	21-1/2