

# IronHorse AC Motor Accessories

## T Frame TEFC Motors – Three-phase Industrial Duty – 1 to 300 hp – C-Flange Kits

We stock 1800 rpm NEMA cast iron T-frame motors from 1–300hp, and TC-frame motors from 1–100hp.

We also offer IronHorse cast iron C-flange kits which can be used for C-face mounting of our IronHorse cast iron T-frame motors. The kits are field installable and include the C-faces and bolts.

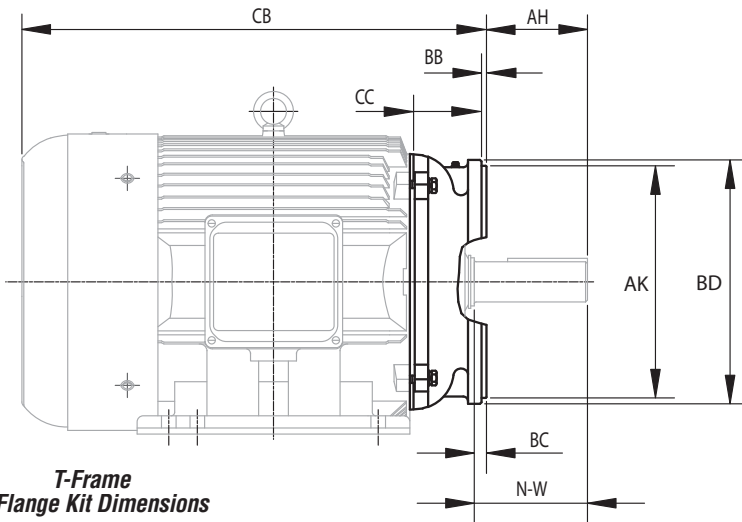


Three-phase T-frame Motor C-flange Kits					
Part Number	Price	Fits Frame	Fits Motor Number	Motor HP	Shipping Weight (lb)
<b>MTA-CFACE-140TC</b>	<--->	143T & 145T	MTC-001-3BD12	1	6.0
			MTC-001-3BD18	1	
			MTC-1P5-3BD18	1-1/2	
			MTC-1P5-3BD36	1-1/2	
			MTC-002-3BD18	2	
			MTC-002-3BD36	2	
<b>MTA-CFACE-180TC</b>	<--->	182T & 184T	MTC-1P5-3BD12	1-1/2	12
			MTC-002-3BD12	2	
			MTC-003-3BD18	3	
			MTC-003-3BD36	3	
			MTC-003-3BD36	5	
			MTC-005-3BD36	5	
<b>MTA-CFACE-210TC</b>	<--->	213T & 215T	MTC-003-3BD12	3	12
			MTC-005-3BD12	5	
			MTC-7P5-3BD18	7-1/2	
			MTC-7P5-3BD36	7-1/2	
			MTC-010-3BD18	10	
			MTC-010-3BD36	10	
<b>MTA-CFACE-250TC</b>	<--->	254T & 256T	MTC-7P5-3BD12	7-1/2	32
			MTC-010-3BD12	10	
			MTC-015-3BD18	15	
			MTC-020-3BD18	20	
<b>MTA-CFACE-280TC</b>	<--->	284T & 286T	MTC-025-3BD18	25	38
			MTC-030-3BD18	30	
<b>MTA-CFACE-320TC</b>	<--->	324T & 326T	MTC-040-3BD18	40	60
			MTC-050-3BD18	50	
<b>MTA-CFACE-360TC</b>	<--->	364T & 365T	MTC-060-3BD18	60	62
			MTC-075-3BD18	75	
<b>MTA-CFACE-400TC<sup>(1)</sup></b>	<--->	405T	MTC-100-3BD18	100	144 <sup>(1)</sup>
<b>MTA-CFACE-444TC<sup>(1)</sup></b>	<--->	444T & 445T	MTC-125-3BD18	125	156 <sup>(1)</sup>
			MTC-150-3BD18	150	
<b>MTA-CFACE-447TC<sup>(1)</sup></b>	<--->	445/7T	MTC-200-3BD18	200	154 <sup>(1)</sup>
<b>MTA-CFACE-449TC<sup>(1)</sup></b>	<--->	449T	MTC-250-3D18	250	168 <sup>(1)</sup>
			MTC-300-3D18	300	

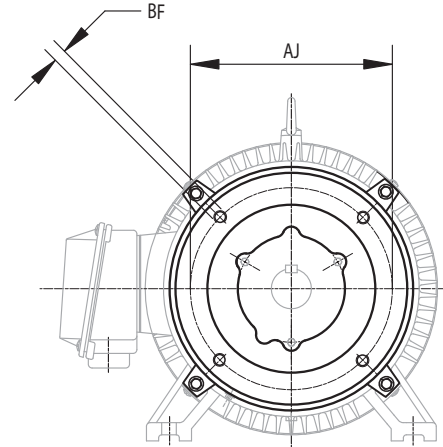
1) For components weighing over 100 lbs: A) LTL shipment required. B) Order before 5:00 p.m. EST for same day shipment. C) You must have a receiving loading dock. D) Not available in Hawaii or Puerto Rico.

# IronHorse AC Motor Accessories

## T Frame TEFC Motors – Three-phase Industrial Duty – 1 to 300 hp – C-Flange Kit and TC-Frame Motor Dimensions



**T-Frame  
C-Flange Kit Dimensions**



**NOTE:**

MOTOR HOUSING DIMENSIONS FOR TC FRAME MOTORS (MTC-xxx-xxxxCK) ARE SHOWN ON THE PREVIOUS PAGE WITH T-FRAME MOTOR DIMENSIONS. TC-FRAME MOTORS ARE T-FRAME MOTORS WITH C-FLANGE ACCESSORY KITS INSTALLED.



Dimensions [inches] - T-Frame Motor C-Flange Kits											
Part Number	Frame Type	AH <sup>(2)</sup>	AJ	AK	BB	BC <sup>(2)</sup>	BD	BF	CB <sup>(2)</sup>	CC	N-W <sup>(2)</sup>
<b>MTA-CFACE-140TC<sup>(1)</sup></b>	143T / 145T	1.96	5.875 <sup>(1)</sup>	4.5 <sup>(1)</sup>	0.16	0.12	6.5	3/8-16	10.61 / 11.62	1.43	2.25
<b>MTA-CFACE-180TC</b>	182T / 184T	2.62	7.25	8.5	0.25	0.12	9	1/2-13	12.49 / 13.49	1.17	2.75
<b>MTA-CFACE-210TC</b>	213T / 215T	3.12	7.25	8.5	0.25	0.25	9	1/2-13	15.77 / 17.37	1.45	3.38
<b>MTA-CFACE-250TC</b>	254T / 256T	3.75	7.25	8.5	0.25	0.25	10	1/2-13	19.54 / 21.31	2.89	4
<b>MTA-CFACE-280TC</b>	284T / 286T	4.38	9	10.5	0.25	0.25	11.25	1/2-13	22.26 / 23.80	3.26	4.62
<b>MTA-CFACE-320TC</b>	324T / 326T	5	11	12.5	0.25	0.25	14	5/8-11	24.95 / 26.24	3.67	5.25
<b>MTA-CFACE-360TC</b>	364T / 365T	5.62	11	12.5	0.25	0.25	14	5/8-11	27.06 / 28.49	4.06	5.88
<b>MTA-CFACE-400TC</b>	405T	7	11	12.5	0.25	0.25	15.5	5/8-11	31.35	4.33	7.25
<b>MTA-CFACE-444TC</b>	444T / 445T	8.25	14	16	0.25	0.25	18	5/8-11	34.27 / 36.25	4.11	8.5
<b>MTA-CFACE-447TC</b>	445/7T	8.25	14	16	0.25	0.25	18	5/8-11	39.78	4.11	8.5
<b>MTA-CFACE-449TC</b>	449T	8.248	14	16	0.26	0.26	17.72	5/8-11	47.26	4.35	8.5

(1) Mounting bolt holes for MTA-CFACE-140TC are located outside of the highest C-face flange surface (dimension AJ > AK).  
(2) Motor dependent dimensions apply only to IronHorse MTC-xxx-xxxx(CK) motors.