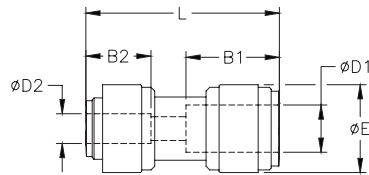


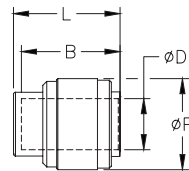
# HydroMode™ Potable Water Push-to-Connect Fittings

HydroMode push-to-connect union straight reducer fitting with acetel body and synthetic rubber o-ring. For use with polyethylene and other flexible tubing. Five fittings per package.



HydroMode™ Union Straight Reducer										
Inch Sizes - dimensions in millimeters (mm) unless otherwise noted										
Part No.	Price	Size (inch)	ØD1 (inch)	ØD2 (inch)	B1	B2	ØE	L	Package Weight (lbs)	Qty. per pack
UR516-14-P	\$5.75	5/16 in. x 1/4 in.	5/16	1/4	17.5	16.9	17.6	36.8	0.1	5
UR38-14-P	\$7.25	3/8 in. x 1/4 in.	3/8	1/4	20.2	16.9	20.0	42.1	0.1	5
UR38-516-P	\$6.25	3/8 in. x 5/16 in.	3/8	5/16	20.2	17.5	20.0	42.5	0.1	5
UR12-516-P	\$7.50	1/2 in. x 5/16 in.	1/2	5/16	25.1	17.5	23.6	52.0	0.2	5
UR12-38-P	\$7.75	1/2 in. x 3/8 in.	1/2	3/8	25.1	25.1	23.6	52.4	0.2	5

HydroMode push-to-connect union cap fitting with acetel body and synthetic rubber o-ring. For use with polyethylene and other flexible tubing. Five fittings per package.



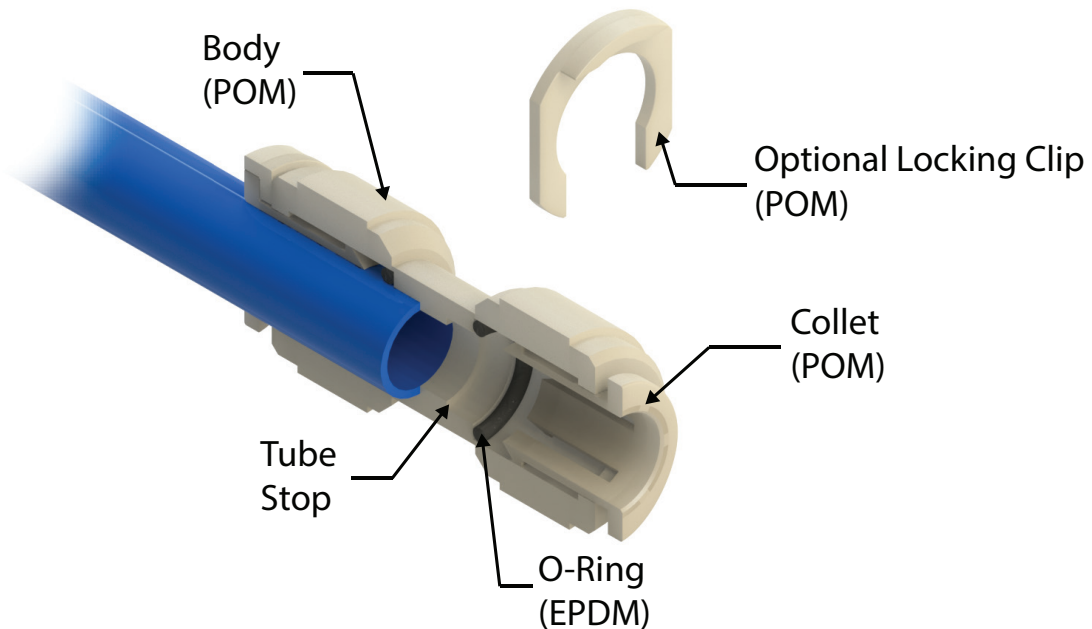
HydroMode™ Union Cap								
Inch Sizes - dimensions in millimeters (mm) unless otherwise noted								
Part No.	Price	Size (inch)	ØD (inch)	ØP	B	L	Package Weight (lbs)	Qty. per pack
UC14-P	\$5.50	1/4 in.	1/4	15.5	16.9	18.9	0.1	5
UC516-P	\$5.50	5/16 in.	5/16	17.6	17.5	19.5	0.1	5
UC38-P	\$5.75	3/8 in.	3/8	20.0	20.2	22.2	0.1	5
UC12-P	\$6.00	1/2 in.	1/2	23.0	24.9	26.9	0.1	5

# HydroMode™ Potable Water Push-to-Connect Fittings

HydroMode push-to-connect fittings are designed to work with potable water and beverages. Installing or removing flexible tubing is quick and easy. All fittings are made of NSF approved materials with NSF-51® and NSF-61® certifications. The body and collet of the fittings are made from polyoxymethylene (POM) also known as acetal, while the o-rings are made from ethylene propylene diene monomer (EPDM) which is a type of synthetic rubber.

## Features

- Designed for potable water and beverages
- NSF-51 and NSF-61 certified
- Easy tubing installation and removal
- Optional retaining clips prevent accidental tube removal
- Fittings rated for up to 145psi at 70°C (158°F)



*Push-to-Connect Fitting  
Cut-away Diagram*