

# Fiberglass Enclosures – Slim Line Series

## Junction Box with Crowned Screw Cover



**HW-N4X1144**

### Construction

- Hot compression molded fiberglass reinforced polyester (thermoset)
- Poured polyurethane seamless gasket provides watertight dust-tight environmental seal
- UV resistant
- Workable material cuts, drills, punches and saws with ease and accuracy
- Four recessed captive stainless steel screws [HW-N4X1732 has six]
- Optional mounting feet available for HW-N4X644, HW-N4X844, and HW-N4X1144 only
- Rounded edges, minimal protrusions or exposed pocket areas for accumulation of dust or debris
- Non-corrosive in chemical exposure
- Submersible, non-corrosive environmental design
- High impact resistance - 216 in/lb per UL746C
- Non-conductive double insulated material
- Smooth surface, no color variations, swirls or color pockets, no voids
- Color: Gray

### Listings

- UL/cUL 50/508, Types 1, 3R, 4X, 6P, 12 [UL File E64791]
- CSA Certified, Types 1, 3R, 4x, 6P, 12 [CSA File 222873]
- NEMA Standard 250. Types 1, 3R, 4x, 6P, 12
- Temperature Range: -76°F to 274°F [-60°C to 134°C]
- Flammability Rating: UL94-5V
- Non-flame propagating
- Flame Spread classification per NFPA No. 101: Class A [1]

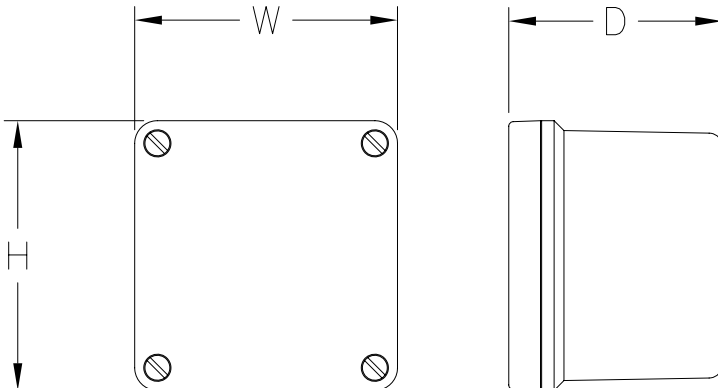


Enclosure Shipping Schedule	
Same day	1 -10 days
Color indicates shipping lead time in business days.	

Slim Line Series Fiberglass Enclosures - Junction Box with Crowned Screw Cover			
Part Number	Price	Enclosure Overall Size HxWxD	Wt. [lb]
HW-N4X332*	\$28.50	3.72 x 3.63 x 2.95 [95 x 92 x 75]	0.8
HW-N4X532	\$29.50	5.97 x 3.63 x 3.14 [152 x 92 x 80]	1.0
HW-N4X644	\$31.00	6.63 x 3.81 x 3.89 [168 x 97 x 99]	1.3
HW-N4X832	\$32.00	8.41 x 3.63 x 3.14 [214 x 92 x 80]	1.4
HW-N4X844	\$33.50	8.88 x 3.81 x 3.89 [225 x 97 x 99]	1.6
HW-N4X932	\$35.50	9.35 x 3.63 x 3.14 [237 x 92 x 80]	1.3
HW-N4X1144	\$38.00	11.13 x 3.81 x 3.89 [283 x 97 x 99]	1.9
HW-N4X1432	\$40.50	13.78 x 3.63 x 3.14 [350 x 92 x 80]	1.9
HW-N4X1732**	\$59.00	17.35 x 3.63 x 3.14 [441 x 92 x 80]	2.4

**Notes:** No subpanel available for these enclosures.  
 Dimensions in inches [millimeters].  
 Mounting foot kit [HW-N4XMTGFTKIT] must be ordered separately.  
 \*HW-N4X332 has flat cover.  
 \*\* HW-N4X1732 has six captive cover screws that can affect usable interior space. Drawings shown below do not reflect center screw set.

### Dimensions



See our website: [www.AutomationDirect.com](http://www.AutomationDirect.com) for complete engineering drawings.

# Fiberglass Enclosures – Slim Line Series

## Junction Box with Screw Cover



**HW-N4X763SC**

### Construction

- Hot compression molded fiberglass reinforced polyester (thermoset)
- Poured polyurethane seamless gasket provides watertight dust-tight environmental seal
- UV resistant
- Workable material cuts, drills, punches and saws with ease and accuracy
- Four captive stainless steel screws
- Optional mounting feet available
- Raised bosses with brass inserts accepting 10-32 screws for optional panel mounting
- Rounded edges, minimal protrusions or exposed pocket areas for accumulation of dust or debris
- Non-corrosive in chemical exposure
- Submersible, non-corrosive environmental design
- High impact resistance - 216 in/lb per UL746C
- Lift-off cover with four cover screws
- Smooth surface, no color variations, swirls or color pockets, no voids
- Optional carbon steel back panel available
- Color: Gray

### Listings

- UL/cUL 50/508, Types 1, 3R, 4X, 6P, 12 [UL File E64791]
- CSA Certified, Types 1, 3R, 4X 6P, 12 [CSA File 222873]
- NEMA Standard 250, Types 1, 3R, 4X, 6P, 12
- Temperature Range: -76°F to 274°F [-60°C to 134°C]
- Flammability Rating: UL94-5V
- Non-flame propagating
- Flame Spread classification per NFPA No. 101: Class A [1]



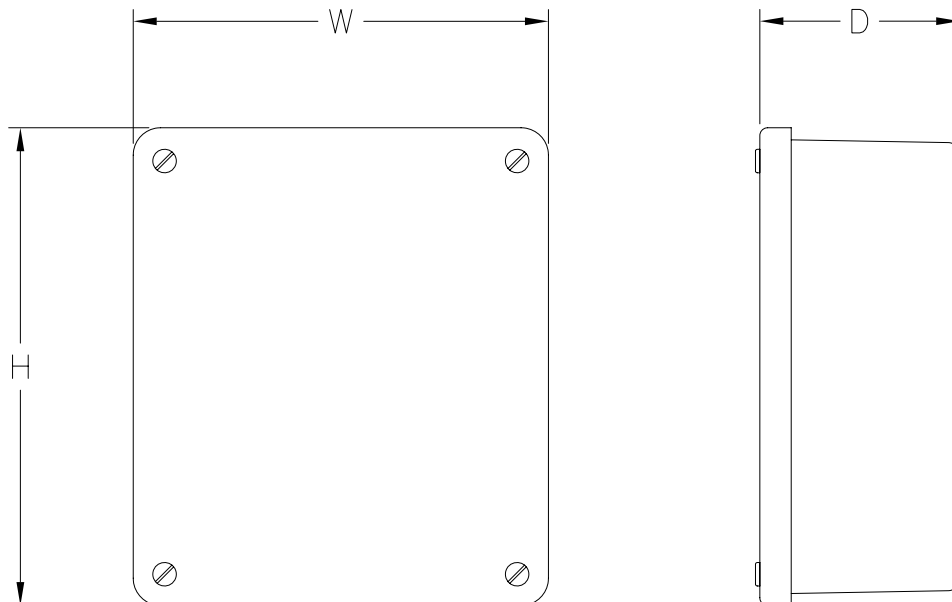
Slim Line Series Fiberglass Enclosures - Junction Box with Screw Cover				
Part Number	Price	Enclosure Overall Size HxWxD	Wt. [lb]	Carbon Steel Subpanel
<b>HW-N4X763SC</b>	\$40.50	7.63 x 6.63 x 3.19 [194 x 168 x 81]	2.3	<b>HW-MP706CS</b>
<b>HW-N4X963SC</b>	\$46.50	9.87 x 6.63 x 3.19 [251 x 168 x 81]	2.2	<b>HW-MP906CS</b>

*Notes: Subpanels must be ordered separately. Dimensions in inches [millimeters].*

Enclosure Shipping Schedule	
Same day	1 -10 days

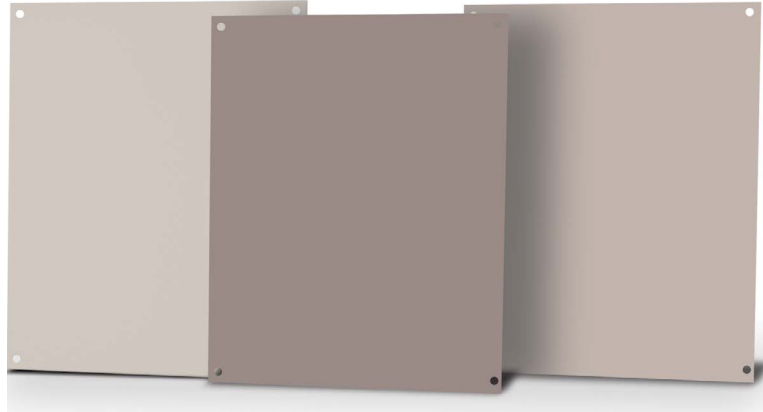
Color indicates shipping lead time in business days.

### Dimensions



See our website: [www.AutomationDirect.com](http://www.AutomationDirect.com) for complete engineering drawings.

# Subpanels for Premier, JIC and Classic Series Fiberglass Enclosures



Subpanel Specifications		
Subpanel	Material	Color/Finish
Carbon Steel	Carbon Steel	White polyester powder Finish
Aluminum	3003H14 Aluminum	Mill Finish
Stainless Steel	304 Stainless	Mill Finish
Fiberglass	FRP (Fiberglass reinforced panel)	Gray



## Carbon steel subpanels

## Fiberglass subpanels

Subpanel Part Number	Price	Subpanel Size HxWxD	Enclosure Nominal Size HxW	Wt (lb)
HW-MP604CS	\$5.75	4.88 x 2.88 x 0.075 [124 x 73 x .19]	6 x 4	0.3
HW-MP606CS	\$5.75	4.88 x 4.88 x 0.075 [124 x 124 x .19]	6 x 6	0.5
HW-MP706CS	\$7.50	6.00 x 4.88 x 0.075 [152 x 124 x .19]	7 x 6	0.6
HW-MP806CS	\$7.75	6.75 x 4.88 x 0.075 [152 x 124 x .19]	8 x 6	0.8
HW-MP808CS	\$10.00	6.88 x 6.88 x 0.075 [175 x 175 x .19]	8 x 8	0.8
HW-MP906CS	\$9.50	8.25 x 4.88 x 0.075 [175 x 124 x .19]	9 x 6	0.9
HW-MP1008CS	\$11.50	8.75 x 6.88 x 0.075 [225 x 175 x .19]	10 x 8	1.3
HW-MP1210CS	\$14.00	10.88 x 8.75 x 0.075 [276 x 225 x .19]	12 x 10	2.1
HW-MP1412CS	\$15.50	12.88 x 10.88 x 0.075 [327 x 276 x .19]	14 x 12	3.0
HW-MP1614CS	\$20.50	14.88 x 12.88 x 0.075 [378 x 327 x .19]	16 x 14	4.1
HW-MP1816CS	\$26.50	16.88 x 14.88 x 0.075 [429 x 378 x .19]	18 x 16	5.4
HW-MP2016CS	\$33.50	18.88 x 14.88 x 0.075 [479 x 378 x .19]	20 x 16	6.1
HW-MP2020CS	\$98.00	18.00 x 18.00 x 0.105 [457 x 457 x 2.7]	20 x 20	9.4
HW-MP2420CS	\$119.00	22.00 x 18.00 x 0.105 [558 x 457 x 2.7]	24 x 20	11
HW-MP2424CS	\$146.00	22.00 x 22.00 x 0.105 [558 x 558 x 2.7]	24 x 24	22

Note: Dimensions in inches [millimeters].

Subpanel Part Number	Price	Subpanel Size HxWxD	Enclosure Nominal Size HxW	Wt. (lb)
HW-MP604FG	\$5.75	4.88 x 2.88 x 0.13 [124 x 73 x 3.2]	6 x 4	0.1
HW-MP606FG	\$5.75	4.88 x 4.88 x 0.13 [124 x 124 x 3.2]	6 x 6	0.2
HW-MP806FG	\$7.75	6.88 x 4.88 x 0.13 [175 x 124 x 3.2]	8 x 6	0.3
HW-MP808FG	\$10.00	6.88 x 6.88 x 0.13 [175 x 175 x 3.2]	8 x 8	0.3
HW-MP1008FG	\$9.50	8.88 x 6.88 x 0.13 [225 x 175 x 3.2]	10 x 8	0.5
HW-MP1210FG	\$13.50	10.88 x 8.88 x 0.13 [276 x 225 x 3.2]	12 x 10	0.9
HW-MP1412FG	\$17.00	12.88 x 10.88 x 0.13 [327 x 276 x 3.2]	14 x 12	1.0
HW-MP1614FG	\$21.00	14.88 x 12.88 x 0.13 [378 x 327 x 3.2]	16 x 14	0.8
HW-MP1816FG	\$27.00	16.88 x 14.88 x 0.13 [429 x 378 x 3.2]	18 x 16	2.0
HW-MP2016FG	\$33.00	18.88 x 14.88 x 0.13 [479 x 378 x 3.2]	20 x 16	2.2
HW-MP2020FG	\$106.00	18.00 x 18.00 x 0.13 [457 x 457 x 3.2]	20 x 20	2.3
HW-MP2420FG	\$128.00	22.00 x 18.00 x 0.13 [558 x 457 x 3.2]	24 x 20	2.8
HW-MP2424FG	\$157.00	22.00 x 22.00 x 0.13 [558 x 558 x 3.2]	24 x 24	3.5

Note: Dimensions in inches [millimeters].

Enclosure Shipping Schedule			
Same day	1-7 days	1 - 10 days	1-15 days

Color indicates shipping lead time in business days.

# Subpanels for Premier, JIC and Classic Series Fiberglass Enclosures

## Stainless steel subpanels

Subpanel Part Number	Price	Subpanel Size HxWxD	Enclosure Nominal Size HxW	Wt. (lb)
<b>HW-MP604SS</b>	\$7.75	4.88 x 2.88 x 0.064 [124 x 73 x 1.5]	6 x 4	0.3
<b>HW-MP606SS</b>	\$9.75	4.88 x 4.88 x 0.064 [124 x 124 x 1.5]	6 x 6	0.5
<b>HW-MP806SS</b>	\$12.50	6.88 x 4.88 x 0.064 [175 x 124 x 1.5]	8 x 6	0.8
<b>HW-MP808SS</b>	\$15.50	6.88 x 6.88 x 0.064 [175 x 175 x 1.5]	8 x 8	0.8
<b>HW-MP1008SS</b>	\$21.00	8.88 x 6.88 x 0.064 [225 x 175 x 1.5]	10 x 8	1.2
<b>HW-MP1210SS</b>	\$31.50	10.88 x 8.88 x 0.064 [276 x 225 x 1.5]	12 x 10	1.9
<b>HW-MP1412SS</b>	\$46.50	12.88 x 10.88 x 0.064 [327 x 276 x 1.5]	14 x 12	2.9
<b>HW-MP1614SS</b>	\$56.00	14.88 x 12.88 x 0.064 [378 x 327 x 1.5]	16 x 14	3.1
<b>HW-MP1816SS</b>	\$65.00	16.88 x 14.88 x 0.064 [429 x 378 x 1.5]	18 x 16	6.0
<b>HW-MP2016SS</b>	\$77.00	18.88 x 14.88 x 0.064 [479 x 378 x 1.5]	20 x 16	6.1

**Note: Dimensions in inches [millimeters].**



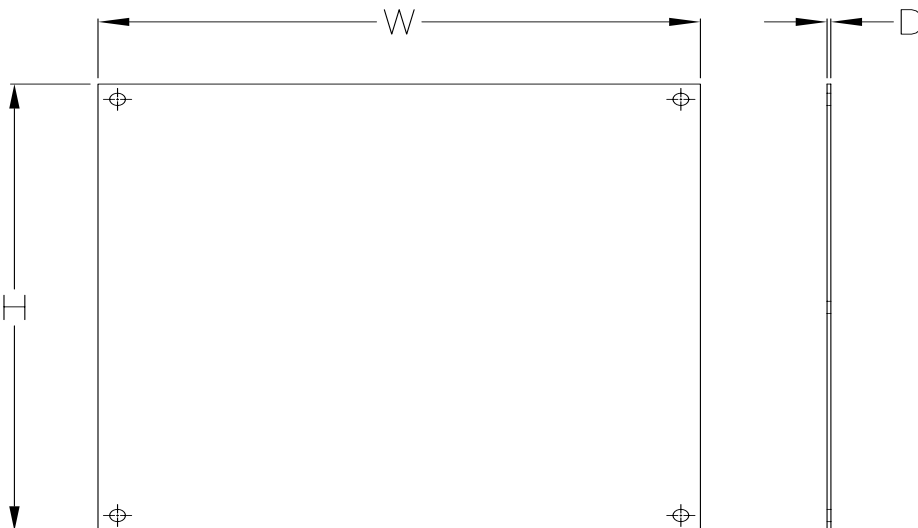
## Aluminum subpanels

Subpanel Part Number	Price	Subpanel Size HxWxD	Enclosure Nominal Size HxW	Wt. (lb)
<b>HW-MP604A</b>	\$5.75	4.88 x 2.88 x 0.081 [124 x 73 x 2.0]	6 x 4	0.1
<b>HW-MP606A</b>	\$5.75	4.88 x 4.88 x 0.081 [124 x 124 x 2.0]	6 x 6	0.2
<b>HW-MP806A</b>	\$7.75	6.88 x 4.88 x 0.081 [175 x 124 x 2.0]	8 x 6	0.3
<b>HW-MP1008A</b>	\$11.50	8.88 x 6.88 x 0.081 [225 x 175 x 2.0]	10 x 8	0.5
<b>HW-MP1210A</b>	\$14.00	10.88 x 8.88 x 0.081 [276 x 225 x 2.0]	12 x 10	0.8
<b>HW-MP1412A</b>	\$15.50	12.88 x 10.88 x 0.081 [327 x 276 x 2.0]	14 x 12	1.1
<b>HW-MP1614A</b>	\$20.50	14.88 x 12.88 x 0.081 [378 x 327 x 2.0]	16 x 14	1.5
<b>HW-MP1816A</b>	\$26.50	16.88 x 14.88 x 0.081 [429 x 378 x 2.0]	18 x 16	2.5
<b>HW-MP2016A</b>	\$33.50	18.88 x 14.88 x 0.081 [479 x 378 x 2.0]	20 x 16	2.4
<b>HW-MP2020AL</b>	\$94.00	18.0 x 18.0 x 0.129 [457 x 457 x 3.3]	20 x 20	3.7
<b>HW-MP2420AL</b>	\$113.00	22.0 x 18.0 x 0.129 [558 x 457 x 3.3]	24 x 20	4.5
<b>HW-MP2424AL</b>	\$139.00	22.0 x 22.0 x 0.129 [558 x 558 x 3.3]	24 x 24	5.4

**Note: Dimensions in inches [millimeters].**

Enclosure Shipping Schedule		
Same day	1-7 days	1 - 10 days
Color indicates shipping lead time in business days.		

### Dimensions



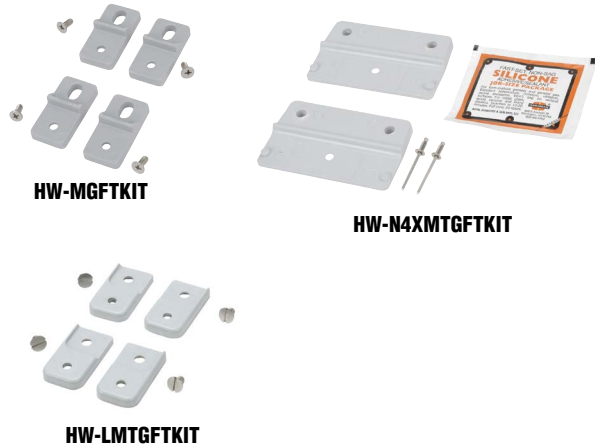
See our website: [www.AutomationDirect.com](http://www.AutomationDirect.com) for complete engineering drawings.

# Enclosure Accessories - Mounting Feet and Casters



## Mounting Feet for Premier, Slim Line, Classic, and In-Line Series Enclosures

Mounting Foot Kit	Price	Description	Wt. [oz]
<b>HW-MGFTKIT</b>	\$13.50	Hubbell-Wiegmann mounting feet kit, fiberglass-reinforced polyester, for use on Premier series non-metallic enclosures. Includes (4) mounting feet and mounting hardware.	1
<b>HW-N4XMTGFTKIT</b>	\$25.50	Hubbell-Wiegmann mounting feet kit, fiberglass-reinforced polyester, for use on Slim Line and In-line series non-metallic enclosures. Includes (2) mounting feet, mounting hardware and silicone adhesive/sealant. (Fits 4-inch wide HW-N4Xxxx, HW-N4XxPB and HW-N4XxPB-22 series enclosures only.)	1
<b>HW-LMTGFTKIT</b>	\$25.508.00	Hubbell-Wiegmann mounting feet kit, fiberglass-reinforced polyester, for use on Classic series non-metallic enclosures. Includes (4) mounting feet and mounting hardware.	1



## Mounting Feet for Ultimate Series Enclosures

Mounting Feet	Price	Description	Wt. [lb]
<b>N412MFK</b>	\$17.25	Hubbell-Wiegmann mounting feet kit, plated finish. For use on NEMA 412 Ultimate series enclosures. Includes (4) mounting feet, mounting hardware and sealing washers.	4
<b>N412MFKSS</b>	\$48.00	Hubbell-Wiegmann mounting feet kit, 304 stainless steel. For use on NEMA 412 Ultimate series enclosures. Includes (4) mounting feet, mounting hardware and sealing washers.	4



## Casters

Casters can be used on any enclosure to provide mobility. Caster kits include mounting plates designed to fit Hubbell-Wiegmann WC10 and WC12 consoles, but can be adapted to fit other enclosures.

Caster Kit	Price	Description	Wt. [lb]	Capacity [lb]
<b>WC10C</b>	\$173.00	Hubbell-Wiegmann caster kit, for WC10 consoles. Includes 4 zinc-plated steel casters (2 swivel, 2 stationary), 2 ANSI 61 gray mounting plates and hardware.	4	200
<b>WC12C</b>	\$173.00	Hubbell-Wiegmann caster kit, for WC12 consoles. Includes 4 zinc-plated steel casters (2 swivel, 2 stationary), 2 ANSI 61 gray mounting plates and hardware.	4	200



Enclosure Shipping Schedule		
Same day	1 - 7 days	1-10 days
Color indicates shipping lead time in business days.		

# Enclosure Accessories - Hole Seals and Plugs



## Hole Plugs for Non-Metal Enclosures

Designed to seal extra pushbutton holes, conduit openings, and knockout openings in Hubbell-Wiegman fiberglass enclosures from dirt, dust, oil, and water. Conduit hole sizes are nominal trade sizes, not actual hole sizes. (Example: 1 in. conduit actual diameter = 1.315 in.)



Hole Plugs	Price	Description	Nominal Hole Diameter Range in [mm]	Wt. [oz]
<b>HW-FGHP</b>	\$4.75	Hubbell-Wiegmann hole plug, fiber-reinforced plastic (FRP), closed-cell neoprene gasket, for 1/2 to 3/4-inch hole in non-metallic enclosure	0.50 - 0.81 [12.7 - 20.6]	2
<b>HW-FGHP-PB-000</b>	\$11.50	Hubbell-Wiegmann hole plug, fiberglass-reinforced plastic (FRP), closed-cell neoprene gasket. For use with 1/2in conduit holes in non-metallic enclosures.	0.88 [22.4]	2
<b>HW-FGHP-PB-075</b>	\$5.75	Hubbell-Wiegmann hole plug, fiber-reinforced plastic (FRP), closed-cell neoprene gasket, for 1/2- to 3/4-inch conduit holes and 22 or 30mm pushbutton holes in non-metallic enclosure	0.88 - 1.28 [22.4 - 32.5]	2
<b>HW-FGHP-100-125</b>	\$9.50	Hubbell-Wiegmann hole plug, fiber-reinforced plastic (FRP), closed-cell neoprene gasket, for 1 to 1-1/4 inch conduit holes in non-metallic enclosure	1.38 - 1.75 [35.1 - 44.5]	2
<b>HW-FGHP-150-200*</b>	\$11.50	Hubbell-Wiegmann hole plug, fiber-reinforced plastic (FRP), closed-cell neoprene gasket, for 1-1/2 to 2-inch conduit holes in non-metallic enclosure	2.00 - 2.56 [50.1 - 65.0]	2
<b>HW-FGHP-200-275</b>	\$21.50	Hubbell-Wiegmann hole plug, fiberglass-reinforced plastic (FRP), closed-cell neoprene gasket. For use with 2-1/2in conduit holes in non-metallic enclosures.	3.00 [76.2]	2
<b>HW-FGHP-250-350</b>	\$28.50	Hubbell-Wiegmann hole plug, fiberglass-reinforced plastic (FRP), closed-cell neoprene gasket. For use with 3in conduit holes in non-metallic enclosures.	3.62 [92.0]	2
<b>HW-FGHP-300-425</b>	\$37.00	Hubbell-Wiegmann hole plug, fiberglass-reinforced plastic (FRP), closed-cell neoprene gasket. For use with 3-1/2in conduit holes in non-metallic enclosures.	4.12 [104.7]	2
<b>HW-FGHP-350-500</b>	\$47.50	Hubbell-Wiegmann hole plug, fiberglass-reinforced plastic (FRP), closed-cell neoprene gasket. For use with 4in conduit holes in non-metallic enclosures.	4.62 [117.4]	2

*\*Note: Will maintain NEMA 4X rating.*

Enclosure Shipping Schedule			
Same day	1-7 days	1-10 days	1 - 15 days

Color indicates shipping lead time in business days.