

Fiberglass Enclosures – Premier Series

Screw Cover



HW-80804SC

Construction

- Hot compression molded fiberglass reinforced polyester (thermoset)
- Poured polyurethane seamless gasket provides watertight, dust-tight environmental seal
- Excellent chemical and corrosion resistance
- UV resistant
- Rounded edges, minimal protrusions or exposed pocket area for accumulation of dust or debris
- 304 stainless steel used on all external hardware
- Optional mounting feet available
- Opaque cover with four screws
- Raised bosses with brass inserts accepting 10-32 screws for optional panel mounting
- High impact resistance - 216 in/lb per UL746C
- Color: Gray

Listings

- UL/cUL 50/508, Types 1, 3, 3S, 12, 13, 4x [UL File E64791]
- CSA Certified, Types 1, 3, 3S, 12, 13, 4x [CSA File 222873]
- NEMA Standard 250, Types 1, 3, 3S, 12, 13, 4x
- IEC 60529 IP66
- Flammability Rating: UL94-5V
- Non-flame propagating
- Flame Spread classification per NFPA No. 101, Class A [1]
- Temperature Range: -76 °F to 274 °F [-60°C to 134°C]



Enclosure Shipping Schedule		
Same day	1 - 10 days	1-15 days
Color indicates shipping lead time in business days.		

Premier Series Fiberglass Enclosures - Screw Cover							
Part Number	Price	Enclosure Overall Size HxWxD	Wt. [lb]	Carbon Steel Subpanel	Fiberglass Subpanel	Stainless Steel Subpanel	Aluminum Subpanel
HW-60604SC	\$64.00	7.41 x 7.79 x 4.31 [188 x 198 x 110]	3.1	HW-MP606CS	HW-MP606FG	HW-MP606SS	HW-MP606A
HW-80604SC	\$68.00	9.41 x 7.79 x 4.31 [239 x 198 x 110]	3.4	HW-MP806CS	HW-MP806FG	HW-MP806SS	HW-MP806A
HW-80804SC	\$70.00	9.39 x 9.76 x 4.31 [239 x 248 x 109]	4.1	HW-MP808CS	HW-MP808FG	HW-MP808SS	-
HW-100806SC	\$85.00	11.42 x 9.79 x 6.31 [290 x 249 x 160]	5.2	HW-MP1008CS	HW-MP1008FG	HW-MP1008SS	HW-MP1008A
HW-121006SC	\$96.00	13.45 x 11.83 x 6.31 [342 x 301 x 160]	6.8	HW-MP1210CS	HW-MP1210FG	HW-MP1210SS	HW-MP1210A
HW-141206SC	\$113.00	15.44 x 13.86 x 6.34 [392 x 352 x 161]	8.6	HW-MP1412CS	HW-MP1412FG	HW-MP1412SS	HW-MP1412A
HW-141208SC	\$120.00	15.44 x 13.86 x 8.34 [392 x 352 x 212]	11.0	HW-MP1412CS	HW-MP1412FG	HW-MP1412SS	HW-MP1412A
HW-161408SC	\$132.00	17.58 x 15.96 x 8.34 [447 x 405 x 212]	10.3	HW-MP1614CS	HW-MP1614FG	HW-MP1614SS	HW-MP1614A
HW-181610SC	\$175.00	19.77 x 18.15 x 10.34 [502 x 461 x 263]	17.9	HW-MP1816CS	HW-MP1816FG	HW-MP1816SS	HW-MP1816A
HW-201610SC	\$306.00	21.79 x 18.16 x 10.34 [554 x 461 x 263]	17.9	HW-MP2016CS	HW-MP2016FG	HW-MP2016SS	HW-MP2016A

*Notes: Subpanels must be ordered separately.
Dimensions in inches [millimeters].
Mounting foot kit [HW-MGFTKIT] must be ordered separately.*

Fiberglass Enclosures – Premier Series

Hinged Screw Cover



HW-80804CHSC

Construction

- Hot compression molded fiberglass reinforced polyester (thermoset).
- Poured polyurethane seamless gasket provides watertight, dust-tight environmental seal
- Excellent chemical and corrosion resistance
- UV resistant
- Rounded edges, minimal protrusions or exposed pocket area for accumulation of dust or debris
- 304 stainless steel used on all external hardware
- Optional mounting feet available
- Opaque, hinged cover with two screws.
- Raised bosses with brass inserts accepting 10-32 screws for optional panel mounting
- High impact resistance - 216 in/lb per UL746C
- Full 180° door opening
- Color: Gray

Listings

- UL/cUL 50/508, Types 1, 3, 3S, 12, 13, 4x [UL File E64791]
- CSA Certified, Types 1, 3, 3S, 12, 13, 4x [CSA File 222873]
- NEMA Standard 250, Types 1, 3, 3S, 12, 13, 4x
- IEC 60529 IP66
- Flammability Rating: UL94-5V
- Non-flame propagating
- Flame Spread classification per NFPA No. 101, Class A [1]
- Temperature Range: -76°F to 274°F [-60°C to 134°C]



Enclosure Shipping Schedule		
Same day	1 - 10 days	1-15 days
Color indicates shipping lead time in business days.		

Premier Series Fiberglass Enclosures - Hinged Screw Cover							
Part Number	Price	Enclosure Overall Size HxWxD	Wt. [lb]	Carbon Steel Subpanel	Fiberglass Subpanel	Stainless Steel Subpanel	Aluminum Subpanel
HW-60604CHSC	\$58.00	7.41 x 7.79 x 4.31 [188.3 x 197.9 x 109.5]	3.5	HW-MP606CS	HW-MP606FG	HW-MP606SS	HW-MP606A
HW-80604CHSC	\$60.00	9.41 x 7.79 x 4.31 [239.1 x 197.9 x 109.5]	3.7	HW-MP806CS	HW-MP806FG	HW-MP806SS	HW-MP806A
HW-80804CHSC	\$65.00	9.39 x 9.76 x 4.31 [238.5 x 248.0 x 109.5]	4.4	HW-MP808CS	HW-MP808FG	HW-MP808SS	-
HW-100806CHSC	\$73.00	11.42 x 9.79 x 6.31 [290.1 x 248.6 x 160.3]	5.6	HW-MP1008CS	HW-MP1008FG	HW-MP1008SS	HW-MP1008A
HW-121006CHSC	\$82.00	13.45 x 11.83 x 6.31 [341.6 x 300.5 x 160.3]	7.2	HW-MP1210CS	HW-MP1210FG	HW-MP1210SS	HW-MP1210A
HW-141206CHSC	\$95.00	15.49 x 13.86 x 6.31 [393.4 x 352.0 x 160.3]	8.6	HW-MP1412CS	HW-MP1412FG	HW-MP1412SS	HW-MP1412A
HW-141208CHSC	\$102.00	15.49 x 13.86 x 8.34 [393.4 x 352.0 x 211.8]	8.6	HW-MP1412CS	HW-MP1412FG	HW-MP1412SS	HW-MP1412A
HW-161408CHSC	\$110.00	17.58 x 15.96 x 8.34 [446.6 x 405.4 x 211.8]	11.5	HW-MP1614CS	HW-MP1614FG	HW-MP1614SS	HW-MP1614A
HW-181610CHSC	\$145.00	19.77 x 18.15 x 10.34 [502.2 x 461.0 x 262.6]	17.8	HW-MP1816CS	HW-MP1816FG	HW-MP1816SS	HW-MP1816A
HW-201610CHSC	\$250.00	21.79 x 18.16 x 10.34 [553.5 x 461.2 x 262.6]	19.1	HW-MP2016CS	HW-MP2016FG	HW-MP2016SS	HW-MP2016A

Notes: Subpanels must be ordered separately.
Dimensions in inches [millimeters].
Mounting foot kit [HW-MGFTKIT] must be ordered separately.

Fiberglass Enclosures – Premier Series

Single Door with Twist-Lock Latches



HW-80804CHTL

Construction

- Hot compression molded fiberglass reinforced polyester (thermoset)
- Poured polyurethane seamless gasket provides watertight, dust-tight environmental seal
- Excellent chemical and corrosion resistance
- UV resistant
- Rounded edges, minimal protrusions or exposed pocket area for accumulation of dust or debris
- 304 stainless steel used on all external hardware
- Optional mounting feet available
- Opaque, hinged cover with two padlockable twist-lock latches
- Raised bosses with brass inserts accepting 10-32 screws for optional panel mounting
- High impact resistance - 216 in/lb per UL746C
- Full 180° door opening
- Color: Gray

Listings

- UL/cUL 50/508, Types 1, 3, 3S, 12, 13, 4x [UL File E64791]
- CSA Certified, Types 1, 3, 3S, 12, 13, 4x [CSA File 222873]
- NEMA Standard 250, Types 1, 3, 3S, 12, 13, 4x
- IEC 60529 IP66
- Fammability rating: UL94-5V
- Non-flame propagating
- Flame Spread classification per NFPA No. 101, Class A [1]
- Temperature Range: -76°F to 274°F [-60°C to 134°C]



Enclosure Shipping Schedule		
Same day	1 - 10 days	1-15 days
Color indicates shipping lead time in business days.		

Premier Series Fiberglass Enclosures - Single Door with Twist-Lock Latches							
Part Number	Price	Enclosure Overall Size HxWxD	Wt. [lb]	Carbon Steel Subpanel	Fiberglass Subpanel	Stainless Steel Subpanel	Aluminum Subpanel
HW-60604CHTL	\$94.00	7.41 x 7.79 x 4.31 [188 x 198 x 110]	2.2	HW-MP606CS	HW-MP606FG	HW-MP606SS	HW-MP606A
HW-80604CHTL	\$96.00	9.41 x 7.79 x 4.31 [239 x 198 x 110]	3.3	HW-MP806CS	HW-MP806FG	HW-MP806SS	HW-MP806A
HW-80804CHTL	\$100.00	9.39 x 9.76 x 4.31 [239 x 248 x 109]	4.2	HW-MP808CS	HW-MP808FG	HW-MP808SS	-
HW-100806CHTL	\$107.00	11.42 x 9.79 x 6.31 [290 x 249 x 160]	6.1	HW-MP1008CS	HW-MP1008FG	HW-MP1008SS	HW-MP1008A
HW-121006CHTL	\$119.00	13.45 x 11.83 x 6.31 [342 x 301 x 160]	7.0	HW-MP1210CS	HW-MP1210FG	HW-MP1210SS	HW-MP1210A
HW-141206CHTL	\$150.00	15.44 x 13.86 x 6.34 [392 x 352 x 161]	8.6	HW-MP1412CS	HW-MP1412FG	HW-MP1412SS	HW-MP1412A
HW-141208CHTL	\$164.00	15.44 x 13.86 x 8.34 [392 x 352 x 212]	10.6	HW-MP1412CS	HW-MP1412FG	HW-MP1412SS	HW-MP1412A
HW-161408CHTL	\$176.00	17.58 x 15.96 x 8.34 [447 x 405 x 212]	12.0	HW-MP1614CS	HW-MP1614FG	HW-MP1614SS	HW-MP1614A
HW-181610CHTL	\$212.00	19.77 x 18.15 x 10.34 [502 x 461 x 263]	17.7	HW-MP1816CS	HW-MP1816FG	HW-MP1816SS	HW-MP1816A
HW-201610CHTL	\$354.00	21.79 x 18.16 x 10.34 [554 x 461 x 263]	19.3	HW-MP2016CS	HW-MP2016FG	HW-MP2016SS	HW-MP2016A

Notes: Subpanels must be ordered separately.
Dimensions in inches [millimeters].
Mounting foot kit [HW-MGFTKIT] must be ordered separately.

Fiberglass Enclosures – Premier Series

Single Door with Quick-Release Latches



HW-80804CHQR

Construction

- Hot compression molded fiberglass reinforced polyester (thermoset).
- Poured polyurethane seamless gasket provides watertight, dust-tight environmental seal
- Excellent chemical and corrosion resistance
- UV resistant
- Rounded edges, minimal protrusions or exposed pocket area for accumulation of dust or debris
- 304 stainless steel used on all external hardware
- Optional mounting feet available
- Raised bosses with brass inserts accepting 10-32 screws for optional panel mounting
- High impact resistance - 216 in/lb per UL746C
- Opaque hinged cover with two padlockable quick-release latches
- Raised bosses with brass inserts accepting 10-32 screws for optional panel mounting
- Full 180° door opening
- Color: Gray

Listings

- UL/cUL 50/508, Types 1, 3, 3S, 12, 13, 4x [UL File E64791]
- CSA Certified, Types 1, 3, 3S, 12, 13, 4x [CSA File 222873]
- NEMA Standard 250, Types 1, 3, 3S, 12, 13, 4x
- IEC 60529 IP66
- Flammability Rating: UL94-5V
- Non-flame propagating
- Flame Spread classification per NFPA No. 101, Class A [1]
- Temperature Range: -76°F to 274°F [-60°C to 134°C]



Enclosure Shipping Schedule		
Same day	1 - 10 days	1-15 days
Color indicates shipping lead time in business days.		

Premier Series Fiberglass Enclosures - Single Door with Quick-Release Latches							
Part Number	Price	Enclosure Overall Size HxWxD	Wt. [lb]	Carbon Steel Subpanel	Fiberglass Subpanel	Stainless Steel Subpanel	Aluminum Subpanel
HW-60604CHQR	\$73.00	7.41 x 7.79 x 4.31 [188.3 x 197.9 x 109.5]	3.5	HW-MP606CS	HW-MP606FG	HW-MP606SS	HW-MP606A
HW-80604CHQR	\$74.00	9.41 x 7.79 x 4.31 [239.1 x 197.9 x 109.5]	3.7	HW-MP806CS	HW-MP806FG	HW-MP806SS	HW-MP806A
HW-80804CHQR	\$77.00	9.39 x 9.76 x 4.31 [238.5 x 248.0 x 109.5]	4.4	HW-MP808CS	HW-MP808FG	HW-MP808SS	-
HW-100806CHQR	\$83.00	11.42 x 9.79 x 6.31 [290.1 x 248.6 x 160.3]	5.6	HW-MP1008CS	HW-MP1008FG	HW-MP1008SS	HW-MP1008A
HW-121006CHQR	\$92.00	13.45 x 11.83 x 6.31 [341.6 x 300.5 x 160.3]	7.2	HW-MP1210CS	HW-MP1210FG	HW-MP1210SS	HW-MP1210A
HW-141206CHQR	\$116.00	15.49 x 13.86 x 6.31 [393.4 x 352.0 x 160.3]	8.6	HW-MP1412CS	HW-MP1412FG	HW-MP1412SS	HW-MP1412A
HW-141208CHQR	\$127.00	15.49 x 13.86 x 8.34 [393.4 x 352.0 x 211.8]	8.6	HW-MP1412CS	HW-MP1412FG	HW-MP1412SS	HW-MP1412A
HW-161408CHQR	\$136.00	17.58 x 15.96 x 8.34 [446.6 x 405.4 x 211.8]	11.5	HW-MP1614CS	HW-MP1614FG	HW-MP1614SS	HW-MP1614A
HW-181610CHQR	\$164.00	19.77 x 18.15 x 10.34 [502.2 x 461.0 x 262.6]	19.8	HW-MP1816CS	HW-MP1816FG	HW-MP1816SS	HW-MP1816A
HW-201610CHQR	\$261.00	21.79 x 18.16 x 10.34 [553.5 x 461.2 x 262.6]	19.1	HW-MP2016CS	HW-MP2016FG	HW-MP2016SS	HW-MP2016A

Notes: Subpanels must be ordered separately.
Dimensions in inches [millimeters].
Mounting foot kit [HW-MGFTKIT] must be ordered separately.

Fiberglass Enclosures – Premier Series

Clear Polycarbonate Hinged Screw Cover



HW-CC80804CHSC

Construction

- Hot compression molded fiberglass reinforced polyester (thermoset)
- Poured polyurethane seamless gasket provides watertight, dust-tight environmental seal
- Excellent chemical and corrosion resistance
- UV resistant
- Rounded edges, minimal protrusions or exposed pocket area for accumulation of dust or debris
- 304 stainless steel used on all external hardware
- Optional mounting feet available
- Clear polycarbonate hinged cover with two screws
- Raised bosses with brass inserts accepting 10-32 screws for optional panel mounting
- High impact resistance - 216 in/lb per UL746C
- Full 180° door opening
- Color: Gray

Listings

- UL/cUL 50/508, Types 1, 3, 3S, 12, 13, 4x [UL File E64791]
- CSA Certified, Types 1, 3, 3S, 12, 13, 4x [CSA File 222873]
- NEMA Standard 250, Types 1, 3, 3S, 12, 13, 4x
- IEC 60529 IP66
- Flammability Rating body: UL94-5V
- Flammability Rating cover: UL94 V-0
- Non-flame propagating
- Flame Spread classification per NFPA No. 101, Class A [1]
- Temperature Range body: -76°F to 274°F [-60°C to 134°C]
- Temperature Range cover: -30°F to 248°F [-34°C to 120°C]



Enclosure Shipping Schedule		
Same day	1 - 10 days	1-15 days
Color indicates shipping lead time in business days.		

Premier Series Fiberglass Enclosures - Clear Polycarbonate Hinged Screw Cover							
Part Number	Price	Enclosure Overall Size HxWxD	Wt. [lb]	Carbon Steel Subpanel	Fiberglass Subpanel	Stainless Steel Subpanel	Aluminum Subpanel
HW-CC60604CHSC	\$112.00	7.41 x 7.79 x 4.31 [188 x 198 x 110]	2.4	HW-MP606CS	HW-MP606FG	HW-MP606SS	HW-MP606A
HW-CC80804CHSC	\$136.00	9.39 x 9.76 x 4.31 [239 x 248 x 110]	3.5	HW-MP808CS	HW-MP808FG	HW-MP808SS	–
HW-CC100806CHSC	\$155.00	11.42 x 9.79 x 6.31 [290 x 249 x 160]	3.2	HW-MP1008CS	HW-MP1008FG	HW-MP1008SS	HW-MP1008A
HW-CC121006CHSC	\$172.00	13.45 x 11.83 x 6.31 [342 x 301 x 160]	5.6	HW-MP1210CS	HW-MP1210FG	HW-MP1210SS	HW-MP1210A
HW-CC141206CHSC	\$223.00	15.49 x 13.86 x 6.34 [393 x 352 x 161]	6.4	HW-MP1412CS	HW-MP1412FG	HW-MP1412SS	HW-MP1412A
HW-CC141208CHSC	\$242.00	15.49 x 13.86 x 8.34 [393 x 352 x 212]	9.4	HW-MP1412CS	HW-MP1412FG	HW-MP1412SS	HW-MP1412A
HW-CC161408CHSC	\$251.00	17.58 x 15.96 x 8.34 [447 x 405 x 212]	10.8	HW-MP1614CS	HW-MP1614FG	HW-MP1614SS	HW-MP1614A

Notes: Subpanels must be ordered separately.
 Dimensions in inches [millimeters].
 Mounting foot kit [HW-MGFTKIT] must be ordered separately.

Fiberglass Enclosures – Premier Series

Clear Polycarbonate Single Door with Twist-Lock Latches



HW-CC161408CHTL

Construction

- Hot compression molded fiberglass reinforced polyester (thermoset)
- Poured polyurethane seamless gasket provides watertight, dust-tight environmental seal
- Excellent chemical and corrosion resistance
- UV resistant
- Rounded edges, minimal protrusions or exposed pocket areas for accumulation of dust or debris
- 304 stainless steel used on all external hardware
- Optional mounting feet available
- Clear hinged polycarbonate cover with two padlockable twist-lock latches
- Raised bosses with brass inserts accepting 10-32 screws for optional panel mounting
- High impact resistance - 216 in/lb per UL746C
- Full 180° door opening
- Color: Gray

Listings

- UL/cUL 50/508 Types 1, 3, 3S, 12, 13, 4x [UL File E64791]
- CSA Certified, Types 1, 3, 3S, 12, 13, 4x [CSA File 222873]
- NEMA Standard 250, Types 1, 3, 3S, 12, 13, 4x
- IEC 60529 IP66
- Non-flame propagating
- Flammability Rating body: UL94-5V
- Flammability Rating cover: UL94 V-0
- Flame Spread classification per NFPA No. 101, Class A [1]
- Temperature Range body: -76°F to 274°F [-60°C to 134°C]
- Temperature Range cover: -30°F to 248°F [-34°C to 120°C]



Enclosure Shipping Schedule		
Same day	1 - 10 days	1-15 days
Color indicates shipping lead time in business days.		

Premier Series Fiberglass Enclosures - Clear Polycarbonate Single Door with Twist-Lock Latches							
Part Number	Price	Enclosure Overall Size HxWxD	Wt. [lb]	Carbon Steel Subpanel	Fiberglass Subpanel	Stainless Steel Subpanel	Aluminum Subpanel
HW-CC60604CHTL	\$80.00	7.41 x 7.79 x 4.31 [188.3 x 197.9 x 109.5]	3.1	HW-MP606CS	HW-MP606FG	HW-MP606SS	HW-MP606A
HW-CC80604CHTL	\$83.00	9.41 x 7.79 x 4.31 [239.1 x 197.9 x 109.5]	3.4	HW-MP806CS	HW-MP806FG	HW-MP806SS	HW-MP806A
HW-CC80804CHTL	\$90.00	9.39 x 9.76 x 4.31 [238.5 x 248.0 x 109.5]	4.1	HW-MP808CS	HW-MP808FG	HW-MP808SS	-
HW-CC100806CHTL	\$101.00	11.42 x 9.79 x 6.31 [290.1 x 248.6 x 160.3]	3.9	HW-MP1008CS	HW-MP1008FG	HW-MP1008SS	HW-MP1008A
HW-CC121006CHTL	\$112.00	13.45 x 11.83 x 6.31 [341.6 x 300.5 x 160.3]	6.8	HW-MP1210CS	HW-MP1210FG	HW-MP1210SS	HW-MP1210A
HW-CC141206CHTL	\$155.00	15.49 x 13.86 x 6.31 [393.4 x 352.0 x 160.3]	8.6	HW-MP1412CS	HW-MP1412FG	HW-MP1412SS	HW-MP1412A
HW-CC141208CHTL	\$172.00	15.49 x 13.86 x 8.34 [393.4 x 352.0 x 211.8]	11.0	HW-MP1412CS	HW-MP1412FG	HW-MP1412SS	HW-MP1412A
HW-CC161408CHTL	\$188.00	17.58 x 15.96 x 8.34 [446.6 x 405.4 x 211.8]	10.3	HW-MP1614CS	HW-MP1614FG	HW-MP1614SS	HW-MP1614A

Notes: Subpanels must be ordered separately.
Dimensions in inches [millimeters].
Mounting foot kit [HW-MGFTKIT] must be ordered separately.

Fiberglass Enclosures – Premier Series

Clear Polycarbonate Single Door with Quick-Release Latches



HW-CC161408CHQR

Construction

- Hot compression molded fiberglass reinforced polyester (thermoset)
- Poured polyurethane seamless gasket provides watertight, dust-tight environmental seal
- Excellent chemical and corrosion resistance
- UV resistant
- Rounded edges, minimal protrusions or exposed pocket areas for accumulation of dust or debris
- 304 stainless steel used on all external hardware
- Optional mounting feet available
- Clear polycarbonate hinged cover with padlockable quick-release latches
- Raised bosses with brass inserts accepting 10-32 screws for optional panel mounting
- High impact resistance - 216 in/lb per UL746C
- Full 180° door opening
- Color: Gray

Listings

- UL/cUL 50/508, Types 1, 3, 3S, 12, 13, 4x [UL File E64791]
- CSA Certified, Types 1, 3, 3S, 12, 13, 4x [CSA File 222873]
- NEMA Standard 250, Types 1, 3, 3S, 12, 13, 4x
- IEC 60529 IP66
- Non-flame propagating
- Flammability Rating body: UL94-5V
- Flammability Rating cover: UL94 V-0
- Flame Spread classification per NFPA No. 101, Class A [1]
- Temperature Range: body -76°F to 274°F [-60°C to 134°C]
- Temperature Range cover: -30°F to 248°F [-34°C to 120°C]



Enclosure Shipping Schedule		
Same day	1 - 10 days	1-15 days
Color indicates shipping lead time in business days.		

Premier Series Fiberglass Enclosures - Clear Polycarbonate Single Door with Quick-Release Latches							
Part Number	Price	Enclosure Overall Size HxWxD	Wt. [lb]	Carbon Steel Subpanel	Fiberglass Subpanel	Stainless Steel Subpanel	Aluminum Subpanel
HW-CC60604CHQR	\$79.00	7.41 x 7.79 x 4.31 [188.3 x 197.9 x 109.5]	3.1	HW-MP606CS	HW-MP606FG	HW-MP606SS	HW-MP606A
HW-CC80604CHQR	\$82.00	9.41 x 7.79 x 4.31 [239.1 x 197.9 x 109.5]	3.4	HW-MP806CS	HW-MP806FG	HW-MP806SS	HW-MP806A
HW-CC80804CHQR	\$88.00	9.39 x 9.76 x 4.31 [238.5 x 248.0 x 109.5]	4.1	HW-MP808CS	HW-MP808FG	HW-MP808SS	-
HW-CC100806CHQR	\$100.00	11.42 x 9.79 x 6.31 [290.1 x 248.6 x 160.3]	3.9	HW-MP1008CS	HW-MP1008FG	HW-MP1008SS	HW-MP1008A
HW-CC121006CHQR	\$110.00	13.45 x 11.83 x 6.31 [341.6 x 300.5 x 160.3]	6.8	HW-MP1210CS	HW-MP1210FG	HW-MP1210SS	HW-MP1210A
HW-CC141206CHQR	\$152.00	15.49 x 13.86 x 6.31 [393.4 x 352.0 x 160.3]	8.6	HW-MP1412CS	HW-MP1412FG	HW-MP1412SS	HW-MP1412A
HW-CC141208CHQR	\$176.00	15.49 x 13.86 x 8.34 [393.4 x 352.0 x 211.8]	11.0	HW-MP1412CS	HW-MP1412FG	HW-MP1412SS	HW-MP1412A
HW-CC161408CHQR	\$185.00	17.58 x 15.96 x 8.34 [446.6 x 405.4 x 211.8]	10.3	HW-MP1614CS	HW-MP1614FG	HW-MP1614SS	HW-MP1614A

Notes: Subpanels must be ordered separately.
Dimensions in inches [millimeters].
Mounting foot kit [HW-MGFTKIT] must be ordered separately.

Fiberglass Enclosures – Premier Series

Single Door with Acrylic Window and Twist-Lock Latches



HW-161408CHTLW

Construction

- Hot compression molded fiberglass reinforced polyester (thermoset)
- Poured polyurethane seamless gasket provides watertight, dust-tight environmental seal
- Excellent chemical and corrosion resistance
- UV resistant
- Rounded edges, minimal protrusions or exposed pocket areas for assembly of dust and debris
- 304 stainless steel used on all external hardware
- Optional mounting feet available
- Hinged cover with flush-bonded clear acrylic window, secured with two padlockable, twist-lock latches
- All bosses utilize threaded brass inserts accepting 10-32 screws for optional panel mounting
- High impact resistance - 216 in/lb per UL746C
- Full 180° door opening
- Abrasion-resistant acrylic material for maximum visibility
- Color: Gray

Listings

- UL/cUL 50/508, Types 1, 3, 3S, 4x, 12, 13 [UL File E64791]
- CSA Certified Types 1, 3, 3S, 12, 13, 4x [CSA File 222873]
- NEMA Standard 250, Types 1, 3, 3S, 12, 13, 4x
- IEC 60529 IP66
- Flammability Rating body: UL94 V-5
- Flammability Rating window: UL94-HB
- Temperature Range body: -76°F to 274°F [-60°C to 134°C]
- Temperature Range window: -26°F to 170°F [-32°C to 76°C]
- Non-flame propagating
- Flame Spread classification per NFPA No. 101, Class A [1]



Enclosure Shipping Schedule

Same day	1 - 10 days
----------	-------------

Color indicates shipping lead time in business days.

Premier Series Fiberglass Enclosures - Single Door with Acrylic Window and Twist-Lock Latches							
Part Number	Price	Enclosure Overall Size HxWxD	Wt. [lb]	Carbon Steel Subpanel	Fiberglass Subpanel	Stainless Steel Subpanel	Aluminum Subpanel
HW-100806CHTLW	\$166.00	11.42 x 9.79 x 6.31 (290 x 249 x 160)	5.6	HW-MP1008CS	HW-MP1008FG	HW-MP1008SS	HW-MP1008A
HW-161408CHTLW	\$311.00	17.58 x 15.96 x 8.34 (447 x 405 x 212)	12.2	HW-MP1614CS	HW-MP1614FG	HW-MP1614SS	HW-MP1614A
HW-181610CHTLW	\$345.00	19.77 x 18.15 x 10.34 (502 x 461 x 263)	18.0	HW-MP1816CS	HW-MP1816FG	HW-MP1816SS	HW-MP1816A
HW-201610CHTLW	\$557.00	21.79 x 18.16 x 10.34 (554 x 461 x 263)	18.1	HW-MP2016CS	HW-MP2016FG	HW-MP2016SS	HW-MP2016A

Notes: Subpanels must be ordered separately.
 Dimensions in inches [millimeters].
 Mounting foot kit [HW-MGFTKIT] must be ordered separately.

Fiberglass Enclosures – Premier Series

Single Door with Acrylic Window and Quick-Release Latches



HW-161408CHQRW

Construction

- Hot compression molded fiberglass reinforced polyester (thermoset)
- Poured polyurethane seamless gasket provides watertight, dust-tight environmental seal
- Excellent chemical and corrosion resistance
- UV resistant
- Rounded edges, minimal protrusions or exposed pocket area for accumulation of dust or debris
- 304 stainless steel used on all external hardware
- Optional mounting feet available
- Hinged cover with flush-bonded clear acrylic window, secured with two padlockable quick-release latches
- All bosses utilize threaded brass inserts accepting 10-32 screws for optional panel mounting
- High impact resistance - 216 in/lb per UL746C
- Full 180° door opening
- Color: Gray
- Abrasion resistant acrylic material for maximum visibility

Listings

- UL/cUL 50/508, Types 1, 3, 3S, 4x, 12, 13 [UL File E64791]
- CSA Certified, Types 1, 3, 3S, 12, 13, 4x [CSA File 222873]
- NEMA Standard 250, Types 1, 3, 3S, 12, 13, 4x
- IEC 60529 IP66
- Flammability Rating: UL94 V-5V
- Flammability Rating window: UL94-HB
- Temperature Range: -76°F to 274°F [-60°C to 134°C]
- Temperature Range window: -26°F to 170°F [-32°C to 76°C]
- Non-flame propagating
- Flame Spread classification per NFPA No. 101, Class A [1]



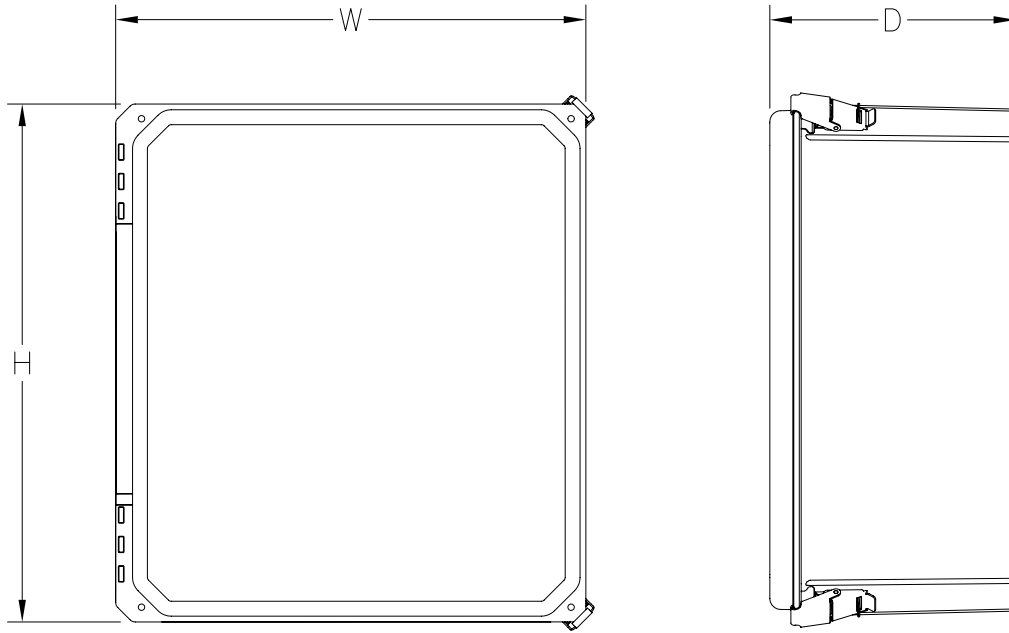
Enclosure Shipping Schedule		
Same day	1 - 10 days	1-15 days
Color indicates shipping lead time in business days.		

Premier Series Fiberglass Enclosures - Single Door with Acrylic Window and Quick-Release Latches							
Part Number	Price	Enclosure Overall Size HxWxD	Wt. [lb]	Carbon Steel Subpanel	Fiberglass Subpanel	Stainless Steel Subpanel	Aluminum Subpanel
HW-60604CHQRW	\$135.00	7.41 x 7.79 x 4.31 [188 x 198 x 110]	2.5	HW-MP606CS	HW-MP606FG	HW-MP606SS	HW-MP606A
HW-80604CHQRW	\$135.00	9.41 x 7.79 x 4.31 [239 x 198 x 110]	3.0	HW-MP806CS	HW-MP806FG	HW-MP806SS	HW-MP806A
HW-80804CHQRW	\$166.00	9.39 x 9.76 x 4.31 [239 x 248 x 110]	3.5	HW-MP808CS	HW-MP808FG	HW-MP808SS	-
HW-100806CHQRW	\$165.00	11.42 x 9.79 x 6.31 [290 x 249 x 160]	4.5	HW-MP1008CS	HW-MP1008FG	HW-MP1008SS	HW-MP1008A
HW-121006CHQRW	\$182.00	13.45 x 11.83 x 6.31 [342 x 301 x 160]	6.0	HW-MP1210CS	HW-MP1210FG	HW-MP1210SS	HW-MP1210A
HW-141206CHQRW	\$251.00	15.49 x 13.86 x 6.34 [393 x 352 x 161]	8.0	HW-MP1412CS	HW-MP1412FG	HW-MP1412SS	HW-MP1412A
HW-141208CHQRW	\$331.00	15.49 x 13.86 x 8.34 [393 x 352 x 212]	9.5	HW-MP1412CS	HW-MP1412FG	HW-MP1412SS	HW-MP1412A
HW-161408CHQRW	\$331.00	17.58 x 15.96 x 8.34 [447 x 405 x 212]	9.5	HW-MP1614CS	HW-MP1614FG	HW-MP1614SS	HW-MP1614A
HW-181610CHQRW	\$339.00	19.77 x 18.15 x 10.34 [502 x 461 x 263]	18.0	HW-MP1816CS	HW-MP1816FG	HW-MP1816SS	HW-MP1816A
HW-201610CHQRW	\$516.00	21.79 x 18.16 x 10.34 [554 x 461 x 263]	19.2	HW-MP2016CS	HW-MP2016FG	HW-MP2016SS	HW-MP2016A

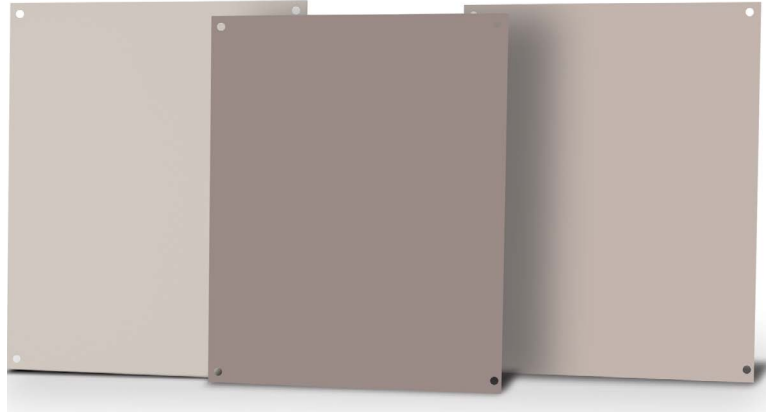
Notes: Subpanels must be ordered separately.
Dimensions in inches [millimeters].
Mounting foot kit [HW-MGFTKIT] must be ordered separately.

Fiberglass Enclosures – Premier Series

Dimensions for Premier Series Enclosures



Subpanels for Premier, JIC and Classic Series Fiberglass Enclosures



Subpanel Specifications		
Subpanel	Material	Color/Finish
Carbon Steel	Carbon Steel	White polyester powder Finish
Aluminum	3003H14 Aluminum	Mill Finish
Stainless Steel	304 Stainless	Mill Finish
Fiberglass	FRP (Fiberglass reinforced panel)	Gray



Carbon steel subpanels

Fiberglass subpanels

Subpanel Part Number	Price	Subpanel Size HxWxD	Enclosure Nominal Size HxW	Wt (lb)
HW-MP604CS	\$5.75	4.88 x 2.88 x 0.075 [124 x 73 x .19]	6 x 4	0.3
HW-MP606CS	\$5.75	4.88 x 4.88 x 0.075 [124 x 124 x .19]	6 x 6	0.5
HW-MP706CS	\$7.50	6.00 x 4.88 x 0.075 [152 x 124 x .19]	7 x 6	0.6
HW-MP806CS	\$7.75	6.75 x 4.88 x 0.075 [152 x 124 x .19]	8 x 6	0.8
HW-MP808CS	\$10.00	6.88 x 6.88 x 0.075 [175 x 175 x .19]	8 x 8	0.8
HW-MP906CS	\$9.50	8.25 x 4.88 x 0.075 [175 x 124 x .19]	9 x 6	0.9
HW-MP1008CS	\$11.50	8.75 x 6.88 x 0.075 [225 x 175 x .19]	10 x 8	1.3
HW-MP1210CS	\$14.00	10.88 x 8.75 x 0.075 [276 x 225 x .19]	12 x 10	2.1
HW-MP1412CS	\$15.50	12.88 x 10.88 x 0.075 [327 x 276 x .19]	14 x 12	3.0
HW-MP1614CS	\$20.50	14.88 x 12.88 x 0.075 [378 x 327 x .19]	16 x 14	4.1
HW-MP1816CS	\$26.50	16.88 x 14.88 x 0.075 [429 x 378 x .19]	18 x 16	5.4
HW-MP2016CS	\$33.50	18.88 x 14.88 x 0.075 [479 x 378 x .19]	20 x 16	6.1
HW-MP2020CS	\$98.00	18.00 x 18.00 x 0.105 [457 x 457 x 2.7]	20 x 20	9.4
HW-MP2420CS	\$119.00	22.00 x 18.00 x 0.105 [558 x 457 x 2.7]	24 x 20	11
HW-MP2424CS	\$146.00	22.00 x 22.00 x 0.105 [558 x 558 x 2.7]	24 x 24	22

Note: Dimensions in inches [millimeters].

Subpanel Part Number	Price	Subpanel Size HxWxD	Enclosure Nominal Size HxW	Wt. (lb)
HW-MP604FG	\$5.75	4.88 x 2.88 x 0.13 [124 x 73 x 3.2]	6 x 4	0.1
HW-MP606FG	\$5.75	4.88 x 4.88 x 0.13 [124 x 124 x 3.2]	6 x 6	0.2
HW-MP806FG	\$7.75	6.88 x 4.88 x 0.13 [175 x 124 x 3.2]	8 x 6	0.3
HW-MP808FG	\$10.00	6.88 x 6.88 x 0.13 [175 x 175 x 3.2]	8 x 8	0.3
HW-MP1008FG	\$9.50	8.88 x 6.88 x 0.13 [225 x 175 x 3.2]	10 x 8	0.5
HW-MP1210FG	\$13.50	10.88 x 8.88 x 0.13 [276 x 225 x 3.2]	12 x 10	0.9
HW-MP1412FG	\$17.00	12.88 x 10.88 x 0.13 [327 x 276 x 3.2]	14 x 12	1.0
HW-MP1614FG	\$21.00	14.88 x 12.88 x 0.13 [378 x 327 x 3.2]	16 x 14	0.8
HW-MP1816FG	\$27.00	16.88 x 14.88 x 0.13 [429 x 378 x 3.2]	18 x 16	2.0
HW-MP2016FG	\$33.00	18.88 x 14.88 x 0.13 [479 x 378 x 3.2]	20 x 16	2.2
HW-MP2020FG	\$106.00	18.00 x 18.00 x 0.13 [457 x 457 x 3.2]	20 x 20	2.3
HW-MP2420FG	\$128.00	22.00 x 18.00 x 0.13 [558 x 457 x 3.2]	24 x 20	2.8
HW-MP2424FG	\$157.00	22.00 x 22.00 x 0.13 [558 x 558 x 3.2]	24 x 24	3.5

Note: Dimensions in inches [millimeters].

Enclosure Shipping Schedule			
Same day	1-7 days	1 - 10 days	1-15 days

Color indicates shipping lead time in business days.

Subpanels for Premier, JIC and Classic Series Fiberglass Enclosures

Stainless steel subpanels

Subpanel Part Number	Price	Subpanel Size HxWxD	Enclosure Nominal Size HxW	Wt. (lb)
HW-MP604SS	\$7.75	4.88 x 2.88 x 0.064 [124 x 73 x 1.5]	6 x 4	0.3
HW-MP606SS	\$9.75	4.88 x 4.88 x 0.064 [124 x 124 x 1.5]	6 x 6	0.5
HW-MP806SS	\$12.50	6.88 x 4.88 x 0.064 [175 x 124 x 1.5]	8 x 6	0.8
HW-MP808SS	\$15.50	6.88 x 6.88 x 0.064 [175 x 175 x 1.5]	8 x 8	0.8
HW-MP1008SS	\$21.00	8.88 x 6.88 x 0.064 [225 x 175 x 1.5]	10 x 8	1.2
HW-MP1210SS	\$31.50	10.88 x 8.88 x 0.064 [276 x 225 x 1.5]	12 x 10	1.9
HW-MP1412SS	\$46.50	12.88 x 10.88 x 0.064 [327 x 276 x 1.5]	14 x 12	2.9
HW-MP1614SS	\$56.00	14.88 x 12.88 x 0.064 [378 x 327 x 1.5]	16 x 14	3.1
HW-MP1816SS	\$65.00	16.88 x 14.88 x 0.064 [429 x 378 x 1.5]	18 x 16	6.0
HW-MP2016SS	\$77.00	18.88 x 14.88 x 0.064 [479 x 378 x 1.5]	20 x 16	6.1

Note: Dimensions in inches [millimeters].



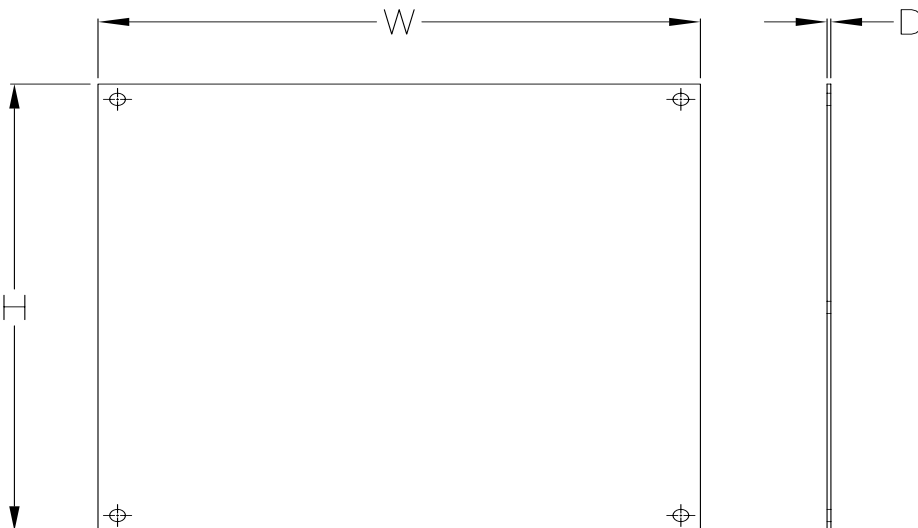
Aluminum subpanels

Subpanel Part Number	Price	Subpanel Size HxWxD	Enclosure Nominal Size HxW	Wt. (lb)
HW-MP604A	\$5.75	4.88 x 2.88 x 0.081 [124 x 73 x 2.0]	6 x 4	0.1
HW-MP606A	\$5.75	4.88 x 4.88 x 0.081 [124 x 124 x 2.0]	6 x 6	0.2
HW-MP806A	\$7.75	6.88 x 4.88 x 0.081 [175 x 124 x 2.0]	8 x 6	0.3
HW-MP1008A	\$11.50	8.88 x 6.88 x 0.081 [225 x 175 x 2.0]	10 x 8	0.5
HW-MP1210A	\$14.00	10.88 x 8.88 x 0.081 [276 x 225 x 2.0]	12 x 10	0.8
HW-MP1412A	\$15.50	12.88 x 10.88 x 0.081 [327 x 276 x 2.0]	14 x 12	1.1
HW-MP1614A	\$20.50	14.88 x 12.88 x 0.081 [378 x 327 x 2.0]	16 x 14	1.5
HW-MP1816A	\$26.50	16.88 x 14.88 x 0.081 [429 x 378 x 2.0]	18 x 16	2.5
HW-MP2016A	\$33.50	18.88 x 14.88 x 0.081 [479 x 378 x 2.0]	20 x 16	2.4
HW-MP2020AL	\$94.00	18.0 x 18.0 x 0.129 [457 x 457 x 3.3]	20 x 20	3.7
HW-MP2420AL	\$113.00	22.0 x 18.0 x 0.129 [558 x 457 x 3.3]	24 x 20	4.5
HW-MP2424AL	\$139.00	22.0 x 22.0 x 0.129 [558 x 558 x 3.3]	24 x 24	5.4

Note: Dimensions in inches [millimeters].

Enclosure Shipping Schedule		
Same day	1-7 days	1 - 10 days
Color indicates shipping lead time in business days.		

Dimensions



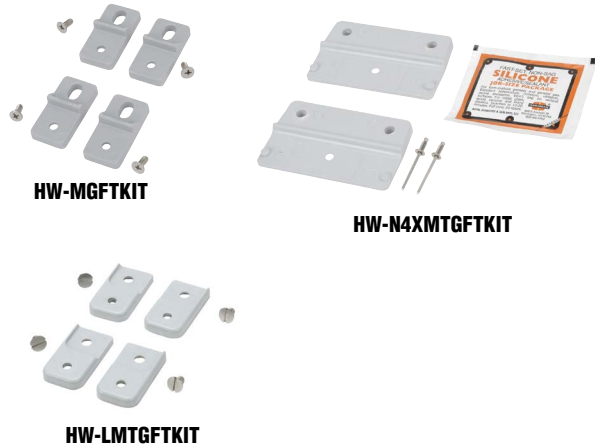
See our website: www.AutomationDirect.com for complete engineering drawings.

Enclosure Accessories - Mounting Feet and Casters



Mounting Feet for Premier, Slim Line, Classic, and In-Line Series Enclosures

Mounting Foot Kit	Price	Description	Wt. [oz]
HW-MGFTKIT	\$13.50	Hubbell-Wiegmann mounting feet kit, fiberglass-reinforced polyester, for use on Premier series non-metallic enclosures. Includes (4) mounting feet and mounting hardware.	1
HW-N4XMTGFTKIT	\$25.50	Hubbell-Wiegmann mounting feet kit, fiberglass-reinforced polyester, for use on Slim Line and In-line series non-metallic enclosures. Includes (2) mounting feet, mounting hardware and silicone adhesive/sealant. (Fits 4-inch wide HW-N4Xxxx, HW-N4XxPB and HW-N4XxPB-22 series enclosures only.)	1
HW-LMTGFTKIT	\$25.508.00	Hubbell-Wiegmann mounting feet kit, fiberglass-reinforced polyester, for use on Classic series non-metallic enclosures. Includes (4) mounting feet and mounting hardware.	1



Mounting Feet for Ultimate Series Enclosures

Mounting Feet	Price	Description	Wt. [lb]
N412MFK	\$17.25	Hubbell-Wiegmann mounting feet kit, plated finish. For use on NEMA 412 Ultimate series enclosures. Includes (4) mounting feet, mounting hardware and sealing washers.	4
N412MFKSS	\$48.00	Hubbell-Wiegmann mounting feet kit, 304 stainless steel. For use on NEMA 412 Ultimate series enclosures. Includes (4) mounting feet, mounting hardware and sealing washers.	4



Casters

Casters can be used on any enclosure to provide mobility. Caster kits include mounting plates designed to fit Hubbell-Wiegmann WC10 and WC12 consoles, but can be adapted to fit other enclosures.

Caster Kit	Price	Description	Wt. [lb]	Capacity [lb]
WC10C	\$173.00	Hubbell-Wiegmann caster kit, for WC10 consoles. Includes 4 zinc-plated steel casters (2 swivel, 2 stationary), 2 ANSI 61 gray mounting plates and hardware.	4	200
WC12C	\$173.00	Hubbell-Wiegmann caster kit, for WC12 consoles. Includes 4 zinc-plated steel casters (2 swivel, 2 stationary), 2 ANSI 61 gray mounting plates and hardware.	4	200



Enclosure Shipping Schedule		
Same day	1 - 7 days	1-10 days
Color indicates shipping lead time in business days.		

Enclosure Accessories - Hole Seals and Plugs



Hole Plugs for Non-Metal Enclosures

Designed to seal extra pushbutton holes, conduit openings, and knockout openings in Hubbell-Wiegman fiberglass enclosures from dirt, dust, oil, and water. Conduit hole sizes are nominal trade sizes, not actual hole sizes. (Example: 1 in. conduit actual diameter = 1.315 in.)



Hole Plugs	Price	Description	Nominal Hole Diameter Range in [mm]	Wt. [oz]
HW-FGHP	\$4.75	Hubbell-Wiegmann hole plug, fiber-reinforced plastic (FRP), closed-cell neoprene gasket, for 1/2 to 3/4-inch hole in non-metallic enclosure	0.50 - 0.81 [12.7 - 20.6]	2
HW-FGHP-PB-000	\$11.50	Hubbell-Wiegmann hole plug, fiberglass-reinforced plastic (FRP), closed-cell neoprene gasket. For use with 1/2in conduit holes in non-metallic enclosures.	0.88 [22.4]	2
HW-FGHP-PB-075	\$5.75	Hubbell-Wiegmann hole plug, fiber-reinforced plastic (FRP), closed-cell neoprene gasket, for 1/2- to 3/4-inch conduit holes and 22 or 30mm pushbutton holes in non-metallic enclosure	0.88 - 1.28 [22.4 - 32.5]	2
HW-FGHP-100-125	\$9.50	Hubbell-Wiegmann hole plug, fiber-reinforced plastic (FRP), closed-cell neoprene gasket, for 1 to 1-1/4 inch conduit holes in non-metallic enclosure	1.38 - 1.75 [35.1 - 44.5]	2
HW-FGHP-150-200*	\$11.50	Hubbell-Wiegmann hole plug, fiber-reinforced plastic (FRP), closed-cell neoprene gasket, for 1-1/2 to 2-inch conduit holes in non-metallic enclosure	2.00 - 2.56 [50.1 - 65.0]	2
HW-FGHP-200-275	\$21.50	Hubbell-Wiegmann hole plug, fiberglass-reinforced plastic (FRP), closed-cell neoprene gasket. For use with 2-1/2in conduit holes in non-metallic enclosures.	3.00 [76.2]	2
HW-FGHP-250-350	\$28.50	Hubbell-Wiegmann hole plug, fiberglass-reinforced plastic (FRP), closed-cell neoprene gasket. For use with 3in conduit holes in non-metallic enclosures.	3.62 [92.0]	2
HW-FGHP-300-425	\$37.00	Hubbell-Wiegmann hole plug, fiberglass-reinforced plastic (FRP), closed-cell neoprene gasket. For use with 3-1/2in conduit holes in non-metallic enclosures.	4.12 [104.7]	2
HW-FGHP-350-500	\$47.50	Hubbell-Wiegmann hole plug, fiberglass-reinforced plastic (FRP), closed-cell neoprene gasket. For use with 4in conduit holes in non-metallic enclosures.	4.62 [117.4]	2

**Note: Will maintain NEMA 4X rating.*

Enclosure Shipping Schedule			
Same day	1-7 days	1-10 days	1 - 15 days

Color indicates shipping lead time in business days.

Vents and Louvers for Non-Metallic Enclosures



Drain/Breather Vents



HW-DVKIT



HW-4XBKIT



HW-4XDVKIT

Part Number	Price	Description	Wt. (oz)
HW-DV	\$9.75	Hubbell-Wiegmann single drain vent, PVC. For use on non-metallic enclosures. Includes drain vent and silicone adhesive/sealant.	2
HW-DVKIT	\$14.00	Hubbell-Wiegmann single drain vent kit, PVC. Includes drain vent and silicone adhesive/sealant.	2
HW-4XBKIT	\$48.00	Hubbell-Wiegmann single breather vent kit allows enclosure to "breathe" while maintaining UL Type 4X enclosure rating.	4.8
HW-4XDVKIT	\$20.00	Hubbell-Wiegmann single drain vent kit properly drains unwanted moisture while maintaining UL Type 4X enclosure rating.	3.2

Enclosure Shipping Schedule	
1-7 days	1 - 15 days
Color indicates shipping lead time in business days.	

Louver Plate



HW-LPKIT

Part Number	Price	Description	Wt.
HW-LP	\$14.00	Louver plate, for ventilation in non-metallic enclosure, polypropylene, 4.5 inch wide x 4.0 inch high. For 3 inch x 3 inch cutout.	2 oz
HW-LPKIT	\$30.50	Louver plate kit, for ventilation in non-metallic enclosure. Includes 4.5 inch wide x 4.0 inch high polypropylene louver plate, rivets and silicone adhesive/sealant. For 3 inch x 3 inch cutout.	2 oz