

30mm Fiberglass Multi-Hole Pushbutton



Construction

- Hot compression molded fiberglass reinforced thermoset polyester
- Poured polyurethane seamless gasket provides watertight, dust-tight environmental seal
- Recessed captive stainless steel screws
- 300 Series stainless steel used on all external hardware
- Integral mounting flange for easy mounting
- Optional mounting feet not available on this model
- Rounded edges, minimal protrusions or exposed pocket areas for accumulation of dust or debris
- Raised bosses with brass inserts accepting 10-32 screws for optional panel mounting
- Stainless steel beaded cover retention chain
- Metal grounding strap
- Submersible, non-corrosive environmental design

- Lift off cover with four cover screws
- Non-conductive, impact resistant, UV resistant
- Temperature Range: -40°F to 250°F (-40°C to 120°C)
- Non-flame propagating
- Smooth surface, no color variations, swirls or color pockets, no voids
- Color: Gray

Listings

- UL/cUL 50/508, Types 1, 3, 4X, 6P, 12 [UL File E64791]
- CSA Standard C22.2 Types 1, 3, 4X, 6P, 12 [CSA File 222873]
- NEMA Standard 250 Types 1, 3, 4X, 6P, 12
- Flammability Rating: UL94-5V



30mm Fiberglass Multi-Hole Pushbutton								
Part Number	Price	# Holes	Enclosure Overall Size HxWxD (inches)	Wt. (lb)	Carbon Steel Subpanel	Fiberglass Subpanel	Stainless Steel Subpanel	Aluminum Subpanel
HW-N4X4PBW	\$47.50	4	7.50 x 7.50 x 4.75 [191 x 191 x 121]	2.75	HW-MP606CS	HW-MP606FG	HW-MP606SS	HW-MP606A
HW-N4X6PBW	\$53.00	6	9.62 x 7.50 x 4.74 [244 x 191 x 121]	3.5	HW-MP806CS	HW-MP806FG	HW-MP806SS	HW-MP806A
HW-N4X9PBW	\$67.00	9	11.62 x 9.41 x 4.25 [295 x 239 x 108]	5	HW-MP1008CS	HW-MP1008FG	HW-MP1008SS	HW-MP1008A

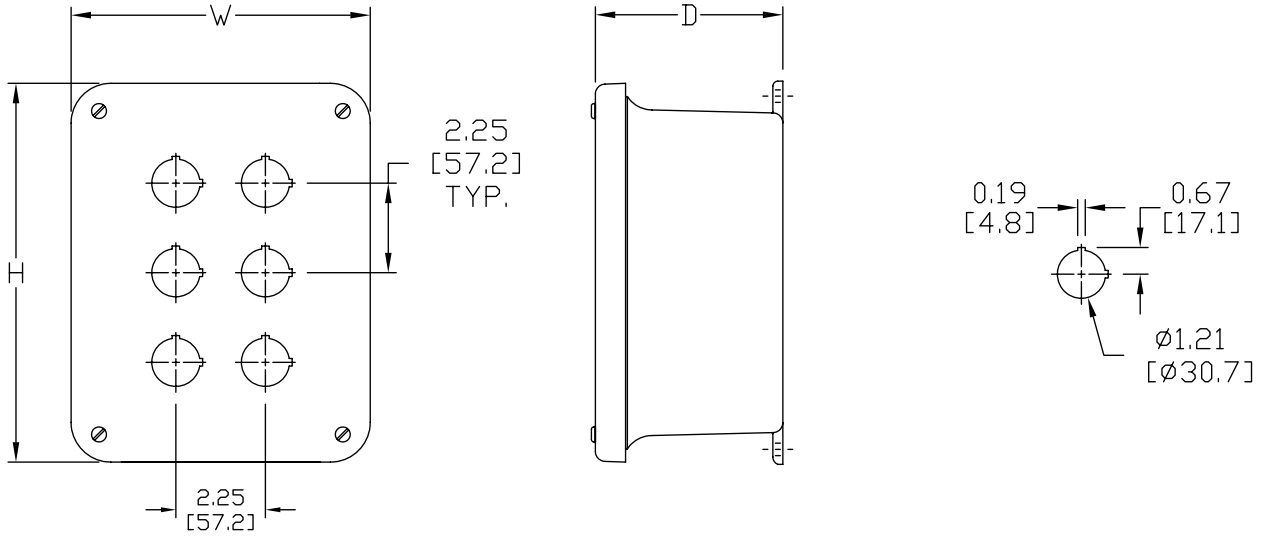
Notes: Subpanels must be ordered separately. Dimensions in inches [millimeters]. Letters in table correspond to letters on dimensional drawings.

Enclosure Shipping Schedule	
Same day	1 - 15 days
Color indicates shipping lead time in business days.	

30mm Fiberglass Multi-Hole Pushbutton



Dimensions



See our website: www.AutomationDirect.com for complete engineering drawings.

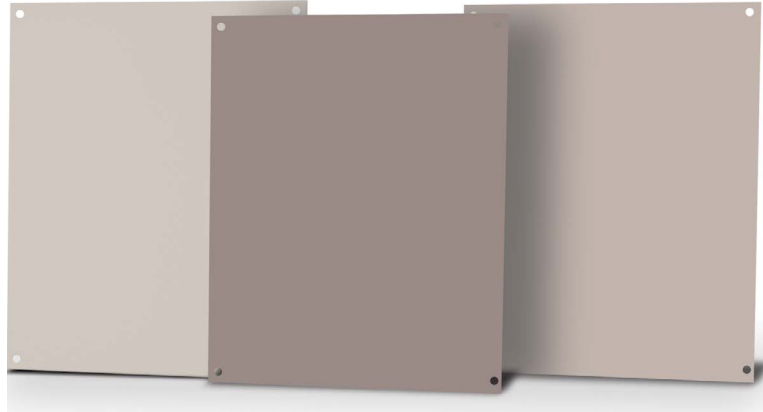
Mounting Foot Kit for Slim Line and In-Line Series



Mounting Foot Kit for Slim Line and In-Line Series			
Part Number	Price	Description	Wt.
HW-N4XMTGFTKIT	\$25.50	Mounting Foot Kit for Slim Line and In-Line Series of Non-Metallic Enclosures	1 oz.



Subpanels for Premier, JIC and Classic Series Fiberglass Enclosures



Subpanel Specifications		
Subpanel	Material	Color/Finish
Carbon Steel	Carbon Steel	White polyester powder Finish
Aluminum	3003H14 Aluminum	Mill Finish
Stainless Steel	304 Stainless	Mill Finish
Fiberglass	FRP (Fiberglass reinforced panel)	Gray



Carbon steel subpanels

Fiberglass subpanels

Subpanel Part Number	Price	Subpanel Size HxWxD	Enclosure Nominal Size HxW	Wt (lb)
HW-MP604CS	\$5.75	4.88 x 2.88 x 0.075 [124 x 73 x .19]	6 x 4	0.3
HW-MP606CS	\$5.75	4.88 x 4.88 x 0.075 [124 x 124 x .19]	6 x 6	0.5
HW-MP706CS	\$7.50	6.00 x 4.88 x 0.075 [152 x 124 x .19]	7 x 6	0.6
HW-MP806CS	\$7.75	6.75 x 4.88 x 0.075 [152 x 124 x .19]	8 x 6	0.8
HW-MP808CS	\$10.00	6.88 x 6.88 x 0.075 [175 x 175 x .19]	8 x 8	0.8
HW-MP906CS	\$9.50	8.25 x 4.88 x 0.075 [175 x 124 x .19]	9 x 6	0.9
HW-MP1008CS	\$11.50	8.75 x 6.88 x 0.075 [225 x 175 x .19]	10 x 8	1.3
HW-MP1210CS	\$14.00	10.88 x 8.75 x 0.075 [276 x 225 x .19]	12 x 10	2.1
HW-MP1412CS	\$15.50	12.88 x 10.88 x 0.075 [327 x 276 x .19]	14 x 12	3.0
HW-MP1614CS	\$20.50	14.88 x 12.88 x 0.075 [378 x 327 x .19]	16 x 14	4.1
HW-MP1816CS	\$26.50	16.88 x 14.88 x 0.075 [429 x 378 x .19]	18 x 16	5.4
HW-MP2016CS	\$33.50	18.88 x 14.88 x 0.075 [479 x 378 x .19]	20 x 16	6.1
HW-MP2020CS	\$98.00	18.00 x 18.00 x 0.105 [457 x 457 x 2.7]	20 x 20	9.4
HW-MP2420CS	\$119.00	22.00 x 18.00 x 0.105 [558 x 457 x 2.7]	24 x 20	11
HW-MP2424CS	\$146.00	22.00 x 22.00 x 0.105 [558 x 558 x 2.7]	24 x 24	22

Note: Dimensions in inches [millimeters].

Subpanel Part Number	Price	Subpanel Size HxWxD	Enclosure Nominal Size HxW	Wt. (lb)
HW-MP604FG	\$5.75	4.88 x 2.88 x 0.13 [124 x 73 x 3.2]	6 x 4	0.1
HW-MP606FG	\$5.75	4.88 x 4.88 x 0.13 [124 x 124 x 3.2]	6 x 6	0.2
HW-MP806FG	\$7.75	6.88 x 4.88 x 0.13 [175 x 124 x 3.2]	8 x 6	0.3
HW-MP808FG	\$10.00	6.88 x 6.88 x 0.13 [175 x 175 x 3.2]	8 x 8	0.3
HW-MP1008FG	\$9.50	8.88 x 6.88 x 0.13 [225 x 175 x 3.2]	10 x 8	0.5
HW-MP1210FG	\$13.50	10.88 x 8.88 x 0.13 [276 x 225 x 3.2]	12 x 10	0.9
HW-MP1412FG	\$17.00	12.88 x 10.88 x 0.13 [327 x 276 x 3.2]	14 x 12	1.0
HW-MP1614FG	\$21.00	14.88 x 12.88 x 0.13 [378 x 327 x 3.2]	16 x 14	0.8
HW-MP1816FG	\$27.00	16.88 x 14.88 x 0.13 [429 x 378 x 3.2]	18 x 16	2.0
HW-MP2016FG	\$33.00	18.88 x 14.88 x 0.13 [479 x 378 x 3.2]	20 x 16	2.2
HW-MP2020FG	\$106.00	18.00 x 18.00 x 0.13 [457 x 457 x 3.2]	20 x 20	2.3
HW-MP2420FG	\$128.00	22.00 x 18.00 x 0.13 [558 x 457 x 3.2]	24 x 20	2.8
HW-MP2424FG	\$157.00	22.00 x 22.00 x 0.13 [558 x 558 x 3.2]	24 x 24	3.5

Note: Dimensions in inches [millimeters].

Enclosure Shipping Schedule

Same day	1-7 days	1 - 10 days	1-15 days
----------	----------	-------------	-----------

Color indicates shipping lead time in business days.

Subpanels for Premier, JIC and Classic Series Fiberglass Enclosures

Stainless steel subpanels

Subpanel Part Number	Price	Subpanel Size HxWxD	Enclosure Nominal Size HxW	Wt. (lb)
HW-MP604SS	\$7.75	4.88 x 2.88 x 0.064 [124 x 73 x 1.5]	6 x 4	0.3
HW-MP606SS	\$9.75	4.88 x 4.88 x 0.064 [124 x 124 x 1.5]	6 x 6	0.5
HW-MP806SS	\$12.50	6.88 x 4.88 x 0.064 [175 x 124 x 1.5]	8 x 6	0.8
HW-MP808SS	\$15.50	6.88 x 6.88 x 0.064 [175 x 175 x 1.5]	8 x 8	0.8
HW-MP1008SS	\$21.00	8.88 x 6.88 x 0.064 [225 x 175 x 1.5]	10 x 8	1.2
HW-MP1210SS	\$31.50	10.88 x 8.88 x 0.064 [276 x 225 x 1.5]	12 x 10	1.9
HW-MP1412SS	\$46.50	12.88 x 10.88 x 0.064 [327 x 276 x 1.5]	14 x 12	2.9
HW-MP1614SS	\$56.00	14.88 x 12.88 x 0.064 [378 x 327 x 1.5]	16 x 14	3.1
HW-MP1816SS	\$65.00	16.88 x 14.88 x 0.064 [429 x 378 x 1.5]	18 x 16	6.0
HW-MP2016SS	\$77.00	18.88 x 14.88 x 0.064 [479 x 378 x 1.5]	20 x 16	6.1

Note: Dimensions in inches [millimeters].



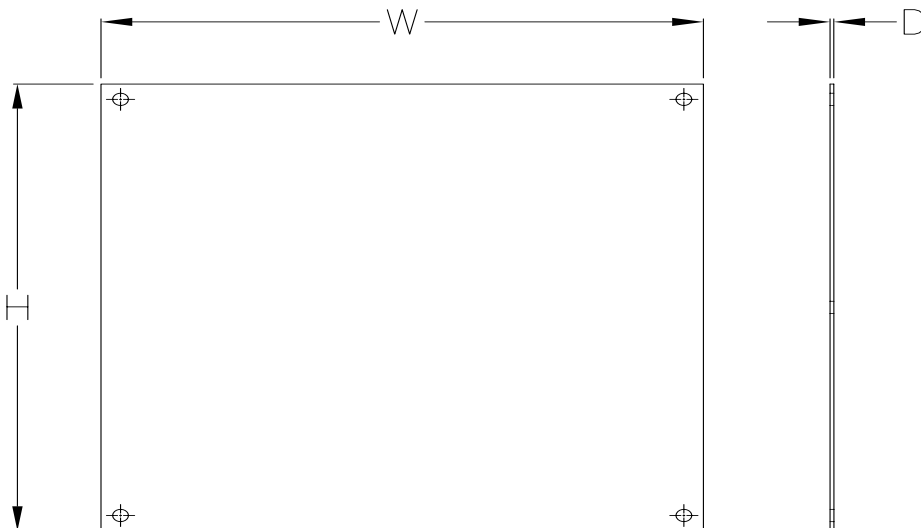
Aluminum subpanels

Subpanel Part Number	Price	Subpanel Size HxWxD	Enclosure Nominal Size HxW	Wt. (lb)
HW-MP604A	\$5.75	4.88 x 2.88 x 0.081 [124 x 73 x 2.0]	6 x 4	0.1
HW-MP606A	\$5.75	4.88 x 4.88 x 0.081 [124 x 124 x 2.0]	6 x 6	0.2
HW-MP806A	\$7.75	6.88 x 4.88 x 0.081 [175 x 124 x 2.0]	8 x 6	0.3
HW-MP1008A	\$11.50	8.88 x 6.88 x 0.081 [225 x 175 x 2.0]	10 x 8	0.5
HW-MP1210A	\$14.00	10.88 x 8.88 x 0.081 [276 x 225 x 2.0]	12 x 10	0.8
HW-MP1412A	\$15.50	12.88 x 10.88 x 0.081 [327 x 276 x 2.0]	14 x 12	1.1
HW-MP1614A	\$20.50	14.88 x 12.88 x 0.081 [378 x 327 x 2.0]	16 x 14	1.5
HW-MP1816A	\$26.50	16.88 x 14.88 x 0.081 [429 x 378 x 2.0]	18 x 16	2.5
HW-MP2016A	\$33.50	18.88 x 14.88 x 0.081 [479 x 378 x 2.0]	20 x 16	2.4
HW-MP2020AL	\$94.00	18.0 x 18.0 x 0.129 [457 x 457 x 3.3]	20 x 20	3.7
HW-MP2420AL	\$113.00	22.0 x 18.0 x 0.129 [558 x 457 x 3.3]	24 x 20	4.5
HW-MP2424AL	\$139.00	22.0 x 22.0 x 0.129 [558 x 558 x 3.3]	24 x 24	5.4

Note: Dimensions in inches [millimeters].

Enclosure Shipping Schedule		
Same day	1-7 days	1 - 10 days
Color indicates shipping lead time in business days.		

Dimensions



See our website: www.AutomationDirect.com for complete engineering drawings.