

Fiberglass Enclosures – Control Series

NEMA Type 1 and 3R Single Door with Twist-Lock Latches



HW-N3R483612CH

Construction

- Hot compression molded fiberglass reinforced polyester, hand layup FRP
- Poured polyurethane seamless gasket provides watertight, dust-tight environmental seal
- 304 stainless steel used on all external hardware
- Panel mounting capability for fixed rear panel
- Bosses with threaded brass inserts accept 3/8 - 16 screws
- Integral mounting feet
- Rounded edges, minimal protrusions or exposed pocket areas for accumulation of dust or debris
- Rain shield protection against incidental water ingress
- Dust-tight, watertight, non-corrosive environmental design
- Door has stainless steel hinge and twist-lock latches for easy entry
- Built-in padlock hasp
- Non-conductive, UV resistant
- High impact resistance - 216 in/lb per UL746C
- Smooth surface, no color variations, swirls or color pockets, no voids
- Color: Gray

Listings

- UL/cUL 50/508, Types 1, 3R [UL File E64791]
- CSA Certified, Types 1, 3R [CSA File 222873]
- NEMA Standard 250, Types 1, 3R
- Temperature Range: -76°F to 274°F [-60°C to 134°C]
- Flammability Rating: UL94-5V
- Non-flame propagating
- Flame Spread classification per NFPA No. 101: Class A (1)



Enclosure Shipping Schedule

Same day	1 -10 days
Color indicates shipping lead time in business days.	

Control Series Fiberglass Enclosures - NEMA Type 1 and 3R Single Door with Twist-Lock Latches						
Part Number	Price	Enclosure Overall Size HxWxD	Wt. (lb)	No. Latches	Carbon Steel Subpanel	Aluminum Subpanel
HW-N3R242410CH	\$503.00	27.00 x 25.24 x 11.90 [686 x 641 x 302]	36.2	2	HW-WM2424CS	HW-WM2424A
HW-N3R302008CH	\$506.00	32.86 x 20.99 x 9.89 [835 x 533 x 251]	30.9	2	HW-WM3020CS	HW-WM3020A
HW-N3R302010CH	\$601.00	32.86 x 20.99 x 11.89 [835 x 533 x 302]	31.5	2	HW-WM3020CS	HW-WM3020A
HW-N3R302410CH	\$539.00	33.41 x 26.32 x 11.95 [849 x 668 x 304]	45.7	2	HW-WM3024CS	HW-WM3024A
HW-N3R302412CH	\$571.00	33.41 x 26.32 x 13.79 [849 x 668 x 350]	44.9	2	HW-WM3024CS	HW-WM3024A
HW-N3R363008CH	\$728.00	39.31 x 32.50 x 10.05 [999 x 826 x 255]	52.7	3	HW-WM3630CS	HW-WM3630A
HW-N3R363010CH	\$736.00	39.31 x 32.50 x 12.05 [999 x 826 x 306]	57.1	3	HW-WM3630CS	HW-WM3630A
HW-N3R363012CH	\$776.00	39.31 x 32.50 x 14.05 [999 x 826 x 357]	59.7	3	HW-WM3630CS	HW-WM3630A
HW-N3R483612CH	\$1,417.00	51.29 x 36.62 x 14.43 [1303 x 930 x 367]	85.6	3	HW-WM4836CS	HW-WM4836A
HW-N3R483616CH	\$1,547.00	51.29 x 36.62 x 18.43 [1303 x 930 x 468]	94.2	3	HW-WM4836CS	HW-WM4836A

Notes: Subpanels must be ordered separately.
Dimensions in inches [millimeters].

See our website: www.AutomationDirect.com for complete engineering drawings.

Fiberglass Enclosures – Control Series

NEMA Type 1, 3, 3R, 4X and 12 - Single Door with Twist-Lock Latches



HW-N4X302412CH

Construction

- Hot compression molded fiberglass reinforced polyester, hand layup FRP
- Poured polyurethane seamless gasket provides watertight, dust-tight environmental seal
- 304 stainless steel used on all external hardware
- Panel mounting capability for fixed rear panel
- Bosses with threaded brass inserts accept 3/8-16 screws
- Integral mounting feet
- Rounded edges, minimal protrusions or exposed pocket areas for accumulation of dust or debris
- Dust-tight, watertight, non-corrosive environmental design
- Stainless steel, hinged door with twist-lock latches for easy entry
- Built-in padlock hasp on enclosure sizes 20x16 and larger
- Non-conductive, UV resistant
- High impact resistance - 216 in/lb per UL746C
- Smooth surface, no color variations, swirls or color pockets, no voids
- Color: Gray

Listings

- UL/cUL 50/508, Types 1, 3, 3R, 4X, 12 [UL File E64791]
- CSA Certified, Types 1, 3, 3R, 4x, 12 [CSA File 222873]
- NEMA Standard 250, Types 1, 3, 3R, 4x, 12
- Temperature Range: -76°F to 274°F [-60°C to 134°C]
- Flammability Rating: UL94-5V
- Non-flame propagating
- Flame Spread classification per NFPA No. 101: Class A (1)



Enclosure Shipping Schedule		
Same day	1 - 10 days	1-15 days
Color indicates shipping lead time in business days.		

Control Series Fiberglass Enclosures - NEMA Type 1, 3, 3R, 4X, and 12 - Single Door with Twist-Lock Latches							
Part Number	Price	Enclosure Overall Size HxWxD	Wt. (lb)	No. Latches	Carbon Steel Subpanel	Aluminum Subpanel	
HW-N4X161007CH	\$343.00	18.75 x 10.96 x 9.03 [476 x 278 x 229]	8.9	2	HW-WM1610CS	HW-WM1610A	
HW-N4X201612CH	\$420.00	22.75 x 16.87 x 13.77 [578 x 429 x 350]	20.5	2	HW-WM2016CS	HW-WM2016A	
HW-N4X241206CH	\$465.00	26.95 x 13.72 x 7.98 [685 x 348 x 203]	23.7	2	HW-WM2412CS	HW-WM2412A	
HW-N4X241210CH	\$452.00	26.95 x 13.72 x 11.99 [685 x 348 x 304]	22.7	2	HW-WM2412CS	HW-WM2412A	
HW-N4X242008CH	\$514.00	27.00 x 21.24 x 9.90 [686 x 539 x 252]	26.9	4	HW-WM2420CS	HW-WM2420A	
HW-N4X242410CH	\$595.00	27.00 x 25.24 x 11.90 [686 x 641 x 302]	32.6	4	HW-WM2424CS	HW-WM2424A	
HW-N4X242412CH	\$677.00	27.00 x 25.24 x 13.90 [686 x 641 x 353]	37.2	4	HW-WM2424CS	HW-WM2424A	
HW-N4X302006CH	\$540.00	32.86 x 20.99 x 7.89 [835 x 533 x 200]	27.9	5	HW-WM3020CS	HW-WM3020A	
HW-N4X302008CH	\$548.00	32.86 x 20.99 x 9.89 [835 x 533 x 251]	30.9	5	HW-WM3020CS	HW-WM3020A	
HW-N4X302010CH	\$664.00	32.86 x 20.99 x 11.89 [835 x 533 x 302]	31.5	5	HW-WM3020CS	HW-WM3020A	
HW-N4X302012CH	\$673.00	32.86 x 20.99 x 13.89 [835 x 533 x 353]	34.7	5	HW-WM3020CS	HW-WM3020A	
HW-N4X302408CH	\$615.00	33.41 x 26.32 x 8.81 [849 x 668 x 224]	42.8	5	HW-WM3024CS	HW-WM3024A	
HW-N4X302410CH	\$622.00	33.41 x 26.32 x 11.95 [849 x 668 x 304]	40.3	5	HW-WM3024CS	HW-WM3024A	
HW-N4X302412CH	\$655.00	33.41 x 26.32 x 13.79 [849 x 668 x 350]	44.9	5	HW-WM3024CS	HW-WM3024A	
HW-N4X363008CH	\$797.00	39.31 x 32.50 x 10.05 [999 x 826 x 255]	53.0	5	HW-WM3630CS	HW-WM3630A	
HW-N4X363010CH	\$806.00	39.31 x 32.50 x 12.05 [999 x 826 x 306]	57.1	5	HW-WM3630CS	HW-WM3630A	
HW-N4X363012CH	\$864.00	39.31 x 32.50 x 14.05 [999 x 826 x 357]	59.7	5	HW-WM3630CS	HW-WM3630A	
HW-N4X483612CH	\$1,440.00	51.29 x 36.62 x 13.93 [1303 x 930 x 354]	89.4	10	HW-WM4836CS	HW-WM4836A	
HW-N4X483616CH	\$1,592.00	51.29 x 36.62 x 17.93 [1303 x 930 x 456]	94.2	10	HW-WM4836CS	HW-WM4836A	
HW-N4X603612CH	\$1,866.00	63.50 x 36.50 x 14.12 [1613 x 927 x 359]	108.4	11	HW-WM6036CS	HW-WM6036A	
HW-N4X603616CH	\$2,042.00	63.50 x 36.50 x 18.12 [1613 x 927 x 460]	113.4	11	HW-WM6036CS	HW-WM6036A	

Notes: Subpanels must be ordered separately.
Dimensions in inches [millimeters].

Fiberglass Enclosures – Control Series

NEMA Type 1, 3, 3R, 4X and 12 - Single Door with Acrylic Window and Twist-Lock Latches



HW-N4X483612CHW

Construction

- Hot compression molded fiberglass reinforced polyester, hand layup FRP
- Poured polyurethane seamless gasket provides watertight, dust-tight environmental seal
- 304 stainless steel used on all external hardware
- Panel mounting capability for fixed rear panel
- Bosses with threaded brass inserts for 3/8-16 screws
- Integral mounting feet
- Rounded edges, minimal protrusions or exposed pocket areas for accumulation of dust or debris
- Dust-tight, watertight, non-corrosive environmental design
- Stainless steel, hinged door with twist-lock latches for easy entry
- Non-conductive, UV resistant
- High impact resistance - 216 in/lb per UL746C
- Smooth surface, no color variations, swirls or color pockets, no voids
- Scratch- and abrasion-resistant, UVA acrylic flush-bonded window
- Color: Gray

Listings

- UL/cUL 50/508, Types 1, 3, 3R, 4X, 12 [UL File E64791]
- CSA Certified, Types 1, 3, 3R, 4X, 12 [CSA File 222873]
- NEMA Standard 250, Types 1, 3, 3R, 4X, 12
- Temperature Range: -76°F to 274°F [-60°C to 134°C]
- Window Temperature Range: -26°F to 170°F [-32°C to 76°C]
- Flammability Rating: UL94-5V
- Window Flammability: UL94V-HB
- Non-flame propagating
- Flame Spread classification per NFPA No. 101: Class A [1]



Enclosure Shipping Schedule

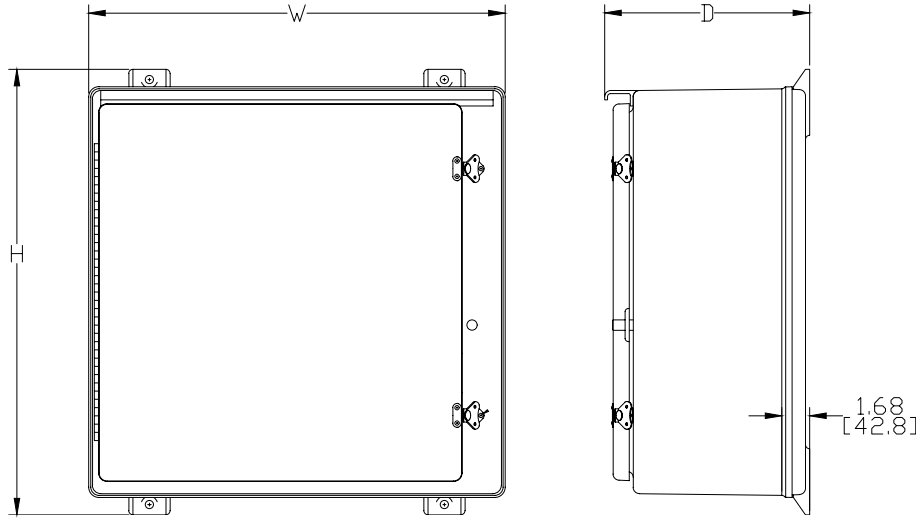
Same day	1 -10 days
Color indicates shipping lead time in business days.	

Control Series Fiberglass Enclosures - NEMA Type 1, 3, 3R, 4X and 12 - Single Door with Acrylic Window and Twist-Lock Latches						
Part Number	Price	Enclosure Overall Size HxWxD	Wt. [lb]	No. Latches	Carbon Steel Subpanel	Aluminum Subpanel
HW-N4X201610CHW	\$762.00	22.75 x 16.87 x 11.77 [578 x 429 x 299]	19.9	2	HW-WM2016CS	HW-WM2016A
HW-N4X241210CHW	\$854.00	26.95 x 13.72 x 11.99 [685 x 348 x 304]	19.8	2	HW-WM2412CS	HW-WM2412A
HW-N4X242008CHW	\$921.00	27.00 x 21.24 x 9.90 [686 x 539 x 252]	47.1	4	HW-WM2420CS	HW-WM2420A
HW-N4X242410CHW	\$1,059.00	27.00 x 25.24 x 11.90 [686 x 641 x 302]	34.1	4	HW-WM2424CS	HW-WM2424A
HW-N4X302008CHW	\$1,097.00	32.86 x 20.99 x 9.89 [835 x 533 x 251]	31.9	5	HW-WM3020CS	HW-WM3020A
HW-N4X302410CHW	\$1,136.00	33.41 x 26.32 x 11.95 [849 x 668 x 304]	45.2	5	HW-WM3024CS	HW-WM3024A
HW-N4X363012CHW	\$1,615.00	39.31 x 32.50 x 14.05 [999 x 826 x 357]	59.7	5	HW-WM3630CS	HW-WM3630A
HW-N4X483612CHW	\$2,788.00	51.29 x 36.62 x 13.93 [1303 x 930 x 354]	85.6	10	HW-WM4836CS	HW-WM4836A

*Notes: Subpanels must be ordered separately.
Dimensions in inches [millimeters].*

Fiberglass Enclosures – Control Series

Dimensions for Control Series Enclosures



Note: Mounting hole is .50" [1.27mm]

See our website: www.AutomationDirect.com for complete engineering drawings.

Subpanels for Control Series Fiberglass Enclosures



Carbon steel subpanels

Subpanel Part Number	Price	Subpanel Size HxWxD	Enclosure Nominal Size HxW	Panel Type	Wt. (lb)
HW-WM1610CS	\$25.00	13.00 x 8.50 x 0.105 [330 x 216 x 2.7]	16 x 10	Flat	3.3
HW-WM2016CS	\$43.00	17.00 x 13.00 x 0.105 [432 x 330 x 2.7]	20 x 16	Flat	6.7
HW-WM2412CS	\$41.50	21.00 x 9.00 x 0.105 [533 x 229 x 2.7]	24 x 12	Flat	8.7
HW-WM2420CS	\$85.00	21.00 x 17.00 x 0.105 [533 x 432 x 2.7]	24 x 20	Flat	11
HW-WM2424CS	\$104.00	21.00 x 21.00 x 0.105 [533 x 533 x 2.7]	24 x 24	Flat	13
HW-WM3020CS	\$108.00	27.00 x 17.00 x 0.105 [686 x 432 x 2.7]	30 x 20	Flat	14
HW-WM3024CS	\$133.00	27.00 x 21.00 x 0.105 [686 x 533 x 2.7]	30 x 24	Flat	17
HW-WM3630CS	\$208.00	33.00 x 27.00 x 0.105 [838 x 686 x 2.7]	36 x 30	Flat	27
HW-WM4836CS	\$302.00	33.00 x 45.00 x 0.105 [838 x 1143 x 2.7]	48 x 36	Formed	41
HW-WM6036CS	\$374.00	57.00 x 33.00 x 0.105 [1448 x 838 x 2.7]	60 x 36	Formed	60

Note: Dimensions in inches [millimeters].

Subpanel Specifications		
Subpanel	Material	Finish
Carbon Steel	Carbon Steel	White polyester powder Finish
Aluminum	3003H14 Aluminum	Mill Finish

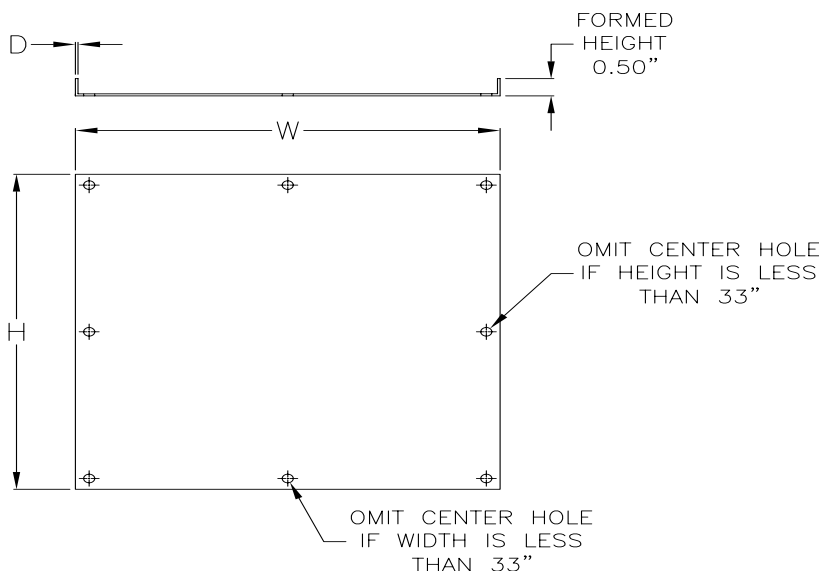
Enclosure Shipping Schedule	
Same day	1-15 days
Color indicates shipping lead time in business days	

Aluminum subpanels

Subpanel Part Number	Price	Subpanel Size HxWxD	Enclosure Nominal Size HxW	Panel Type	Wt. (lb)
HW-WM1610A	\$38.50	13.00 x 8.50 x 0.081 [330 x 216 x 2.0]	16 x 10	Flat	1.0
HW-WM2016A	\$43.00	17.00 x 13.00 x 0.081 [432 x 330 x 2.0]	20 x 16	Flat	2.0
HW-WM2412A	\$41.50	21.00 x 9.00 x 0.081 [533 x 229 x 2.0]	24 x 12	Flat	4.5
HW-WM2420A	\$85.00	21.00 x 17.00 x 0.129 [533 x 432 x 3.3]	24 x 20	Flat	4.5
HW-WM2424A	\$104.00	21.00 x 21.00 x 0.129 [533 x 533 x 3.3]	24 x 24	Flat	5.5
HW-WM3020A	\$108.00	27.00 x 17.00 x 0.129 [686 x 432 x 3.3]	30 x 20	Flat	5.8
HW-WM3024A	\$133.00	27.00 x 21.00 x 0.129 [686 x 533 x 3.3]	30 x 24	Flat	7.0
HW-WM3630A	\$208.00	33.00 x 27.00 x 0.129 [838 x 686 x 3.3]	36 x 30	Flat	11
HW-WM4836A	\$302.00	33.00 x 45.00 x 0.129 [838 x 1143 x 3.3]	48 x 36	Formed	22
HW-WM6036A	\$374.00	57.00 x 33.00 x 0.129 [1448 x 838 x 3.3]	60 x 36	Formed	23

Note: Dimensions in inches [millimeters].

Dimensions



See our website: www.AutomationDirect.com for complete engineering drawings.

Enclosure Accessories - Hole Seals and Plugs



Hole Plugs for Non-Metal Enclosures

Designed to seal extra pushbutton holes, conduit openings, and knockout openings in Hubbell-Wiegman fiberglass enclosures from dirt, dust, oil, and water. Conduit hole sizes are nominal trade sizes, not actual hole sizes. (Example: 1 in. conduit actual diameter = 1.315 in.)



Hole Plugs	Price	Description	Nominal Hole Diameter Range in [mm]	Wt. [oz]
HW-FGHP	\$4.75	Hubbell-Wiegmann hole plug, fiber-reinforced plastic (FRP), closed-cell neoprene gasket, for 1/2 to 3/4-inch hole in non-metallic enclosure	0.50 - 0.81 [12.7 - 20.6]	2
HW-FGHP-PB-000	\$11.50	Hubbell-Wiegmann hole plug, fiberglass-reinforced plastic (FRP), closed-cell neoprene gasket. For use with 1/2in conduit holes in non-metallic enclosures.	0.88 [22.4]	2
HW-FGHP-PB-075	\$5.75	Hubbell-Wiegmann hole plug, fiber-reinforced plastic (FRP), closed-cell neoprene gasket, for 1/2- to 3/4-inch conduit holes and 22 or 30mm pushbutton holes in non-metallic enclosure	0.88 - 1.28 [22.4 - 32.5]	2
HW-FGHP-100-125	\$9.50	Hubbell-Wiegmann hole plug, fiber-reinforced plastic (FRP), closed-cell neoprene gasket, for 1 to 1-1/4 inch conduit holes in non-metallic enclosure	1.38 - 1.75 [35.1 - 44.5]	2
HW-FGHP-150-200*	\$11.50	Hubbell-Wiegmann hole plug, fiber-reinforced plastic (FRP), closed-cell neoprene gasket, for 1-1/2 to 2-inch conduit holes in non-metallic enclosure	2.00 - 2.56 [50.1 - 65.0]	2
HW-FGHP-200-275	\$21.50	Hubbell-Wiegmann hole plug, fiberglass-reinforced plastic (FRP), closed-cell neoprene gasket. For use with 2-1/2in conduit holes in non-metallic enclosures.	3.00 [76.2]	2
HW-FGHP-250-350	\$28.50	Hubbell-Wiegmann hole plug, fiberglass-reinforced plastic (FRP), closed-cell neoprene gasket. For use with 3in conduit holes in non-metallic enclosures.	3.62 [92.0]	2
HW-FGHP-300-425	\$37.00	Hubbell-Wiegmann hole plug, fiberglass-reinforced plastic (FRP), closed-cell neoprene gasket. For use with 3-1/2in conduit holes in non-metallic enclosures.	4.12 [104.7]	2
HW-FGHP-350-500	\$47.50	Hubbell-Wiegmann hole plug, fiberglass-reinforced plastic (FRP), closed-cell neoprene gasket. For use with 4in conduit holes in non-metallic enclosures.	4.62 [117.4]	2

**Note: Will maintain NEMA 4X rating.*

Enclosure Shipping Schedule			
Same day	1-7 days	1-10 days	1 - 15 days

Color indicates shipping lead time in business days.

Vents and Louvers for Non-Metallic Enclosures



Drain/Breather Vents



HW-DVKIT



HW-4XBKIT

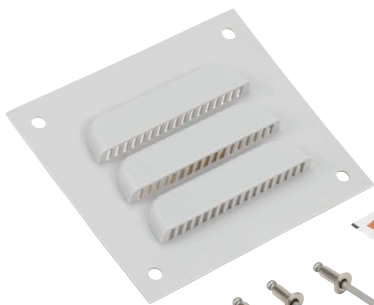


HW-4XDVKIT

Part Number	Price	Description	Wt. (oz)
HW-DV	\$9.75	Hubbell-Wiegmann single drain vent, PVC. For use on non-metallic enclosures. Includes drain vent and silicone adhesive/sealant.	2
HW-DVKIT	\$14.00	Hubbell-Wiegmann single drain vent kit, PVC. Includes drain vent and silicone adhesive/sealant.	2
HW-4XBKIT	\$48.00	Hubbell-Wiegmann single breather vent kit allows enclosure to "breathe" while maintaining UL Type 4X enclosure rating.	4.8
HW-4XDVKIT	\$20.00	Hubbell-Wiegmann single drain vent kit properly drains unwanted moisture while maintaining UL Type 4X enclosure rating.	3.2

Enclosure Shipping Schedule	
1-7 days	1 - 15 days
Color indicates shipping lead time in business days.	

Louver Plate



HW-LPKIT

Part Number	Price	Description	Wt.
HW-LP	\$14.00	Louver plate, for ventilation in non-metallic enclosure, polypropylene, 4.5 inch wide x 4.0 inch high. For 3 inch x 3 inch cutout.	2 oz
HW-LPKIT	\$30.50	Louver plate kit, for ventilation in non-metallic enclosure. Includes 4.5 inch wide x 4.0 inch high polypropylene louver plate, rivets and silicone adhesive/sealant. For 3 inch x 3 inch cutout.	2 oz