

Fiberglass Enclosures – Classic Series

Crowned Screw Cover



HW-90705SC

Construction

- Hot compression molded fiberglass reinforced polyester (thermoset)
- Poured polyurethane seamless gasket provides watertight, dust-tight environmental seal
- 304 stainless steel used on all external hardware
- Rounded edges, minimal protrusions or exposed pocket area for accumulation of dust or debris
- Raised bosses with brass inserts accepting 10-32 screws for optional panel mounting
- Workable material cuts, drills, punches and saws with ease and accuracy
- Four recessed cover screws
- Lift-off cover
- Non-conductive, UV resistant
- High impact resistance - 216 in/lb per UL746C
- Smooth surface, no color variations, swirls or color pockets, no voids
- Color: Gray

Listings

- UL/cUL 50/508, Types 1, 3, 4X, 12 [UL File E64791]
- CSA Certified, Types 1, 3, 4X, 12 [CSA File 222873]
- NEMA Standard 250, Types 1, 3, 4X, 12
- Temperature Range: -76°F to 274°F [-60°C to 134°C]
- Flammability Rating: UL94-5V
- Non-flame propagating
- Flame Spread classification per NFPA No. 101: Class A [1]



Enclosure Shipping Schedule				
Same day	1 - 7 days	1 - 10 days	1 - 15 days	1 - 20 days
Color indicates shipping lead time in business days.				

Classic Series Fiberglass Enclosures - Crowned Screw Cover							
Enclosure Part Number	Price	Enclosure Overall Size HxWxD	Wt. [lb]	Carbon Steel Subpanel	Fiberglass Subpanel	Stainless Steel Subpanel	Aluminum Subpanel
HW-70705SC	\$133.00	7.21 x 7.21 x 5.09 [183 x 183 x 129]	3.0	HW-MP604CS	HW-MP604FG	HW-MP604SS	HW-MP604A
HW-90705SC	\$141.00	9.21 x 7.21 x 5.09 [234 x 183 x 129]	3.7	HW-MP806CS	HW-MP806FG	HW-MP806SS	HW-MP806A
HW-110906SC	\$150.00	11.21 x 9.21 x 6.09 [285 x 234 x 155]	5.0	HW-MP1008CS	HW-MP1008FG	HW-MP1008SS	HW-MP1008A
HW-131106SC	\$164.00	13.21 x 11.21 x 6.59 [336 x 285 x 167]	6.3	HW-MP1210CS	HW-MP1210FG	HW-MP1210SS	HW-MP1210A
HW-151307SC	\$193.00	15.21 x 13.21 x 7.09 [386 x 336 x 180]	9.4	HW-MP1412CS	HW-MP1412FG	HW-MP1412SS	HW-MP1412A

Notes: Subpanels must be ordered separately.
Dimensions in inches [millimeters].

Fiberglass Enclosures – Classic Series

Crowned Hinged Screw Cover



HW-90705CHSC

Construction

- Hot compression molded fiberglass reinforced polyester (thermoset)
- Poured polyurethane seamless gasket provides watertight, dust-tight environmental seal
- 304 stainless steel used on all external hardware
- Rounded edges, minimal protrusions or exposed pocket area for accumulation of dust or debris
- Raised bosses with brass inserts accepting 10-32 screws for optional panel mounting
- Workable material cuts, drills, punches and saws with ease and accuracy
- Full length, stainless steel, hinged cover with two recessed cover screws
- Non-conductive, UV resistant
- High impact resistance - 216 in/lb per UL746C
- Smooth surface, no color variations, swirls or color pockets, no voids
- Color: Gray

Listings

- UL/cUL 50/508, Types 1, 3R, 4X, 12 [UL File E64791]
- CSA Certified, Types 1, 3, 4X, 12 [CSA File 222873]
- NEMA Standard 250, Types 1, 3R, 4X, 12
- Temperature Range: -76°F to 274°F [-60°C to 134°C]
- Flammability Rating: UL94-5V
- Non-flame propagating
- Flame Spread classification per NFPA No. 101: Class A [1]



Enclosure Shipping Schedule				
Same day	1 - 7 days	1 - 10 days	1 - 15 days	1 - 20 days
Color indicates shipping lead time in business days.				

Classic Series Fiberglass Enclosures - Crowned Hinged Screw Cover							
Enclosure Part Number	Price	Enclosure Overall Size HxWxD	Wt. (lb)	Carbon Steel Subpanel	Fiberglass Subpanel	Stainless Steel Subpanel	Aluminum Subpanel
HW-70705CHSC	\$141.00	7.21 x 7.21 x 5.09 [183 x 183 x 129]	3.0	HW-MP604CS	HW-MP604FG	HW-MP604SS	HW-MP604A
HW-90705CHSC	\$150.00	9.21 x 7.21 x 5.09 [234 x 183 x 129]	3.6	HW-MP806CS	HW-MP806FG	HW-MP806SS	HW-MP806A
HW-110906CHSC	\$158.00	11.21 x 9.21 x 6.09 [285 x 234 x 155]	5.1	HW-MP1008CS	HW-MP1008FG	HW-MP1008SS	HW-MP1008A
HW-131106CHSC	\$176.00	13.21 x 11.21 x 6.59 [336 x 285 x 167]	6.2	HW-MP1210CS	HW-MP1210FG	HW-MP1210SS	HW-MP12108A
HW-151307CHSC	\$204.00	15.21 x 13.21 x 7.09 [386 x 336 x 180]	9.6	HW-MP1412CS	HW-MP1412FG	HW-MP1412SS	HW-MP14128A

*Notes: Subpanels must be ordered separately.
Dimensions in inches [millimeters].*

Fiberglass Enclosures – Classic Series

Crowned Single Door with 1/4-Turn Latch



HW-70705CHQTD

Construction

- Hot compression molded fiberglass reinforced polyester (thermoset)
- Poured polyurethane seamless gasket provides watertight, dust-tight environmental seal
- 304 stainless steel used on all external hardware
- Rounded edges, minimal protrusions or exposed pocket area for accumulation of dust or debris
- Raised bosses with brass inserts accepting 10-32 screws for optional panel mounting
- Workable material cuts, drills, punches and saws with ease and accuracy
- Full length, stainless steel, hinged cover with 1/4-turn latch
- Full 180° door opening
- Non-conductive, UV resistant
- High impact resistance - 216 in/lb per UL746C
- Smooth surface, no color variations, swirls or color pockets, no voids
- Color: Gray

Listings

- UL/cUL 50/508, Types 1, 3, 4X, 12 [UL File E64791]
- CSA Certified, Types 1, 3, 4X, 12 [CSA File 222873]
- NEMA Standard 250, Types 1, 3, 4X, 12
- Temperature Range: -76°F to 274°F [-60°C to 134°C]
- Flammability Rating: UL94-5V
- Non-flame propagating
- Flame Spread classification per NFPA No. 101: Class A [1]



Enclosure Shipping Schedule				
Same day	1 - 7 days	1 -10 days	1 - 15 days	1 - 20 days
Color indicates shipping lead time in business days.				

Classic Series Fiberglass Enclosures - Crowned Single Door with 1/4-Turn Latch								
Enclosure Part Number	Price	Enclosure Overall Size HxWxD	Wt. (lb)	No. Latches	Carbon Steel Subpanel	Fiberglass Subpanel	Stainless Steel Subpanel	Aluminum Subpanel
HW-70705CHQTD	\$201.00	7.21 x 7.21 x 5.09 [183 x 183 x 129]	2.0	1	HW-MP604CS	HW-MP604FG	HW-MP604SS	HW-MP604A
HW-90705CHQTD	\$221.00	9.21 x 7.21 x 5.09 [234 x 183 x 129]	3.7	1	HW-MP806CS	HW-MP806FG	HW-MP806SS	HW-MP806A
HW-110906CHQTD	\$218.00	11.21 x 9.21 x 6.09 [285 x 234 x 155]	5.3	1	HW-MP1008CS	HW-MP1008FG	HW-MP1008SS	HW-MP1008A
HW-131106CHQTD	\$232.00	13.21 x 11.21 x 6.59 [336 x 285 x 167]	6.2	1	HW-MP1210CS	HW-MP1210FG	HW-MP1210SS	HW-MP1210A
HW-151307CHQTD	\$267.00	15.21 x 13.21 x 7.09 [386 x 336 x 180]	9.8	1	HW-MP1412CS	HW-MP1412FG	HW-MP1412S	HW-MP4120A

Notes: Subpanels must be ordered separately.
Dimensions in inches [millimeters].

Fiberglass Enclosures – Classic Series

Crowned Single Door with Twist-Lock Latch



HW-131106CHTL

Construction

- Hot compression molded fiberglass reinforced polyester (thermoset)
- Poured polyurethane seamless gasket provides watertight, dust-tight environmental seal
- 304 stainless steel used on all external hardware
- Rounded edges, minimal protrusions or exposed pocket area for accumulation of dust or debris
- Raised bosses with brass inserts accepting 10-32 screws for optional panel mounting
- Workable material cuts, drills, punches and saws with ease and accuracy
- Full length, stainless steel, hinged cover with twist-lock latches
- Full 180° door opening
- Non-conductive, UV resistant
- High impact resistance - 216 in/lb per UL746C
- Smooth surface, no color variations, swirls or color pockets, no voids
- Color: Gray

Listings

- UL/cUL 50/508, Types 1, 3, 4X, 12 [UL File E64791]
- CSA Certified, Types 1, 3, 4X, 12 [CSA File 222873]
- NEMA Standard 250, Types 1, 3, 4X, 12
- Temperature Range: -76°F to 274°F [-60°C to 134°C]
- Flammability Rating: UL94-5V
- Non-flame propagating
- Flame Spread classification per NFPA No. 101: Class A [1]



Enclosure Shipping Schedule				
Same day	1 - 7 days	1 -10 days	1 - 15 days	1 - 20 days
Color indicates shipping lead time in business days.				

Classic Series - Crowned Single Door with Twist-Lock Latch								
Part Number	Price	Enclosure Overall Size HxWxD	Wt. [lb]	No. Latches	Carbon Steel Subpanel	Fiberglass Subpanel	Stainless Steel Subpanel	Aluminum Subpanel
HW-131106CHTL	\$202.00	13.21 x 11.21 x 6.59 [336 x 285 x 167]	6.4	1	HW-MP1210CS	HW-MP1210FG	HW-MP1210SS	HW-MP1210A
HW-151307CHTL	\$247.00	15.21 x 13.21 x 7.09 [386 x 336 x 180]	10.1	2	HW-MP1412CS	HW-MP1412FG	HW-MP1412SS	HW-MP1412A

**Notes: Subpanels must be ordered separately.
Dimensions in inches [millimeters].**

Fiberglass Enclosures – Classic Series

Crowned Single Door with Quick-Release Latch



HW-151307CHQR

Construction

- Hot compression molded fiberglass reinforced polyester (thermoset)
- Poured polyurethane seamless gasket provides watertight, dust-tight environmental seal
- 304 stainless steel used on all external hardware
- Rounded edges, minimal protrusions or exposed pocket area for accumulation of dust or debris
- Raised bosses with brass inserts accepting 10-32 screws for optional panel mounting
- Workable material cuts, drills, punches and saws with ease and accuracy
- Full length, stainless steel, hinged cover with padlockable quick-release latches
- Full 180° door opening
- Non-conductive, UV resistant
- High impact resistance - 216 in/lb per UL746C
- Smooth surface, no color variations, swirls or color pockets, no voids
- Color: Gray

Listings

- UL/cUL 50/508, Types 1, 3R, 4X, 12 [UL File E64791]
- CSA Certified, Types 1, 3, 4X, 12 [CSA File 222873]
- NEMA Standard 250, Types 1, 3R, 4X, 12
- Temperature Range: -76°F to 274°F [-60°C to 134°C]
- Flammability Rating: UL94-5V
- Non-flame propagating
- Flame Spread classification per NFPA No. 101: Class A [1]



Enclosure Shipping Schedule				
Same day	1 - 7 days	1 -10 days	1 - 15 days	1 - 20 days

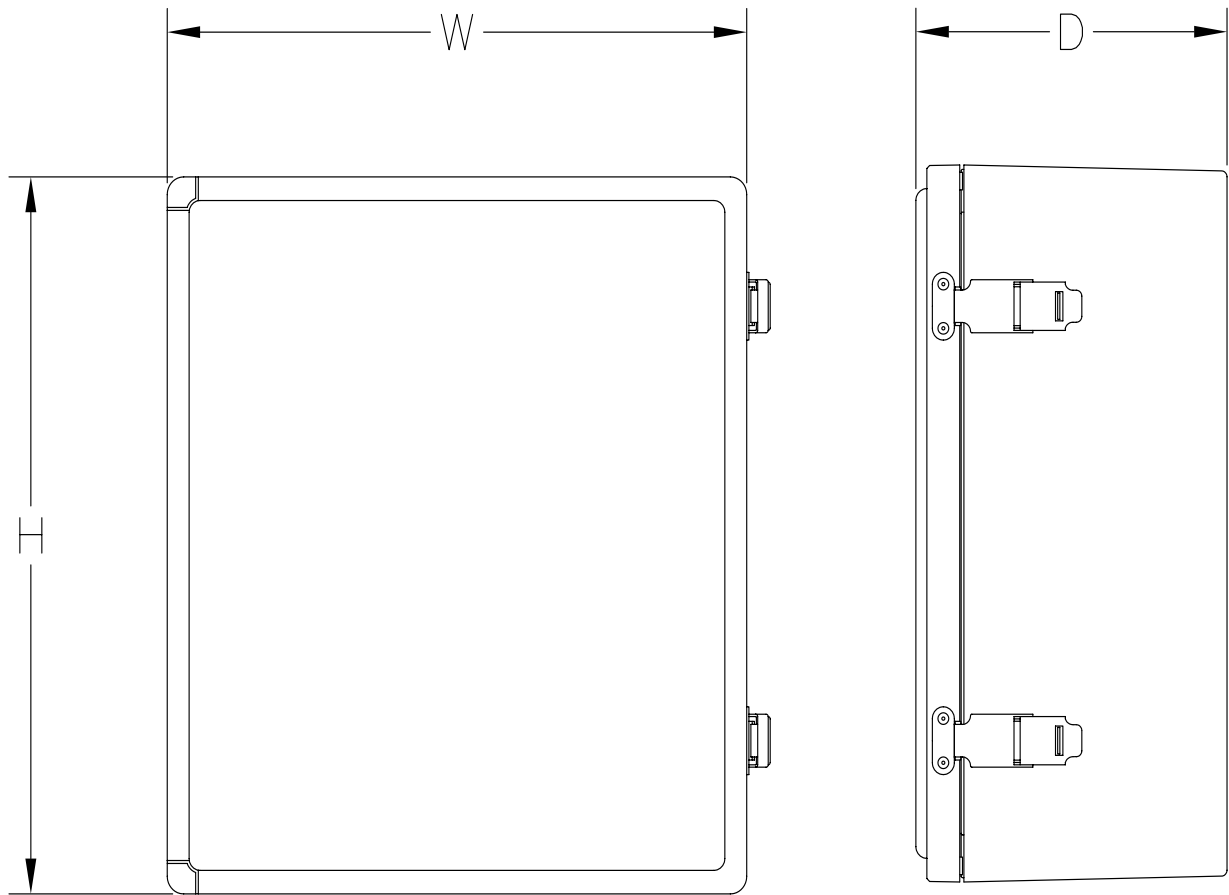
Color indicates shipping lead time in business days.

Classic Series Fiberglass Enclosures - Crowned Single Door with Quick-Release Latch								
Enclosure Part Number	Price	Enclosure Overall Size HxWxD	Wt. (lb)	No. Latches	Carbon Steel Subpanel	Fiberglass Subpanel	Stainless Steel Subpanel	Aluminum Subpanel
HW-70705CHQR	\$164.00	7.21 x 7.21 x 5.09 [183 x 183 x 129]	3.0	1	WM-MP606CS	WM-MP606FG	WM-MP606SS	WM-MP606A
HW-90705CHQR	\$174.00	9.21 x 7.21 x 5.09 [234 x 183 x 129]	3.7	1	WM-MP806CS	WM-MP806FG	WM-MP806SS	WM-MP806A
HW-110906CHQR	\$182.00	11.21 x 9.21 x 6.09 [285 x 234 x 155]	5.1	1	WM-MP1008CS	WM-MP1008FG	WM-MP1008SS	WM-MP1008A
HW-131106CHQR	\$197.00	13.21 x 11.21 x 6.59 [336 x 285 x 167]	6.4	1	HW-MP1210CS	HW-MP1210FG	HW-MP1210SS	HW-MP1210A
HW-151307CHQR	\$242.00	15.21 x 13.21 x 7.09 [386 x 336 x 180]	9.7	2	HW-MP1412CS	HW-MP1412FG	HW-MP1412SS	HW-MP1412A

Notes: Subpanels must be ordered separately. Dimensions in inches [millimeters].

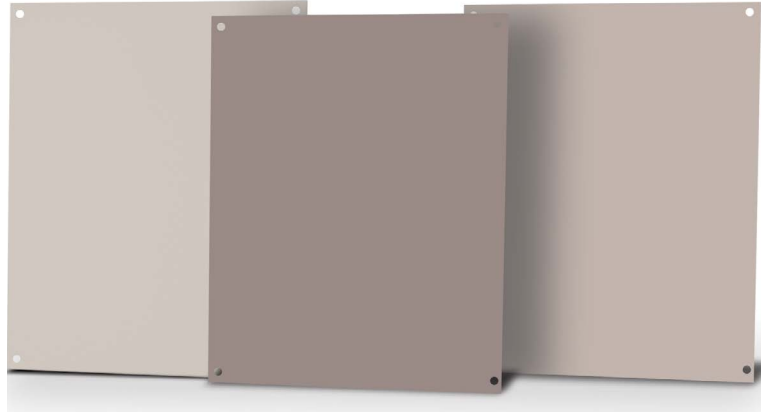
Fiberglass Enclosures – Classic Series

Dimensions for Classic Series Enclosures



See our website: www.AutomationDirect.com for complete engineering drawings.

Subpanels for Premier, JIC and Classic Series Fiberglass Enclosures



Subpanel Specifications		
Subpanel	Material	Color/Finish
Carbon Steel	Carbon Steel	White polyester powder Finish
Aluminum	3003H14 Aluminum	Mill Finish
Stainless Steel	304 Stainless	Mill Finish
Fiberglass	FRP (Fiberglass reinforced panel)	Gray



Carbon steel subpanels

Fiberglass subpanels

Subpanel Part Number	Price	Subpanel Size HxWxD	Enclosure Nominal Size HxW	Wt (lb)
HW-MP604CS	\$5.75	4.88 x 2.88 x 0.075 [124 x 73 x .19]	6 x 4	0.3
HW-MP606CS	\$5.75	4.88 x 4.88 x 0.075 [124 x 124 x .19]	6 x 6	0.5
HW-MP706CS	\$7.50	6.00 x 4.88 x 0.075 [152 x 124 x .19]	7 x 6	0.6
HW-MP806CS	\$7.75	6.75 x 4.88 x 0.075 [152 x 124 x .19]	8 x 6	0.8
HW-MP808CS	\$10.00	6.88 x 6.88 x 0.075 [175 x 175 x .19]	8 x 8	0.8
HW-MP906CS	\$9.50	8.25 x 4.88 x 0.075 [175 x 124 x .19]	9 x 6	0.9
HW-MP1008CS	\$11.50	8.75 x 6.88 x 0.075 [225 x 175 x .19]	10 x 8	1.3
HW-MP1210CS	\$14.00	10.88 x 8.75 x 0.075 [276 x 225 x .19]	12 x 10	2.1
HW-MP1412CS	\$15.50	12.88 x 10.88 x 0.075 [327 x 276 x .19]	14 x 12	3.0
HW-MP1614CS	\$20.50	14.88 x 12.88 x 0.075 [378 x 327 x .19]	16 x 14	4.1
HW-MP1816CS	\$26.50	16.88 x 14.88 x 0.075 [429 x 378 x .19]	18 x 16	5.4
HW-MP2016CS	\$33.50	18.88 x 14.88 x 0.075 [479 x 378 x .19]	20 x 16	6.1
HW-MP2020CS	\$98.00	18.00 x 18.00 x 0.105 [457 x 457 x 2.7]	20 x 20	9.4
HW-MP2420CS	\$119.00	22.00 x 18.00 x 0.105 [558 x 457 x 2.7]	24 x 20	11
HW-MP2424CS	\$146.00	22.00 x 22.00 x 0.105 [558 x 558 x 2.7]	24 x 24	22

Note: Dimensions in inches [millimeters].

Subpanel Part Number	Price	Subpanel Size HxWxD	Enclosure Nominal Size HxW	Wt. (lb)
HW-MP604FG	\$5.75	4.88 x 2.88 x 0.13 [124 x 73 x 3.2]	6 x 4	0.1
HW-MP606FG	\$5.75	4.88 x 4.88 x 0.13 [124 x 124 x 3.2]	6 x 6	0.2
HW-MP806FG	\$7.75	6.88 x 4.88 x 0.13 [175 x 124 x 3.2]	8 x 6	0.3
HW-MP808FG	\$10.00	6.88 x 6.88 x 0.13 [175 x 175 x 3.2]	8 x 8	0.3
HW-MP1008FG	\$9.50	8.88 x 6.88 x 0.13 [225 x 175 x 3.2]	10 x 8	0.5
HW-MP1210FG	\$13.50	10.88 x 8.88 x 0.13 [276 x 225 x 3.2]	12 x 10	0.9
HW-MP1412FG	\$17.00	12.88 x 10.88 x 0.13 [327 x 276 x 3.2]	14 x 12	1.0
HW-MP1614FG	\$21.00	14.88 x 12.88 x 0.13 [378 x 327 x 3.2]	16 x 14	0.8
HW-MP1816FG	\$27.00	16.88 x 14.88 x 0.13 [429 x 378 x 3.2]	18 x 16	2.0
HW-MP2016FG	\$33.00	18.88 x 14.88 x 0.13 [479 x 378 x 3.2]	20 x 16	2.2
HW-MP2020FG	\$106.00	18.00 x 18.00 x 0.13 [457 x 457 x 3.2]	20 x 20	2.3
HW-MP2420FG	\$128.00	22.00 x 18.00 x 0.13 [558 x 457 x 3.2]	24 x 20	2.8
HW-MP2424FG	\$157.00	22.00 x 22.00 x 0.13 [558 x 558 x 3.2]	24 x 24	3.5

Note: Dimensions in inches [millimeters].

Enclosure Shipping Schedule				
Same day	1 - 7 days	1 -10 days	1 - 15 days	1 - 20 days

Color indicates shipping lead time in business days.

Subpanels for Premier, JIC and Classic Series Fiberglass Enclosures

Stainless steel subpanels

Subpanel Part Number	Price	Subpanel Size HxWxD	Enclosure Nominal Size HxW	Wt. (lb)
HW-MP604SS	\$7.75	4.88 x 2.88 x 0.064 [124 x 73 x 1.5]	6 x 4	0.3
HW-MP606SS	\$9.75	4.88 x 4.88 x 0.064 [124 x 124 x 1.5]	6 x 6	0.5
HW-MP806SS	\$12.50	6.88 x 4.88 x 0.064 [175 x 124 x 1.5]	8 x 6	0.8
HW-MP808SS	\$15.50	6.88 x 6.88 x 0.064 [175 x 175 x 1.5]	8 x 8	0.8
HW-MP1008SS	\$21.00	8.88 x 6.88 x 0.064 [225 x 175 x 1.5]	10 x 8	1.2
HW-MP1210SS	\$31.50	10.88 x 8.88 x 0.064 [276 x 225 x 1.5]	12 x 10	1.9
HW-MP1412SS	\$46.50	12.88 x 10.88 x 0.064 [327 x 276] x 1.5]	14 x 12	2.9
HW-MP1614SS	\$56.00	14.88 x 12.88 x 0.064 [378 x 327 x 1.5]	16 x 14	3.1
HW-MP1816SS	\$65.00	16.88 x 14.88 x 0.064 [429 x 378 x 1.5]	18 x 16	6.0
HW-MP2016SS	\$77.00	18.88 x 14.88 x 0.064 [479 x 378 x 1.5]	20 x 16	6.1

Note: Dimensions in inches [millimeters].



Enclosure Shipping Schedule				
Same day	1 - 7 days	1 - 10 days	1 - 15 days	1 - 20 days

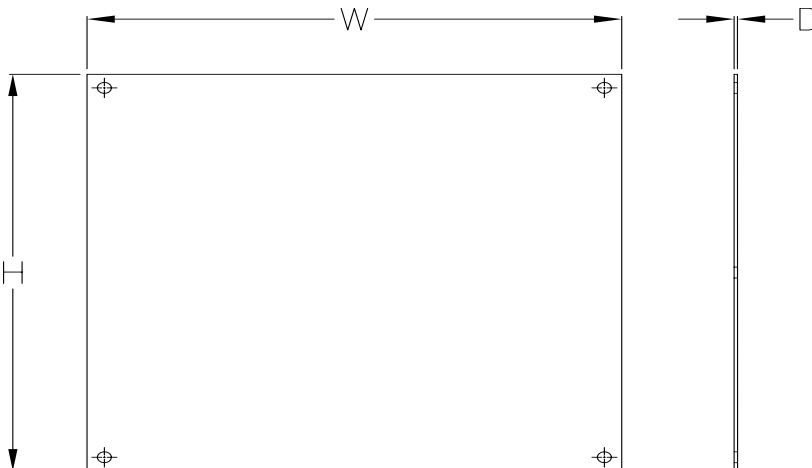
Color indicates shipping lead time in business days.

Aluminum subpanels

Subpanel Part Number	Price	Subpanel Size HxWxD	Enclosure Nominal Size HxW	Wt. (lb)
HW-MP604A	\$5.75	4.88 x 2.88 x 0.081 [124 x 73 x 2.0]	6 x 4	0.1
HW-MP606A	\$5.75	4.88 x 4.88 x 0.081 [124 x 124 x 2.0]	6 x 6	0.2
HW-MP806A	\$7.75	6.88 x 4.88 x 0.081 [175 x 124 x 2.0]	8 x 6	0.3
HW-MP1008A	\$11.50	8.88 x 6.88 x 0.081 [225 x 175 x 2.0]	10 x 8	0.5
HW-MP1210A	\$14.00	10.88 x 8.88 x 0.081 [276 x 225 x 2.0]	12 x 10	0.8
HW-MP1412A	\$15.50	12.88 x 10.88 x 0.081 [327 x 276 x 2.0]	14 x 12	1.1
HW-MP1614A	\$20.50	14.88 x 12.88 x 0.081 [378 x 327 x 2.0]	16 x 14	1.5
HW-MP1816A	\$26.50	16.88 x 14.88 x 0.081 [429 x 378 x 2.0]	18 x 16	2.5
HW-MP2016A	\$33.50	18.88 x 14.88 x 0.081 [479 x 378 x 2.0]	20 x 16	2.4
HW-MP2020AL	\$94.00	18.0 x 18.0 x 0.129 [457 x 457 x 3.3]	20 x 20	3.7
HW-MP2420AL	\$113.00	22.0 x 18.0 x 0.129 [558 x 457 x 3.3]	24 x 20	4.5
HW-MP2424AL	\$139.00	22.0 x 22.0 x 0.129 [558 x 558 x 3.3]	24 x 24	5.4

Note: Dimensions in inches [millimeters].

Dimensions



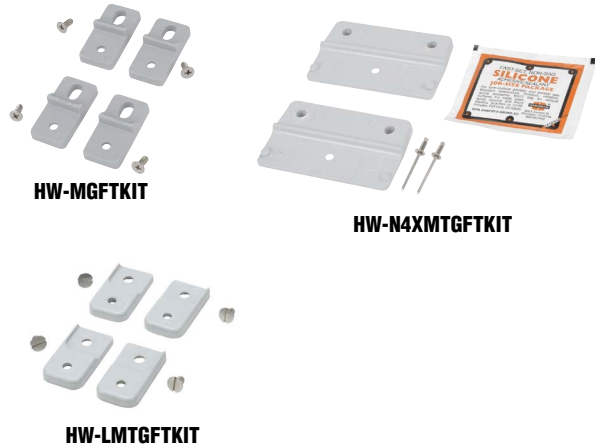
See our website: www.AutomationDirect.com for complete engineering drawings.

Enclosure Accessories - Mounting Feet and Casters



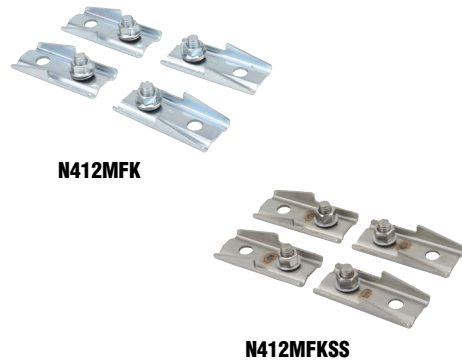
Mounting Feet for Premier, Slim Line, Classic, and In-Line Series Enclosures

Mounting Foot Kit	Price	Description	Wt. [oz]
HW-MGFTKIT	\$13.50	Hubbell-Wiegmann mounting feet kit, fiberglass-reinforced polyester, for use on Premier series non-metallic enclosures. Includes (4) mounting feet and mounting hardware.	1
HW-N4XMTGFTKIT	\$25.50	Hubbell-Wiegmann mounting feet kit, fiberglass-reinforced polyester, for use on Slim Line and In-line series non-metallic enclosures. Includes (2) mounting feet, mounting hardware and silicone adhesive/sealant. (Fits 4-inch wide HW-N4Xxxx, HW-N4XxPB and HW-N4XxPB-22 series enclosures only.)	1
HW-LMTGFTKIT	\$28.00	Hubbell-Wiegmann mounting feet kit, fiberglass-reinforced polyester, for use on Classic series non-metallic enclosures. Includes (4) mounting feet and mounting hardware.	1



Mounting Feet for Ultimate Series Enclosures

Mounting Feet	Price	Description	Wt. [lb]
N412MFK	\$17.75	Hubbell-Wiegmann mounting feet kit, plated finish. For use on NEMA 412 Ultimate series enclosures. Includes (4) mounting feet, mounting hardware and sealing washers.	4
N412MFKSS	\$49.00	Hubbell-Wiegmann mounting feet kit, 304 stainless steel. For use on NEMA 412 Ultimate series enclosures. Includes (4) mounting feet, mounting hardware and sealing washers.	4



Casters

Casters can be used on any enclosure to provide mobility. Caster kits include mounting plates designed to fit Hubbell-Wiegmann WC10 and WC12 consoles, but can be adapted to fit other enclosures.

Caster Kit	Price	Description	Wt. [lb]	Capacity [lb]
WC10C	\$177.00	Hubbell-Wiegmann caster kit, for WC10 consoles. Includes 4 zinc-plated steel casters (2 swivel, 2 stationary), 2 ANSI 61 gray mounting plates and hardware.	4	200
WC12C	\$177.00	Hubbell-Wiegmann caster kit, for WC12 consoles. Includes 4 zinc-plated steel casters (2 swivel, 2 stationary), 2 ANSI 61 gray mounting plates and hardware.	4	200



WC12C

Enclosure Shipping Schedule		
Same day	1 - 7 days	1-10 days
Color indicates shipping lead time in business days.		

Enclosure Accessories - Hole Seals and Plugs



Hole Plugs for Non-Metal Enclosures

Designed to seal extra pushbutton holes, conduit openings, and knockout openings in Hubbell-Wiegman fiberglass enclosures from dirt, dust, oil, and water. Conduit hole sizes are nominal trade sizes, not actual hole sizes. (Example: 1 in. conduit actual diameter = 1.315 in.)



Hole Plugs	Price	Description	Nominal Hole Diameter Range in [mm]	Wt. [oz]
HW-FGHP	\$4.75	Hubbell-Wiegmann hole plug, fiber-reinforced plastic (FRP), closed-cell neoprene gasket, for 1/2 to 3/4-inch hole in non-metallic enclosure	0.50 - 0.81 [12.7 - 20.6]	2
HW-FGHP-PB-000	\$11.50	Hubbell-Wiegmann hole plug, fiberglass-reinforced plastic (FRP), closed-cell neoprene gasket. For use with 1/2in conduit holes in non-metallic enclosures.	0.88 [22.4]	2
HW-FGHP-PB-075	\$5.75	Hubbell-Wiegmann hole plug, fiber-reinforced plastic (FRP), closed-cell neoprene gasket, for 1/2- to 3/4-inch conduit holes and 22 or 30mm pushbutton holes in non-metallic enclosure	0.88 - 1.28 [22.4 - 32.5]	2
HW-FGHP-100-125	\$9.50	Hubbell-Wiegmann hole plug, fiber-reinforced plastic (FRP), closed-cell neoprene gasket, for 1 to 1-1/4 inch conduit holes in non-metallic enclosure	1.38 - 1.75 [35.1 - 44.5]	2
HW-FGHP-150-200*	\$11.50	Hubbell-Wiegmann hole plug, fiber-reinforced plastic (FRP), closed-cell neoprene gasket, for 1-1/2 to 2-inch conduit holes in non-metallic enclosure	2.00 - 2.56 [50.1 - 65.0]	2
HW-FGHP-200-275	\$21.50	Hubbell-Wiegmann hole plug, fiberglass-reinforced plastic (FRP), closed-cell neoprene gasket. For use with 2-1/2in conduit holes in non-metallic enclosures.	3.00 [76.2]	2
HW-FGHP-250-350	\$28.50	Hubbell-Wiegmann hole plug, fiberglass-reinforced plastic (FRP), closed-cell neoprene gasket. For use with 3in conduit holes in non-metallic enclosures.	3.62 [92.0]	2
HW-FGHP-300-425	\$37.00	Hubbell-Wiegmann hole plug, fiberglass-reinforced plastic (FRP), closed-cell neoprene gasket. For use with 3-1/2in conduit holes in non-metallic enclosures.	4.12 [104.7]	2
HW-FGHP-350-500	\$47.50	Hubbell-Wiegmann hole plug, fiberglass-reinforced plastic (FRP), closed-cell neoprene gasket. For use with 4in conduit holes in non-metallic enclosures.	4.62 [117.4]	2

**Note: Will maintain NEMA 4X rating.*

Enclosure Shipping Schedule			
Same day	1-7 days	1-10 days	1 - 15 days

Color indicates shipping lead time in business days.

Vents and Louvers for Non-Metallic Enclosures



Drain/Breather Vents



HW-DVKIT



HW-4XBKIT

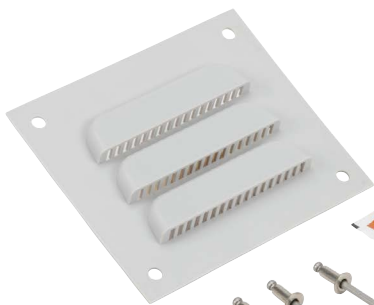


HW-4XDVKIT

Part Number	Price	Description	Wt. (oz)
HW-DV	\$9.75	Hubbell-Wiegmann single drain vent, PVC. For use on non-metallic enclosures. Includes drain vent and silicone adhesive/sealant.	2
HW-DVKIT	\$14.00	Hubbell-Wiegmann single drain vent kit, PVC. Includes drain vent and silicone adhesive/sealant.	2
HW-4XBKIT	\$48.00	Hubbell-Wiegmann single breather vent kit allows enclosure to "breathe" while maintaining UL Type 4X enclosure rating.	4.8
HW-4XDVKIT	\$20.00	Hubbell-Wiegmann single drain vent kit properly drains unwanted moisture while maintaining UL Type 4X enclosure rating.	3.2

Enclosure Shipping Schedule				
Same day	1 - 7 days	1 - 10 days	1 - 15 days	1 - 20 days
Color indicates shipping lead time in business days.				

Louver Plate



HW-LPKIT

Part Number	Price	Description	Wt.
HW-LP	\$14.00	Louver plate, for ventilation in non-metallic enclosure, polypropylene, 4.5 inch wide x 4.0 inch high. For 3 inch x 3 inch cutout.	2 oz
HW-LPKIT	\$30.50	Louver plate kit, for ventilation in non-metallic enclosure. Includes 4.5 inch wide x 4.0 inch high polypropylene louver plate, rivets and silicone adhesive/sealant. For 3 inch x 3 inch cutout.	2 oz