

Fiberglass Enclosures – JIC Series – Extra Deep

Extra-Deep Single Door with Padlocking Twist-Lock Latches



HW-J100808XD

Construction

- Hot compression molded fiberglass reinforced polyester (thermoset)
- Poured polyurethane seamless gasket provides watertight, dust-tight environmental seal
- 304 stainless steel used on all external hardware
- Rounded edges, minimal protrusions or exposed pocket area for accumulation of dust or debris
- Molded-in flange for easy mounting
- Raised bosses with brass inserts accepting 10-32 screws for optional panel mounting
- Workable material cuts, drills, punches and saws with ease and accuracy
- Clamshell-style cover
- Full length, stainless steel, hinged door with padlockable twist-lock latches
- Full 180° door opening
- Non-conductive, UV resistant
- High impact resistance - 216 in/lb per UL746C
- Smooth surface, no color variations, swirls or color pockets, no voids
- Color: Gray

Listings

- UL/cUL 50/508, Types 1, 3R, 4X, 12 [UL File E64791]
- CSA Certified, Types 1, 3, 4X, 12 [CSA File 222873]
- NEMA Standard 250 Types 1, 3R, 4X, 12
- Temperature Range: -76°F to 274°F [-60°C to 134°C]
- Flammability Rating: UL94-5V
- Non-flame propagating
- Flame Spread classification per NFPA No. 101: Class A [1]



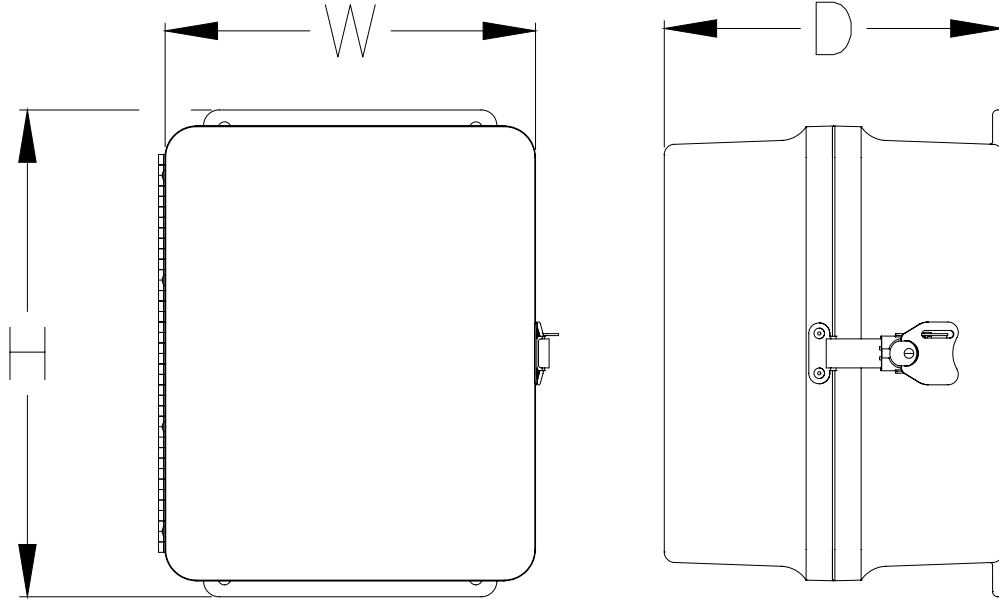
Enclosure Shipping Schedule		
Same day	1 -10 days	1-15 days
Color indicates shipping lead time in business days.		

JIC Series Fiberglass Enclosures - Extra-Deep Single Door with Padlocking Twist-Lock Latches								
Enclosure Part Number	Price	Enclosure Overall Size (HxWxD)	Wt. [lb]	No. Latches	Carbon Steel Subpanel	Fiberglass Subpanel	Stainless Steel Subpanel	Aluminum Subpanel
HW-J80608XD	\$145.00	9.63 x 6.85 x 9.06 [245 x 174 x 230]	4.5	1	HW-MP806CS	HW-MP806FG	HW-MP806SS	HW-MP806A
HW-J80808XD	\$154.00	9.56 x 8.84 x 9.44 [243 x 225 x 240]	4.8	1	HW-MP808CS	HW-MP808FG	HW-MP808SS	HW-MP808A
HW-J100808XD	\$165.00	11.63 x 8.84 x 8.09 [295 x 225 x 206]	10.4	1	HW-MP1008CS	HW-MP1008FG	HW-MP1008SS	-
HW-J121010XD	\$180.00	13.56 x 10.93 x 10.06 [344 x 278 x 256]	7.5	1	HW-MP1210CS	HW-MP1210FG	HW-MP1210SS	HW-MP1210A
HW-J141212XD	\$235.00	15.50 x 12.83 x 12.06 [394 x 326 x 306]	11.3	2	HW-MP1412CS	HW-MP1412FG	HW-MP1412SS	HW-MP1412A
HW-J161412XD	\$247.00	17.53 x 14.94 x 12.07 [445 x 379 x 307]	15.0	2	HW-MP1614CS	HW-MP1614FG	HW-MP1614SS	HW-MP1614A
HW-J181617XD	\$309.00	19.63 x 16.92 x 17.19 [499 x 430 x 437]	21.6	2	HW-MP1816CS	HW-MP1816FG	HW-MP1816SS	HW-MP1816A
HW-J201617XD	\$517.00	22.00 x 17.00 x 17.21 [559 x 432 x 437]	23.3	2	HW-MP2016CS	HW-MP2016FG	HW-MP2016SS	HW-M2016A

*Notes: Subpanels must be ordered separately.
Dimensions in inches [millimeters].*

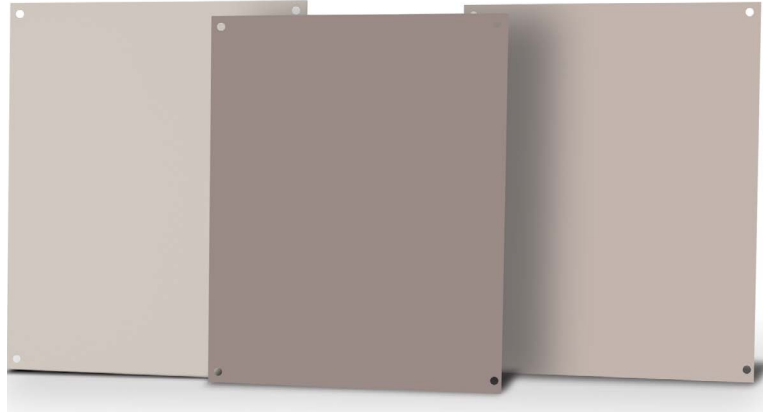
Fiberglass Enclosures – JIC Series – Extra Deep

Dimensions for JIC Series Extra Deep Enclosures



See our website: www.AutomationDirect.com for complete engineering drawings.

Subpanels for Premier, JIC and Classic Series Fiberglass Enclosures



Subpanel Specifications		
Subpanel	Material	Color/Finish
Carbon Steel	Carbon Steel	White polyester powder Finish
Aluminum	3003H14 Aluminum	Mill Finish
Stainless Steel	304 Stainless	Mill Finish
Fiberglass	FRP (Fiberglass reinforced panel)	Gray



Carbon steel subpanels

Fiberglass subpanels

Subpanel Part Number	Price	Subpanel Size HxWxD	Enclosure Nominal Size HxW	Wt (lb)
HW-MP604CS	\$5.75	4.88 x 2.88 x 0.075 [124 x 73 x .19]	6 x 4	0.3
HW-MP606CS	\$5.75	4.88 x 4.88 x 0.075 [124 x 124 x .19]	6 x 6	0.5
HW-MP706CS	\$7.50	6.00 x 4.88 x 0.075 [152 x 124 x .19]	7 x 6	0.6
HW-MP806CS	\$7.75	6.75 x 4.88 x 0.075 [152 x 124 x .19]	8 x 6	0.8
HW-MP808CS	\$10.00	6.88 x 6.88 x 0.075 [175 x 175 x .19]	8 x 8	0.8
HW-MP906CS	\$9.50	8.25 x 4.88 x 0.075 [175 x 124 x .19]	9 x 6	0.9
HW-MP1008CS	\$11.50	8.75 x 6.88 x 0.075 [225 x 175 x .19]	10 x 8	1.3
HW-MP1210CS	\$14.00	10.88 x 8.75 x 0.075 [276 x 225 x .19]	12 x 10	2.1
HW-MP1412CS	\$15.50	12.88 x 10.88 x 0.075 [327 x 276 x .19]	14 x 12	3.0
HW-MP1614CS	\$20.50	14.88 x 12.88 x 0.075 [378 x 327 x .19]	16 x 14	4.1
HW-MP1816CS	\$26.50	16.88 x 14.88 x 0.075 [429 x 378 x .19]	18 x 16	5.4
HW-MP2016CS	\$33.50	18.88 x 14.88 x 0.075 [479 x 378 x .19]	20 x 16	6.1
HW-MP2020CS	\$98.00	18.00 x 18.00 x 0.105 [457 x 457 x 2.7]	20 x 20	9.4
HW-MP2420CS	\$119.00	22.00 x 18.00 x 0.105 [558 x 457 x 2.7]	24 x 20	11
HW-MP2424CS	\$146.00	22.00 x 22.00 x 0.105 [558 x 558 x 2.7]	24 x 24	22

Note: Dimensions in inches [millimeters].

Subpanel Part Number	Price	Subpanel Size HxWxD	Enclosure Nominal Size HxW	Wt. (lb)
HW-MP604FG	\$5.75	4.88 x 2.88 x 0.13 [124 x 73 x 3.2]	6 x 4	0.1
HW-MP606FG	\$5.75	4.88 x 4.88 x 0.13 [124 x 124 x 3.2]	6 x 6	0.2
HW-MP806FG	\$7.75	6.88 x 4.88 x 0.13 [175 x 124 x 3.2]	8 x 6	0.3
HW-MP808FG	\$10.00	6.88 x 6.88 x 0.13 [175 x 175 x 3.2]	8 x 8	0.3
HW-MP1008FG	\$9.50	8.88 x 6.88 x 0.13 [225 x 175 x 3.2]	10 x 8	0.5
HW-MP1210FG	\$13.50	10.88 x 8.88 x 0.13 [276 x 225 x 3.2]	12 x 10	0.9
HW-MP1412FG	\$17.00	12.88 x 10.88 x 0.13 [327 x 276 x 3.2]	14 x 12	1.0
HW-MP1614FG	\$21.00	14.88 x 12.88 x 0.13 [378 x 327 x 3.2]	16 x 14	0.8
HW-MP1816FG	\$27.00	16.88 x 14.88 x 0.13 [429 x 378 x 3.2]	18 x 16	2.0
HW-MP2016FG	\$33.00	18.88 x 14.88 x 0.13 [479 x 378 x 3.2]	20 x 16	2.2
HW-MP2020FG	\$106.00	18.00 x 18.00 x 0.13 [457 x 457 x 3.2]	20 x 20	2.3
HW-MP2420FG	\$128.00	22.00 x 18.00 x 0.13 [558 x 457 x 3.2]	24 x 20	2.8
HW-MP2424FG	\$157.00	22.00 x 22.00 x 0.13 [558 x 558 x 3.2]	24 x 24	3.5

Note: Dimensions in inches [millimeters].

Enclosure Shipping Schedule

Same day	1-7 days	1 - 10 days	1-15 days
----------	----------	-------------	-----------

Color indicates shipping lead time in business days.

Subpanels for Premier, JIC and Classic Series Fiberglass Enclosures

Stainless steel subpanels

Subpanel Part Number	Price	Subpanel Size HxWxD	Enclosure Nominal Size HxW	Wt. (lb)
HW-MP604SS	\$7.75	4.88 x 2.88 x 0.064 [124 x 73 x 1.5]	6 x 4	0.3
HW-MP606SS	\$9.75	4.88 x 4.88 x 0.064 [124 x 124 x 1.5]	6 x 6	0.5
HW-MP806SS	\$12.50	6.88 x 4.88 x 0.064 [175 x 124 x 1.5]	8 x 6	0.8
HW-MP808SS	\$15.50	6.88 x 6.88 x 0.064 [175 x 175 x 1.5]	8 x 8	0.8
HW-MP1008SS	\$21.00	8.88 x 6.88 x 0.064 [225 x 175 x 1.5]	10 x 8	1.2
HW-MP1210SS	\$31.50	10.88 x 8.88 x 0.064 [276 x 225 x 1.5]	12 x 10	1.9
HW-MP1412SS	\$46.50	12.88 x 10.88 x 0.064 [327 x 276 x 1.5]	14 x 12	2.9
HW-MP1614SS	\$56.00	14.88 x 12.88 x 0.064 [378 x 327 x 1.5]	16 x 14	3.1
HW-MP1816SS	\$65.00	16.88 x 14.88 x 0.064 [429 x 378 x 1.5]	18 x 16	6.0
HW-MP2016SS	\$77.00	18.88 x 14.88 x 0.064 [479 x 378 x 1.5]	20 x 16	6.1

Note: Dimensions in inches [millimeters].



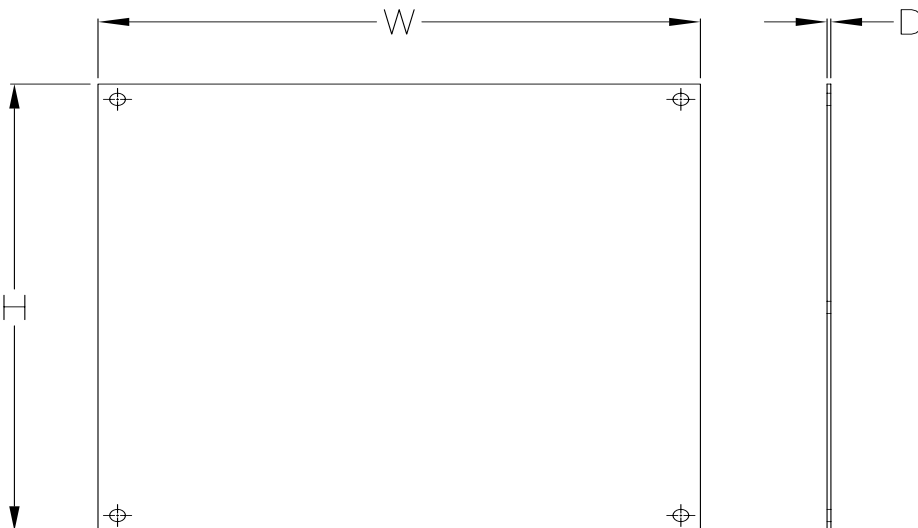
Aluminum subpanels

Subpanel Part Number	Price	Subpanel Size HxWxD	Enclosure Nominal Size HxW	Wt. (lb)
HW-MP604A	\$5.75	4.88 x 2.88 x 0.081 [124 x 73 x 2.0]	6 x 4	0.1
HW-MP606A	\$5.75	4.88 x 4.88 x 0.081 [124 x 124 x 2.0]	6 x 6	0.2
HW-MP806A	\$7.75	6.88 x 4.88 x 0.081 [175 x 124 x 2.0]	8 x 6	0.3
HW-MP1008A	\$11.50	8.88 x 6.88 x 0.081 [225 x 175 x 2.0]	10 x 8	0.5
HW-MP1210A	\$14.00	10.88 x 8.88 x 0.081 [276 x 225 x 2.0]	12 x 10	0.8
HW-MP1412A	\$15.50	12.88 x 10.88 x 0.081 [327 x 276 x 2.0]	14 x 12	1.1
HW-MP1614A	\$20.50	14.88 x 12.88 x 0.081 [378 x 327 x 2.0]	16 x 14	1.5
HW-MP1816A	\$26.50	16.88 x 14.88 x 0.081 [429 x 378 x 2.0]	18 x 16	2.5
HW-MP2016A	\$33.50	18.88 x 14.88 x 0.081 [479 x 378 x 2.0]	20 x 16	2.4
HW-MP2020AL	\$94.00	18.0 x 18.0 x 0.129 [457 x 457 x 3.3]	20 x 20	3.7
HW-MP2420AL	\$113.00	22.0 x 18.0 x 0.129 [558 x 457 x 3.3]	24 x 20	4.5
HW-MP2424AL	\$139.00	22.0 x 22.0 x 0.129 [558 x 558 x 3.3]	24 x 24	5.4

Note: Dimensions in inches [millimeters].

Enclosure Shipping Schedule		
Same day	1-7 days	1 - 10 days
Color indicates shipping lead time in business days.		

Dimensions



See our website: www.AutomationDirect.com for complete engineering drawings.

Enclosure Accessories - Hole Seals and Plugs



Hole Plugs for Non-Metal Enclosures

Designed to seal extra pushbutton holes, conduit openings, and knockout openings in Hubbell-Wiegman fiberglass enclosures from dirt, dust, oil, and water. Conduit hole sizes are nominal trade sizes, not actual hole sizes. (Example: 1 in. conduit actual diameter = 1.315 in.)



Hole Plugs	Price	Description	Nominal Hole Diameter Range in [mm]	Wt. [oz]
HW-FGHP	\$4.75	Hubbell-Wiegmann hole plug, fiber-reinforced plastic (FRP), closed-cell neoprene gasket, for 1/2 to 3/4-inch hole in non-metallic enclosure	0.50 - 0.81 [12.7 - 20.6]	2
HW-FGHP-PB-000	\$11.50	Hubbell-Wiegmann hole plug, fiberglass-reinforced plastic (FRP), closed-cell neoprene gasket. For use with 1/2in conduit holes in non-metallic enclosures.	0.88 [22.4]	2
HW-FGHP-PB-075	\$5.75	Hubbell-Wiegmann hole plug, fiber-reinforced plastic (FRP), closed-cell neoprene gasket, for 1/2- to 3/4-inch conduit holes and 22 or 30mm pushbutton holes in non-metallic enclosure	0.88 - 1.28 [22.4 - 32.5]	2
HW-FGHP-100-125	\$9.50	Hubbell-Wiegmann hole plug, fiber-reinforced plastic (FRP), closed-cell neoprene gasket, for 1 to 1-1/4 inch conduit holes in non-metallic enclosure	1.38 - 1.75 [35.1 - 44.5]	2
HW-FGHP-150-200*	\$11.50	Hubbell-Wiegmann hole plug, fiber-reinforced plastic (FRP), closed-cell neoprene gasket, for 1-1/2 to 2-inch conduit holes in non-metallic enclosure	2.00 - 2.56 [50.1 - 65.0]	2
HW-FGHP-200-275	\$21.50	Hubbell-Wiegmann hole plug, fiberglass-reinforced plastic (FRP), closed-cell neoprene gasket. For use with 2-1/2in conduit holes in non-metallic enclosures.	3.00 [76.2]	2
HW-FGHP-250-350	\$28.50	Hubbell-Wiegmann hole plug, fiberglass-reinforced plastic (FRP), closed-cell neoprene gasket. For use with 3in conduit holes in non-metallic enclosures.	3.62 [92.0]	2
HW-FGHP-300-425	\$37.00	Hubbell-Wiegmann hole plug, fiberglass-reinforced plastic (FRP), closed-cell neoprene gasket. For use with 3-1/2in conduit holes in non-metallic enclosures.	4.12 [104.7]	2
HW-FGHP-350-500	\$47.50	Hubbell-Wiegmann hole plug, fiberglass-reinforced plastic (FRP), closed-cell neoprene gasket. For use with 4in conduit holes in non-metallic enclosures.	4.62 [117.4]	2

**Note: Will maintain NEMA 4X rating.*

Enclosure Shipping Schedule			
Same day	1-7 days	1-10 days	1 - 15 days

Color indicates shipping lead time in business days.

Vents and Louvers for Non-Metallic Enclosures



Drain/Breather Vents



HW-DVKIT



HW-4XBKIT



HW-4XDVKIT

Part Number	Price	Description	Wt. (oz)
HW-DV	\$9.75	Hubbell-Wiegmann single drain vent, PVC. For use on non-metallic enclosures. Includes drain vent and silicone adhesive/sealant.	2
HW-DVKIT	\$14.00	Hubbell-Wiegmann single drain vent kit, PVC. Includes drain vent and silicone adhesive/sealant.	2
HW-4XBKIT	\$48.00	Hubbell-Wiegmann single breather vent kit allows enclosure to "breathe" while maintaining UL Type 4X enclosure rating.	4.8
HW-4XDVKIT	\$20.00	Hubbell-Wiegmann single drain vent kit properly drains unwanted moisture while maintaining UL Type 4X enclosure rating.	3.2

Enclosure Shipping Schedule	
1-7 days	1 - 15 days
Color indicates shipping lead time in business days.	

Louver Plate



HW-LPKIT

Part Number	Price	Description	Wt.
HW-LP	\$14.00	Louver plate, for ventilation in non-metallic enclosure, polypropylene, 4.5 inch wide x 4.0 inch high. For 3 inch x 3 inch cutout.	2 oz
HW-LPKIT	\$30.50	Louver plate kit, for ventilation in non-metallic enclosure. Includes 4.5 inch wide x 4.0 inch high polypropylene louver plate, rivets and silicone adhesive/sealant. For 3 inch x 3 inch cutout.	2 oz