

# Fiberglass Enclosures – JIC Series – Raised Cover

## Raised Screw Cover



**HW-RHJ121006SC**

### Construction

- Hot compression molded fiberglass reinforced polyester (thermoset)
- Poured polyurethane seamless gasket provides watertight, dust-tight environmental seal
- 304 stainless steel used on all external hardware
- Lift-off extended-depth cover with four screws
- Stainless steel beaded chain for cover retention
- Rounded edges, minimal protrusions or exposed pocket area for accumulation of dust or debris
- Molded-in flange for easy mounting
- Raised bosses with brass inserts accepting 10-32 screws for optional panel mounting
- Workable material cuts, drills, punches and saws with ease and accuracy
- Non-conductive, UV resistant
- High impact resistance - 216 in/lb per UL746C
- Smooth surface, no color variations, swirls or color pockets, no voids
- Submersible, non-corrosive environmental design
- Color: Gray

### Listings

- UL/cUL 50/508, Types 1, 3R, 4X, 6P, 12 [UL File E64791]
- CSA Certified, Types 1, 3R, 4X, 6P, 12 [CSA File 222873]
- NEMA Standard 250, Types 1, 3, 4x, 6P, 12
- Temperature Range: -76°F to 274°F [-60°C to 134°C]
- Flammability Rating: UL94-5V
- Non-flame propagating
- Flame Spread classification per NFPA No. 101: Class A [1]

### Enclosure Shipping Schedule

Same day	1 - 7 days	1-10 days	1 - 15 days
----------	------------	-----------	-------------

Color indicates shipping lead time in business days.

JIC Series Fiberglass Enclosures - Raised Screw Cover							
Enclosure Part Number	Price	Enclosure Overall Size HxWxD	Wt. [lb]	Carbon Steel Subpanel	Fiberglass Subpanel	Stainless Steel Subpanel	Aluminum Subpanel
<b>HW-RHJ60405SC</b>	\$65.00	7.47 x 5.47 x 6.21 [190 x 139 x 158]	2.1	<b>HW-MP604CS</b>	<b>HW-MP604FG</b>	<b>HW-MP604SS</b>	<b>HW-MP604A</b>
<b>HW-RHJ60606SC</b>	\$69.00	7.50 x 7.53 x 6.32 [191 x 191 x 161]	2.6	<b>HW-MP606CS</b>	<b>HW-MP606FG</b>	<b>HW-MP606SS</b>	<b>HW-MP606A</b>
<b>HW-RHJ80606SC</b>	\$78.00	9.63 x 7.52 x 6.20 [245 x 191 x 158]	3.1	<b>HW-MP806CS</b>	<b>HW-MP806FG</b>	<b>HW-MP806SS</b>	<b>HW-MP806A</b>
<b>HW-RHJ100806SC</b>	\$87.00	11.63 x 9.37 x 6.58 [295 x 238 x 167]	4.5	<b>HW-MP1008CS</b>	<b>HW-MP1008FG</b>	<b>HW-MP1008SS</b>	<b>HW-MP1008A</b>
<b>HW-RHJ121006SC</b>	\$107.00	13.56 x 11.43 x 6.58 [344 x 291 x 167]	5.7	<b>HW-MP1210CS</b>	<b>HW-MP1210FG</b>	<b>HW-MP1210SS</b>	<b>HW-MP1210A</b>
<b>HW-RHJ141207SC</b>	\$116.00	15.50 x 13.38 x 7.69 [394 x 340 x 195]	9.1	<b>HW-MP1412CS</b>	<b>HW-MP1412FG</b>	<b>HW-MP1412SS</b>	<b>HW-MP1412A</b>
<b>HW-RHJ161407SC</b>	\$138.00	17.53 x 15.43 x 7.68 [445 x 392 x 195]	9.2	<b>HW-MP1614CS</b>	<b>HW-MP1614FG</b>	<b>HW-MP1614SS</b>	<b>HW-MP1614A</b>

**Notes:** Subpanels must be ordered separately.  
Dimensions in inches [millimeters].

# Fiberglass Enclosures – JIC Series – Raised Cover



## Raised Hinged Screw Cover



**HW-RHJ121006CHSC**

### Construction

- Hot compression molded fiberglass reinforced polyester (thermoset)
- Poured polyurethane seamless gasket provides watertight, dust-tight environmental seal
- 304 stainless steel used on all external hardware
- Full length, stainless steel, hinged, extended-depth cover with two screws
- Rounded edges, minimal protrusions or exposed pocket area for accumulation of dust or debris
- Molded-in flange for easy mounting
- Raised bosses with brass inserts accepting 10-32 screws for optional panel mounting
- Workable material cuts, drills, punches and saws with ease and accuracy
- Full 180° door opening
- Non-conductive, UV resistant
- High impact resistance - 216 in/lb per UL746C
- Smooth surface, no color variations, swirls or color pockets, no voids
- Submersible, non-corrosive environmental design
- Color: Gray

### Listings

- UL/cUL 50/508, Types 1, 3R, 4X, 6P, 12 [UL File E64791]
- CSA Certified, Types 1, 3R, 4X, 6P, 12 [CSA File 222873]
- NEMA Standard 250 Types 1, 3R, 4X, 6P, 12
- Temperature Range: -76°F to 274°F [-60°C to 134°C]
- Flammability Rating: UL94-5V
- Non-flame propagating
- Flame Spread classification per NFPA No. 101: Class A [1]



Enclosure Shipping Schedule			
Same day	1 - 7 days	1-10 days	1 - 15 days

Color indicates shipping lead time in business days.

JIC Series Fiberglass Enclosures - Raised Hinged Screw Cover							
Enclosure Part Number	Price	Enclosure Overall Size HxWxD	Wt. [lb]	Carbon Steel Subpanel	Fiberglass Subpanel	Stainless Steel Subpanel	Aluminum Subpanel
HW-RHJ60405CHSC	\$69.00	7.47 x 5.47 x 6.21 [190 x 139 x 158]	2.2	HW-MP604CS	HW-MP604FG	HW-MP604SS	HW-MP604A
HW-RHJ60606CHSC	\$78.00	7.50 x 7.53 x 6.32 [191 x 191 x 161]	2.6	HW-MP606CS	HW-MP606FG	HW-MP606SS	HW-MP606A
HW-RHJ80606CHSC	\$82.00	9.63 x 7.52 x 6.20 [245 x 191 x 158]	3.1	HW-MP806CS	HW-MP806FG	HW-MP806SS	HW-MP806A
HW-RHJ100806CHSC	\$97.00	11.63 x 9.37 x 6.58 [295 x 238 x 167]	4.5	HW-MP1008CS	HW-MP1008FG	HW-MP1008SS	HW-MP1008A
HW-RHJ121006CHSC	\$112.00	13.56 x 11.43 x 6.58 [344 x 291 x 167]	5.9	HW-MP1210CS	HW-MP1210FG	HW-MP1210SS	HW-MP1210A
HW-RHJ141207CHSC	\$124.00	15.50 x 13.38 x 7.69 [394 x 340 x 195]	8.9	HW-MP1410CS	HW-MP1410FG	HW-MP1410SS	HW-MP1410A
HW-RHJ161407CHSC	\$146.00	17.53 x 15.43 x 7.68 [445 x 392 x 195]	10.6	HW-MP1614CS	HW-MP1614FG	HW-MP1614SS	HW-MP1614A
HW-RHJ181610CHSC	\$190.00	19.63 x 17.48 x 10.63 [499 x 444 x 270]	17.2	HW-MP1816CS	HW-MP1816FG	HW-MP1816SS	HW-MP1816A
HW-RHJ201610CHSC	\$337.00	22.00 x 17.56 x 10.63 [559 x 446 x 270]	18.3	HW-MP2016CS	HW-MP2016FG	HW-MP2016SS	HW-MP2016A

**Notes:** Subpanels must be ordered separately.  
Dimensions in inches [millimeters].

# Fiberglass Enclosures – JIC Series – Raised Cover



## Raised Single Door with Twist-Lock Latches



**HW-RHJ121006CHTL**

### Construction

- Hot compression molded fiberglass reinforced polyester (thermoset)
- Poured polyurethane seamless gasket provides watertight, dust-tight environmental seal
- 304 stainless steel used on all external hardware
- Rounded edges, minimal protrusions or exposed pocket area for accumulation of dust or debris
- Molded-in flange for easy mounting
- Raised bosses with brass inserts accepting 10-32 screws for optional panel mounting
- Workable material cuts, drills, punches and saws with ease and accuracy
- Full length, stainless steel, hinged, extended-depth cover with twist-lock latches
- Full 180° door opening
- Non-conductive, UV resistant
- High impact resistance - 216 in/lb per UL746C
- Smooth surface, no color variations, swirls or color pockets, no voids
- Submersible, non-corrosive environmental design
- Color: Gray

### Listings

- UL/cUL 50/508, Types 1, 3R, 4X, 6P, 12 [UL File E64791]
- CSA Certified, Types 1, 3, 4X, 6P, 12 [CSA File 222873]
- NEMA Standard 250, Types 1, 3R, 4X, 6P, 12
- Temperature Range: -76°F to 274°F [-60°C to 134°C]
- Flammability Rating: UL94-5V
- Non-flame propagating
- Flame Spread classification per NFPA No. 101: Class A [1]



Enclosure Shipping Schedule		
Same day	1 - 7 days	1 - 10 days
Color indicates shipping lead time in business days.		

JIC Series Fiberglass Enclosures - Raised Single Door with Twist-Lock Latches								
Enclosure Part Number	Price	Enclosure Overall Size HxWxD	Wt. [lb]	No. Latches	Carbon Steel Subpanel	Fiberglass Subpanel	Stainless Steel Subpanel	Aluminum Subpanel
<b>HW-RHJ60405CHTL</b>	\$97.00	7.47 x 5.47 x 6.21 [190 x 139 x 158]	2.3	1	<b>HW-MP604CS</b>	<b>HW-MP604FG</b>	<b>HW-MP604SS</b>	<b>HW-MP604A</b>
<b>HW-RHJ60606CHTL</b>	\$101.00	7.50 x 7.53 x 6.32 [191 x 191 x 161]	3.3	1	<b>HW-MP606CS</b>	<b>HW-MP606FG</b>	<b>HW-MP606SS</b>	<b>HW-MP606A</b>
<b>HW-RHJ80606CHTL</b>	\$102.00	9.63 x 7.52 x 6.20 [245 x 191 x 158]	3.3	1	<b>HW-MP806CS</b>	<b>HW-MP806FG</b>	<b>HW-MP806SS</b>	<b>HW-MP806A</b>
<b>HW-RHJ100806CHTL</b>	\$111.00	11.63 x 9.37 x 6.58 [295 x 238 x 167]	4.6	2	<b>HW-MP1008CS</b>	<b>HW-MP1008FG</b>	<b>HW-MP1008SS</b>	<b>HW-MP1008A</b>
<b>HW-RHJ121006CHTL</b>	\$128.00	13.56 x 11.43 x 6.58 [344 x 291 x 167]	6.0	2	<b>HW-MP1210CS</b>	<b>HW-MP1210FG</b>	<b>HW-MP1210SS</b>	<b>HW-MP1210A</b>
<b>HW-RHJ141207CHTL</b>	\$159.00	15.50 x 13.38 x 7.69 [394 x 340 x 195]	9.1	2	<b>HW-MP1412CS</b>	<b>HW-MP1412FG</b>	<b>HW-MP1412SS</b>	<b>HW-MP1412A</b>
<b>HW-RHJ161407CHTL</b>	\$169.00	17.53 x 15.43 x 7.68 [445 x 392 x 195]	10.8	2	<b>HW-MP1614CS</b>	<b>HW-MP1614FG</b>	<b>HW-MP1614SS</b>	<b>HW-MP1614A</b>
<b>HW-RHJ181610CHTL</b>	\$219.00	19.63 x 17.48 x 10.63 [499 x 444 x 270]	17.2	2	<b>HW-MP1816CS</b>	<b>HW-MP1816FG</b>	<b>HW-MP1816SS</b>	<b>HW-MP1816A</b>
<b>HW-RHJ201610CHTL</b>	\$378.00	22.00 x 17.56 x 10.63 [559 x 446 x 270]	20.2	2	<b>HW-MP2016CS</b>	<b>HW-MP2016FG</b>	<b>HW-MP2016SS</b>	<b>HW-MP2016A</b>

**Notes:** Subpanels must be ordered separately.  
Dimensions in inches [millimeters].

# Fiberglass Enclosures – JIC Series – Raised Cover



## Raised Single Door with Quick-Release Latches



**HW-RHJ121006CHQR**

### Construction

- Hot compression molded fiberglass reinforced polyester (thermoset)
- Poured polyurethane seamless gasket provides watertight, dust-tight environmental seal
- 304 stainless steel used on all external hardware
- Rounded edges, minimal protrusions or exposed pocket area for accumulation of dust or debris
- Molded-in flange for easy mounting
- Raised bosses with brass inserts accepting 10-32 screws for optional panel mounting
- Workable material cuts, drills, punches and saws with ease and accuracy
- Full length, stainless steel, hinged extended-depth cover with padlockable, quick-release latches
- Full 180° door opening
- Non-conductive, UV resistant
- High impact resistance - 216 in/lb per UL746C
- Smooth surface, no color variations, swirls or color pockets, no voids
- Submersible, non-corrosive environmental design
- Color: Gray

### Listings

- UL/cUL 50/508, Types 1, 3R, 4X, 6P, 12 [UL File E64791]
- CSA Certified, Types 1, 3R, 4X, 6P, 12 [CSA File 222873]
- NEMA Standard 250, Types 1, 3R, 4X, 6P, 12
- Temperature Range: -76°F to 274°F [-60°C to 134°C]
- Flammability Rating: UL94-5V
- Non-flame propagating
- Flame Spread classification per NFPA No. 101: Class A [1]



Enclosure Shipping Schedule			
Same day	1 - 7 days	1-10 days	1 - 15 days
Color indicates shipping lead time in business days.			

JIC Series Fiberglass Enclosures - Raised Single Door with Quick-Release Latches								
Enclosure Part Number	Price	Enclosure Overall Size HxWxD	Wt. [lb]	No. Latches	Carbon Steel Subpanel	Fiberglass Subpanel	Stainless Steel Subpanel	Aluminum Subpanel
<b>HW-RHJ60405CHQR</b>	\$95.00	7.47 x 5.47 x 6.21 [190 x 139 x 158]	2.3	1	<b>HW-MP604CS</b>	<b>HW-MP604FG</b>	<b>HW-MP604SS</b>	<b>HW-MP604A</b>
<b>HW-RHJ60606CHQR</b>	\$98.00	7.50 x 7.53 x 6.32 [191 x 191 x 161]	2.7	1	<b>HW-MP606CS</b>	<b>HW-MP606FG</b>	<b>HW-MP606SS</b>	<b>HW-MP606A</b>
<b>HW-RHJ80606CHQR</b>	\$99.00	9.63 x 7.52 x 6.20 [245 x 191 x 158]	3.3	1	<b>HW-MP806CS</b>	<b>HW-MP806FG</b>	<b>HW-MP806SS</b>	<b>HW-MP806A</b>
<b>HW-RHJ80806CHQR</b>	\$104.00	9.56 x 9.38 x 6.25 [243 x 238 x 159]	3.8	1	<b>HW-MP808CS</b>	<b>HW-MP808FG</b>	<b>HW-MP808SS</b>	-
<b>HW-RHJ100806CHQR</b>	\$108.00	11.63 x 9.37 x 6.58 [295 x 238 x 167]	4.7	2	<b>HW-MP1008CS</b>	<b>HW-MP1008FG</b>	<b>HW-MP1008SS</b>	<b>HW-MP1008A</b>
<b>HW-RHJ121006CHQR</b>	\$124.00	13.56 x 11.43 x 6.58 [344 x 290 x 167]	5.9	2	<b>HW-MP1210CS</b>	<b>HW-MP1210FG</b>	<b>HW-MP1210SS</b>	<b>HW-MP1210A</b>
<b>HW-RHJ141207CHQR</b>	\$155.00	15.50 x 13.38 x 7.69 [394 x 340 x 195]	8.8	2	<b>HW-MP1412CS</b>	<b>HW-MP1412FG</b>	<b>HW-MP1412SS</b>	<b>HW-MP1412A</b>
<b>HW-RHJ161407CHQR</b>	\$164.00	17.53 x 15.43 x 7.68 [445 x 392 x 195]	10.5	2	<b>HW-MP1614CS</b>	<b>HW-MP1614FG</b>	<b>HW-MP1614SS</b>	<b>HW-MP1614A</b>
<b>HW-RHJ181610CHQR</b>	\$213.00	19.63 x 17.48 x 10.63 [499 x 444 x 270]	17.2	2	<b>HW-MP1816CS</b>	<b>HW-MP1816FG</b>	<b>HW-MP1816SS</b>	<b>HW-MP1816A</b>
<b>HW-RHJ201610CHQR</b>	\$350.00	22.00 x 17.56 x 10.63 [559 x 446 x 270]	18.7	2	<b>HW-MP2016CS</b>	<b>HW-MP2016FG</b>	<b>HW-MP2016SS</b>	<b>HW-MP2016A</b>

**Notes:** Subpanels must be ordered separately. Dimensions in inches [millimeters].

# Fiberglass Enclosures – JIC Series – Raised Cover



## Raised Single Door with Acrylic Window and Twist-Lock Latches



**HW-RHJ141207CHTLW**

### Construction

- Hot compression molded fiberglass reinforced polyester (thermoset)
- Poured polyurethane seamless gasket provides watertight, dust-tight environmental seal
- 304 stainless steel used on all external hardware
- Twist-lock latches
- Rounded edges, minimal protrusions or exposed pocket area for accumulation of dust or debris
- Molded-in flange for easy mounting
- Raised bosses with brass inserts accepting 10-32 screws for optional panel mounting
- Workable material cuts, drills, punches and saws with ease and accuracy
- Full length, stainless steel, hinged, extended-depth door with twist-lock latches
- Full 180° door opening
- Non-conductive, UV resistant
- High impact resistance - 216 in/lb per UL746C
- Smooth surface, no color variations, swirls or color pockets, no voids
- Scratch- and abrasion-resistant UVA acrylic flush-bonded window
- Submersible, non-corrosive environmental design
- Color: Gray

### Listings

- UL/cUL 50/508, Types 1, 3R, 4X, 6P, 12 [UL File E64791]
- CSA Certified, Types 1, 3R, 4X, 6P, 12 [CSA File 222873]
- NEMA Standard 250, Types 1, 3R, 4X, 6P, 12
- Temperature Range: -76°F to 274°F [-60°C to 134°C]
- Temperature Range window: -26°F to 170°F [-32°C to 76°C]
- Flammability Rating: UL94-5V
- Flammability Rating window: UL94V-HB
- Non-flame propagating
- Flame Spread classification per NFPA No. 101: Class A [1]



### Enclosure Shipping Schedule

Same day	1 -10 days
Color indicates shipping lead time in business days.	

### JIC Series Fiberglass Enclosures - Raised Single Door with Acrylic Window and Twist-Lock Latches

Enclosure Part Number	Price	Enclosure Overall Size HxWxD	Wt. [lb]	No. Latches	Carbon Steel Subpanel	Fiberglass Subpanel	Stainless Steel Subpanel	Aluminum Subpanel
<b>HW-RHJ100806CHTLW</b>	\$181.00	11.63 x 9.37 x 6.58 (295 x 238 x 167)	4.9	2	<b>HW-MP1008CS</b>	<b>HW-MP1008FG</b>	<b>HW-MP1008SS</b>	<b>HW-MP1008A</b>
<b>HW-RHJ121006CHTLW</b>	\$202.00	13.56 x 11.43 x 6.58 (344 x 291 x 167)	5.7	2	<b>HW-MP1210CS</b>	<b>HW-MP1210FG</b>	<b>HW-MP1210SS</b>	<b>HW-MP1210A</b>
<b>HW-RHJ141207CHTLW</b>	\$279.00	15.50 x 13.38 x 7.69 (394 x 340 x 195)	9.2	2	<b>HW-MP1412CS</b>	<b>HW-MP1412FG</b>	<b>HW-MP1412SS</b>	<b>HW-MP1412A</b>
<b>HW-RHJ161407CHTLW</b>	\$306.00	17.53 x 15.43 x 7.68 (445 x 392 x 195)	9.7	2	<b>HW-MP1614CS</b>	<b>HW-MP1614FG</b>	<b>HW-MP1614SS</b>	<b>HW-MP1614A</b>
<b>HW-RHJ181610CHTLW</b>	\$376.00	19.63 x 17.48 x 10.63 (499 x 444 x 270)	17.0	2	<b>HW-MP1816CS</b>	<b>HW-MP1816FG</b>	<b>HW-MP1816SS</b>	<b>HW-MP1816A</b>

**Notes:** Subpanels must be ordered separately.  
Dimensions in inches [millimeters].



# Fiberglass Enclosures – JIC Series – Raised Cover



## Raised Single Door with Acrylic Window and Quick-Release Latches



**HW-RHJ141207CHQRW**

### Construction

- Hot compression molded fiberglass reinforced polyester (thermoset)
- Poured polyurethane seamless gasket provides watertight, dust-tight environmental seal
- 304 stainless steel used on all external hardware
- Rounded edges, minimal protrusions or exposed pocket area for accumulation of dust or debris
- Molded-in flange for easy mounting
- Raised bosses with brass inserts accepting 10-32 screws for optional panel mounting
- Workable material cuts, drills, punches and saws with ease and accuracy
- Full length, stainless steel, hinged, extended-depth door with padlockable, quick-release latches
- Scratch- and abrasion-resistant UVA acrylic flush-bonded window
- Full 180° door opening
- Non-conductive, UV resistant
- High impact resistance - 216 in/lb per UL746C
- Smooth surface, no color variations, swirls or color pockets, no voids
- Submersible, non-corrosive environmental design
- Color: Gray

### Listings

- UL/cUL 50/508, Types 1, 3R, 4X, 6P, 12 [UL File E64791]
- CSA Certified, Types 1, 3, 4X, 6P, 12 [CSA File 222873]
- NEMA Standard 250, Types 1, 3R, 4X, 6P, 12
- Temperature Range: -76°F to 274°F [-60°C to 134°C]
- Window Temperature Range: -26°F to 170°F [-32°C to 76°C]
- Flammability Rating: UL94-5V
- Window Flammability: UL94V-HB
- Non-flame propagating
- Flame Spread classification per NFPA No. 101: Class A [1]



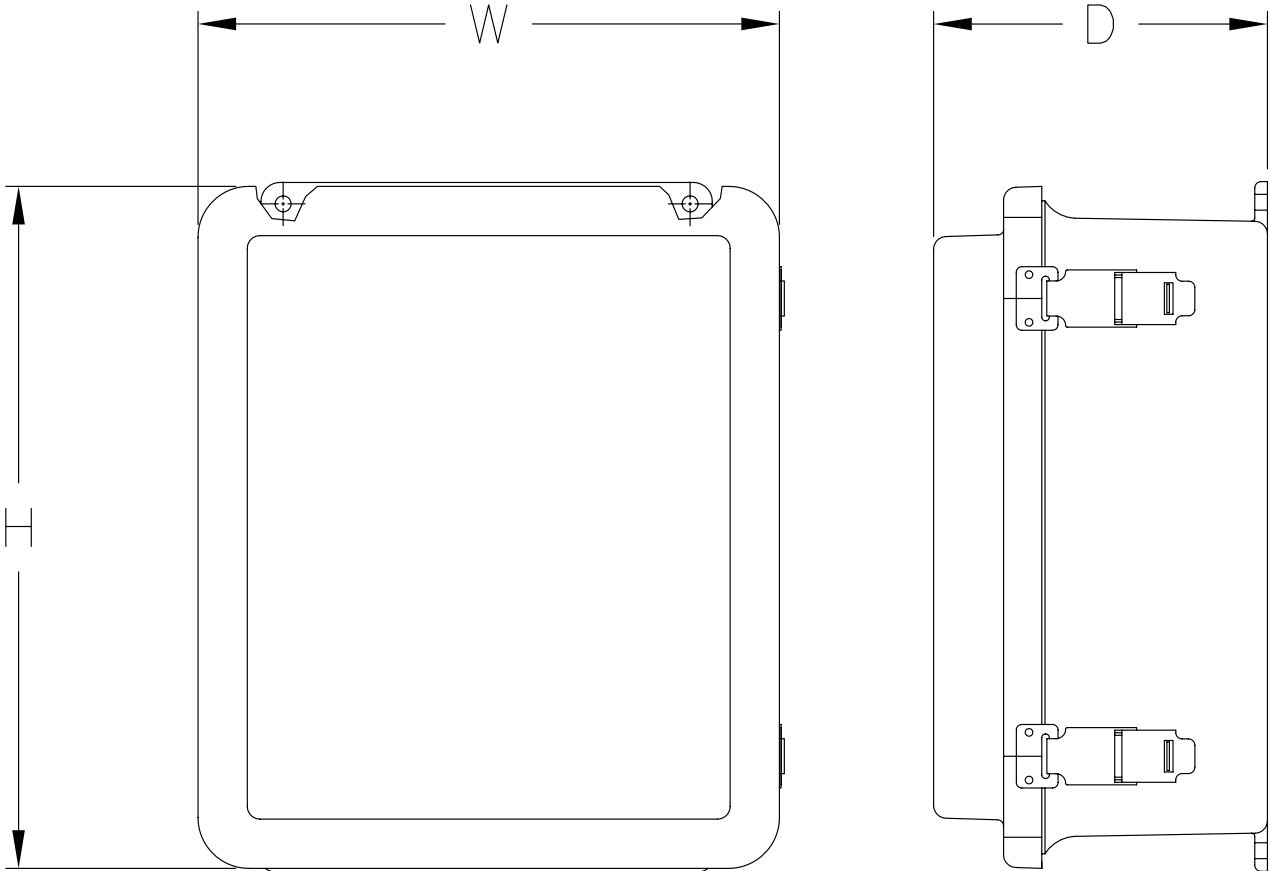
Enclosure Shipping Schedule	
Same day	1 -10 days
Color indicates shipping lead time in business days.	

JIC Series Fiberglass Enclosures - Raised Single Door with Acrylic Window and Quick-Release Latches								
Enclosure Part Number	Price	Enclosure Overall Size HxWxD	Wt. [lb]	No. Latches	Carbon Steel Subpanel	Fiberglass Subpanel	Stainless Steel Subpanel	Aluminum Subpanel
<b>HW-RHJ60405CHQRW</b>	\$141.00	7.47 x 5.47 x 6.21 [190 x 139 x 158]	2.1	1	<b>HW-MP604CS</b>	<b>HW-MP604FG</b>	<b>HW-MP604SS</b>	<b>HW-MP604A</b>
<b>HW-RHJ60606CHQRW</b>	\$154.00	7.50 x 7.53 x 6.32 [191 x 191 x 161]	2.4	1	<b>HW-MP606CS</b>	<b>HW-MP606FG</b>	<b>HW-MP606SS</b>	<b>HW-MP606A</b>
<b>HW-RHJ80606CHQRW</b>	\$156.00	9.63 x 7.52 x 6.20 [245 x 191 x 158]	3.3	1	<b>HW-MP806CS</b>	<b>HW-MP806FG</b>	<b>HW-MP806SS</b>	<b>HW-MP806A</b>
<b>HW-RHJ100806CHQRW</b>	\$178.00	11.63 x 9.37 x 6.58 [295 x 238 x 167]	5.0	2	<b>HW-MP1008CS</b>	<b>HW-MP1008FG</b>	<b>HW-MP1008SS</b>	<b>HW-MP1008A</b>
<b>HW-RHJ121006CHQRW</b>	\$207.00	13.56 x 11.43 x 6.58 [344 x 291 x 167]	6.1	2	<b>HW-MP1210CS</b>	<b>HW-MP1210FG</b>	<b>HW-MP1210SS</b>	<b>HW-MP1210A</b>
<b>HW-RHJ141207CHQRW</b>	\$285.00	15.50 x 13.38 x 7.69 [394 x 340 x 195]	9.3	2	<b>HW-MP1412CS</b>	<b>HW-MP1412FG</b>	<b>HW-MP1412SS</b>	<b>HW-MP1412A</b>
<b>HW-RHJ161407CHQRW</b>	\$325.00	17.53 x 15.43 x 7.68 [445 x 392 x 195]	10.9	2	<b>HW-MP1614CS</b>	<b>HW-MP1614FG</b>	<b>HW-MP1614SS</b>	<b>HW-MP1614A</b>
<b>HW-RHJ181610CHQRW</b>	\$384.00	19.63 x 17.48 x 10.63 [499 x 444 x 270]	17.7	2	<b>HW-MP1816CS</b>	<b>HW-MP1816FG</b>	<b>HW-MP1816SS</b>	<b>HW-MP1816A</b>
<b>HW-RHJ201610CHQRW</b>	\$605.00	22.00 x 17.56 x 10.63 [559 x 444 x 270]	18.6	2	<b>HW-MP2016CS</b>	<b>HW-MP2016FG</b>	<b>HW-MP2016SS</b>	<b>HW-MP2016A</b>

**Notes:** Subpanels must be ordered separately.  
Dimensions in inches [millimeters].

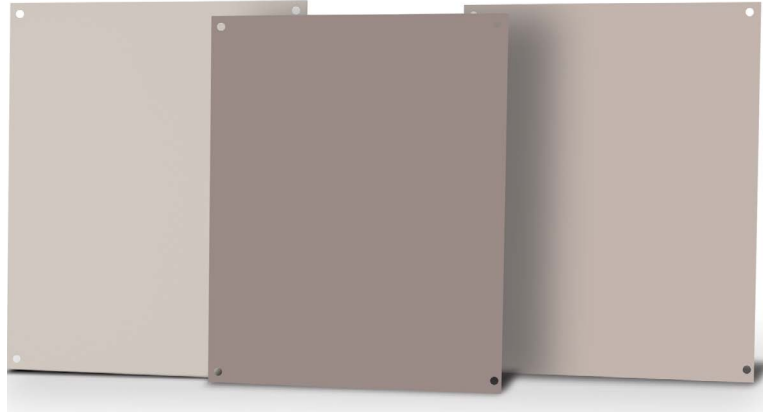
# Fiberglass Enclosures – JIC Series – Raised Cover

## Dimensions for Raised Cover JIC Enclosures



See our website: [www.AutomationDirect.com](http://www.AutomationDirect.com) for complete engineering drawings.

# Subpanels for Premier, JIC and Classic Series Fiberglass Enclosures



Subpanel Specifications		
Subpanel	Material	Color/Finish
Carbon Steel	Carbon Steel	White polyester powder Finish
Aluminum	3003H14 Aluminum	Mill Finish
Stainless Steel	304 Stainless	Mill Finish
Fiberglass	FRP (Fiberglass reinforced panel)	Gray



## Carbon steel subpanels

## Fiberglass subpanels

Subpanel Part Number	Price	Subpanel Size HxWxD	Enclosure Nominal Size HxW	Wt (lb)
HW-MP604CS	\$5.75	4.88 x 2.88 x 0.075 [124 x 73 x .19]	6 x 4	0.3
HW-MP606CS	\$5.75	4.88 x 4.88 x 0.075 [124 x 124 x .19]	6 x 6	0.5
HW-MP706CS	\$7.50	6.00 x 4.88 x 0.075 [152 x 124 x .19]	7 x 6	0.6
HW-MP806CS	\$7.75	6.75 x 4.88 x 0.075 [152 x 124 x .19]	8 x 6	0.8
HW-MP808CS	\$10.00	6.88 x 6.88 x 0.075 [175 x 175 x .19]	8 x 8	0.8
HW-MP906CS	\$9.50	8.25 x 4.88 x 0.075 [175 x 124 x .19]	9 x 6	0.9
HW-MP1008CS	\$11.50	8.75 x 6.88 x 0.075 [225 x 175 x .19]	10 x 8	1.3
HW-MP1210CS	\$14.00	10.88 x 8.75 x 0.075 [276 x 225 x .19]	12 x 10	2.1
HW-MP1412CS	\$15.50	12.88 x 10.88 x 0.075 [327 x 276 x .19]	14 x 12	3.0
HW-MP1614CS	\$20.50	14.88 x 12.88 x 0.075 [378 x 327 x .19]	16 x 14	4.1
HW-MP1816CS	\$26.50	16.88 x 14.88 x 0.075 [429 x 378 x .19]	18 x 16	5.4
HW-MP2016CS	\$33.50	18.88 x 14.88 x 0.075 [479 x 378 x .19]	20 x 16	6.1
HW-MP2020CS	\$98.00	18.00 x 18.00 x 0.105 [457 x 457 x 2.7]	20 x 20	9.4
HW-MP2420CS	\$119.00	22.00 x 18.00 x 0.105 [558 x 457 x 2.7]	24 x 20	11
HW-MP2424CS	\$146.00	22.00 x 22.00 x 0.105 [558 x 558 x 2.7]	24 x 24	22

Note: Dimensions in inches [millimeters].

Subpanel Part Number	Price	Subpanel Size HxWxD	Enclosure Nominal Size HxW	Wt. (lb)
HW-MP604FG	\$5.75	4.88 x 2.88 x 0.13 [124 x 73 x 3.2]	6 x 4	0.1
HW-MP606FG	\$5.75	4.88 x 4.88 x 0.13 [124 x 124 x 3.2]	6 x 6	0.2
HW-MP806FG	\$7.75	6.88 x 4.88 x 0.13 [175 x 124 x 3.2]	8 x 6	0.3
HW-MP808FG	\$10.00	6.88 x 6.88 x 0.13 [175 x 175 x 3.2]	8 x 8	0.3
HW-MP1008FG	\$9.50	8.88 x 6.88 x 0.13 [225 x 175 x 3.2]	10 x 8	0.5
HW-MP1210FG	\$13.50	10.88 x 8.88 x 0.13 [276 x 225 x 3.2]	12 x 10	0.9
HW-MP1412FG	\$17.00	12.88 x 10.88 x 0.13 [327 x 276 x 3.2]	14 x 12	1.0
HW-MP1614FG	\$21.00	14.88 x 12.88 x 0.13 [378 x 327 x 3.2]	16 x 14	0.8
HW-MP1816FG	\$27.00	16.88 x 14.88 x 0.13 [429 x 378 x 3.2]	18 x 16	2.0
HW-MP2016FG	\$33.00	18.88 x 14.88 x 0.13 [479 x 378 x 3.2]	20 x 16	2.2
HW-MP2020FG	\$106.00	18.00 x 18.00 x 0.13 [457 x 457 x 3.2]	20 x 20	2.3
HW-MP2420FG	\$128.00	22.00 x 18.00 x 0.13 [558 x 457 x 3.2]	24 x 20	2.8
HW-MP2424FG	\$157.00	22.00 x 22.00 x 0.13 [558 x 558 x 3.2]	24 x 24	3.5

Note: Dimensions in inches [millimeters].

### Enclosure Shipping Schedule

Same day	1-7 days	1 - 10 days	1-15 days
----------	----------	-------------	-----------

Color indicates shipping lead time in business days.



# Subpanels for Premier, JIC and Classic Series Fiberglass Enclosures

## Stainless steel subpanels

Subpanel Part Number	Price	Subpanel Size HxWxD	Enclosure Nominal Size HxW	Wt. (lb)
<b>HW-MP604SS</b>	\$7.75	4.88 x 2.88 x 0.064 [124 x 73 x 1.5]	6 x 4	0.3
<b>HW-MP606SS</b>	\$9.75	4.88 x 4.88 x 0.064 [124 x 124 x 1.5]	6 x 6	0.5
<b>HW-MP806SS</b>	\$12.50	6.88 x 4.88 x 0.064 [175 x 124 x 1.5]	8 x 6	0.8
<b>HW-MP808SS</b>	\$15.50	6.88 x 6.88 x 0.064 [175 x 175 x 1.5]	8 x 8	0.8
<b>HW-MP1008SS</b>	\$21.00	8.88 x 6.88 x 0.064 [225 x 175 x 1.5]	10 x 8	1.2
<b>HW-MP1210SS</b>	\$31.50	10.88 x 8.88 x 0.064 [276 x 225 x 1.5]	12 x 10	1.9
<b>HW-MP1412SS</b>	\$46.50	12.88 x 10.88 x 0.064 [327 x 276 x 1.5]	14 x 12	2.9
<b>HW-MP1614SS</b>	\$56.00	14.88 x 12.88 x 0.064 [378 x 327 x 1.5]	16 x 14	3.1
<b>HW-MP1816SS</b>	\$65.00	16.88 x 14.88 x 0.064 [429 x 378 x 1.5]	18 x 16	6.0
<b>HW-MP2016SS</b>	\$77.00	18.88 x 14.88 x 0.064 [479 x 378 x 1.5]	20 x 16	6.1

**Note: Dimensions in inches [millimeters].**



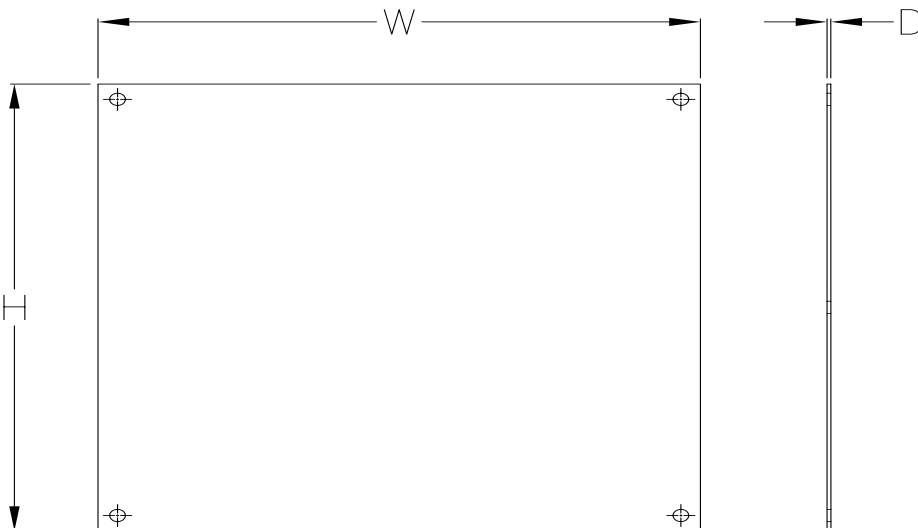
## Aluminum subpanels

Subpanel Part Number	Price	Subpanel Size HxWxD	Enclosure Nominal Size HxW	Wt. (lb)
<b>HW-MP604A</b>	\$5.75	4.88 x 2.88 x 0.081 [124 x 73 x 2.0]	6 x 4	0.1
<b>HW-MP606A</b>	\$5.75	4.88 x 4.88 x 0.081 [124 x 124 x 2.0]	6 x 6	0.2
<b>HW-MP806A</b>	\$7.75	6.88 x 4.88 x 0.081 [175 x 124 x 2.0]	8 x 6	0.3
<b>HW-MP1008A</b>	\$11.50	8.88 x 6.88 x 0.081 [225 x 175 x 2.0]	10 x 8	0.5
<b>HW-MP1210A</b>	\$14.00	10.88 x 8.88 x 0.081 [276 x 225 x 2.0]	12 x 10	0.8
<b>HW-MP1412A</b>	\$15.50	12.88 x 10.88 x 0.081 [327 x 276 x 2.0]	14 x 12	1.1
<b>HW-MP1614A</b>	\$20.50	14.88 x 12.88 x 0.081 [378 x 327 x 2.0]	16 x 14	1.5
<b>HW-MP1816A</b>	\$26.50	16.88 x 14.88 x 0.081 [429 x 378 x 2.0]	18 x 16	2.5
<b>HW-MP2016A</b>	\$33.50	18.88 x 14.88 x 0.081 [479 x 378 x 2.0]	20 x 16	2.4
<b>HW-MP2020AL</b>	\$94.00	18.0 x 18.0 x 0.129 [457 x 457 x 3.3]	20 x 20	3.7
<b>HW-MP2420AL</b>	\$113.00	22.0 x 18.0 x 0.129 [558 x 457 x 3.3]	24 x 20	4.5
<b>HW-MP2424AL</b>	\$139.00	22.0 x 22.0 x 0.129 [558 x 558 x 3.3]	24 x 24	5.4

**Note: Dimensions in inches [millimeters].**

Enclosure Shipping Schedule		
Same day	1-7 days	1 - 10 days
Color indicates shipping lead time in business days.		

## Dimensions



See our website: [www.AutomationDirect.com](http://www.AutomationDirect.com) for complete engineering drawings.

# Enclosure Accessories - Hole Seals and Plugs



## Hole Plugs for Non-Metal Enclosures

Designed to seal extra pushbutton holes, conduit openings, and knockout openings in Hubbell-Wiegman fiberglass enclosures from dirt, dust, oil, and water. Conduit hole sizes are nominal trade sizes, not actual hole sizes. (Example: 1 in. conduit actual diameter = 1.315 in.)



Hole Plugs	Price	Description	Nominal Hole Diameter Range in [mm]	Wt. [oz]
<b>HW-FGHP</b>	\$4.75	Hubbell-Wiegmann hole plug, fiber-reinforced plastic (FRP), closed-cell neoprene gasket, for 1/2 to 3/4-inch hole in non-metallic enclosure	0.50 - 0.81 [12.7 - 20.6]	2
<b>HW-FGHP-PB-000</b>	\$11.50	Hubbell-Wiegmann hole plug, fiberglass-reinforced plastic (FRP), closed-cell neoprene gasket. For use with 1/2in conduit holes in non-metallic enclosures.	0.88 [22.4]	2
<b>HW-FGHP-PB-075</b>	\$5.75	Hubbell-Wiegmann hole plug, fiber-reinforced plastic (FRP), closed-cell neoprene gasket, for 1/2- to 3/4-inch conduit holes and 22 or 30mm pushbutton holes in non-metallic enclosure	0.88 - 1.28 [22.4 - 32.5]	2
<b>HW-FGHP-100-125</b>	\$9.50	Hubbell-Wiegmann hole plug, fiber-reinforced plastic (FRP), closed-cell neoprene gasket, for 1 to 1-1/4 inch conduit holes in non-metallic enclosure	1.38 - 1.75 [35.1 - 44.5]	2
<b>HW-FGHP-150-200*</b>	\$11.50	Hubbell-Wiegmann hole plug, fiber-reinforced plastic (FRP), closed-cell neoprene gasket, for 1-1/2 to 2-inch conduit holes in non-metallic enclosure	2.00 - 2.56 [50.1 - 65.0]	2
<b>HW-FGHP-200-275</b>	\$21.50	Hubbell-Wiegmann hole plug, fiberglass-reinforced plastic (FRP), closed-cell neoprene gasket. For use with 2-1/2in conduit holes in non-metallic enclosures.	3.00 [76.2]	2
<b>HW-FGHP-250-350</b>	\$28.50	Hubbell-Wiegmann hole plug, fiberglass-reinforced plastic (FRP), closed-cell neoprene gasket. For use with 3in conduit holes in non-metallic enclosures.	3.62 [92.0]	2
<b>HW-FGHP-300-425</b>	\$37.00	Hubbell-Wiegmann hole plug, fiberglass-reinforced plastic (FRP), closed-cell neoprene gasket. For use with 3-1/2in conduit holes in non-metallic enclosures.	4.12 [104.7]	2
<b>HW-FGHP-350-500</b>	\$47.50	Hubbell-Wiegmann hole plug, fiberglass-reinforced plastic (FRP), closed-cell neoprene gasket. For use with 4in conduit holes in non-metallic enclosures.	4.62 [117.4]	2

*\*Note: Will maintain NEMA 4X rating.*

Enclosure Shipping Schedule			
Same day	1-7 days	1-10 days	1 - 15 days

Color indicates shipping lead time in business days.

# Vents and Louvers for Non-Metallic Enclosures



## Drain/Breather Vents



**HW-DVKIT**



**HW-4XBKIT**

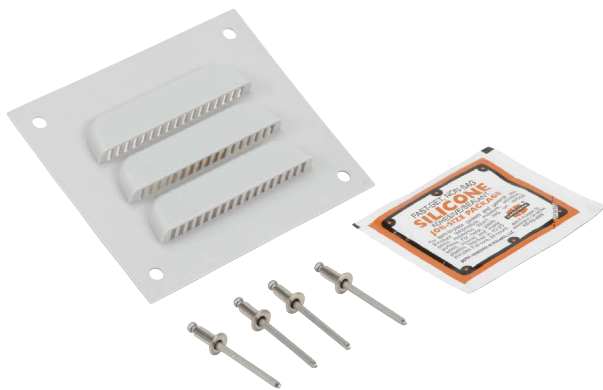


**HW-4XDVKIT**

Part Number	Price	Description	Wt. (oz)
<b>HW-DV</b>	\$9.75	Hubbell-Wiegmann single drain vent, PVC. For use on non-metallic enclosures. Includes drain vent and silicone adhesive/sealant.	2
<b>HW-DVKIT</b>	\$14.00	Hubbell-Wiegmann single drain vent kit, PVC. Includes drain vent and silicone adhesive/sealant.	2
<b>HW-4XBKIT</b>	\$48.00	Hubbell-Wiegmann single breather vent kit allows enclosure to "breathe" while maintaining UL Type 4X enclosure rating.	4.8
<b>HW-4XDVKIT</b>	\$20.00	Hubbell-Wiegmann single drain vent kit properly drains unwanted moisture while maintaining UL Type 4X enclosure rating.	3.2

Enclosure Shipping Schedule	
1-7 days	1 - 15 days
Color indicates shipping lead time in business days.	

## Louver Plate



**HW-LPKIT**

Part Number	Price	Description	Wt.
<b>HW-LP</b>	\$14.00	Louver plate, for ventilation in non-metallic enclosure, polypropylene, 4.5 inch wide x 4.0 inch high. For 3 inch x 3 inch cutout.	2 oz
<b>HW-LPKIT</b>	\$30.50	Louver plate kit, for ventilation in non-metallic enclosure. Includes 4.5 inch wide x 4.0 inch high polypropylene louver plate, rivets and silicone adhesive/sealant. For 3 inch x 3 inch cutout.	2 oz