

# IronHorse<sup>®</sup> Cast-Iron Helical Bevel Gearboxes

## Helical Bevel Gearbox Accessories



**HBR-37-DS**  
Double Output Shaft



**HBR-37-S**  
Single Output Shaft



**HBR-3777V**  
Breather Plug



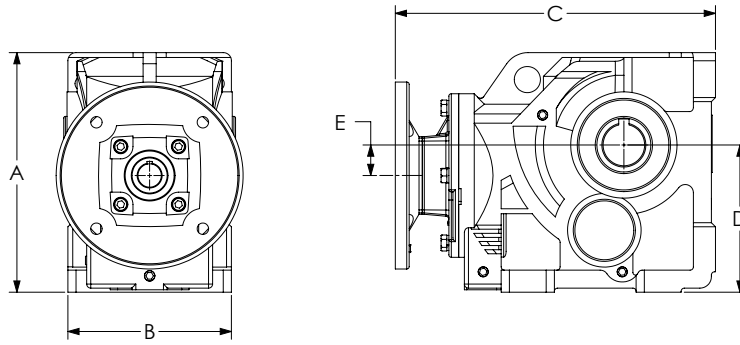
**HBR-8797V**  
Breather Plug

IronHorse Cast-Iron Helical Bevel Gearbox Accessories		
Part Number	Price	Description
<b>HBR-37-DS</b>	\$49.50	IronHorse double output shaft, 1.000in. For use with HBR-37 series gearboxes. (4) keys, (1) spacer and (1) retaining ring included.
<b>HBR-37-S</b>	\$25.50	IronHorse single output shaft, 1.000in. For use with HBR-37 series gearboxes. (3) keys, (1) end plate, (1) lock washer and (1) bolt included.
<b>HBR-47-DS</b>	\$73.00	IronHorse double output shaft, 1.250in. For use with HBR-47 series gearboxes. (4) keys, (1) spacer and (1) retaining ring included.
<b>HBR-47-S</b>	\$36.50	IronHorse single output shaft, 1.250in. For use with HBR-47 series gearboxes. (3) keys, (1) end plate, (1) lock washer and (1) bolt included.
<b>HBR-67-DS</b>	\$156.00	IronHorse double output shaft, 1.500in. For use with HBR-67 series gearboxes. (4) keys, (1) spacer and (1) retaining ring included.
<b>HBR-67-S</b>	\$77.00	IronHorse single output shaft, 1.500in. For use with HBR-67 series gearboxes. (3) keys, (1) end plate, (1) lock washer and (1) bolt included.
<b>HBR-77-DS</b>	\$202.00	IronHorse double output shaft, 2.000in. For use with HBR-77 series gearboxes. (4) keys, (1) spacer and (1) retaining ring included.
<b>HBR-77-S</b>	\$101.00	IronHorse single output shaft, 2.000in. For use with HBR-77 series gearboxes. (3) keys, (1) end plate, (1) lock washer and (1) bolt included.
<b>HBR-87-DS</b>	\$309.00	IronHorse double output shaft, 2.375in. For use with HBR-87 series gearboxes. (4) keys, (1) spacer and (1) retaining ring included.
<b>HBR-87-S</b>	\$154.00	IronHorse single output shaft, 2.375in. For use with HBR-87 series gearboxes. (3) keys, (1) end plate, (1) lock washer and (1) bolt included.
<b>HBR-3777V</b>	\$4.50	IronHorse breather plug, replacement. For use with size 37 through 77 HGR- and HBR-series gearboxes.
<b>HBR-8797V</b>	\$6.75	IronHorse breather plug, replacement. For use with size 87 and larger HGR- and HBR-series gearboxes.

# IronHorse<sup>®</sup> Cast-Iron Helical Bevel Gearboxes

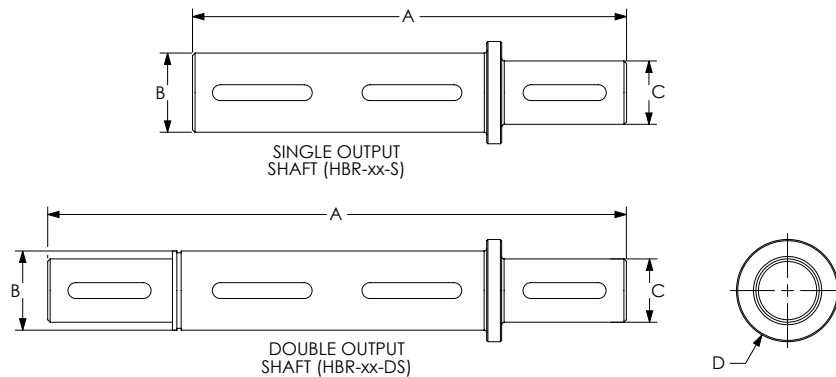
## Dimensions

Units: inches [mm]



IronHorse Cast-Iron Helical Bevel Gearboxes						
Part Number	Frame	A	B	C	D	E
HBR-37-xxx-A	56C	6.46 [164.1]	4.72 [119.9]	10.35 [262.9]	3.94 [100.1]	0.31 [7.9]
HBR-47-xxx-A		7.32 [185.9]	5.91 [150.1]	11.56 [293.6]	4.41 [112.0]	0.20 [5.1]
HBR-67-xxx-A		8.98 [228.1]	7.09 [180.1]	12.42 [315.5]	5.51 [140.0]	0.75 [19.1]
HBR-37-xxx-B	143/5TC	6.46 [164.1]	4.72 [119.9]	10.75 [273.1]	3.94 [100.1]	0.31 [7.9]
HBR-47-xxx-B		7.32 [185.9]	5.91 [150.1]	11.95 [303.5]	4.41 [112.0]	0.20 [5.1]
HBR-67-xxx-B		8.98 [228.1]	7.09 [180.1]	13.13 [333.5]	5.51 [140.0]	0.75 [19.1]
HBR-77-xxx-B		11.54 [293.1]	8.27 [210.1]	14.69 [373.1]	7.09 [180.1]	1.47 [37.3]
HBR-47-xxx-C	182/4TC	7.32 [185.9]	5.91 [150.1]	12.68 [322.1]	4.41 [112.0]	0.20 [5.1]
HBR-67-xxx-C		8.98 [228.1]	7.09 [180.1]	13.86 [352.0]	5.51 [140.0]	0.75 [19.1]
HBR-77-xxx-C		11.54 [293.1]	8.27 [210.1]	15.41 [391.4]	7.09 [180.1]	1.47 [37.3]
HBR-87-xxx-C		13.39 [340.1]	9.45 [240.0]	17.99 [456.9]	8.35 [212.1]	1.24 [31.5]
HBR-77-xxx-D	213/5TC	11.54 [293.1]	8.27 [210.1]	17.68 [449.1]	7.09 [180.1]	1.47 [37.3]
HBR-87-xxx-D		13.39 [340.1]	9.45 [240.0]	20.26 [514.6]	8.35 [212.1]	1.24 [31.5]
HBR-87-xxx-E	254/6TC	13.39 [340.1]	9.45 [240.0]	21.24 [539.5]	8.35 [212.1]	1.24 [31.5]

See our website: [www.AutomationDirect.com](http://www.AutomationDirect.com) for complete engineering drawings.



IronHorse Cast-Iron Helical Bevel Gearbox Shafts				
Part Number	A	B	C	D
HBR-37-DS	9.14 [232.1]	Ø 1.25 [31.8]	Ø 1.00 [25.4]	Ø 1.61 [41.0]
HBR-37-S	6.85 [174.0]			
HBR-47-DS	11.10 [281.9]	Ø 1.38 [34.9]	Ø 1.25 [31.8]	Ø 1.73 [44.0]
HBR-47-S	8.42 [213.9]			
HBR-67-DS	13.94 [354.0]	Ø 1.50 [38.1]	Ø 1.50 [38.1]	Ø 1.89 [48.0]
HBR-67-S	10.43 [265.0]			
HBR-77-DS	16.78 [426.2]	Ø 2.00 [50.8]	Ø 2.00 [50.8]	Ø 2.40 [61.0]
HBR-77-S	12.44 [316.1]			
HBR-87-DS	19.52 [495.8]	Ø 2.38 [60.3]	Ø 2.38 [60.3]	Ø 2.80 [71.0]
HBR-87-S	14.41 [365.9]			

See our website: [www.AutomationDirect.com](http://www.AutomationDirect.com) for complete engineering drawings.