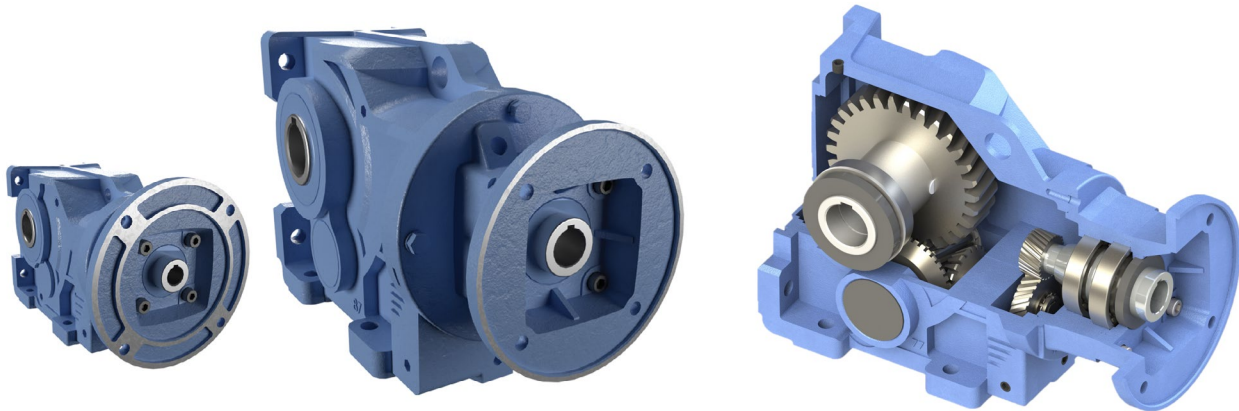


IronHorse[®] Cast-Iron Helical Bevel Gearboxes

Helical Bevel Gearbox Overview



IronHorse Cast-Iron Helical Bevel Gearboxes

Gearbox Overview

Gearboxes, also known as enclosed gear drives or speed reducers, are mechanical drive components that can control a load at a reduced fixed ratio of the motor speed. The output torque is also increased by the same ratio, while the horsepower remains the same (less efficiency loss). For example, a 10:1 ratio gearbox outputs approximately the same motor output horsepower, but motor speed is divided by 10 and motor torque is multiplied by 10.

Helical bevel gearboxes use helical gears to provide quiet startup and smooth operation.

IronHorse helical bevel gearboxes are manufactured in an ISO9001-certified plant by one of the leading and most internationally acclaimed gearbox manufacturers in the world today. Only the highest quality materials are tested, certified, and used in the manufacturing process. Strict adherence to and compliance with the toughest international and U.S. testing standards and manufacturing procedures guarantees you the highest quality products.

We offer helical bevel gearboxes with cast-iron frames. The hollow-bore output accepts double or single shafts which are perpendicular to the input. Our gearboxes utilize C-face mounting interfaces for C-face motors.

Features

- C-face and TC-face input; bevel, perpendicular output
- Universally interchangeable compact design ensures easy OEM replacement
- Flexible installation: 6 mounting positions
- FCD45 cast-iron one-piece housing
- 20CrMO alloy steel pinion and gears
- AGMA 11 & 12 rated, SCM415 pinion gears
- Gears supported by generously-sized precision ball and tapered bearings
- Double-lipped embedded oil seals to prevent leakage
- Two-year warranty

Applications

- Use with electric motors for reducing output speed, increasing torque.
- Use for conveyors, packaging machines, rotary tables, etc.

IronHorse® Cast-Iron Helical Bevel Gearboxes

Specifications

IronHorse Cast-Iron Helical Bevel Gearbox Specifications													
Part Number	Price	Box Size	Nominal Ratio	Actual Ratio	Output RPM @ 1750 RPM Input	NEMA Motor Frame**	Max Input Power (hp) ^{1),3)}	Max Output Torque (lb-in) ³⁾	Max OHL (lbs) ^{2),3)}	Efficiency (%)	Approx Weight (lb)		
HBR-37-010-A	\$1,070.00	37	10	11.09	158	56C	4.33	1,565	520	91	32		
HBR-37-010-B	\$1,070.00		10	11.09	158	143/5TC	4.33	1,565	510		37		
HBR-37-025-A	\$1,070.00		25	23.10	76	56C	2.20	1,659	635		32		
HBR-37-025-B	\$1,070.00		25	23.10	76	143/5TC	2.20	1,659	610		37		
HBR-37-040-A	\$1,070.00		40	37.97	46	56C	1.43	1,770	735		32		
HBR-37-040-B	\$1,070.00		40	37.97	46	143TC	1.43	1,770	705		37		
HBR-37-060-A	\$1,070.00		60	59.67	29	56C	0.91	1,770	815		32		
HBR-47-010-A	\$1,171.00	47	10	9.95	176	56C	6.46	2,097	620	91	46		
HBR-47-010-B	\$1,171.00		10	9.95	176	143/5TC	6.46	2,097	580		51		
HBR-47-010-C	\$1,171.00		10	9.95	176	182/4TC	6.46	2,097	550		57		
HBR-47-020-B	\$1,171.00		20	20.65	85	143/5TC	3.97	2,675	690		51		
HBR-47-020-C	\$1,171.00		20	20.65	85	182TC	3.97	2,675	610		57		
HBR-47-040-A	\$1,171.00		40	41.36	42	56C	2.50	3,372	945		46		
HBR-47-040-B	\$1,171.00		40	41.36	42	143/5TC	2.50	3,372	905		51		
HBR-47-060-A	\$1,171.00		60	58.99	30	56C	1.84	3,540	1030		46		
HBR-47-060-B	\$1,171.00		60	58.99	30	143TC	1.84	3,540	980		51		
HBR-47-085-A	\$1,171.00		85	86.89	20	56C	1.42	3,540	1110		46		
HBR-67-010-B *	\$1,464.00		67	10	9.66	181	143/5TC	12.06	3,800		1500	91	73
HBR-67-010-C *	\$1,464.00			10	9.66	181	182/4TC	12.06	3,800		1410		80
HBR-67-020-B *	\$1,464.00			20	22.18	79	143/5TC	6.26	4,530		1760		73
HBR-67-020-C *	\$1,464.00	20		22.18	79	182/4TC	6.26	4,530	1570	80			
HBR-67-040-A *	\$1,464.00	40		37.98	46	56C	4.62	5,730	2140	69			
HBR-67-040-B *	\$1,464.00	40		37.98	46	143/5TC	4.62	5,730	2140	73			
HBR-67-040-C *	\$1,464.00	40		37.98	46	182TC	4.62	5,730	1510	80			
HBR-67-065-A *	\$1,464.00	65		64.97	27	56C	2.95	6,260	2140	69			
HBR-67-065-B *	\$1,464.00	65		64.97	27	143/5TC	2.95	6,260	2140	73			
HBR-67-085-A *	\$1,464.00	85		84.10	21	56C	2.46	6,760	2140	69			
HBR-67-085-B *	\$1,464.00	85		84.10	21	143/5TC	2.46	6,760	2140	73			
HBR-67-120-A *	\$1,464.00	120		118.14	15	56C	1.88	7,260	2140	69			
HBR-67-120-B *	\$1,464.00	120		118.14	15	143TC	1.88	7,260	2140	73			

* Due to size and/or weight restrictions, gearboxes HBR-67-xxx-x through HBR-87-xxx-x must ship via Freight.
 ** Although physical mounting to other motors is possible, please use only the motors as specified in this table.
 1) Max Input Power is the highest HP 1800 rpm motor to be used with the gearbox under conditions of 1.0 service factor. Gearbox input power capacity decreases as motor speed decreases and as service factor increases.
 2) OHL= Overhung Load ratings are for forces perpendicular to the output shaft and located at the shaft midpoint, such as from a gear, pulley, or sprocket with a belt or chain. Divide OHL ratings by the applicable OHL K factors shown separately in the Selection Factors tables. OHL ratings should also be divided by applicable service factors.
 3) Maximum Mechanical Ratings are limits based on the strength and durability of gearbox components; applicable when operating time is short and stopped time is greater than or equal to operating time. These ratings are applicable for 1.0 service factor loads and may require modification depending upon characteristics of the applicable driven loads. Refer to the "Service Factors" table (page tPTR-22) for more information.

(table continued next page)

IronHorse® Cast-Iron Helical Bevel Gearboxes

Specifications (continued)

IronHorse Cast-Iron Helical Bevel Gearbox Specifications (continued from previous page)											
Part Number	Price	Box Size	Nominal Ratio	Actual Ratio	Output RPM @ 1750 RPM Input	NEMA Motor Frame**	Max Input Power (hp) ^{1) 3)}	Max Output Torque (lb-in) ³⁾	Max OHL (lbs) ^{2) 3)}	Efficiency (%)	Approx Weight (lb)
HBR-77-010-C *	\$2,225.00	77	10	9.96	176	182/4TC	24.02	7,800	1860	91	132
HBR-77-010-D *	\$2,225.00		10	9.96	176	213/5TC	24.02	7,800	1690		148
HBR-77-020-C *	\$2,225.00		20	20.24	86	182/4TC	14.78	9,765	2080		132
HBR-77-020-D *	\$2,225.00		20	20.24	86	213/5TC	14.78	9,765	1740		148
HBR-77-040-C *	\$2,225.00		40	39.76	44	182/4TC	9.21	11,955	2050		132
HBR-77-040-D *	\$2,225.00		40	39.76	44	213TC	9.21	11,955	1390		148
HBR-77-060-C *	\$2,225.00		60	57.05	31	182/4TC	7.16	13,325	1860		132
HBR-77-080-B *	\$2,225.00		80	78.07	22	143/5TC	5.38	13,710	3080		128
HBR-77-080-C *	\$2,225.00		80	78.07	22	182TC	5.38	13,710	2570		132
HBR-77-120-B *	\$2,225.00		120	122.94	14	143TC	3.42	12,480	3090		128
HBR-87-020-D *	\$3,465.00	87	20	20.90	84	213/5TC	25.88	17,650	2780	91	230
HBR-87-020-E *	\$3,465.00		20	20.90	84	254/6TC	25.88	17,650	1940		257
HBR-87-040-C *	\$3,465.00		40	43.31	40	182/4TC	14.76	20,870	3450		208
HBR-87-040-D *	\$3,465.00		40	43.31	40	213/5TC	14.76	20,870	2930		230
HBR-87-060-C *	\$3,465.00		60	61.42	28	182/4TC	11.11	22,270	3510		208
HBR-87-060-D *	\$3,465.00		60	61.42	28	213/5TC	11.11	22,270	2780		230
HBR-87-080-C *	\$3,465.00		80	82.86	21	182/4TC	8.72	23,570	4260		208
HBR-87-120-C *	\$3,465.00		120	117.56	15	182TC	6.23	23,900	4370		208

* Due to size and/or weight restrictions, gearboxes HBR-67-xxx-x through HBR-87-xxx-x must ship via Freight.
 ** Although physical mounting to other motors is possible, please use only the motors as specified in this table.
 1) Max Input Power is the highest HP 1800 rpm motor to be used with the gearbox under conditions of 1.0 service factor. Gearbox input power capacity decreases as motor speed decreases and as service factor increases.
 2) OHL= Overhung Load ratings are for forces perpendicular to the output shaft and located at the shaft midpoint, such as from a gear, pulley, or sprocket with a belt or chain. Divide OHL ratings by the applicable OHL K factors shown separately in the Selection Factors tables. OHL ratings should also be divided by applicable service factors.
 3) Maximum Mechanical Ratings are limits based on the strength and durability of gearbox components; applicable when operating time is short and stopped time is greater than or equal to operating time. These ratings are applicable for 1.0 service factor loads and may require modification depending upon characteristics of the applicable driven loads. Refer to the "Service Factors" table (page tPTR-22) for more information.

Gearbox Selection Factors

Overhung Load K Factors for Various Drive Types	
Chain & Sprocket	1.00
Gear	1.25
V-belt	1.50
Flat Belt	2.50
Variable Pitch Belt	3.50

Divide gearbox OHL ratings by the applicable OHL K factors.

Service Factors for Selecting Gearboxes (when used with electric motors)				
Service Continuity (per day)	Load Characteristics			
	Uniform	Moderate Shock*	Heavy Shock*	Extreme Shock*
Occasional 1/2 hour	1.00	1.00	1.00	1.25
Less than 3 hours	1.00	1.00	1.25	1.50
3-10 hours	1.00	1.25	1.50	1.75
More than 10 hours	1.25	1.50	1.75	2.00

* Shock results from sudden increases in the torque demand of the load, such as: sudden stopping, restarting, and/or reversing; significantly heavy loads dropped onto a moving conveyor; impact loads such as punch press operations.
 Depending upon the load characteristics, divide the gearbox HP, Overhung Load, and Maximum Mechanical Capacity ratings by the applicable service factor.



NOTE: FOR MORE DETAILED INFORMATION REGARDING SERVICE FACTORS AND GEARBOX SELECTION, PLEASE REFER TO OUR HBR GEARBOX USER MANUAL WHICH IS AVAILABLE FOR FREE DOWNLOAD FROM OUR WEBSITE AT WWW.AUTOMATIONDIRECT.COM.

IronHorse® Cast-Iron Helical Bevel Gearboxes

Helical Bevel Gearbox Accessories



HBR-37-DS
Double Output Shaft



HBR-37-S
Single Output Shaft



HBR-3777V
Breather Plug



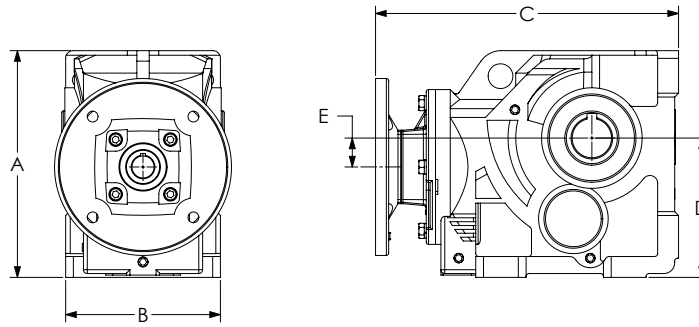
HBR-8797V
Breather Plug

IronHorse Cast-Iron Helical Bevel Gearbox Accessories		
Part Number	Price	Description
HBR-37-DS	\$70.00	IronHorse double output shaft, 1.000in. For use with HBR-37 series gearboxes. (4) keys, (1) spacer and (1) retaining ring included.
HBR-37-S	\$183.00	IronHorse single output shaft, 1.000in. For use with HBR-37 series gearboxes. (3) keys, (1) end plate, (1) lock washer and (1) bolt included.
HBR-47-DS	\$91.00	IronHorse double output shaft, 1.250in. For use with HBR-47 series gearboxes. (4) keys, (1) spacer and (1) retaining ring included.
HBR-47-S	\$280.00	IronHorse single output shaft, 1.250in. For use with HBR-47 series gearboxes. (3) keys, (1) end plate, (1) lock washer and (1) bolt included.
HBR-67-DS	\$139.00	IronHorse double output shaft, 1.500in. For use with HBR-67 series gearboxes. (4) keys, (1) spacer and (1) retaining ring included.
HBR-67-S	\$45.00	IronHorse single output shaft, 1.500in. For use with HBR-67 series gearboxes. (3) keys, (1) end plate, (1) lock washer and (1) bolt included.
HBR-77-DS	\$23.00	IronHorse double output shaft, 2.000in. For use with HBR-77 series gearboxes. (4) keys, (1) spacer and (1) retaining ring included.
HBR-77-S	\$66.00	IronHorse single output shaft, 2.000in. For use with HBR-77 series gearboxes. (3) keys, (1) end plate, (1) lock washer and (1) bolt included.
HBR-87-DS	\$33.00	IronHorse double output shaft, 2.375in. For use with HBR-87 series gearboxes. (4) keys, (1) spacer and (1) retaining ring included.
HBR-87-S	\$141.00	IronHorse single output shaft, 2.375in. For use with HBR-87 series gearboxes. (3) keys, (1) end plate, (1) lock washer and (1) bolt included.
HBR-3777V	\$4.00	IronHorse breather plug, replacement. For use with size 37 through 77 HGR- and HBR-series gearboxes.
HBR-8797V	\$6.00	IronHorse breather plug, replacement. For use with size 87 and larger HGR- and HBR-series gearboxes.

IronHorse[®] Cast-Iron Helical Bevel Gearboxes

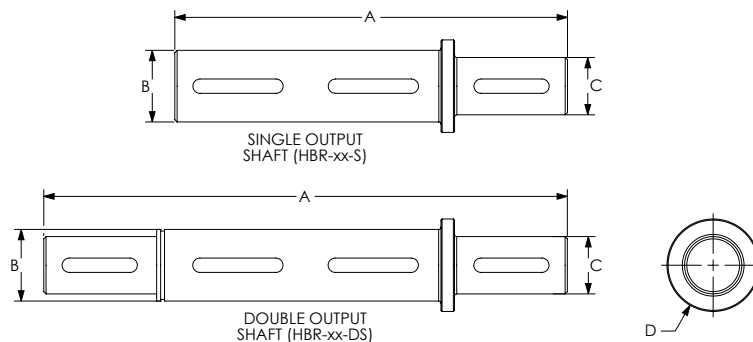
Dimensions

Units: inches [mm]



IronHorse Cast-Iron Helical Bevel Gearboxes						
Part Number	Frame	A	B	C	D	E
HBR-37-xxx-A	56C	6.46 [164.1]	4.72 [119.9]	10.35 [262.9]	3.94 [100.1]	0.31 [7.9]
HBR-47-xxx-A		7.32 [185.9]	5.91 [150.1]	11.56 [293.6]	4.41 [112.0]	0.20 [5.1]
HBR-67-xxx-A		8.98 [228.1]	7.09 [180.1]	12.42 [315.5]	5.51 [140.0]	0.75 [19.1]
HBR-37-xxx-B	143/5TC	6.46 [164.1]	4.72 [119.9]	10.75 [273.1]	3.94 [100.1]	0.31 [7.9]
HBR-47-xxx-B		7.32 [185.9]	5.91 [150.1]	11.95 [303.5]	4.41 [112.0]	0.20 [5.1]
HBR-67-xxx-B		8.98 [228.1]	7.09 [180.1]	13.13 [333.5]	5.51 [140.0]	0.75 [19.1]
HBR-77-xxx-B		11.54 [293.1]	8.27 [210.1]	14.69 [373.1]	7.09 [180.1]	1.47 [37.3]
HBR-47-xxx-C	182/4TC	7.32 [185.9]	5.91 [150.1]	12.68 [322.1]	4.41 [112.0]	0.20 [5.1]
HBR-67-xxx-C		8.98 [228.1]	7.09 [180.1]	13.86 [352.0]	5.51 [140.0]	0.75 [19.1]
HBR-77-xxx-C		11.54 [293.1]	8.27 [210.1]	15.41 [391.4]	7.09 [180.1]	1.47 [37.3]
HBR-87-xxx-C	213/5TC	13.39 [340.1]	9.45 [240.0]	17.99 [456.9]	8.35 [212.1]	1.24 [31.5]
HBR-77-xxx-D		11.54 [293.1]	8.27 [210.1]	17.68 [449.1]	7.09 [180.1]	1.47 [37.3]
HBR-87-xxx-D	254/6TC	13.39 [340.1]	9.45 [240.0]	20.26 [514.6]	8.35 [212.1]	1.24 [31.5]
HBR-87-xxx-E		13.39 [340.1]	9.45 [240.0]	21.24 [539.5]	8.35 [212.1]	1.24 [31.5]

See our website: www.AutomationDirect.com for complete engineering drawings.



IronHorse Cast-Iron Helical Bevel Gearbox Shafts				
Part Number	A	B	C	D
HBR-37-DS	9.14 [232.1]	Ø 1.25 [31.8]	Ø 1.00 [25.4]	Ø 1.61 [41.0]
HBR-37-S	6.85 [174.0]			
HBR-47-DS	11.10 [281.9]	Ø 1.38 [34.9]	Ø 1.25 [31.8]	Ø 1.73 [44.0]
HBR-47-S	8.42 [213.9]			
HBR-67-DS	13.94 [354.0]	Ø 1.50 [38.1]	Ø 1.50 [38.1]	Ø 1.89 [48.0]
HBR-67-S	10.43 [265.0]			
HBR-77-DS	16.78 [426.2]	Ø 2.00 [50.8]	Ø 2.00 [50.8]	Ø 2.40 [61.0]
HBR-77-S	12.44 [316.1]			
HBR-87-DS	19.52 [495.8]	Ø 2.38 [60.3]	Ø 2.38 [60.3]	Ø 2.80 [71.0]
HBR-87-S	14.41 [365.9]			

See our website: www.AutomationDirect.com for complete engineering drawings.