

Terminal Straps and Brackets



1414 and Eclipse Junior Series Enclosures

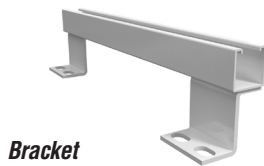
Application

- Used to provide convenient mounting for terminal blocks in 1414 enclosures and Eclipse Junior series enclosures.
- Finished in RAL 9003 white powder coat.



Bracket Assembly

- Each kit consists of two brackets.
- “C” channel construction provides easy alignment of terminal straps.



Terminal Strap

- 1.5in wide x 0.187in thick steel.
- Each strap includes spring-locking hardware.
- Countersunk holes in straps provide extra terminal mounting space.

How to Order

Each enclosure requires one bracket assembly kit and the required number of straps (Strap Part No. corresponds to enclosure dimension “A” and is mounted parallel to same, Bracket Part No. corresponds to enclosure dimension “B” and is mounted parallel to same).

• Example: For an EJ866 enclosure, order one 14B6 bracket assembly and a minimum of one 14B8 terminal strap kits. Additional terminal strap kits will provide additional mounting space.

Shipping Schedule	
Same day	1 - 15 days
Color indicates shipping lead time in business days.	

Bracket Assembly

Terminal Brackets - 1414 and Eclipse Junior Series Enclosures		
Bracket (Pair) Part Number	Price	For Use With
14B6	\$16.00	8in (H or W) 1414
14B8	\$17.00	10in (H or W) 1414
14B10	\$18.00	12in (H or W) 1414
14B12	\$19.00	14in (H or W) 1414
14B14	\$19.75	16in (H or W) 1414

Straps

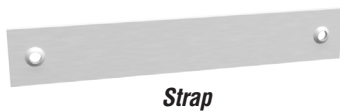
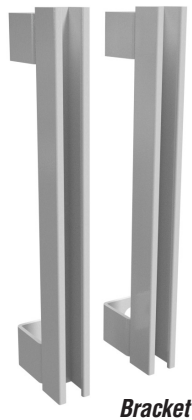
Terminal Straps - 1414 and Eclipse Junior Series Enclosures			
Part Number	Price	Length	Usable Mounting Space
14S8	\$8.25	6in	4.30in
14S10	\$8.75	8in	6.30in
14S12	\$9.25	10in	8.30in
14S14	\$9.75	12in	10.30in
14S16	\$10.25	12in	12.30in

See our website: www.AutomationDirect.com for complete engineering drawings.

Terminal Straps and Brackets



1418 Enclosures



Application

- Used to provide convenient mounting for terminal blocks, pneumatic controls or small relays in 1418 wallmount enclosures.
- Brackets may be installed horizontally or vertically in an enclosure if the size corresponds to enclosure length or width.
- Finished in RAL 9003 white powder.

Bracket Assembly

- Each kit consists of two or three brackets per assembly.
- Brackets combined with collar stud length provide 3in minimum clearance from the rear of the enclosure.
- “C” channel construction provides easy alignment of terminal straps.

Terminal Strap

- 1.5in wide x 0.187in thick steel.
- Each strap includes spring locking hardware.
- Countersunk holes in straps provide extra terminal mounting space.

How to Order

- Each enclosure requires one bracket assembly kit and the required number of straps (order separately).
- Determine if strap will be mounted parallel to dimension “A” or “B”.
- Choose the part number that corresponds to enclosure dimensions “A” or “B”.
- When choosing a bracket assembly to be parallel to dimension “B” in an enclosure of 24in, 30in or 36in width, determine if a two or three bracket assembly is required. When enclosures are 48in or greater on “A” dimension, 6 collar studs are used.
- Choose strap kit to correspond to the other enclosure dimensions.
- Order the number of kits equal to the number of straps required.

Bracket Assembly

Terminal Brackets - 1418 Enclosures			
Part Number	Price	# of Brackets	For Use With
18B212	\$41.50	2	12in (H or W) 1418 wall-mount
18B216	\$46.00	2	16in (H or W) 1418 wall-mount
18B220	\$47.00	2	20in (H or W) 1418 wall-mount
18B224	\$57.00	2	24in (H or W) 1418 wall-mount
18B324	\$69.00	3	24in (H or W) 1418 wall-mount
18B230	\$61.00	2	30in (H or W) 1418 wall-mount
18B330	\$81.00	3	30in (H or W) 1418 wall-mount
18B236	\$66.00	2	36in (H or W) 1418 wall-mount
18B336	\$91.00	3	36in (H or W) 1418 wall-mount

Note: Dimensions in inches [millimeters].

Strap

Terminal Straps - 1418 Enclosures			
Part Number	Price	Length	For Use With
18S12	\$15.50	10 [241]	12in (H or W) 1418 wall-mount
18S16	\$15.75	14 [343]	16in (H or W) 1418 wall-mount
18S20	\$18.25	18 [445]	20in (H or W) 1418 wall-mount
18S24	\$20.50	22 [546]	24in (H or W) 1418 wall-mount
18S30	\$24.50	28 [699]	30in (H or W) 1418 wall-mount
18S36	\$28.00	34 [851]	36in (H or W) 1418 wall-mount
18S42	\$32.00	40 [1003]	42in (H or W) 1418 wall-mount
18S48	\$35.50	46 [1257]	48in (H or W) 1418 wall-mount
18S60	\$43.00	58 [1461]	60in (H or W) 1418 wall-mount
18S72	\$47.50	70 [1765]	72in (H or W) 1418 wall-mount

Note: Dimensions in inches [millimeters].

See our website: www.AutomationDirect.com for complete engineering drawings.

Shipping Schedule	
Same day	1 - 15 days
Color indicates shipping lead time in business days.	

Freestanding Enclosure Center Panel Supports



1418FS and HN4FS Enclosures

Application

- Adapts panels, swing frames, and panel rails from single-door enclosures so they can be used on double-door enclosures.
- Suitable for single or dual access double-door enclosures.
- Center panel support mounts into front to back mounting channels (top and bottom) found in double-door enclosures.
- Allows a combination of two 20in panels in a 48in wide enclosure, two 26in panels in a 60in wide enclosure, or two 32in panels in a 72in wide enclosure.
- Width is adjustable from 1.91in to 2.34in.
- Support may be positioned at any depth within the enclosure.
- Finished in RAL 9003 white powder coat.

Shipping Schedule	
Same day	1 - 15 days
Color indicates shipping lead time in business days.	

Freestanding Enclosure Center Panel Supports		
Part Number	Price	For Use With
1418ACS	\$200.00	60in (H) double-door
1418ZCS	\$223.00	90in (H) double-door
1418BCS	\$265.00	72in (H) double-door

See our website: www.AutomationDirect.com for complete engineering drawings.

Freestanding Enclosure Panel Rails



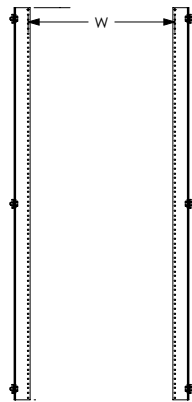
1418FS and HN4FS Enclosures

Application

- Provides 19in or 24in rack equipment mounting capability.
- Sold in pairs.
- Formed from 10 gauge steel.
- Drilled and tapped 10-32 to EIA spacing of 0.5 - 0.63in - 0.63 - 0.5in.
- Finished in RAL 9003 white powder coat.



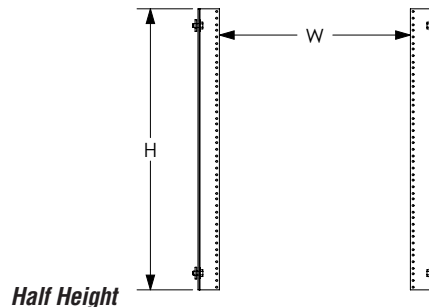
Shipping Schedule	
Same day	1 - 15 days
Color indicates shipping lead time in business days.	



Full Height

Freestanding Enclosure Panel Rails - 1418FS and HN4FS Enclosures				
Part Number	Price	Rack Width	For Use With	Panel Height
1418TFHP	\$181.00	for mounting 19in rack equipment	60x24in	Full
1418THHP	\$106.00	for mounting 19in rack equipment	60x24in	Half
1418WFHP	\$209.00	for mounting 19in rack equipment	72x24in	Full
1418WHHP	\$132.00	for mounting 19in rack equipment	72x24in	Half
1418XFHP	\$209.00	for mounting 24in rack equipment	72x30in	Full
1418XHHP	\$132.00	for mounting 24in rack equipment	72x30in	Half
1418YYFHP	\$279.00	for mounting 19in rack equipment	90x24in	Full
1418YYHHP	\$159.00	for mounting 19in rack equipment	90x24in	Half

Note: Dimensions in inches [millimeters].



Half Height

See our website: www.AutomationDirect.com for complete engineering drawings.