

# Enclosure Subpanels

## N1J and C3RxxxHCR Enclosures



### Construction

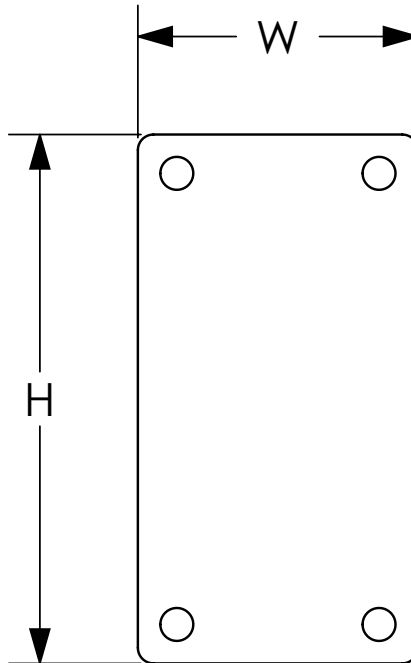
- Replacement panels for N1J enclosures.
- Optional panels for C3RxxxHCR enclosures.
- Made from 16 gauge steel.
- RAL 9003 white powder finish.



Shipping Schedule	
Same day	1 - 15 days
Color indicates shipping lead time in business days.	

Subpanels for N1J and C3RxxxHCR Enclosures			
Part Number	Price	Dimensions HxW	For Use With
<b>N1JP64</b>	\$3.75	4.25 x 2.25 [108 x 57]	6x4 C3R644HCR
<b>N1JP66</b>	\$3.75	4.25 x 4.25 [108 x 108]	6x6 N1J664 and C3R664HCR
<b>N1JP86</b>	\$4.50	6.25 x 4.25 [159 x 108]	8x6 N1J864 and C3R864HCR
<b>N1JP88</b>	\$5.00	6.25 x 6.25 [159 x 159]	8x8 N1J88x and C3R886HCR
<b>N1JP108</b>	\$6.00	8.25 x 6.25 [210 x 159]	10x8 N1J108x and C3R1086HCR
<b>N1JP1010</b>	\$7.00	8.25 x 8.25 [210 x 210]	10x10 N1J1010x
<b>N1JP1210</b>	\$8.00	10.25 x 8.25 [260 x 210]	12x10 N1J1210x and C3R12106HCR
<b>N1JP1212</b>	\$9.50	10.25 x 10.25 [260 x 260]	12x12 N1J1212x and C3R1212xxHCR
<b>N1JP1412</b>	\$10.75	12.25 x 10.25 [311 x 260]	14x12 N1J1412x
<b>N1JP1612</b>	\$12.00	14.25 x 10.25 [362 x 260]	16x12 N1J16126
<b>N1JP2012</b>	\$14.75	18.25 x 10.25 [464 x 260]	20x12 N1J20126

*Note: Dimensions in inches [millimeters].*



See our website: [www.AutomationDirect.com](http://www.AutomationDirect.com) for complete engineering drawings.

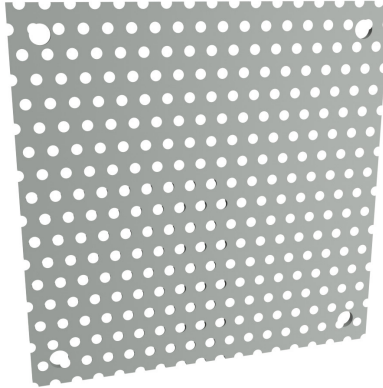
# Perforated Subpanels

## N1J and C3RxxxHCR Enclosures



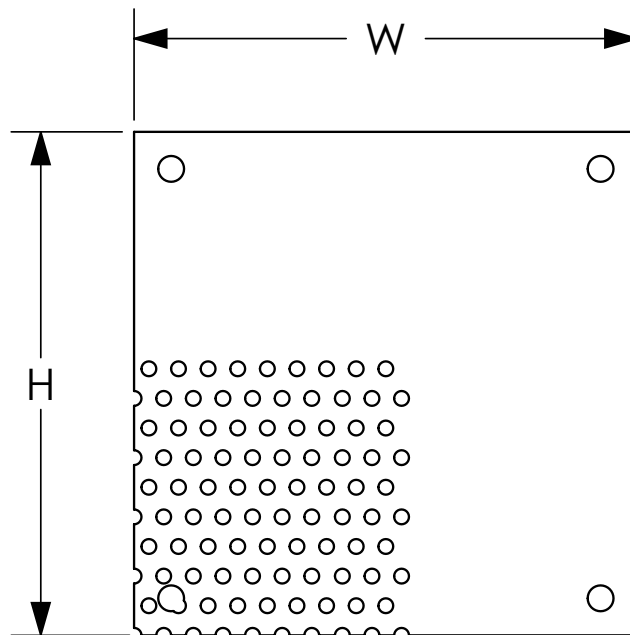
### Construction

- Made from 16 gauge steel.
- Accepts self-tapping screws eliminating timely measurement, marking and drilling of component mounting holes.
- 1/8in diameter holes on 1/4in staggered centers.
- ANSI 61 gray powder finish.



Shipping Schedule	
Same day	1 - 15 days
Color indicates shipping lead time in business days.	

Perforated Subpanels for N1J and C3RxxxHCR Enclosures			
Part Number	Price	Dimensions HxW	For Use With
<b>N1JP66PP</b>	\$4.00	4.25 x 4.25 [108 x 108]	6x6 N1J664 and C3R664HCR
<b>N1JP86PP</b>	\$4.50	6.25 x 4.25 [159 x 108]	8x6 N1J864 and C3R864HCR
<b>N1JP88PP</b>	\$5.25	6.25 x 6.25 [159 x 159]	8x8 N1J88x and C3R886HCR
<b>N1JP108PP</b>	\$6.25	8.25 x 6.25 [210 x 159]	10x8 N1J108x and C3R1086HCR
<b>N1JP1010PP</b>	\$7.25	8.25 x 8.25 [210 x 210]	10x10 N1J1010x
<b>N1JP1210PP</b>	\$8.25	10.25 x 8.25 [260 x 210]	12x10 N1J1210x and C3R12106HCR
<b>N1JP1212PP</b>	\$10.00	10.25 x 10.25 [260 x 260]	12x12 N1J1212x and C3R1212xxHCR
<b>N1JP1412PP</b>	\$11.00	12.25 x 10.25 [311 x 260]	14x12 N1J1412x
<b>N1JP1612PP</b>	\$12.50	14.25 x 10.25 [362 x 260]	16x12 N1J1612x
<b>N1JP2012PP</b>	\$15.25	18.25 x 10.25 [464 x 260]	20x12 N1J2012x



See our website: [www.AutomationDirect.com](http://www.AutomationDirect.com) for complete engineering drawings.