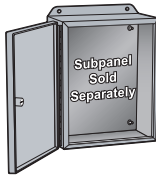
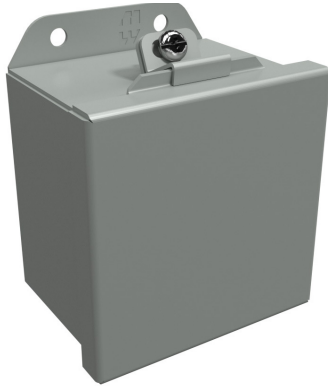


NEMA 4 and 12 Lift-Off Cover Wall Mount



| Shipping Schedule | |
|--|-------------|
| Same day | 1 - 15 days |
| Color indicates shipping lead time in business days. | |

Applications

- Designed for use as instrument enclosures, electric, hydraulic or pneumatic control housings, electrical junction boxes or terminal wiring enclosures.
- Provides a degree of protection from falling dirt, dust, oil and water.

Construction

- Body formed from 16 gauge or 14 gauge steel. Covers are formed from 14 gauge steel.
- Smooth, continuously welded seams without knockouts, cutouts or holes.
- 14 gauge welded mounting brackets
- Lift-off cover is secured with stainless steel clamps and stainless steel screws and retained with a stainless steel chain when open.
- Seamless poured-in-place gasket.
- Internal threaded weld studs are provided for mounting subpanels.
- A bonding stud is provided on the door and a grounding stud is provided on the enclosure.

Finish

- Cover and enclosure are phosphatized and finished in ANSI 61 gray recoatable powder coating.

Listings

- UL 508A Type 3R, 4, 12 and 13 [UL File E65324]
- CSA Type 3R, 4, 12 and 13 [CSA File LR21001]
- Complies with
 - NEMA Type 3R, 4, 12 and 13
 - IEC 60529, IP66



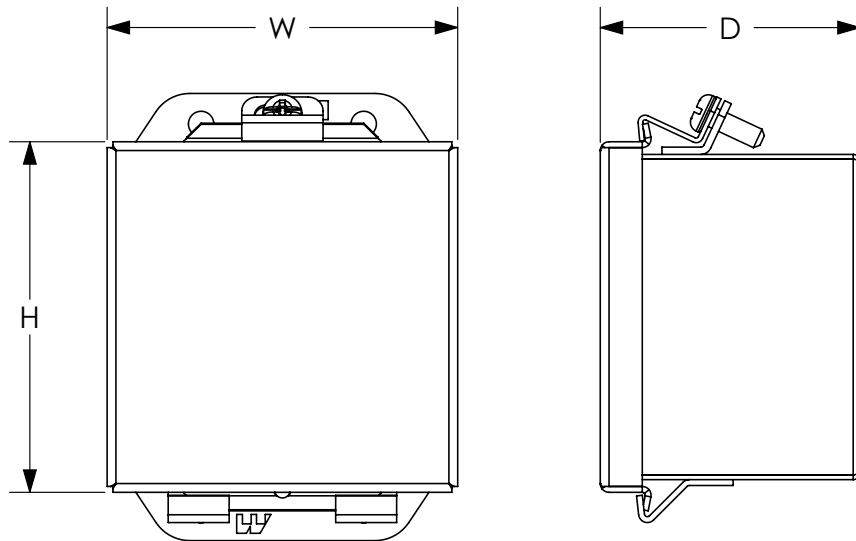
| NEMA 4 and 12 Lift-Off Cover Wall Mount | | | | | | |
|---|----------|---|-----------|----------|------------|-----------|
| Part Number | Price | Enclosure Size HxWxD | Subpanels | | | |
| | | | Painted | Aluminum | Galvanized | Stainless |
| HJ443LP | \$40.00 | 4.31 x 4.31 x 3.20 [109 x 109 x 81] | - | - | - | - |
| HJ444LP | \$42.00 | 4.31 x 4.31 x 4.20 [109 x 109 x 107] | - | - | - | - |
| HJ643LP | \$44.50 | 6.31 x 4.31 x 3.20 [160 x 109 x 81] | 14R0503 | 14A0503 | 14G0503 | 14R0503SS |
| HJ644LP | \$48.50 | 6.31 x 4.31 x 4.20 [160 x 109 x 107] | 14R0503 | 14A0503 | 14G0503 | 14R0503SS |
| HJ664LP | \$52.00 | 6.31 x 6.31 x 4.20 [160 x 160 x 107] | 14R0505 | 14A0505 | 14G0505 | 14R0505SS |
| HJ863LP | \$55.00 | 8.31 x 6.31 x 3.70 [211 x 160 x 94] | 14R0705 | 14A0705 | 14G0705 | 14R0705SS |
| HJ1084LP | \$69.00 | 10.31 x 8.31 x 4.20 [262 x 211 x 107] | 14R0907 | 14A0907 | 14G0907 | 14R0907SS |
| HJ12105LP | \$89.00 | 12.31 x 10.31 x 5.20 [313 x 262 x 132] | 14R1109 | 14A1109 | 14G1109 | 14R1109SS |
| HJ14126LP | \$115.00 | 14.31 x 12.31 x 6.20 [363 x 313 x 157] | 14R1311 | 14A1311 | 14G1311 | 14R1311SS |
| HJ14128LP | \$144.00 | 14.31 x 12.31 x 8.20 [363 x 313 x 208] | 14R1311 | 14A1311 | 14G1311 | 14R1311SS |
| HJ16146LP | \$136.00 | 16.31 x 14.31 x 6.20 [414 x 363 x 157] | 14R1513 | 14A1513 | 14G1513 | 14R1513SS |
| HJ161410LP | \$173.00 | 16.31 x 14.31 x 10.20 [414 x 363 x 259] | 14R1513 | 14A1513 | 14G1513 | 14R1513SS |

Note: Dimensions in inches [millimeters].

NEMA 4 and 12 Lift-Off Cover Wall Mount



Dimensions



See our website: www.AutomationDirect.com for complete engineering drawings.