

Disconnect Handle Applications for Wall Mount Disconnect Enclosures

Designed to house the following available at AutomationDirect.com



- AutomationDirect.com NEMA 1/12 Flexible shaft handle for Molded Case Circuit Breakers (MCCBs). Series F_SO_C flex handle mechanisms are available in four sizes to actuate all AutomationDirect MCCBs from 15 amps up to 600 amps. **F0S03C, F0S06C, F1S03C, F1S06C, F3S03C, F3S06C, F4S04C, and F4S06C.**
- Socomec Disconnect switches with cable, flange-mounted cable operator and handles. Handles **37299002** and **37299003**, cable operator **37299903**, and cables **37299992** (3ft) or **37299993** (5ft).
- Fuji Electric NEMA 12 flexible shaft handle for Molded Case Circuit Breakers (MCCBs). Series BW9F flex handle mechanisms are available in four sizes to actuate all Fuji Electric MCCBs from 15 Amps to 800 Amps. **BW9FOCA-15A, BW9FOCA-20A, BW9FOGA-15A, BW9FOGA-20A, BW9FOHA-15A, BW9FOHA-20A, BW9FOJA-15A, and BW9FOJA-20A.**

Disconnect Enclosure Series	Available at AutomationDirect.com		
	AutomationDirect F_SO_C Series	Socomec 37299002 & 37299003	Fuji BW9F Series
1447S_HK Series	✓	✓	✓
1447SN4 Series	✓	✓	✓
Eclipse Series	✓	✓	✓
Eclipse SS Series	✓	✓	✓
UHD_N4SS Series*	✓	✓	✓

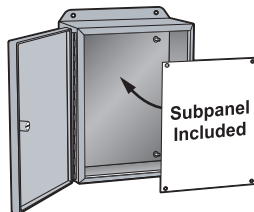
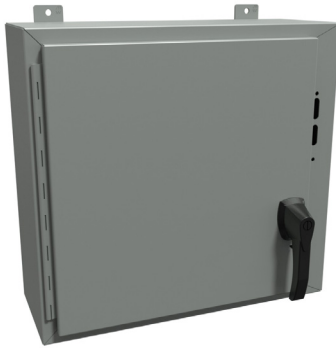
*Note: * "UHD_N4SS is a Freestanding Enclosure, not a Wall Mount.*

Designed to house other brands

- Allen-Bradley** Bulletin 1494V and 140U disconnect switches with flange-mounted variable-depth operating mechanisms and Bulletin 1494V flange-mounted variable-depth operating mechanisms for circuit breakers. These enclosures will not accept Allen-Bradley Bulletin 1494F disconnect devices or Bulletin 1494D circuit breaker operators.
- ABB Controls** flange-mounted variable-depth operating mechanisms for disconnect switches and circuit breakers.
- Eaton / Cutler-Hammer** Type C361 flange-mounted variable depth.
- Eaton / Cutler-Hammer** Type C361 flange-mounted variable-depth operating mechanisms with disconnect switches and Type C371 flange-mounted variable depth operating mechanisms for circuit breakers; also Flex Shaft™ handle mechanisms for circuit breakers.
- General Electric** Type STDA flange handles and variable depth operating.
- General Electric** Type STDA flange handles and variable depth operating mechanisms for disconnect switches and circuit breakers; also Spectra Flex™ cable operators for circuit breakers.
- SIEMENS** I-T-E Max-Flex flange-mounted variable depth operating handle for disconnect switches and circuit breakers.
- Square D** Class 9422 disconnect switches with flange-mounted variable depth operating mechanisms or cable Industry Standards mechanisms and Class 9422 flange-mounted variable depth operating mechanisms or cable mechanisms for circuit breakers. These enclosures will not accept Square D Class 9422 bracket-mounted disconnect devices, Class 9422TG1, or TG2 devices.

Disconnect Enclosures Series	Other Brands						
	Square D 9422 Series	Allen-Bradley 1494F & 1494D Series	Allen-Bradley 1494V & 140U Series	ABB Controls	Eaton/Cutler-Hammer C361 & C371 Series	General Electric STDA Series	Siemens I-T-E Max-Flex Series
1447S_HK Series	✓	✗	✓	✓	✓	✓	✓
1447SN4 Series	✓	✗	✓	✓	✓	✓	✓
Eclipse Series	✓	✗	✓	✓	✓	✓	✓
Eclipse SS Series	✓	✗	✓	✓	✓	✓	✓
UHD_N4SS Series	✓	✗	✓	✓	✓	✓	✓

NEMA 4, 12 and 13 Single-Door Wall Mount Disconnect with Defeater Handle



Applications

- Designed to house the following safety disconnect equipment:
- ABB Controls flange-mounted variable depth operating mechanism for disconnect switches and circuit breakers. Also cable version for circuit breakers.
- Allen Bradley 1494V variable depth flange mounted disconnect switches and circuit breaker operators. Will not accept Allen Bradley 1494F disconnect switches, 1494D circuit breaker operators.
- C-H Westinghouse C361 flange mounted variable depth operating mechanism with disconnect switches and C371 flange mounted variable depth operating mechanisms for circuit breakers. Also Flex-Shaft™ handle mechanisms for circuit breakers.
- General Electric Type STDA flange handles and variable depth operating mechanism for disconnect switches and circuit breakers. Also SpectraFlex™ cable operators for circuit breakers.
- Siemens I-T-E Max-Flex™ flange mounted variable depth handles for disconnect switches and circuit breakers.
- Square D class 9422 disconnect switches with flange mounted variable depth operating mechanisms or cable mechanisms and Class 9422 flange-mounted variable depth operating mechanisms or cable mechanisms for circuit breakers. Will not accept Square D Class 9422 bracket-mounted disconnect devices, 9422TG1 or TG2 devices

Construction

- Formed 14 gauge steel.
- Continuously welded seams.
- Larger sizes include door and body stiffeners.
- Welded brackets provide for enclosure mounting.
- Formed lip on enclosure exclude flowing liquids and contaminants.
- Seamless poured-in-place gasket.
- Cutouts and holes are provided to suit the flange handle operating mechanism.
- Continuously hinged doors may be removed by pulling the hinge pin.
- Padlocking defeater handle mechanism is provided along with latching rods and interlock brackets.
- Collar studs are provided for mounting subpanels.
- A removable 12 gauge subpanel is included.
- A bonding stud is provided on the door, and a grounding stud is provided in the enclosure.
- A literature pocket is provided.

Finish

- Cover and enclosure are finished in ANSI 61 gray powder coat finish inside and out.
- Subpanel finished in RAL 9003 white powder coat finish.

Listings

- UL 508A Type 4, 12 and 13 [UL File E65324]
- CSA Type 4, 12 and 13 [CSA File LR21001]
- Complies with
 - NEMA Type 4, 12 and 13
 - IEC 60529, IP66
- Appropriate components are required to maintain these standards.



NEMA 4, 12 and 13 Single-Door Wall Mount Disconnect with Defeater Handle



Shipping Schedule	
Same day	1 - 15 days
Color indicates shipping lead time in business days.	

Note: Disconnects, operating mechanisms are not provided with the enclosure and must be ordered separately from the manufacturer.

NEMA 4, 12 and 13 Single-Door Wall Mount Disconnect with Defeater Handle					
Part Number	Price	Enclosure Size HxWxD	Included Subpanel	Subpanel HxW	Padlocking Handle
1447SA8HK	\$480.00	20.00 x 21.38 x 8.88 [508 x 543 x 226]	18P1717	17.00 x 17.00in	2-Point
1447SA10HK	\$499.00	20.00 x 21.38 x 10.88 [508 x 543 x 276]	18P1717	17.00 x 17.00in	
1447SB8HK	\$518.00	24.00 x 21.38 x 8.88 [610 x 543 x 226]	18P2117	21.00 x 17.00in	
1447SB10HK	\$539.00	24.00 x 21.38 x 10.88 [610 x 543 x 276]	18P2117	21.00 x 17.00in	
1447SC8HK	\$557.00	24.00 x 25.38 x 8.88 [610 x 645 x 226]	18P2121	21.00 x 21.00in	
1447SC10HK	\$580.00	24.00 x 25.38 x 10.88 [610 x 645 x 276]	18P2121	21.00 x 21.00in	
1447SD8HK	\$569.00	30.00 x 21.38 x 8.88 [762 x 543 x 226]	18P2717	27.00 x 17.00in	
1447SD10HK	\$594.00	30.00 x 21.38 x 10.88 [762 x 543 x 276]	18P2717	27.00 x 17.00in	
1447SE8HK	\$616.00	30.00 x 25.38 x 8.88 [762 x 645 x 226]	18P2721	27.00 x 21.00in	
1447SE10HK	\$643.00	30.00 x 25.34 x 10.88 [762 x 644 x 276]	18P2721	27.00 x 21.00in	
1447SE12HK	\$668.00	30.00 x 25.38 x 12.88 [762 x 645 x 327]	18P2721	27.00 x 21.00in	
1447SF8HK	\$660.00	36.00 x 25.34 x 8.88 [914 x 644 x 226]	18P3321	33.00 x 21.00in	
1447SF10HK	\$705.00	36.00 x 25.34 x 10.88 [914 x 644 x 276]	18P3321	33.00 x 21.00in	
1447SG8HK	\$769.00	36.00 x 31.34 x 8.88 [914 x 796 x 226]	18P3327	33.00 x 27.00in	
1447SG10HK	\$802.00	36.00 x 31.34 x 10.88 [914 x 796 x 276]	18P3327	33.00 x 27.00in	
1447SG12HK	\$834.00	36.00 x 31.34 x 12.88 [914 x 796 x 327]	18P3327	33.00 x 27.00in	
1447SG16HK	\$898.00	36.00 x 31.34 x 16.88 [914 x 796 x 429]	18P3327	33.00 x 27.00in	
1447SH8HK	\$841.00	42.00 x 31.34 x 8.88 [1067 x 796 x 226]	18P3927	39.00 x 27.00in	
1447SH10HK	\$877.00	42.00 x 31.34 x 10.88 [1067 x 796 x 276]	18P3927	39.00 x 27.00in	
1447SH12HK	\$912.00	42.00 x 31.34 x 12.88 [1067 x 796 x 327]	18P3927	39.00 x 27.00in	
1447SH16HK	\$941.00	42.00 x 31.34 x 16.88 [1067 x 796 x 429]	18P3927	39.00 x 27.00in	
1447SJ8HK	\$937.00	42.00 x 37.38 x 8.88 [1067 x 949 x 226]	18P3933	39.00 x 33.00in	
1447SJ10HK	\$976.00	42.00 x 37.34 x 10.88 [1067 x 948 x 276]	18P3933	39.00 x 33.00in	
1447SJ12HK	\$1,014.00	42.00 x 37.34 x 12.88 [1067 x 948 x 327]	18P3933	39.00 x 33.00in	
1447SJ16HK	\$1,028.00	42.00 x 37.34 x 16.88 [1067 x 948 x 429]	18P3933	39.00 x 33.00in	
1447SQ10HK	\$944.00	48.00 x 25.30 x 10.88 [1219 x 643 x 276]	18P4521	45.00 x 21.00in	
1447SK8HK	\$1,022.00	48.00 x 37.34 x 8.88 [1219 x 948 x 948]	18P4533	45.00 x 33.00in	
1447SK10HK	\$1,063.00	48.00 x 37.30 x 10.88 [1219 x 947 x 276]	18P4533	45.00 x 33.00in	
1447SK12HK	\$1,105.00	48.00 x 37.34 x 12.88 [1219 x 948 x 327]	18P4533	45.00 x 33.00in	
1447SK16HK	\$1,186.00	48.00 x 37.34 x 16.88 [1219 x 948 x 429]	18P4533	45.00 x 33.00in	
1447SL8HK	\$1,190.00	60.00 x 37.34 x 8.88 [1524 x 948 x 226]	18P5733	57.00 x 33.00in	
1447SL10HK	\$1,237.00	60.00 x 37.30 x 10.88 [1524 x 947 x 276]	18P5733	57.00 x 33.00in	
1447SL12HK	\$1,281.00	60.00 x 37.30 x 12.88 [1524 x 947 x 327]	18P5733	57.00 x 33.00in	
1447SL16HK	\$1,374.00	60.00 x 37.30 x 16.88 [1524 x 947 x 429]	18P5733	57.00 x 33.00in	
Note: Dimensions in inches [millimeters].					

NEMA 4, 12 and 13 Single-Door Wall Mount Disconnect with Defeater Handle



Shipping Schedule	
Same day	1 - 15 days
Color indicates shipping lead time in business days.	

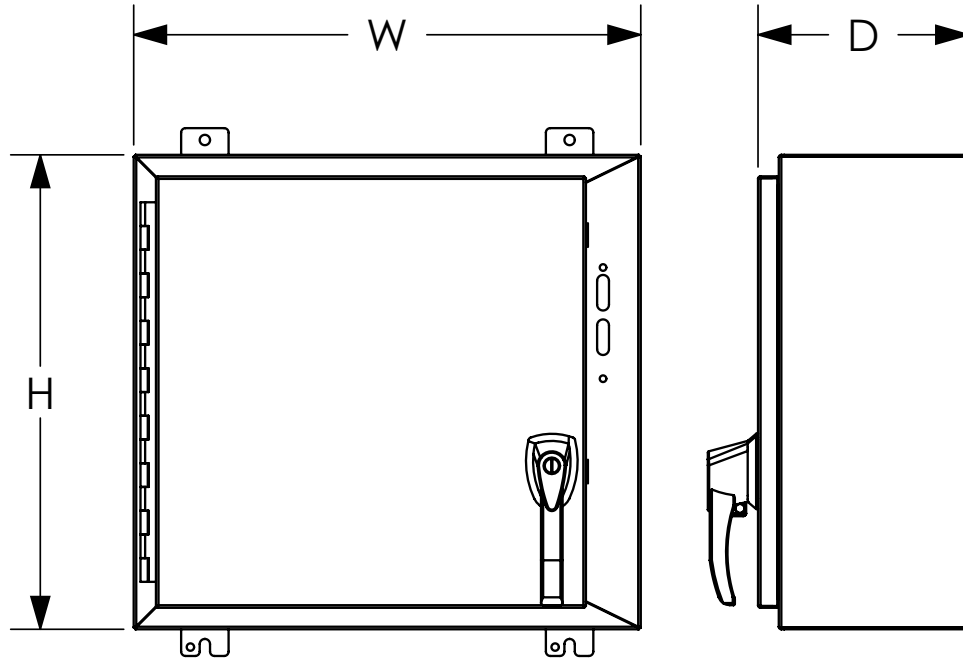
NEMA 4, 12 and 13 Single-Door Wall Mount Disconnect with Defeater Handle				
Part Number	Optional Subpanels			
	Perforated	Aluminum	Galvanized	Stainless
1447SA8HK	18P1717PP	18A1717	18G1717	18P1717S16
1447SA10HK	18P1717PP	18A1717	18G1717	18P1717S16
1447SB8HK	18P2117PP	18A2117	18G2117	18P2117S16
1447SB10HK	18P2117PP	18A2117	18G2117	18P2117S16
1447SC8HK	18P2121PP	18A2121	18G2121	18P2121S16
1447SC10HK	18P2121PP	18A2121	18G2121	18P2121S16
1447SD8HK	-	-	18G2717	18P2717S16
1447SD10HK	-	-	18G2717	18P2717S16
1447SE8HK	18P2721PP	18A2721	18G2721	18P2721S16
1447SE10HK	18P2721PP	18A2721	18G2721	18P2721S16
1447SE12HK	18P2721PP	18A2721	18G2721	18P2721S16
1447SF8HK	18P3321PP	18A3321	18G3321	18P3321S16
1447SF10HK	18P3321PP	18A3321	18G3321	18P3321S16
1447SG8HK	18P3327PP	18A3327	18G3327	18P3327S16
1447SG10HK	18P3327PP	18A3327	18G3327	18P3327S16
1447SG12HK	18P3327PP	18A3327	18G3327	18P3327S16
1447SG16HK	18P3327PP	18A3327	18G3327	18P3327S16
1447SH8HK	-	-	18G3927	18P3927S16
1447SH10HK	-	-	18G3927	18P3927S16
1447SH12HK	-	-	18G3927	18P3927S16
1447SH16HK	-	-	18G3927	18P3927S16
1447SJ8HK	-	-	18G3933	18P3933S16
1447SJ10HK	-	-	18G3933	18P3933S16
1447SJ12HK	-	-	18G3933	18P3933S16
1447SJ16HK	-	-	18G3933	18P3933S16
1447SQ10HK	-	-	18G4521	-
1447SK8HK	-	18A4533	18G4533	18P4533S16
1447SK10HK	-	18A4533	18G4533	18P4533S16
1447SK12HK	-	18A4533	18G4533	18P4533S16
1447SK16HK	-	18A4533	18G4533	18P4533S16
1447SL8HK	-	18A5733	18G5733	18P5733S16
1447SL10HK	-	18A5733	18G5733	18P5733S16
1447SL12HK	-	18A5733	18G5733	18P5733S16
1447SL16HK	-	18A5733	18G5733	18P5733S16

Note: Dimensions in inches [millimeters].

NEMA 4, 12 and 13 Single-Door Wall Mount Disconnect with Defeater Handle



Dimensions



See our website: www.AutomationDirect.com for complete engineering drawings.