

NEMA 3R, 4, 4X, 12 and 13 Stainless Steel Lift-off Cover Wall Mount

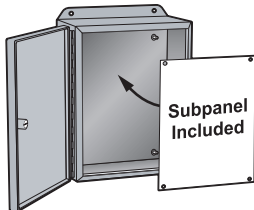
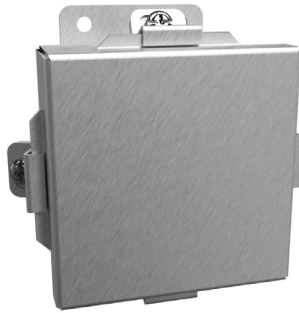


Applications

- Designed for use as instrument enclosures, electric, hydraulic or pneumatic control housings, electrical junction boxes or terminal wiring enclosures.
- Provides protection where equipment may be hosed down or otherwise be very wet, or in specific applications where corrosion may be a problem.

Finish

- Cover and enclosure are natural stainless steel with a smooth #4 brushed finish.
- Removable subpanel is finished in RAL 9003 white powder coating.



Construction

- Formed from 14 gauge 304 stainless steel.
- Smooth, continuously welded seams.
- Welded brackets provide for enclosure mounting.
- Lift-off cover is secured with stainless steel clamps and screws.
- Seamless poured-in-place gasket.
- All models larger than 4 x 4in include a removable 14 gauge subpanel.
- Tapped studs are provided for mounting subpanels.
- A bonding stud is provided on the door, and a grounding stud is provided in the enclosure.

Listings

- UL 508A Type 3R, 4, 4X, 12, and 13 [UL File E65324]
- CSA Type 3R, 4, 4X, 12, and 13 [CSA File LR21001]
- Complies with
 - NEMA Type 3R, 4, 4X, 12, and 13
 - IEC 60529, IP66



Shipping Schedule	
Same day	1 - 15 days
Color indicates shipping lead time in business days.	

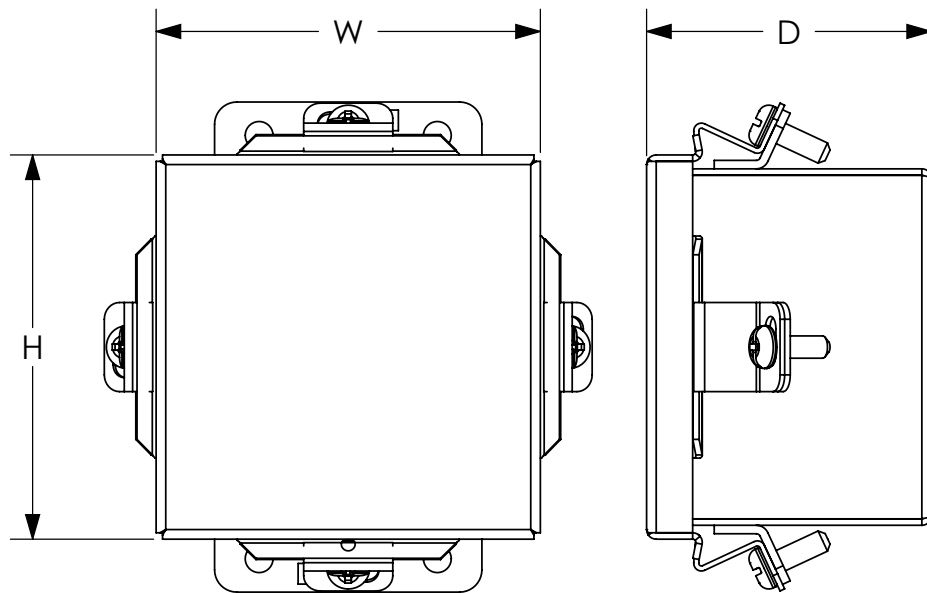
NEMA 3R, 4, 4X, 12 and 13 Stainless Steel Lift-off Cover Wall Mount								
Part Number	Price	Enclosure Size HxWxD	Included Subpanel	Subpanel HxW	Optional Subpanels			
					Aluminum	Galvanized	Stainless	
1414N4SSA	\$110.00	4.31 x 4.31 x 3.20 [109 x 109 x 81]	—	—	—	—	—	—
1414N4SSC4	\$144.00	6.31 x 4.31 x 4.20 [160 x 109 x 107]	14R0503	4.88 x 2.88in	14A0503	14G0503	14R0503SS	
1414N4SSE	\$164.00	6.31 x 6.31 x 4.20 [160 x 160 x 107]	14R0505	4.88 x 4.88in	14A0505	14G0505	14R0505SS	
1414N4SSG	\$189.00	8.31 x 6.31 x 3.70 [211 x 160 x 94]	14R0705	6.75 x 4.88in	14A0705	14G0705	14R0705SS	
1414N4SSI	\$232.00	10.31 x 8.31 x 4.20 [262 x 211 x 107]	14R0907	8.75 x 6.88in	14A0907	14G0907	14R0907SS	
1414N4SSK	\$329.00	12.31 x 10.31 x 5.20 [313 x 262 x 132]	14R1109	10.75 x 8.88in	14A1109	14G1109	14R1109SS	
1414N4SSM6	\$413.00	14.31 x 12.31 x 6.20 [363 x 313 x 157]	14R1311	12.75 x 10.88in	14A1311	14G1311	14R1311SS	
1414N4SSO6	\$495.00	16.31 x 14.31 x 6.20 [414 x 363 x 157]	14R1513	14.75 x 12.88in	14A1513	14G1513	14R1513SS	

Note: Dimensions in inches [millimeters].

NEMA 3R, 4, 4X, 12 and 13 Stainless Steel Lift-off Cover Wall Mount



Dimensions



See our website: www.AutomationDirect.com for complete engineering drawings.