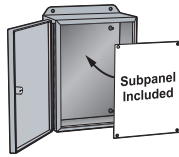
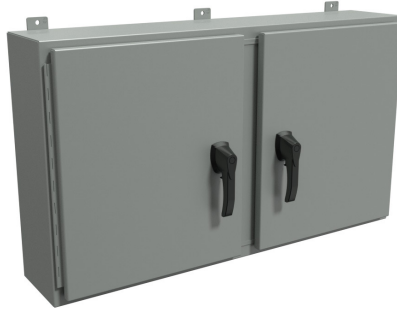


# NEMA 3R, 4 and 12 Double-Door Wall Mount



## Applications

- Designed to house electrical, electronic, hydraulic or pneumatic controls and instruments.
- Provides protection where equipment may be hosed down or otherwise be very wet, or in outdoor applications for full weather protection.

## Construction

- Formed 12 gauge steel
- Smooth, continuously welded seams without knockouts, cutouts or holes.
- Doors are supported with heavy gauge continuous hinges.
- 3-pt padlocking door handle.
- Seamless poured-in-place gasket.
- A grounding stud is provided in the enclosure, and a bonding stud is provided on the door.
- Center post is removable for easy installation of the subpanel.

## Finish

- Cover and enclosure are phosphatized and finished in recoatable smooth ANSI 61 gray powder coating.
- Removable subpanel is finished in RAL 9003 white powder coating.

## Listings

- UL 508A Type 3R, 4 and 12 [UL File E65324]
- CSA Type 3R, 4 and 12 [CSA File LR21001]
- Complies with
  - NEMA Type 3R, 4, 12 and 13
  - IEC 60529, IP66



Shipping Schedule	
Same day	1 - 15 days

Color indicates shipping lead time in business days.

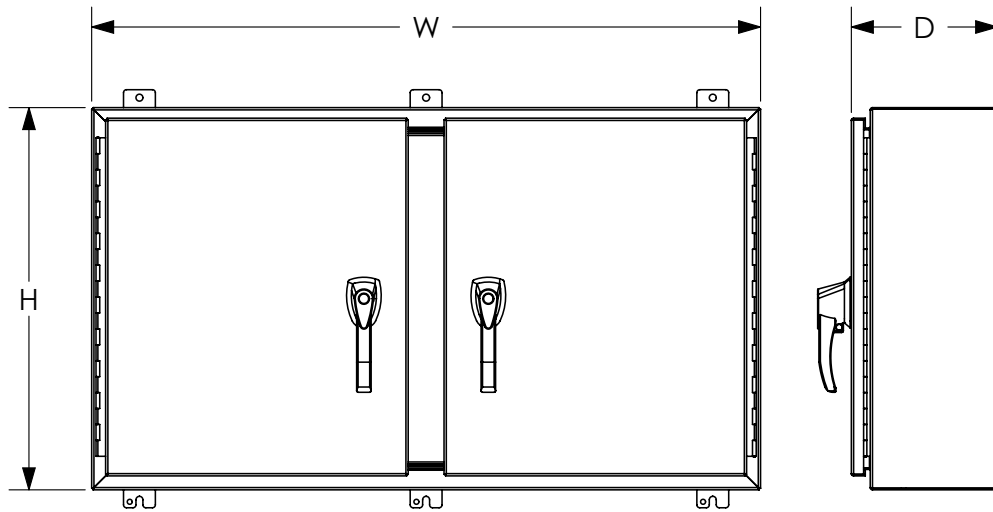
NEMA 3R, 4 and 12 Double-Door Wall-Mount							
Part Number	Price	Enclosure Size HxWxD	Optional Subpanels				
			Painted (included)	Aluminum	Galvanized	Stainless	Dimensions
HN4WM24428GY	\$926.00	24.00 x 42.00 x 9.09 [610 x 1067 x 231]	18P3921	-	18G3921	-	39.00 x 21.00 [991 x 533]
HN4WM24488GY	\$1,010.00	24.00 x 48.00 x 9.09 [610 x 1219 x 231]	18P4521	-	18G4521	-	45.00 x 21.00 [1143 x 533]
HN4WM304210GY	\$1,123.00	30.00 x 42.00 x 11.09 [762 x 1067 x 282]	18P3927	-	18G3927	18P3927S16	39.00 x 27.00 [991 x 686]
HN4WM304810GY	\$1,228.00	30.00 x 48.00 x 11.09 [762 x 1219 x 282]	18P4527	-	18G4527	-	45.00 x 27.00 [1143 x 686]
HN4WM306010GY	\$1,472.00	30.00 x 60.00 x 11.09 [762 x 1524 x 282]	-	-	-	-	57.00 x 27.00 [1448 x 686]
HN4WM364212GY	\$1,347.00	36.00 x 42.00 x 13.09 [914 x 1067 x 332]	18P3933	-	18G3933	18P3933S16	39.00 x 33.00 [991 x 838]
HN4WM364812GY	\$1,442.00	36.00 x 48.00 x 13.09 [914 x 1219 x 332]	18P4533	18A4533	18G4533	18P4533S16	45.00 x 33.00 [1143 x 838]
HN4WM366012GY	\$1,693.00	36.00 x 60.00 x 13.09 [914 x 1524 x 332]	18P5733	18A5733	18G5733	18P5733S16	57.00 x 33.00
HN4WM424212GY	\$1,493.00	42.00 x 42.00 x 13.09 [1067 x 1067 x 332]	-	-	-	-	39.00 x 39.00 [991 x 991]
HN4WM424812GY	\$1,639.00	42.00 x 48.00 x 13.09 [1067 x 1219 x 332]	-	-	-	-	45.00 x 39.00 [1143 x 991]
HN4WM426012GY	\$1,903.00	42.00 x 60.00 x 13.09 [1067 x 1524 x 332]	-	-	-	-	57.00 x 39.00 [1448 x 991]
HN4WM484812GY	\$1,779.00	48.00 x 48.00 x 13.09 [1219 x 1219 x 332]	-	-	-	-	45.00 x 45.00 [1143 x 1143]

Note: Dimensions in inches [millimeters].

# NEMA 3R, 4 and 12 Double-Door Wall Mount



## Dimensions



*See our website: [www.AutomationDirect.com](http://www.AutomationDirect.com) for complete engineering drawings.*