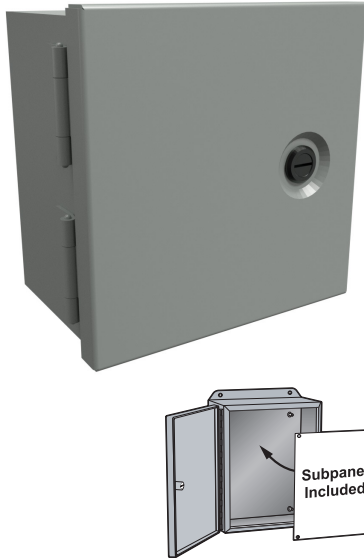


# NEMA 1 Small Single-Door Wall Mount with 1/4-Turn Latch



## Applications

- Designed for indoor use to house controls, instruments and components not requiring oil-tight or dust-tight protection.

## Construction

- Formed and spot welded from 16 gauge steel.
- Formed steel covers close by use of slotted 1/4-turn latch.
- Full swing door using butt hinges.
- Through holes in back for wall mounting.
- Bonding stud is provided on the door and a grounding stud is provided on the box.
- Includes 14 gauge steel subpanel.

## Finish

- Enclosure and cover are finished in ANSI 61 gray powder coating.
- Subpanel is finished in RAL9003 white powder coating

## Listings

- UL-50 Type 1 [UL File E65324]
- CSA Type 1 [CSA File LR21001]
- Complies with
  - NEMA Type 1
  - IEC 60529, IP20



### Shipping Schedule

Same day 1 - 15 days

Color indicates shipping lead time in business days.

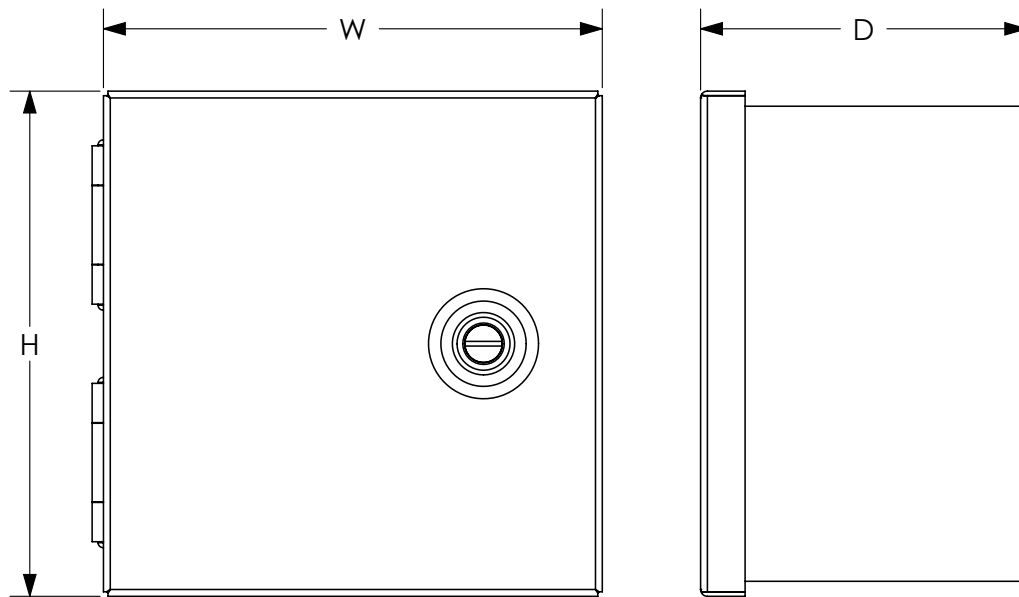
NEMA 1 Small Single-Door Wall Mount with 1/4-Turn Latch					
Part Number	Price	Enclosure Size HxWxD	Included Subpanel	Subpanel Dimensions	Optional Subpanel Perforated
N1J664	\$43.00	6.38 x 6.30 x 4.12 [162 x 160 x 105]	N1JP66	4.25 x 4.25in [108 x 108]	N1JP66PP
N1J864	\$47.50	8.38 x 6.30 x 4.12 [213 x 160 x 105]	N1JP86	6.25 x 4.25in [159 x 108]	N1JP86PP
N1J884	\$53.00	8.38 x 8.30 x 4.12 [213 x 211 x 105]	N1JP88	6.25 x 6.25in [159 x 159]	N1JP88PP
N1J886	\$59.00	8.38 x 8.30 x 6.12 [213 x 211 x 155]	N1JP88	6.25 x 6.25in [159 x 159]	N1JP88PP
N1J1084	\$58.00	10.38 x 8.30 x 4.12 [264 x 211 x 105]	N1JP108	8.25 x 6.25in [210 x 159]	N1JP108PP
N1J1086	\$65.00	10.38 x 8.30 x 6.12 [264 x 211 x 155]	N1JP108	8.25 x 6.25in [210 x 159]	N1JP108PP
N1J10104	\$65.00	10.38 x 10.30 x 4.12 [264 x 262 x 105]	N1JP1010	8.25 x 8.25in [210 x 210]	N1JP1010PP
N1J10106	\$73.00	10.38 x 10.30 x 6.12 [264 x 262 x 155]	N1JP1010	8.25 x 8.25in	N1JP1010PP
N1J12104	\$71.00	12.38 x 10.30 x 4.12 [314 x 262 x 105]	N1JP1210	10.25 x 8.25in [260 x 210]	N1JP1210PP
N1J12106	\$80.00	12.38 x 10.30 x 6.12 [314 x 262 x 155]	N1JP1210	10.25 x 8.25in [260 x 210]	N1JP1210PP
N1J12124	\$79.00	12.38 x 12.30 x 4.12 [314 x 312 x 105]	N1JP1212	10.25 x 10.25in [260 x 260]	N1JP1212PP
N1J12126	\$89.00	12.38 x 12.30 x 6.12 [314 x 312 x 155]	N1JP1212	10.25 x 10.25in [260 x 260]	N1JP1212PP
N1J12128	\$98.00	12.38 x 12.30 x 8.12 [314 x 312 x 206]	N1JP1212	10.25 x 10.25in [260 x 260]	N1JP1212PP
N1J14124	\$87.00	14.38 x 12.30 x 4.12 [365 x 312 x 105]	N1JP1412	12.25 x 10.25in [311 x 260]	N1JP1412PP
N1J14126	\$97.00	14.38 x 12.30 x 6.12 [365 x 312 x 155]	N1JP1412	12.25 x 10.25in [311 x 260]	N1JP1412PP
N1J14128	\$107.00	14.38 x 12.30 x 8.12 [365 x 312 x 206]	N1JP1412	12.25 x 10.25in [311 x 260]	N1JP1412PP
N1J16126	\$105.00	16.38 x 12.30 x 6.12 [416 x 312 x 155]	N1JP1612	14.25 x 10.25in [362 x 260]	N1JP1612PP
N1J20126	\$122.00	20.38 x 12.30 x 6.12 [518 x 312 x 155]	N1JP2012	18.25 x 10.25in [463 x 260]	N1JP2012PP

Note: Dimensions in inches [millimeters]

# NEMA 1 Small Single-Door Wall Mount with 1/4-Turn Latch



## Dimensions



*See our website: [www.AutomationDirect.com](http://www.AutomationDirect.com) for complete engineering drawings.*