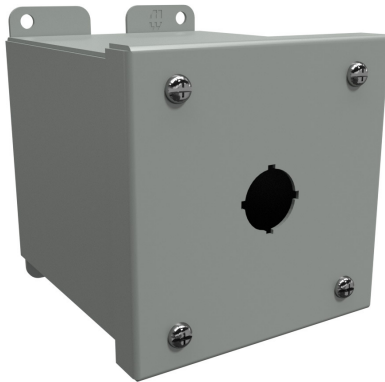


# NEMA 12 and 13 Extra Deep Pushbutton



## Applications

- Designed to accept standard heavy duty oil-tight pushbuttons, switches and pilot lights.
- Provides protection from dirt, dust, oil and water.

## Construction

- Smooth continuously welded seams.
- Welded brackets provide for enclosure mounting.
- Captive cover screws fasten into threaded, sealed wells.
- Larger enclosures provide internally hinged removable covers, designed to hold the cover open during wiring (see drawings).
- Oil-resistant gasket and adhesive.
- A bonding stud is provided on the door and a grounding stud is provided on the enclosure.

## Listings

- UL 508A Type 12 and 13 [UL File E65324]
- CSA Type 12 and 13 [CSA File LR21001]
- Complies with
  - NEMA Type 12 and 13
  - IEC 60529, IP54
- All appropriate components are required to maintain these standards.

Shipping Schedule	
Same day	1 - 15 days
Color indicates shipping lead time in business days.	



## Finish

- Cover and enclosure are phosphatized and finished in ANSI 61 gray powder coating.

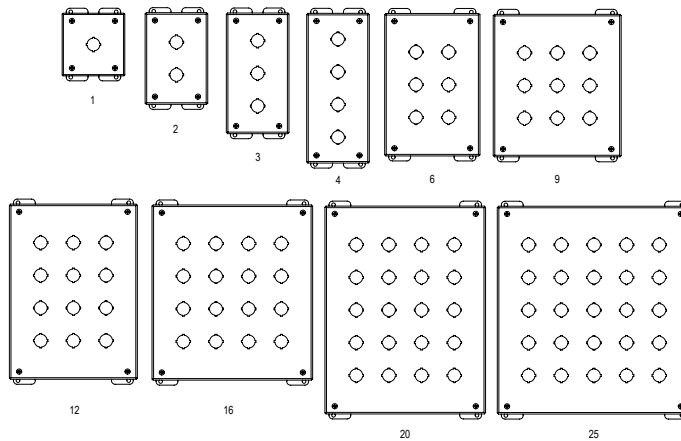
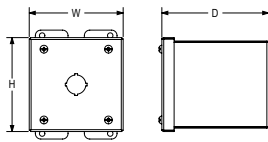
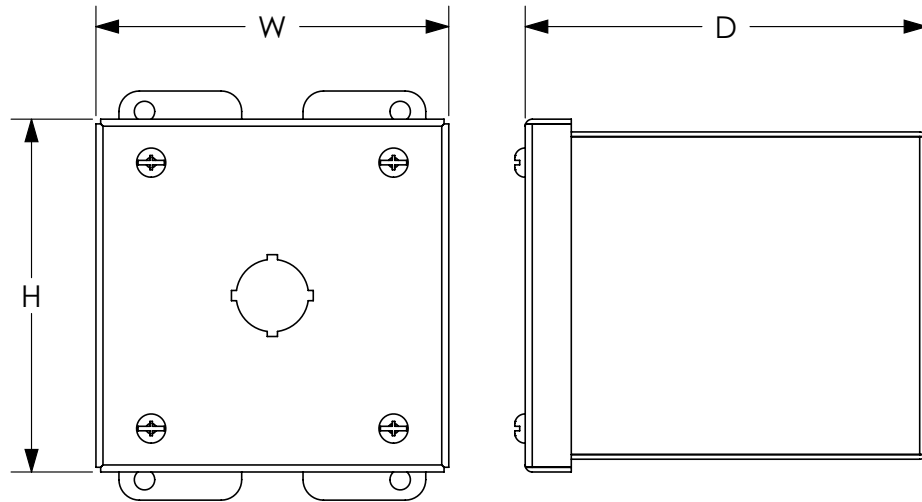
NEMA 12 and 13 Extra Deep Pushbutton							
22mm	Price	30mm	Price	Size HxWxD	# Holes	Steel Gauge	Hinged
<b>1437MA</b>	\$62.00	<b>1437A</b>	\$64.00	4.31 x 4.31 x 4.91 [109 x 109 x 125]	1	14	No
<b>1437MB</b>	\$72.00	<b>1437B</b>	\$74.00	6.31 x 4.31 x 4.97 [160 x 109 x 126]	2		
<b>1437MC</b>	\$81.00	<b>1437C</b>	\$83.00	8.31 x 4.31 x 4.97 [211 x 109 x 126]	3		
<b>1437MD</b>	\$90.00	<b>1437D</b>	\$92.00	10.31 x 4.31 x 4.97 [262 x 109 x 126]	4		
<b>1437MF</b>	\$92.00	<b>1437F</b>	\$95.00	7.56 x 6.56 x 4.97 [192 x 167 x 126]	4		
<b>1437MH</b>	\$105.00	<b>1437H</b>	\$108.00	9.81 x 6.56 x 4.97 [249 x 167 x 126]	6		
<b>1437MK</b>	\$120.00	<b>1437K</b>	\$123.00	9.81 x 8.81 x 4.97 [249 x 224 x 126]	9		
<b>1437MO</b>	\$137.00	<b>1437O</b>	\$141.00	12.06 x 8.81 x 4.92 [306 x 224 x 125]	12		
<b>1437MS</b>	\$156.00	<b>1437S</b>	\$161.00	12.06 x 11.06 x 4.92 [306 x 281 x 125]	16		
<b>1437MV</b>	\$175.00	<b>1437V</b>	\$180.00	14.31 x 11.06 x 4.92 [363 x 281 x 125]	20		
<b>1437MX</b>	\$197.00	<b>1437X</b>	\$202.00	14.31 x 13.31 x 4.92 [363 x 338 x 125]	25		

Note: Dimensions in inches [millimeters]

# NEMA 12 and 13 Extra Deep Pushbutton



## Dimensions



See our website: [www.AutomationDirect.com](http://www.AutomationDirect.com) for complete engineering drawings.