

# NEMA 4, 4X, & 12 Stainless Steel Pull-Through Wireway



## Features

- Designed to enclose and protect electrical wiring from dirt, dust, oil and water.
- Ideal for connecting machines to control panels or power sources.



## Construction

- Bodies and covers are formed from 14-gauge 304 steel with 10-gauge steel flanges.
- Continuous flange around wireway ends, requires cables to be pulled through.
- Smooth continuously welded seams.
- Interior surfaces are smooth to prevent wire damage during installation.
- Butt-hinged cover is secured with easily operated screw clamps.
- Solid, oil-resistant gaskets are permanently secured between flanges when sections and fittings are bolted together.
- One gasket kit, complete with hardware is provided with each straight section or fitting.
- Sections and fittings are natural stainless steel with a smooth brushed finish.

E186830]

- CSA Type 1 (unless marked) [File LL21312]
- Complies with
  - NEMA Type 4, 4X and 12
  - IEC 60529, IP66



## Listings

- UL 870 Type 1 (unless marked) [File

Shipping Schedule	
Same day	1 - 15 days
Color indicates shipping lead time in business days.	

NEMA 4, 4X, & 12 Stainless Steel Pull-Through Wireway			
Part Number	Price	Size HxW	Drawing Link
<b>1487C12SS</b>	\$240.00	4 x 4 x 12 [102 x 102 x 305]	<a href="#">PDF</a>
<b>1487C24SS</b>	\$297.00	4 x 4 x 24 [102 x 102 x 610]	<a href="#">PDF</a>
<b>1487C36SS</b>	\$362.00	4 x 4 x 36 [102 x 102 x 914]	<a href="#">PDF</a>
<b>1487C48SS</b>	\$425.00	4 x 4 x 48 [102 x 102 x 1219]	<a href="#">PDF</a>
<b>1487C60SS</b>	\$491.00	4 x 4 x 60 [102 x 102 x 1524]	<a href="#">PDF</a>
<b>1487C120SS</b>	\$816.00	4 x 4 x 120 [102 x 102 x 3048]	<a href="#">PDF</a>
<b>1487D12SS</b>	\$305.00	6 x 6 x 12 [152 x 152 x 305]	<a href="#">PDF</a>
<b>1487D24SS</b>	\$398.00	6 x 6 x 24 [152 x 152 x 610]	<a href="#">PDF</a>
<b>1487D36SS</b>	\$502.00	6 x 6 x 36 [152 x 152 x 914]	<a href="#">PDF</a>
<b>1487D48SS</b>	\$604.00	6 x 6 x 48 [152 x 152 x 1219]	<a href="#">PDF</a>
<b>1487D60SS</b>	\$707.00	6 x 6 x 60 [152 x 152 x 1524]	<a href="#">PDF</a>
<b>1487D120SS</b>	\$1,222.00	6 x 6 x 120 [152 x 152 x 3048]	<a href="#">PDF</a>
<b>1487E12SS</b>	\$337.00	8 x 8 x 12 [203 x 203 x 305]	<a href="#">PDF</a>
<b>1487E24SS</b>	\$440.00	8 x 8 x 24 [203 x 203 x 610]	<a href="#">PDF</a>
<b>1487E36SS</b>	\$554.00	8 x 8 x 36 [203 x 203 x 914]	<a href="#">PDF</a>
<b>1487E48SS</b>	\$668.00	8 x 8 x 48 [203 x 203 x 1219]	<a href="#">PDF</a>
<b>1487E60SS</b>	\$780.00	8 x 8 x 60 [203 x 203 x 1524]	<a href="#">PDF</a>
<b>1487E120SS</b>	\$1,350.00	8 x 8 x 120 [203 x 203 x 3048]	<a href="#">PDF</a>

# NEMA 4, 4X, & 12 304 Stainless Steel Pull-Through Wireway Hangers



Shipping Schedule	
Same day	1 - 15 days
Color indicates shipping lead time in business days.	



Drop Hangers			
Part Number	Price	Wireway Size	Drawing Link
1487CL1SS	\$47.50	4 x 4 [102 x 102]	<a href="#">PDF</a>
1487DL1SS	\$65.00	6 x 6 [152 x 152]	<a href="#">PDF</a>
1487EL1SS	\$71.00	8 x 8 [203 x 203]	<a href="#">PDF</a>



Bracket Hangers			
Part Number	Price	Wireway Size	Drawing Link
1487CL2SS	\$31.00	4 x 4 [102 x 102]	<a href="#">PDF</a>
1487DL2SS	\$43.00	6 x 6 [152 x 152]	<a href="#">PDF</a>
1487EL2SS	\$47.50	8 x 8 [203 x 203]	<a href="#">PDF</a>

# NEMA 4, 4X, & 12 Stainless Steel Pull-Through Wireway Fittings



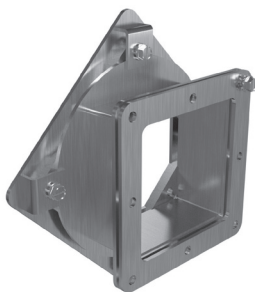
Partition Kit			
Part Number	Price	Wireway Size	Drawing Link
<b>1487CB60</b>	\$40.00	4 x 4 x 60 [102 x 102 x 1524]	<a href="#">PDF</a>
<b>1487DB60</b>	\$49.00	6 x 6 x 60 [152 x 152 x 1524]	<a href="#">PDF</a>
<b>1487EB60</b>	\$66.00	8 x 8 x 60 [203 x 203 x 1524]	<a href="#">PDF</a>

## Features

- Made of Carbon Steel painted ANSI 61 Gray
- Divides Wireway into two or more compartments.
- Barriers are fastened to wireway sections with screws.
- Does not meet CSA or UL requirements.



Nipple			
Part Number	Price	Overall Size HxWxD	Drawing Link
<b>1487CM6SS</b>	\$165.00	4 x 4 x 6 [102 x 102 x 152]	<a href="#">PDF</a>
<b>1487DM6SS</b>	\$210.00	6 x 6 x 6 [152 x 152 x 152]	<a href="#">PDF</a>
<b>1487EM6SS</b>	\$232.00	8 x 8 x 6 [203 x 203 x 152]	<a href="#">PDF</a>



Swivel Nipple			
Part Number	Price	Size HxWxD	Drawing Link
<b>1487CV2SS</b>	\$241.00	6 x 6 x 2.25 [152 x 152 x 57]	<a href="#">PDF</a>
<b>1487DV2SS</b>	\$323.00	4 x 4 x 2.25 [102 x 102 x 57]	<a href="#">PDF</a>
<b>1487EV2SS</b>	\$355.00	8 x 8 x 2.25 [203 x 203 x 57]	<a href="#">PDF</a>



Flexible Fitting			
Part Number	Price	Overall Size HxWxD	Drawing Link
<b>1487CFSS</b>	\$383.00	4 x 4 [102 x 102]	<a href="#">PDF</a>
<b>1487DFSS</b>	\$483.00	6 x 6 [152 x 152]	<a href="#">PDF</a>
<b>1487EFSS</b>	\$535.00	8 x 8 [203 x 203]	<a href="#">PDF</a>

## Features

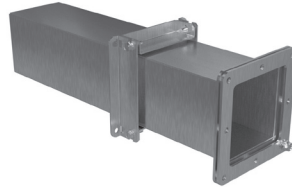
- Allows for easy alignment of sections or fittings.
- Metal flanges.
- Flexible "bellows" middle section.

# NEMA 4, 4X, & 12 Stainless Steel Pull-Through Wireway Fittings

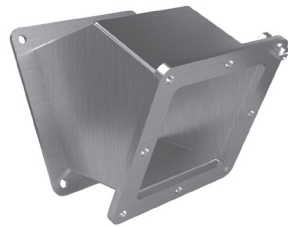


## Features

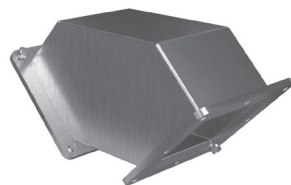
- Allows on site length adjustment of 1.5in to 13.5in. [38mm to 343mm]
- Does not meet CSA or UL requirements.



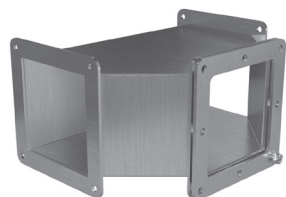
Adjustable Fitting			
Part Number	Price	Wireway Size	Drawing Link
<b>1487CXSS</b>	\$244.00	4 x 4	<a href="#">PDF</a>
<b>1487DXSS</b>	\$298.00	6 x 6	<a href="#">PDF</a>
<b>1487EXSS</b>	\$330.00	8 x 8	<a href="#">PDF</a>



45° Elbow			
Part Number	Price	Wireway Size	Drawing Link
<b>1487C4PSS</b>	\$226.00	4 x 4	<a href="#">PDF</a>
<b>1487D4PSS</b>	\$277.00	6 x 6	<a href="#">PDF</a>
<b>1487E4PSS</b>	\$306.00	8 x 8	<a href="#">PDF</a>



90° Elbow			
Part Number	Price	Wireway Size	Drawing Link
<b>1487C9PSS</b>	\$219.00	4 x 4	<a href="#">PDF</a>
<b>1487D9PSS</b>	\$270.00	6 x 6	<a href="#">PDF</a>
<b>1487E9PSS</b>	\$297.00	8 x 8	<a href="#">PDF</a>



Tee Fitting			
Part Number	Price	Wireway Size	Drawing Link
<b>1487CTSS</b>	\$263.00	4 x 4	<a href="#">PDF</a>
<b>1487DTSS</b>	\$374.00	6 x 6	<a href="#">PDF</a>
<b>1487ETSS</b>	\$413.00	8 x 8	<a href="#">PDF</a>

# NEMA 4, 4X, & 12 Stainless Steel Pull-Through Wireway Fittings

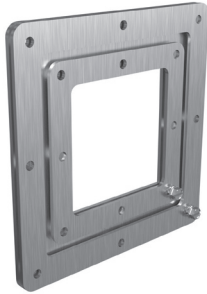


Box Connector			
<i>Part Number</i>	<i>Price</i>	<i>Wireway Size</i>	<i>Drawing Link</i>
<b>1487CKSS</b>	\$46.50	4 x 4	<a href="#">PDF</a>
<b>1487DKSS</b>	\$58.00	6 x 6	<a href="#">PDF</a>
<b>1487EKSS</b>	\$65.00	8 x 8	<a href="#">PDF</a>



Cover Plate			
<i>Part Number</i>	<i>Price</i>	<i>Wireway Size</i>	<i>Drawing Link</i>
<b>1487CHSS</b>	\$42.50	4 x 4	<a href="#">PDF</a>
<b>1487DHSS</b>	\$51.00	6 x 6	<a href="#">PDF</a>
<b>1487EHSS</b>	\$56.00	8 x 8	<a href="#">PDF</a>

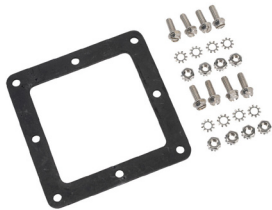
# NEMA 4, 4X, & 12 Stainless Steel Pull-Through Wireway Fittings and Accessories



Center Hole Reducers			
Part Number	Price	Wireway Size	Drawing Link
<b>1487DRCSS</b>	\$105.00	6 x 6 to 4 x 4	<a href="#">PDF</a>
<b>1487ERCDS</b>	\$116.00	8 x 8 to 6 x 6	<a href="#">PDF</a>
<b>1487ERCCS</b>	\$116.00	8 x 8 to 4 x 4	<a href="#">PDF</a>



Edge Hole Wireway Reducers			
Part Number	Price	Wireway Size	Drawing Link
<b>1487ERECSS</b>	\$116.00	8 x 8 to 4 x 4	<a href="#">PDF</a>
<b>1487EREDSS</b>	\$116.00	8 x 8 to 6 x 6	<a href="#">PDF</a>
<b>1487DRESS</b>	\$105.00	6 x 6 to 4 x 4	<a href="#">PDF</a>



Gaskets & Screws			
Part Number	Price	Wireway Size	Drawing Link
<b>1487CS</b>	\$12.25	4 x 4	<a href="#">PDF</a>
<b>1487DS</b>	\$16.25	6 x 6	<a href="#">PDF</a>
<b>1487ES</b>	\$18.00	8 x 8	<a href="#">PDF</a>

*Note: Does not meet CSA or UL requirements*