

NEMA 12 Lay-In Wireway

Features

- Designed to enclose and protect electrical wiring from dirt, dust, oil and water.
- All sections and fittings are completely open on each side to allow wires and cables to be placed into the wireway without "pulling through".

Construction

- Bodies and covers are formed from 14-gauge steel with 10-gauge steel flanges.
- Top-open flanges allow cables to lay inside when doors open.
- 12in x 6in size has a 12-gauge steel body with a 14-gauge cover.
- Smooth, continuously welded seams.
- Interior surfaces are smooth to prevent wire damage during installation.
- Butt-hinged cover is secured with easily operated quick release clamps.
- Solid , oil-resistant gaskets are permanently secured between flanges when sections and fittings are bolted together.
- Sealing plate and one gasket kit, complete with hardware is provided with each straight section or fitting.
- Flange junctions are sealed with gasket sealing plates, which are put in place after wiring is completed. One is supplied with all straight sections and most fittings
- Sections and components are finished in ANSI 61 gray powder coating.



Notes

- To join a wireway section or fitting to an enclosure, a box connector is required.
- To join two wireway sections, or to join a wireway section to a fitting, a flat sealing plate is required at each junction; necessary kits are supplied with each section and fitting. Extra kits may be ordered if necessary.
- To join a lay-in wireway section or fitting to a closure plate, a box connector, or cutoff fitting, an angle sealing plate is required at each junction.

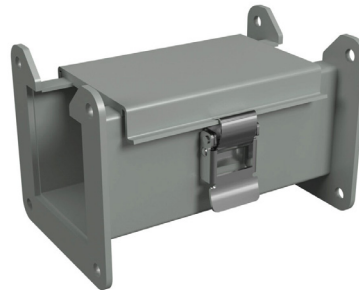
Listings

- UL 870 Type 1 [File E186830]
- CSA Type 1 [File LL21312]
- Complies with:
 - NEMA Type 12
 - IEC 60529, IP54

NEMA 12 Lay-In Wireway			
Part Number	Price	Overall Size HxWxD	Drawing Link
1485B6	\$68.00	2.5 x 2.5 x 6 [64 x 64 x 152]	PDF
1485B12	\$80.00	2.5 x 2.5 x 12 [64 x 64 x 305]	PDF
1485B24	\$103.00	2.5 x 2.5 x 24 [64 x 64 x 610]	PDF
1485B36	\$126.00	2.5 x 2.5 x 36 [64 x 64 x 914]	PDF
1485B48	\$150.00	2.5 x 2.5 x 48 [64 x 64 x 1219]	PDF
1485B60	\$173.00	2.5 x 2.5 x 60 [64 x 64 x 1524]	PDF
1485B120	\$287.00	2.5 x 2.5 x 120 [64 x 64 x 3048]	PDF
1485C6	\$82.00	4 x 4 x 6 [102 x 102 x 152]	PDF
1485C12	\$95.00	4 x 4 x 12 [102 x 102 x 305]	PDF
1485C24	\$122.00	4 x 4 x 24 [102 x 102 x 610]	PDF
1485C36	\$148.00	4 x 4 x 36 [102 x 102 x 914]	PDF
1485C48	\$174.00	4 x 4 x 48 [102 x 102 x 1219]	PDF
1485C60	\$201.00	4 x 4 x 60 [102 x 102 x 1524]	PDF
1485C120	\$331.00	4 x 4 x 120 [102 x 102 x 3048]	PDF
1485D6	\$101.00	6 x 6 x 6 [152 x 152 x 152]	PDF
1485D12	\$122.00	6 x 6 x 12 [152 x 152 x 305]	PDF
1485D24	\$163.00	6 x 6 x 24 [152 x 152 x 610]	PDF
1485D36	\$205.00	6 x 6 x 36 [152 x 152 x 914]	PDF
1485D48	\$246.00	6 x 6 x 48 [152 x 152 x 1219]	PDF
1485D60	\$288.00	6 x 6 x 60 [152 x 152 x 1524]	PDF
1485D120	\$496.00	6 x 6 x 120 [152 x 152 x 3048]	PDF
1485E6	\$154.00	8 x 8 x 6 [203 x 203 x 152]	PDF
1485E12	\$181.00	8 x 8 x 12 [203 x 203 x 305]	PDF
1485E24	\$235.00	8 x 8 x 24 [203 x 203 x 610]	PDF
1485E36	\$288.00	8 x 8 x 36 [203 x 203 x 914]	PDF
1485E48	\$342.00	8 x 8 x 48 [203 x 203 x 1219]	PDF
1485E60	\$395.00	8 x 8 x 60 [203 x 203 x 1524]	PDF
1485E120	\$666.00	8 x 8 x 120 [203 x 203 x 3048]	PDF
1485F6	\$162.00	12 x 6 x 6 [305 x 152 x 152]	PDF
1485F12	\$204.00	12 x 6 x 12 [305 x 152 x 305]	PDF
1485F24	\$287.00	12 x 6 x 24 [305 x 152 x 610]	PDF
1485F36	\$371.00	12 x 6 x 36 [305 x 152 x 914]	PDF
1485F48	\$455.00	12 x 6 x 48 [305 x 152 x 1219]	PDF
1485F60	\$538.00	12 x 6 x 60 [305 x 152 x 1524]	PDF
1485F120	\$962.00	12 x 6 x 120 [305 x 152 x 3048]	PDF

Note: Dimensions in inches [millimeters].

Shipping Schedule	
Same day	1 - 15 days
Color indicates shipping lead time in business days.	



NEMA 12 Lay-In Wireway Fittings



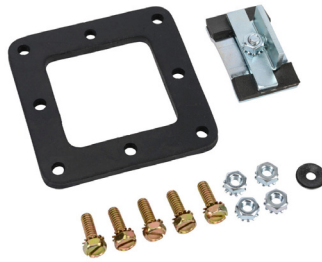
Shipping Schedule	
Same day	1 - 15 days

Color indicates shipping lead time in business days.



Snap-on Flat Sealing Plates			
Part Number	Price	Size	Drawing Link
1485BSM	\$11.25	2.5 x 2.5 [64 x 64]	PDF
1485CSM	\$13.25	4 x 4 [102 x 102]	PDF
1485DSM	\$17.25	6 x 6 [152 x 152]	PDF
1485ESM	\$22.50	8 x 8 [203 x 203]	PDF
1485FSM	\$28.00	12 x 6 [305 x 152]	PDF

Note: Maintains ratings on CSA and UL approved wireway.



Angle Sealing Plate			
Part Number	Price	Size HxW	Drawing Link
1485BS9	\$14.25	2.5 x 2.5 [64 x 64]	PDF
1485CS9	\$16.50	4 x 4 [102 x 102]	PDF
1485DS9	\$20.00	6 x 6 [152 x 152]	PDF
1485ES9	\$26.00	8 x 8 [203 x 203]	PDF
1485FS9	\$33.00	12 x 6 [305 x 152]	PDF

Note: Maintains ratings on CSA and UL approved wireway.

Features

- For connecting wireway to an enclosure
- One angle sealing plate included.



Box Entry Swivel Nipples			
Part Number	Price	Size HxWxD	Drawing Link
1485BV1	\$93.00	2.5 x 2.5 x 2.25 [64 x 64 x 57]	PDF
1485CV1	\$117.00	4 x 4 x 2.25 [102 x 102 x 57]	PDF
1485DV1	\$145.00	6 x 6 x 2.25 [152 x 152 x 57]	PDF
1485EV1	\$211.00	8 x 8 x 2.25 [203 x 203 x 57]	PDF

Note: Maintains ratings on CSA and UL approved wireway.

One angle sealing plate included.



Standard Swivel Nipples			
Part Number	Price	Size HxWxD	Drawing Link
1485BV2	\$93.00	2.5 x 2.5 x 2.25 [64 x 64 x 57]	PDF
1485CV2	\$117.00	4 x 4 x 2.25 [102 x 102 x 57]	PDF
1485DV2	\$145.00	6 x 6 x 2.25 [152 x 152 x 57]	PDF
1485EV2	\$211.00	8 x 8 x 2.25 [203 x 203 x 57]	PDF

Note: Maintains ratings on CSA and UL approved wireway.

Two angle sealing plates included.

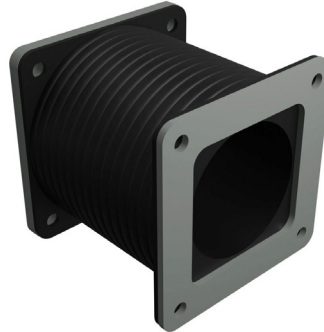
NEMA 12 Lay-In Wireway Fittings



Shipping Schedule	
Same day	1 - 15 days
Color indicates shipping lead time in business days.	

Features

- Allows for easy alignment of sections or fittings.
- Carbon steel flanges.
- Flexible "bellows" middle section.



Flexible Fittings			
Part Number	Price	Size HxWxD	Drawing Link
1485BFF	\$163.00	2.5 x 2.5 x 3 to 10	PDF
1485CFF	\$184.00	4 x 4 x 3 to 10	PDF
1485DFF	\$233.00	6 x 6 x 3 to 10	PDF
1485EFF	\$321.00	8 x 8 x 3 to 10	PDF

Features

- Allows length adjustment of 2in to 7in [50.8 to 177.8 mm].
- Special Sealing plate included.
- Does not meet CSA or UL requirements.



Adjustable Fittings			
Part Number	Price	Adjustment Size	Drawing Link
1485BX	\$113.00	2.5 x 2.5 x 2 to 7	PDF
1485CX	\$140.00	4 x 4 x 2 to 7	PDF
1485DX	\$158.00	6 x 6 x 2 to 7	PDF
1485EX	\$228.00	8 x 8 x 2 to 7	PDF
1485FX	\$303.00	12 x 6 x 2 to 7	PDF



Cross Fittings			
Part Number	Price	Size HxWxD	Drawing Link
1485BY	\$207.00	2.5 x 2.5 [64 x 64]	PDF
1485CY	\$261.00	4 x 4 [102 x 102]	PDF
1485DY	\$313.00	6 x 6 [152 x 152]	PDF
1485EY	\$403.00	8 x 8 [203 x 203]	PDF
1485FY	\$409.00	12 x 6 [305 x 152]	PDF

Three flat sealing plates included.

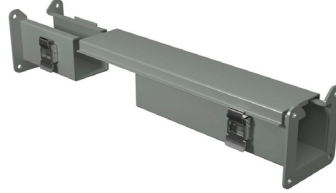
NEMA 12 Lay-In Wireway Fittings



Shipping Schedule	
Same day	1 - 15 days
Color indicates shipping lead time in business days.	

Features

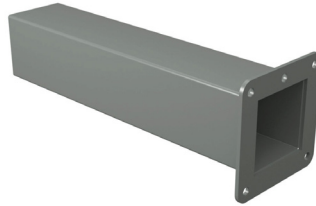
- Body comes in two pieces. Cut-off one piece, shorten cover, and weld together.
- Includes angle sealing plate and flat sealing plate.
- Does not meet CSA or UL requirements.



Lay-in Cut-off Fittings			
Part Number	Price	Size HxWxD	Drawing Link
1485BW1	\$121.00	2.5 x 2.5 x 9 to 15	PDF
1485CW1	\$136.00	4 x 4 x 9 to 15	PDF
1485DW1	\$156.00	6 x 6 x 9 to 15	PDF
1485EW1	\$204.00	8 x 8 x 9 to 15	PDF
1485FW1	\$283.00	12 x 6 x 9 to 15	PDF

Features

- Cut off body and weld on flange.
- One angle sealing plate included.
- Does not meet CSA or UL requirements.



Pull-Through Cut-Off Fittings			
Part Number	Price	Size HxWxD	Drawing Link
1485BW2	\$64.00	2.5 x 2.5 x up to 12	PDF
1485CW2	\$75.00	4 x 4 x up to 12	PDF
1485DW2	\$95.00	6 x 6 x up to 12	PDF
1485EW2	\$140.00	8 x 8 x up to 12	PDF
1485FW2	\$163.00	12 x 6 x up to 12	PDF

Features

- One flat sealing plate included.
- Lay-in nipples come with a special sealing plate which cannot be used adjacent to swivel nipples (use 1487 Series Nipples).

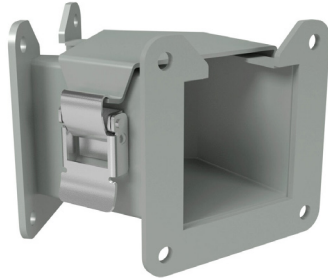


Wireway Nipples				
Part Number	Price	Overall Size HxWxD	Nipple Size	Drawing Link
1485BM1	\$57.00	2.5 x 2.5 x 1 [64 x 64 x 25]	1in	PDF
1485BM2	\$62.00	2.5 x 2.5 x 2 [64 x 64 x 51]	2in	PDF
1485BM3	\$67.00	2.5 x 2.5 x 3 [64 x 64 x 76]	3in	PDF
1485CM1	\$73.00	4 x 4 x 1 [102 x 102 x 25]	1in	PDF
1485CM2	\$80.00	4 x 4 x 2 [102 x 102 x 51]	2in	PDF
1485CM3	\$87.00	4 x 4 x 3 [102 x 102 x 76]	3in	PDF
1485DM1	\$87.00	6 x 6 x 1 [152 x 152 x 25]	1in	PDF
1485DM2	\$94.00	6 x 6 x 2 [152 x 152 x 51]	2in	PDF
1485DM3	\$101.00	6 x 6 x 3 [152 x 152 x 76]	3in	PDF

NEMA 12 Lay-In Wireway Fittings



Shipping Schedule	
Same day	1 - 15 days
Color indicates shipping lead time in business days.	



Top Elbow Opening



Inside Elbow Opening

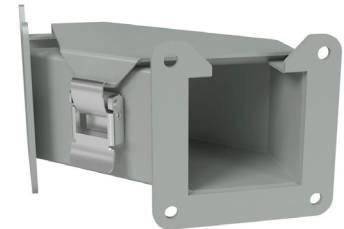


Outside Elbow Opening

45° Elbows				
Part Number	Price	Size HxW	Elbow Opening	Drawing Link
1485B4N	\$126.00	2.5 x 2.5 [64 x 64]	Top	PDF
1485B4P	\$126.00		Inside	
1485B4Q	\$126.00		Outside	
1485C4N	\$161.00	4 x 4 [102 x 102]	Top	PDF
1485C4P	\$161.00		Inside	PDF
1485C4Q	\$161.00		Outside	PDF
1485D4N	\$191.00	6 x 6 [152 x 152]	Top	PDF
1485D4P	\$191.00		Inside	PDF
1485D4Q	\$191.00		Outside	PDF
1485E4N	\$260.00	8 x 8 [203 x 203]	Top	PDF
1485E4P	\$260.00		Inside	PDF
1485E4Q	\$260.00		Outside	PDF
1485F4N	\$285.00	12 x 6 [305 x 152]	Top	PDF

90° Elbows				
Part Number	Price	Size HxW	Elbow Opening	Drawing Link
1485B9N	\$126.00	2.5 x 2.5 [64 x 64]	Top	PDF
1485B9P	\$126.00		Inside	PDF
1485B9Q	\$126.00		Outside	PDF
1485C9N	\$161.00	4 x 4 [102 x 102]	Top	PDF
1485C9P	\$161.00		Inside	PDF
1485C9Q	\$161.00		Outside	PDF
1485D9N	\$191.00	6 x 6 [152 x 152]	Top	PDF
1485D9P	\$191.00		Inside	PDF
1485D9Q	\$191.00		Outside	PDF
1485E9N	\$260.00	8 x 8 [203 x 203]	Top	PDF
1485E9P	\$260.00		Inside	PDF
1485E9Q	\$260.00		Outside	PDF
1485F9N	\$285.00	12 x 6 [305 x 152]	Top	PDF
1485F9P	\$285.00		Inside	PDF
1485F9Q	\$285.00		Outside	PDF

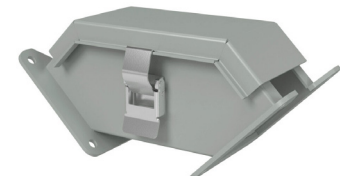
One flat sealing plate included.



Top Elbow Opening



Inside Elbow Opening



Outside Elbow Opening

NEMA 12 Lay-In Wireway Fittings



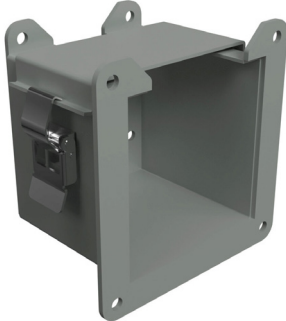
Shipping Schedule	
Same day	1 - 15 days
Color indicates shipping lead time in business days.	



Top Opening



Outside and Top Opening



Tee Fitting, Top Opening				
Part Number	Price	Size	Opening	Drawing Link
1485BTN	\$151.00	2.5 x 2.5 [64 x 64]	Top	PDF
1485BTQ	\$173.00		Outside and Top	PDF
1485CTN	\$195.00	4 x 4 [102 x 102]	Top	PDF
1485CTQ	\$223.00		Outside and Top	PDF
1485DTN	\$233.00	6 x 6 [152 x 152]	Top	PDF
1485DTQ	\$268.00		Outside and Top	PDF
1485ETN	\$279.00	8 x 8 [203 x 203]	Top	PDF
1485ETQ	\$321.00		Outside and Top	PDF
1485FTN	\$314.00	12 x 6 [305 x 152]	Top	PDF

Two flat sealing plates included.

Reducers			
Part Number	Price	Reduces Size	Drawing Link
1485CRE	\$99.00	4 x 4 to 2.5 x 2.5 [102 x 102 x 5]	PDF
1485DRE	\$122.00	6 x 6 to 4 x 4 [152 x 152 x 102]	PDF
1485ERE	\$152.00	8 x 8 to 6 x 6 [203 x 203 x 152]	PDF
1485FREC	\$184.00	12 x 6 to 4 x 4 [305 x 152 x 102]	PDF
1485FRED	\$184.00	12 x 6 to 6 x 6 [305 x 152 x 152]	PDF

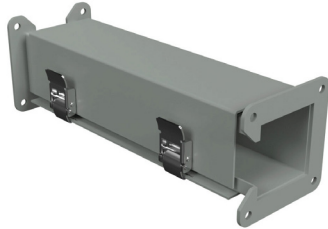
Box Connectors			
Part Number	Price	Size	Drawing Link
1485BK	\$26.00	2.5 x 2.5 [64 x 64]	PDF
1485CK	\$32.50	4 x 4 [102 x 102]	PDF
1485DK	\$39.00	6 x 6 [152 x 152]	PDF
1485EK	\$52.00	8 x 8 [203 x 203]	PDF
1485FK	\$104.00	12 x 6 [305 x 152]	PDF

One angle sealing plate included.

NEMA 12 Lay-In Wireway Fittings

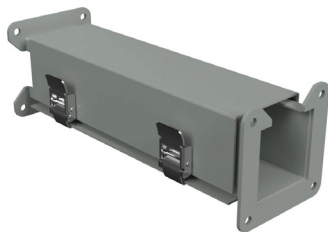


Shipping Schedule	
Same day	1 - 15 days
Color indicates shipping lead time in business days.	



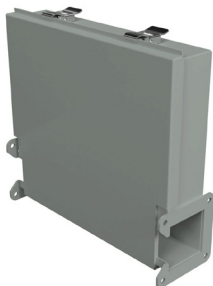
Clockwise Transposition			
Part Number	Price	Overall Size HxW	Drawing Link
1485BZ12	\$127.00	2.5 x 2.5	PDF
1485CZ12	\$162.00	4 x 4	PDF
1485DZ12	\$191.00	6 x 6	PDF
1485EZ12	\$331.00	8 x 8	PDF

One flat sealing plate included.



Counter-Clockwise Transposition			
Part Number	Price	Overall Size HxW	Drawing Link
1485BZC12	\$127.00	2.5 x 2.5 [64 x 64]	PDF
1485CZC12	\$162.00	4 x 4 [102 x 102]	PDF
1485DZC12	\$191.00	6 x 6 [152 x 152]	PDF
1485EZC12	\$331.00	8 x 8 [203 x 203]	PDF

One flat sealing plate included.



Junction Boxes				
Part Number	Price	Overall Size HxWxD	Size HxW	Drawing Link
1485BJ	\$188.00	12 x 10.25 x 2.5 [305 x 260 x 64]	12 x 10.25 x 2.5	PDF
1485CJ	\$219.00	14 x 13.87 x 4 [356 x 352 x 102]	14 x 13.87 x 4	PDF
1485DJ	\$267.00	16 x 17.87 x 6 [406 x 454 x 152]	16 x 17.87 x 6	PDF
1485EJ	\$325.00	18 x 21.87 x 8 [457 x 555 x 203]	18 x 21.87 x 8	PDF

Note: Dimensions in inches [millimeters].

Features

- Includes Inner Panel
- One Flat sealing Plate included



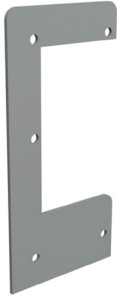
Cover Plates			
Part Number	Price	Wireway HxW	Drawing Link
1485BH	\$23.50	2.5 x 2.5 [64 x 64]	PDF
1485CH	\$29.50	4 x 4 [102 x 102]	PDF
1485DH	\$35.50	6 x 6 [152 x 152]	PDF
1485EH	\$47.00	8 x 8 [203 x 203]	PDF
1485FH	\$52.00	12 x 6 [305 x 152]	PDF

One flat sealing plate included.

NEMA 12 Lay-In Wireway Hangers

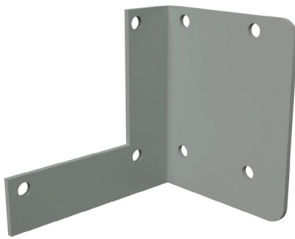


Shipping Schedule	
Same day	1 - 15 days
Color indicates shipping lead time in business days.	



Drop Hangers			
Part Number	Price	For Wireway HxW	Drawing Link
1485BL1	\$17.75	2.5 x 2.5 [64 x 64]	PDF
1485CL1	\$23.00	4 x 4 [102 x 102]	PDF
1485DL1	\$31.00	6 x 6 [152 x 152]	PDF
1485EL1	\$62.00	8 x 8 [203 x 203]	PDF

Does not meet CSA or UL requirements.



Bracket Hangers			
Part Number	Price	For Wireway HxW	Drawing Link
1485BL2	\$12.25	2.5 x 2.5 [64 x 64]	PDF
1485CL2	\$15.50	4 x 4 [102 x 102]	PDF
1485DL2	\$21.50	6 x 6 [152 x 152]	PDF
1485EL2	\$56.00	8 x 8 [203 x 203]	PDF

Does not meet CSA or UL requirements.