

Enclosure Accessories

Window Kits



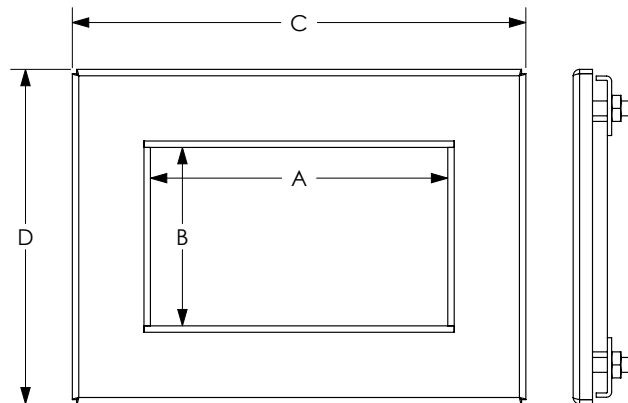
Construction

- Maintain environmental protection level of NEMA 4 (NEMA 4X for stainless steel).
- Window is 0.25in thick, UV-resistant Polycarbonate.
- Frame is heavy gauge carbon steel or 304 stainless steel with integral weld studs and compression clips.
- Oil-resistant neoprene gasket ensures a watertight seal.
- Finished in ANSI 61 gray recoatable powder or #4 brushed stainless steel.

| Shipping Schedule | |
|--|-------------|
| Same day | 1 - 15 days |
| Color indicates shipping lead time in business days. | |

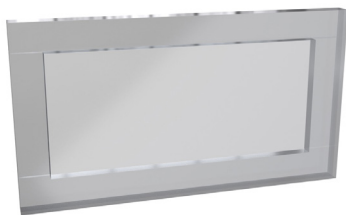
| Window Kits | | | | | | |
|--------------------|----------|----------------------|----------|-----------------------------|-----------------------------|-----------------------------|
| Carbon Steel | Price | Stainless Steel | Price | Window Dimensions AxB | Overall Dimensions (WxH) | Recommended Cut-Out Size |
| 1481WN40503 | \$118.00 | 1481WN4SS0503 | \$196.00 | 5.00 x 3.00in [127 x 76] | 7.63 x 5.63in [194 x 143] | 6.69 x 4.69in [170 x 119] |
| 1481WN40905 | \$143.00 | 1481WN4SS0905 | \$236.00 | 9.00 x 5.50in [229 x 140] | 11.63 x 8.13in [295 x 207] | 10.69 x 7.19in [272 x 183] |
| 1481WN41303 | \$129.00 | — | — | 13.00 x 3.00in [330 x 76] | 15.63 x 5.63in [397 x 143] | 14.69 x 4.69in [373 x 119] |
| 1481WN41308 | \$179.00 | 1481WN4SS1308 | \$298.00 | 13.00 x 8.00in [330 x 203] | 15.63 x 10.63in [397 x 270] | 14.69 x 9.69in [373 x 246] |
| 1481WN41705 | \$161.00 | — | — | 17.00 x 5.50in [432 x 140] | 19.63 x 8.13in [499 x 207] | 18.69 x 7.19in [475 x 183] |
| 1481WN41711 | \$247.00 | 1481WN4SS1711 | \$393.00 | 17.00 x 11.00in [432 x 279] | 19.63 x 13.63in [499 x 346] | 18.69 x 12.69in [475 x 322] |
| 1481WN42315 | \$305.00 | 1481WN4SS2315 | \$506.00 | 23.00 x 15.00in [584 x 381] | 25.63 x 17.63in [651 x 448] | 24.69 x 16.69in [627 x 424] |
| 1481WN42919 | \$453.00 | 1481WN4SS2919 | \$754.00 | 29.00 x 19.00in [737 x 483] | 31.63 x 21.63in [803 x 549] | 30.69 x 20.69in [780 x 526] |
| 1481WN43523 | \$597.00 | — | — | 35.00 x 23.00in [889 x 584] | 37.63 x 25.63in [956 x 651] | 36.69 x 24.69in [932 x 627] |

Note: Dimensions in inches [millimeters].



See our website: www.AutomationDirect.com for complete engineering drawings.

Enclosure Accessories Frameless Window Kits



Application

- Designed for indoor use on NEMA 12 and 13 enclosures.
- Scratch-resistant polycarbonate window is 0.125in thick.
- Double-sided tape is on the window for easy installation.
- Mounting hardware and template are included.

| Shipping Schedule | |
|--|-------------|
| Same day | 1 - 15 days |
| Color indicates shipping lead time in business days. | |

| Frameless Window Kits | | | |
|--|---------|---------------------------|---------------------------|
| Part Number | Price | Window Dimensions AxB | Maximum Cut-Out Size |
| 1481WFL52 | \$42.00 | 5.50 x 3.00in [140 x 76] | 4.50 x 2.00in [114 x 51] |
| 1481WFL133 | \$53.00 | 13.88 x 3.88in [353 x 99] | 12.88 x 2.88in [327 x 73] |
| 1481WFL96 | \$58.00 | 9.62 x 7.19in [244 x 183] | 8.62 x 6.19in [219 x 157] |
| <i>Note: Dimensions in inches [millimeters].</i> | | | |

