

GS1,GS2,GS3/DURAPULSE Accessories – Miscellaneous



GS3-KPD



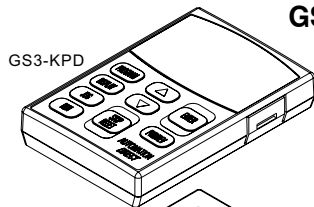
GS2-KPD



ZL-CDM-RJ12x4



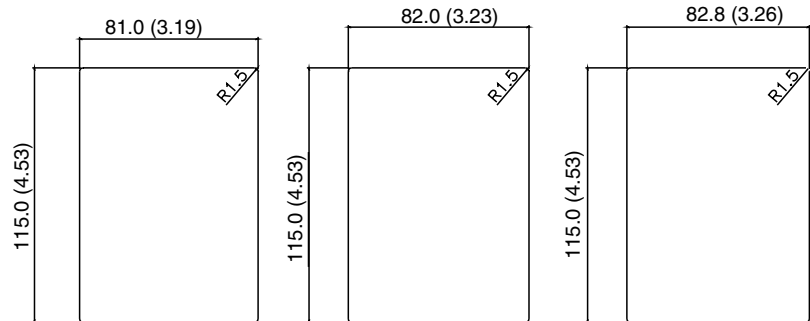
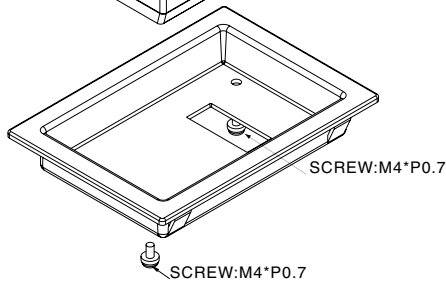
ZL-CDM-RJ12x10



GS3-BZL

The GS3-BZL Flush Mount Bezel Kit allows remote mounting of the DURAPULSE removable keypad. The Bezel Kit has a Protected Chassis, IP20 enclosure rating. The thickness of the panel will determine required hole dimensions:

t = 1.0 (.0393) - 1.4 (.0551) t = 1.6 (.629) - 2.0 (.0787) t = 2.2 (.0866) - 3.0 (.1181)



GS-CBL2-1L



GS-CBL2-3L



GS-CBL2-5L

GS1, GS2, GS3/DURAPULSE Drives Miscellaneous Accessories			
Part Number	Drive Model	Description	Price
GS-232CBL	GS1, GS2, GS3/DURApulse	Configuration Cable required for GSoft configuration software	\$24.00
GS-CBL2-1L	GS2, GS3/DURApulse	One meter keypad cable (installation screws included)	\$30.50
GS-CBL2-3L	GS2, GS3/DURApulse	Three meter keypad cable (installation screws included)	\$41.00
GS-CBL2-5L	GS2, GS3/DURApulse	Five meter keypad cable (installation screws included)	\$47.00
GS2-KPD	GS2	Spare or replacement keypad for GS2 AC drives	\$41.00
GS3-KPD	GS3/DURApulse	Spare or replacement keypad for DURApulse AC drives; great for maintenance or back-up programs	\$72.00
GS3-BZL	GS3/DURApulse	Flush Mount Bezel Kit for remote mounting of the DURApulse removable keypad	\$14.50
ZL-CDM-RJ12X4	GS1, GS2, GS3/DURApulse	ZIPLink 4-port communication distribution module, 4 RJ12 ports, and 1 screw terminal port	\$20.00
ZL-CDM-RJ12X10	GS1, GS2, GS3/DURApulse	ZIPLink 10-port communication distribution module, 10 RJ12 ports, and 1 screw terminal port	\$25.50

Optional Ziplink serial communication cables available for plug and play connectivity to AutomationDirect PLCs. See the comm cable selection matrix on page pg.163.

GS2 AC Drive Accessories – Mounting Options

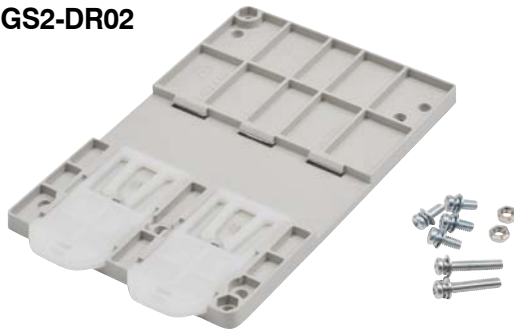
GS2 DIN Rail Adapter

Mounting plate adapter for mounting smaller-frame GS2 drives onto 35mm DIN rail. This adapter will fit all GS2 drives 2HP and below. The adapter will also fit 3HP GS2 drives that are 460V and 575V. Includes adapter, drive mounting screws, and installation instructions.

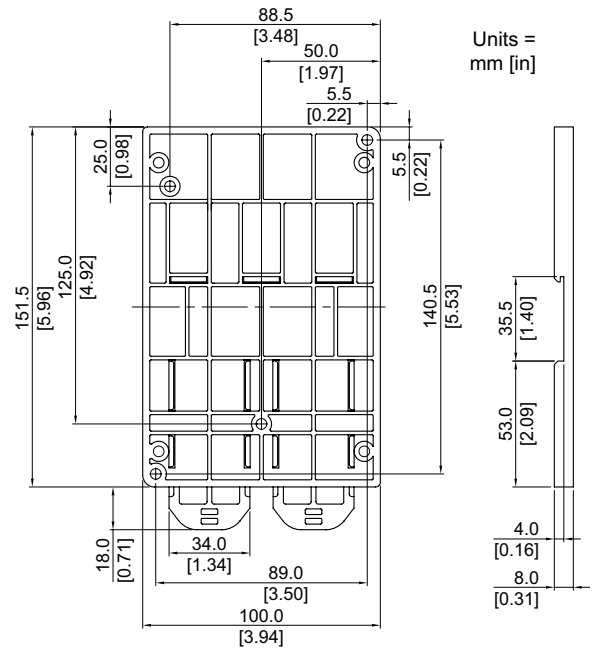
- RoHS compliant

GS2 DIN Rail Adapter			
Part Number	Price	Description	Drive Model (GS2)
GS2-DR02	\$8.75	DIN rail adapter plate for smaller GS2 drives; includes installation instructions & drive mounting screws & nuts [(4) M4-0.7x10mm screws, (2) M4-0.7x22mm screws, (2) M4x0.7 nuts]	GS2-10P2, GS2-10P5, GS2-20P5, GS2-21P0, GS2-22P0, GS2-41P0, GS2-42P0, GS2-43P0, GS2-51P0, GS2-52P0, GS2-53P0
<p><i>GS2-DR02 not required for GS1 drives (which have built-in DIN-rail mounting capability)</i> <i>GS2-DR02 not applicable for:</i> Any GS2 drives not listed in this table, EMI filters mounted between drive and DIN rail adapter (mount filter separately, if required), Any GS3/DURApulse drives.</p>			

GS2-DR02

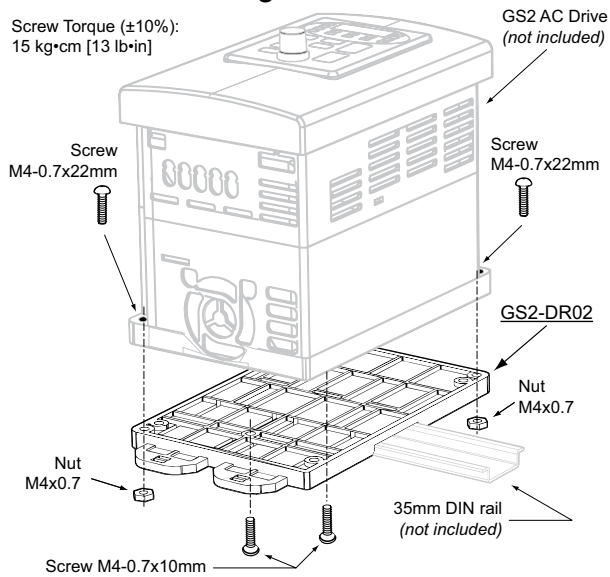


GS2-DR02 Dimensions



GS2-DR02 Mounting

Screw Torque ($\pm 10\%$):
15 kg•cm [13 lb•in]



GS3/DURAPULSE Accessories – Replacement Parts

GS3/DURAPULSE AC drives 3 hp and larger have built-in cooling fans, and replacement fans are also available. These fans are direct replacements for the internal factory-installed fans.



Warning: Fan replacement should only be performed by personnel skilled in the disassembly and repair of variable frequency AC drives.



NOTE: INSTALLATION INSTRUCTIONS ARE INCLUDED WITH THE FANS.

Replacement Fans for DURAPULSE (GS3 Series) AC Drives					
Part Number ⁽¹⁾	Price	Specifications ⁽²⁾	Fans / Drive ⁽³⁾	GS3 Drive Model ⁽⁴⁾	Drive V / HP
GS-FAN-1	\$25.50	50 mm, 12 VDC, 0.25A	1	GS3-43P0	460 / 3
GS-FAN-2	\$28.00	60 mm, 12 VDC, 0.25A	1	GS3-23P0 GS3-25P0 GS3-45P0	230 / 3 230 / 5 460 / 5
GS-FAN-3	\$28.00	80 mm, 12 VDC, 0.42A	2	GS3-27P5 GS3-2010 GS3-2015 GS3-47P5 GS3-4010 GS3-4015	230 / 7.5 230 / 10 230 / 15 460 / 7.5 460 / 10 460 / 15
GS-FAN-4	\$41.50	92 mm, 24 VDC, 0.30A	2	GS3-2020 GS3-2025 GS3-2030 GS3-4020 GS3-4025 GS3-4030	230 / 20 230 / 25 230 / 30 460 / 20 460 / 25 460 / 30
GS-FAN-5	\$103.00	120 mm, 24 VDC, 1.2A	2	GS3-2040 GS3-2050 GS3-4040 GS3-4050 GS3-4060 GS3-4075 GS3-4100	230 / 40 230 / 50 460 / 40 460 / 50 460 / 60 460 / 75 460 / 100

1) One fan per part number. Includes connectorized electrical cable and installation instructions.
 2) Fans are replacements for the internal fans in GS3 drives, are dimensionally and electrically equivalent to the originals, and are not intended for other use. Fan electrical loading is included in the input amperage ratings of the drives, and DC voltage is internally provided by the drives.
 3) Some drives require multiple fans.
 4) Can be used only with applicable DURAPULSE AC drive.



Wiring Solutions

Wiring Solutions using the ZIPLink Wiring System

ZIPLinks eliminate the normally tedious process of wiring between devices by utilizing prewired cables and DIN rail mount connector modules. It's as simple as plugging in a cable connector at either end or terminating wires at only one end. Prewired cables keep installation clean and efficient, using half the space at a fraction of the cost of standard terminal blocks. There are several wiring solutions available when using the ZIPLink System ranging from PLC I/O-to-ZIPLink Connector Modules that are ready for field

termination, options for connecting to third party devices, GS, DuraPulse and SureServo Drives, and specialty relay, transorb and communications modules. Pre-printed I/O-specific adhesive label strips for quick marking of ZIPLink modules are provided with ZIPLink cables. See the following solutions to help determine the best ZIPLink system for your application.

Solution 1: DirectLOGIC, CLICK and Productivity3000 I/O Modules to ZIPLink Connector Modules

When looking for quick and easy I/O-to-field termination, a ZIPLink connector module used in conjunction with a prewired ZIPLink cable, consisting of an I/O terminal block at one end and a multi-pin connector at the other end, is the best solution.

Using the PLC I/O Modules to ZIPLink Connector Modules selector tables located in this section,

1. Locate your I/O module/PLC.
2. Select a ZIPLink Module.
3. Select a corresponding ZIPLink Cable.



Solution 2: DirectLOGIC, CLICK and Productivity3000 I/O Modules to 3rd Party Devices

When wanting to connect I/O to another device within close proximity of the I/O modules, no extra terminal blocks are necessary when using the ZIPLink Pigtail Cables. ZIPLink Pigtail Cables are prewired to an I/O terminal block with color-coded pigtail with soldered-tip wires on the other end.

Using the I/O Modules to 3rd Party Devices selector tables located in this section,

1. Locate your PLC I/O module.
2. Select a ZIPLink Pigtail Cable that is compatible with your 3rd party device.



Solution 3: GS Series and DURAPULSE Drives Communication Cables

Need to communicate via Modbus RTU to a drive or a network of drives?

ZIPLink cables are available in a wide range of configurations for connecting to PLCs and SureServo, SureStep, Stellar Soft Starter and AC drives. Add a ZIPLink communications module to quickly and easily set up a multi-device network.

Using the Drives Communication selector tables located in this section,

1. Locate your Drive and type of communications.
2. Select a ZIPLink cable and other associated hardware.





Wiring Solutions

Solution 4: Serial Communications Cables

ZIPLink offers communications cables for use with *Direct*.LOGIC, CLICK, and Productivity3000 CPUs, that can also be used with other communications devices. Connections include a 6-pin RJ12 or 9-pin, 15-pin and 25-pin D-sub connectors which can be used in conjunction with the RJ12 or D-Sub Feedthrough modules.

Using the **Serial Communications Cables** selector table located in this section,

1. Locate your connector type
2. Select a cable.



Solution 5: Specialty ZIPLink Modules

For additional application solutions, ZIPLink modules are available in a variety of configurations including stand-alone relays, 24VDC and 120VAC transorb modules, D-sub and RJ12 feedthrough modules, communication port adapter and distribution modules, and SureServo 50-pin I/O interface connection.

Using the **ZIPLink Specialty Modules** selector table located in this section,

1. Locate the type of application.
2. Select a ZIPLink module.



Solution 6: ZIPLink Connector Modules to 3rd Party Devices

If you need a way to connect your device to terminal blocks without all that wiring time, then our pigtail cables with color-coded soldered-tip wires are a good solution. Used in conjunction with any compatible ZIPLink Connector Modules, a pigtail cable keeps wiring clean and easy and reduces troubleshooting time.

Using the **Universal Connector Modules and Pigtail Cables** table located in this section,

1. Select module type.
2. Select the number of pins.
3. Select cable.





Motor Controller Communication

AC Drive / Motor Controller (GS/DuraPulse) ZIPLink Selector												
AC Drive / Controller		Communications			ZIPLink Cable							
Controller	Comm Port Type	Network/Protocol	Connects to	Comm Port Type	Cable (2 meter length)	Cable Connectors	Other Hardware Required					
GS1	RJ12	RS-485 Modbus RTU	BRX MPUs	RS-485, 3-Pin	ZL-RJ12-CBL-2P	RJ12 to pigtail	N/A					
			P2-550									
			P3-530									
			P3-550									
			P3-550E									
			P2-SCM	RS-485, 4-Pin								
			P3-SCM									
			DL06 PLCs	Port 2 (HD15)				GS-485HD15-CBL-2	RJ12 to HD15			
			D2-260, D2-262 CPU									
			GS-EDRV100	RJ12				GS-EDRV-CBL-2	RJ12 to RJ12			
			ZL-CDM-RJ12Xxx *	RJ12				GS-485RJ12-CBL-2				
FA-ISOCOCON	5-pin connector	GS-ISOCOCON-CBL-2	RJ12 to 5-pin plug									
GS2	RJ12	RS-232 Modbus RTU	BRX MPUs	RS-232/485, 3-Pin	ZL-RJ12-CBL-2P	RJ12 to pigtail	N/A					
			P2-550									
			P3-530	RS-485, 4-Pin								
			P3-550									
			P3-550E									
			P2-SCM					Ports 1, 2 & 3				
			P3-SCM					Ports 1 to 4				
			CLICK PLCs	Port 2 (RJ12)				GS-RJ12-CBL-2	RJ12 to RJ12			
			DL05 PLCs									
			DL06 PLCs	Port 2 (HD15)								
			D2-250-1 CPU									
			D2-260, D2-262 CPU									
			D4-450, D4-454 CPU	Port 3 (25-pin)							FA-15HD	
		RS-485 Modbus RTU			BRX MPUs	RS-232/485, 3-Pin	ZL-RJ12-CBL-2P			RJ12 to pigtail	N/A	
					P2-550							
					P3-530	RS-485, 3-Pin						
					P3-550							
					P3-550E							
					P2-SCM							RS-485, 4-Pin
					P3-SCM							
					DL06 PLCs	Port 2 (HD15)		GS-485HD15-CBL-2	RJ12 to HD15			
					D2-260, D2-262 CPU							
					GS-EDRV100	RJ12		GS-EDRV-CBL-2	RJ12 to RJ12			
ZL-CDM-RJ12Xxx *	RJ12	GS-485RJ12-CBL-2										
FA-ISOCOCON	5-pin connector	GS-ISOCOCON-CBL-2	RJ12 to 5-pin plug									
DuraPulse (GS3)	RJ12	RS-485 Modbus RTU	BRX MPUs	RS-485, 3-Pin	ZL-RJ12-CBL-2P	RJ12 to pigtail	N/A					
			P2-550									
			P3-530	RS-485, 3-Pin								
			P3-550									
			P3-550E									
			P2-SCM					RS-485, 4-Pin				
			P3-SCM									
			DL06 PLCs	Port 2 (HD15)				GS-485HD15-CBL-2	RJ12 to HD15			
			D2-260, D2-262 CPU									
			GS-EDRV100	RJ12				GS-EDRV-CBL-2	RJ12 to RJ12			
			ZL-CDM-RJ12Xxx *	RJ12				GS-485RJ12-CBL-2				
			FA-ISOCOCON	5-pin Connector				GS-ISOCOCON-CBL-2	RJ12 to 5-pin plug			

* When using the ZL-CDM-RJ12Xxx ZIPLink Communication Distribution Module, replace the lowercase xx with the number of RJ12 ports, i.e. 4 for four ports or 10 for ten ports. (ex: ZL-CDM-RJ12X4 or ZL-CDM-RJ12X10)