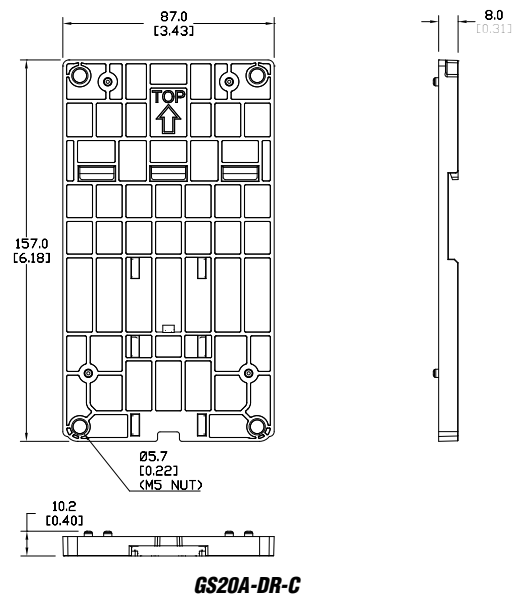
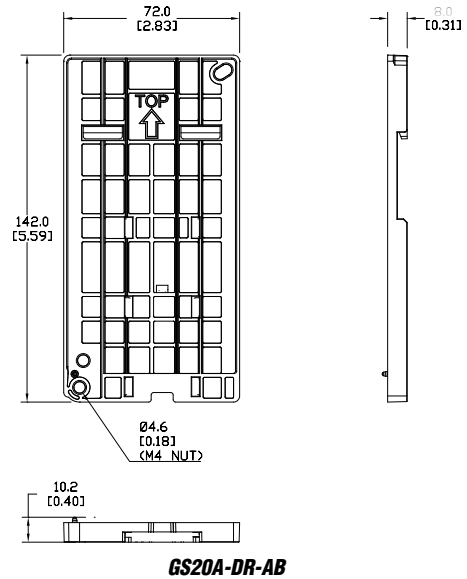


# GS20(X) Optional Accessories – Mounting Kits

## DIN Rail Mounting

Frame A, B, and C GS20 drives can be DIN rail mounted using a DIN rail mounting kit. One kit is used for A and B frame drives, while a second kit is used for C frame drives. Please see the GS20(X) User Manual for additional information and installation instructions.

GS20 DIN Rail Mounting Compatibility			
Drive Model	Frame	DIN Rail Kit	Price
GS21-10P2	A1	GS20A-DR-AB	\$4.20
GS21-20P2	A1		
GS23-20P2	A1		
GS23-20P5	A2		
GS21-10P5	A3		
GS21-20P5	A3		
GS23-40P5	A4		
GS23-21P0	A5		
GS23-41P0	A5		
GS23-51P0	A5		
GS23-22P0	B1		
GS23-42P0	B1		
GS23-52P0	B1		
GS21-21P0	B2	GS20A-DR-C	\$4.40
GS21-11P0	C1		
GS21-22P0	C1		
GS21-23P0	C1		
GS23-23P0	C1		
GS23-25P0	C1		
GS23-43P0	C1		
GS23-45P0	C1		
GS23-53P0	C1		
GS23-55P0	C1		

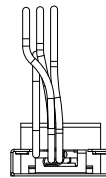
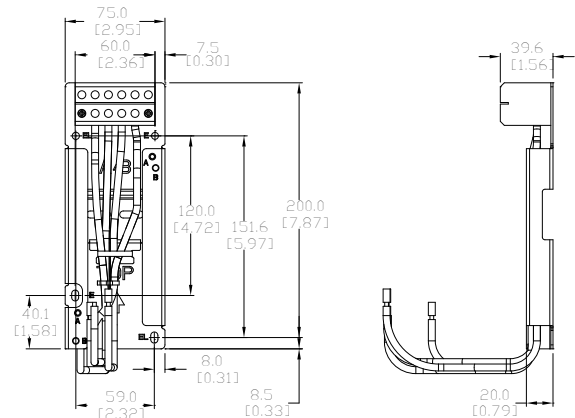


# GS20(X) Optional Accessories – Mounting Kits

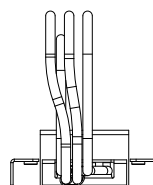
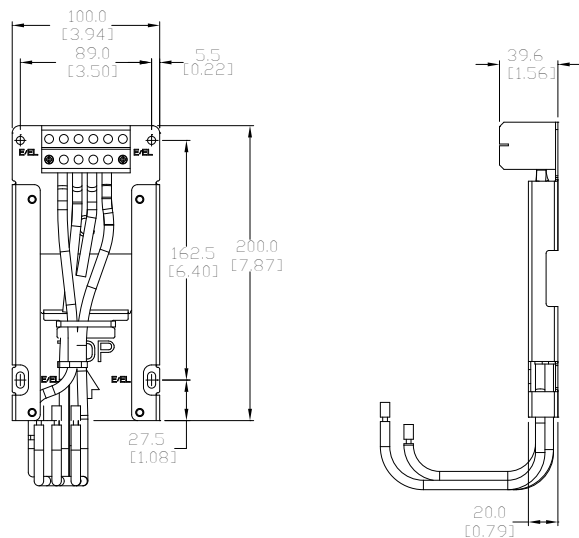
## Mounting Adapter Plate

The mounting adapter plate can be used to change the wiring orientation for the GS20 series and provides flexibility for installation. This accessory changes the wiring method from the “bottom-mains input/ bottom-motor output” to the “top-mains input/bottom-motor output” for GS20. Use the table below to select the correct mounting plate for your drive. Please see the GS20(X) User Manual for additional information and installation instructions.

GS20 Mounting Adapter Compatibility			
Drive Model	Frame	Mounting Plate	Price
GS21-10P2	A1	GS20A-MP-AB	\$43.60
GS21-20P2	A1		
GS23-20P2	A1		
GS23-20P5	A2		
GS21-10P5	A3		
GS21-20P5	A3		
GS23-40P5	A4		
GS23-21P0	A5		
GS23-41P0	A5		
GS23-51P0	A5		
GS23-22P0	B1		
GS23-42P0	B1		
GS23-52P0	B1		
GS21-21P0	B2	GS20A-MP-C	\$50.88
GS21-11P0	C1		
GS21-22P0	C1		
GS21-23P0	C1		
GS23-23P0	C1		
GS23-25P0	C1		
GS23-43P0	C1		
GS23-45P0	C1		
GS23-53P0	C1		
GS23-55P0	C1		



**GS20A-MP-AB**



**GS20A-MP-C**