



# 211 Series Water Valves (Noryl)

GC Valves 211 Series water valves are an excellent choice for potable water applications. They are available with either 316L stainless steel or Noryl bodies. Ported in 3/8, 1/2 or 3/4 inch NPT. Solenoid voltages of 120 VAC, 24 VAC or 24 VDC are available.



**NS211YF02FPDGG4  
Valve Shown**

## Features

- 2-Ports (2-way), 2-position
- Normally closed (N.C.) configuration
- Piloted diaphragm operator
- 18mm (DIN 43650A) style wiring plug
- 3/8", 1/2" or 3/4" NPT ports
- 120VAC, 24VAC or 24VDC solenoids
- Made in the USA



Also, see our website  
[www.AutomationDirect.com](http://www.AutomationDirect.com)  
for a variety of fitting options



Certified to  
NSF/ANSI 61



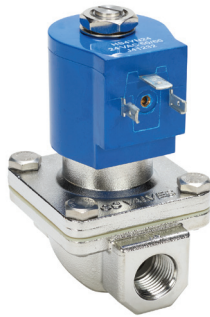
**Made  
in the  
USA**

211 Series Water Valves									
Model	NS211YF02FPCG4	NS211YF02FPDGG4	NS211YF02FPEG5	NS211YF24FPCG4	NS211YF24FPDGG4	NS211YF24FPEG5	NS211YF16FPCG4	NS211YF16FPDGG4	NS211YF16FPEG5
<b>Price</b>	\$87.00	\$87.00	\$90.00	\$87.00	\$87.00	\$90.00	\$87.00	\$87.00	\$90.00
<b>Weight (lbs)</b>	0.9	0.9	1.0	0.9	0.9	1.0	0.9	0.9	1.0
<b>Valve Type</b>	2-Ports (2-way), 2-position								
<b>Acting</b>	Pilot diaphragm, normally closed								
<b>Port Size</b>	3/8" FNPT	1/2" FNPT	3/4" FNPT	3/8" FNPT	1/2" FNPT	3/4" FNPT	3/8" FNPT	1/2" FNPT	3/4" FNPT
<b>Orifice Size</b>	5/8"	5/8"	3/4"	5/8"	5/8"	3/4"	5/8"	5/8"	3/4"
<b>Cv</b>	4.3	4.3	6.7	4.3	4.3	6.7	4.3	4.3	6.7
<b>Media</b>	Water								
<b>Pressure Range</b>	4-150 psi	4-150 psi	4-150 psi	4-150 psi	4-150 psi	4-150 psi	4-100 psi	4-100 psi	4-100 psi
<b>Voltage (± 10%)</b>	120/110 VAC 50/60 Hz	120/110 VAC 50/60 Hz	120/110 VAC 50/60 Hz	24VAC 50/60 Hz	24VAC 50/60 Hz	24VAC 50/60 Hz	24VDC	24VDC	24VDC
<b>Inrush AC</b>	40VA						-		
<b>Power Consumption</b>	8W	8W	8W	8W	8W	8W	10W	10W	10W
<b>Max Freq</b>	Cannot be used in PWM (pulse width modulation) applications								
<b>Insulation</b>	Class N (200°C - 392°F)								
<b>Min Response</b>	25-100 ms						38-150 ms		
<b>Temperature</b>	32°F to 125°F (0°C to 51.7°C); Max. Fluid Temp. 295°F (146.1°C)								
<b>Lubrication</b>	Not required								
<b>Protection</b>	NEMA 4/4X Encapsulated								
<b>Connection</b>	18mm (DIN 43650A) terminal								
<b>Construction</b>	Noryl plastic body; Santoprene/NSF Approved EPDM seals; Stainless Steel orifice								
<b>Life Cycle</b>	1 Million								
<b>Agency Approvals</b>	NSF/ANSI - 61-G/NSF-372, CE, CSA, UL Recognized								

\* To obtain the most current agency approval information, see the Agency Approval Checklist section on the specific part number's web page.



# 211 Series Water Valves (Stainless Steel)



**NS211YF24F7CG4  
Valve Shown**

GC Valves 211 Series water valves are an excellent choice for potable water applications. They are available with either 316L stainless steel or Noryl bodies. Ported in 3/8, 1/2 or 3/4 inch NPT. Solenoid voltages of 120 VAC, 24 VAC or 24 VDC are available.

## Features

- 2-Ports (2-way), 2-position
- Normally closed (N.C.) configuration
- Piloted diaphragm operator
- 18mm (DIN 43650A) style wiring plug
- 3/8", 1/2" or 3/4" NPT ports
- 120VAC, 24VAC or 24VDC solenoids
- Made in the USA



Also, see our website  
[www.AutomationDirect.com](http://www.AutomationDirect.com)  
for a variety of fitting options



Certified to  
NSF/ANSI 61



**Made  
in the  
USA**

211 Series Water Valves									
Model	NS211YF02F7CG4	NS211YF02F7DG4	NS211YF02F7EG5	NS211YF24F7CG4	NS211YF24F7DG4	NS211YF24F7EG5	NS211YF16F7CG4	NS211YF16F7DG4	NS211YF16F7EG5
<b>Price</b>	\$286.00	\$286.00	\$295.00	\$286.00	\$286.00	\$295.00	\$286.00	\$286.00	\$295.00
<b>Weight (lbs)</b>	1.8	1.8	1.9	1.8	1.8	1.9	1.8	1.8	1.9
<b>Valve Type</b>	2-ports (2-way), 2-position								
<b>Acting</b>	Pilot diaphragm, normally closed								
<b>Port Size</b>	3/8" FNPT	1/2" FNPT	3/4" FNPT	3/8" FNPT	1/2" FNPT	3/4" FNPT	3/8" FNPT	1/2" FNPT	3/4" FNPT
<b>Orifice Size</b>	5/8"	5/8"	3/4"	5/8"	5/8"	3/4"	5/8"	5/8"	3/4"
<b>Cv</b>	4.3	4.3	6.7	4.3	4.3	6.7	4.3	4.3	6.7
<b>Media</b>	Water								
<b>Pressure Range</b>	4-150 psi	4-150 psi	4-150 psi	4-150 psi	4-150 psi	4-150 psi	4-100 psi	4-100 psi	4-100 psi
<b>Voltage (± 10%)</b>	120/110 VAC 50/60 Hz	120/110 VAC 50/60 Hz	120/110 VAC 50/60 Hz	24VAC 50/60 Hz	24VAC 50/60 Hz	24VAC 50/60 Hz	24VDC	24VDC	24VDC
<b>Inrush AC</b>	40VA						-		
<b>Power Consumption</b>	8W	8W	8W	8W	8W	8W	10W	10W	10W
<b>Max Freq</b>	Cannot be used in PWM (pulse width modulation) applications								
<b>Insulation</b>	Class N (200°C - 392°F)								
<b>Min Response</b>	25-100 ms						38-150 ms		
<b>Temperature</b>	32°F to 125°F (0°C to 51.7°C); Max. Fluid Temp. 295°F (146.1°C)								
<b>Lubrication</b>	Not required								
<b>Protection</b>	NEMA 4/4X Encapsulated								
<b>Connection</b>	18mm (DIN 43650A) terminal								
<b>Construction</b>	316 Stainless Steel body; Santoprene/NSF Approved EPDM seals; Stainless Steel orifice								
<b>Life Cycle</b>	1 Million								
<b>Agency Approvals</b>	NSF/ANSI - 61-G/NSF-372, CE, CSA, UL Recognized								

\* To obtain the most current agency approval information, see the Agency Approval Checklist section on the specific part number's web page.

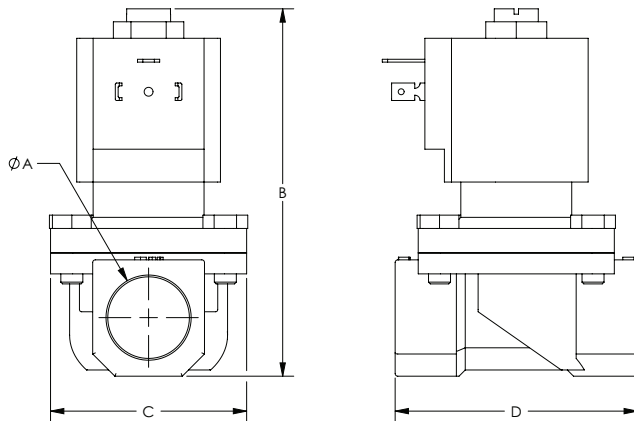


# 211 Series Water Valves

## Dimensions

inches [mm]

211 Series Water Valve Dimensions				
Part No.	A	B	C	D
<b>NS211YF02FPCG4</b>	3/8 NPT	3.63 [92.2]	2.35 [59.7]	2.71 [68.8]
<b>NS211YF02FPDG4</b>	1/2 NPT	3.63 [92.2]	2.35 [59.7]	2.71 [68.8]
<b>NS211YF02FPEG5</b>	3/4 NPT	3.91 [99.3]	2.35 [59.7]	2.73 [69.3]
<b>NS211YF24FPCG4</b>	3/8 NPT	3.63 [92.2]	2.35 [59.7]	2.71 [68.8]
<b>NS211YF24FPDG4</b>	1/2 NPT	3.63 [92.2]	2.35 [59.7]	2.71 [68.8]
<b>NS211YF24FPEG5</b>	3/4 NPT	3.91 [99.3]	2.35 [59.7]	2.73 [69.3]
<b>NS211YF16FPCG4</b>	3/8 NPT	4.04 [102.6]	2.35 [59.7]	2.71 [68.8]
<b>NS211YF16FPDG4</b>	1/2 NPT	4.04 [102.6]	2.35 [59.7]	2.71 [68.8]
<b>NS211YF16FPEG5</b>	3/4 NPT	4.32 [109.7]	2.35 [59.7]	2.73 [69.3]
<b>NS211YF02F7CG4</b>	3/8 NPT	3.63 [92.2]	2.21 [56.1]	2.76 [70.1]
<b>NS211YF02F7DG4</b>	1/2 NPT	3.63 [92.2]	2.21 [56.1]	2.76 [70.1]
<b>NS211YF02F7EG5</b>	3/4 NPT	3.84 [97.5]	2.21 [56.1]	2.73 [69.3]
<b>NS211YF24F7CG4</b>	3/8 NPT	3.63 [92.2]	2.21 [56.1]	2.76 [70.1]
<b>NS211YF24F7DG4</b>	1/2 NPT	3.63 [92.2]	2.21 [56.1]	2.76 [70.1]
<b>NS211YF24F7EG5</b>	3/4 NPT	3.84 [97.5]	2.21 [56.1]	2.73 [69.3]
<b>NS211YF16F7CG4</b>	3/8 NPT	4.04 [102.6]	2.21 [56.1]	2.76 [70.1]
<b>NS211YF16F7DG4</b>	1/2 NPT	4.04 [102.6]	2.21 [56.1]	2.76 [70.1]
<b>NS211YF16F7EG5</b>	3/4 NPT	4.25 [108.0]	2.21 [56.1]	2.73 [69.3]



See our website [www.AutomationDirect.com](http://www.AutomationDirect.com) for complete Engineering drawings.








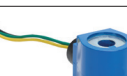




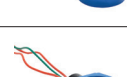



# 211 Series Water Valve Accessories

201 Series Water Valve Accessories				
Kit Photo	Part No.	Description	Price	Weight (lbs)
	<b>KS211AF02G4-NSF</b>	GC Valves rebuild kit, for use with NS211 series AC valves ending CG4 and DG4, includes diaphragm assembly, plunger assembly, plunger tube, plunger spring, body o-ring and operator o-ring.	\$58.00	0.3
	<b>KS211AF15G4-NSF</b>	GC Valves rebuild kit, for use with NS211 series DC valves ending CG4 and DG4, includes diaphragm assembly, plunger-seat disc-spring assembly, plunger tube, body o-ring and operator o-ring.	\$58.00	0.3
	<b>K211G4-NSF</b>	GC Valves repair kit, for use with NS211 series AC valves ending CG4 and DG4, includes diaphragm assembly, seat disc, body o-ring and operator o-ring.	\$16.00	0.2
	<b>K211G415-NSF</b>	GC Valves repair kit, for use with NS211 series DC valves ending CG4 and DG4, includes diaphragm assembly, seat disc, body o-ring and operator o-ring.	\$16.00	0.2
	<b>KS211AF02G5-NSF</b>	GC Valves rebuild kit, for use with NS211 series AC valves ending EG5, includes diaphragm assembly, plunger assembly, plunger tube, plunger spring, body o-ring and operator o-ring.	\$59.00	0.3
	<b>KS211AF15G5-NSF</b>	GC Valves rebuild kit, for use with NS211 series DC valves ending EG5, includes diaphragm assembly, plunger-seat disc-spring assembly, plunger tube, body o-ring and operator o-ring.	\$59.00	0.3
	<b>K211G5-NSF</b>	GC Valves repair kit, for use with NS211 series AC valves ending EG5, includes diaphragm assembly, seat disc, body o-ring and operator o-ring.	\$17.00	0.2
	<b>K211G515-NSF</b>	GC Valves repair kit, for use with NS211 series DC valves ending EG5, includes diaphragm assembly, seat disc, body o-ring and operator o-ring.	\$17.00	0.2



# Water Valve Accessories - Replacement Coils

Water Valve Accessory Coils									
Coil Photo	Part No.	Voltage Rating	Power Rating	Insulation	Connection	Cable Length	Fits Valve Series	Price	Weight (lbs)
	<b>HS4YN02</b>	120VAC	10W	Class N (200°C - 392°F)	18mm (DIN 43650A) style wiring plug	N/A	NS201 and NS301 valves	\$33.00	0.6
	<b>HS4YN04</b>	240VAC	10W	Class N (200°C - 392°F)	18mm (DIN 43650A) style wiring plug	N/A	NS201 and NS301 valves	\$33.00	0.6
	<b>HS4YN24</b>	24VAC	10W	Class N (200°C - 392°F)	18mm (DIN 43650A) style wiring plug	N/A	NS201 and NS301 valves	\$33.00	0.6
	<b>HS4YN16</b>	24VDC	10W	Class N (200°C - 392°F)	18mm (DIN 43650A) style wiring plug	N/A	NS201, NS211 DC and NS301 valves	\$33.00	0.6
	<b>HS4GN02A24</b>	120VAC	10W	Class N (200°C - 392°F)	1/2 in conduit	24.0 in	NS201 and NS301 valves	\$33.00	0.6
	<b>HS4GN04A24</b>	240VAC	10W	Class N (200°C - 392°F)	1/2 in conduit	24.0 in	NS201 and NS301 valves	\$33.00	0.6
	<b>HS4GN24A24</b>	24VAC	10W	Class N (200°C - 392°F)	1/2 in conduit	24.0 in	NS201 and NS301 valves	\$33.00	0.6
	<b>HS4GN16A24</b>	24VDC	10W	Class N (200°C - 392°F)	1/2 in conduit	24.0 in	NS201, NS211 DC and NS301 valves	\$33.00	0.6
	<b>HS3YN02</b>	120VAC	8W	Class N (200°C - 392°F)	18mm (DIN 43650A) style wiring plug	N/A	NS211 AC valves	\$27.00	0.5
	<b>HS3YN04</b>	240VAC	8W	Class N (200°C - 392°F)	18mm (DIN 43650A) style wiring plug	N/A	NS211 AC valves	\$27.00	0.5
	<b>HS3YN24</b>	24VAC	8W	Class N (200°C - 392°F)	18mm (DIN 43650A) style wiring plug	N/A	NS211 AC valves	\$27.00	0.5
	<b>HS3GN02A24</b>	120VAC	8W	Class N (200°C - 392°F)	1/2 in conduit	24.0 in	NS211 AC valves	\$27.00	0.5
	<b>HS3GN04A24</b>	240VAC	8W	Class N (200°C - 392°F)	1/2 in conduit	24.0 in	NS211 AC valves	\$27.00	0.5
	<b>HS3GN24A24</b>	24VAC	8W	Class N (200°C - 392°F)	1/2 in conduit	24.0 in	NS211 AC valves	\$27.00	0.5