



201 Series Water Valves (Noryl)

GC Valves 201 Series water valves are an excellent choice for potable water applications where supply pressure can drop to zero, such as emptying a tank. They are available with either 316L stainless steel or Noryl bodies. Ported for 3/8, 1/2 or 3/4 inch NPT, valves are available with either 120VAC, 24VAC or 24VDC solenoids.



**NS201YF24FPCG4
Valve Shown**

Features

- 2-Ports (2-way), 2-position
- Normally closed (N.C.) configuration
- Piloted diaphragm operator
- Zero differential action
- 18mm (DIN 43650A) style wiring plug
- 3/8", 1/2" or 3/4" NPT ports
- 120VAC, 24VAC or 24VDC solenoids
- Made in the USA



Also, see our website
www.AutomationDirect.com
for a variety of fitting options



Certified to
NSF/ANSI 61



**Made
in the
USA**

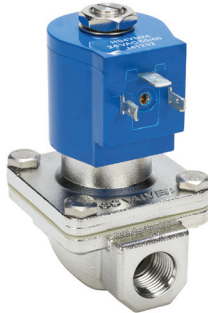
201 Series Water Valve									
Model	NS201YF02FFPCG4	NS201YF02FFPDG4	NS201YF02FFPEG5	NS201YF24FFPCG4	NS201YF24FFPDG4	NS201YF24FFPEG5	NS201YF16FFPCG4	NS201YF16FFPDG4	NS201YF16FFPEG5
Price	\$124.00	\$124.00	\$126.00	\$124.00	\$124.00	\$126.00	\$124.00	\$124.00	\$126.00
Weight (lbs)	1.0	1.0	1.1	1.0	1.0	1.1	1.0	1.0	1.1
Valve Type	2-Ports (2-way), 2-position								
Acting	Piloted diaphragm, normally closed								
Port Size	3/8" FNPT	1/2" FNPT	3/4" FNPT	3/8" FNPT	1/2" FNPT	3/4" FNPT	3/8" FNPT	1/2" FNPT	3/4" FNPT
Orifice Size	5/8"	5/8"	3/4"	5/8"	5/8"	3/4"	5/8"	5/8"	3/4"
Cv	4.3	4.3	6.7	4.3	4.3	6.7	4.3	4.3	6.7
Media	Water								
Pressure Range	0-100 psi	0-100 psi	0-100 psi	0-100 psi	0-100 psi	0-100 psi	0-90 psi	0-90 psi	0-90 psi
Voltage (± 10%)	120/110 VAC 50/60 Hz	120/110 VAC 50/60 Hz	120/110 VAC 50/60 Hz	24VAC 50/60 Hz	24VAC 50/60 Hz	24VAC 50/60 Hz	24VDC	24VDC	24VDC
Inrush AC	54VA						-		
Power Consumption	10W	10W	10W	10W	10W	10W	10W	10W	10W
Max Freq	Cannot be used in PWM (pulse width modulation) applications								
Insulation	Class N (200°C - 392°F)								
Min Response	25-100 ms						38-150 ms		
Temperature	32°F to 125°F (0°C to 51.7°C); Max. Fluid Temp. 295°F (146.1°C)								
Lubrication	Not required								
Protection	NEMA 4/4X Encapsulated								
Connection	18mm (DIN 43650A) terminal								
Construction	Noryl plastic body; Santoprene/NSF Approved EPDM seals; Stainless Steel orifice								
Life Cycle	1 Million								
Agency Approvals*	NSF/ANSI - 61-G/NSF-372, CE, CSA, UL Recognized								

* To obtain the most current agency approval information, see the Agency Approval Checklist section on the specific part number's web page.



201 Series Water Valves (Stainless Steel)

GC Valves 201 Series water valves are an excellent choice for potable water applications where supply pressure can drop to zero, such as emptying a tank. They are available with either 316L stainless steel or Noryl bodies. Ported for 3/8, 1/2 or 3/4 inch NPT, valves are available with either 120VAC, 24VAC or 24VDC solenoids.



NS201YF24F7CG4
Valve Shown

Features

- 2-Ports (2-way), 2-position
- Normally closed (N.C.) configuration
- Piloted diaphragm operator
- Zero differential action
- 18mm (DIN 43650A) style wiring plug
- 3/8", 1/2" or 3/4" NPT ports
- 120VAC, 24VAC or 24VDC solenoids
- Made in the USA



Also, see our website
www.AutomationDirect.com
for a variety of fitting options



Made in the USA

201 Series Water Valves									
Model	NS201YF02F7CG4	NS201YF02F7DG4	NS201YF02F7EG5	NS201YF24F7CG4	NS201YF24F7DG4	NS201YF24F7EG5	NS201YF16F7CG4	NS201YF16F7DG4	NS201YF16F7EG5
Price	\$310.00	\$310.00	\$330.00	\$310.00	\$310.00	\$388.00	\$363.00	\$363.00	\$388.00
Weight (lbs)	1.9	1.9	2.0	1.9	1.9	2.0	1.9	1.9	2.0
Valve Type	2-Ports (2-way), 2-position								
Acting	Piloted diaphragm, normally closed								
Port Size	3/8" FNPT	1/2" FNPT	3/4" FNPT	3/8" FNPT	1/2" FNPT	3/4" FNPT	3/8" FNPT	1/2" FNPT	3/4" FNPT
Orifice Size	5/8"	5/8"	3/4"	5/8"	5/8"	3/4"	5/8"	5/8"	3/4"
Cv	4.3	4.3	6.7	4.3	4.3	6.7	4.3	4.3	6.7
Media	Water								
Pressure Range	0-100 psi	0-100 psi	0-100 psi	0-100 psi	0-100 psi	0-100 psi	0-90 psi	0-90 psi	0-90 psi
Voltage (± 10%)	120/110 VAC 50/60 Hz	120/110 VAC 50/60 Hz	120/110 VAC 50/60 Hz	24VAC 50/60 Hz	24VAC 50/60 Hz	24VAC 50/60 Hz	24VDC	24VDC	24VDC
Inrush AC	54VA						-		
Power Consumption	10W	10W	10W	10W	10W	10W	10W	10W	10W
Max Freq	Cannot be used in PWM (pulse width modulation) applications								
Insulation	Class N (200°C - 392°F)								
Min Response	25-100 ms						38-150 ms		
Temperature	32°F to 125°F (0°C to 51.7°C); Max. Fluid Temp. 295°F (146.1°C)								
Lubrication	Not required								
Protection	NEMA 4/4X Encapsulated								
Connection	18mm (DIN 43650A) terminal								
Construction	316 Stainless steel body; Santoprene/NSF Approved EPDM seals; Stainless Steel orifice								
Life Cycle	1 Million								
Agency Approvals	NSF/ANSI - 61-G/NSF-372, CE, CSA, UL Recognized								

* To obtain the most current agency approval information, see the Agency Approval Checklist section on the specific part number's web page.

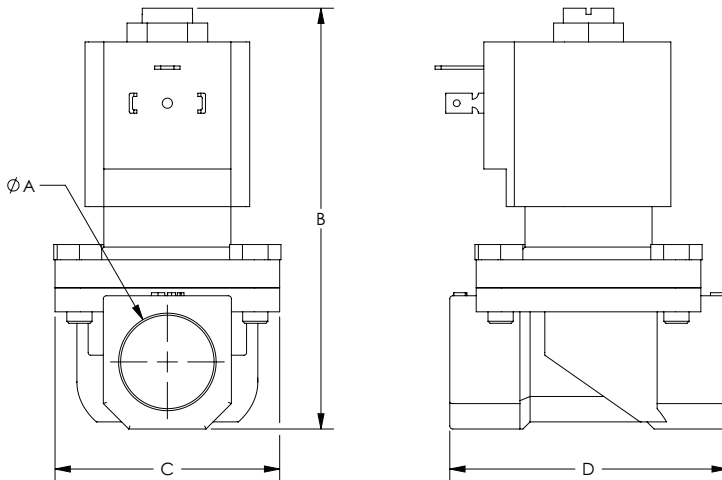


201 Series Water Valves

Dimensions

inches [mm]

201 Series Water Valve Dimensions				
Part No.	A	B	C	D
NS201YF02FPCG4	3/8 NPT	3.90 [99.1]	2.35 [59.7]	2.71 [68.8]
NS201YF02FPDG4	1/2 NPT	3.90 [99.1]	2.35 [59.7]	2.71 [68.8]
NS201YF02FPEG5	3/4 NPT	4.20 [106.7]	2.35 [59.7]	2.73 [69.3]
NS201YF24FPCG4	3/8 NPT	3.90 [99.1]	2.35 [59.7]	2.71 [68.8]
NS201YF24FPDG4	1/2 NPT	3.90 [99.1]	2.35 [59.7]	2.71 [68.8]
NS201YF24FPEG5	3/4 NPT	4.20 [106.7]	2.35 [59.7]	2.73 [69.3]
NS201YF16FPCG4	3/8 NPT	4.04 [102.6]	2.35 [59.7]	2.71 [68.8]
NS201YF16FPDG4	1/2 NPT	4.04 [102.6]	2.35 [59.7]	2.71 [68.8]
NS201YF16FPEG5	3/4 NPT	4.32 [109.7]	2.35 [59.7]	2.73 [69.3]
NS201YF02F7CG4	3/8 NPT	3.93 [99.8]	2.21 [56.1]	2.76 [70.1]
NS201YF02F7DG4	1/2 NPT	3.93 [99.8]	2.21 [56.1]	2.76 [70.1]
NS201YF02F7EG5	3/4 NPT	4.14 [105.2]	2.21 [56.1]	2.73 [69.3]
NS201YF24F7CG4	3/8 NPT	3.93 [99.8]	2.21 [56.1]	2.76 [70.1]
NS201YF24F7DG4	1/2 NPT	3.93 [99.8]	2.21 [56.1]	2.76 [70.1]
NS201YF24F7EG5	3/4 NPT	4.14 [105.2]	2.21 [56.1]	2.73 [69.3]
NS201YF16F7CG4	3/8 NPT	4.04 [102.6]	2.21 [56.1]	2.76 [70.1]
NS201YF16F7DG4	1/2 NPT	4.04 [102.6]	2.21 [56.1]	2.76 [70.1]
NS201YF16F7EG5	3/4 NPT	4.25 [108.0]	2.21 [56.1]	2.73 [69.3]



See our website www.AutomationDirect.com for complete Engineering drawings.

















201 Series Water Valve Accessories

201 Series Water Valve Accessories				
Kit Photo	Part No.	Description	Price	Weight (lbs)
	KS201AF02G4-NSF	GC Valves rebuild kit, for use with NS201 series AC valves ending CG4 and DG4, includes diaphragm assembly, plunger assembly, plunger tube, plunger spring, connecting spring, body o-ring and operator o-ring.	\$58.00	0.4
	KS201AF15G4-NSF	GC Valves rebuild kit, for use with NS201 series DC valves ending CG4 and DG4, includes diaphragm assembly, plunger assembly, plunger tube, plunger spring, connecting spring, body o-ring and operator o-ring.	\$58.00	0.4
	K201G4-NSF	GC Valves repair kit, for use with NS201 series AC valves ending CG4 and DG4, includes diaphragm assembly, seat disc, body o-ring and operator o-ring.	\$18.50	0.2
	KS201AF02G5-NSF	GC Valves rebuild kit, for use with NS201 series AC valves ending EG5, includes diaphragm assembly, plunger assembly, plunger tube, plunger spring, connecting spring, body o-ring and operator o-ring.	\$58.00	0.4
	KS201AF15G5-NSF	GC Valves rebuild kit, for use with NS201 series DC valves ending EG5, includes diaphragm assembly, plunger assembly, plunger tube, plunger spring, connecting spring, body o-ring and operator o-ring.	\$58.00	0.4
	K201G5-NSF	GC Valves repair kit, for use with NS201 series AC valves ending EG5, includes diaphragm assembly, seat disc, body o-ring and operator o-ring.	\$19.50	0.2
	K201G415-NSF	GC Valves repair kit, for use with NS201 series DC valves ending CG4 and DG4, includes diaphragm assembly, seat disc, body o-ring and operator o-ring.	\$18.50	0.2
	K201G515-NSF	GC Valves repair kit, for use with NS201 series AC valves ending EG5, includes diaphragm assembly, seat disc, body o-ring and operator o-ring.	\$19.50	0.2



Water Valve Accessories - Replacement Coils

Water Valve Accessory Coils									
Coil Photo	Part No.	Voltage Rating	Power Rating	Insulation	Connection	Cable Length	Fits Valve Series	Price	Weight (lbs)
	HS4YN02	120VAC	10W	Class N (200°C - 392°F)	18mm (DIN 43650A) style wiring plug	N/A	NS201 and NS301 valves	\$34.00	0.6
	HS4YN04	240VAC	10W	Class N (200°C - 392°F)	18mm (DIN 43650A) style wiring plug	N/A	NS201 and NS301 valves	\$34.00	0.6
	HS4YN24	24VAC	10W	Class N (200°C - 392°F)	18mm (DIN 43650A) style wiring plug	N/A	NS201 and NS301 valves	\$34.00	0.6
	HS4YN16	24VDC	10W	Class N (200°C - 392°F)	18mm (DIN 43650A) style wiring plug	N/A	NS201, NS211 DC and NS301 valves	\$34.00	0.6
	HS4GN02A24	120VAC	10W	Class N (200°C - 392°F)	1/2 in conduit	24.0 in	NS201 and NS301 valves	\$34.00	0.6
	HS4GN04A24	240VAC	10W	Class N (200°C - 392°F)	1/2 in conduit	24.0 in	NS201 and NS301 valves	\$34.00	0.6
	HS4GN24A24	24VAC	10W	Class N (200°C - 392°F)	1/2 in conduit	24.0 in	NS201 and NS301 valves	\$34.00	0.6
	HS4GN16A24	24VDC	10W	Class N (200°C - 392°F)	1/2 in conduit	24.0 in	NS201, NS211 DC and NS301 valves	\$34.00	0.6
	HS3YN02	120VAC	8W	Class N (200°C - 392°F)	18mm (DIN 43650A) style wiring plug	N/A	NS211 AC valves	\$27.50	0.5
	HS3YN04	240VAC	8W	Class N (200°C - 392°F)	18mm (DIN 43650A) style wiring plug	N/A	NS211 AC valves	\$27.50	0.5
	HS3YN24	24VAC	8W	Class N (200°C - 392°F)	18mm (DIN 43650A) style wiring plug	N/A	NS211 AC valves	\$27.50	0.5
	HS3GN02A24	120VAC	8W	Class N (200°C - 392°F)	1/2 in conduit	24.0 in	NS211 AC valves	\$27.50	0.5
	HS3GN04A24	240VAC	8W	Class N (200°C - 392°F)	1/2 in conduit	24.0 in	NS211 AC valves	\$27.50	0.5
	HS3GN24A24	24VAC	8W	Class N (200°C - 392°F)	1/2 in conduit	24.0 in	NS211 AC valves	\$27.50	0.5