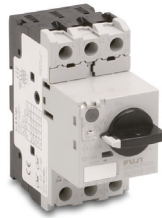


Fuji Duo Series Combination Starter

BM3RHB-xxx Manual Motor Starter Prices			
Part Number	Price	Part Number	Price
BM3RHB-P16	\$55.00	BM3RHB-6P3	\$55.00
BM3RHB-P25	\$55.00	BM3RHB-010	\$59.00
BM3RHB-P40	\$55.00	BM3RHB-013	\$59.00
BM3RHB-P63	\$55.00	BM3RHB-016	\$59.00
BM3RHB-001	\$55.00	BM3RHB-020	\$59.00
BM3RHB-1P6	\$55.00	BM3RHB-025	\$71.00
BM3RHB-2P5	\$55.00	BM3RHB-032	\$89.00
BM3RHB-004	\$55.00		



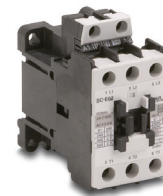
BM3VHB-xxx Manual Motor Starter Prices			
Part Number	Price	Part Number	Price
BM3VHB-010	\$136.00	BM3VHB-032	\$169.00
BM3VHB-013	\$136.00	BM3VHB-040	\$169.00
BM3VHB-016	\$136.00	BM3VHB-050	\$176.00
BM3VHB-020	\$136.00	BM3VHB-063	\$176.00
BM3VHB-025	\$160.00		



Note: When using BM3VHB-xxx MMS in a UL type E application you must also use part number BZ0TKUAB (short circuit contact block).

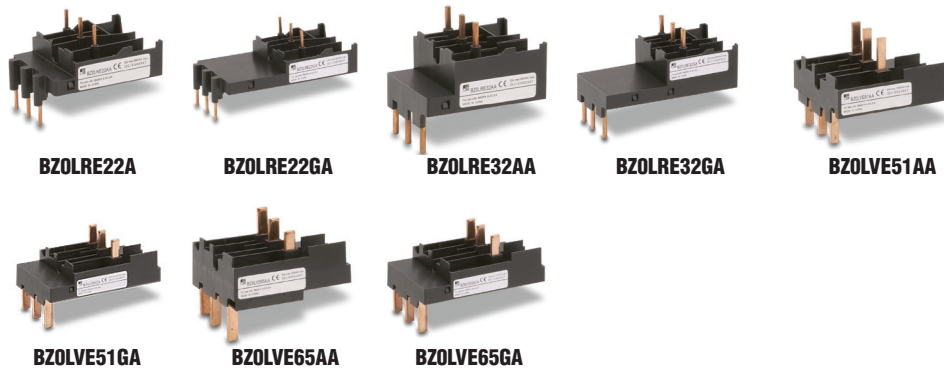
Note: When using BM3RHB-xxx MMS in a UL type E application, you must also use part number BZ0TKUAB (short circuit contact block) and BZ0TCRE (line side terminal cover).

Contactor Prices							
Part Number	Price	Part Number	Price	Part Number	Price	Part Number	Price
SC-E02-24VAC	\$17.00	SC-E05-24VAC	\$35.00	SC-E2S-24VAC	\$72.00	SC-E5-24V	\$206.00
SC-E02-110VAC	\$17.00	SC-E05-110VAC	\$35.00	SC-E2S-110VAC	\$72.00	SC-E5-100V	\$206.00
SC-E02-220VAC	\$17.00	SC-E05-220VAC	\$35.00	SC-E2S-220VAC	\$72.00	SC-E5-200V	\$206.00
SC-E02G-24VDC	\$19.00	SC-E05G-24VDC	\$45.00	SC-E2SG-24VDC	\$85.00	SC-E6-24V	\$262.00
SC-E03-24VAC	\$21.50	SC-E1-24VAC	\$42.00	SC-E3-24VAC	\$81.00	SC-E6-100V	\$262.00
SC-E03-110VAC	\$21.50	SC-E1-110VAC	\$42.00	SC-E3-110VAC	\$81.00	SC-E6-200V	\$262.00
SC-E03-220VAC	\$21.50	SC-E1-220VAC	\$42.00	SC-E3-220VAC	\$81.00	SC-E7-24V	\$306.00
SC-E03G-24VDC	\$30.50	SC-E1G-24VDC	\$49.50	SC-E3G-24VDC	\$99.00	SC-E7-100V	\$306.00
SC-E04-24VAC	\$27.00	SC-E2-24VAC	\$59.00	SC-E4-24VAC	\$83.00	SC-E7-200V	\$306.00
SC-E04-110VAC	\$27.00	SC-E2-110VAC	\$59.00	SC-E4-110VAC	\$83.00		
SC-E04-220VAC	\$27.00	SC-E2-220VAC	\$59.00	SC-E4-220VAC	\$83.00		
SC-E04G-24VDC	\$37.50	SC-E2G-24VDC	\$72.00	SC-E4G-24VDC	\$102.00		



Link Modules and Base Plates

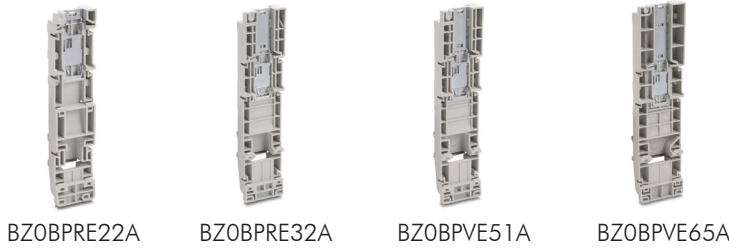
Link Modules



Link modules						
Part Number	Price	Description	Applicable MMS	Applicable Magnetic Contactor	Operating Coil (V)	Weight (g/lb)
BZ0LRE22AA	\$10.00	The link module connects the manual motor starter and magnetic contactor electrically and mechanically.	BM3RHB-xxx	SC-E02, E03, E04, E05-xxxVAC	AC	25/0.055
BZ0LRE22GA	\$13.00			SC-E02G, E03G, E04G, E05G-xxxVDC	DC	35/0.077
BZ0LRE32AA	\$11.50			SC-E1-xxxVAC	AC	45/0.1
BZ0LRE32GA	\$14.50			SC-E1G-xxxVDC	DC	60/0.13
BZ0LVE51AA	\$13.00		BM3VHB-xxx	SC-E1, E2, E2S-xxxVAC	AC	45/0.1
BZ0LVE51GA	\$15.50			SC-E1G, E2G, E2SG-xxxVDC	DC	60/0.13
BZ0LVE65AA	\$15.50			SC-E3-xxxVAC	AC	65/0.14
BZ0LVE65GA	\$18.00			SC-E3G-xxxVDC	DC	80/0.176

Fuji Duo Series Combination Starters

Base plates



Base Plates						
Part Number	Price	Description	Applicable MMS	Applicable Magnetic Contactor	Operating Coil (V)	Weight (g/lb)
BZOBPVE22A	\$14.50	The base plate is a plastic plate to which the combination starter is mounted. The base plate can then be mounted to a panel with screws or to a DIN rail.	BM3RHB-xxx	SC-E02, E03, E04, E05, SC-E02G, E03G, E04G, E05G-xxx	AC/DC	100/0.22
BZOBPVE32A	\$15.50			SC-E1, SC-E1G-xxx	AC/DC	160/0.35
BZOBPVE51A	\$17.00		BM3VHB-xxx	SC-E1, E2, E2S, SC-E1G, E2G, E2SG-xxx	AC/DC	160/0.35
BZOBPVE65A	\$19.00			SC-E3, SC-E3G-xxx	AC/DC	195/0.43

How to reverse the contactor nameplate

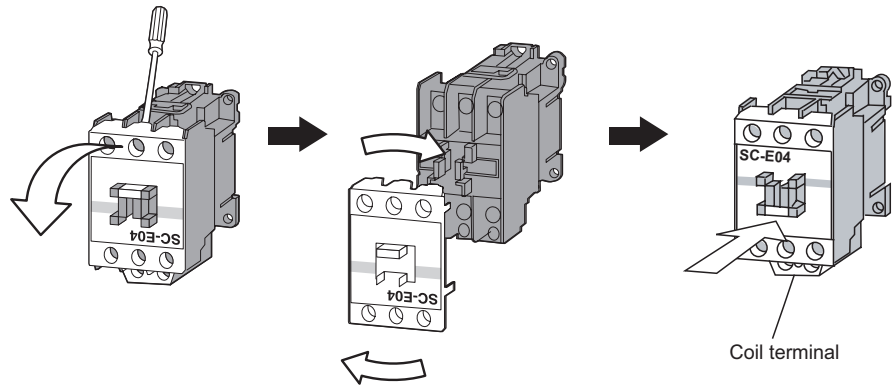
When the manual motor starter and magnetic contactor are configured as a combination starter, the contactor nameplate ends up facing the wrong direction because the coil terminal of the magnetic contactor faces downward. Use the following procedure to turn the nameplate upside down.



SC-E2S

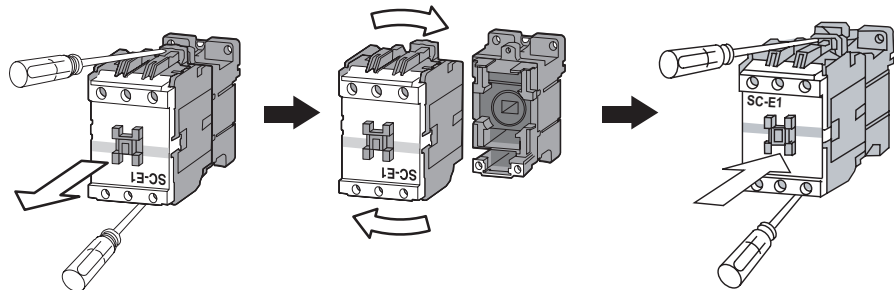
For SC-E02 to SC-E05-xxx contactors

- Insert a flat-blade screwdriver between the arc-chamber of the S phase or V phase and the terminal screw, and lift the arc-chamber to remove it.
- After removing the cover, turn the cover 180 degrees (top to bottom), then re-mount it onto the magnetic contactor.
- Align the cover with the top and bottom terminals and press it on firmly by hand.



For SC-E1 to SC-E3-xxx contactors

- Use a Phillips screwdriver to remove the two screws securing the front and back bodies.
- Remove the front body and turn it 180 degrees (top to bottom), then re-mount it with the screws.
- Make sure that no foreign matter enters the interior of the magnetic contactor during this removal/re-mounting procedure.

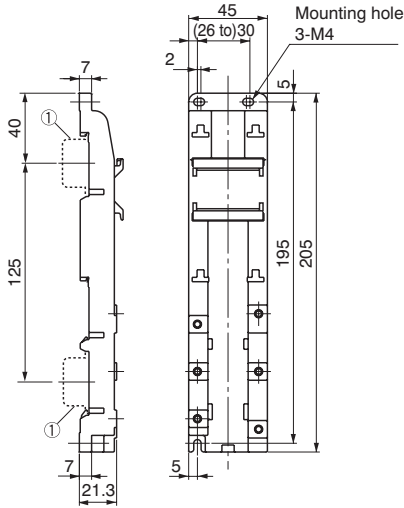


Fuji Duo Series Combination Starters

Dimensions (mm)



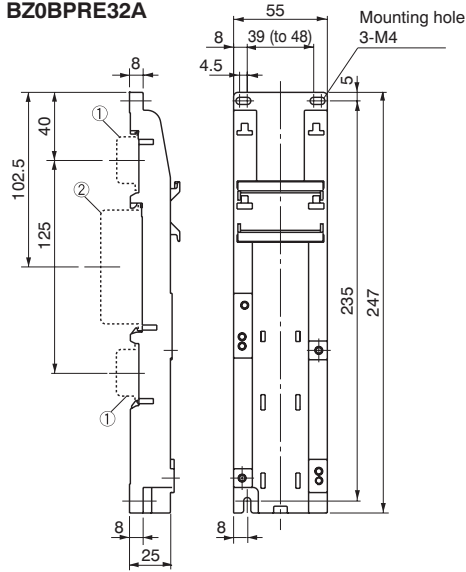
BZ0BPRE22A



①35mm wide rail (height 15mm) x 2

Base plate	MMS	Contactor
BZ0BPRE22A	BM3RHB-xxx	SC-E02, E03, E04, E05-xxx E02G, E03G, E04G, E05G-xxx

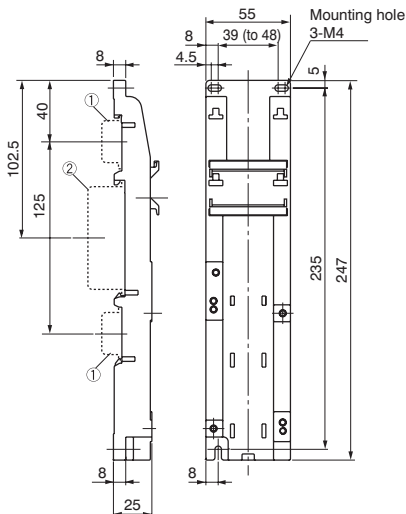
BZ0BPRE32A



①35mm wide rail (height 15mm) x 2
②75mm wide rail (height 25mm) x 1

Base plate	MMS	Contactor
BZ0BPRE32A	BM3RHB-xxx	SC-E1, E1G-xxx

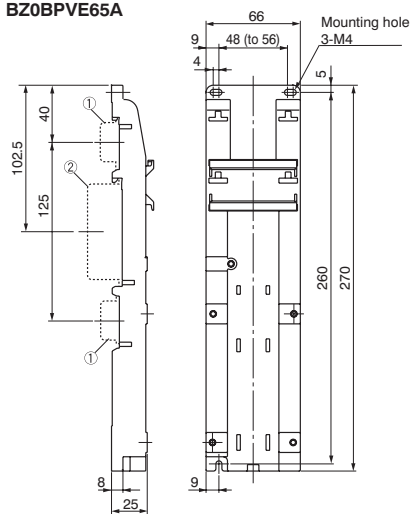
BZ0BPVE51A



①35mm wide rail (height 15mm) x 2
②75mm wide rail (height 25mm) x 1

Base plate	MMS	Contactor
BZ0BPVE51A	BM3VHB-xxx	SC-E1, E2, E2S-xxx E1G, E2G, E2SG-xxx

BZ0BPVE65A



①35mm wide rail (height 15mm) x 2
②75mm wide rail (height 25mm) x 1

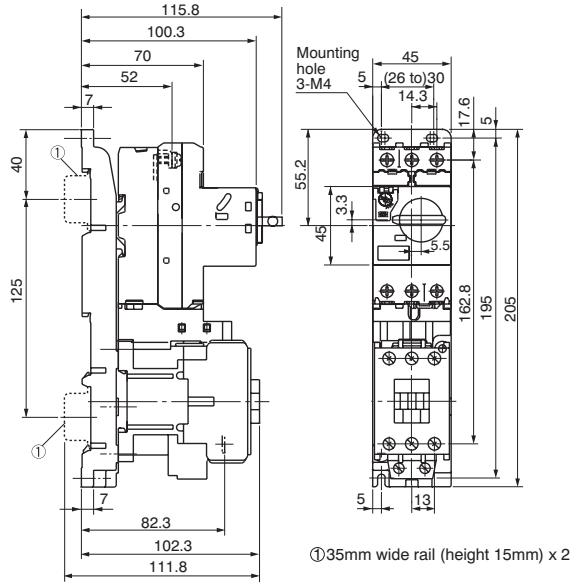
Base plate	MMS	Contactor
BZ0BPVE65A	BM3VHB-xxx	SC-E3, E3G-xxx

Fuji Duo Series Combination Starters



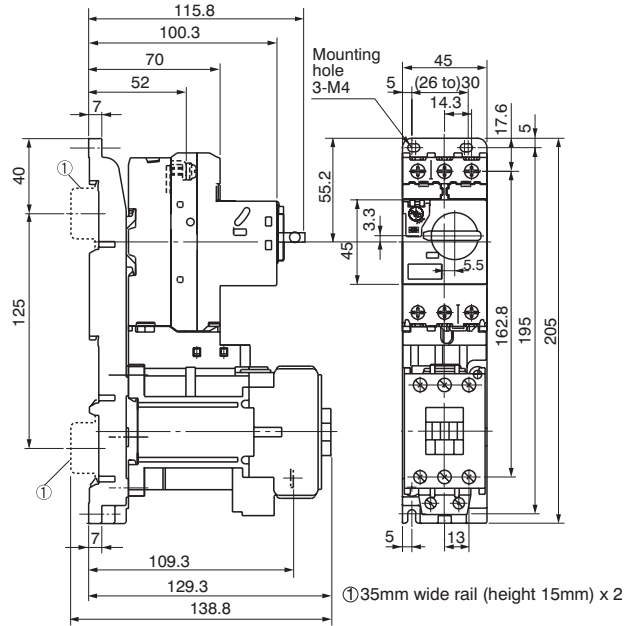
Dimensions (mm)

BM3RHB-xxx + SC-E02 to E05-xxx



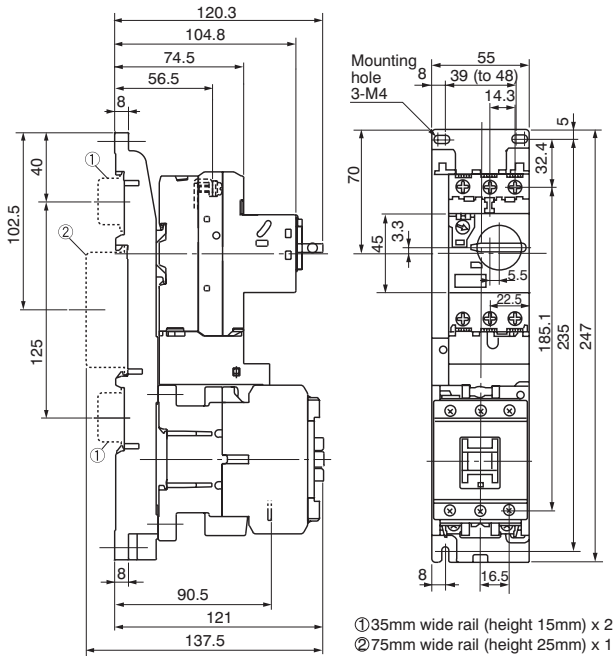
MMS	Contactors	Link module	Base plate
BM3RHB-xxx	SC-E02, E03, E04, E05-xxx	BZ0LRE22AA	BZ0BPPE22A

BM3RHB-xxx + SC-E02G to E05G-xxx



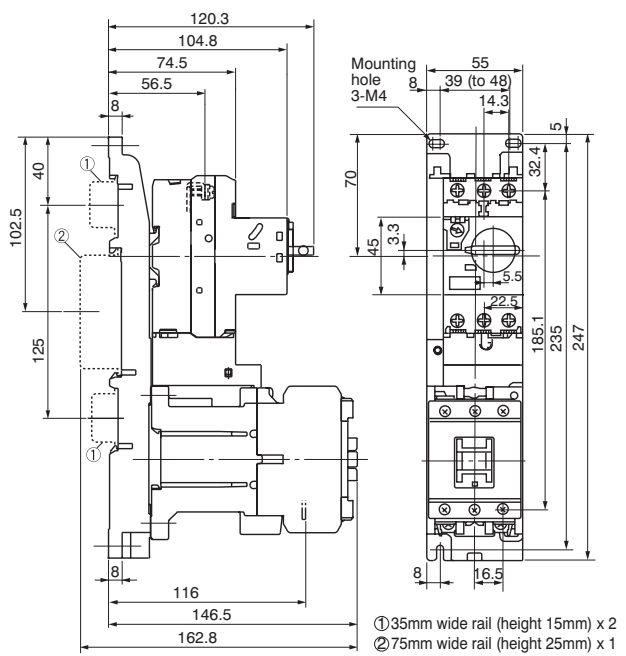
MMS	Contactors	Link module	Base plate
BM3RHB-xxx	SC-E02G, E03G, E04G, E05G-xxx	BZ0LRE22GA	BZ0BPPE22A

BM3RHB-xxx + SC-E1-xxx



MMS	Contactors	Link module	Base plate
BM3RHB-xxx	SC-E1-xxx	BZ0LRE32AA	BZ0BPPE32A

BM3RHB-xxx + SC-E1G-xxx



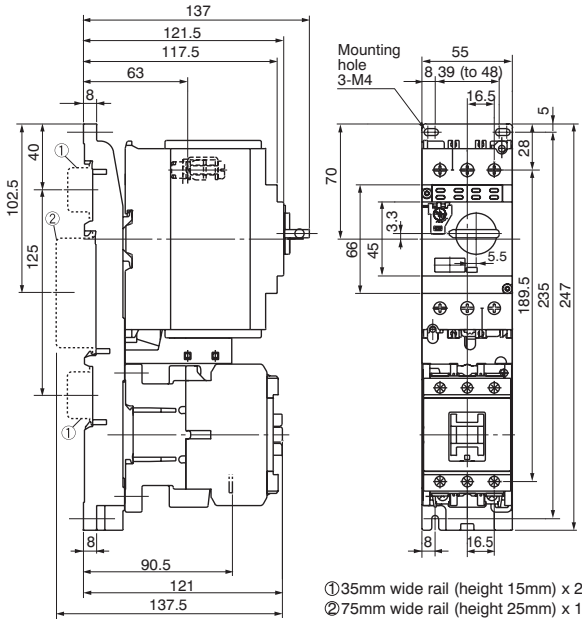
MMS	Contactors	Link module	Base plate
BM3RHB-xxx	SC-E1G-xxx	BZ0LRE32GA	BZ0BPPE32A

Fuji Duo Series Combination Starters

Dimensions (mm)

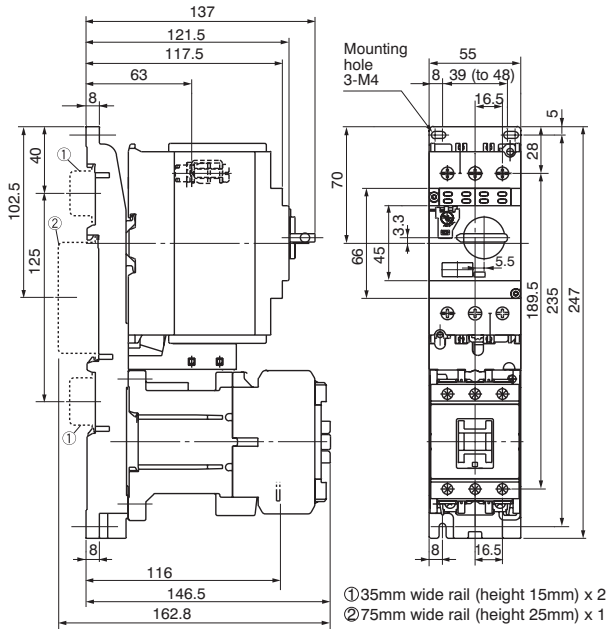


BM3VHB-xxx + SC-E1, E2, E2S-xxx



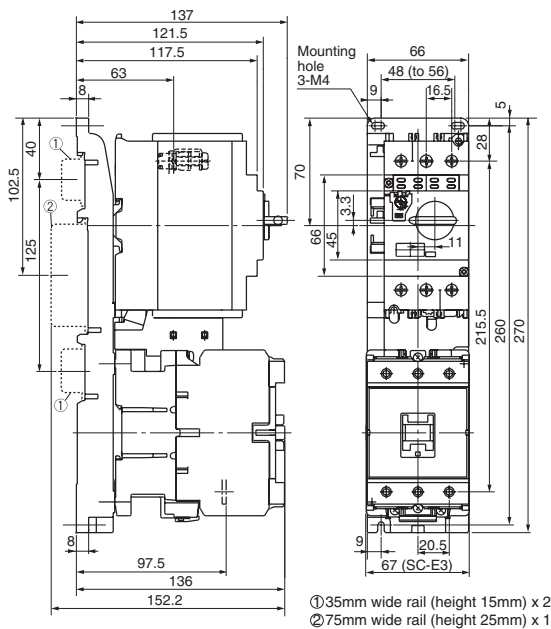
MMS	Contactors	Link module	Base plate
BM3VHB-xxx	SC-E1, E2, E2S-xxx	BZ0LVE51AA	BZ0BPVE51A

BM3VHB-xxx + SC-E1G, E2G, E2SG-xxx



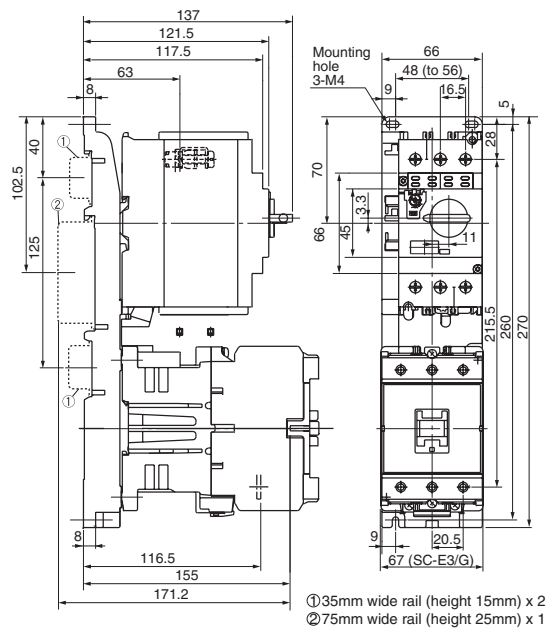
MMS	Contactors	Link module	Base plate
BM3VHB-xxx	SC-E1G, E2G, E2SG-xxx	BZ0LVE51GA	BZ0BPVE51A

BM3VHB-xxx + SC-E3-xxx



MMS	Contactors	Link module	Base plate
BM3VHB-xxx	SC-E3-xxx	BZ0LVE65AA	BZ0BPVE65A

BM3VHB-xxx + SCE3G-xxx



MMS	Contactors	Link module	Base plate
BM3VHB-xxx	SC-E3G-xxx	BZ0LVE65GA	BZ0BPVE65A