

Fuji Electric Accessories for 22mm Command Series Pilot Devices



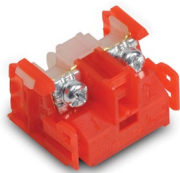
AR9B290

Contact Blocks for Command Series 22mm Pilot Devices				
Part Number	Qty	Price	Contacts	Color
AR9B290	1	\$5.50	NO	Blue
AR9B291	1	\$5.50	NC	Red

Max 6 contacts for non-illuminated momentary devices. Max 4 for alternate action non-illuminated devices.

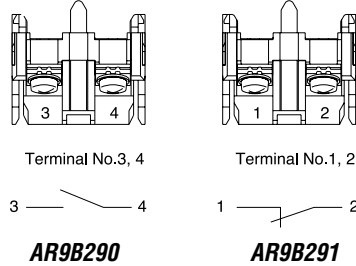
Max 5 contacts for illuminated momentary devices. Max 3 for alternate action illuminated devices.

*Exceeding the maximum number of contacts could affect the mechanical durability of the operators.

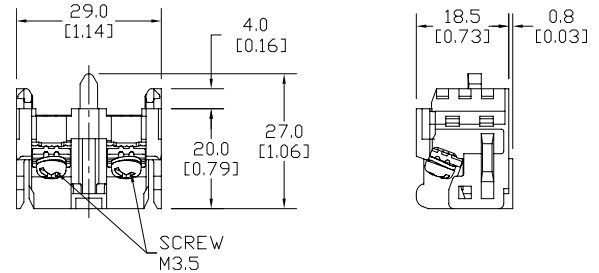


AR9B291

Terminal Layout



Dimensions mm [in]

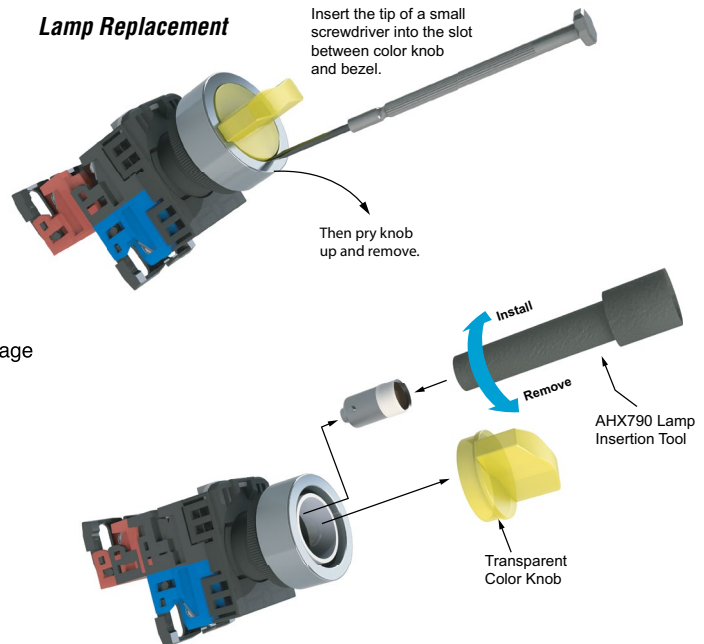


APX510-24R

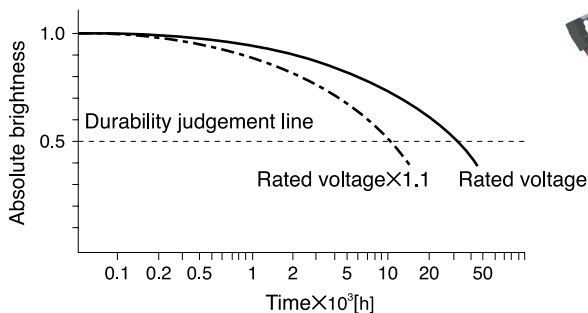
LED Bulbs for Command Series 22mm Pilot Devices								
Part Number	Color	Qty	Price	Use With	Lamp Voltage	Current Consumption	Power Consumption	Lamp Durability
APX510-24R	Red	2	\$13.50	AR22 / DR22 Series	24V AC/DC	12mA AC 11mA DC	0.8 W	30,000h
APX510-24G	Green	2	\$13.50					
APX510-24Y	Yellow	2	\$13.50					
APX510-24S	Blue	2	\$51.00					
APX510-24O	Orange	2	\$13.50					

*Lamp base: Ba9s/13

Lamp Replacement

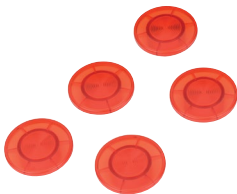


Estimated durability for LED lamps

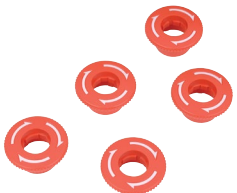


Notes: • Durability at Ta=25°C
• Durability is affected by temperature, humidity, and voltage fluctuation.

Fuji Electric Accessories for 22mm Command Series Pilot Devices

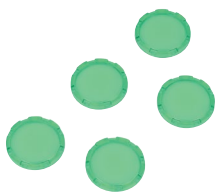


AR9C016-R

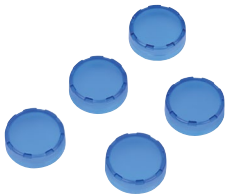


AR9C021-R

Lenses for Command Series 22mm Illuminated Pushbuttons				
Part Number	Color	Qty	Price	Use With
AR9C016-R	Red	5	\$4.00	AR22MOL, AR22M5L
AR9C021-R	Red	5	\$12.50	AR22VOR, AR22VOL
AR9C011-R	Red	5	\$2.00	AR22FOL AR22F5L
AR9C011-G	Green		\$2.00	
AR9C011-Y	Yellow		\$2.00	
AR9C011-S	Blue		\$2.00	
AR9C011-C	Clear		\$2.00	
AR9C012-R	Red	5	\$2.00	AR22EOL
AR9C012-G	Green		\$2.00	
AR9C012-Y	Yellow		\$2.00	
AR9C012-S	Blue		\$2.00	
AR9C012-C	Clear		\$2.00	



AR9C011-G



AR9C012-S

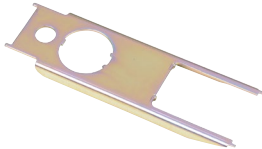


AHX790

Tools and Lock Nut for Use with Command Series 22mm Pilot Devices				
Part Number	Qty	Price	Description	
AHX790	1	\$3.00	Bulb removal tool	
AHX702	1	\$5.25	Wrench/lamp removal tool	
AR9A004	1	\$4.00	Wrench	
AR9R744	5	\$2.00	Lock nut	



AHX702



AR9A004



AR9R744

AHX790 Lamp Insertion Tool

