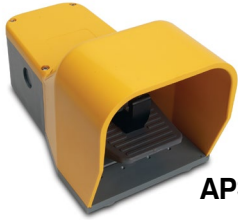


# Foot Switches



APS1211-V0



APS1151-V0

## Applications

Choose these switches for foot switch-operated machines such as shearing machines, spinning machines, spinning lathes, machine tools, wrapping machines, riveting machines, and riveting presses.

AutomationDirect stocks foot switches in these operational formats:

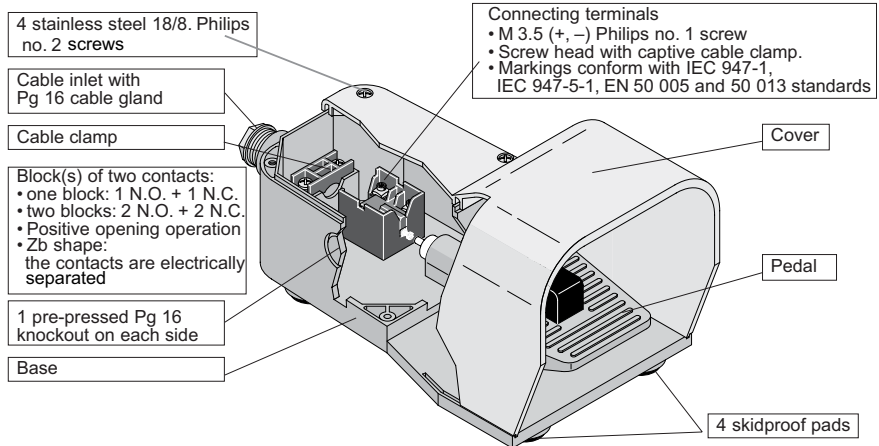
- Free movement (momentary):**  
 Contact position follows pedal movement; actuated when the pedal is pushed down, released when pedal is in state of rest.
- Foot switch locked in neutral position (safety anti-trip momentary):**  
 Same operation as above, after unlocking the pedal with the foot.
- Foot switch latched in low position (maintained):**  
 Same operation as free movement, except that a state of rest is obtained only after pedal is unlatched.



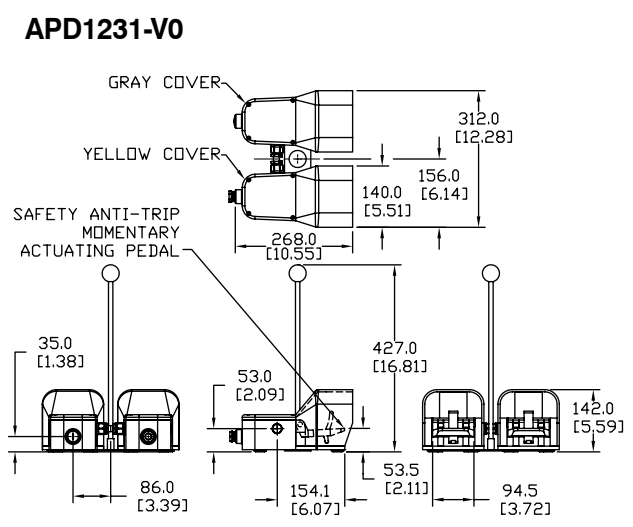
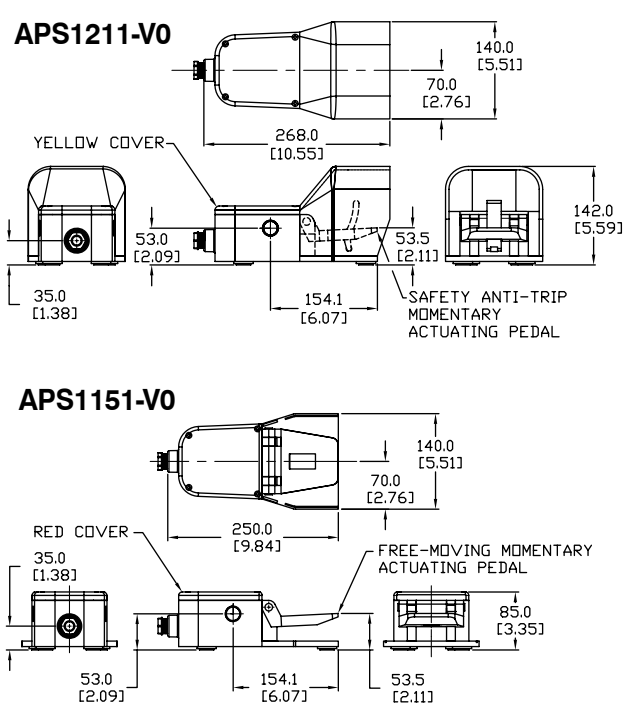
APD1231-V0

## Description

- Plastic Unit Material**  
 Base, cover and pedal of shock-resistant ABS plastic material
- Aluminum Unit Materials**  
 Base and pedal of shock-resistant ABS plastic material; cover of die-cast aluminum
- Double switches include a 16" carrying rod



## Dimensions mm [inches]



# Foot Switches

All footswitches have heavy duty ABS plastic bases.



ABS Plastic Foot Switch Selection			
Part Number	Cover Color	Price	Description
APS1211-VO	Yellow	\$39.50	Single, ABS plastic, safety actuating lever, <b>1 N.O. and 1 N.C.</b> snap action contacts
APS1213-VO	Yellow	\$44.50	Single, ABS plastic, safety actuating lever, <b>2 N.O. and 2 N.C.</b> snap action contacts
APS1151-VO	Half Red	\$39.50	Single, ABS plastic, free-moving mounting, <b>1 N.O. and 1 N.C.</b> snap action contacts
APD1231-VO	One Yellow One Gray	\$86.00	Double, ABS plastic, safety actuating lever, <b>1 N.O. and 1 N.C.</b> snap action contacts for each switch



Die-cast Aluminum Foot Switch Selection			
Part Number	Cover Color	Price	Description
APS1113-VO-M	Yellow	\$59.00	Single, die-cast aluminum, free moving momentary actuating pedal, <b>2 N.O. and 2 N.C.</b> snap action contacts
APS1114-VO-M	Yellow	\$59.00	Single, die-cast aluminum, free moving momentary actuating pedal, <b>2 N.O. and 2 N.C.</b> slow action contacts
APS1123-VO-M	Gray	\$59.00	Single, die-cast aluminum, free moving momentary actuating pedal, <b>2 N.O. and 2 N.C.</b> snap action contacts
APS1124-VO-M	Gray	\$59.00	Single, die-cast aluminum, free moving momentary actuating pedal, <b>2 N.O. and 2 N.C.</b> slow action contacts
APS1143-VO-M	Red	\$59.00	Single, die-cast aluminum, free moving momentary actuating pedal, <b>2 N.O. and 2 N.C.</b> snap action contacts
APS1144-VO-M	Red	\$59.00	Single, die-cast aluminum, free moving momentary actuating pedal, <b>2 N.O. and 2 N.C.</b> slow action contacts
APS1213-VO-M	Yellow	\$65.00	Single, die-cast aluminum, safety anti-trip momentary actuating pedal, <b>2 N.O. and 2 N.C.</b> snap action contacts
APS1214-VO-M	Yellow	\$65.00	Single, die-cast aluminum, safety anti-trip momentary actuating pedal, <b>2 N.O. and 2 N.C.</b> slow action contacts
APS1223-VO-M	Gray	\$65.00	Single, die-cast aluminum, safety anti-trip momentary actuating pedal, <b>2 N.O. and 2 N.C.</b> snap action contacts
APS1224-VO-M	Gray	\$65.00	Single, die-cast aluminum, safety anti-trip momentary actuating pedal, <b>2 N.O. and 2 N.C.</b> slow action contacts
APS1243-VO-M	Red	\$65.00	Single, die-cast aluminum, safety anti-trip momentary actuating pedal, <b>2 N.O. and 2 N.C.</b> snap action contacts
APS1244-VO-M	Red	\$65.00	Single, die-cast aluminum, safety anti-trip momentary actuating pedal, <b>2 N.O. and 2 N.C.</b> slow action contacts
APS1313-VO-M	Yellow	\$65.00	Single, die-cast aluminum, free moving maintained actuating pedal, <b>2 N.O. and 2 N.C.</b> snap action contacts
APS1314-VO-M	Yellow	\$65.00	Single, die-cast aluminum, free moving maintained actuating pedal, <b>2 N.O. and 2 N.C.</b> slow action contacts
APS1323-VO-M	Gray	\$65.00	Single, die-cast aluminum, free moving maintained actuating pedal, <b>2 N.O. and 2 N.C.</b> snap action contacts
APS1324-VO-M	Gray	\$65.00	Single, die-cast aluminum, free moving maintained actuating pedal, <b>2 N.O. and 2 N.C.</b> slow action contacts
APS1343-VO-M	Red	\$65.00	Single, die-cast aluminum, free moving maintained actuating pedal, <b>2 N.O. and 2 N.C.</b> snap action contacts
APS1344-VO-M	Red	\$65.00	Single, die-cast aluminum, free moving maintained actuating pedal, <b>2 N.O. and 2 N.C.</b> slow action contacts
APD1113-VO-M	Yellow	\$139.00	Double, die-cast aluminum, 2 free moving momentary actuating pedals, each with <b>2 N.O. and 2 N.C.</b> snap action contacts
APD1114-VO-M	Yellow	\$139.00	Double, die-cast aluminum, 2 free moving momentary actuating pedals, each with <b>2 N.O. and 2 N.C.</b> slow action contacts
APD1123-VO-M	Gray	\$139.00	Double, die-cast aluminum, 2 free moving momentary actuating pedals, each with <b>2 N.O. and 2 N.C.</b> snap action contacts
APD1124-VO-M	Gray	\$139.00	Double, die-cast aluminum, 2 free moving momentary actuating pedals, each with <b>2 N.O. and 2 N.C.</b> slow action contacts
APD1133-VO-M	One Yellow One Gray	\$139.00	Double, die-cast aluminum, 2 free moving momentary actuating pedals, each with <b>2 N.O. and 2 N.C.</b> snap action contacts
APD1134-VO-M	One Yellow One Gray	\$139.00	Double, die-cast aluminum, 2 free moving momentary actuating pedals, each with <b>2 N.O. and 2 N.C.</b> slow action contacts
APD1213-VO-M	Yellow	\$143.00	Double, die-cast aluminum, 2 safety anti-trip momentary actuating pedals, each with <b>2 N.O. and 2 N.C.</b> snap action contacts
APD1214-VO-M	Yellow	\$143.00	Double, die-cast aluminum, 2 safety anti-trip momentary actuating pedals, each with <b>2 N.O. and 2 N.C.</b> slow action contacts
APD1223-VO-M	Gray	\$143.00	Double, die-cast aluminum, 2 safety anti-trip momentary actuating pedals, each with <b>2 N.O. and 2 N.C.</b> snap action contacts
APD1224-VO-M	Gray	\$143.00	Double, die-cast aluminum, 2 safety anti-trip momentary actuating pedals, each with <b>2 N.O. and 2 N.C.</b> slow action contacts
APD1233-VO-M	One Yellow One Gray	\$143.00	Double, die-cast aluminum, 2 safety anti-trip momentary actuating pedals, each with <b>2 N.O. and 2 N.C.</b> snap action contacts
APD1234-VO-M	One Yellow One Gray	\$143.00	Double, die-cast aluminum, 2 safety anti-trip momentary actuating pedals, each with <b>2 N.O. and 2 N.C.</b> slow action contacts





# IEC Limit Switches Accessories

## Replacement contact blocks

Easily-installed replacement contact blocks fit both heavy-duty IEC and double-insulated limit switches, including mini-DIN models.



Note: Limit switches come standard with snap-action contacts (AGZ11-SWITCH.) To replace contact block, remove limit switch cover. Carefully remove old contact block and install replacement. Contact blocks are supplied with an adapter to fit into larger ABM and ABP switches. Remove this adapter when installing contacts in mini-DIN AAP models.

Replacement Contact Blocks			
Part Number	Price	Contact Type	Action
AGZ11-SWITCH	\$5.25	Snap-action 1 N.C. and N.O.	3ms change-over time
AGZ02-SWITCH	\$5.00	Snap-action 2 N.C.	3ms change-over time
AGX11-SWITCH	\$5.00	Slow-action 1 N.C. and 1 N.O.	Break before make
AGY11-SWITCH	\$5.00	Slow-action overlay 1 N.C. and 1 N.O.	Make before break
AGW02-SWITCH	\$5.50	Slow-action delay 2 N.C.	Simultaneous
AGW20-SWITCH	\$4.00	Slow-action overlay 2 N.O.	Simultaneous

## Additional lever arms, spare parts and accessories for ABM series

Additional Lever Arms/Spare Parts and Accessories			
Part Number	Price	Dimensions	Actuator Type
AGE42-LEVER	\$5.00	Figure 8	Lever with stainless steel roller for E42 models (replacement lever)
AGE44-LEVER	\$5.00	Figure 13	Lever with 50mm diameter rubber roller (fits E42 models)
AGE52-LEVER	\$6.00	Figure 9	Lever with stainless steel roller for E52 models (replacement lever)
AGE54-LEVER	\$6.00	Figure 14	Lever with 50mm diameter rubber roller (fits E52 models)

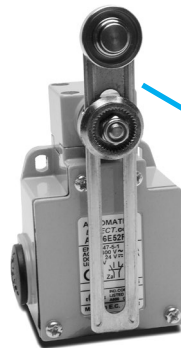
Note: See the Bar Charts page of this section for more information.



### Replacement actuator levers for heavy-duty IEC models

Easily-replaceable actuators for E42 and E52 model limit switches.

Note: These models have an E42 or E52 in the part number, for example, ABM1E42Z11.



### AGE52-LEVER

(Replacement lever shown installed on ABM5E52Z11 limit switch)

### AGE44-LEVER



### AGE54-LEVER

