

DL105 I/O Specifications

F1-130AR

\$240.00

Wiring diagram and specifications

Power requirements

Voltage range.....94–240 VAC (30VA)
.....100–240 VDC (30W)

AC input specifications

Number of input points.....10
Number of commons.....3 (isolated)
Input voltage range.....80–132 VAC
.....90–150 VDC
Input current.....6mA @ 132VAC
.....6.8 mA @ 150VDC
ON current/voltage level.....> 4mA / 80VAC
.....> 4mA / 90VDC
OFF current/voltage level.....< 2mA / 45VAC
.....< 2mA / 60VDC
OFF to ON response.....< 8ms
ON to OFF response.....< 15ms
Fuses.....None

Relay output specifications

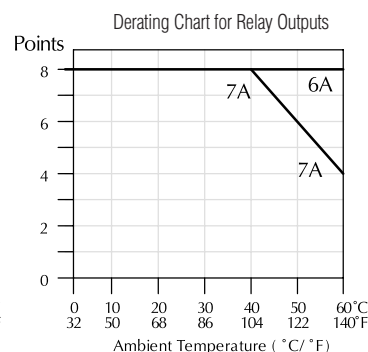
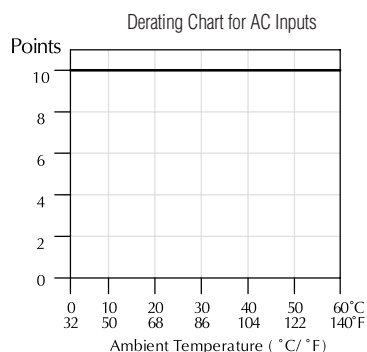
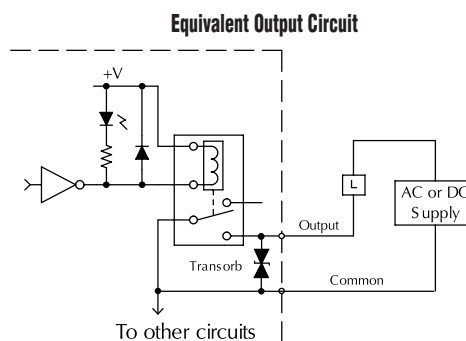
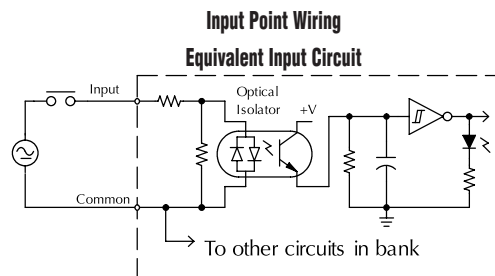
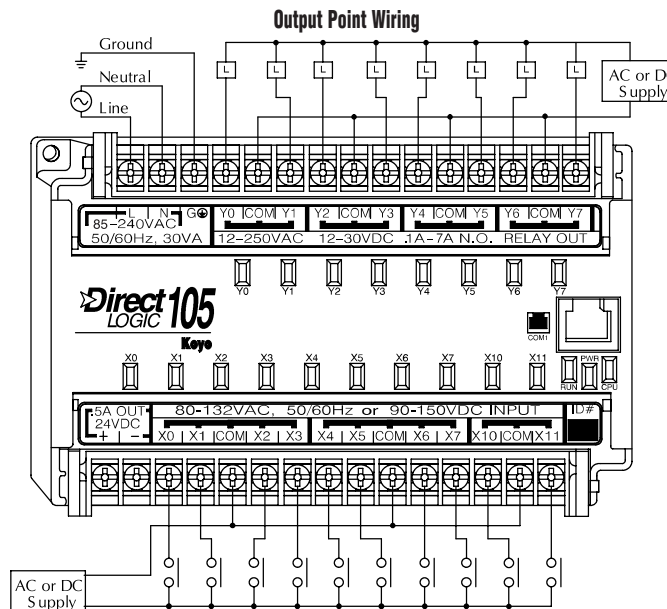
Number of output points.....8
Number of commons.....4 (isolated)
Output circuitry.....Relay
Output voltage range.....12–250 VAC
.....12–30 VDC
Maximum voltage.....265VAC, 150VDC
Maximum current.....7A/point (see derating)
Maximum inrush current.....12A
Minimum load.....10mA
Minimum OFF resistance.....100 M Ω @ 500 VDC
OFF to ON response.....15ms
ON to OFF response.....5ms
Fuses.....None (external recommended)

Auxiliary 24 VDC Output

Voltage range.....21.6–26.4 VDC
Output.....500mA max., isolated
Ripple.....less than 200mV p-p

Typical Relay Life (Operations) at Room Temperature

Voltage and Type of Load	Load Current		
	50 mA	5 A	7 A
24 VDC Resistive	10M	600K	300K
24 VDC Solenoid	—	150K	75K
110 VAC Resistive	—	600K	300K
110 VAC Solenoid	—	500K	200K
220 VAC Resistive	—	300K	150K
220 VAC Solenoid	—	250K	100K



Features and Specifications

The DL105 micro PLCs contain the CPU, power supply and I/O all in the same housing. If you examine the CPU Specifications table, you'll see that we included many features found in our modular CPUs.

Review the specs

Make sure these features can satisfy the requirements of your application. Since these units are completely self-contained, you cannot expand the system or replace the CPU as you would in a modular system.

System capacity

System capacity is the ability to accommodate a variety of applications. For ladder memory, most Boolean instructions require one word. Some other instructions, such as timers, counters, etc., require two or more words. Our V-memory words are useful for data storage, etc.

Performance

The performance is simply the scan time, which is the amount of time required to read the inputs, solve the RLL program and update the outputs.

Instructions and diagnostics

Make sure the unit offers the instructions you need.

Communications

All DL105 units offer one RS-232 port, capable of 9600 baud.

Specialty features

With the DC input and/or DC output versions, we also offer several high-speed I/O features.

AC-powered units

F1-130AR

10 AC inputs, 8 relay outputs, 7A/point

F1-130DR

10 DC inputs, 4 inputs are filtered inputs, can also be configured as a single 5kHz high-speed counter, interrupt input, or pulse catch input
8 relay outputs, 7A/point

Programming

Handheld programmer.....D2-HPP.....	\$445.00
DirectSOFT Programming for Windows	
PC-DSOFT6.....	\$417.00
PC-DS100.....	\$0.00
PC-R60-U (upgrade).....	\$263.00

Note: Either high-speed input or pulse output can be used, but not in the same configuration.

DL105 CPU Specifications

System capacity

Total memory available (words).....	2.4K
Ladder memory (words).....	2,048 EEPROM
V-memory (words).....	384
User V.....	256
Non-volatile user V.....	128
Battery backup.....	No
Total I/O.....	18
Inputs.....	10
Outputs.....	8
I/O expansion.....	No

Performance

Contact execution (Boolean).....	3.3 µs
Typical scan (1K Boolean) ¹	5–6 ms

Instructions and diagnostics

RLL ladder style.....	Yes
RLL <i>PLUS</i> /flowchart style (Stages).....	Yes/256
Run-time editing.....	Yes
Supports Overrides.....	No
Variable/fixed scan.....	Variable
Instructions.....	91
Control relays.....	256
Timers.....	64
Counters.....	64
Immediate I/O.....	Yes
Subroutines.....	No
For/next loops.....	No
Timed interrupt.....	Yes
Integer math.....	Yes
Floating-point math.....	No
PID.....	No
Drum sequencers.....	Yes
Bit of word.....	No
ASCII print.....	No
Real-time clock/calendar.....	No
Internal diagnostics.....	Yes
Password security.....	Multi-level
System and user error log.....	No

Communications

Built-in ports.....	one, RS-232-C
K-sequence (proprietary protocol).....	Yes
DirectNET™.....	No
MODBUS master/slave.....	No
ASCII out.....	No
Baud rate (fixed).....	9600 baud

Specialty features

Filtered inputs.....	Yes ²
Interrupt input.....	Yes ²
High-speed counter.....	Yes, 5kHz ²
Pulse output.....	Yes, 7kHz ²
Pulse catch input.....	Yes ²

1- Our 1K program includes contacts, coils, and scan overhead. If you compare our products to others, make sure you include their scan overhead.

2- Input features are only available on units with DC inputs. Output features are only available on units with DC outputs.

DL105 Hardware Features

CPU status indicators

RUN.....ON.....	CPU is in RUN mode
.....OFF.....	CPU is in PROGRAM mode
PWR.....ON.....	CPU power good
.....OFF.....	CPU power failure
CPU.....ON.....	CPU internal diagnostics
.....OFF.....	has detected an error
.....OFF.....	CPU is OK

Mode control

The DL105 units do not have mode switches like many of our modular CPUs. You can set the unit (using special V-memory locations) so that it will power up in RUN mode.

Communications port

Protocol.....	K-sequence slave
Devices.....	Can connect with HPP,DirectSOFT, DV-1000,C-More Panels
Specs.....6P6C RJ12 connector
.....RS-232-C, 9,600 baud,
.....Odd parity,
.....Fixed station address (1),
.....8 data bits (one start,
.....one stop bit),
.....Asynchronous, half-duplex, DTE

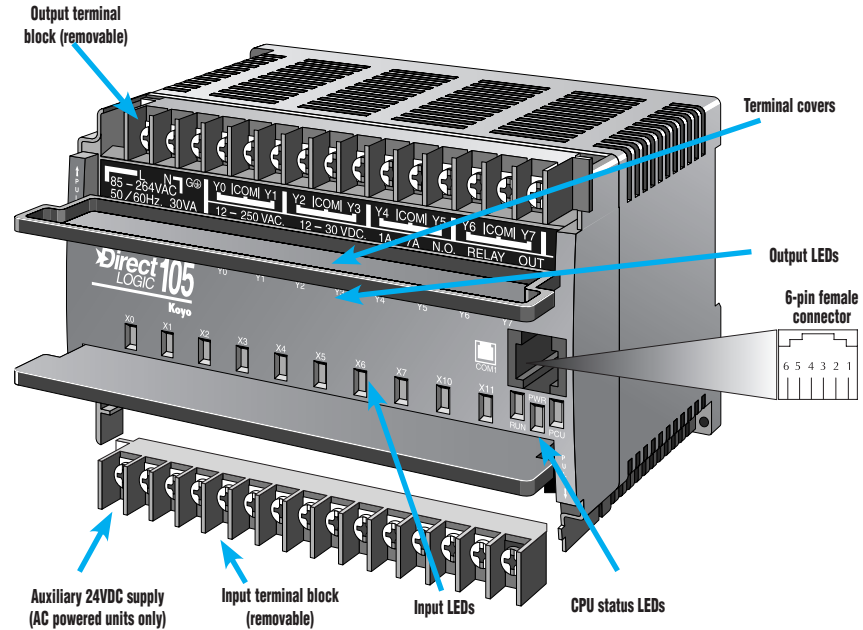
RJ12 Connector Port 1 Pinout

Pin.....	Signal
1.....	0V
2.....	5V
3.....	RS-232 Data in
4.....	RS-232 Data out
5.....	5V
6.....	0V

Fixed EEPROM memory

The DL105 units offer built-in EEPROM memory.

NOTE: Terminals accept 16–24 AWG. For 16 AWG, use type TFFN or Type MTW. Other types of 16 AWG may be acceptable, but it really depends on the thickness of the wire insulation.



Power Supply and Type of I/O

Power supply options

This product family offers units that operate on 110/220 VAC and 12/24 VDC. Choosing the power supply is probably the most important consideration when specifying a DL105 system, since not all I/O combinations are offered with each power supply option. The table to the right provides the I/O choices and power supply specifications for each type unit.

Choosing the I/O

The DL105 product family offers several different combinations of I/O points. Once you have chosen the power supply option, you need to choose the unit that offers the type of I/O points needed in your application.

Fixed I/O

All DL105 Micro PLCs have “fixed” I/O that is updated on every scan. This means that all units have 10 inputs and 8 outputs, regardless of the actual type of points on the units (DC in/Relay out, DC in/DC out, etc.) The DL105 micro PLC is non-expandable, so you cannot add I/O points. If you are concerned about future system expansion, check our DL06 (36 base I/O expandable to 100 total I/O), or the DL205 micro-modular product family. The DL205 also offers a wide array of features and flexible I/O arrangements with several different base sizes.

Power Supply Options	
Specification	AC Powered Units
Part Numbers	F1-130AR F1-130DR F1-DVNET-AR, F1-DEVNET-DD F1-DVNET-DR
Voltage Withstand (dielectric)	One minute @ 1500VAC between primary, secondary and field ground
Insulation Resistance	> 10MΩ @ 500VDC
External Power Requirement	85–132 VAC (110 nominal) 170–264 VAC (220 nominal) 100–264 VDC (125 nominal)
Auxiliary 24 VDC Output	500mA max.
Maximum Inrush Current	12A
Maximum Power	30VA max.

Addresses automatically assigned

The DL105 uses automatic addressing, so for the vast majority of applications, there is no setup required. We use octal addressing for many of our products, which means there are no 8s or 9s. The first eight input points use addresses X0-X7, and the last two input points use X10 and X11. If you plan on using the high-speed counting features, there is some very minimal setup required in special V-memory locations.

AC-powered units

Part No.	I/O Mix
F1-130AR.....	10 AC in8 relay out
F1-130DR.....	10 DC in8 relay out

