

EZTouch 15" TFT Color Slim Bezel Panels

15" slim bezel color panel (15.0" TFT)

The 15" color EZTouch slim bezel panels have a 15.0" diagonal touch screen, with a 640x480 pixel resolution and feature a TFT LCD (liquid crystal display). All models feature a low-profile slim bezel design that provides a small footprint on your enclosure.

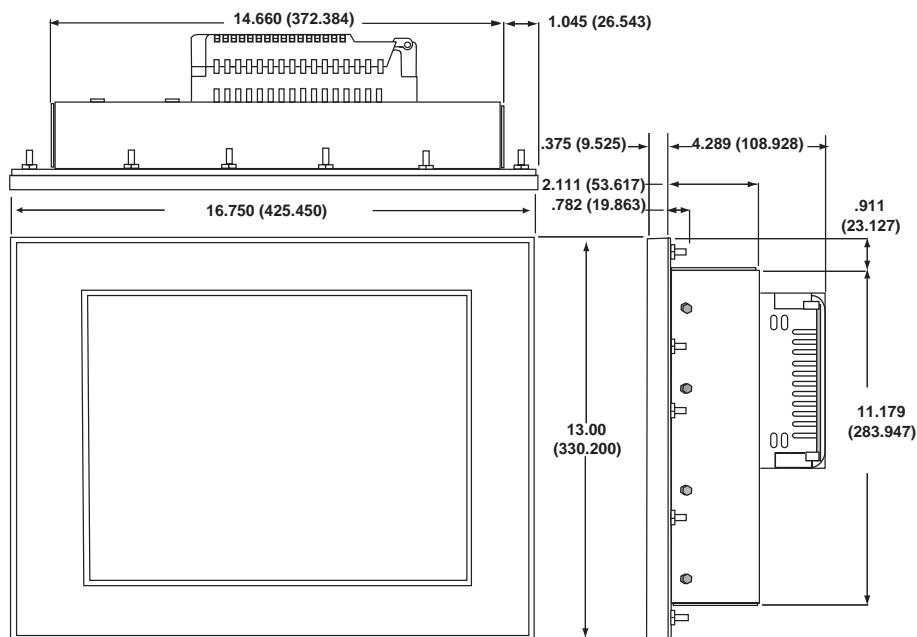
Features

- 15.0" diagonal color TFT LCD
- Low-profile slim bezel design
- 128 colors
- NEMA1, FDA compliant material
- 640x480 pixel resolution
- 1MB RAM expandable to 1.5MB or 2MB
- 1MB or 2MB option flash card for memory backup
- Ethernet card optional (EZ-ETHERNET)
- Modbus TCP/IP card optional (EZ-ETHERPLUS)
- 25,000 hour expected bulb half-life
- 192 touch cells (16x12)
- 1/4" gasket and four DIN mounting clips for NEMA 1
- 4.29" (108.9mm) installed depth



NEMA 1, FDA compliant

- **Part No. EZ-T15C-FS**
 - includes all serial drivers and accepts optional Ethernet cards
- **Part No. EZ-T15C-FSH**
 - includes Data Highway Plus interface
- **Part No. EZ-T15C-FSD**
 - includes DeviceNet interface
- **Part No. EZ-T15C-FSE**
 - includes Ethernet/IP (Allen-Bradley) interface
- **Part No. EZ-T15C-FSM**
 - includes MODBUS Plus interface
- **Part No. EZ-T15C-FSP**
 - includes Profibus DP interface
- **Part No. EZ-T15C-FST**
 - includes MODBUS TCP/IP interface



EZTOUCH 10" TFT COLOR SLIM BEZEL PANELS

10" slim bezel color panel (10.4" TFT)

The 10" color EZTouch slim bezel panels have an 10.4" diagonal touch screen, with a 640 x 480 pixel resolution and feature a TFT LCD (liquid crystal display). All models feature a low-profile slim bezel design that provides a small footprint on your enclosure.

Features

- 10.4" diagonal color TFT LCD
- Low-profile slim bezel design
- 128 colors
- NEMA 4, 4X (indoor) or NEMA 1, FDA compliant material
- 640 x 480 pixel resolution
- 512K RAM expandable to 1.5MB
- 512K, 1MB or 2MB option flash card for memory backup
- Ethernet card optional (EZ-ETHERNET)
- Modbus TCP/IP card optional (EZ-ETHERPLUS)
- 25,000 hour expected bulb half-life
- 192 touch cells (16x12)
- 1/4" gasket and four DIN mounting clips for NEMA 1
- 1/4" o-ring gasket and eight mounting studs for NEMA 4, 4X (indoor)
- 2.38" (60.53mm) installed depth

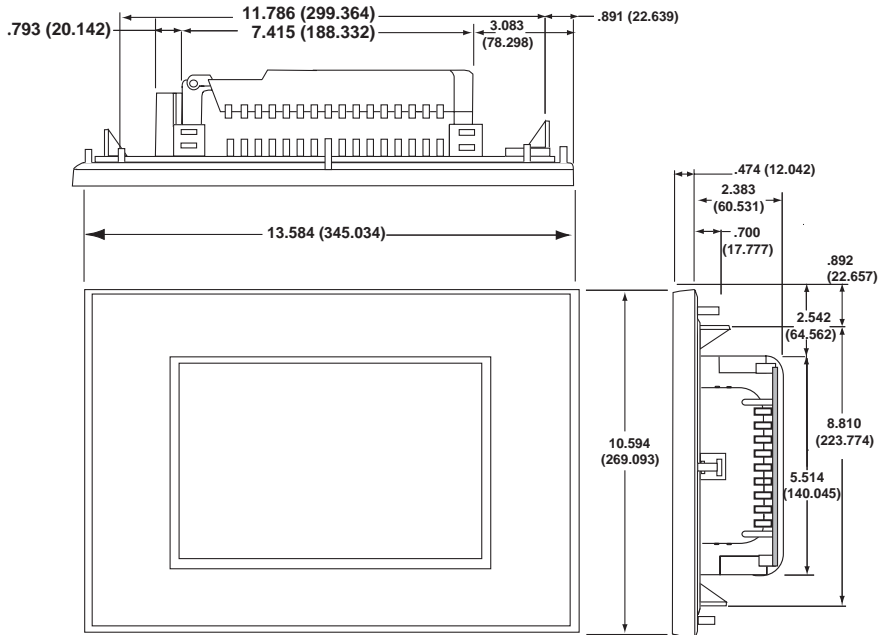


NEMA 1, FDA compliant

- **Part No. EZ-T10C-FS**
• includes all serial drivers and accepts optional Ethernet cards
- **Part No. EZ-T10C-FSH**
• includes Data Highway Plus interface
- **Part No. EZ-T10C-FSD**
• includes DeviceNet interface
- **Part No. EZ-T10C-FSE**
• includes Ethernet/IP (Allen-Bradley) interface
- **Part No. EZ-T10C-FSM**
• includes MODBUS Plus interface
- **Part No. EZ T10C-FSP**
• includes Profibus DP interface
- **Part No. EZ T10C-FST**
• includes MODBUS TCP/IP interface

NEMA 4, 4X (indoor)

- **Part No. EZ-T10C-F**
- **Part No. EZ-T10C-FH**
• includes Data Highway Plus interface



EZTOUCH 8" STN COLOR SLIM BEZEL PANELS

8" slim bezel color panel (8.2" STN)

The 8" color EZTouch slim bezel panels have an 8.2" diagonal touch screen, with a 640x480 pixel resolution and feature an STN LCD (liquid crystal display). Both feature a low-profile slim bezel design that provide a small footprint on your enclosure.

Features

- 8.2" diagonal color STN LCD
- Low-profile slim bezel design
- 128 colors
- NEMA 4, 4X (indoor) or NEMA 1, FDA compliant material
- 640 x 480 pixel resolution
- 512K RAM expandable to 1.5MB
- 512K, 1MB or 2MB option flash card for memory backup
- Ethernet card optional (EZ-ETHERNET)
- Modbus TCP/IP card optional (EZ-ETHERPLUS)
- 25,000 hour expected bulb half-life
- 192 touch cells (16x12)
- 1/4" gasket and four DIN mounting clips for NEMA 1
- 1/4" o-ring gasket and eight mounting studs for NEMA 4, 4X (indoor)
- 2.76" (70.10mm) installed depth

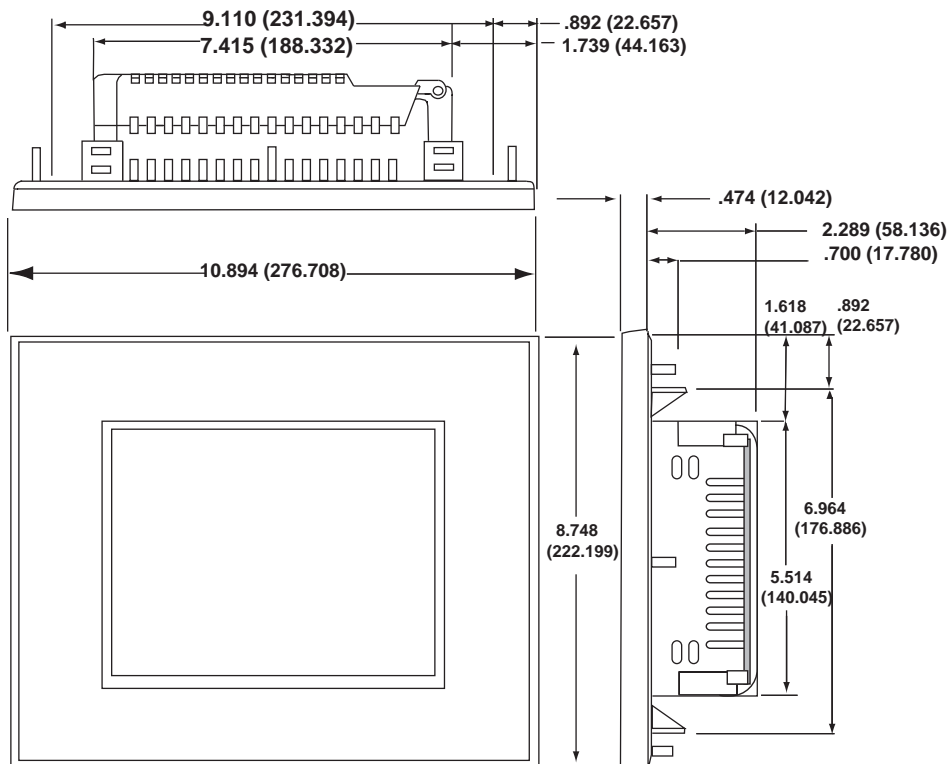


NEMA 1, FDA compliant

- **Part No. EZ-S8C-FS**
 - includes all serial drivers and accepts optional Ethernet cards
- **Part No. EZ-S8C-FSH**
 - includes Data Highway Plus interface
- **Part No. EZ-S8C-FST**
 - includes MODBUS TCP/IP interface

NEMA 4, 4X (indoor)

- **Part No. EZ-S8C-F**
- **Part No. EZ-S8C-FH**
 - includes Data Highway Plus interface



EZTouch 6" STN Color Slim Bezel Panels

6" slim bezel color panel (5.7" STN)

The 6" color EZTouch slim bezel panels have a 5.7" diagonal touch screen, with a 320x240 pixel resolution and feature an STN LCD (liquid crystal display). There are two 6" color panels to choose from: one for Koyo PLCs/Think & Do only and one for multiple PLC brands including Koyo PLCs/Think & Do. Both feature a low-profile slim bezel design that provide a small footprint on your enclosure.

6" color slim panel for Koyo PLCs/Think & Do only

- 5.7" diagonal color STN LCD
- Low-profile slim bezel design
- 128 colors
- NEMA 1, FDA compliant material
- 320x240 pixel resolution
- 512K RAM expandable to 1.5MB
- 512K, 1MB or 2MB option flash card for memory backup
- No Ethernet card support
- 25,000 hour expected bulb half-life
- 192 touch cells (16x12)
- 1/4" gasket and four DIN mounting clips for NEMA 1
- 2.3" (59.0mm) installed depth

NEMA 1, FDA compliant

- **Part No. EZ-S6C-KS**
- includes Koyo PLCs / Think & Do drivers only (no Ethernet card support)

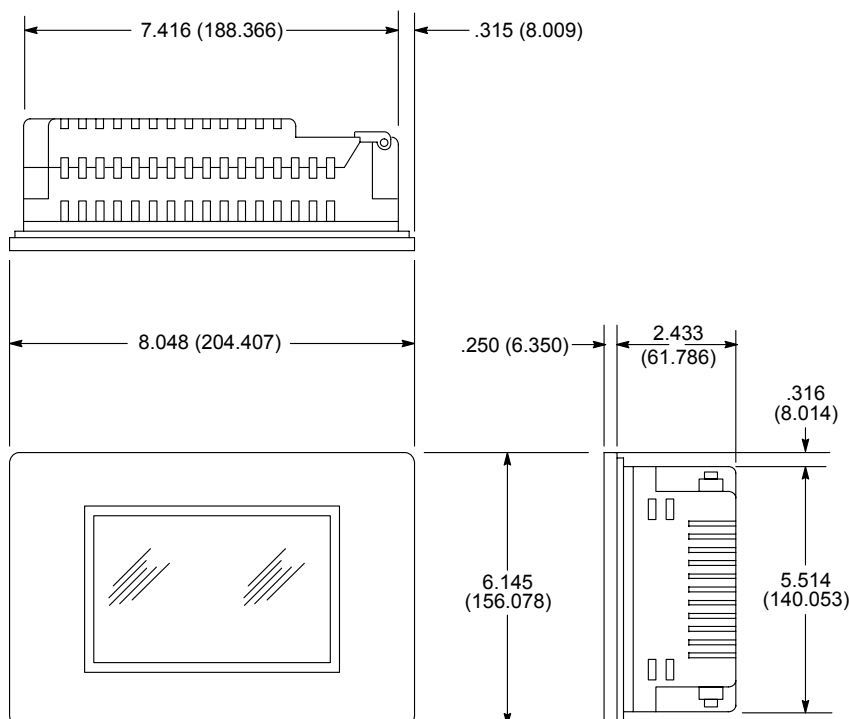
6" color slim panel for multiple PLC brands

- 5.7" diagonal color STN LCD
- Low-profile slim bezel design
- 128 colors
- NEMA 1, FDA compliant material
- 320x240 pixel resolution
- 512K RAM expandable to 1.5MB
- 512K, 1MB or 2MB option flash card for memory backup
- Ethernet card optional (EZ-ETHERNET)
- Modbus TCP/IP card optional (EZ-ETHERPLUS)
- 25,000 hour expected bulb half-life
- 192 touch cells (16x12)
- 1/4" gasket and four DIN mounting clips for NEMA 1
- 2.3" (59.0mm) installed depth



NEMA 1, FDA compliant

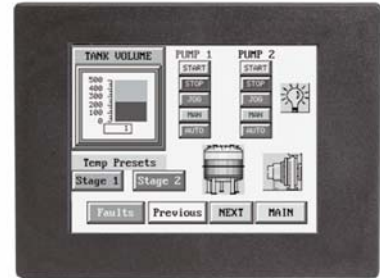
- **Part No. EZ-S6C-FS**
- includes all serial drivers and accepts optional Ethernet cards
- **Part No. EZ-S6C-FSH**
- includes Data Highway Plus interface
- **Part No. EZ-S6C-FST**
- includes MODBUS TCP/IP interface



EZTouch 6" Mono Slim Bezel Panels

6" mono slim bezel EZTouch panels (5.7" STN)

The 6" mono EZTouch panels have a 5.7" diagonal touch screen, with a 320x240 pixel resolution and feature an STN LCD (liquid crystal display) with 16 shades of gray. There are two mono 6" panels to choose from: one with reduced memory/no Ethernet option (with 48 touch cells) and one with full 512K memory and an Ethernet option (with 192 touch cells). Both feature a low-profile slim bezel design for a small footprint on your enclosure.



6" mono slim bezel panel with reduced memory

- 5.7" diagonal mono STN LCD
- 16 shades of gray
- NEMA 1, FDA compliant material
- 320x240 pixel resolution
- 256K RAM, not expandable
- No Ethernet card support
- 25,000 hour expected bulb half-life
- 48 touch cells (8x6)
- 1/4" gasket and four DIN mounting clips for NEMA 1
- 2.3" (59.0mm) installed depth

NEMA 1, FDA compliant

- **Part No. EZ-S6M-RS**
- includes all serial drivers (no Ethernet card support)

6" mono slim bezel panel with full memory

- 5.7" diagonal Color STN LCD
- 16 shades of gray
- NEMA 1, FDA compliant material
- 320x240 pixel resolution
- 512K RAM expandable to 1.5MB
- 512K, 1MB or 2MB option flash card for memory backup
- Ethernet card optional (EZ-ETHERNET)
- Modbus TCP/IP card optional (EZ-ETHERPLUS)
- 25,000 hour expected bulb half-life
- 192 touch cells (16x12)
- 1/4" gasket and four DIN mounting clips for NEMA 1
- 2.3" (59.0mm) installed depth

NEMA 1, FDA compliant

- **Part No. EZ-S6M-FS**
- includes all serial drivers and accepts optional Ethernet cards
- **Part No. EZ-S6M-FSH**
- includes Data Highway Plus interface

OPER. INT.

