

# Enclosure Accessories



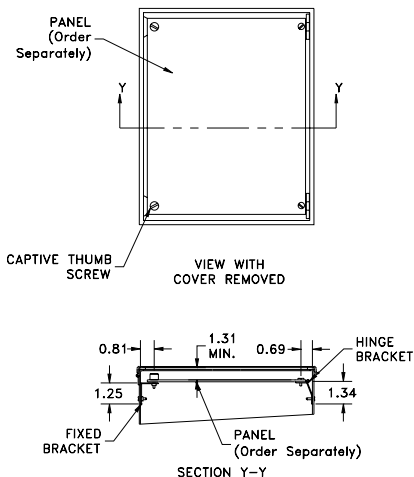
## JIC and NEMA swing-out panel kits

- Designed to allow mounting of switches, pilot lights and other components near the front of the enclosure for easy access or meter reading
- These kits consist of heavy-gauge brackets and hinges, which are easily installed by drilling small holes in the sides of the enclosure and bolting the bracket in place
- Sealed washers are also furnished to ensure that the enclosure will meet the original NEMA rating after installation.
- These kits are designed for use with standard Wiegmann JIC and NEMA panels. They do not work with N412xxxC Ultimate Enclosures.

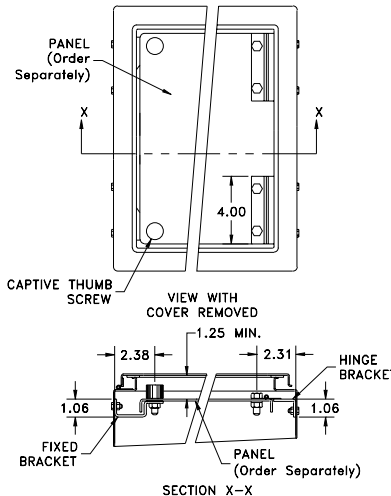
Part Number	Price	Description
<b>WAJCDFK</b>	<--->	JIC kit
<b>WANADFK</b>	<--->	NEMA kit

*Note: Panels must be ordered separately from enclosure.*

### WAJCDFK



### WANADFK



## Touch-up paint



Part Number: **WAGSE**

Price: <--->

ANSI-61 gray satin enamel in 12 oz. spray can. Use on existing enclosure and subpanel finishes.

## Mounting feet

Part Number: **N412MFK**

Price: <--->

Part Number: **N412MFKSS**

Price: <--->

- N412MFK contains four steel external mounting feet
- N412MFKSS contains four stainless steel external mounting feet
- Sealing washers are provided with each kit to maintain NEMA 4 or 12 rating after installation
- N412MFK has a plated finish



## Print pockets



Print Pockets		
Part Number	Price	Description
<b>WAPPL0606</b>	<--->	6"x6" plastic print pocket can be placed anywhere within enclosure using 2-way adhesive tape flanges. Color: white
<b>WAPPL0810</b>	<--->	8"x10" plastic print pocket can be placed anywhere within enclosure using 2-way adhesive tape flanges. Color: white

Enclosure Shipping Schedule		
Same day	1 - 7 days	1 -10 days
Color indicates shipping lead time in business days.		

# Enclosure Accessories



Enclosures for Electrical/Electronic Equipment



## Hole seals

Designed to seal extra pushbutton holes, conduit openings, and knockout openings from dirt, dust, oil and water. Has quick wing nut and oil-resistant gasket. Steel hole seals are finished with ANSI-61 gray polyester powder. Stainless steel hole seals have a grained finish.



## Casters

- Casters can be used on any enclosure to provide mobility
- Caster kit includes two swivel casters and two stationary casters, along with all necessary hardware
- Zinc-plated steel



## Panel supports

- Provide additional support for panels on which heavy instruments are mounted
- Adjustable so the weight of the panel is partially supported by the bottom of the enclosure
- White polyester powder finish

Enclosure Shipping Schedule		
Same day	1 - 7 days	1 - 10 days
Color indicates shipping lead time in business days.		

Part No: Steel Hole Seals	Price	Part No: Stainless Steel Hole Seals	Price	Description	Hole Diameter
WAS050	<--->	WAS050SS	<--->	1/2 inch conduit holes	0.87 (22)
WAS075	<--->	WAS075SS	<--->	3/4 inch conduit holes	1.14 (29)
WAS100	<--->	WAS100SS	<--->	1 inch conduit holes	1.38 (35)
WAS125	<--->	WAS125SS	<--->	1-1/4 inch conduit holes	1.61 (41)
WAS150	<--->	WAS150SS	<--->	1-1/2 inch conduit holes	2.00 (51)
WAS200	<--->	WAS200SS	<--->	2 inch conduit holes	2.52 (64)
WAS250	<--->	-	<--->	2-1/2 inch conduit holes	3.00 (76)
WAS300	<--->	-	<--->	3 inch conduit holes	3.62 (92)
WAS350	<--->	-	<--->	3-1/2 inch conduit holes	4.13 (105)
WAS400	<--->	-	<--->	4 inch conduit holes	4.64 (118)
WASPB	<--->	WASPBSS	<--->	Standard oil tight pushbutton holes	1.18 (30)
WASPBG	<--->	WASPBGSS	<--->	Miniature oil tight pushbutton holes	0.87 (22)

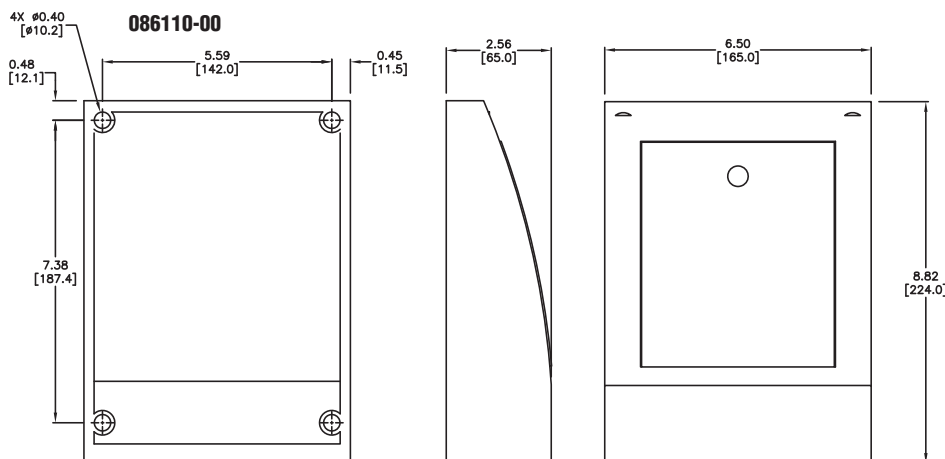
Note: Dimensions in inches (millimeters)

Caster Kit Part No.	Price	Description
WC10C	<--->	Set of 4 casters, 2 mounting plates and hardware for WC10 consoles
WC12C	<--->	Set of 4 casters, 2 mounting plates and hardware for WC12 consoles

Panel Support Part No.	Price	Description
WAPS03	<--->	Two panel supports for 1-door and 2-door enclosures where distance from bottom of panel to bottom of enclosure is less than 2-1/4 inches
WAPS09	<--->	Two panel supports for freestanding enclosures where distance from bottom of panel to bottom of enclosure is between 2-7/8 inches and 8-1/2 inches



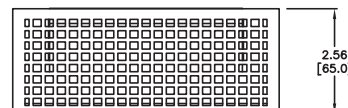
## Protective Cover



## Features

- Packaged multi-purpose protective cover
- Locking door
- Weather and UV resistant (UL 94-HB)
- IP 20 Protection Class

Filter Fan Cover		
Part Number	Description	Price
086110-00	Filter Fan Cover	<--->



Company Information

Terminal Blocks

Power Distribution Blocks

Wiring Accessories

ZIPLink Connection System

Multi-wire Connectors

Sensor Cables and Connectors

M12 Junction Blocks

Wiring Duct

Cable Ties

Wire

Flexible Cord

Multi-conductor Flex Cable

Data Cables

Wire Management Products

Circuit Protection

Enclosures

Enclosure Climate Control

Tools

Safety Products

Appendix Book 3

Terms and Conditions

# Enclosure Accessories - Adapter Plates, End Plates and Gasket Kits



## Operator Adapter Plates

- Used on all Wiegmann disconnect enclosures with universal flange cutouts
- An operator adapter plate is required to install a disconnect in all Wiegmann WA series enclosures with a universal cutout.
- Operator adapters include an adapter plate and additional parts used to interlock the master door with the disconnect operating mechanism. Panel drilling and installation instructions are furnished with each adapter.
- Each brand and type of disconnect requires a different operator adapter. It is important to select the proper operator adapter and enclosure for the disconnect that you have selected.



Operator Adapter Plates		
Operator Adapter Plates	Price	Type of Operator Adapter
<b>WA21ABA</b>	<--->	Allen-Bradley 1494F and 1494D
<b>WA21ABVA</b>	<--->	Allen-Bradley 1494V
<b>WA21CHVA</b>	<--->	Cutler-Hammer C361, C371 and C371 Flex Shaft™, AutomationDirect.com: F0S03C, F1S03/6C, F3S03C, F4S04C
<b>WA21FUFA</b>	<--->	Fuji Electric BW9F
<b>WA21GETDA</b>	<--->	General Electric STDA
<b>WA21ITE</b>	<--->	I-T-E Max-Flex™
<b>WA21SDA</b>	<--->	Square D Class 9422, (variable depth and cable mechanism)

## Blank Adapter Plates

- These adapter plates are used to cover flange cutouts in disconnect enclosures when disconnects are not installed. This greatly increases the versatility of the disconnect enclosures, enabling them to also be used as regular Type 12 enclosures.
- Wiegmann blank adapter plates are made from heavy gauge steel, with oil-resistant gasket to maintain the dust-tight and oil-tight qualities of the enclosure.
- All blank adapter plates are painted ANSI 61 gray polyester powder.
- All necessary mounting hardware and instructions are included.



Blank Adapter Plates		
Blank Adapter Plates	Price	Type of Operator Adapter
<b>WA21BAP</b>	<--->	Blank adapter for WA enclosures (hardware included)
<b>WA22BAP</b>	<--->	Blank adapter for ABN12 enclosures (hardware included)
<b>WA3456BAP</b>	<--->	Blank adapter for SDN12, SN4 and SSN4X enclosures (hardware included)

Enclosure Shipping Schedule			
Same day	1 - 7 days	1 - 10 days	15 days
Color indicates shipping lead time in business days.			

# Non-Metallic Enclosures Accessories

## Mounting foot kit for Premier Series

Part Number	Price	Description	Wt.
<b>HW-MGFTKIT</b>	<--->	Mounting Foot Kit for Premier Series	1 oz.



## Mounting Foot Kit for Slim Line and In-Line Series

Part Number	Price	Description	Wt.
<b>HW-N4XMTGFTKIT</b>	<--->	Mounting Foot Kit for Slim Line and In-Line Series of Non-Metallic Enclosures	1 oz.



## Drain Vent



Part Number	Price	Description	Wt.
<b>HW-DV</b>	<--->	Single Drain Vent	2 oz.
<b>HW-DVKIT</b>	<--->	Single Drain Vent, epoxy screws	2 oz.

## Hole Plugs



Part Number	Price	Description	Wt.
<b>HW-FGHP</b>	<--->	Non-metallic hole plug, for .5 to .75 inch conduit hole	2 oz.
<b>HW-FGHP-PB-075</b>	<--->	Non-metallic hole plug for .75 to 1.00 inch conduit hole	2 oz.
<b>HW-FGHP-100-125</b>	<--->	Non-metallic hole plug for 1.00 to 1.25 inch conduit hole	2 oz.
<b>HW-FGHP-150-200*</b>	<--->	Non-metallic hole plug for 1.50 to 2.00 inch conduit hole	2 oz.

*\*Note: Will maintain NEMA 4X rating.  
The hole plug diameter is the "conduit trade size dimension."  
(Example: .75" conduit hole size actual = 1.115").  
The hole plug gasket material is a closed cell neoprene.*

Enclosure Shipping Schedule		
Same day	1 - 7 days	1 - 14 days

Color indicates shipping lead time in business days.



Company Information

Terminal Blocks

Power Distribution Blocks

Wiring Accessories

ZIPLink Connection System

Multi-wire Connectors

Sensor Cables and Connectors

M12 Junction Blocks

Wiring Duct

Cable Ties

Wire

Flexible Cord

Multi-conductor Flex Cable

Data Cables

Wire Management Products

Circuit Protection

Enclosures

Enclosure Climate Control

Tools

Safety Products

Appendix Book 3

Terms and Conditions

# Enclosure Accessories - Electrical Interlocks, Defeaters and Grounding Kit



**WAEK115**



**WAEK115NDH**

## Electrical interlock

The WAEK115 is designed to be used with standard Wiegmann door latching mechanisms. When turned on, this interlock will prevent the door handle from being turned. This interlock is designed to fit handles in the following enclosures:

- All two-door NEMA 12 enclosures
- Freestanding NEMA 12 enclosures
- All consoles
- All single-door NEMA 12 enclosures which have three-point handle mechanisms
- Multi-door NEMA 12 enclosures

The WAEK115NDH is designed to be used with standard Wiegmann enclosures that have no handles. This interlock requires drilling several holes in the cover and the body for mounting.

Enclosure Shipping Schedule		
Same day	1 - 7 days	1 -10 days
Color indicates shipping lead time in business days.		

Part Number	Price	Description	Volts/Hz
<b>WAEK115</b>	<--->	Electrical Interlock	120/60
<b>WAEK115NDH</b>	<--->	Electrical Interlock	120/60

## Interlock def eater

This def eater is key-operated and enables personnel to enter an enclosure while the enclosure's internal components are energized. Turning the key disengages the circuit to the electrical interlock.

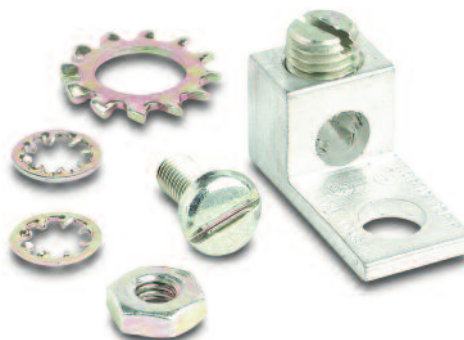


Part Number	Price	Description
<b>WAEKDF</b>	<--->	Interlock def eater

## Grounding kit

- Field Grounding Kit
- Includes necessary parts to properly ground enclosure

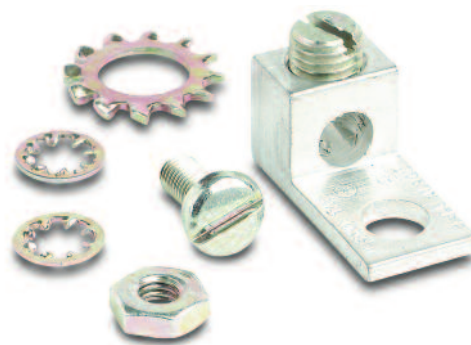
Grounding Kit		
Part Number	Description	Price
<b>WGNDKT</b>	Grounding Kit	<--->
Field grounding kit includes necessary parts to properly ground enclosure		



# WGNDKT Grounding Kit

## Grounding kit

This field grounding kit includes all necessary parts for properly grounding your enclosure.



Note: A WGNDKT must be ordered with each RSC enclosure to meet the CSA standard.  
No partial CSA orders accepted

Grounding Kit		
Part Number	Description	Price
<b>WGNDKT</b>	Grounding Kit	<-->
Field grounding kit includes necessary parts to properly ground enclosure.		

Company Information

Terminal Blocks

Power Distribution Blocks

Wiring Accessories

ZIPLink Connection System

Multi-wire Connectors

Sensor Cables and Connectors

M12 Junction Blocks

Wiring Duct

Cable Ties

Wire

Flexible Cord

Multi-conductor Flex Cable

Data Cables

Wire Management Products

Circuit Protection

Enclosures

Enclosure Climate Control

Tools

Safety Products

Appendix Book 3

Terms and Conditions

# Enclosure Accessories - Locks and Latches

## NEMA 1 type 1/4-latch



**N1C14T**

**N1C14TKL**

- Designed for field installation standard NEMA 1 type enclosures
- Requires only a quarter turn to open and close
- Available in both the 1/4-turn latch and 1/4-turn key lock

Latch Part Number	Price	Description
<b>N1C14T</b>	<--->	NEMA 1 1/4-turn latch
<b>N1C14TKL</b>	<--->	NEMA 1 1/4-turn key lock



**N41214TSS**

## Stainless steel lock kit for NEMA 412

- Designed for standard single-door type 412 enclosures
- Requires only a quarter turn to open and close
- Latch is water and dust tight
- Lock is stainless steel
- Can be used with N412 stainless steel enclosures

Lock Kit Part No.	Price	Description
<b>N41214TSS</b>	<--->	Stainless steel 1/4-turn; <b>one point</b>
<b>N41214TSS3</b>	<--->	Stainless steel 1/4-turn; <b>three point</b>

## NEMA 412 tamper-resistant latch kits and keys

- Designed for NEMA 412 type enclosures
- Latch kits are tamper resistant
- Available in both 1-point and 3-point 1/4-turn kits
- All have black matte or chrome finish



**N41214TTRI**

**N41214SQ**

**N41214TVP**

Tamper-Resistant Latches Part Numbers				Description
1-point	Price	3-point	Price	
<b>N41214TTRI</b>	<--->	<b>N41214TTRI3</b>	<--->	Triangular 1/4-turn keyed latch
<b>N41214SQ</b>	<--->	<b>N41214SQ3</b>	<--->	Square 1/4-turn keyed latch
<b>N41214TVP</b>	<--->	<b>N41214TVP3</b>	<--->	Double bit vibration proof 1/4-turn keyed latch



**N41214TTRIK**

**N41214SQK**

**N41214TVPK**

Tamper-Proof Keys Part Number	Price	Description
<b>N41214TTRIK</b>	<--->	Triangular key
<b>N41214SQK</b>	<--->	Square key
<b>N41214TVPK</b>	<--->	Double bit vibration proof key

Enclosure Shipping Schedule		
Same day	1 - 7 days	1 -10 days
Color indicates shipping lead time in business days.		

# Enclosure Accessories - Locks



Enclosures for Electrical/Electronic Equipment

## Lock kit for NEMA 4 and 12 enclosures

### NEMA 412 lock kits



**N41214T**



**N41214TB**



**WACLSN12**



**N41214TBKL**



**N41214TW**



**N41214TWPL**



**N41214TTH**

- Designed for field installation in standard single-door NEMA4 and 12 enclosures
- Latch is water-tight and dust-tight
- It is necessary to drill or punch one hole in the cover to receive the latch
- Complete installation instructions are included

Lock Kit for NEMA 12 Enclosures Part Number	Price	Description
<b>WACLSN12</b>	<--->	1- point key lock

- Designed for NEMA 412 type enclosures.
- All have black matte finish or chrome finish (see chart)
- Available in both 1-point and 3-point 1/4-turn latches

NEMA 412 Lock Kits Part Numbers				Description
1-point	Price	3-point	Price	
<b>N41214T</b>	<--->	<b>N41214T3</b>	<--->	Slotted chrome finish
<b>N41214TB</b>	<--->	<b>N41214TB3</b>	<--->	Slotted black matted finish
<b>N41214TW</b>	<--->	<b>N41214TW3</b>	<--->	Wing handle 1/4-turn latch
<b>N41214TWPL</b>	<--->	<b>N41214TWPL3</b>	<--->	Padlocking 1/4-turn
<b>N41214TTH</b>	<--->	<b>N41214TTH3</b>	<--->	1/4-turn black matted tee handle
<b>N41214TBKL *</b>	<--->	<b>Not Available</b>		1/4-turn black key lock/dust cover

\* NEMA 12 and 13 rating with dust cover only.

Enclosure Shipping Schedule		
Same day	1 - 7 days	1 -10 days

Color indicates shipping lead time in business days.

Company Information

Terminal Blocks

Power Distribution Blocks

Wiring Accessories

ZIPLink Connection System

Multi-wire Connectors

Sensor Cables and Connectors

M12 Junction Blocks

Wiring Duct

Cable Ties

Wire

Flexible Cord

Multi-conductor Flex Cable

Data Cables

Wire Management Products

Circuit Protection

Enclosures

Enclosure Climate Control

Tools

Safety Products

Appendix Book 3

Terms and Conditions



# Enclosure Accessories - Locks and Latches



## Lock kits for junction boxes

- Designed for field installation in standard junction boxes. Latch is water-tight and dust-tight
- It is necessary to drill or punch one hole in the cover to receive the cylinder lock
- Complete installation instructions included
- Designed for field installation in standard single-door JIC, BCH, BN4CH enclosures



WACLJIC

WAPLKJIC

## Latch kits for single-door type 12 enclosures

- Designed for field installation in standard single door Type 3R, 4 and 12 enclosures
- Latch is water-tight and dust-tight
- It is necessary to drill or punch one hole in the cover to receive the latch
- Complete installation instructions are included



Padlock



Keylock

## NEMA 1 type T handle latch and cylinder lock kits

- The "T" handles are intended to be used on various NEMA 1 cabinets. Not suitable for water-tight applications
- The 3-point latch comes with handle, latch, latch rods and all hardware. Handles are chrome plated
- Cylinder locks are designed for field installation in the small N1C and large N1C enclosures. Latch is water and dust-tight. Must drill a hole in the door to receive the latch
- Latch has chrome-plated finish



WAL8



WAL12B



WA8



WAL12AR

Junction Box Lock Kits Part Numbers	Price	Description
WACLJIC	<-->	1-point cylinder key lock
WAPLKJIC	<-->	Padlock lock kit

Latch Kits for Single Door Type 12				Description
Padlock Style	Price	Keylock Style	Price	
WAL1A	<-->	WAL2A	<-->	1-point latch kit
WAL1B	<-->	WAL2B	<-->	3-point latch kit where H (height) is 16", 20", 24" or 30"
WAL1C	<-->	WAL2C	<-->	3-point latch kit where H (height) is 36", 42" or 48"
WAL1D	<-->	WAL2D	<-->	3-point latch kit where H (height) is 60" or 72"

Handle Latch and Cylinder Lock Kits	Price	Description
WAL8	<-->	1-point "T" locking handle
WA8	<-->	1-point "T" non locking handle
WAL12B	<-->	1-point key lock for small N1C enclosures
WAL12AR	<-->	3-point key lock for large N1C enclosures

Enclosure Shipping Schedule		
Same day	1 - 7 days	1 - 10 days
Color indicates shipping lead time in business days.		

# Enclosure Accessories - Electrical Interlocks, Defeaters and Grounding Kit



- Company Information
- Terminal Blocks
- Power Distribution Blocks
- Wiring Accessories
- ZIPLink Connection System
- Multi-wire Connectors
- Sensor Cables and Connectors
- M12 Junction Blocks
- Wiring Duct
- Cable Ties
- Wire
- Flexible Cord
- Multi-conductor Flex Cable
- Data Cables
- Wire Management Products
- Circuit Protection
- Enclosures
- Enclosure Climate Control
- Tools
- Safety Products
- Appendix Book 3
- Terms and Conditions



**WAEK115**



**WAEK115NDH**

## Electrical interlock

The WAEK115 is designed to be used with standard Wiegmann door latching mechanisms. When turned on, this interlock will prevent the door handle from being turned. This interlock is designed to fit handles in the following enclosures:

- All two-door NEMA 12 enclosures
- Freestanding NEMA 12 enclosures
- All consoles
- All single-door NEMA 12 enclosures which have three-point handle mechanisms
- Multi-door NEMA 12 enclosures

The WAEK115NDH is designed to be used with standard Wiegmann enclosures that have no handles. This interlock requires drilling several holes in the cover and the body for mounting.

Enclosure Shipping Schedule		
Same day	1 - 7 days	1 -10 days
Color indicates shipping lead time in business days.		

Part Number	Price	Description	Volts/Hz
<b>WAEK115</b>	<--->	Electrical Interlock	120/60
<b>WAEK115NDH</b>	<--->	Electrical Interlock	120/60

## Interlock defeater

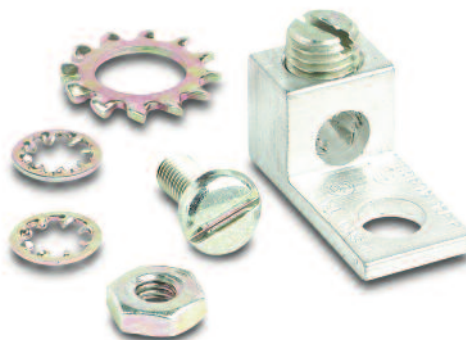
This defeater is key-operated and enables personnel to enter an enclosure while the enclosure's internal components are energized. Turning the key disengages the circuit to the electrical interlock.



Part Number	Price	Description
<b>WAEKDF</b>	<--->	Interlock defeater

## Grounding kit

- Field Grounding Kit
- Includes necessary parts to properly ground enclosure



Grounding Kit		
Part Number	Description	Price
<b>WGNDKT</b>	Grounding Kit	<--->
Field grounding kit includes necessary parts to properly ground enclosure		

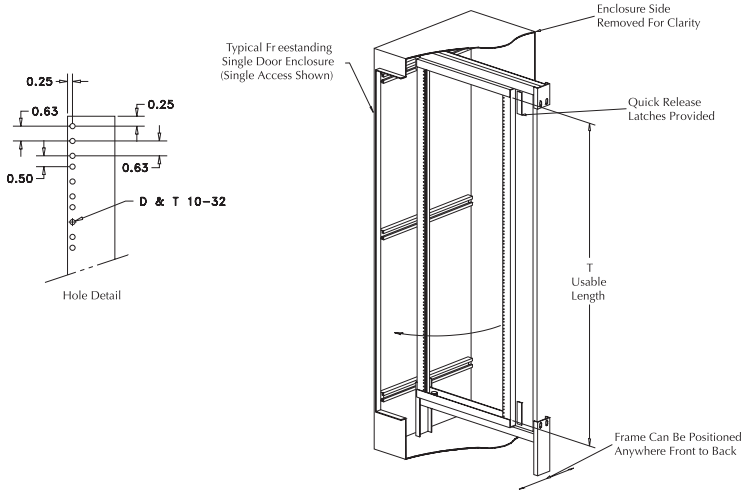
# WA-SOF Series Accessory Swing-Out Racks For Freestanding Enclosures

Enclosure Shipping Schedule		
Same day	1 - 7 days	1 -10 days
Color indicates shipping lead time in business days.		

## Description

Fabricated from 10-gauge steel, these swing-out rack mounting frames are available for mounting rack mounting equipment. Mounting holes are tapped with #10-32 threads spaced per E.I.A. standard.

Panels are painted with a white polyester powder



Frame P/N	Price	Rack Size	Fits Enclosure HxW	Usable Angle Length "T"
<b>WA7230SOF19</b>	<--->	19 (483)	72x30 (1829x762)	57.88 (1470)
<b>WA7236SOF19</b>	<--->	19 (483)	72x36 (1829x914)	57.88 (1470)
<b>WA9036SOF19</b>	<--->	19 (483)	90x36 (2286x914)	75.38 (1915)

Note: Dimensions in inches (millimeters) Note: If used in a two-door enclosure, a center panel support must be ordered.

## Accessory center panel supports for freestanding enclosures

CENTER PANEL SUPPORTS		
Part Number	Price	Description
<b>WA60FSCPS</b>	<--->	Center panel support for 60" high enclosures. Allows two single-wide sub-panels (including swing-out panels and rack mount frames) to be mounted in a two door enclosure.
<b>WA72FSCPS</b>	<--->	Center panel support for 72" high enclosures. Allows two single-wide sub-panels (including swing-out panels and rack mount frames) to be mounted in a two door enclosure.
<b>WA90FSCPS</b>	<--->	Center panel support for 90" high enclosures. Allows two single-wide sub-panels (including swing-out panels and rack mount frames) to be mounted in a two door enclosure.

Clamp Nuts		
Part Number	Price	Description
<b>WAPS1420CN</b>	<--->	Clamp nut for unistrut; 1/4" x 20 UNC
<b>WAPS3816CN</b>	<--->	Clamp nut for unistrut; 3/8" x 16 UNC