

# Enclosure Accessories - Locks and Latches



## NEMA 412 Ultimate Series Tamper-Resistant Latch Kits and Keys



**N41214TTRI**



**N41214SQ**



**N41214TVP**



**N41214TTRIK**



**N41214SQK**



**N41214TVPK**

Enclosure Shipping Schedule	
Same day	1 - 7 days
Color indicates shipping lead time in business days.	

Tamper-Resistant Latches						Tamper-Proof Keys					
1-point	Price	Wt. [lb]	3-point	Price	Wt. [lb]	Description	Latch Key	Price	Wt. [lb]	Description	
<b>N41214TTRI</b>	\$31.00	0.2	<b>N41214TTRI3</b>	\$126.00	2.2	Hubbell-Wiegmann enclosure latch, 1/4 turn, triangular. For use on NEMA 412 Ultimate series enclosures. N41214TTRIK key required, purchased separately.	<b>N41214TTRIK</b>	\$17.50	0.1	Hubbell-Wiegmann enclosure latch key, triangular. For use on N41214TTRI, N41214TTRI3 latches.	
<b>N41214SQ</b>	\$31.00	0.2	<b>N41214SQ3</b>	\$126.00	2.2	Hubbell-Wiegmann enclosure latch, 1/4 turn, square. For use on NEMA 412 Ultimate series enclosures. N41214TSQK key required, purchased separately.	<b>N41214SQK</b>	\$17.50	0.1	Hubbell-Wiegmann enclosure latch key, square. For use on N41214SQ, N41214SQ3 latches.	
<b>N41214TVP</b>	\$40.50	0.2	<b>N41214TVP3</b>	\$67.00	2.5	Hubbell-Wiegmann enclosure latch, 1/4 turn, vibration proof. For use on NEMA 412 Ultimate series enclosures. N41214TVPK key required, purchased separately.	<b>N41214TVPK</b>	\$17.50	0.1	Hubbell-Wiegmann enclosure latch key, double bit vibration proof. For use on N41214TVP, N41214TVP3 latches.	

## Enclosures

The latches and keys on this page are used with the following enclosure series:

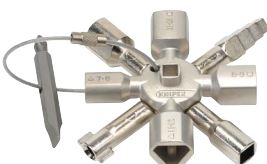
- BN4\_CHQT\*
- BN4\_CHQTSS\*
- BN4\_CHQTSSA\*
- CTSD\*
- RHC "Medium"\*
- N412\_C
- N412\_CLG
- N412\_WC
- N412\_WCLG
- N412\_CST
- N412\_SSC
- N412\_SSAC
- N412\_WSSC
- N412\_CSSST
- N1C
- N1C\_LP

\*Must use cam from stock latch

## Enclosure series example:

Enclosure part number **N412121206C** = **N412\_C** series.

## Optional Single-Door Latch Kit Tools



**001101**

Pliers Sets and Accessories				
Part Number	Description	Weight	Pcs/Pkg	Price
<b>001101</b>	Twin universal control cabinet key. Two 4-way wheel wrenches connected in a space-saving way with magnets. Includes lock profiles: square (5-6, 7-8, 9-10, 11mm), triangular (7, 8-9, 10-11, 12mm), double-bit (3-5mm), half-moon (6mm), stepped square (6-9mm), reversing bit (slot 1x7mm, cross-recess PH2). Die-cast zinc material.	0.31 lb [140 g]	1	\$42.50

# Enclosure Accessories - Locks and Latches

## NEMA 412 Ultimate Series Lock Kits



**N41214T**



**N41214TB**



**N41214TSS**



**N41214TW**



**N41214TWPL**



**N41214TTH**

### Enclosure Shipping Schedule

Same day	1 - 7 days
----------	------------

Color indicates shipping lead time in business days.

NEMA 412 Lock Kits						
1-point	Price	Wt. [lb]	3-point	Price	Wt. [lb]	Description
<b>N41214T</b>	\$31.00	0.2	<b>N41214T3</b>	\$45.50	2.5	Hubbell-Wiegmann enclosure latch, slotted, 1/4 turn. For use on NEMA 412 Ultimate series enclosures.
<b>N41214TB</b>	\$31.00	0.1	<b>N41214TB3</b>	\$126.00	2.5	Hubbell-Wiegmann enclosure latch, slotted, 1/4 turn, black finish. For use on NEMA 412 Ultimate series enclosures.
<b>N41214TW</b>	\$38.50	0.2	<b>N41214TW3</b>	\$89.00	2.2	Hubbell-Wiegmann enclosure latch, wing handle, 1/4 turn. For use on NEMA 412 Ultimate series enclosures.
<b>N41214TWPL</b>	\$38.50	0.3	<b>N41214TWPL3</b>	\$126.00	2.4	Hubbell-Wiegmann enclosure latch, padlocking, 1/4 turn. For use on NEMA 412 Ultimate series enclosures.
<b>N41214TTH</b>	\$68.00	0.3	<b>N41214TTH3</b>	\$99.00	2.3	Hubbell-Wiegmann enclosure latch, tee handle, 1/4 turn, black finish. For use on NEMA 412 Ultimate series enclosures.
<b>N41214TTHKL</b>	\$82.00	0.4	<b>N41214TTH3KL</b>	\$125.00	2.4	Hubbell-Wiegmann enclosure lock kit, 1/4 turn, key locking, black matte finish. For use on NEMA 412 Ultimate series enclosures.
<b>N41214TBKL *</b>	\$68.00	0.2	<b>Not Available</b>	—	—	Hubbell-Wiegmann enclosure latch, black key and dust cover, 1/4 turn. For use on NEMA 412 Ultimate series enclosures.
<b>N41214TSS</b>	\$48.00	0.2	—	—	—	Hubbell-Wiegmann enclosure latch, 304 stainless steel, 1/4 turn. For use on NEMA 412 Ultimate series stainless steel enclosures with one-point latch. No key required
<b>N41214TSS3</b>	\$153.00	2.2	—	—	—	Hubbell-Wiegmann enclosure latch, 304 stainless steel, 1/4 turn. For use on NEMA 412 Ultimate series stainless steel enclosures with 3-point latch. No key required.

\*NEMA 12 and 13 rating with dust cover only.

## Enclosures

The latches and keys on this page are used with the following enclosure series:

- BN4\_CHQT\*
- BN4\_CHQTSS\*
- BN4\_CHQTSSA\*
- CTSD\*
- RHC "Medium"\*
- N412\_C
- N412\_CLG
- N412\_WC
- N412\_WCLG
- N412\_CST
- N412\_SSC
- N412\_SSAC
- N412\_WSSC
- N412\_CSSST
- N1C
- N1C\_LP

\*Must use cam from stock latch

## Enclosure series example:

Enclosure part number **N412121206C** = **N412\_C** series.

# Enclosure Accessories - Locks and Latches



## NEMA 1 1/4-Turn Latch



Enclosure Shipping Schedule	
Same day	1 - 7 days
Color indicates shipping lead time in business days.	

Latch	Price	Description	Weight [lb]
<b>N1C14T</b>	\$31.50	Hubbell-Wiegmann enclosure latch, 1/4 turn, plated steel. For use on NEMA 1 enclosures. No key required.	0.2
<b>N1C14TKL</b>	\$39.50	Hubbell-Wiegmann enclosure latch, 1/4 turn key lock, plated steel and plastic construction. For use on NEMA 1 enclosures. Includes key.	0.2

## Enclosures

The latches and keys on this page are used with the following enclosure series:

- N1C
- N1C\_LP
- RHC “Medium”\*
- CTSD

*\*Must use cam from stock latch*

## Enclosure series example:

Enclosure part number **N1C201606LP** = **N1C\_LP** series.

# Enclosure Accessories - Locks and Latches



## NEMA 1 "T" Handle Latches



**WAL8**



**WA8**

Enclosure Shipping Schedule	
1 - 7 days	1 -10 days
Color indicates shipping lead time in business days.	

"T" Handle Latch and Cylinder Lock Kits			
Part Number	Price	Description	Weight [lb]
<b>WAL8</b>	\$51.50	Hubbell-Wiegmann enclosure latch kit, tee handle, keylock, 1-point, chrome-plated finish. For use on single-door NEMA 1 enclosures. Includes key.	0.7
<b>WA8</b>	\$37.50	Hubbell-Wiegmann enclosure latch kit, tee handle, non-locking, 1-point, chrome-plated finish. For use on single-door NEMA 1 enclosures.	0.7
<b>WAL8KEY</b>	\$6.50	Hubbell-Wiegmann enclosure key, replacement, for WAL8 series locks	0.1

## Enclosures

The latches and keys on this page are used with the following enclosure series:

- CTDD
- WA\_WF

## Enclosure series example:

Enclosure part number **WA364812WF** = **WA\_WF** series.

# Enclosure Accessories - Locks and Latches



Latch Kits for Single-Door  
NEMA 3R, NEMA 4, and  
NEMA 12 Enclosures



**WAL1A**



**WAL2A**

Latch Kits for Single Door NEMA 3R and NEMA 12 Enclosures						
Padlock Style	Price	Weight [lb]	Keylock Style	Price	Weight [lb]	Description
<b>WAL1A</b>	\$88.00	1.7	<b>WAL2A</b>	\$43.50	0.9	Hubbell-Wiegmann enclosure latch kit, 1-point. For use on single-door NEMA 12 enclosures.
<b>WAL1B</b>	\$117.00	2.8	<b>WAL2B</b>	\$85.00	2.0	Hubbell-Wiegmann enclosure latch kit, 3-point. For use on NEMA 12 enclosures where height is 16, 20, 24 or 30 inches.
<b>WAL1C</b>	\$134.00	3.8	<b>WAL2C</b>	\$102.00	2.8	Hubbell-Wiegmann enclosure latch kit, 3-point. For use on NEMA 12 enclosures where height is 36, 42 or 48 inches.
<b>WAL1D</b>	\$135.00	4.8	<b>WAL2D</b>	\$104.00	4.0	Hubbell-Wiegmann enclosure latch kit, 3-point. For use on NEMA 12 enclosures where height is 60 or 72 inches.
-	-	-	<b>WAL2KEY</b>	\$6.50	0.1	Hubbell-Wiegmann enclosure key, replacement, for WAL2A, WAL2B, WAL2C, WAL2D locks.

Enclosure Shipping Schedule		
Same day	1 - 7 days	1 -10 days
Color indicates shipping lead time in business days.		

## Enclosures

The locks and lock kits on this page are used with the following enclosure series:

- CTDD
- WA\_WF

## Enclosure series example:

Enclosure part number **WA364812WF** = **WA\_WF** series.

# Enclosure Accessories - Locks and Latches



## Latch Kits for Stainless Steel Single-Door NEMA 4 and NEMA 4X Enclosures



**WAL3A**



**WAL4A**



**WAL3ASS**

Enclosure Shipping Schedule
1 - 10 days
Color indicates shipping lead time in business days.

Latch Kits for Single Door NEMA 4 and NEMA 4X Enclosures									
Padlock Style	Price	Weight [lb]	Stainless Steel Padlock Style	Price	Weight [lb]	Combo Key/ Padlock Style	Price	Weight [lb]	Description
<b>WAL3A</b>	\$58.00	2.7	<b>WAL3ASS</b>	\$117.00	2.7	<b>WAL4A</b>	\$58.00	2.6	Hubbell-Wiegmann enclosure latch kit, 1-point, black matte finish. For use on single-door NEMA 4 / 4X enclosures.
<b>WAL3B</b>	\$66.00	3.8	<b>WAL3BSS</b>	\$117.00	3.8	<b>WAL4B</b>	\$66.00	3.4	Hubbell-Wiegmann enclosure latch kit, 3-point, black matte finish. For use on NEMA 4 / 4X enclosures where height is 16, 20, 24 or 30 inches.
<b>WAL3C</b>	\$66.00	4.6	<b>WAL3CSS</b>	\$117.00	4.5	<b>WAL4C</b>	\$66.00	4.3	Hubbell-Wiegmann enclosure latch kit, 3-point, black matte finish. For use on NEMA 4 / 4X enclosures where height is 36, 42 or 48 inches.
<b>WAL3D</b>	\$66.00	5.4	<b>WAL3DSS</b>	\$117.00	5.8	<b>WAL4D</b>	\$66.00	5.4	Hubbell-Wiegmann enclosure latch kit, 3-point, black matte finish. For use on NEMA 4 / 4X enclosures where height is 60 to 90 inches.
-						<b>WAEMKA4</b>	\$6.50	0.1	Hubbell-Wiegmann enclosure key, replacement, for WAL4 series combination key / padlock handles.

### WAL Latch Kits

These latch kits are used with the following enclosure series:

- WA\_FS
- WA\_FSD
- WA\_FSDA
- WA\_FSDAD
- WA\_E
- N4D\_3PT
- WA\_FSN43PT
- WRD\_FS4
- WRD\_FSD4
- N12 "Floor Mount"
- N412\_1PTC
- N412\_3PTC

### WAL\_SS Latch Kits

These latch kits are used with the following enclosure series:

- N412\_SS1PTC
- N412\_SSA1PTC
- N412\_SS3PTC
- N412\_SSA3PTC
- SSN4\_WF3PT
- SSN4\_3PT
- SSN4\_3PTA
- SSN4\_3PTW
- SSN4D\_3PT
- SSN4D\_3PTA
- WA\_SSF43PTC
- WA\_SSFSDN43PT
- WA\_FSSS
- WA\_FSDSS

### Enclosure series example:

Enclosure part number N4122416083PTC = N412\_3PTC series.

# Enclosure Accessories - Locks and Latches



## Lock Kit for NEMA 4 and NEMA 12 Enclosures

This kit is designed for use as an add-on to enclosures sold without locks. Lock and key are sold separately.



**WACLSN12**

## Lock Kits for Junction Boxes

These locks kits with keys are designed for use with junction boxes that are sold without locks.



**WACLJIC**



**WAPLKJIC**

Lock Kit for NEMA 4 and NEMA 12 Enclosures			
Part Number	Price	Description	Weight [lb]
<b>WACLSN12</b>	\$31.50	Hubbell-Wiegmann enclosure latch with key, 1-point, plated steel. For use on NEMA 4 and NEMA 12 enclosures.	0.3
<b>WACLSN12KEY</b>	\$6.50	Hubbell-Wiegmann replacement enclosure key, for WACLSN12 lock	0.1

Junction Box Lock Kits			
Part Number	Price	Description	Weight [lb]
<b>WACLJIC</b>	\$31.50	Hubbell-Wiegmann junction box lock kit, 1-point, cylinder key. For use on single-door JIC, BxxxxCH, BN4xxxxCH series enclosures. Includes key.	0.3
<b>WAPLKJIC</b>	\$19.00	Hubbell-Wiegmann junction box padlock kit, plated steel. For use on single-door JIC, BxxxxCH, BN4xxxxCH series enclosures. Includes mounting hardware. Padlock not included.	0.1

Enclosure Shipping Schedule		
Same day	1 - 7 days	1 -10 days
Color indicates shipping lead time in business days.		

# Enclosure Accessories - Locks and Latches



## Replacement Clamp Assemblies



**WABN4JIC**



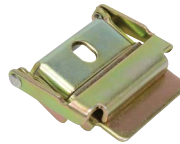
**WAN12RA**



**WAN4XRA**

## Fast Operating Junction Box Clamps

Provides quick access to enclosure or wireway interiors. Install on standard clamp bracket used on Hubbell-Wiegmann junction boxes, NEMA 12 troughs, and lay-in wireway.



**WAL23**



**WAL23SS**



**WAL23SSA**

Replacement Clamp Assemblies	Price	Description	Weight [lb]
<b>WABN4JIC</b>	\$17.50	Hubbell-Wiegmann enclosure clamp assembly, replacement, 304 stainless steel. For use on NEMA 4 JIC enclosures. Includes clamp and screw.	0.1
<b>WAN12RA</b>	\$17.00	Hubbell-Wiegmann enclosure clamp assembly, replacement, plated steel. For use on NEMA 12 enclosures. Includes clamp, screw, spring and (2) washers.	0.10.5
<b>WAN4XRA</b>	\$25.00	Hubbell-Wiegmann enclosure clamp assembly, replacement, 304 stainless steel. For use on NEMA 4X enclosures. Includes clamp, screw, spring and (2) washers.	0.1

Fast Operating Junction Box Clamps	Price	Description	Weight [lb]
<b>WAL23</b>	\$25.50	Plated steel clamp	0.3
<b>WAL23SS</b>	\$31.00	304 stainless steel	0.2
<b>WAL23SSA</b>	\$40.00	316 stainless steel	0.2

Enclosure Shipping Schedule	
1 - 7 days	1 -10 days
Color indicates shipping lead time in business days.	