

Exhaust Grille and Filter Accessories



Part Number	Price	Filter Density (G/M2)	Mass Filter Level %	Required Cutout Dimensions
WPFA10BK	<--->	150	67%	3.62x3.62 (92x92)
WPFA20BK	<--->	350	83%	4.92x4.92 (125x125)
WPFA25-30BK	<--->	350	83%	8.78x8.78 (223x223)
WPFA50-60BK	<--->	350	83%	11.46x11.46 (291x291)

Dimensions in inches (millimeters)

Exhaust grille

Features

- Polycarbonate fire retardant plastic grilles, UL94-VO
- Durable, reusable filter mat included

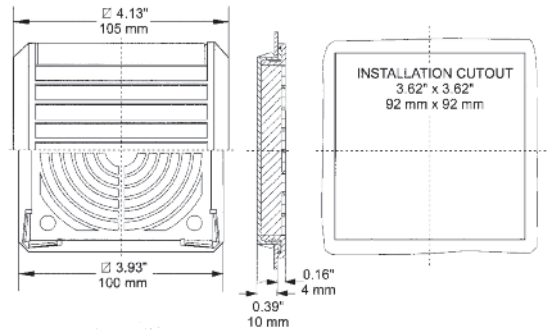
Standards

- NEMA 1 (NEMA 12 with optional WPF Series gasket)
- IP43 (IP54 with optional WPF Series gasket)

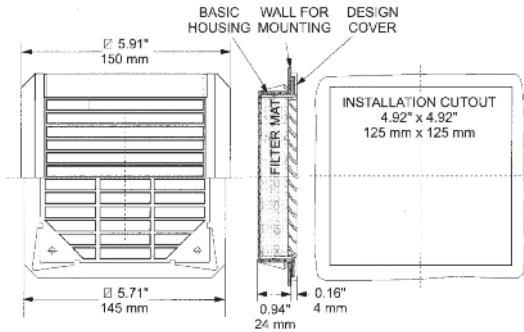
Accessories

- Gaskets (WPF Series) recommended if installing on enclosure with textured finish

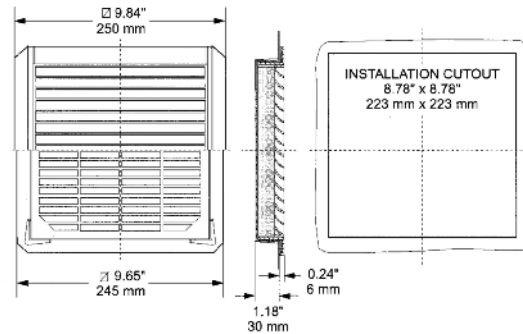
WPFA10BK



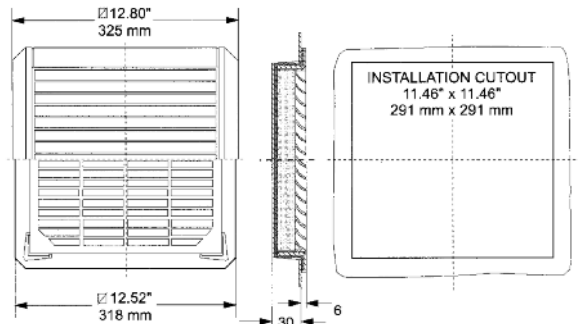
WPFA20BK



WPFA25-30BK



WPFA50-60BK



Exhaust Grille and Filter Accessories



Rubber gaskets for filter fans and exhaust grilles

Features

- Packaged individually
- Provide added sealing protection between enclosure and fan housing
- Recommended when fans or exhaust grilles are installed on enclosures with textured finishes

Standards

- Changes filterfan rating (WPF series) from NEMA 1 to NEMA 12 when installed

Replacement filter mats

Applications

- Replacement filter mats for WPF series filterfans and WPFA series exhaust grilles

Features

- Made of washable synthetic fibers
- Reusable up to 20 times
- 100% resistant to humidity



Replacement Filter Mats							
Part Number	Price	Use With This Filterfan Kit Part Number	Price	Use With This Exhaust Grille and Filter Part Number	Price	Mass Filter Lever %	Dimensions HxW
WPFM10	<--->	WPF10-115BK	<--->	WPFA10BK	<--->	67	3.40x3.40 (85x85)
WPFM20	<--->	WPF20-115BK	<--->	WPFA20BK	<--->	83	4.50x4.50 (115x115)
WPFM25-30	<--->	WPF25-115BK	<--->	WPFA25-30BK	<--->	83	8.30x8.30 (210x210)
		WPF30-115BK	<--->				
WPFM50-60	<--->	WPF50-115BK	<--->	WPFA50-60BK	<--->	83	11x11 (280x280)
		WPF60-115BK	<--->				

Rubber Gaskets					
Part Number	Price	Use With Filterfan Kit Part Number	Price	Use With Exhaust Grille Part Number	Price
WPFG10	<--->	WPF10-115BK	<--->	WPFA10BK	<--->
WPFG20	<--->	WPF20-115BK	<--->	WPFA20BK	<--->
WPFG25-30	<--->	WPF25-115BK	<--->	WPFA25-30BK	<--->
		WPF30-115BK	<--->		
WPFG50-60	<--->	WPF50-115BK	<--->	WPFA50-60BK	<--->
		WPF60-115BK	<--->		

Enclosure Shipping Schedule		
Same day	1 - 7 days	1 -10 days
Color indicates shipping lead time in business days.		



Exhaust Grilles With Filters

118000-00



Features

- No-screw installation
- Mounting depth 0.6 in. (16mm)

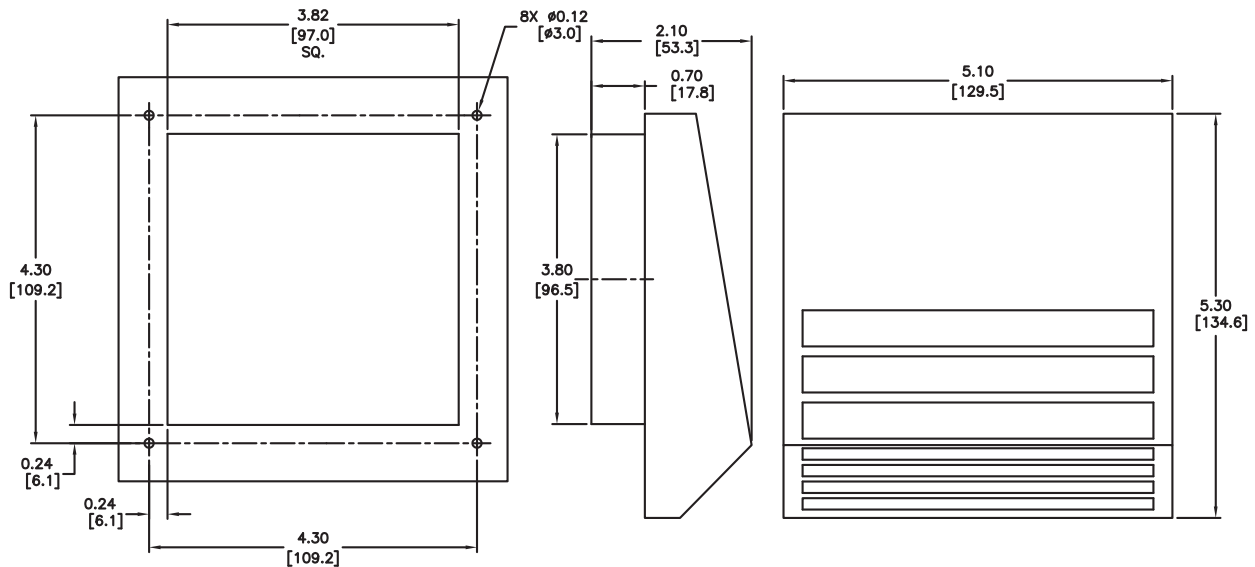
Accessories

- Come with gaskets attached (adhesive-sided to stick on panel)

Part Number	Price	Filter Density (g/m ²)	Mass Filter Level %
Exhaust Grilles			
118000-00	<--->	350	94%
118010-00	<--->		
118020-00	<--->		
118030-00	<--->		
Outdoor Exhaust Grilles			
118210-00	<--->	360	98%
<small>Dimensions in inches (millimeters)</small>			

Dimensions [in mm]

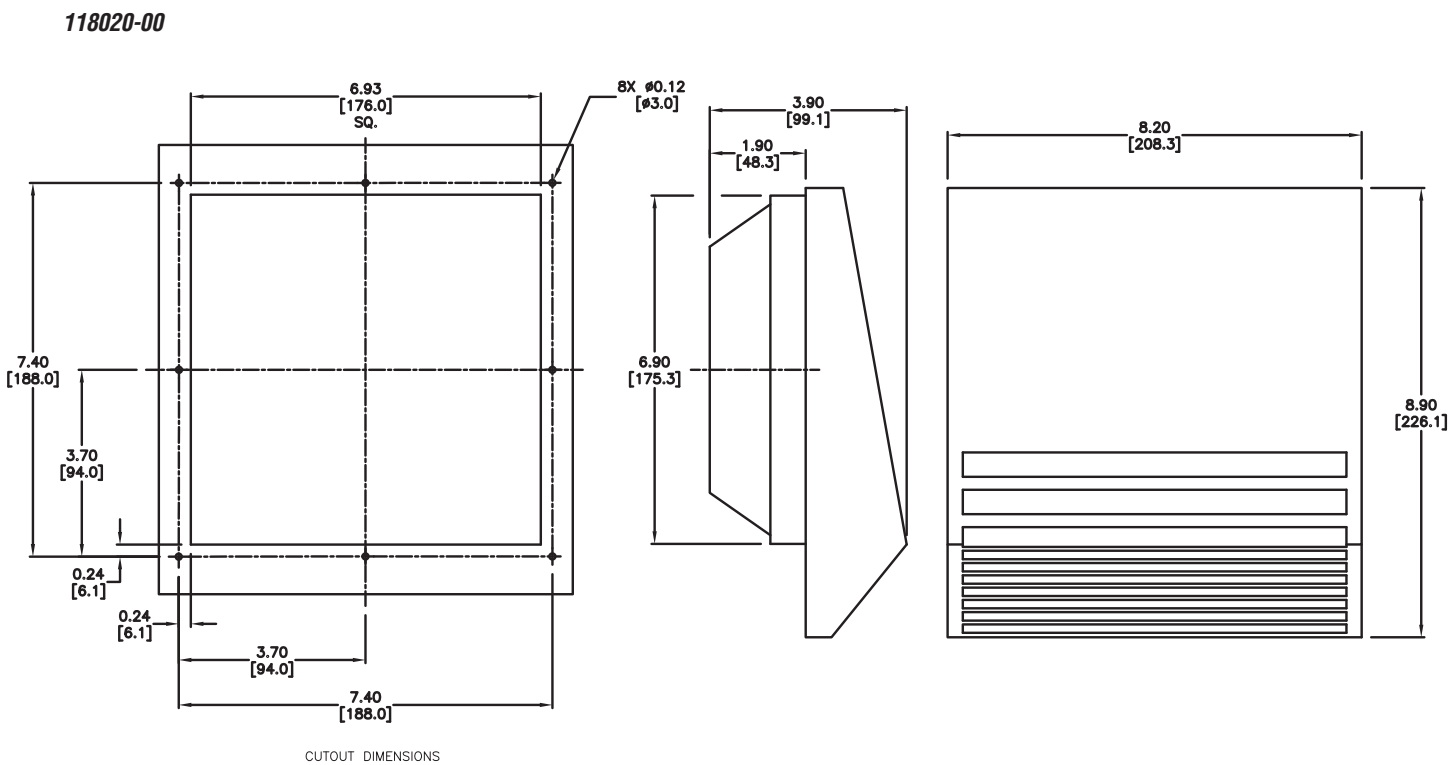
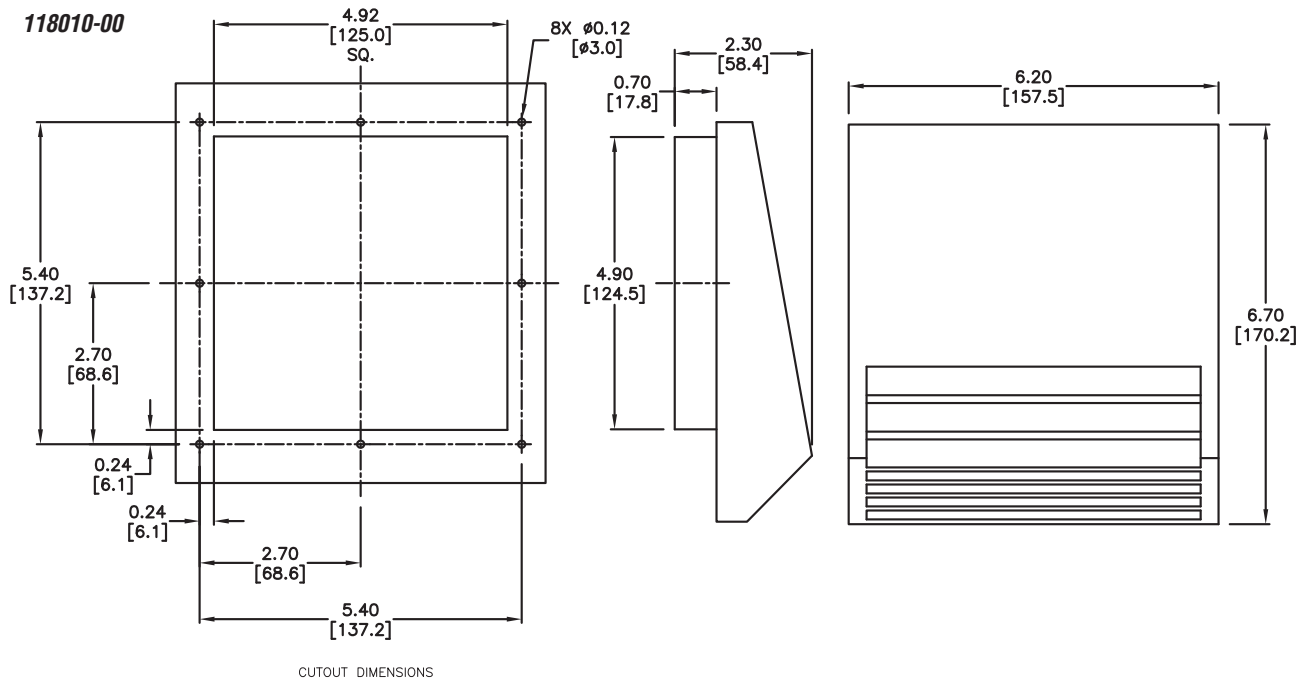
118000-00



CUTOUT DIMENSIONS



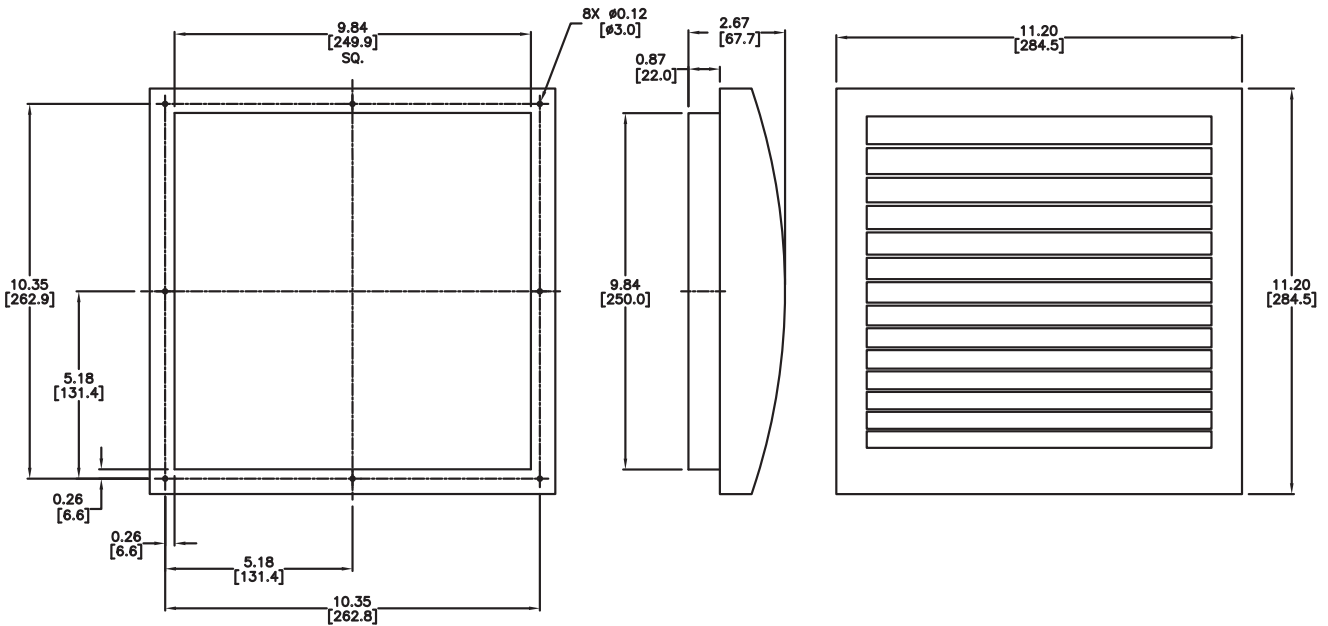
Exhaust Grille and Filter Accessories





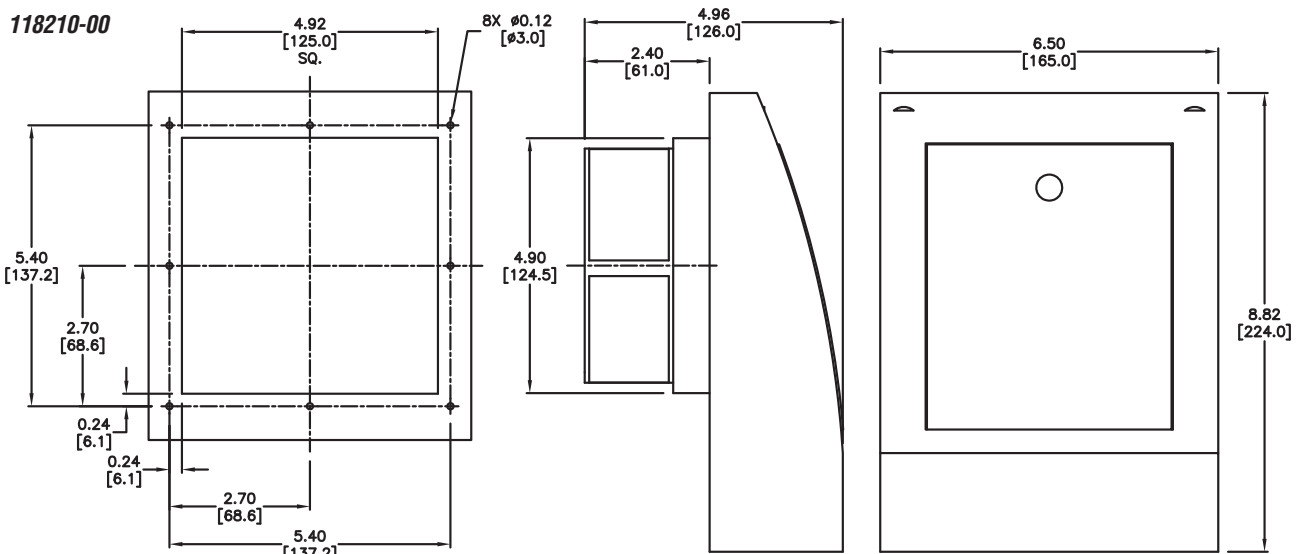
Exhaust Grille and Filter Accessories

118030-00

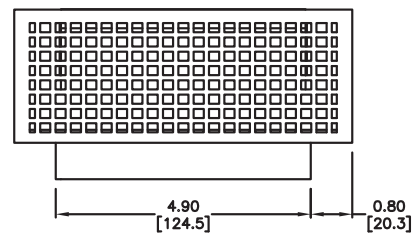


CUTOUT DIMENSIONS

118210-00



CUTOUT DIMENSIONS



Replacement Filter Elements

086000-00



Applications

- Replacement filter mats for Stego series filter fans and Stego series exhaust grilles

Features

- Filter media for enclosure fans
- Fine or medium density
- Fits 3.82 x 3.82, 4.92 x 4.92, 6.93 x 6.93, or 9.84 x 9.84 inch filter fans
- Package of 3

Replacement Filter Elements							
Part Number	Pieces per Package	Use With Filter Fan Kit Part Number	Use With Exhaust Grille and Filter Part Number	Filter Rating	Filter Density g/m ²	Mass Filter Level %	Dimensions HxW in (mm)
086000-00	3	018000-01 018000-02	118000-00	G4 (Med.)	350	94	3.5 x 3.5 (88.90x88.90)
086010-00		018010-01 018010-02	118010-00				4.6 x 4.6 (116.84x116.84)
086020-00		018020-01 018020-02 018040-01	118020-00				6.6 x 6.6 (167.64x167.64)
086080-00		018030-01 018030-03 018050-01	118030-00				9.7 x 9.7 (246.38x246.38)
086030-00		018000-01 018000-02	118000-00	F5 (Fine)	360	98	3.5 x 3.5 (88.90x88.90)
086040-00		018010-01 018010-02 018210-02 018210-04	118010-00				4.6 x 4.6 (116.84x116.84)
086050-00		018020-01 018020-02 018040-01	118020-00				6.6 x 6.6 (167.64x167.64)
086090-00		018030-01 018030-03 018050-01	118030-00				9.7x9.7 (246.38x246.38mm)

Air Volume and Pressure Data						
Part Number	Filter Mat Air Volume (cfm)				Filter Mat Static Pressure (Pa)	
	G4 filter free flow*	G4 filter with exhaust filter**	F5 filter free flow*	F5 filter with exhaust filter**	G4 filter free flow*	F5 filter free flow*
018000-02	12	9	4	3	19	37
018000-01	14	11	5	4	18	35
018010-02	32	25	16	13	32	53
018010-01	37	28	19	15	30	50
018020-02	60	40	31	21	23	30
018020-01	69	46	36	24	27	35
018040-01	136	84	58	36	60	100
018030-03	176	135	47	36	23	46
018030-01	202	156	54	42	27	54
018050-01	373	203	145	83	85	140
018210-04	30	n/a	12	n/a	48	74
018210-02	35	n/a	14	n/a	35	54

*Fan with filter and louver

**Fan with filter, louver, exhaust filter, and grille.