

Enclosure Accessories



JIC and NEMA swing-out panel kits

- Designed to allow mounting of switches, pilot lights and other components near the front of the enclosure for easy access or meter reading
- These kits consist of heavy-gauge brackets and hinges, which are easily installed by drilling small holes in the sides of the enclosure and bolting the bracket in place
- Sealed washers are also furnished to ensure that the enclosure will meet the original NEMA rating after installation.
- These kits are designed for use with standard Wiegmann JIC and NEMA panels. They do not work with N412xxx Ultimate Enclosures.

Part Number	Price	Description
WAJCDFK	<--->	JIC kit
WANADFK	<--->	NEMA kit

Note: Panels must be ordered separately from enclosure.

Touch-up paint



Part Number: **WAGSE**

Price: <--->

ANSI-61 gray satin enamel in 12 oz. spray can. Use on existing enclosure and subpanel finishes.

Mounting feet

Part Number: **N412MFK**

Price: <--->

Part Number: **N412MFKSS**

Price: <--->

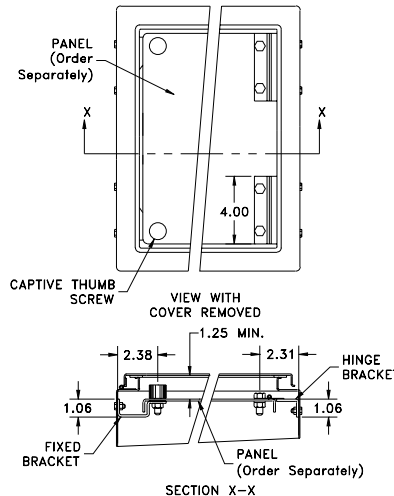
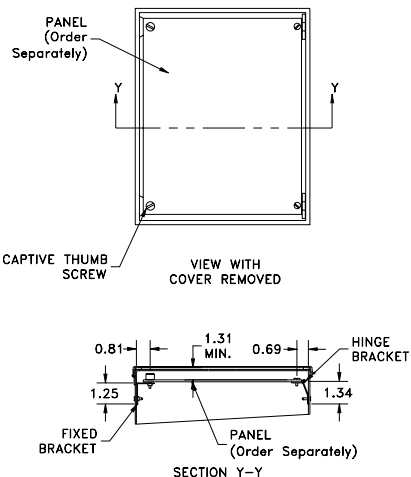
- N412MFK contains four steel external mounting feet
- N412MFKSS contains four stainless steel external mounting feet
- Sealing washers are provided with each kit to maintain NEMA 4 or 12 rating after installation
- N412MFK has a plated finish



WAJCDFK



WANADFK



Print pockets



Print Pockets		
Part Number	Price	Description
WAPPL0606	<--->	6"x6" plastic print pocket can be placed anywhere within enclosure using 2-way adhesive tape flanges. Color: white
WAPPL0810	<--->	8"x10" plastic print pocket can be placed anywhere within enclosure using 2-way adhesive tape flanges. Color: white

Enclosure Shipping Schedule

Same day	1 - 7 days	1 -10 days
----------	------------	------------

Color indicates shipping lead time in business days.

Enclosure Accessories



Hole seals

Designed to seal extra pushbutton holes, conduit openings, and knockout openings from dirt, dust, oil and water. Has quick wing nut and oil-resistant gasket. Steel hole seals are finished with ANSI-61 gray polyester powder. Stainless steel hole seals have a grained finish.



Casters

- Casters can be used on any enclosure to provide mobility
- Caster kit includes two swivel casters and two stationary casters, along with all necessary hardware
- Zinc-plated steel



Panel supports

- Provide additional support for panels on which heavy instruments are mounted
- Adjustable so the weight of the panel is partially supported by the bottom of the enclosure
- White polyester powder finish

Part No: Steel Hole Seals	Price	Part No: Stainless Steel Hole Seals	Price	Description	Hole Diameter
WAS050	<--->	WAS050SS	<--->	1/2 inch conduit holes	0.87 (22)
WAS075	<--->	WAS075SS	<--->	3/4 inch conduit holes	1.14 (29)
WAS100	<--->	WAS100SS	<--->	1 inch conduit holes	1.38 (35)
WAS125	<--->	WAS125SS	<--->	1-1/4 inch conduit holes	1.61 (41)
WAS150	<--->	WAS150SS	<--->	1-1/2 inch conduit holes	2.00 (51)
WAS200	<--->	WAS200SS	<--->	2 inch conduit holes	2.52 (64)
WAS250	<--->	-		2-1/2 inch conduit holes	3.00 (76)
WAS300	<--->	-		3 inch conduit holes	3.62 (92)
WAS350	<--->	-		3-1/2 inch conduit holes	4.13 (105)
WAS400	<--->	-		4 inch conduit holes	4.64 (118)
WASPB	<--->	WASPBSS	<--->	Standard oil tight pushbutton holes	1.18 (30)
WASPBG	<--->	WASPBGSS	<--->	Miniature oil tight pushbutton holes	0.87 (22)

Note: Dimensions in inches (millimeters)

Caster Kit Part No.	Price	Description
WC10C	<--->	Set of 4 casters, 2 mounting plates and hardware for WC10 consoles
WC12C	<--->	Set of 4 casters, 2 mounting plates and hardware for WC12 consoles

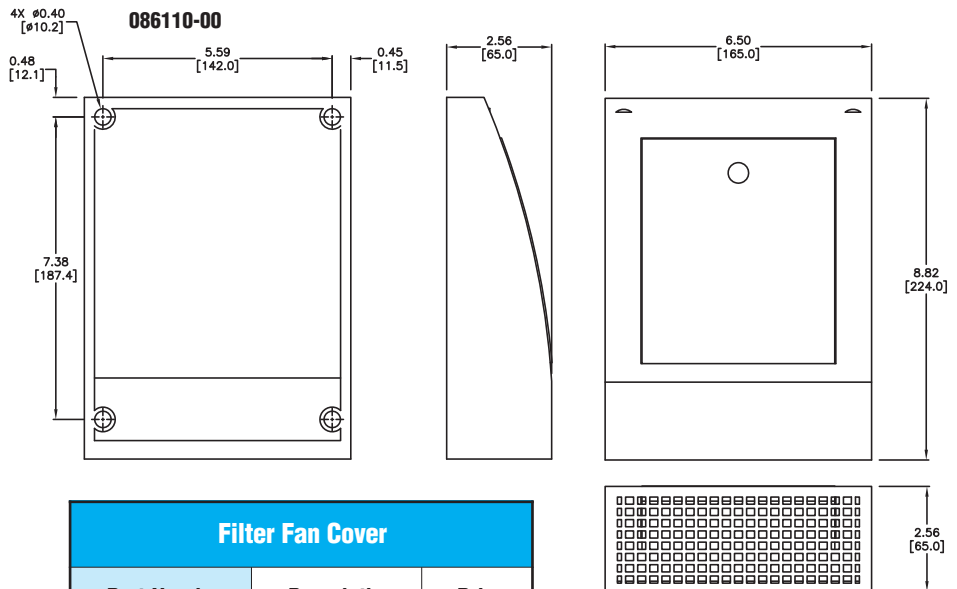
Panel Support Part No.	Price	Description
WAPS03	<--->	Two panel supports for 1-door and 2-door enclosures where distance from bottom of panel to bottom of enclosure is less than 2-1/4 inches
WAPS09	<--->	Two panel supports for freestanding enclosures where distance from bottom of panel to bottom of enclosure is between 2-7/8 inches and 8-1/2 inches

Enclosure Shipping Schedule		
Same day	1 - 7 days	1 - 10 days

Color indicates shipping lead time in business days.



Protective Cover



Features

- Packaged multi-purpose protective cover
- Locking door
- Weather and UV resistant (UL 94-HB)
- IP 20 Protection Class

Filter Fan Cover		
Part Number	Description	Price
086110-00	Filter Fan Cover	<--->