



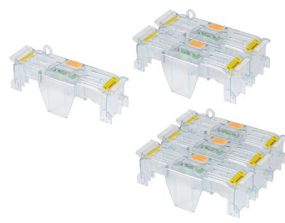
# Modular Power Distribution Multi-Wire Fuse Blocks for Class J Fuses

## Features

- Combination power distribution block and fuse block reduces wire connections and total panel components, using 50% less panel space and reducing installation time and labor by 33%.
- A 200kA withstand rating helps achieve a higher assembly short circuit current rating (SCCR) for compliance with NEC\* sections 110.10, 409.110(4), 409.22, 440.4(B), 670.3(A)(4) and 670.5.
- Optional see-through cover enhances safety with IP20 finger-safe protection, lockout/tagout capability and open circuit indication.



**Class J  
Power Distribution Blocks**



**Covers for Class J  
Power Distribution Blocks**

## Specifications

### Materials:

Base – thermoplastic

Box lug terminals – tin-plated aluminum

**SCCR:** 200kA

### Flammability rating:

Blocks – UL 94V0, self-extinguishing

Covers – UL 94HB, self-extinguishing

### Operating and storage temp range:

Blocks – -40° to 120°C [-40° to 248°F]

Covers – indicating -20° to 90°C [-4° to 194°F]

non-indicating -40° to 120°C [-40° to 248°F]

### Wire:

Cu/Al – 75°C [167°F]\*

\* Conductors with higher temperature rating may be used, but at their 75°C ampacity.

## Agency Approvals

- Blocks - UL - UR recognized E14853 – IZLT2
- CSA - Certified 47235 – 6225-01
- Covers - UL - Listed UL E58836 – JDVS
- CE, RoHS, Reach Compliant

*To obtain the most current agency approval information, see the Agency Approval Checklist section on the specific part number's web page.*

JM Series Modular Power Distribution Multi-Wire Fuse Blocks											
Part Number (1 pc/pkg)	Volts	Amps	Poles	Lineside		Loadside		Wt. lb [kg]	Covers***		Pcs/ Pkg
				Wire range (AWG)	Torque N·m [lb·in]	Wire range (AWG)	Torque N·m [lb·in]		w/o Indication	w/ Indication	
JM60100-1MW14-1 \$27.50	100		1	(1) 14 - 1/0 Cu/Al	1-1/0; 5.6 [50] 6-4; 5.0 [45] 8; 4.5 [40] 14-10; 4.0 [35]	(4) 14-4 Cu, 8-4 Al	6-4; 4.0 [35] 8; 2.8 [25] 14-10; 2.3 [20]† (2) 14-10; 3.4 [30]†	0.32 [0.15]	CVR-J-60100-M-1 \$6.50	CVRI-J-60100-M-1 \$11.50	1
JM60100-1MW14-2 \$53.00			2					0.64 [0.3]	CVR-J-60100-M-2 \$13.00	CVRI-J-60100-M-2 \$23.00	2
JM60100-1MW14-3 \$79.50			3					0.96 [0.45]	CVR-J-60100-M-3 \$19.50	CVRI-J-60100-M-3 \$34.00	3
JM60200-1MW16-1 \$104.50	600		1	(1) 6 - 250MCM Cu/Al	1 - 250MCM; 42 [375] (2) 6-2; 31 [275]	(6) 14-4 Cu, 8-4 Al	6-4; 4.0 [35] 8; 2.8 [25] 14-10; 2.3 [20]† (2) 14-10; 3.4 [30]†	0.84 [0.39]	CVR-J-60200-M-1 \$8.00	CVRI-J-60200-M-1 \$13.00	1
JM60200-1MW16-2 \$201.00			2					1.68 [0.78]	CVR-J-60200-M-2 \$16.50	CVRI-J-60200-M-2 \$26.50	2
JM60200-1MW16-3 \$301.50			3					2.52 [1.17]	CVR-J-60200-M-3 \$24.50	CVRI-J-60200-M-3 \$39.50	3
JM60400-1MW16-1 \$184.50	400		1	(1) 4 - 600MCM Cu/Al	4 - 600MCM; 57 [500] 500MCM; 51 [450] (2) 4-3/0; 57 [500] Cu 34 [300] Al	(6) 14-2 Cu, 8-2 Al	3-2; 5.6 [50] 6-4; 5.0 [45] 8; 4.5 [40] (2) 8; 4.5 [40]†† 14-10; 4.0 [35]† (2) 14-10; 4.5 [40]†	2.24 [1.02]	CVR-J-60400-M-1 \$14.50	CVRI-J-60400-M-1 \$20.50	1
JM60400-1MW16-3 \$532.00			3					6.72 [3.06]	CVR-J-60400-M-3 \$43.00	CVRI-J-60400-M-3 \$61.00	3
JM60400-1MW26-1* \$231.50			1					2.44 [1.1]	CVR-J-60400-M-1 \$14.50	CVRI-J-60400-M-1 \$20.50	1
JM60400-1MW26-3* \$666.00		3	7.32 [3.3]	CVR-J-60400-M-3 \$43.00	CVRI-J-60400-M-3 \$61.00	3					

\* Lineside dual box lug

\*\* Dual wire rated lugs with same wire size

\*\*\* Covers sold separately. Blown fuse indication requires 90V minimum and closed circuit to operate.

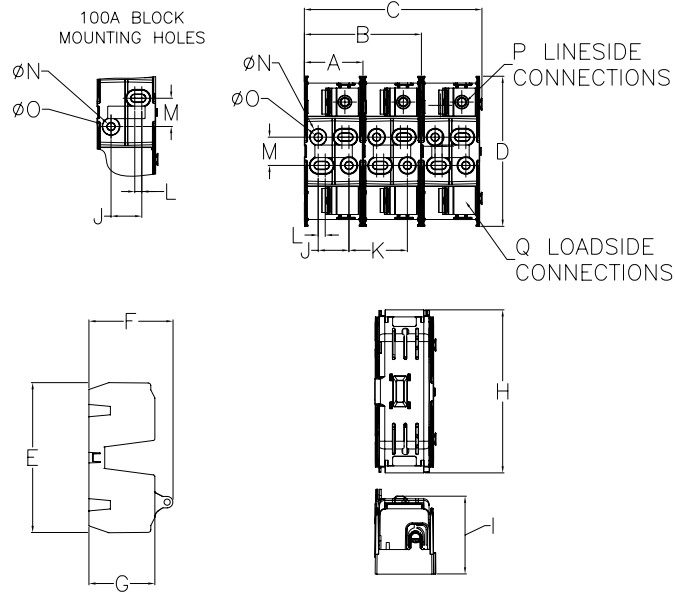
† Copper conductor only.

†† Dual wire not for CSA installations

# Power Distribution Blocks for Class J Fuses



## Dimensions



Dimensions																	Connections	
Block Size		A	B	C	D	E	F	G	H	I	J	K	L	M	$\phi N$	$\phi O$	Lineside (P)	Loadside (Q)
100A	in	2.0	4.0	6.0	5.5	5.5	2.8	2.2	6.0	2.8	0.9	2.0	0.4	1.1	0.4	0.5	1	4
	mm	51	102	153	139	139	72	55	152	72	22	51	10	29	9	13		
200A	in	2.6	5.3	8.0	6.8	6.8	3.8	3.0	7.3	3.8	1.4	2.6	0.3	1.3	0.4	0.7	1	6
	mm	67	134	203	172	172	97	75	186	97	35	34	8	32	9	19		
400A	in	3.5	7.0	10.6	8.0	8.0	4.8	4.1	8.7	4.8	2.0	3.5	0.3	1.6	0.4	0.7	2 (1)*	6
	mm	88	177	268	202	202	121	105	220	121	50	88	8	41	9	19		

\*JM60400-1MW16-X

Please see our website [www.AutomationDirect.com](http://www.AutomationDirect.com) for complete engineering drawings. Dimensions are approximate. Not for construction purposes.