

EDCC Current Limiting Class CC Fuses



EDCC Current Limiting Class CC Fuses				
Part Number	AMP Rating	Pcs/Pkg	Package Weight	Price
EDCC-5	0.5	10	0.2 lb	\$160.00
EDCC1	1			\$156.00
EDCC1-5	1.5			\$172.00
EDCC2	2			\$156.00
EDCC2-5	2.5			\$160.00
EDCC3	3			\$156.00
EDCC3-5	3.5			\$156.00
EDCC4	4			\$156.00
EDCC5	5			\$156.00
EDCC5-6	5.6			\$166.00
EDCC6	6			\$166.00
EDCC7	7			\$166.00
EDCC8	8			\$166.00
EDCC9	9			\$166.00
EDCC10	10			\$156.00
EDCC12	12			\$166.00
EDCC15	15			\$156.00
EDCC20	20			\$157.00
EDCC25	25			\$166.00
EDCC30	30			\$156.00

Features

- Branch circuit rated for 600 VAC
- Time-delay for motor branch circuit protection
- Excellent current-limiting performance
- Upgrade for standard "midget" fuses

Applications

- Use for protection of small horsepower motor circuits or other circuits requiring small dimension, time-delay fuses
- Can provide Type "2" coordinated protection for IEC or NEMA starters/contactors
- For control transformer applications, refer to HCTR fuses



EDCC Specifications

Time-Delay

Voltage Rating: EDCC
600 VAC; 300 VDC (0.5–2.25A, 20–30A)

Ampere Rating: 0.5–30 Amps

Interrupting Rating:
200,000 RMS Symmetrical Amps
20,000 Amps DC

Current Limiting: Class CC Fuse

UL Listed DC Ratings (per 198L)

Agency Approvals

- UL Listed, Class CC, Guide JDDZ, File E162363
- CSA Certified HRCI-MISC per C22.2, No. 248.4
- CE Compliant

Current-Limiting Effects EDCC (600V) Fuse Rating						
Let-Thru Current (Apparent RMS Symmetrical) Versus Fuse Ratings						
Prospective Short-Circuit Current*	1.25A	2.8A	15A	20A	25A	30A
1000	100	135	240	305	380	435
3000	140	210	350	440	575	580
5000	165	255	420	570	690	710
10,000	210	340	540	700	870	1,000
20,000	260	435	680	870	1,090	1,305
30,000	290	525	800	1,030	1,300	1,520
40,000	315	610	870	1,150	1,390	1,700
50,000	340	650	915	1,215	1,520	1,820
60,000	350	735	1,050	1,300	1,650	1,980
80,000	390	785	1,130	1,500	1,780	2,180
100,000	420	830	1,210	1,600	2,000	2,400
200,000	525	1,100	1,600	2,000	2,520	3,050

Note: RMS Symmetrical Amperes

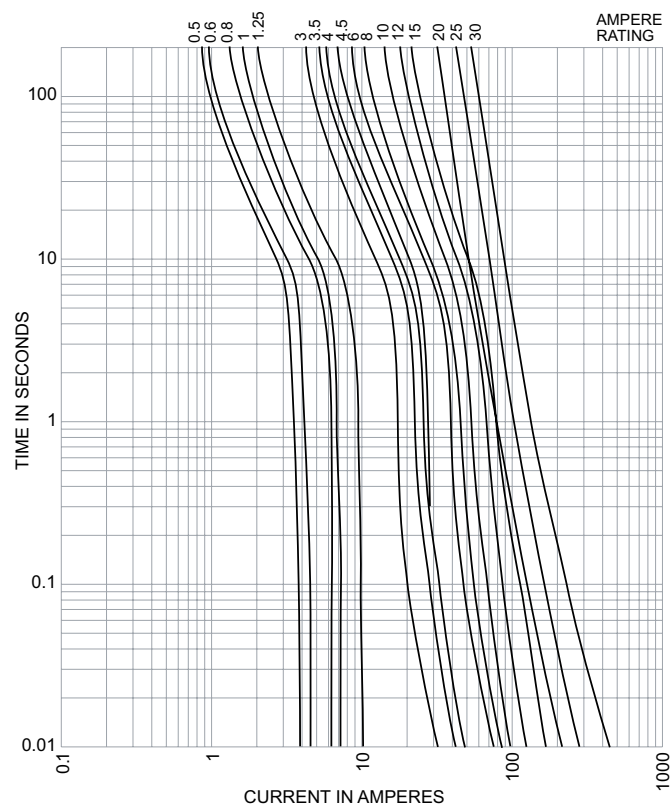
Short-circuit Current

$I_{peak} = I_{RMS} \times 2.3$

DIMENSIONS		
Amps	Ferrule (in)	Length (in)
0.5 - 30	13/32	1-1/2

CROSS REFERENCE			
EDISON	BUSSMANN	GOULD	LITTELFUSE
EDCC	LP-CC	ATDR	CCMR

Characteristic Curves



*RMS Symmetrical Amperes Short-Circuit Current.

NOTE: To calculate I_o (peak) multiply IRMS value x 2.3.



Selection Guide

Line Overview

The Edison family of fuses, fuse blocks and fuse holders is divided into two classes:

1. Current Limiting: Class CC, Class J, Class L, Class RK, Class T
2. General Purpose: Class M Midget and Small Dimension

The fuse selection guide below is a general summary of the

specifications included for each fuse type. This selection guide does not include the many variables that can exist for specific situations such as local codes, unusual temperature, or other operating conditions. When selecting fuses, be sure to comply with any applicable PUBLIC SAFETY standards that apply to Overcurrent Protection Devices (OPD).

Edison Fuses Selection Guide and General Specifications												
Description	Current Limiting											
	Class J		Class RK5		Class RK1		Class T		Class L	Class CC		
Fuse Type	Fast-Acting	Time-Delay	Time-Delay				Extremely Fast-Acting		Fast-Acting	Fast-Acting	Time-Delay	
Part Number	JHL	JDL	ECNR	ECSR	LENRK	LESRK	TJN	TJS	LCU	HCLR	HCTR	EDCC
Voltage Rating	600VAC 450VDC	600VAC 300VDC*	250VAC 125 VDC* (1-200A) 250VDC* (201-600A)	600VAC 300VDC*	250VAC 125 VDC* (10-60A) 250VDC* (70-600A)	600VAC 300VDC*	300VAC 160 VDC (15-600A)	600VAC	600V	600VAC 300VDC (15-20A)	600VAC	600VAC 300VDC (0.5-2.25A) (20-30A)
Amp Rating	1 - 600		1 - 600	3 - 600	10 - 600	5 - 600	1 - 600		601 - 1200	0.5 - 30	0.25 - 30	0.5 - 30
Interrupting Rating	200,000 RMS Symmetrical Amps											
Current Limiting	Class J		Class RK5		Class RK1		Class T		Class L	Class CC		
Agency Approvals	UL Listed Class J Guide JDDZ File E162363 CSA Certified HRCI-J per C22.2, No. 248.8 File 700489 RoHS compliant	UL Listed Class J Guide JDDZ File E162363 CSA Certified HRCI-J per C22.2, No. 248.8 File 700489	UL Listed, Class RK, Guide JDDZ, File E162363 CSA Certified HRCI-R per C22.2, No. 248.12, File 700489 (LENRK CSA File 053787)				UL Listed, Class T, Guide JDDZ, File E162363 CSA Certified HRCI-T per C22.2, No. 248.12, File 53787, Class 1422-02 & 1422-82		UL Listed, Std. 248-10 CSA Certified, HRC-L C22.2 No. 248.10, Class 1422- 02, File 53787	UL Listed to 248.4, Class CC, Guide JDDZ, File E162363, CSA certified HRCI-MISC per C22.2 No. 248.4, File 700489		
Dimensions	See product specification pages.									ferrule (in): 13/32, length (in): 1-1/2		

* Self-certified DC ratings

Edison Fuses Selection Guide and General Specifications												
Description	General Purpose – Midget				General Purpose – Small Dimension Electronic							
Fuse Type	Fast-Acting		Time-Delay		Fast-Acting Ceramic	Fast-Acting Glass		Medium Time-Delay Glass	Time-Delay Ceramic	Time-Delay Glass	Fast-Acting Glass	Time-Delay Glass
Part Number	MCL	MOL	MEQ	MEN	ABC	AGC	GMA	GMC	MDA	MDL	S500	S506
Voltage Rating	600 VAC	250 VAC	500 VAC	250 VAC	250 VAC (0.5 to 30A) 125VDC: (0.5 to 30A)	250VAC: (0.1 to 10A) 32VAC: (15 to 30A)	250VAC (0.063 - 3A) 125VAC (4 - 15A)	250VAC (0.5 - 3A) 125VAC (4 - 10A)	250VAC 125VDC (20A)	250VAC: (0.0625 to 8A) 32VAC: (10 to 20A)	250VAC	250VAC
Amp Rating	0.5 to 50	0.5 to 30	0.25 to 30	0.5 to 30	0.5 to 30	0.10 to 30	0.063 to 15	0.5 to 10	0.5 to 20	0.0625 to 20	0.032 to 10	0.25 to 6.3
Interrupting Rating	100,000 RMS Amps	10,000 RMS Amps			See specifications table on product pages							
Current Limiting	N/A				N/A							
Agency Approvals	UL Listed to 248.14, File E162443 CSA Cert. C22.2 Part 59.2, LR 700489				UL Listed standard 248-14 UL Listed Guide and File nos. (ABC 0.25-20 A): (AGC 1/100-10 A) JDYX and E19180 UL Recognition Guide and File nos. (ABC 20-30A): (AGC 11-30) JDYX2 and E19180 CSA Certification Record No: 053787 C 000 and Class No: 1422 01 and 1422 30		Designed to UL/CSA 248-14 UL Listed, Guide JDYX, File E19180 63mA-6A UL Recognition, Guide JDYX2, File E19180, 7A-15A CSA Certified, File 053787 C_000, 63mA-6A Class 1422-01		UL Listed standard 248-14 UL Listed Card: MDA 2/10-20A , MDL 1/16-8A (Guide JDYX, File E19180 UL Recognized Card: MDA 25-30A MDL 9-30A (Guide JDYX2, File E19180) CSA Certification Card: MDA 2/10-15A (Class No. 1422-01)		UL Recognized Guide JDYX2, File E19180 Semko Approval VDE Approval BSI Approval IMQ Approval RoHS compliant	
					RoHS							
Dimensions	ferrule (in): 13/32 length (in): 1-1/2				1/4" x 1-1/4", (6.3mm x 32mm)		0.197" x 0.788" (5mm x 20mm)		1/4" x 1-1/4", (6.3mm x 32mm)		0.197" x 0.788" (5mm x 20mm)	

Modular Ferrule Fuse Blocks for Midget Class and CC Fuses



Description

- BCM Series for use with Class CC fuses EDCC, HCTR and HCLR
- BMM Series for use with Midget Class Midget fuses MCL, MEQ, MEN & MOL

Mounting

35mm DIN rail or panel mount

Specifications

Materials:

Base – Thermoplastic

Terminals – Tin-plated bimetallic copper

Covers – Thermoplastic

Screws and pressure plates – Zinc-plated steel

SCCR: 200kA

Flammability rating:

Blocks – UL 94V0, self-extinguishing

Covers – UL 94HB, self-extinguishing

Operating and storage temp range:

Blocks – -40° to 120°C [-40° to 248°F]

Covers – indicating -20° to 90°C [-4° to 194°F]

– non-indicating -40° to 120°C [-40° to 248°F]

Wire:

Cu – 75°/90°C [167°/194°F]

Ring or Fork terminal to fit a #10-32 screw

Agency Approvals

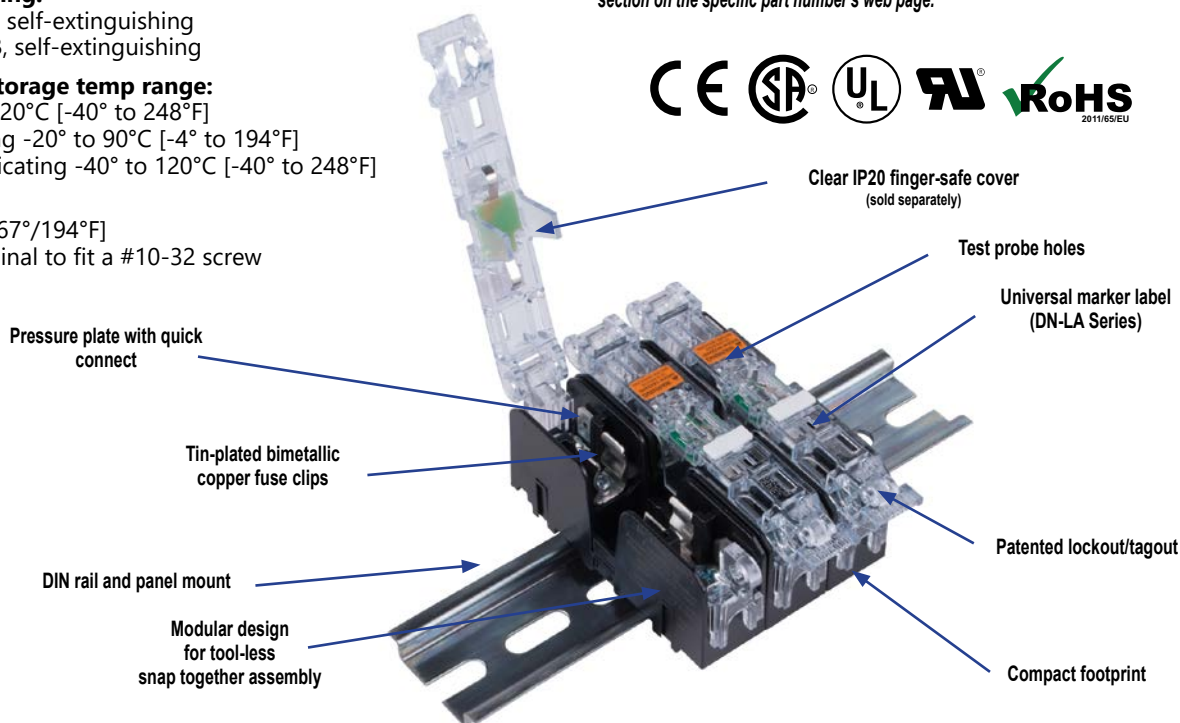
Fuse Blocks

- BCM – UL® Listed E14853 - IZLT
- BMM and BCCM UL Recognized E14853-IZLT2
- CSA® Certified 47235-6225-01
- CE
- RoHS Compliant
- Conflict mineral free
- REACH Compliant

Covers

- Covers are included in the overall UL Listing/Recognition and CSA Certification
- IP20 finger-safe
- RoHS compliant
- REACH Compliant

To obtain the most current agency approval information, see the Agency Approval Checklist section on the specific part number's web page.



Pressure Plate (with Quick Connect**) Modular Ferrule Fuse Blocks for Midget Class and CC Fuses													
Class	Part Number	Pc/pkg	Price	Volts	Amps	Poles	Wire Range ¹		Torque lb-in [N·m]	Wt. lb [kg]	Covers* (Sold Separately)		
							Solid and Stranded	Fine Stranded			w/o Indication	With Indication ³	Pc/pkg
Midget	BMM603-1PQ	15	\$152.00	600V AC/DC	30	1	18-10 AWG	18-10 AWG	20 [2.3]	0.05 [0.04]	CVR-CCM-QC \$31.50	CVRI-CCM-QC \$41.00	3
	BMM603-2PQ	5	\$86.00			2				0.15 [0.06]			
	BMM603-3PQ	5	\$110.00			3				0.20 [0.10]			
	BMM603-1PQ-1	1	\$11.00			1				0.05 [0.04]			
CC	BCM603-1PQ	15	\$209.00			1				0.05 [0.04]			
	BCM603-2PQ	5	\$107.00			2				0.15 [0.06]			
	BCM603-3PQ	5	\$134.00			3				0.20 [0.10]			
	BCM603-1PQ-1	1	\$15.00			1				0.05 [0.04]			
Combo	BCCMM603-3PQ ²	5	\$146.00			3				0.20 [0.10]			

¹ Ratings are for copper wire only.

² Combination modular fuse block for use with transformers. Accepts two (2) Class CC and one (1) Midget class fuse.

³ Open fuse indication requires 90V minimum and closed circuit to operate.

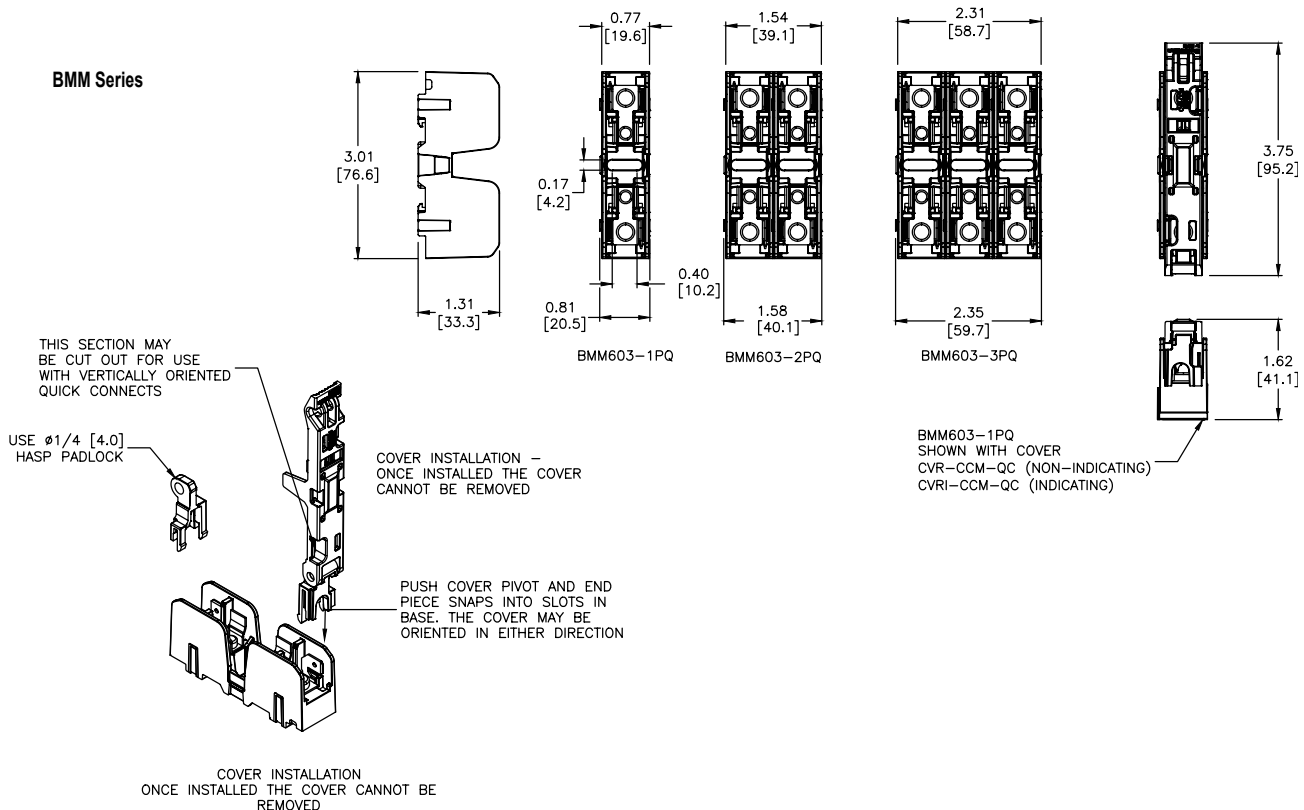
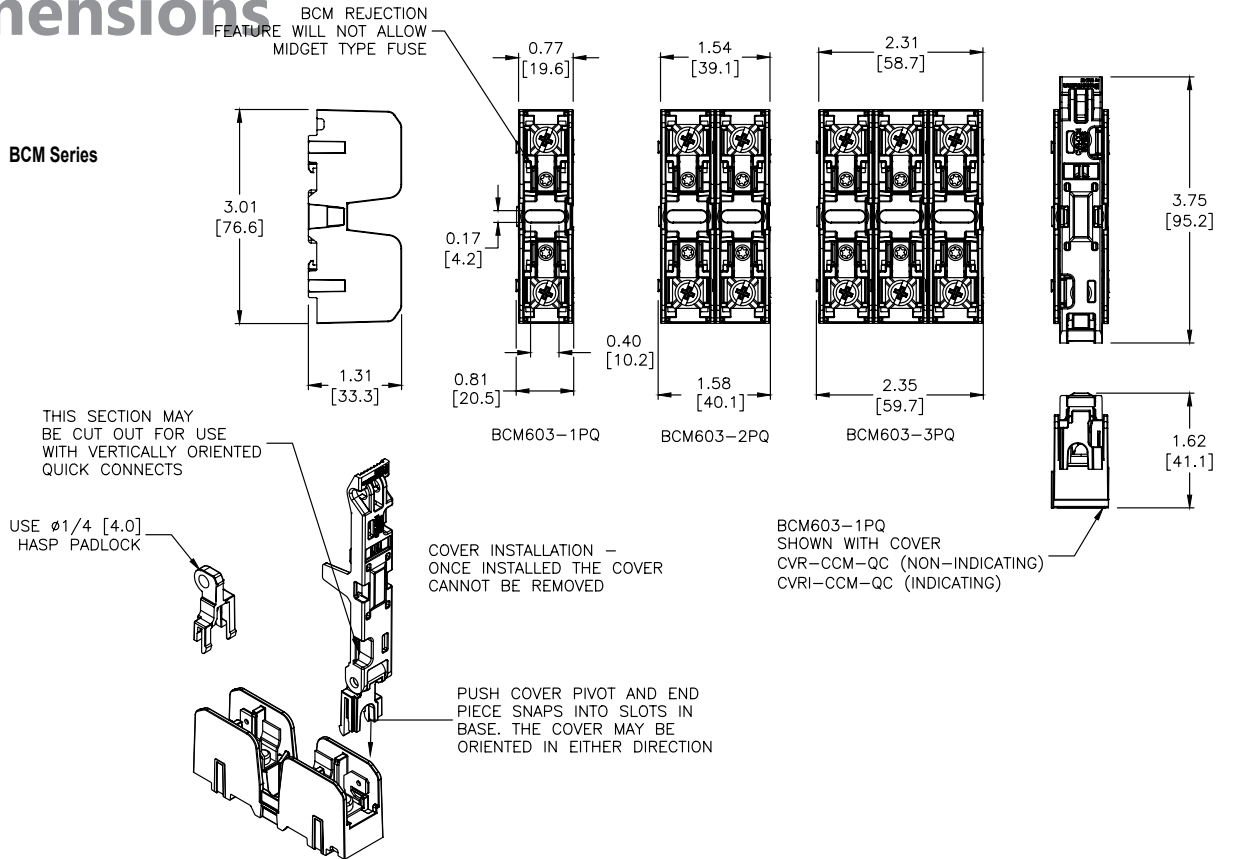
*Once installed, the cover cannot be removed.

**Quick connect terminal rated for 20A maximum.

Modular Ferrule Fuse Blocks for Midget Class and CC Fuses

Dimensions

in [mm]

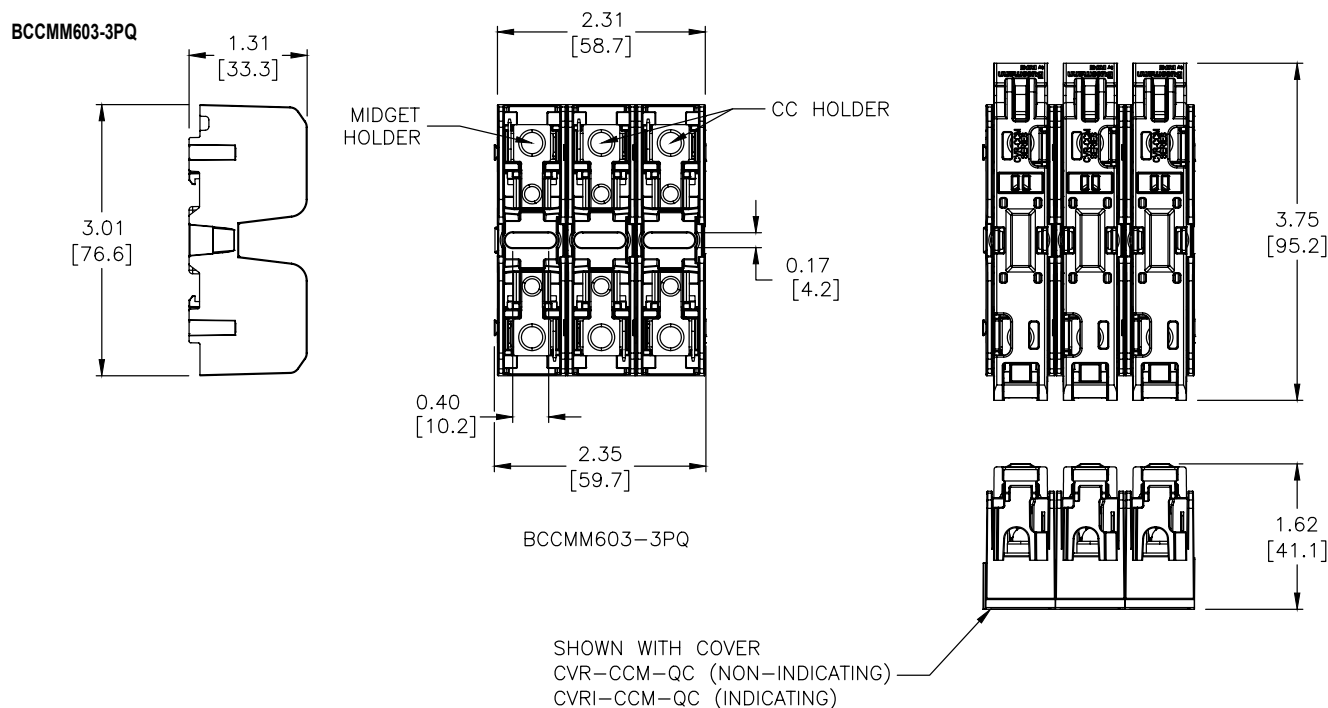


Please see our website www.AutomationDirect.com for complete engineering drawings. Dimensions are approximate. Not for construction purposes.

Modular Ferrule Fuse Blocks for Midget Class and CC Fuses

Dimensions

in [mm]



Please see our website www.AutomationDirect.com for complete engineering drawings. Dimensions are approximate. Not for construction purposes.

Accessories



FP-2

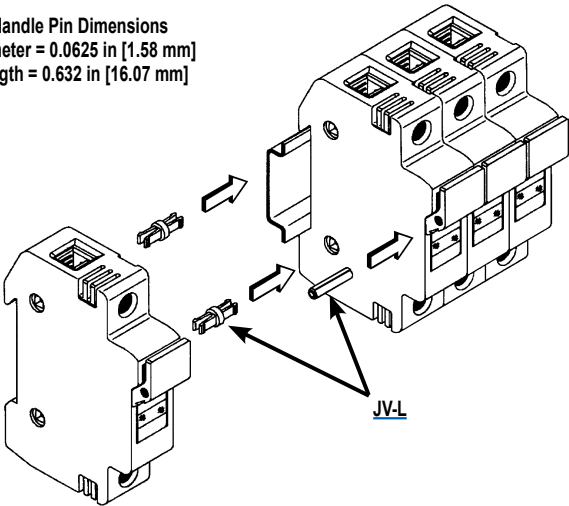


JV-L

Accessories			
Part Number	Description	Pcs/Pkg	Price
FP-2	Fuse puller for fuse dia. 13/32" - 13/16". Fuse type: 0-60A, 250V; 0-30A, 600V	1	\$40.00
JV-L* (Not Field Installable)	Multi-pole connection kit to connect new design multiple Class CC and Midget Class fuse holders together. Kit consists of 6 connectors and 3 handle pins to connect up to 4 fuse holders.		\$15.00

*Note: Will not work with retired design fuse holders shipped before November 1, 2009.
Roll pin punch or installation tool is required to install handle pins (Tool not sold by AutomationDirect.com).

Handle Pin Dimensions
Diameter = 0.0625 in [1.58 mm]
Length = 0.632 in [16.07 mm]



Cross Reference Guide



CROSS REFERENCE GUIDE By manufacturers type reference or series number. Ampere ratings must be added for ordering purposes.

FUSE TYPE		VOLT	EDISON	BRUSH/ DORMAN	BUSSMANN	MERSEN / GOULD	GEC/CEFCO	LITTELFUSE
UL CLASS CURRENT LIMITING FUSES (CSA CLASS)								
CC (HRCI-CC)	Time-Delay	600	EDCC	–	LP-CC	ATDR	–	CCMR
	Time-Delay	600	HCTR	–	FNQ-R	ATQR	–	KLDR
	Fast-Acting	600	HCLR	HCLR	KTK-R	ATMR	CTK-R	KLKR
RK1	Time-Delay Dual Element	250	LENRK	–	LPN-RK-SP	A2DR	–	LLNRK
		600	LESRK	–	LPS-RK-SP	A6DR	–	LLSRK
RK5	Time-Delay Dual Element	250	ECNR	–	FRN-R	TR	–	FLNR
		600	ECSR	–	FRS-R	TRS	–	FLSR
J	Time-Delay Dual Element	600	JDL	–	LPJ	AJT	–	JTD
	High-Speed AC Drive	600	JHL	–	DFJ	HSJ	–	–
T	Extremely Fast-Acting	300	TJN	–	JJN	A3T	–	JLLN
		600	TJS	–	JJS	A6T	–	JLLS
UL CLASS GENERAL PURPOSE FUSES								
Midget	Fast-Acting	600	MCL	MCL	KTK	ATM	CTK	KLK
		250	MOL	MOL	BAF/BAN	OTM	–	BLF
	Time-Delay	500	MEQ	MEQ	FNQ	ATQ	–	FLQ
		250	MEN	MEN	FNM	TRM	–	FLM
1/4"x 1-1/4" Ceramic	Fast-Acting	250/125	ABC	ABC	ABC	GAB	–	314
1/4"x 1-1/4" Glass		250/32	AGC	AGC	AGC	GGC	–	312
1/4"x 1-1/4" Ceramic	Time-Delay	250	MDA	MDA	MDA	–	–	326
1/4"x 1-1/4" Glass		250/32	MDL	MDL	MDL	GDL	–	313
5x20 mm Glass	Fast-Acting	250/125	GMA	GMA	GMA	GGM	–	235
	Medium Time-Delay	250/125	GMC	GMC	GMC	GSC	–	–
5x20 mm Glass	Fast-Acting	250	S500	BDB	GDB	GSB	–	217
	Time-Delay	250	S506	BDC	GDC	GDG	–	218
Fuse Puller								
Fuse Puller FP-2			old - 38072 new - FP-2	–	FP-2	–	–	–