

# Edison Comb-Bus Bars



## Features

- Easily distribute power in single-phase or three-phase configurations
- Flexible cut-to length solutions without compromising on the product's finger-safe features
- 10kA (default) SCCR
- 100kA SCCR (Short Circuit Current Rating) when protected by a 200A Class J fuse
- Single-phase bus bars rated to 1000VDC/600VAC and 100A configuration
- Three-phase bus bars rated to 600VAC/DC and 100A configuration
- Power feed terminals for single-phase and three-phase service



**Note:** Not to be used with older style CH series fuse holders.

## Agency Approvals/Standards

- UL508, File E1 95399
- CE
- RoHS
- Reach

**Comb-Bus Bar Selection Table**

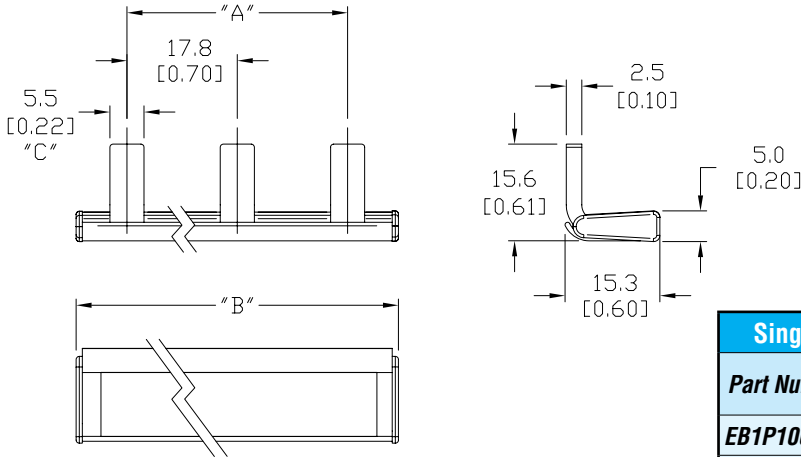
Part Number	Wiring Configuration	Maximum Voltage	Maximum Current	Endcap	# of Pins/Connections	Product Weight (lbs.)	Box Qty.	Price
<b>EB1P100M3</b>	Single-phase	600VAC 1000VDC	100A	Ships w/2 Endcaps	3	1.84	1	\$6.75
<b>EB1P100M6</b>					6	3.90		\$9.75
<b>EB1P100M9</b>					9	5.38		\$12.75
<b>EB1P100M12</b>					12	7.94		\$15.75
<b>EB1P100M15</b>					15	10.00		\$18.75
<b>EB1P100M57</b>				Sold separately (EECAP1P)	57	15.52	1	\$58.75
<b>EB3P100M6</b>	Three-phase	600VAC/DC	100A	Ships w/2 Endcaps	6	1.84	1	\$22.25
<b>EB3P100M9</b>					9	3.07		\$29.50
<b>EB3P100M12</b>					12	4.28		\$35.50
<b>EB3P100M15</b>					15	5.54		\$48.00
<b>EB3P100M57</b>								

# Comb-Bus Bars



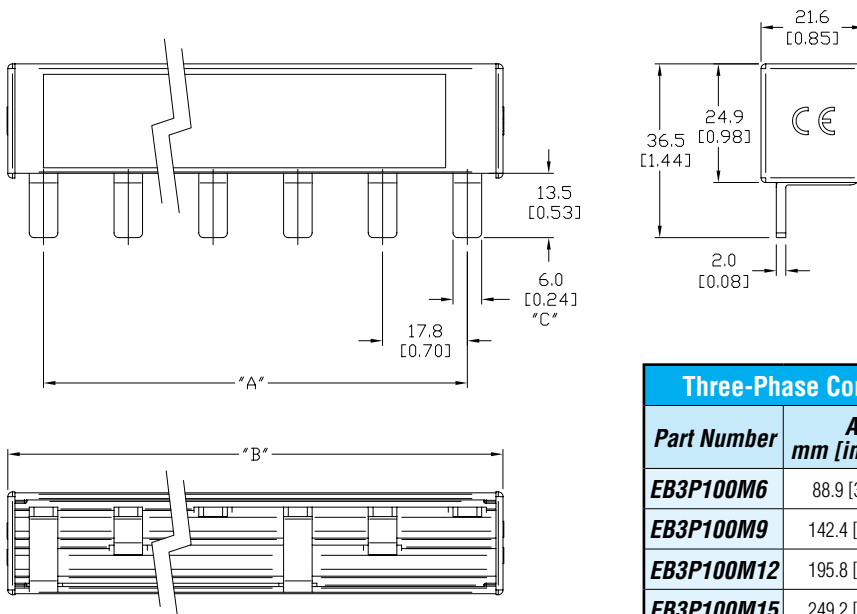
## Typical Single-Phase Dimensional Data

mm [inches]



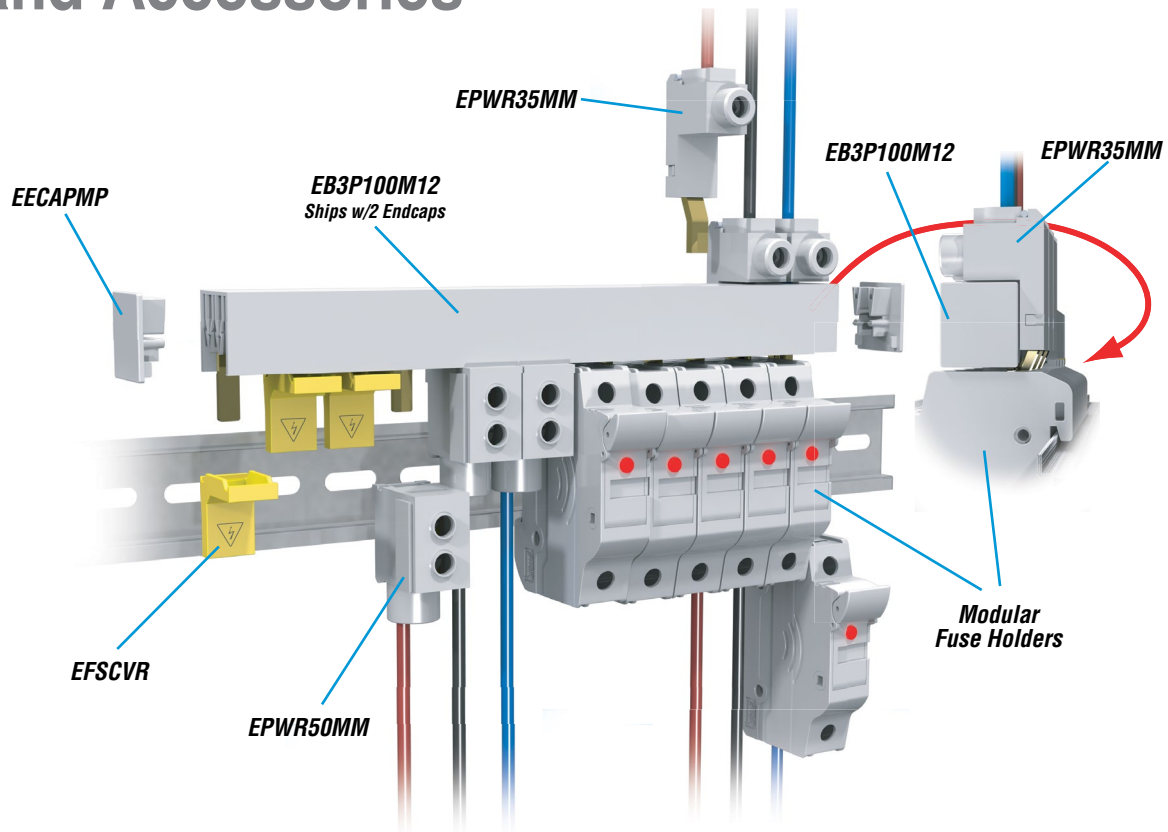
Single-Phase Comb-Bus Bar Dimensions			
Part Number	A mm [inches]	B mm [inches]	C # of pins
<b>EB1P100M3</b>	35.6 [1.40]	60.4 [2.38]	3
<b>EB1P100M6</b>	88.9 [3.50]	113.0 [4.45]	6
<b>EB1P100M9</b>	142.4 [5.61]	157.1 [6.19]	9
<b>EB1P100M12</b>	195.8 [7.71]	211.8 [8.33]	12
<b>EB1P100M15</b>	249.2 [9.81]	271.7 [10.70]	15
<b>EB1P100M57</b>	996.8 [39.24]	1011.2 [39.81]	57

## Typical Three-Phase Dimensional Data



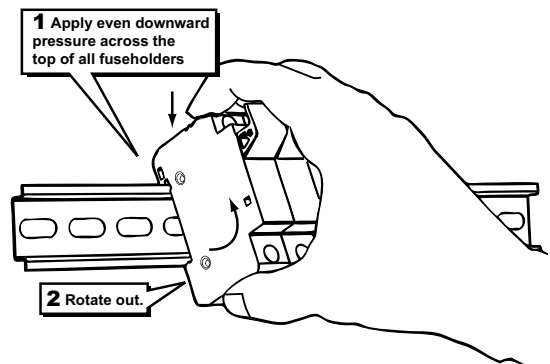
Three-Phase Comb-Bus Bar Dimensions			
Part Number	A mm [inches]	B inches [mm]	C # of Pins
<b>EB3P100M6</b>	88.9 [3.50]	103.7 [4.08]	6
<b>EB3P100M9</b>	142.4 [5.61]	158.4 [6.24]	9
<b>EB3P100M12</b>	195.8 [7.71]	213.3 [8.39]	12
<b>EB3P100M15</b>	249.2 [9.81]	265.0 [10.43]	15
<b>EB3P100M57</b>	996.8 [39.24]	1011.2 [39.81]	57

# Comb-Bus Bar Installation and Accessories



Comb-Bus Bar Accessories				
Part Number	Description	Product Weight (lbs)	Qty. Per Pack	Price
EECAP1P	Single-phase busbar endcap	0.02	50	\$41.00
EECAP1P-10			10	\$10.25
EECAPMP	Three-phase busbar endcap	0.22	50	\$48.25
EECAPMP-10			10	\$12.00
EPWR35MM	35mm <sup>2</sup> feeder terminal for three-phase busbar, wire range: 10-1/0 AWG CU, torque 50 lb-in, (115A, 1000VAC/DC)	0.68	10	\$89.50
EPWR35MM-1			1	\$11.25
EPWR50MM	50mm <sup>2</sup> direct feed terminal, wire range: 14-1 AWG CU, torque 35 lb-in, (115A, 1000VAC/DC)	0.61	10	\$108.75
EPWR50MM-1			1	\$13.75
EFSCVR	Spare contact safety protection covers	0.17	10	\$40.00
EFSCVR-2			2	\$10.00
EPWR1PLP	Single-phase low-profile feeder terminal, wire range: 10-1/0 AWG CU, torque 50 lb-in, (115A, 1000VAC/DC)	0.51	10	\$99.00
EPWR1PLP-1			1	\$12.50

## DIN Rail Removal



Fuse Holder Accessories			
Part Number	Description	Qty. Per Pack	Price
JV-L (Not Field Installable)	Multi-pole connection kit to connect multiple Class CC and Midget Class fuse holders together.	6 connectors 3 handle pins	\$7.00



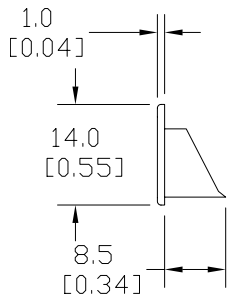
JV-L

# Comb-Bus Accessories

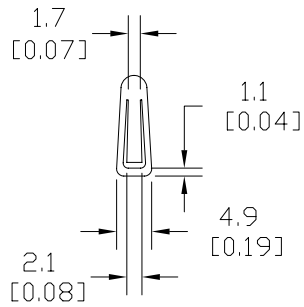


## Dimensions

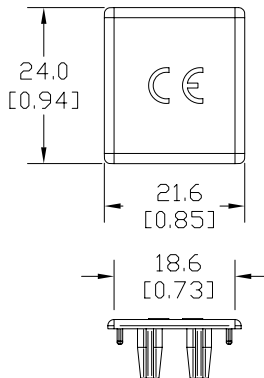
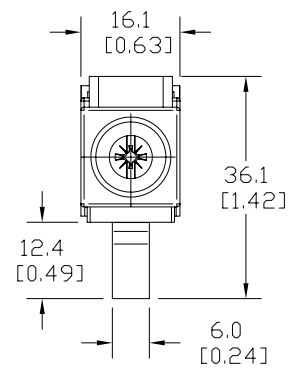
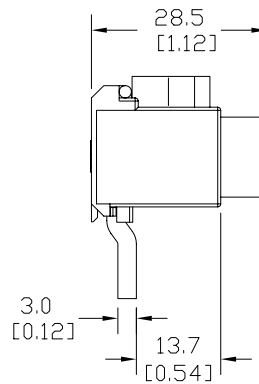
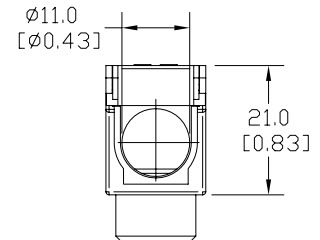
mm [inches]



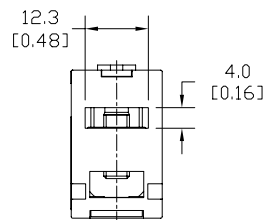
**EECAP1P  
EECAP1P-10**



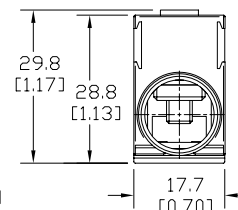
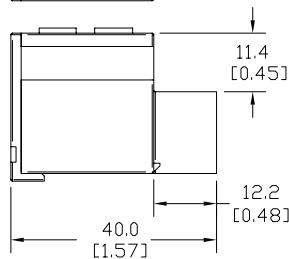
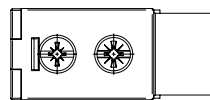
**EPWR1PLP  
EPWR1PLP-1**



**EECAPMP  
EECAPMP-10**



**EPWR50MM  
EPWR50MM-1**



# Comb-Bus Accessories



## Dimensions

mm [inches]

