

# Fuse Blocks for Class RK Fuses



## Description

For use with Edison LENRK and ECNR, R250; Edison LESRK and ECSR, R600, Class R fuses

Terminal type :

- SR = Screw type, clip with re-inforced spring.
- CR = Box lug type, clip with reinforced spring

## Agency Approvals

- UL Listed, UL 512, Guide IZLT, File E14853
- CSA, Certified, C22.2 No.39 Class 6225-01, File 47235



**R25030-1SR**



**R60030-1SR**

## Specifications

Construction: Thermoplastic

UL Flammability: 94V-0

Voltage Ratings:

R250: 250 Volts AC; R600: 600 Volts AC

Ampere Ratings: 0.10 - 600 Amps

Short-circuit current Rating: 200,000 RMS

Symmetrical Amps

R250 Series Fuse Blocks (250V)						
Part Number	Amps	Poles	Maximum Wire Size	Fig #	Pcs/Pkg	Wt. (lbs.) Price
R25030-1SR	0.1 to 30	1	#10-18 Cu	1	1	0.10 Retired
R25030-2SR		2		2		0.25 Retired
R25030-3SR		3		3		0.30 Retired
R25060-1CR	31 to 60	1	#2-14 Cu #2-8 Al	4	1	0.23 Retired
R25060-2CR		2		5		0.44 Retired
R25060-3CR		3		6		0.45 Retired
R25100-1CR	61 to 100	1	1/0-8 Cu-Al	7	1	0.60 Retired
R25100-2CR		2		8		1.00 Retired
R25100-3CR		3		9		1.50 Retired
R25200-1CR	101 to 200	1	250MCM-6 Cu-Al	See Table 1 below then refer to Figure #	1	2.20 \$90.00
R25200-3CR		3				5.30 \$270.00
R25400-1CR	201 to 400	1	500MCM-4 Cu-Al	See Table 1 below then refer to Figure #	1	2.90 \$247.00
R25400-3CR*		3				1070 \$737.00
R25600-1CR	401 to 600	1	(2) 500MCM-4/0 Cu-Al	See Table 1 below then refer to Figure #	1	5.80 \$300.00
R25600-3CR*		3				20.70 \$969.00

\* Not UL

R600 Series Fuse Blocks (600V)						
Part Number	Amps	Poles	Maximum Wire Size	Fig #	Pcs/Pkg	Wt. (lbs.) Price
R60030-1SR	0.1 to 30	1	#10-18 Cu only	13	1	0.24 Retired
R60030-2SR		2		14		0.44 \$26.50
R60030-3SR		3		15		0.40 Retired
R60060-1CR	31 to 60	1	#2-14 Cu #2-8 Al	16	1	0.30 \$20.50
R60060-2CR		2		17		0.60 \$34.50
R60060-3CR		3		18		0.85 Retired
R60100-1CR	61 to 100	1	1/0-8 Cu-Al	19	1	1.00 \$44.00
R60100-2CR		2		20		1.50 \$64.00
R60100-3CR		3		21		2.30 Retired
R60200-1CR	101 to 200	1	250MCM-6 Cu-Al	See Table 2 below then refer to Figure #	1	0.50 \$91.00
R60200-3CR		3				4.95 \$258.00
R60400-1CR	201 to 400	1	500MCM-4 Cu-Al	See Table 2 below then refer to Figure #	1	4.10 \$219.00
R60400-3CR*		3				9.85 \$617.00
R60600-1CR	401 to 600	1	(2) 500MCM-4/0 Cu-Al	See Table 2 below then refer to Figure #	1	7.50 \$348.00
R60600-3CR*		3				17.30 \$929.00

\* Not UL



# R250 Fuse Blocks for Class RK Fuses

## Dimensions

inches (mm)

### 250V, 31 Amp to 60 Amp

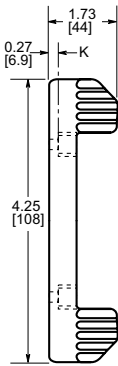


Figure 4

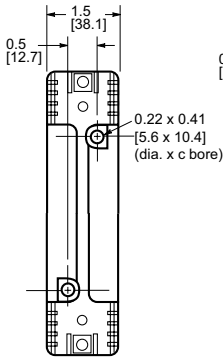


Figure 5

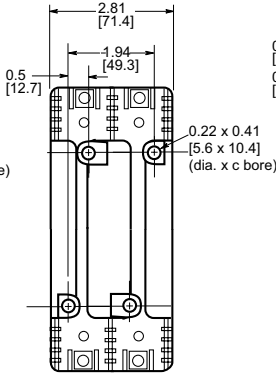
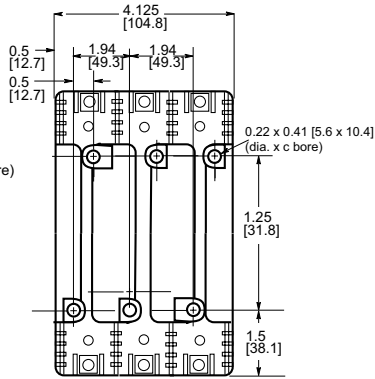


Figure 6



### 250V, 61 Amp to 100 Amp

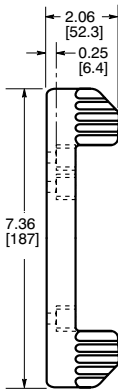


Figure 7

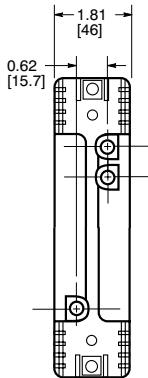


Figure 8

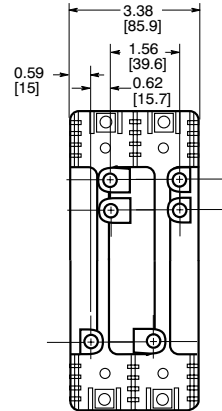
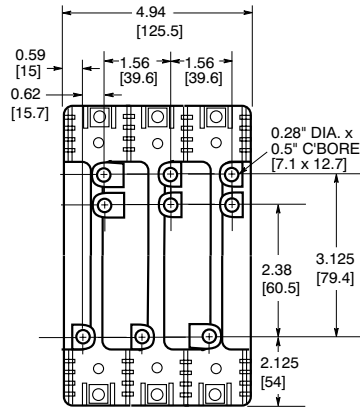


Figure 9



Note: All dimensions shown in inches [mm]

# R250 Fuse Blocks for Class RK Fuses



Table 1 (250V)										
	Fig #	A	B	C	D	E	F	G	H	K
<b>R25200-1CR</b>	10	7.15in (181.6mm)	3.15in (80mm)	3.0in (76.2mm)	2.06in (52.3mm)	0.5in (12.7mm)	2.0in (50.8mm)	3.0in (76.2mm)	0.75in (19.05mm)	0.31in (7.9mm)
<b>R25200-3CR</b>	11	Dimensions on Figure								
<b>R25400-1CR</b>	10	9.06in (230.1mm)	4.0in (101.6mm)	3.0in (76.2mm)	3.02in (76.7mm)	0.91in (23.1mm)	1.75in (44.5mm)	3.0in (76.2mm)	1.0in (25.4mm)	0.31in (7.9mm)
<b>R25400-3CR</b>	12	9.06in (230.1mm)	4.0in (101.6mm)	4.0in (101.6mm)	2.5in (63.5mm)	0.82in (20.8mm)	9.25in (235mm)	10.88in (276.4mm)	1.0in (25.4mm)	0.56in (14.2mm)
<b>R25600-1CR</b>	10	11.0in (279.4mm)	4.97in (126.2mm)	3.0in (76.2mm)	4.0in (101.6mm)	1.125in (28.6mm)	1.75in (44.5mm)	4.0in (101.6mm)	1.0in (25.4mm)	0.56in (14.2mm)
<b>R25600-3CR</b>	12	11.0in (279.4mm)	4.97in (126.2mm)	5.0in (127mm)	3.0in (76.2mm)	1.87in (47.5mm)	11.0in (279.4mm)	14.74in (374.4mm)	1.0in (25.4mm)	0.56in (14.2mm)

## 250V, 101 Amp to 200 Amp

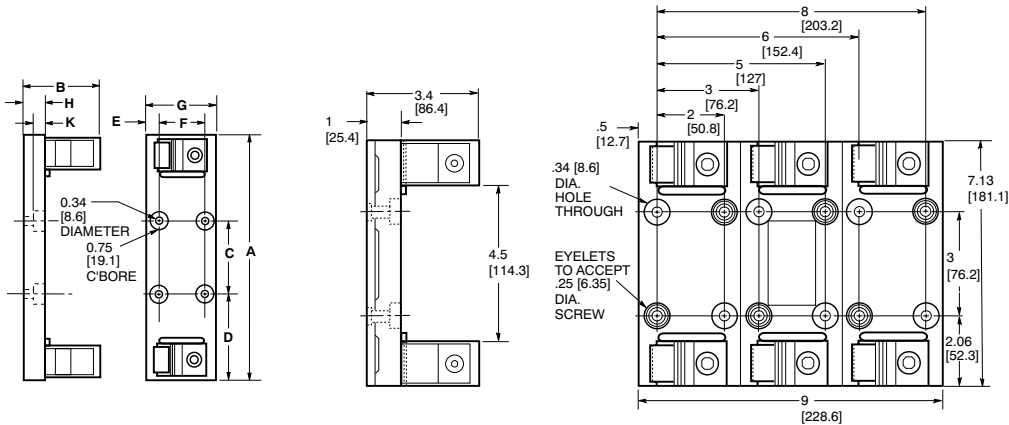


Figure 10

Figure 11

## 250V, 201 Amp to 600 Amp

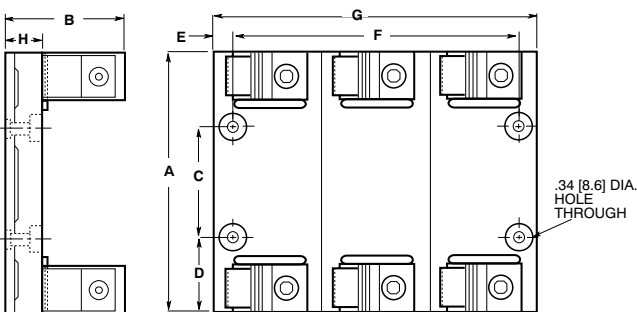


Figure 12

Note: All dimensions shown in inches [mm]



# R600 Fuse Blocks for Class RK Fuses

## Dimensions

inches (mm)

### 600V, 0.1 Amp to 30 Amp

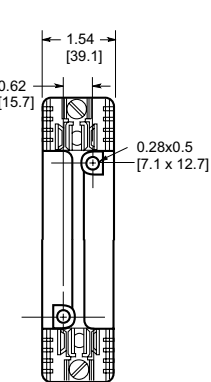
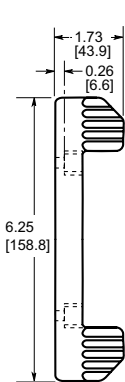


Figure 13

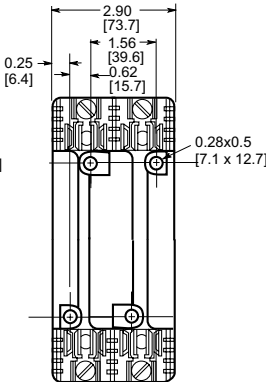


Figure 14

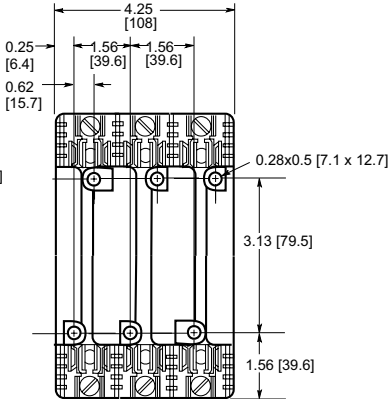


Figure 15

### 600V, 31 Amp to 60 Amp

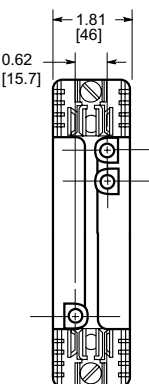
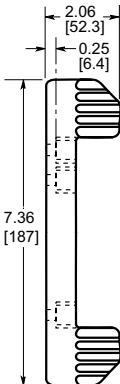


Figure 16

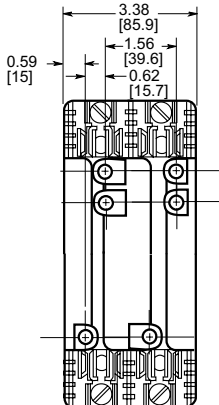


Figure 17

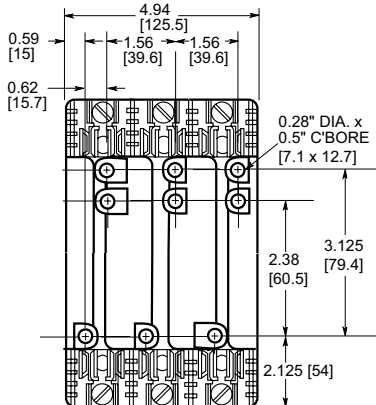


Figure 18

### 600V, 61 Amp to 100 Amp

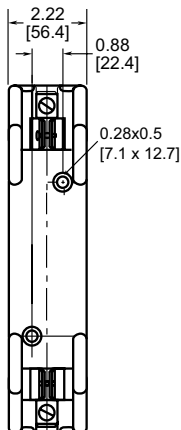
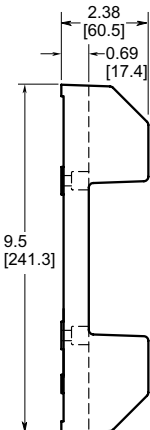


Figure 19

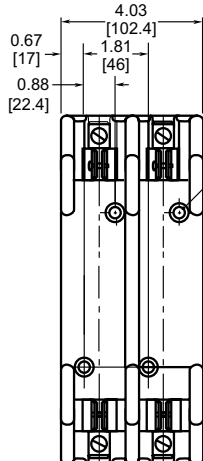


Figure 20

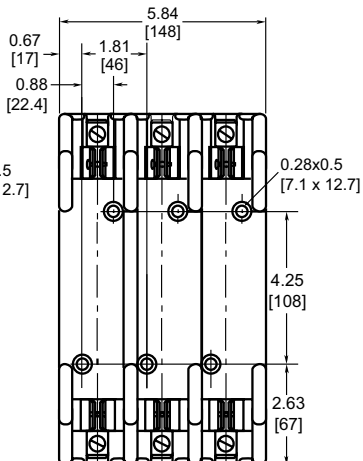


Figure 21

Note: All dimensions shown in inches [mm]

# R600 Fuse Blocks for Class RK Fuses



Table 2 (600V)										
	Fig #	A	B	C	D	E	F	G	H	K
<b>R60200-1CR</b>	22	9.63in (244.6mm)	3.09in (78.5mm)	3.0in (76.2mm)	3.31in (84.1mm)	0.5in (12.7mm)	2.0in (50.8mm)	3.0in (76.2mm)	0.75in (19.1mm)	0.31in (7.9mm)
<b>R60200-3CR</b>	23	Dimensions on Figure								
<b>R60400-1CR</b>	22	12.0in (305mm)	4.0in (102mm)	3.0in (76.2mm)	4.5in (114.3mm)	0.63in (16mm)	1.75in (44.5mm)	3.0in (76.2mm)	1.0in (25.4mm)	0.56in (14.2mm)
<b>R60400-3CR</b>	24	Dimensions on Figure								
<b>R60600-1CR</b>	22	14.0in (356mm)	4.97in (126.2mm)	3.0in (76.2mm)	5.5in (140mm)	1.125in (28.6mm)	1.75in (44.5mm)	4.0in (102mm)	1.0in (25.4mm)	0.56in (14.2mm)
<b>R60600-3CR</b>	25	Dimensions on Figure								

## 600V, 101 Amp to 600 Amp

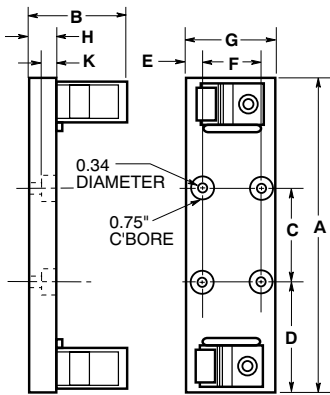


Figure 22

## 600V, 101 Amp to 200 Amp

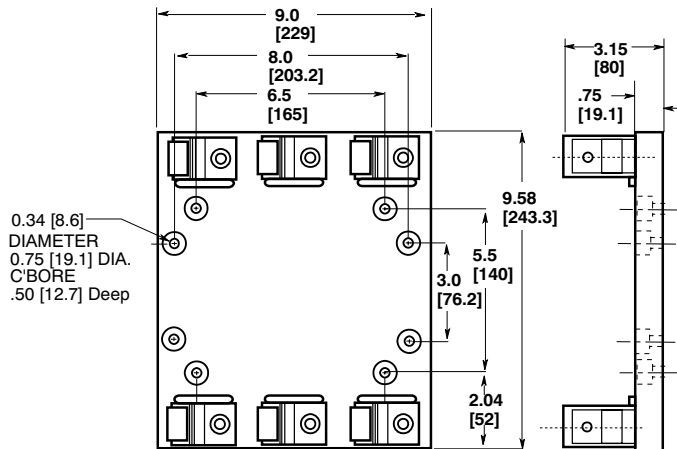


Figure 23

## 600V, 201 Amp to 400 Amp

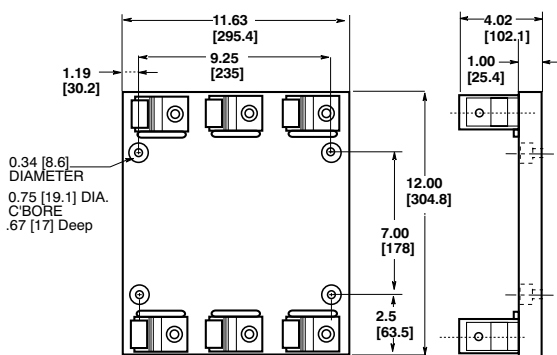


Figure 24

## 600V, 401 Amp to 600 Amp

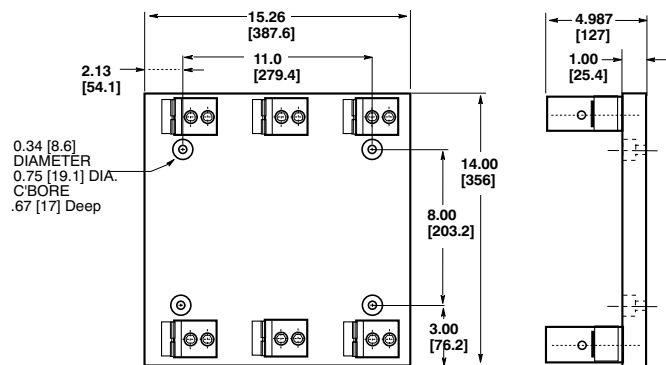


Figure 25

Note: All dimensions shown in inches [mm]